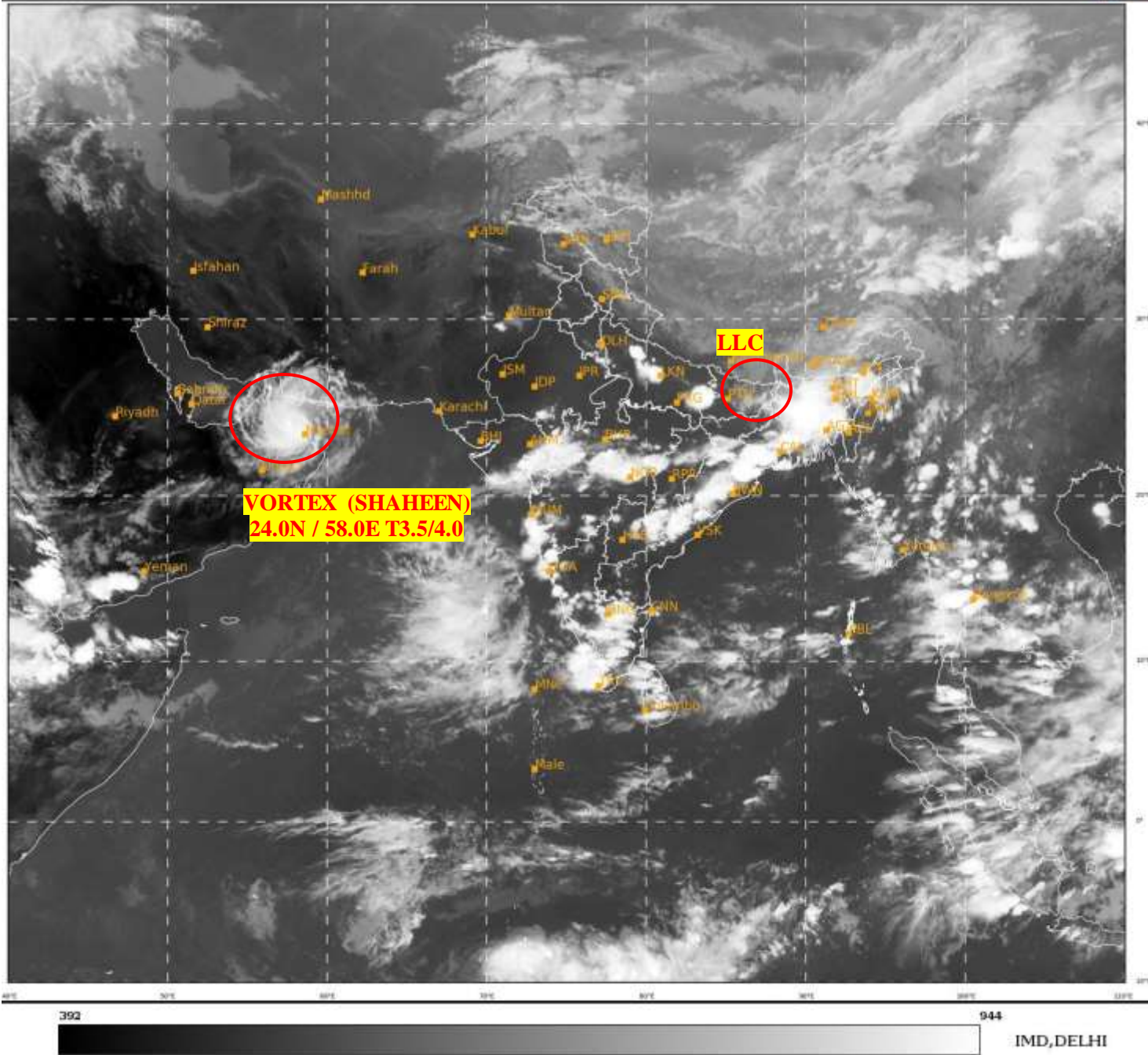




SATELLITE BULLETIN BASED ON SATELLITE
IMAGERIES AND PRODUCTS
03.10.2021 TIME 1200 UTC

SAT : INSAT-3D IMG
IMG_TIR1 10.8 um
LIC Mercator

03-10-2021/(1200 to 1226) GMT
03-10-2021/(1730 to 1756) IST



TCIN50 DEMS 031200

SATELLITE BULLETIN BASED ON INSAT-3D PIC OF 031200 UTC (.)
REGION COVERED BETWEEN LAT 50.0°N TO 30.0°S AND LONG 40.0°E TO 125.0°E (.)

SALIENT FEATURES:-

VORTEX (SHAHEEN) OVER GULF OF OMAN & N/HOOD:-

VORTEX (SHAHEEN) OVER GULF OF OMAN & N/HOOD CENTERED NEAR 24.0N / 58.0E (.)
INTENSITY T3.5/4.0 (.) ASSTD BKN LOW/MED CLOUDS WITH EMBDD INT TO V INT CONVTN OVER
GULF OF OMAN ADJ NW ARSEA BET LAT 22.5N TO 26.0N LONG 56.0E TO 60.0E W MAKARAN
COAST N OMAN (.) MINIMUM CTT MINUS 75 DEG C (.)

LLC OVER BHR & N/HOOD:-

SCT LOW/MED CLOUDS WITH EMBDD INT TO V INT CONVTN OVER E BHR ADJ SHWB IN ASSW
LOW LEVEL CIRCULATION (LLC) OVER THE AREA (.)



INSAT-3D 03-OCT-2021 12:00 WV IMG

WATER VAPOUR WIND

(1Kt = 0.5 m/s)

10 Kt

15 Kt

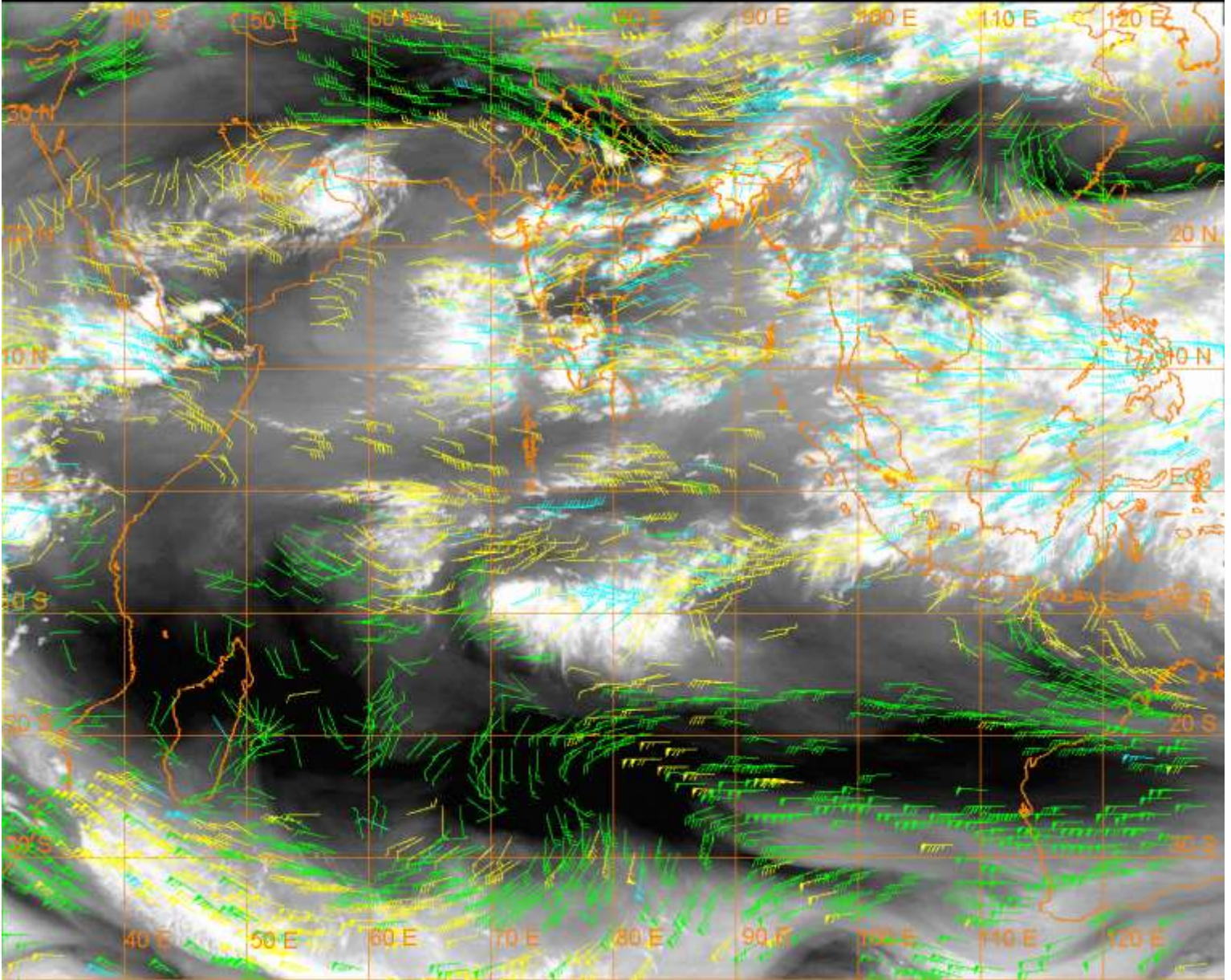
20 Kt

50 Kt

100-250 hPa

251-350 hPa

351-500 hPa



WESTERN DISTURBANCE:-

SCT MULTILAYERED CLOUDS OVER N PAK J&K LADAKH TIBET ADJ CHINA IN ASSW **WD** OVER THE AREA (.)

CLOUDS DESCRIPTION WITHIN INDIA:-

NORTH:-

SCT LOW/MED CLOUDS WITH EMBDD INT TO V INT CONVTN OVER C & EXT E UP ADJ W BHR (.) SCT LOW/MED CLOUDS WITH EMBDD MOD TO INT CONVTN OVER LADAKD (.) SCT LOW/MED CLOUDS WITH EMBDD WK TO MOD CONVTN OVER J&K N HP N UTRKND S HARY ADJ W UP (.) SCT LOW/MED CLOUDS OVER PJB S HP S UTRKND REST UP (.)

EAST:-

SCT LOW/MED CLOUDS WITH EMBDD INT TO V INT CONVTN OVER S CHTGH ORS S JHRKND EXT W BHR GWB ASSAM MEGHA TRP N MIZO & BD (.) SCT LOW/MED CLOUDS WITH EMBDD MOD TO INT CONVTN OVER N CHTGH E BHR NE JHRKND SHWB REST NE STATES (.) SCT LOW/MED CLOUDS WITH EMBDD WK TO MOD CONVTN OVER REST JHRKND REST BHR SKM (.)

WEST:-

SCT LOW/MED CLOUDS WITH EMBDD INT TO V INT CONVTN OVER S MP SE GUJ N VID KKN (.) SCT LOW/MED CLOUDS WITH EMBDD MOD TO INT CONVTN OVER SE RAJ SW GUJ REST MAHA GOA (.) SCT LOW/MED CLOUDS OVER N RAJ N GUJ N MP (.)

SOUTH:-

SCT TO BKN LOW/MED CLOUDS WITH EMBDD INT TO V INT CONVTN OVER N COTL AP ADJ E TLNGN COTL KRNTK KER TN (.) SCT LOW/MED CLOUDS WITH EMBDD MOD TO INT CONVTN OVER REST KRNTK LKSDP ANDAMAN ILS (.) SCT LOW/MED CLOUDS WITH EMBDD ISOL WK TO MOD CONVTN OVER REST TLNGN RYLSM REST COTL AP & NICOBAR ILS (.)

ARABIAN SEA:-

BKN LOW/MED CLOUDS WITH EMBDD INT TO V INT CONVTN OVER GULF OF OMAN ADJ NW ARSEA AND EC ADJ SE ARSEA (.)

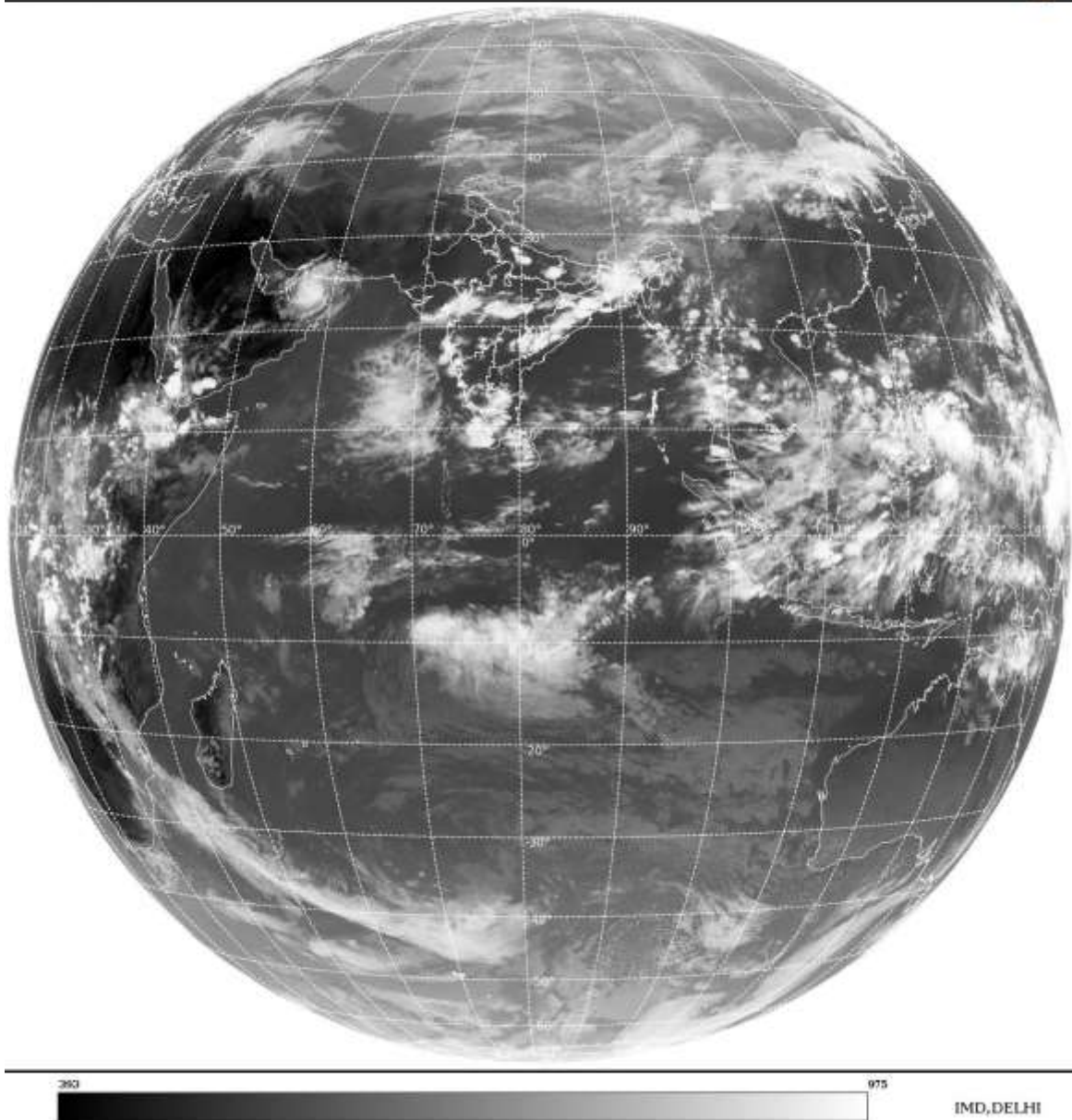
BAY OF BENGAL & ANDAMAN SEA:-

SCT LOW/MED CLOUDS WITH EMBDD MOD TO INT CONVTN OVER S BAY N ANDAMAN SEA (.)

CLOUDS DESCRIPTION OUTSIDE INDIA:-

SAT : INSAT-3D IMG
Thermal Infrared1 Count 10.8 um
L1B FULL DISK

03-10-2021/(1200 to 1226) GMT
03-10-2021/(1730 to 1756) IST



SCT LOW/MED CLOUDS WITH EMBDD MOD TO INT CONVTN OVER SRI LANKA GULF OF MANNAR PALK STR N PAK NEPAL BHUTAN TIBET CHINA MYANMAR THAILAND GULF OF THAILAND CAMBODIA LAOS SUMATRA STR OF MALACCA MALAY PENINSULA BORNEO SOUTH CHINA SEA JAVA ILS & SEA CELEBES ILS & SEA PHILIPPINES YELLOW SEA SULU SEA AND OVER INDIAN OCEAN BET LAT 5.0N TO 15.0S LONG 61.0E TO 102.0E (.)

TOO 03/1920EF=

NNNN

LEGEND:-

REGION	NORTH	J&K HP PJB HARY DLH UP UTRKND
	EAST	BHR JHRKND CHTGH ORS WB SKMNORTH- EAST STATES
	WEST	RAJ MP GUJ MAHA GOA
	SOUTH	TLNGN AP KRNTK KER TN LKSDP ANDAMAN & NICOBAR ILS

CLOUD DISTRIBUTION	ISOL	ISOLATED (LESS THAN 25%)
	SCT	SCATTERED (25 TO 50%)
	BKN	BROKEN (51 TO 75%)
	SLD	SOLID (GREATER THAN 75%)
CLOUDS TOP TEMPERATURE	CTT	CLOUD TOP TEMPERATURE
CONVECTION	WK CONVTN	WEAK CONVECTION (CTT GREATER THAN -25°C)
	MOD CONVTN	MODERATE CONVECTION (CTT BETWEEN -25°C TO -40°C)
	INT CONVTN	INTENSE CONVECTION (CTT BETWEEN -41°C TO -70°C)
	V INT CONVTN	VERY INTENSE CONVECTION (CTT LESS THAN -70°C)
METEOROLOGICAL SUB-DIVISIONS, STATES & UNION TERRITORIES	ARUPR	ARUNACHAL PRADESH
	BHR	BIHAR
	CHTGH	CHHATTISGARH
	COTL AP	COASTAL ANDHRA PRADESH
	COTL KRNTK	COASTAL KARNATAKA
	COTL ORS	COASTAL ORISSA
	GUJ	GUJARAT
	GWB	GANGETIC WEST BENGAL
	HARY	HARYANA
	DLH	DELHI
	HP	HIMACHAL PRADESH
	J&K	JAMMU AND KASHMIR
	JHRKND	JHARKHAND
	KER	KERALA
	KKN	KONKAN
	LKSDP	LAKSHADWEEP
M MAHA	MADHYA MAHARASHTRA	

	MAHA	MAHARASHTRA
	MANI	MANIPUR
	MEGHA	MEGHALAYA
	MIZO	MIZORAM
	MP	MADHYA PRADESH
	MRTHWD	MARATHWADA
	NAGA	NAGALAND
	N COTL AP	NORTH COASTAL ANDHRA PRADESH
	NIK	NORTH INTERIOR KARNATAKA
	ORS	ORISSA
	PJB	PUNJAB
	RAJ	RAJASTHAN
	RYLSM	RAYALASEEMA
	SAU & KUTCH	SAURASHTRA & KUTCH
	SHWB	SUB-HIMALAYAN WEST BENGAL
	SIK	SOUTH INTERIOR KARNATAKA
	SKM	SIKKIM
	TLNGN	TELANGANA
	TN	TAMIL NADU
	TRP	TRIPURA
	UP	UTTAR PRADESH
	UTRKND	UTTARAKHAND
	VID	VIDHARBHA
	SHWB	SUB HIMALAYAN WEST BENGAL
	GWB	GANGETIC WEST BENGAL
	ARSEA	ARABIAN SEA
	ILS	ISLANDS
MISCELLANEOUS	ASSW	IN ASSOCIATION WITH
	ASSTD	ASSOCIATED
	LLC	LOW LEVEL CIRCULATION
	EMBDD	EMBEDDED
	N/HOOD	NEIGHBOURHOOD
	EXT	EXTREME