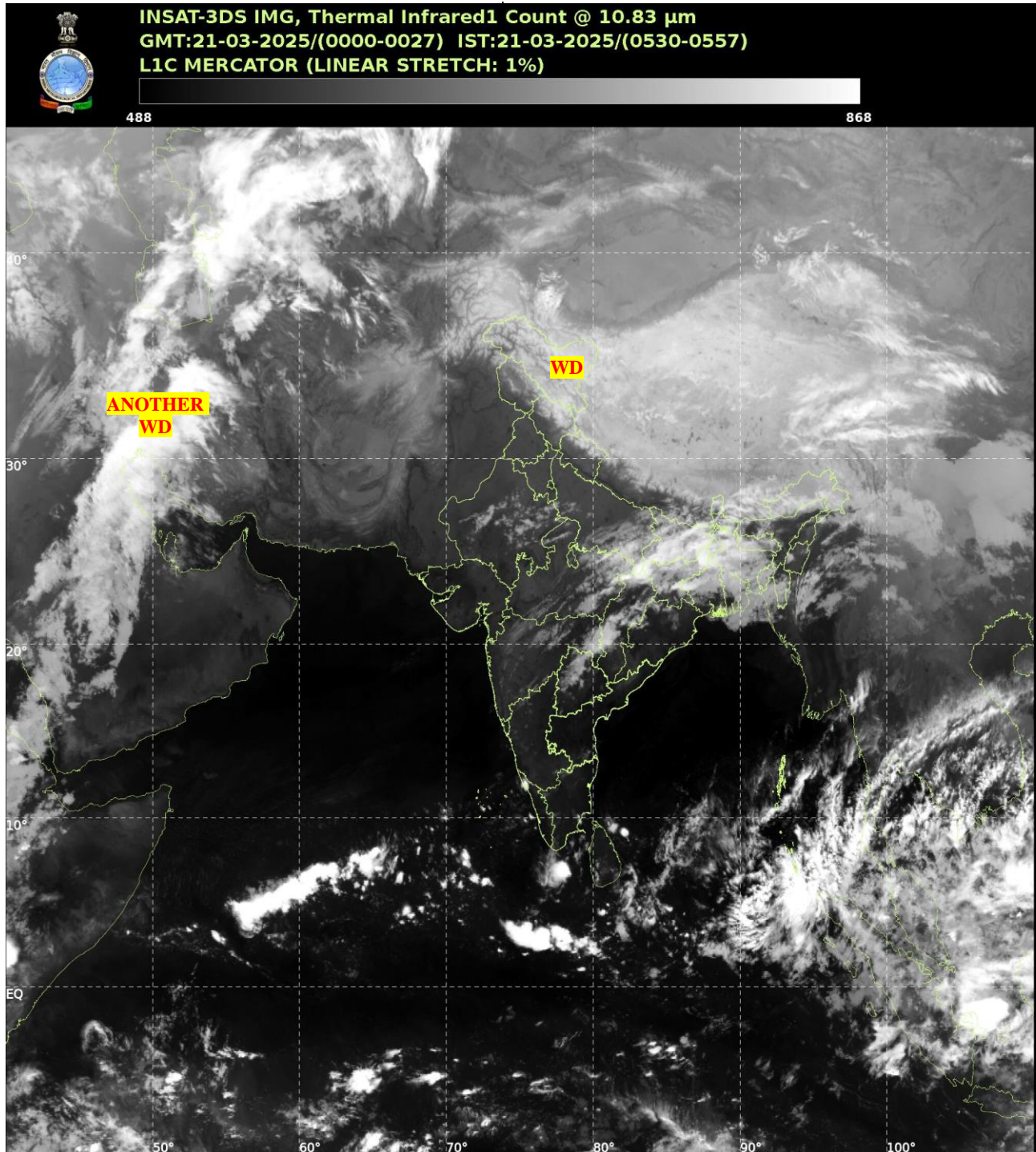




भारत मौसम विज्ञान विभाग  
पृथ्वी विज्ञान मंत्रालय  
India Meteorological Department  
Ministry of Earth Sciences



**SATELLITE BULLETIN BASED ON SATELLITE  
IMAGERIES AND PRODUCTS**  
**21.03.2025 TIME 0000 UTC**



TCIN50 DEMS 210000

SATELLITE BULLETIN BASED ON INSAT-3DS PIC OF 210000 UTC (.)

REGION COVERED BETWEEN LAT 50.0°N TO 35.0°S AND LONG 40.0°E TO 125.0°E (.)

**SALIENT FEATURES:-**

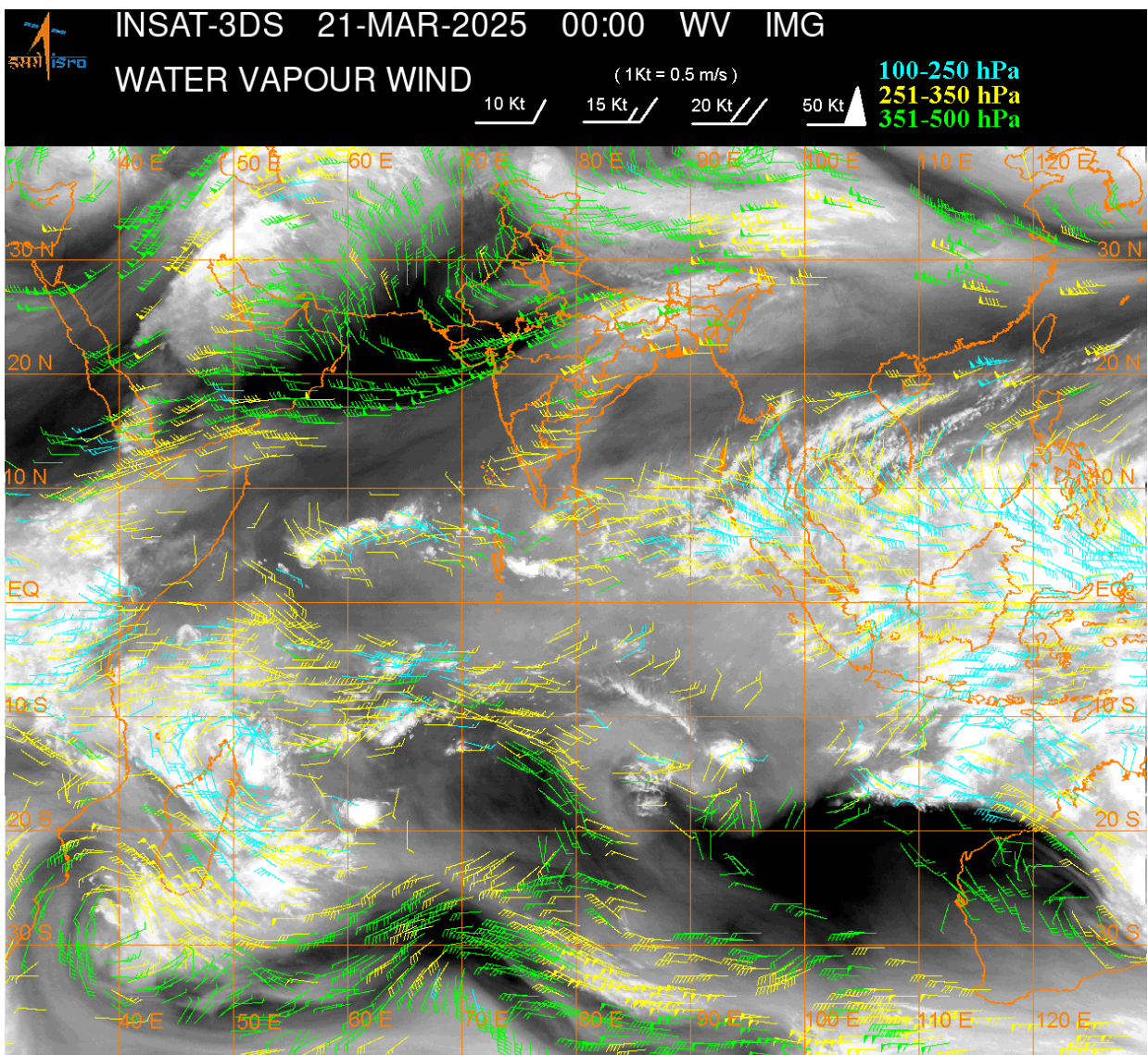
**WESTERN DISTURBANCE:-**

SCT MULTILAYERED CLOUDS OVER LADAKH TIBET ADJ CHINA IN ASSW **WD** OVER THE AREA (.)

SCT MULTILAYERED CLOUDS OVER CASPIAN SEA IRAN PERSIAN GULF AND N/HOOD IN ASSW **ANOTHER WD** OVER THE AREA (.)

**CONVECTIVE / THUNDERSTORM ACTIVITY:-**

MODERATE CONVECTIVE / THUNDERSTORM ACTIVITY OVER SE UP BHR JHRKND N CHTGH N GWB SHWB ANDAMAN & NICOBAR ILS (MINIMUM **CTT MINUS 40-50 DEG CEL**) (.)



**CLOUDS DESCRIPTION WITHIN INDIA:-**

**NORTH:-**

SCT LOW/MED CLOUDS WITH EMBDD MOD TO INT CONVTN OVER SE UP (.) SCT LOW/MED CLOUDS WITH EMBDD ISOL WK TO MOD CONVTN OVER LADAKH J&K N HP N UTRNKD SW & NE UP (.)

**EAST:-**

SCT LOW/MED CLOUDS WITH EMBDD MOD TO INT CONVTN OVER BHR JHRKND N CHTGH N GWB SHWB (.) SCT LOW/MED CLOUDS WITH EMBDD WK TO MOD CONVTN OVER S CHTGH N ORS S GWB SKM NE STATES & BD (.)

**WEST:-**

SCT LOW/MED CLOUDS WITH EMBDD ISOL WK TO MOD CONVTN OVER RAJ MP VID MRTHWD MADHYA MAHA (.)

**SOUTH:-**

SCT LOW/MED CLOUDS WITH EMBDD MOD TO INT CONVTN OVER ANDAMAN & NICOBAR ILS (.) SCT LOW/MED CLOUDS WITH EMBDD ISOL WK TO MOD CONVTN OVER TLNGN EXT N KER SE TN LKSDP ILS AREA (.) ISOL TO SCT LOW/MED CLOUDS OVER KRNTK RYLSM S COTL AP REST KER REST TN (.)

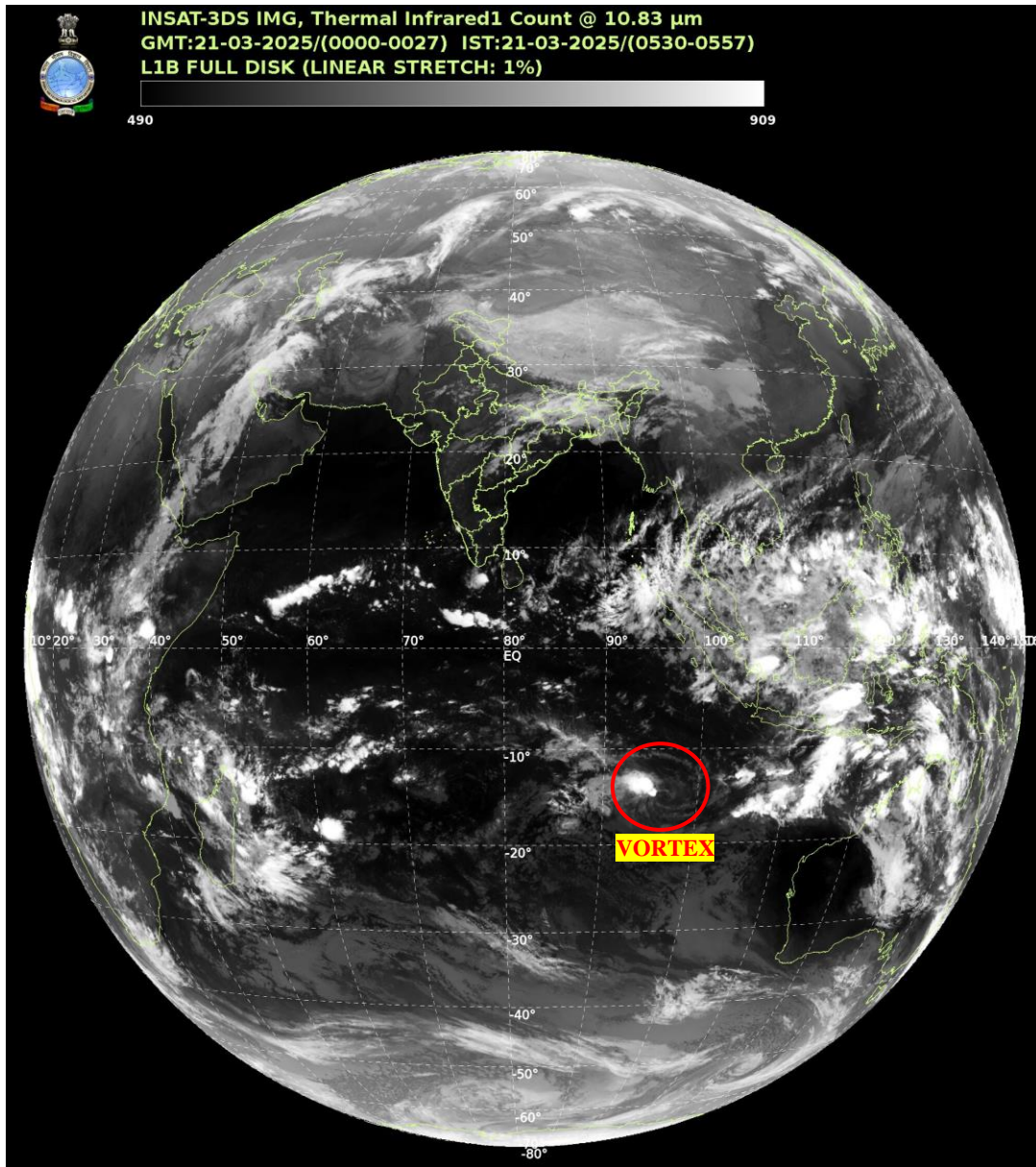
**ARABIAN SEA:-**

SCT LOW/MED CLOUDS WITH EMBDD MOD TO INT CONVTN OVER SOUTH ARSEA SOUTH OF LAT 10.0N MALDIVES & COMORIN AREA (.) SCT LOW/MED CLOUDS WITH EMBDD ISOL WK TO MOD CONVTN OVER SE ARSEA OFF KER COAST & LKSDP ILS AREA (.)

**BAY OF BENGAL & ANDAMAN SEA:-**

SCT LOW/MED CLOUDS WITH EMBDD MOD TO INT CONVTN OVER SOUTH BAY AND ANDAMAN SEA (.) SCT LOW/MED CLOUDS WITH EMBDD WK CONVTN OVER NORTH BAY ADJ GWB-BD COASTS (.)

**CLOUDS DESCRIPTION OUTSIDE INDIA:-**



**VORTEX OVER SOUTH INDIAN SEA (SOUTH-WEST OF COCOS ISLANDS):-**

**VORTEX OVER SOUTH INDIAN OCEAN (AREA G25 ADJ H05) CENTERED NEAR 14.8S / 96.6E (.) INTENSITY T2.0/2.0 (.) MAXIMUM SUSTAINED WINDS 28-33 KTS (.) ASSTD SCT TO BKN LOW/MED CLOUDS WITH EMBDD MOD TO INT CONVTN OVER AREA BET LAT 12.0S TO 15.0S LONG 91.0E TO 96.0E (.)**

**SCT LOW/MED CLOUDS WITH EMBDD MOD TO INT CONVTN OVER SOUTH SRI LANKA GULF OF MANNAR MALDIVES NEPAL BHUTAN TIBET CHINA EAST CHINA SEA NORTH MYANMAR THAILAND GULF OF THAILAND CAMBODIA VIETNAM SUMATRA STR OF MALACCA MALAYSIA BORNEO SOUTH CHINA SEA JAVA ILS & SEA CELEBES ILS & SEA PHILIPPINES SULU SEA MADAGASCAR MOZAMBIQUE CHANNEL AND OVER INDIAN OCEAN BET LAT 5.0N TO 20.0S LONG 40.0E TO 125.0E AND BET LAT 20.0S TO 30.0S LONG 40.0E TO 60.0E (.)**

TOO 21/0715 EF=

NNNN

**LEGEND:-**

REGION	NORTH	J&K HP PJB HARY DLH UP UTRKND
	EAST	BHR JHRKND CHTGH ORS WB SKM NORTH- EAST STATES
	WEST	RAJ MP GUJ MAHA GOA
	SOUTH	TLNGN AP KRNTK KER TN LKSDP ANDAMAN & NICOBAR ILS

<b>CLOUD DISTRIBUTION</b>	<b>ISOL</b>	<b>ISOLATED (LESS THAN 25%)</b>	
	<b>SCT</b>	<b>SCATTERED (25 TO 50%)</b>	
	<b>BKN</b>	<b>BROKEN (51 TO 75%)</b>	
	<b>SLD</b>	<b>SOLID (GREATER THAN 75%)</b>	
<b>CLOUDS TOP TEMPERATURE</b>	<b>CTT</b>	<b>CLOUD TOP TEMPERATURE</b>	
<b>CONVECTION</b>	<b>WK CONVTN</b>	<b>WEAK CONVECTION (CTT GREATER THAN -25°C)</b>	
	<b>MOD CONVTN</b>	<b>MODERATE CONVECTION (CTT BETWEEN -25°C TO -40°C)</b>	
	<b>INT CONVTN</b>	<b>INTENSE CONVECTION (CTT BETWEEN -41°C TO -70°C)</b>	
	<b>V INT CONVTN</b>	<b>VERY INTENSE CONVECTION (CTT LESS THAN -70°C)</b>	
<b>METEOROLOGICAL SUB- DIVISIONS, STATES &amp; UNION TERRITORIES</b>	<b>ARUPR</b>	<b>ARUNACHAL PRADESH</b>	
	<b>BHR</b>	<b>BIHAR</b>	
	<b>CHTGH</b>	<b>CHHATTISGARH</b>	
	<b>COTL AP</b>	<b>COASTAL ANDHRA PRADESH</b>	
	<b>COTL KRNTK</b>	<b>COASTAL KARNATAKA</b>	
	<b>COTL ORS</b>	<b>COASTAL ORISSA</b>	
	<b>GUJ</b>	<b>GUJARAT</b>	
	<b>GWB</b>	<b>GANGETIC WEST BENGAL</b>	
	<b>HARY</b>	<b>HARYANA</b>	
	<b>DLH</b>	<b>DELHI</b>	
	<b>HP</b>	<b>HIMACHAL PRADESH</b>	
	<b>J&amp;K</b>	<b>JAMMU AND KASHMIR</b>	
	<b>JHRKND</b>	<b>JHARKHAND</b>	
	<b>KER</b>	<b>KERALA</b>	
	<b>KKN</b>	<b>KONKAN</b>	
	<b>LKSDP</b>	<b>LAKSHADWEEP</b>	
	<b>M MAHA</b>	<b>MADHYA MAHARASHTRA</b>	
	<b>MAHA</b>	<b>MAHARASHTRA</b>	
	<b>MANI</b>	<b>MANIPUR</b>	
	<b>MEGHA</b>	<b>MEGHALAYA</b>	
	<b>MIZO</b>	<b>MIZORAM</b>	
	<b>MP</b>	<b>MADHYA PRADESH</b>	
		<b>MRTHWD</b>	<b>MARATHWADA</b>
		<b>NAGA</b>	<b>NAGALAND</b>
<b>N COTL AP</b>		<b>NORTH COASTAL ANDHRA PRADESH</b>	
<b>NIK</b>		<b>NORTH INTERIOR KARNATAKA</b>	
<b>ORS</b>		<b>ORISSA</b>	
<b>PJB</b>		<b>PUNJAB</b>	
<b>RAJ</b>		<b>RAJASTHAN</b>	
<b>RYLSM</b>		<b>RAYALASEEMA</b>	
<b>SAU &amp; KUTCH</b>		<b>SAURASHTRA &amp; KUTCH</b>	
<b>SHWB</b>		<b>SUB-HIMALAYAN WEST BENGAL</b>	
<b>SIK</b>		<b>SOUTH INTERIOR KARNATAKA</b>	
<b>SKM</b>		<b>SIKKIM</b>	

	<b>TLNGN</b>	<b>TELANGANA</b>
	<b>TN</b>	<b>TAMIL NADU</b>
	<b>TRP</b>	<b>TRIPURA</b>
	<b>UP</b>	<b>UTTAR PRADESH</b>
	<b>UTRKND</b>	<b>UTTARAKHAND</b>
	<b>VID</b>	<b>VIDHARBHA</b>
	<b>SHWB</b>	<b>SUB HIMALAYAN WEST BENGAL</b>
	<b>GWB</b>	<b>GANGETIC WEST BENGAL</b>
	<b>ARSEA</b>	<b>ARABIAN SEA</b>
	<b>ILS</b>	<b>ISLANDS</b>
<b>MISCELLANEOUS</b>	<b>ASSW</b>	<b>IN ASSOCIATION WITH</b>
	<b>ASSTD</b>	<b>ASSOCIATED</b>
	<b>LLC</b>	<b>LOW LEVEL CIRCULATION</b>
	<b>EMBDD</b>	<b>EMBEDDED</b>
	<b>N/HOOD</b>	<b>NEIGHBOURHOOD</b>
	<b>EXT</b>	<b>EXTREME</b>