



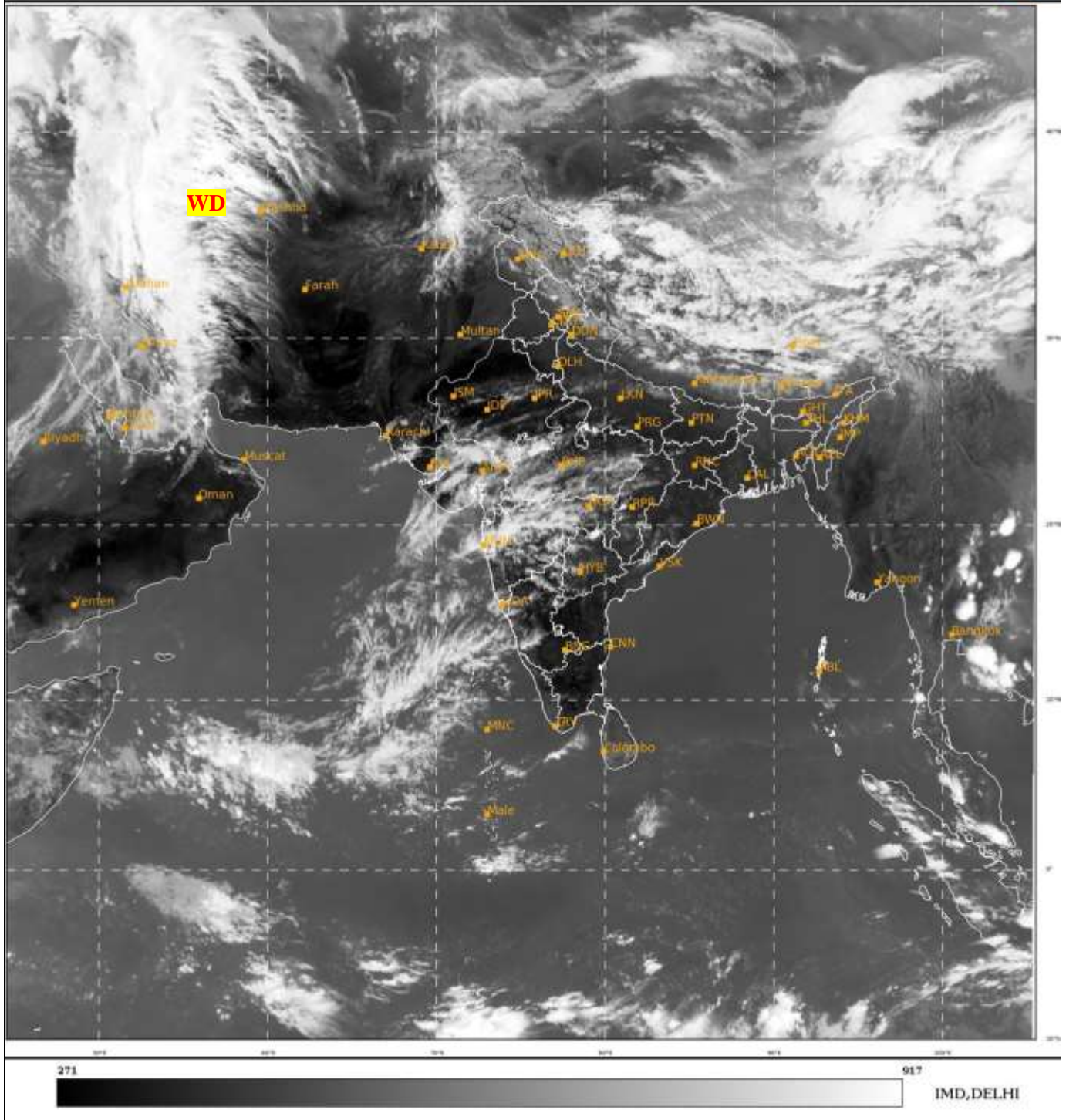
भारत मौसम विज्ञान विभाग
पृथ्वी विज्ञान मंत्रालय
India Meteorological Department
Ministry of Earth Sciences



**SATELLITE BULLETIN BASED ON SATELLITE
IMAGERIES AND PRODUCTS**
13.04.2023 TIME 0900 UTC

SAT : INSAT-3D IMG
IMG_TIR1 10.8 um
LIC Mercator

13-04-2023/(0900 to 0926) GMT
13-04-2023/(1430 to 1456) IST



TCIN50 DEMS 130900

SATELLITE BULLETIN BASED ON INSAT-3D PIC OF 130900 UTC (.)

REGION COVERED BETWEEN LAT 50.0°N TO 35.0°S AND LONG 40.0°E TO 125.0°E (.)

SALIENT FEATURES:-

WESTERN DISTURBANCE (WD):-

SCT MULTILAYERED CLOUDS OVER IRAN CASPEAN SEA & N/HOOD IN ASSW **WD** OVER THE AREA (.)

THUNDERSTORM/ CONVECTIVE ACTIVITY:-

MODERATE TO INTENSE THUNDERSTORM / CONVECTIVE ACTIVITY OBSERVED OVER S RAJ MP GUJ MAHA NIK WCHTGH (.)



INSAT-3D 13-APR-2023 09:00 WV IMG

WATER VAPOUR WIND

(1 Kt = 0.5 m/s)

10 Kt

15 Kt

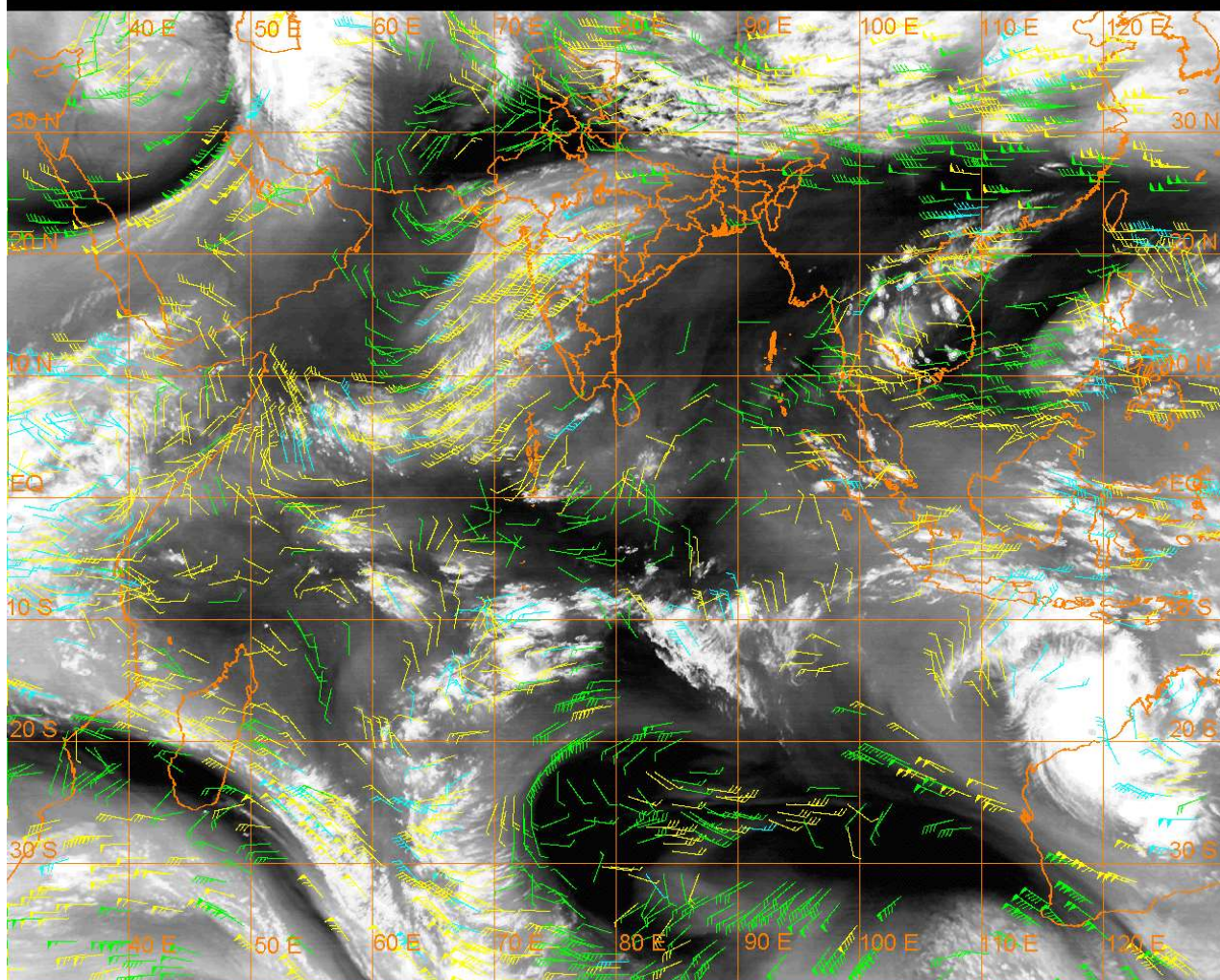
20 Kt

50 Kt

100-250 hPa

251-350 hPa

351-500 hPa



CLOUDS DESCRIPTION WITHIN INDIA:-

NORTH:-

SCT LOW/MED CLOUDS WITH EMBDD ISOL MOD TO INT CONVTN OVER E LADAKH (.) SCT LOW/MED CLOUDS WITH EMBDD WK TO MOD CONVTN OVER REST LADAKH N J&K N HP N UTRKND W UP (.) SCT LOW/MED CLOUDS OVER S J&K S HP S UTRKND S UP (.)

EAST:-

SCT LOW/MED CLOUDS WITH EMBDD MOD TO INT CONVTN OVER WC CHTGH SKM ARUPR (.) SCT LOW/MED CLOUDS WITH EMBDD WK TO MOD CONVTN OVER W JHRKND REST CHTGH S ORS (.) SCT LOW/MED CLOUDS OVER N ORS (.)

WEST:-

SCT LOW/MED CLOUDS WITH EMBDD INT TO V INT CONVTN OVER EXT S RAJ S MP GUJ NORTH MAHA AND WK TO MOD CONVTN OVER REST S RAJ REST MP REST MAHA (.) SCT LOW/MED CLOUDS OVER N MP S KKN (.)

SOUTH:-

SCT LOW/MED CLOUDS WITH EMBDD ISOL WK TO MOD CONVTN OVER NE TLNGN N SIK NIK W TLNGN (.) SCT LOW/MED CLOUDS OVER N COTL AP WC RYLSM LKSDP ILS (.)

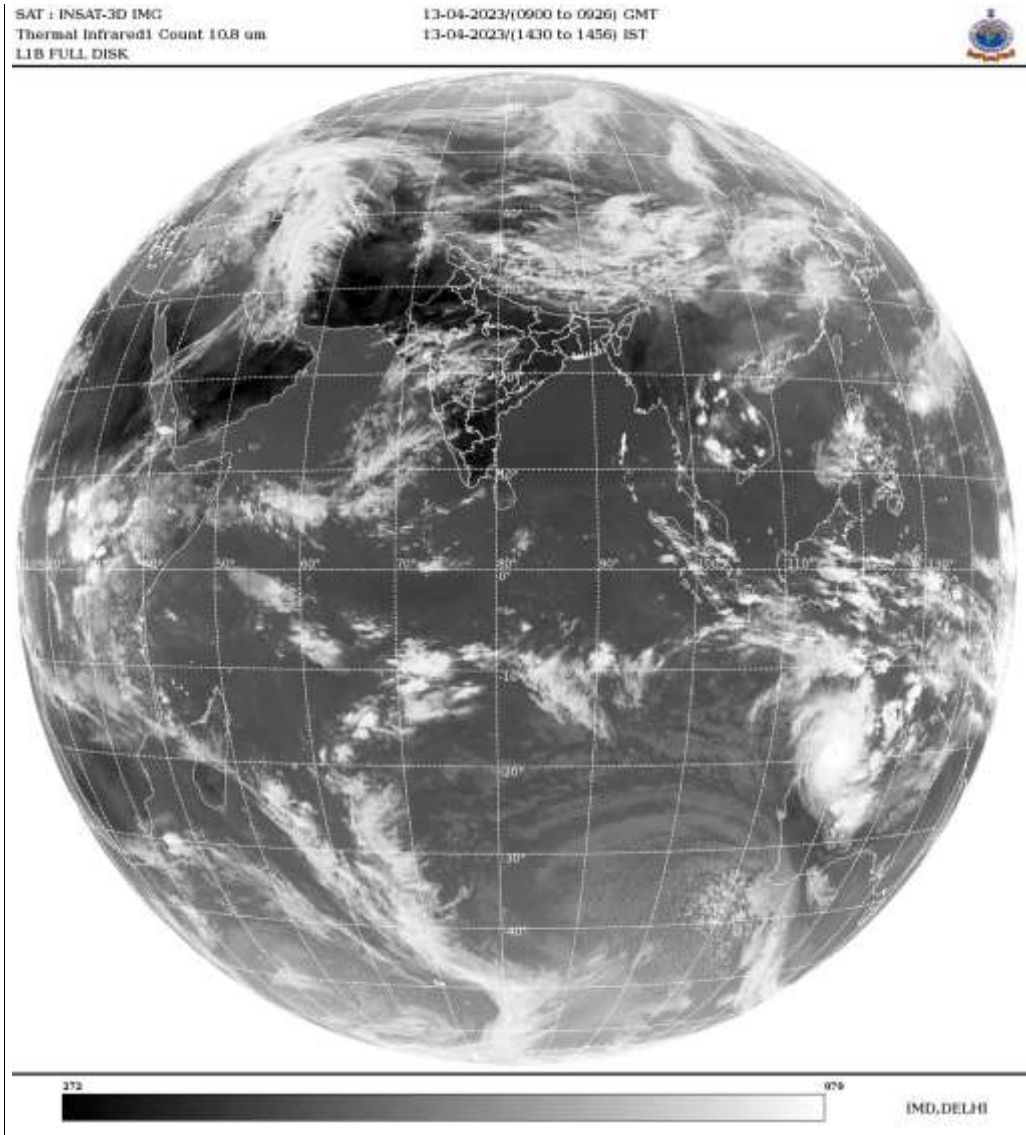
ARABIAN SEA:-

SCT LOW/MED CLOUDS WITH EMBDD INT TO VINT CONVTN OVER SOUTH ARSEA COMORI AREA AND MOD TO INT CONVTN OVER NE ADJ EC ARSEA (.)

BAY OF BENGAL & ANDAMAN SEA:-

SCT LOW/MED CLOUDS WITH EMBDD ISOL WK TO MOD CONVTN OVER ANDAMAN SEA AND WK CONVTN OVER SOUTH BAY (.)

CLOUDS DESCRIPTION OUTSIDE INDIA:-



VORTEX (ILSA) OVER S INDIA OCEAN:-

VORTEX (**ILSA**) OVER S INDIA OCEAN (**AREA G30**) CENTERED NEAR **19.1S/118.8E** (.) INTENSITY **T7.0/7.0** (.) WIND SPEED **120 KTS & ABOVE** (.)ASSTD BKN LOW/MED CLOUDS WITH EMBDD INT TO V INT CONVTN OVER AREA BET LAT 13.0S TO 23.5S LONG 113.5E TO 122.7E (.)

SCT LOW/MED CLOUDS WITH EMBDD MOD TO INT CONVTN OVER MALDIVES E TIBET CHINA THAILAND GULF OF N THAILAND CAMBODIA LAOS SUMATRA MALAYSIYA BORNEO SOUTH CHINA SEA JAVA ILS & SEA CELEBES ILS & SEA GULF OF TONKIN HAINAN PHILIPPINES EAST CHINA SEA MADAGASCAR MOZAMBIQUE CHANNEL AND OVER INDIAN OCEAN BET EQ TO LAT 35.0S LONG 50.0E TO 70.0E AND BET LAT 9.0S TO 20.0S LONG 70.0E TO 120.0E (.)

TOO 13/1600 HRS IST=

NNNN

LEGEND:-

REGION	NORTH	J&K HP PJB HARY DLH UP UTRKND
	EAST	BHR JHRKND CHTGH OR WB SKM NORTH- EAST STATES
	WEST	RAJ MP GUJ MAHA GOA
	SOUTH	TLNGN AP KRNTK KER TN LKSDP ANDAMAN & NICOBAR ILS

CLOUD DISTRIBUTION	ISOL	ISOLATED (LESS THAN 25%)
	SCT	SCATTERED (25 TO 50%)
	BKN	BROKEN (51 TO 75%)
	SLD	SOLID (GREATER THAN 75%)
CLOUDS TOP TEMPERATURE	CTT	CLOUD TOP TEMPERATURE
CONVECTION	WK CONVTN	WEAK CONVECTION (CTT GREATER THAN -25°C)
	MOD CONVTN	MODERATE CONVECTION (CTT BETWEEN -25°C TO -40°C)
	INT CONVTN	INTENSE CONVECTION (CTT BETWEEN -41°C TO -70°C)
	V INT CONVTN	VERY INTENSE CONVECTION (CTT LESS THAN -70°C)
METEOROLOGICAL SUB- DIVISIONS, STATES & UNION TERITORIES	ARUPR	ARUNACHAL PRADESH
	BHR	BIHAR
	CHTGH	CHHATTISGARH
	COTL AP	COASTAL ANDHRA PRADESH
	COTL KRNTK	COASTAL KARNATAKA
	COTL ORS	COASTAL ORISSA
	GUJ	GUJARAT
	GWB	GANGETIC WEST BENGAL
	HARY	HARYANA
	DLH	DELHI
	HP	HIMACHAL PRADESH
	J&K	JAMMU AND KASHMIR
	JHRKND	JHARKHAND
	KER	KERALA
	KKN	KONKAN
	LKSDP	LAKSHADWEEP
	M MAHA	MADHYA MAHARASHTRA
	MAHA	MAHARASHTRA
	MANI	MANIPUR
	MEGHA	MEGHALAYA
	MIZO	MIZORAM
	MP	MADHYA PRADESH
	MRTHWD	MARATHWADA
	NAGA	NAGALAND
	N COTL AP	NORTH COASTAL ANDHRA PRADESH
	NIK	NORTH INTERIOR KARNATAKA
	ORS	ORISSA
	PJB	PUNJAB
	RAJ	RAJASTHAN
	RYLSM	RAYALASEEMA
	SAU & KUTCH	SAURASHTRA & KUTCH
	SHWB	SUB-HIMALAYAN WEST BENGAL
	SIK	SOUTH INTERIOR KARNATAKA
	SKM	SIKKIM

	TLNGN	TELANGANA
	TN	TAMIL NADU
	TRP	TRIPURA
	UP	UTTAR PRADESH
	UTRKND	UTTARAKHAND
	VID	VIDHARBHA
	SHWB	SUB HIMALAYAN WEST BENGAL
	GWB	GANGETIC WEST BENGAL
	ARSEA	ARABIAN SEA
	ILS	ISLANDS
MISCELLANEOUS	ASSW	IN ASSOCIATION WITH
	ASSTD	ASSOCIATED
	LLC	LOW LEVEL CIRCULATION
	EMBDD	EMBEDDED
	N/HOOD	NEIGHBOURHOOD
	EXT	EXTREME