





INSAT-3D 27-OCT-2022 09:00 WV IMG

WATER VAPOUR WIND

(1Kt = 0.5 m/s)

10 Kt

15 Kt

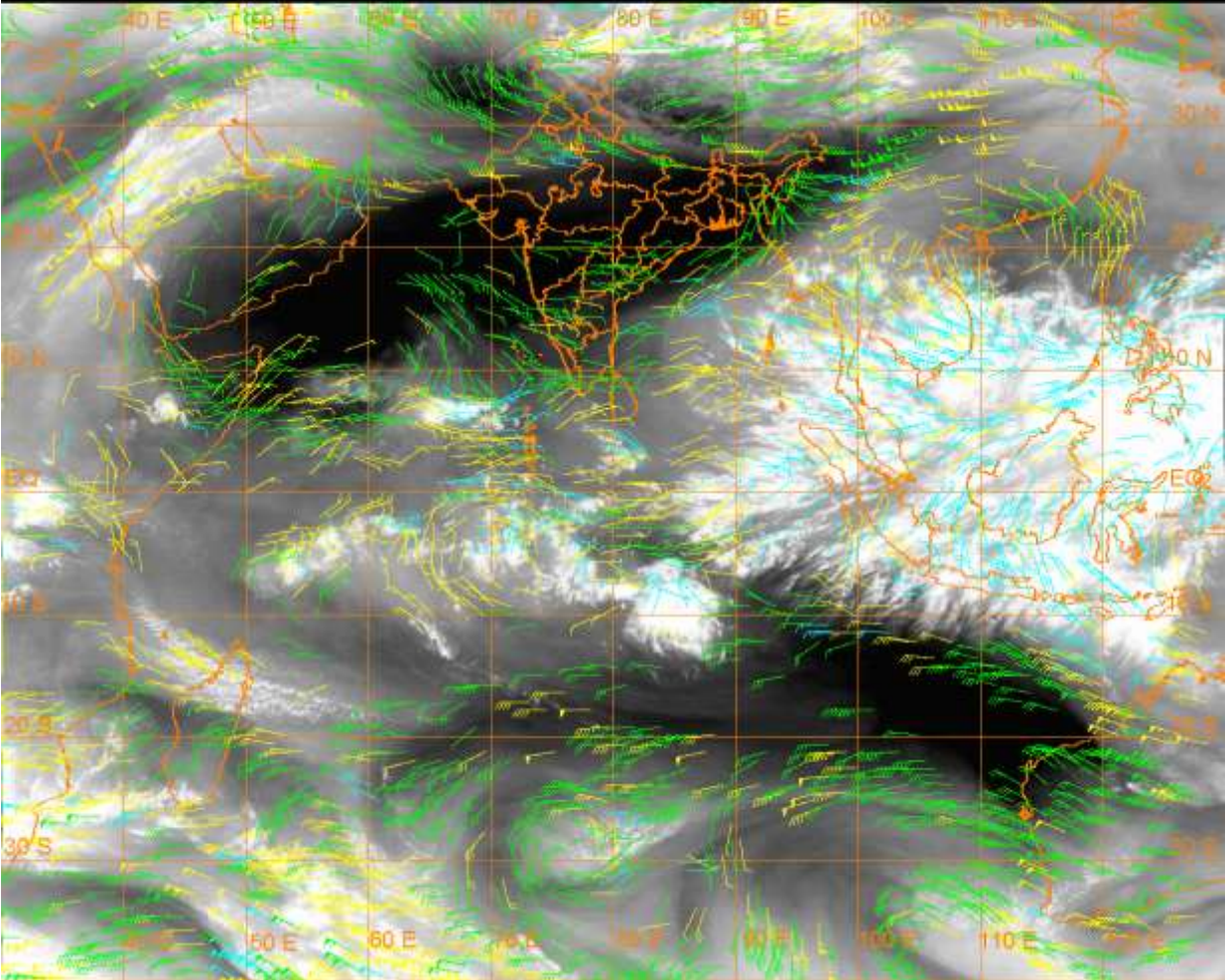
20 Kt

50 Kt

100-250 hPa

251-350 hPa

351-500 hPa



### **CLOUDS DESCRIPTION WITHIN INDIA:-**

#### **NORTH:-**

SCT LOW/MED CLOUDS WITH EMBDD MOD TO INT CONVTN OVER LADAKH (.) SCT LOW/MED CLOUDS WITH EMBDD WK CONVTN OVER J&K N HP AND N UTRKND (.) SCT LOW/MED CLOUDS OVER S HP S UTRKND (.)

#### **EAST:-**

BKN LOW/MED CLOUDS WITH EMBDD WK CONVTN OVER SKM ARUPR (.) SCT LOW/MED CLOUDS OVER SE JHRKND S CHTGH ORS GWB SHWB ASSAM MEGHA NAGA MANI MIZO (.)

#### **WEST:-**

SCT LOW/MED CLOUDS OVER RAJ GUJ S MP NORTH MADHYA MAHA NW VID (.)

#### **SOUTH:-**

SCT LOW/MED CLOUDS WITH EMBDD MOD TO INT CONVTN OVER ANDAMAN & NICOBAR ILS (.) ISOL TO SCT LOW/MED CLOUDS OVER SE NIK TLNGN RYLSM AP TN E KER (.)

#### **ARABIAN SEA:-**

SCT LOW/MED CLOUDS WITH EMBDD INT TO V INT CONVTN OVER SE ADJ SW ARSEA (.) SCT LOW/MED CLOUDS WITH EMBDD MOD TO INT CONVTN OVER REST PARTS OF SW ARSEA (.)

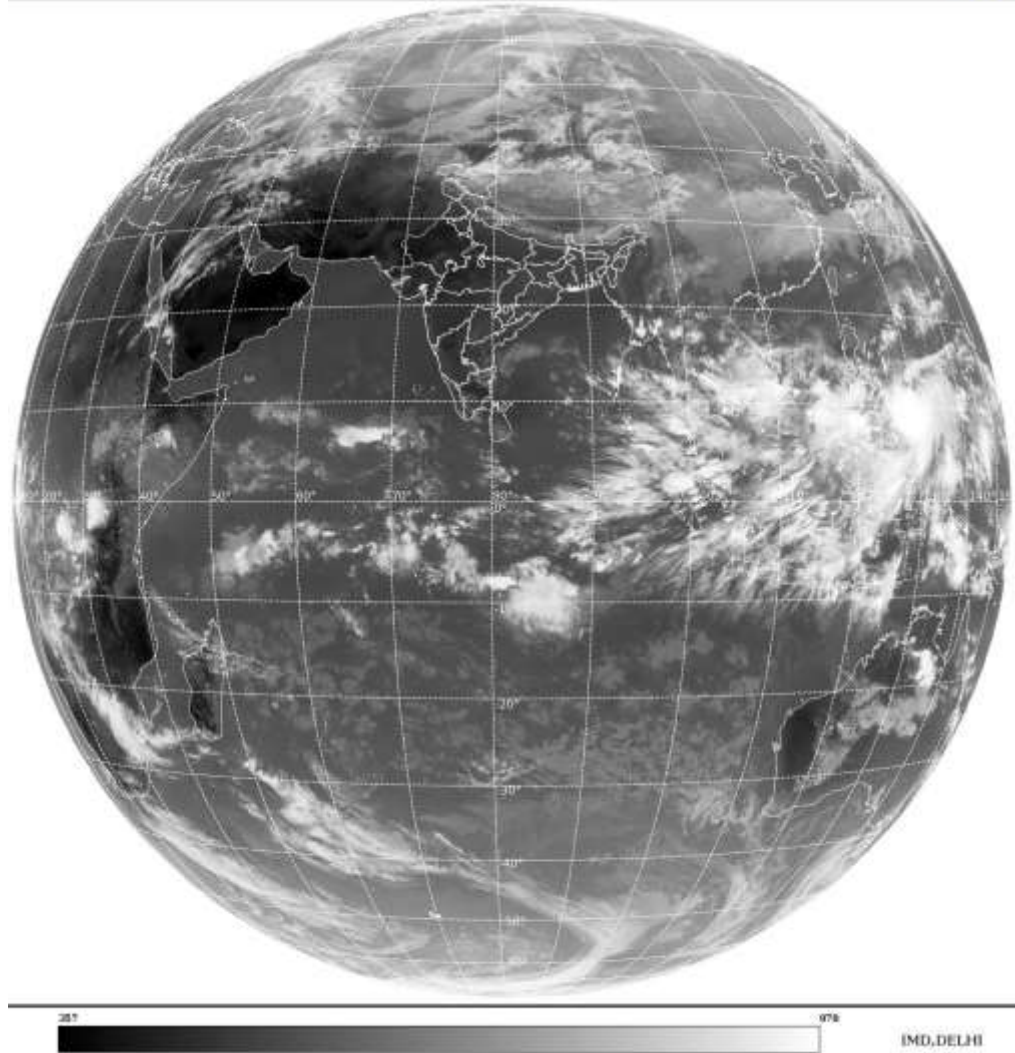
#### **BAY OF BENGAL & ANDAMAN SEA:-**

SCT LOW/MED CLOUDS WITH EMBDD INT TO V INT CONVTN OVER EC ADJ SE BAY ANDAMAN SEA AND GULF OF MARATABAN TENASERIM COT (.) SCT LOW/MED CLOUDS WITH EMBDD MOD TO INT CONVTN OVER CENTRAL PARTS OF SOUTH BAY (.)

**CLOUDS DESCRIPTION OUTSIDE INDIA:-**

SAT : INSAT-3D IMG  
Thermal Infrared1 Count 10.8 um  
LIB FULL DISK

27-10-2022(0900 to 0926) GMT  
27-10-2022(1430 to 1456) IST



**SCT LOW/MED CLOUDS WITH EMBDD MOD TO INT CONVTN OVER MALDIVES TIBET CHINA YELLOW SEA MYANMAR THAILAND GULF OF THAILAND CAMBODIA VIETNAM LAOS SUMATRA STR OF MALACCA MALAYSIA BORNEO SOUTH CHINA SEA JAVA ILS & SEA CELEBES ILS & SEA PHILIPPINES SULU SEA AND OVER INDIAN OCEAN BET LAT 5.0N TO 13.0S LONG 51.0E TO 120.0E (.)**

**TOO 27/1540 HRS IST=**

**NNNN**

**LEGEND:-**

<b>REGION</b>	<b>NORTH</b>	<b>J&amp;K HP PJB HARY DLH UP UTRKND</b>
	<b>EAST</b>	<b>BHR JHRKND CHTGH OR WB SKM NORTH- EAST STATES</b>
	<b>WEST</b>	<b>RAJ MP GUJ MAHA GOA</b>
	<b>SOUTH</b>	<b>TLNGN AP KRNTK KER TN LKSDP ANDAMAN &amp; NICOBAR ILS</b>

<b>CLOUD DISTRIBUTION</b>	<b>ISOL</b>	<b>ISOLATED (LESS THAN 25%)</b>	
	<b>SCT</b>	<b>SCATTERED (25 TO 50%)</b>	
	<b>BKN</b>	<b>BROKEN (51 TO 75%)</b>	
	<b>SLD</b>	<b>SOLID (GREATER THAN 75%)</b>	
<b>CLOUDS TOP TEMPERATURE</b>	<b>CTT</b>	<b>CLOUD TOP TEMPERATURE</b>	
<b>CONVECTION</b>	<b>WK CONVTN</b>	<b>WEAK CONVECTION (CTT GREATER THAN -25°C)</b>	
	<b>MOD CONVTN</b>	<b>MODERATE CONVECTION (CTT BETWEEN -25°C TO -40°C)</b>	
	<b>INT CONVTN</b>	<b>INTENSE CONVECTION (CTT BETWEEN -41°C TO -70°C)</b>	
	<b>V INT CONVTN</b>	<b>VERY INTENSE CONVECTION (CTT LESS THAN -70°C)</b>	
<b>METEOROLOGICAL SUB-DIVISIONS, STATES &amp; UNION TERRITORIES</b>	<b>ARUPR</b>	<b>ARUNACHAL PRADESH</b>	
	<b>BHR</b>	<b>BIHAR</b>	
	<b>CHTGH</b>	<b>CHHATTISGARH</b>	
	<b>COTL AP</b>	<b>COASTAL ANDHRA PRADESH</b>	
	<b>COTL KRNTK</b>	<b>COASTAL KARNATAKA</b>	
	<b>COTL ORS</b>	<b>COASTAL ORISSA</b>	
	<b>GUJ</b>	<b>GUJARAT</b>	
	<b>GWB</b>	<b>GANGETIC WEST BENGAL</b>	
	<b>HARY</b>	<b>HARYANA</b>	
	<b>DLH</b>	<b>DELHI</b>	
	<b>HP</b>	<b>HIMACHAL PRADESH</b>	
	<b>J&amp;K</b>	<b>JAMMU AND KASHMIR</b>	
	<b>JHRKND</b>	<b>JHARKHAND</b>	
	<b>KER</b>	<b>KERALA</b>	
	<b>KKN</b>	<b>KONKAN</b>	
	<b>LKSDP</b>	<b>LAKSHADWEEP</b>	
	<b>M MAHA</b>	<b>MADHYA MAHARASHTRA</b>	
	<b>MAHA</b>	<b>MAHARASHTRA</b>	
	<b>MANI</b>	<b>MANIPUR</b>	
	<b>MEGHA</b>	<b>MEGHALAYA</b>	
	<b>MIZO</b>	<b>MIZORAM</b>	
	<b>MP</b>	<b>MADHYA PRADESH</b>	
		<b>MRTHWD</b>	<b>MARATHWADA</b>
		<b>NAGA</b>	<b>NAGALAND</b>
<b>N COTL AP</b>		<b>NORTH COASTAL ANDHRA PRADESH</b>	
<b>NIK</b>		<b>NORTH INTERIOR KARNATAKA</b>	
<b>ORS</b>		<b>ORISSA</b>	
<b>PJB</b>		<b>PUNJAB</b>	
<b>RAJ</b>		<b>RAJASTHAN</b>	
<b>RYLSM</b>		<b>RAYALASEEMA</b>	
<b>SAU &amp; KUTCH</b>		<b>SAURASHTRA &amp; KUTCH</b>	
<b>SHWB</b>		<b>SUB-HIMALAYAN WEST BENGAL</b>	
<b>SIK</b>		<b>SOUTH INTERIOR KARNATAKA</b>	
<b>SKM</b>		<b>SIKKIM</b>	

	<b>TLNGN</b>	<b>TELANGANA</b>
	<b>TN</b>	<b>TAMIL NADU</b>
	<b>TRP</b>	<b>TRIPURA</b>
	<b>UP</b>	<b>UTTAR PRADESH</b>
	<b>UTRKND</b>	<b>UTTARAKHAND</b>
	<b>VID</b>	<b>VIDHARBHA</b>
	<b>SHWB</b>	<b>SUB HIMALAYAN WEST BENGAL</b>
	<b>GWB</b>	<b>GANGETIC WEST BENGAL</b>
	<b>ARSEA</b>	<b>ARABIAN SEA</b>
	<b>ILS</b>	<b>ISLANDS</b>
<b>MISCELLANEOUS</b>	<b>ASSW</b>	<b>IN ASSOCIATION WITH</b>
	<b>ASSTD</b>	<b>ASSOCIATED</b>
	<b>LLC</b>	<b>LOW LEVEL CIRCULATION</b>
	<b>EMBDD</b>	<b>EMBEDDED</b>
	<b>N/HOOD</b>	<b>NEIGHBOURHOOD</b>
	<b>EXT</b>	<b>EXTREME</b>