



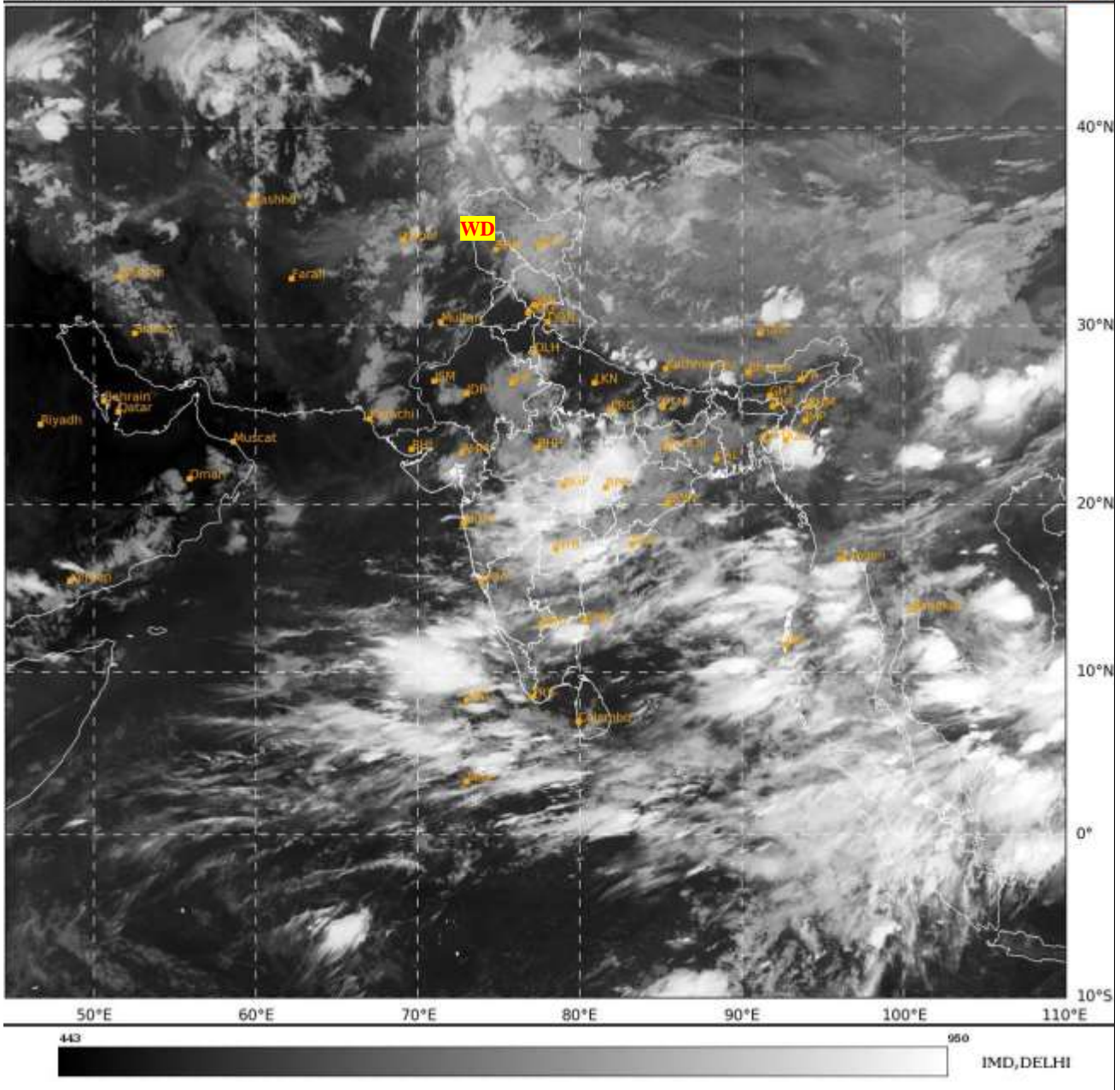
भारत मौसम विज्ञान विभाग  
पृथ्वी विज्ञान मंत्रालय  
India Meteorological Department  
Ministry of Earth Sciences



**SATELLITE BULLETIN BASED ON SATELLITE  
IMAGERIES AND PRODUCTS**  
**21.06.2024 TIME 1800 UTC**

SAT : INSAT-3DR IMG  
IMG\_TIR1 10.8 um  
LIC Mercator

21-06-2024/(1715 to 1742) GMT  
21-06-2024/(2245 to 2312) IST



TCIN50 DEMS 211800

SATELLITE BULLETIN BASED ON INSAT-3DR PIC OF 211715 UTC (.)

REGION COVERED BETWEEN LAT 50.0°N TO 35.0°S AND LONG 40.0°E TO 125.0°E (.)

**SALIENT FEATURES:-**

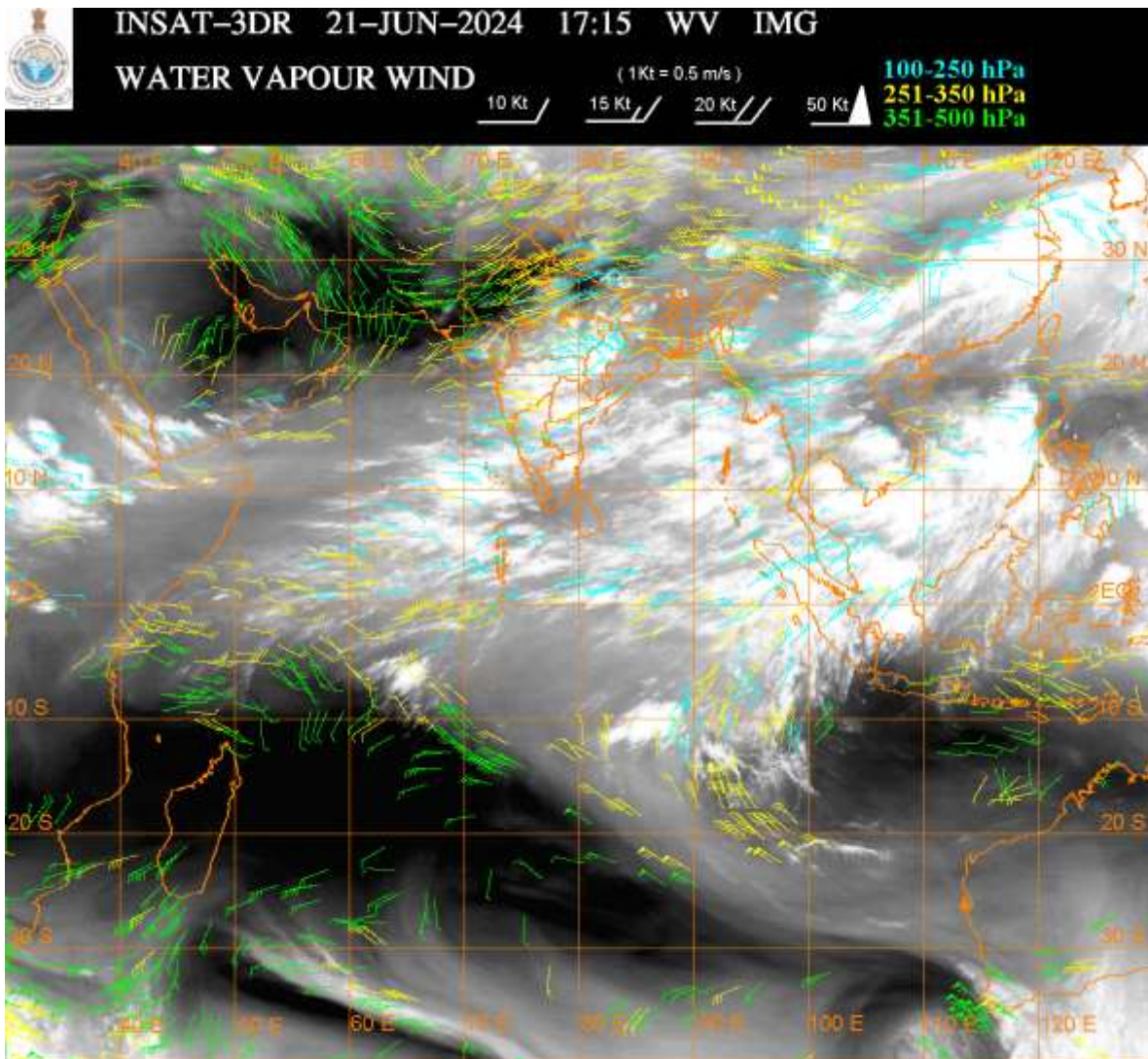
**WESTERN DISTURBANCE (WD):-**

SCT MULTILAYERED CLOUDS OVER PAK LADAKH J&K HP PJB UTRKND ADJ NW UP IN ASSW  
**WD** OVER THE AREA (.)

**CONVECTIVE / THUNDERSTORM ACTIVITY:-**

INTENSE CONVECTIVE / THUNDERSTORM ACTIVITY OBSERVED OVER E MP CHTGH E VID NW  
TLNGN CENTRAL COTL AP NE TN MIZO & LKSDP ILS AREA (MINIMUM **CTT MINUS 75-93 DEG  
CEL**) (.)

MODERATE TO INTENSE CONVECTIVE / THUNDERSTORM ACTIVITY OBSERVED OVER REST  
VID MRTHWD REST TLNGN N COTL AP (MINIMUM **CTT MINUS 55-70 DEG CEL**) (.)



**CLOUDS DESCRIPTION WITHIN INDIA:-**

**NORTH:-**

SCT LOW/MED CLOUDS WITH EMBDD MOD TO INT CONVTN OVER SE UP (.) AND WK TO MOD CONVTN OVER LADAKH J&K HP N PJB UTRKND S HARY REST UP (.) SCT LOW/MED CLOUDS OVER S PJB N HARY DLH (.)

**EAST:-**

SCT LOW/MED CLOUDS WITH EMBDD INT TO V INT CONVTN OVER CHTGH MIZO (.) SCT LOW/MED CLOUDS WITH EMBDD MOD TO INT CONVTN OVER SKM N SHWB TRP E JHRKND AND WK TO MOD CONVTN OVER BHR REST JHRKND ORS GWB S SHWB REST NE STATES (.)

**WEST:-**

SCT TO BKN LOW/MED CLOUDS WITH EMBDD INT TO V INT CONVTN OVER E MP E VID AND MOD TO INT CONVTN OVER MRTHWD S GUJ AND WK TO MOD CONVTN OVER RAJ W MP GOA REST MAHA (.) SCT LOW/MED CLOUDS OVER N GUJ (.)

**SOUTH:-**

SCT LOW/MED CLOUDS WITH EMBDD INT TO V INT CONVTN OVER NW TLNGN CENTRAL COTL AP NE TN LKSDP ILS AREA (.) SCT LOW/MED CLOUDS WITH EMBDD MOD TO INT CONVTN OVER KRNTK REST TLNGN REST COTL AP ANDAMAN & NICOBAR ILS AND WK TO MOD CONVTN OVER RYLSM KER REST TN (.)

**ARABIAN SEA:-**

SCT LOW/MED CLOUDS WITH EMBDD INT TO V INT CONVTN OVER SE ARSEA LKSDP ILS AREA & MALDIVES AREA (MINIMUM **CTT MINUS 70-85 DEG CEL**) (.) SCT LOW/MED CLOUDS WITH EMBDD ISOL WK TO MOD CONVTN OVER CENTRAL & SW ARSEA (.)

**BAY OF BENGAL & ANDAMAN SEA:-**

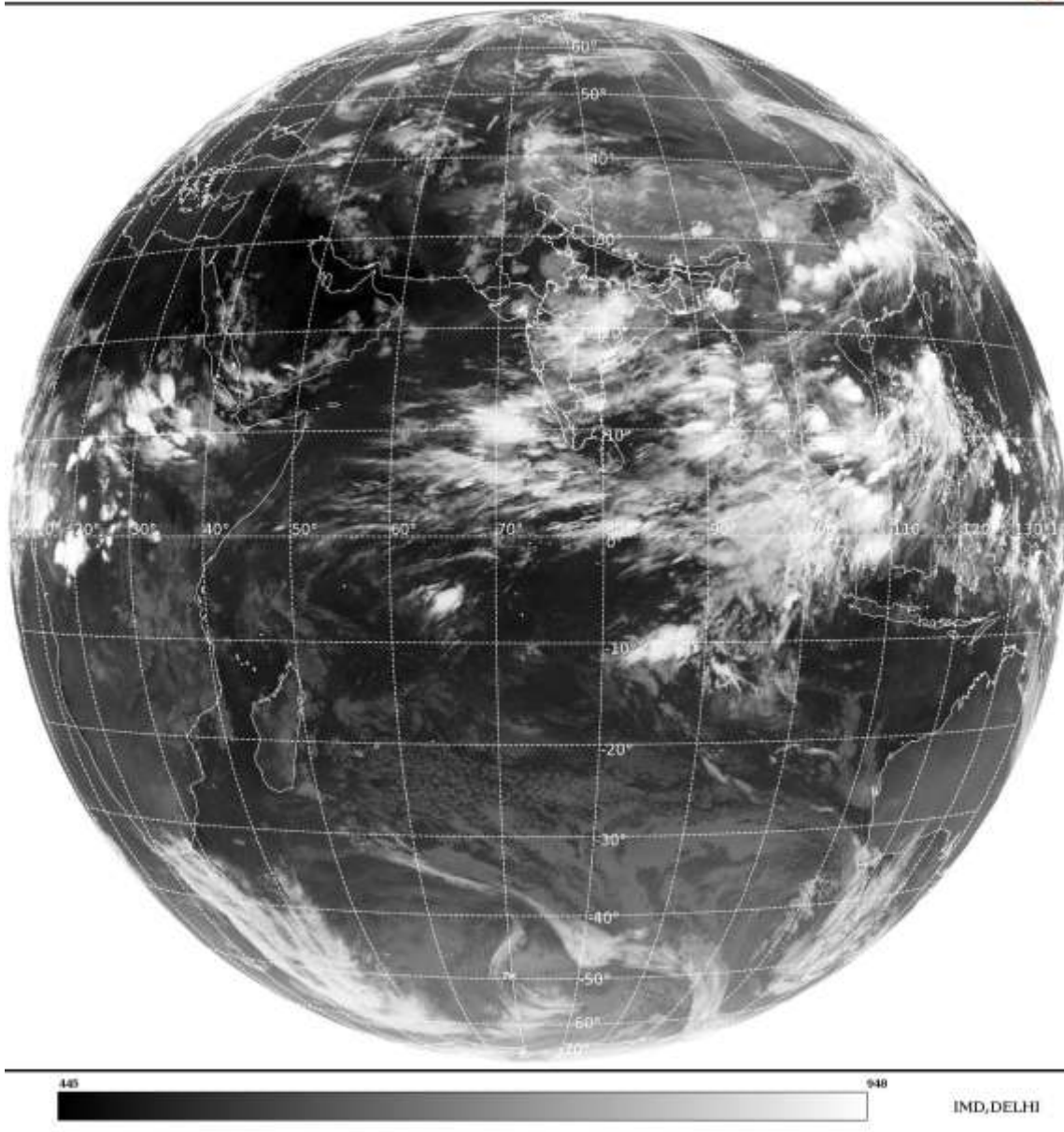
SCT LOW/MED CLOUDS WITH EMBDD INT TO V INT CONVTN OVER EC & SE BAY N ANDAMAN SEA (MINIMUM **CTT MINUS 80-93 DEG CEL**) (.) SCT LOW/MED CLOUDS WITH EMBDD MOD TO INT CONVTN OVER N BAY WC BAY & S ANDAMAN SEA (.)



**CLOUDS DESCRIPTION OUTSIDE INDIA:-**

SAT : INSAT-3DR IMG  
Thermal Infrared1 Count 10.8 um  
L1B FULL DISK

21-06-2024/(1715 to 1742) GMT  
21-06-2024/(2245 to 2312) IST



**SCT LOW/MED CLOUDS WITH EMBDD MOD TO INT CONVTN OVER MALDIVES PAK TIBET CHINA YELLOW SEA EAST CHINA SEA MYANMAR THAILAND GULF OF THAILAND CAMBODIA LAOS VIETNAM SUMATRA STR OF MALACCA MALAYSIA BORNEO SOUTH CHINA SEA CELEBES ILS & SEA PHILIPPINES AND OVER INDIAN OCEAN BET LAT 5.0N TO 12.0S LONG 60.0E TO 105.0E (.)**

**TOO 21/2350 HRS IST=**

**NNNN**

**LEGEND:-**

|                           |              |  |
|---------------------------|--------------|--|
| <b>REGION</b>             | <b>NORTH</b> | <b>J&amp;K HP PJB HARY DLH UP UTRKND</b>                         |
|                           | <b>EAST</b>  | <b>BHR JHRKND CHTGH OR WB SKM<br/>NORTH- EAST STATES</b>         |
|                           | <b>WEST</b>  | <b>RAJ MP GUJ MAHA GOA</b>                                       |
|                           | <b>SOUTH</b> | <b>TLNGN AP KRNTK KER TN LKSDP<br/>ANDAMAN &amp; NICOBAR ILS</b> |
| <b>CLOUD DISTRIBUTION</b> | <b>ISOL</b>  | <b>ISOLATED (LESS THAN 25%)</b>                                  |
|                           | <b>SCT</b>   | <b>SCATTERED (25 TO 50%)</b>                                     |
|                           | <b>BKN</b>   | <b>BROKEN (51 TO 75%)</b>  |
|                           | <b>SLD</b>   | <b>SOLID (GREATER THAN 75%)</b>                                  |

| <b>CLOUDS TOP TEMPERATURE</b>  | <b>CTT</b>                       | <b>CLOUD TOP TEMPERATURE</b>                                |
|--|----------------------------------|---|
| <b>CONVECTION</b>  | <b>WK CONV TN</b>                | <b>WEAK CONVECTION<br/>(CTT GREATER THAN -25°C)</b>         |
|  | <b>MOD CONV TN</b>               | <b>MODERATE CONVECTION<br/>(CTT BETWEEN -25°C TO -40°C)</b> |
|  | <b>INT CONV TN</b>               | <b>INTENSE CONVECTION<br/>(CTT BETWEEN -41°C TO -70°C)</b>  |
|  | <b>V INT CONV TN</b>             | <b>VERY INTENSE CONVECTION<br/>(CTT LESS THAN -70°C)</b>    |
| <b>METEOROLOGICAL SUB- DIVISIONS, STATES &amp; UNION TERRITORIES</b> | <b>ARUPR</b>                     | <b>ARUNACHAL PRADESH</b>                                    |
|  | <b>BHR</b>                       | <b>BIHAR</b>  |
|  | <b>CHTGH</b>                     | <b>CHHATTISGARH</b>   |
|  | <b>COTL AP</b>                   | <b>COASTAL ANDHRA PRADESH</b>                               |
|  | <b>COTL KRNTK</b>                | <b>COASTAL KARNATAKA</b>                                    |
|  | <b>COTL ORS</b>                  | <b>COASTAL ORISSA</b>                                       |
|  | <b>GUJ</b>                       | <b>GUJARAT</b>  |
|  | <b>GWB</b>                       | <b>GANGETIC WEST BENGAL</b>                                 |
|  | <b>HARY</b>                      | <b>HARYANA</b>  |
|  | <b>DLH</b>                       | <b>DELHI</b>  |
|  | <b>HP</b>                        | <b>HIMACHAL PRADESH</b>                                     |
|  | <b>J&amp;K</b>                   | <b>JAMMU AND KASHMIR</b>                                    |
|  | <b>JHRKND</b>                    | <b>JHARKHAND</b>  |
|  | <b>KER</b>                       | <b>KERALA</b>   |
|  | <b>KKN</b>                       | <b>KONKAN</b>   |
|  | <b>LKSDP</b>                     | <b>LAKSHADWEEP</b>  |
|  | <b>M MAHA</b>                    | <b>MADHYA MAHARASHTRA</b>                                   |
|  | <b>MAHA</b>                      | <b>MAHARASHTRA</b>  |
|  | <b>MANI</b>                      | <b>MANIPUR</b>  |
|  | <b>MEGHA</b>                     | <b>MEGHALAYA</b>  |
|  | <b>MIZO</b>                      | <b>MIZORAM</b>  |
|  | <b>MP</b>                        | <b>MADHYA PRADESH</b>                                       |
|  | <b>MRTHWD</b>                    | <b>MARATHWADA</b>   |
|  | <b>NAGA</b>                      | <b>NAGALAND</b>   |
|  | <b>N COTL AP</b>                 | <b>NORTH COASTAL ANDHRA PRADESH</b>                         |
|  | <b>NIK</b>                       | <b>NORTH INTERIOR KARNATAKA</b>                             |
| <b>ORS</b>   | <b>ORISSA</b>                    |   |
| <b>PJB</b>   | <b>PUNJAB</b>                    |   |
| <b>RAJ</b>   | <b>RAJASTHAN</b>                 |   |
| <b>RYLSM</b>   | <b>RAYALASEEMA</b>               |   |
| <b>SAU &amp; KUTCH</b>   | <b>SAURASHTRA &amp; KUTCH</b>    |   |
| <b>SHWB</b>  | <b>SUB-HIMALAYAN WEST BENGAL</b> |   |
| <b>SIK</b>   | <b>SOUTH INTERIOR KARNATAKA</b>  |   |
| <b>SKM</b>   | <b>SIKKIM</b>                    |   |
| <b>TLNGN</b>   | <b>TELANGANA</b>                 |   |
| <b>TN</b>  | <b>TAMIL NADU</b>                |   |
| <b>TRP</b>   | <b>TRIPURA</b>                   |   |
| <b>UP</b>  | <b>UTTAR PRADESH</b>             |   |

|                      |               |                                  |
|----------------------|---------------|----------------------------------|
|                      | <b>UTRKND</b> | <b>UTTARAKHAND</b>               |
|                      | <b>VID</b>    | <b>VIDHARBHA</b>                 |
|                      | <b>SHWB</b>   | <b>SUB HIMALAYAN WEST BENGAL</b> |
|                      | <b>GWB</b>    | <b>GANGETIC WEST BENGAL</b>      |
|                      | <b>ARSEA</b>  | <b>ARABIAN SEA</b>               |
|                      | <b>ILS</b>    | <b>ISLANDS</b>                   |
| <b>MISCELLANEOUS</b> | <b>ASSW</b>   | <b>IN ASSOCIATION WITH</b>       |
|                      | <b>ASSTD</b>  | <b>ASSOCIATED</b>                |
|                      | <b>LLC</b>    | <b>LOW LEVEL CIRCULATION</b>     |
|                      | <b>EMBDD</b>  | <b>EMBEDDED</b>                  |
|                      | <b>N/HOOD</b> | <b>NEIGHBOURHOOD</b>             |
|                      | <b>EXT</b>    | <b>EXTREME</b>                   |