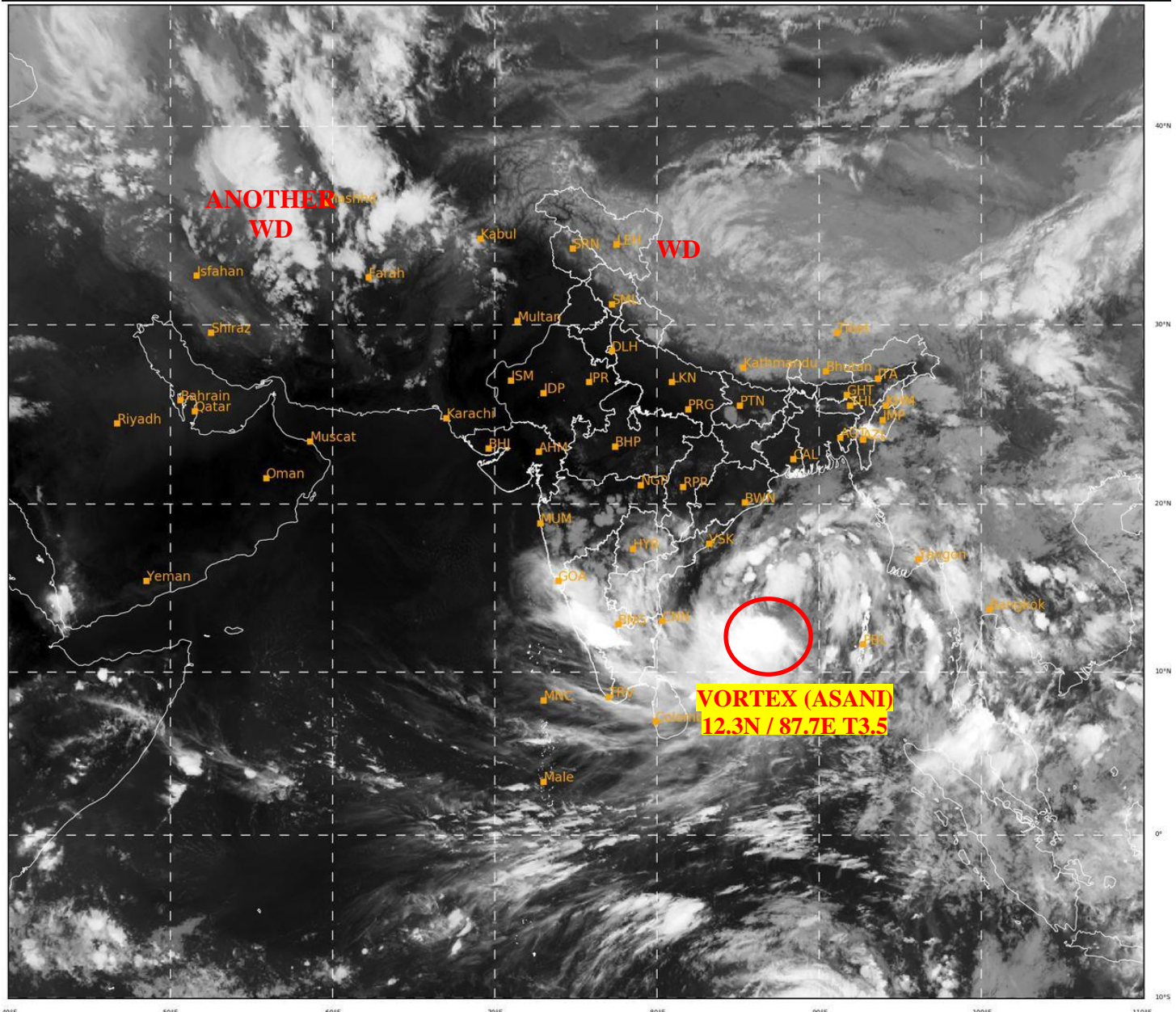




**SATELLITE BULLETIN BASED ON SATELLITE
IMAGERIES AND PRODUCTS**
08.05.2022 TIME 1500 UTC

SAT : INSAT-3D IMG
IMG_TIR1 10.8 um
LIC Mercator

08-05-2022/(1500 to 1526) GMT
08-05-2022/(2030 to 2056) IST



449

950

IMD, DELHI

TCIN50 DEMS 081500

SATELLITE BULLETIN BASED ON INSAT-3D PIC OF 081500 UTC (.)

REGION COVERED BETWEEN LAT 50.0°N TO 30.0°S AND LONG 40.0°E TO 125.0°E (.)

SALIENT FEATURES:-

VORTEX (ASANI) OVER SOUTH-EAST BAY:-

VORTEX (ASANI) OVER SOUTH-EAST BAY HAS FURTHER INTENSIFIED AND NOW LAY CENTERED NEAR 12.3N / 87.7E (.) INTENSITY T3.5/3.5 (.) ASSTD BKN LOW/MED CLOUDS WITH EMBDD INTENSE TO VERY INTENSE CONVECTION OVER AREA BET LAT 8.5N TO 14.0N AND LONG 82.0E TO 88.0E (.) MINIMUM CTT MINUS 93 DEG C (.)

WESTERN DISTURBANCE (WD):-

SCT MULTILAYERED CLOUDS OVER E LADAKH TIBET ADJ CHINA IN ASSW WD OVER THE AREA (.)

SCT MULTILAYERED CLOUDS OVER CASPIAN SEA IRAN AFGAN AND N/HOOD IN ASSW ANOTHER WD OVER THE AREA (.)

THUNDERSTORM / CONVECTIVE ACTIVITY:-

THUNDERSTORM / CONVECTIVE ACTIVITIES OBSERVED OVER NAGA EXT S ASSAM ADJ S MANI N MIZO S CHTGH S KKN ADJ GOA KRNTK TLNGN RYLSM COTL AP KER TN ANDAMAN & NICOBAR ILS (.)

DUST:

METEOSAT-8 RGB DUST PRODUCT AT 1500 UTC INDICATES DUST OVER NW RAJ (.)

PRECIPITATION NOWCASTING:-

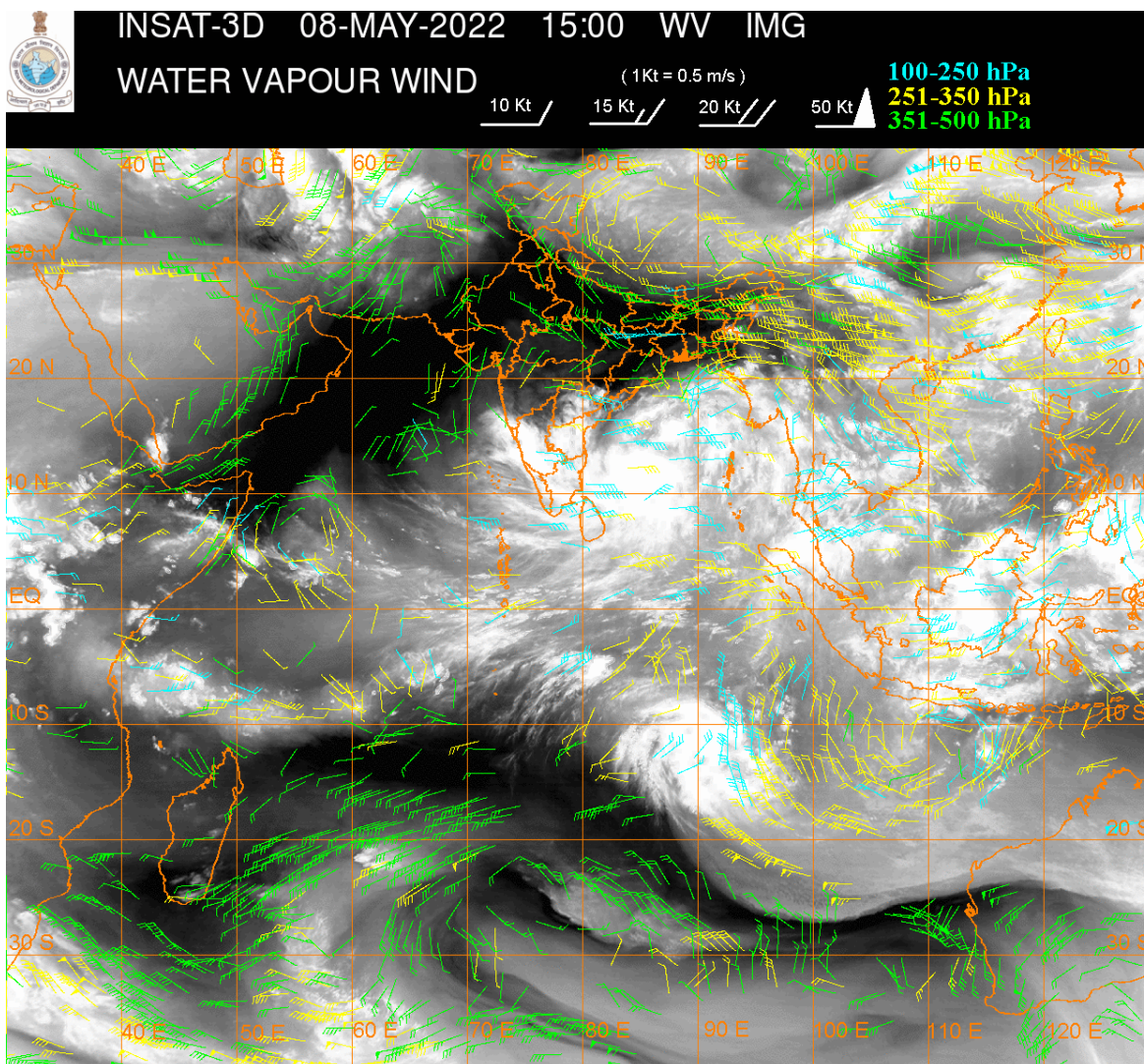
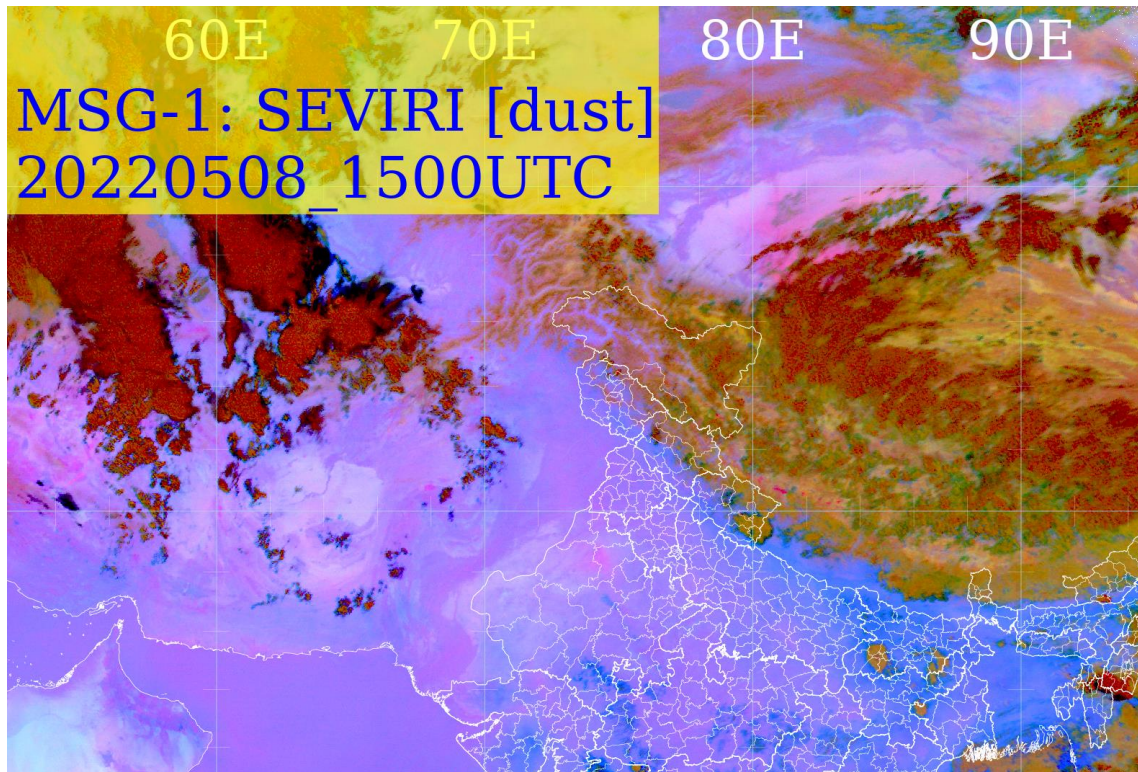
(BASED ON SCOPE NOWCASTING TOOL AT 1500 UTC AT A LEAD TIME OF 03 HRS (MM/HR):-

RAINFALL UPTO 15-20 MM LIKELY OVER S KKN ADJ GOA COTL KRNTK SIK (.)

RAINFALL UPTO 10-15 MM LIKELY OVER C TLNGN RYLSM TN ANDAMAN ILS (.)

RAINFALL UPTO 5-10 MM LIKELY OVER S MANI ADJ N MIZO EXT S CHTGH (.)

RAINFALL UPTO 0.5-5 MM LIKELY OVER S NAGA EXT NE MANI COTL AP KER NICOBAR ILS (.)



CLOUDS DESCRIPTION WITHIN INDIA:-

NORTH:-

SCT LOW/MED CLOUDS WITH EMBDD WK TO MOD CONVTN OVER LADAKH J&K N HP UTRKND (.) SCT LOW/MED CLOUDS OVER S HP EXT NE UP (.)

EAST:-

SCT LOW/MED CLOUDS WITH EMBDD INT TO V INT CONVTN OVER EXT S ASSAM ADJ S MANI N MIZO (.) SCT LOW/MED CLOUDS WITH EMBDD MOD TO INT CONVTN OVER S CHTGH SW ORS NAGA (.) SCT LOW/MED CLOUDS WITH EMBDD WK TO MOD CONVTN OVER S BHR NE JHRKND COTL ORS EXT WC & COTL GWB N SHWB SKM REST NE STATES (.) ISOL TO SCT LOW/MED CLOUDS OVER N BHR REST JHRKND N CHTGH REST ORS REST GWB S SHWB (.)

WEST:-

BKN LOW/MED CLOUDS WITH EMBDD INT TO V INT CONVTN OVER S KKN ADJ GOA (.) SCT LOW/MED CLOUDS WITH EMBDD WK TO MOD CONVTN OVER EXT SE GUJ REST MAHA (.) SCT LOW/MED CLOUDS OVER SE RAJ MP (.)

SOUTH:-

SCT TO BKN LOW/MED WITH EMBDD INT TO V INT CONVTN OVER KRNTK RYLSM S COTL AP N KER TN ANDAMAN ILS (.) SCT LOW/MED WITH EMBDD MOD TO INT CONVTN OVER S TLNGN S KER AND WK TO MOD CONVTN OVER N TLNGN N COTL AP NICOBAR ILS (.) SCT LOW/MED CLOUDS OVER LKSDP ILS (.)

ARABIAN SEA:-

SCT LOW/MED WITH EMBDD INT TO V INT CONVTN OVER EC ARSEA ADJ S MAHA GOA KRNTK COASTS AND SE ARSEA (.) SCT LOW/MED CLOUDS WITH EMBDD MOD TO INT CONVTN OVER SW ARSEA AND COMORIN AREA (.)

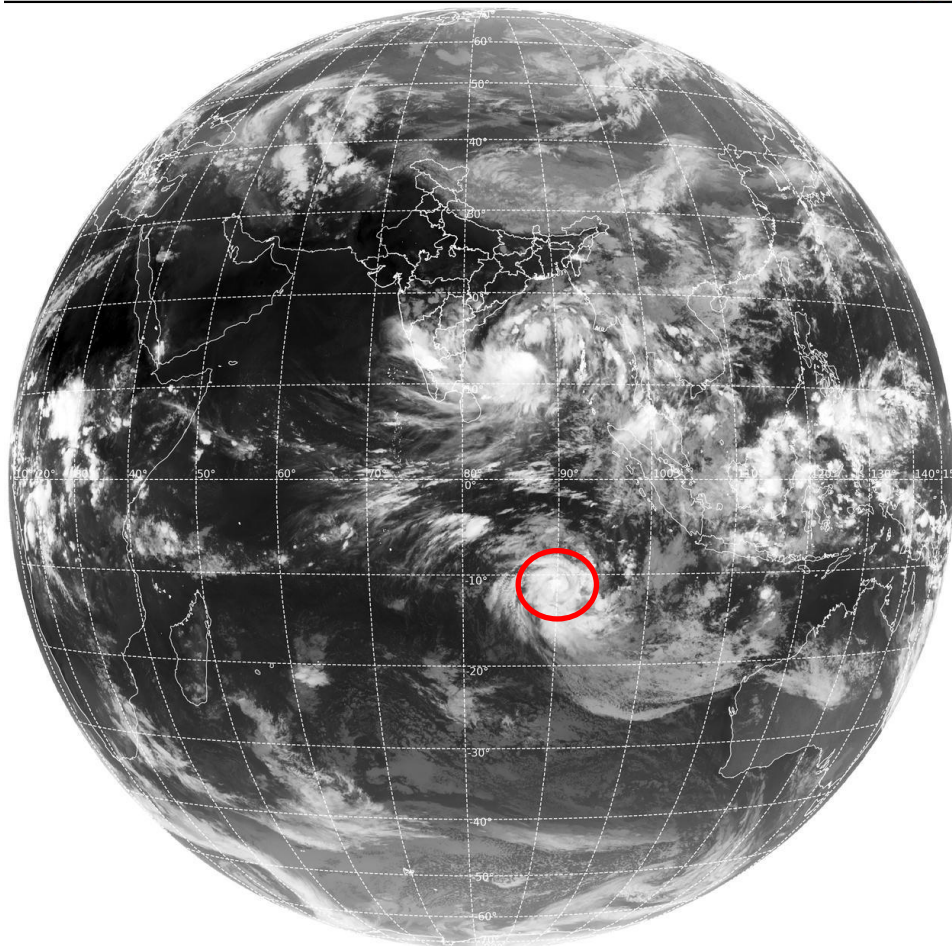
BAY OF BENGAL & ANDAMAN SEA:-

SCT TO BKN LOW/MED CLOUDS WITH EMBDD INT TO V INT CONVTN OVER BAY AND ANDAMAN SEA (.)

CLOUDS DESCRIPTION OUTSIDE INDIA:-

SAT : INSAT-3D IMG
Thermal Infrared1 Count 10.8 um
L1B FULL DISK

08-05-2022/(1500 to 1526) GMT
08-05-2022/(2030 to 2056) IST



VORTEX (KARIM) OVER SOUTH INDIAN OCEAN:-

VORTEX (KARIM) OVER SOUTH INDIAN OCEAN CENTERED NEAR 10.9S / 90.6E (.) INTENSITY T3.0/3.5 (.) ASSTD BKN LOW/MED CLOUDS WITH EMBDD INT TO V INT CONVTN OVER AREA BET LAT 8.0S TO 17.0S LONG 83.0E TO 94.0E (.)

SCT LOW/MED CLOUDS WITH EMBDD MOD TO INT CONVTN OVER SRI LANKA GULF OF MANNAR PALK STR MALDIVES TIBET CHINA YELLOW SEA E CHINA SEA TAIWAN MYANMAR THAILAND GULF OF THAILAND CAMBODIA LAOS VIETNAM GULF OF TONKIN HAINAN SUMATRA STR OF MALACCA MALAYSIA BORNEO SOUTH CHINA SEA PHILIPPINES SULU SEA AND OVER INDIAN OCEAN BET LAT 5.0N TO 10.0S LONG 40.0E TO 80.0E AND BET LAT 5.0N TO 26.0S LONG 80.0E TO 117.0E (.)

TOO 08/2215 HRS IST=

NNNN

LEGEND:-

REGION	NORTH	J&K HP PJB HARY DLH UP UTRKND
	EAST	BHR JHRKND CHTGH OR WB SKM NORTH- EAST STATES
	WEST	RAJ MP GUJ MAHA GOA
	SOUTH	TLNGN AP KRNTK KER TN LKSDP ANDAMAN & NICOBAR ILS

CLOUD DISTRIBUTION	ISOL	ISOLATED (LESS THAN 25%)
	SCT	SCATTERED (25 TO 50%)
	BKN	BROKEN (51 TO 75%)
	SLD	SOLID (GREATER THAN 75%)
CLOUDS TOP TEMPERATURE	CTT	CLOUD TOP TEMPERATURE
CONVECTION	WK CONVTN	WEAK CONVECTION (CTT GREATER THAN -25°C)
	MOD CONVTN	MODERATE CONVECTION (CTT BETWEEN -25°C TO -40°C)
	INT CONVTN	INTENSE CONVECTION (CTT BETWEEN -41°C TO -70°C)
	V INT CONVTN	VERY INTENSE CONVECTION (CTT LESS THAN -70°C)
METEOROLOGICAL SUB-DIVISIONS, STATES & UNION TERRITORIES	ARUPR	ARUNACHAL PRADESH
	BHR	BIHAR
	CHTGH	CHHATTISGARH
	COTL AP	COASTAL ANDHRA PRADESH
	COTL KRNTK	COASTAL KARNATAKA
	COTL ORS	COASTAL ORISSA
	GUJ	GUJARAT
	GWB	GANGETIC WEST BENGAL
	HARY	HARYANA
	DLH	DELHI

	HP	HIMACHAL PRADESH
	J&K	JAMMU AND KASHMIR
	JHRKND	JHARKHAND
	KER	KERALA
	KKN	KONKAN
	LKSDP	LAKSHADWEEP
	M MAHA	MADHYA MAHARASHTRA
	MAHA	MAHARASHTRA
	MANI	MANIPUR
	MEGHA	MEGHALAYA
	MIZO	MIZORAM
	MP	MADHYA PRADESH
	MRTHWD	MARATHWADA
	NAGA	NAGALAND
	N COTL AP	NORTH COASTAL ANDHRA PRADESH
	NIK	NORTH INTERIOR KARNATAKA
	ORS	ORISSA
	PJB	PUNJAB
	RAJ	RAJASTHAN
	RYLSM	RAYALASEEMA
	SAU & KUTCH	SAURASHTRA & KUTCH
	SHWB	SUB-HIMALAYAN WEST BENGAL
	SIK	SOUTH INTERIOR KARNATAKA
	SKM	SIKKIM
	TLNGN	TELANGANA
	TN	TAMIL NADU
	TRP	TRIPURA
	UP	UTTAR PRADESH
	UTRKN	UTTARAKHAND
	VID	VIDHARBHA
	SHWB	SUB HIMALAYAN WEST BENGAL
	GWB	GANGETIC WEST BENGAL
	ARSEA	ARABIAN SEA
	ILS	ISLANDS
MISCELLANEOUS	ASSW	IN ASSOCIATION WITH
	ASSTD	ASSOCIATED
	LLC	LOW LEVEL CIRCULATION
	EMBDD	EMBEDDED
	N/HOOD	NEIGHBOURHOOD
	EXT	EXTREME