

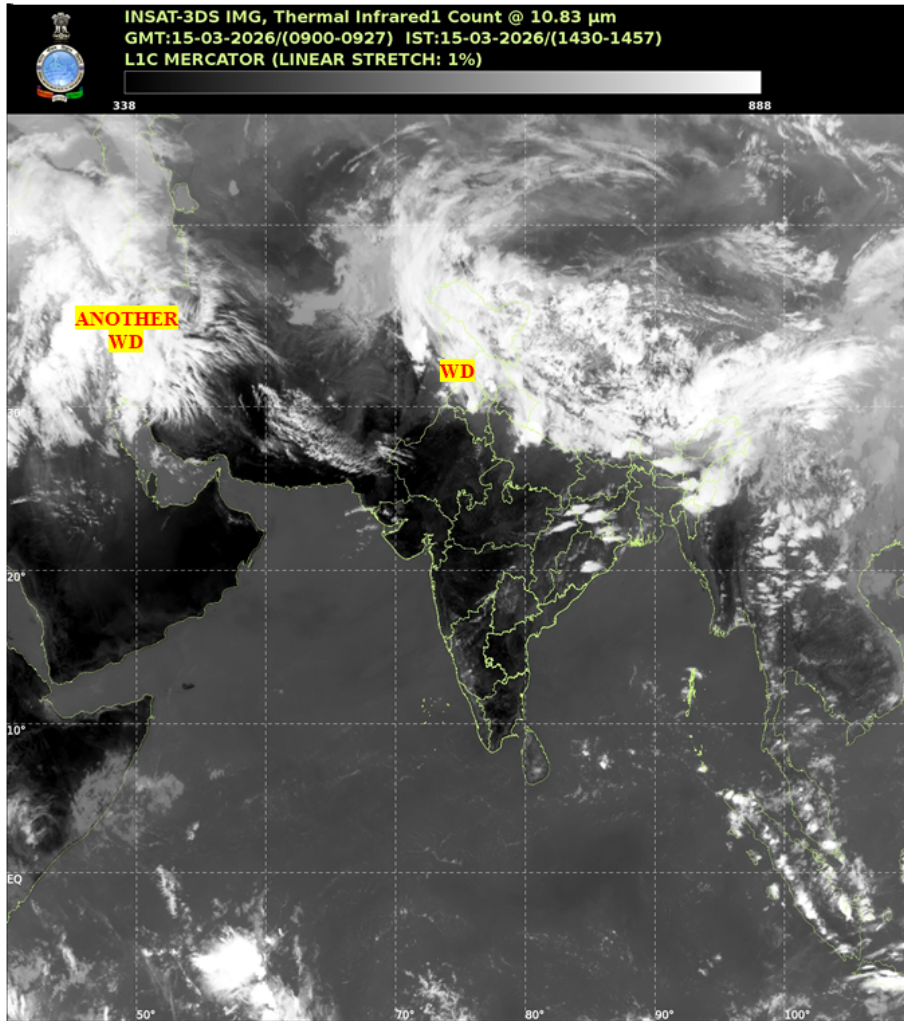


भारत मौसम विज्ञान विभाग  
पृथ्वी विज्ञान मंत्रालय  
India Meteorological Department  
Ministry of Earth Sciences



**SATELLITE BULLETIN BASED ON SATELLITE IMAGERIES AND PRODUCTS**

Date: 2026-03-15 Time: 09:00:00 UTC



TCIN50 DEMS 150900

SATELLITE BULLETIN BASED ON INSAT-3DS PIC OF 150900 UTC (.)

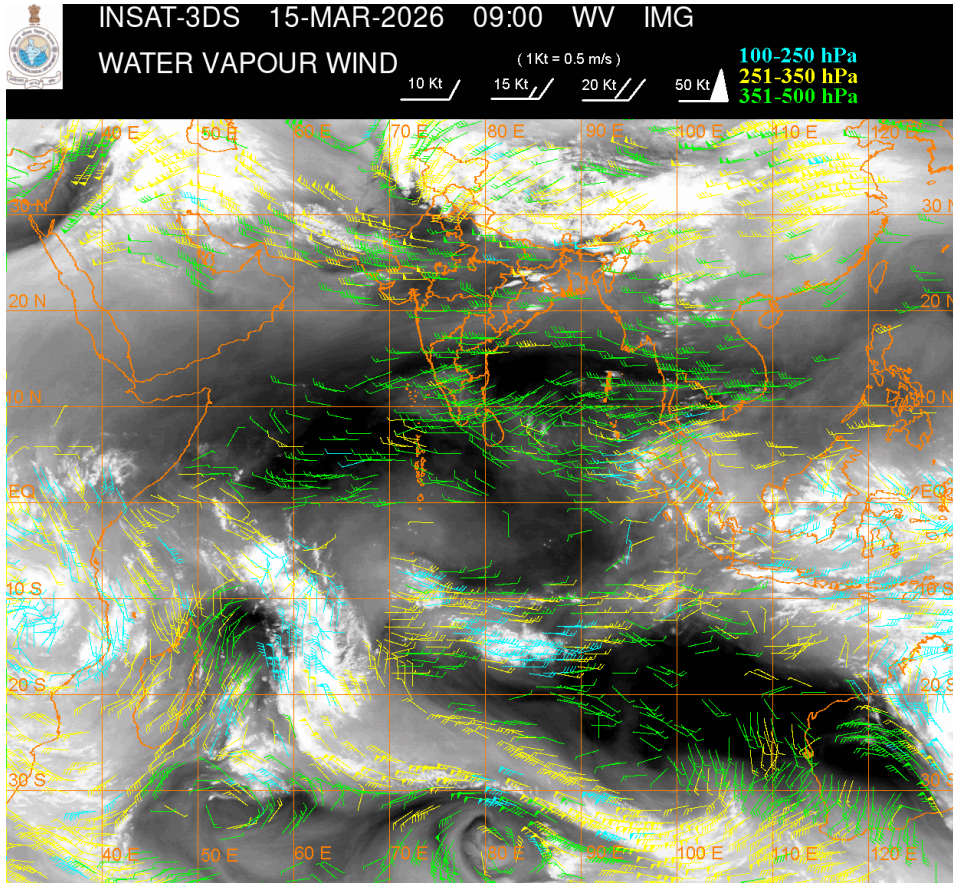
REGION COVERED BETWEEN LAT 50.0°N TO 35.0°S AND LONG 40.0°E TO 125.0°E (.)

**SALIENT FEATURES:**

**WESTERN DISTURBANCE (WD):-**

SCT TO BKN MULTILAYERED CLOUDS OVER NORTH PAK LADAKH J&K HP UTRKND PJB HARY DLH UP NEPAL TIBET ADJ CHINA AND N/HOOD IN ASSW WD OVER THE AREA (.)

SCT TO BKN MULTILAYERED CLOUDS OVER IRAN AND N/HOOD IN ASSW ANOTHER WD OVER THE AREA (.)



**CLOUD DESCRIPTION WITHIN INDIA:**

**NORTH:**

SCT TO BKN LOW/MED CLOUDS WITH EMBDD MOD TO INT CONVTN OVER LADAKH J&K HP UTRKND PJB N HARY N UP (.) SCT LOW/MED CLOUDS WITH EMBDD ISOL WK TO MOD CONVTN OVER S HARY DLH S UP (.)

**EAST:**

SCT TO BKN LOW/MED CLOUDS WITH EMBDD MOD TO INT CONVTN OVER JHRKND N CHTGH N ORS SKM MEGHA ASSAM ARUPR NAGA MANI MIZO S GWB (.) SCT LOW/MED CLOUDS WITH OVER BHR S CHTGH S ORS N GWB SHWB & BD (.)

**WEST:**

SCT LOW/MED CLOUDS WITH EMBDD ISOL WK TO MOD CONVTN OVER EXT N RAJ (.) ISOL TO SCT LOW/MED CLOUDS OVER E MP MAHA GOA (.)

**SOUTH:**

SCT LOW/MED CLOUDS WITH EMBDD ISOL WK TO MOD CONVTN OVER N TLNGN ANDAMAN & NICOBAR ILS AREA (.) SCT LOW/MED CLOUDS OVER KRNTK S TLNGN RYLSM COTL AP KER TN LKSDP ILS AREA (.)

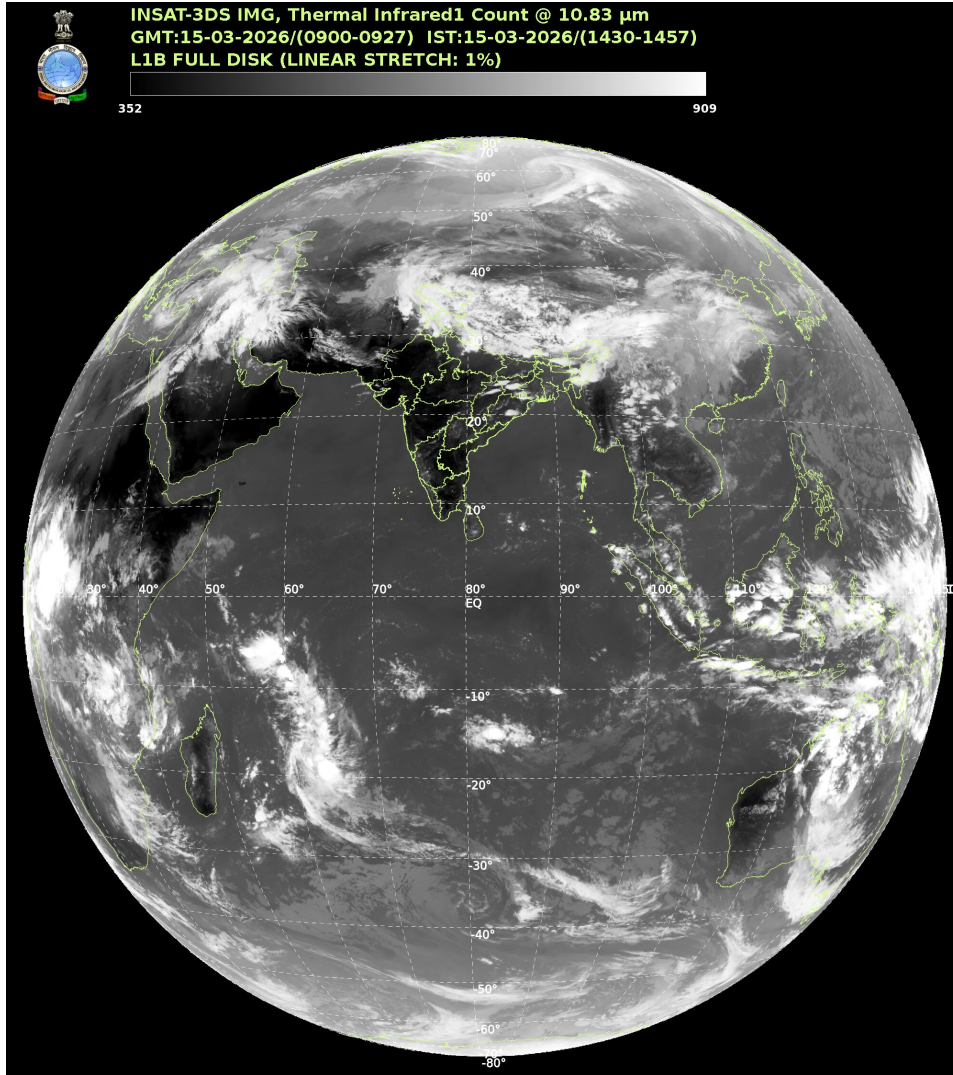
**ARABIAN SEA:**

SCT LOW/MED CLOUDS WITH EMBDD ISOL WK TO MOD CONVTN OVER NE & SOUTH ARSEA (.)

**BAY OF BENGAL & ANDAMAN SEA:**

SCT LOW/MED CLOUDS WITH EMBDD ISOL WK TO MOD CONVTN OVER SOUTH BAY AND ANDAMAN SEA (.)

**CLOUD DESCRIPTION OUTSIDE INDIA:**



SCT LOW/MED CLOUDS WITH EMBDD MOD TO INT CONVTN OVER PAK NEPAL BHUTAN TIBET CHINA YELLOW SEA MYANMAR THAILAND GULF OF THAILAND SUMATRA STR OF MALACCA MALAYSIA BORNEO SOUTH CHINA SEA JAVA ILS & SEA CELEBES ILS & SEA MOZAMBIQUE CHANNEL AND OVER INDIAN OCEAN BET EQ TO LAT 35.0S LONG 40.0E TO 120.0E (.)

T00 15/1530 HRS IST

NNNN

**LEGEND**

REGION	
NORTH	J&K HP UTRKND PJB HARY DLH UP
EAST	BHR JHRKND CHTGH ORS WB SKM NORTH-EAST STATES
WEST	RAJ MP GUJ MAHA GOA
SOUTH	TLNGN AP KRNTK KER TN LKSDP ANDAMAN & NICOBAR ILS
CLOUD DISTRIBUTION	
ISOL	ISOLATED (LESS THAN 25%)
SCT	SCATTERED (25 TO 50%)

<b>BKN</b>	<b>BROKEN (51 TO 75%)</b>
<b>SLD</b>	<b>SOLID (GREATER THAN 75%)</b>
<b>CLOUDS TOP TEMPERATURE</b>	
<b>CTT</b>	<b>CLOUD TOP TEMPERATURE</b>
<b>CONVECTION</b>	
<b>WK CONVTN</b>	<b>WEAK CONVECTION (CTT GREATER THAN -25°C)</b>
<b>MOD CONVTN</b>	<b>MODERATE CONVECTION (CTT BETWEEN -25°C TO -40°C)</b>
<b>INT CONVTN</b>	<b>INTENSE CONVECTION (CTT BETWEEN -41°C TO -70°C)</b>
<b>V INT CONVTN</b>	<b>VERY INTENSE CONVECTION (CTT LESS THAN -70°C)</b>
<b>METEOROLOGICAL SUB-DIVISIONS, STATES &amp; UNION TERRITORIES</b>	
<b>J&amp;K</b>	<b>JAMMU AND KASHMIR</b>
<b>HP</b>	<b>HIMACHAL PRADESH</b>
<b>UTRKND</b>	<b>UTTARAKHAND</b>
<b>PJB</b>	<b>PUNJAB</b>
<b>HARY</b>	<b>HARYANA</b>
<b>DLH</b>	<b>DELHI</b>
<b>BHR</b>	<b>BIHAR</b>
<b>JHRKND</b>	<b>JHARKHAND</b>
<b>CHTGH</b>	<b>CHHATTISGARH</b>
<b>ORS</b>	<b>ORISSA</b>
<b>GWB</b>	<b>GANGETIC WEST BENGAL</b>
<b>SHWB</b>	<b>SUB-HIMALAYAN WEST BENGAL</b>
<b>SKM</b>	<b>SIKKIM</b>
<b>ARUPR</b>	<b>ARUNACHAL PRADESH</b>
<b>ASSAM</b>	<b>ASSAM</b>
<b>MEGHA</b>	<b>MEGHALAYA</b>
<b>MANI</b>	<b>MANIPUR</b>
<b>MIZO</b>	<b>MIZORAM</b>
<b>TRP</b>	<b>TRIPURA</b>
<b>RAJ</b>	<b>RAJASTHAN</b>
<b>MP</b>	<b>MADHYA PRADESH</b>
<b>GUJ</b>	<b>GUJARAT</b>
<b>SAU &amp; KUTCH</b>	<b>SAURASHTRA &amp; KUTCH</b>
<b>MAHA</b>	<b>MAHARASHTRA</b>

<b>M MAHA</b>	<b>MADHYA MAHARASHTRA</b>
<b>MRTHWD</b>	<b>MARATHWADA</b>
<b>VID</b>	<b>VIDARBHA</b>
<b>KKN</b>	<b>KONKAN</b>
<b>TLNGN</b>	<b>TELANGANA</b>
<b>RYLSM</b>	<b>RAYALSEEMA</b>
<b>COTL AP</b>	<b>COASTAL ANDHRA PRADESH</b>
<b>NIK</b>	<b>NORTH INTERIOR KARNATAKA</b>
<b>SIK</b>	<b>SOUTH INTERIOR KARNATAKA</b>
<b>COTL KRNTK</b>	<b>COASTAL KARNATAKA</b>
<b>KER</b>	<b>KERALA</b>
<b>TN</b>	<b>TAMILNADU</b>
<b>LKSDP</b>	<b>LAKSHADWEEP</b>
<b>ILS</b>	<b>ISLANDS</b>
<b>ARSEA</b>	<b>ARABIAN SEA</b>
<b>MISCELLANEOUS</b>	
<b>ASSW</b>	<b>IN ASSOCIATION WITH</b>
<b>ASSTD</b>	<b>ASSOCIATED</b>
<b>LLC</b>	<b>LOW LEVEL CIRCULATION</b>
<b>EMBDD</b>	<b>EMBEDDED</b>
<b>N/HOOD</b>	<b>NEIGHBOURHOOD</b>
<b>EXT</b>	<b>EXTREME</b>