

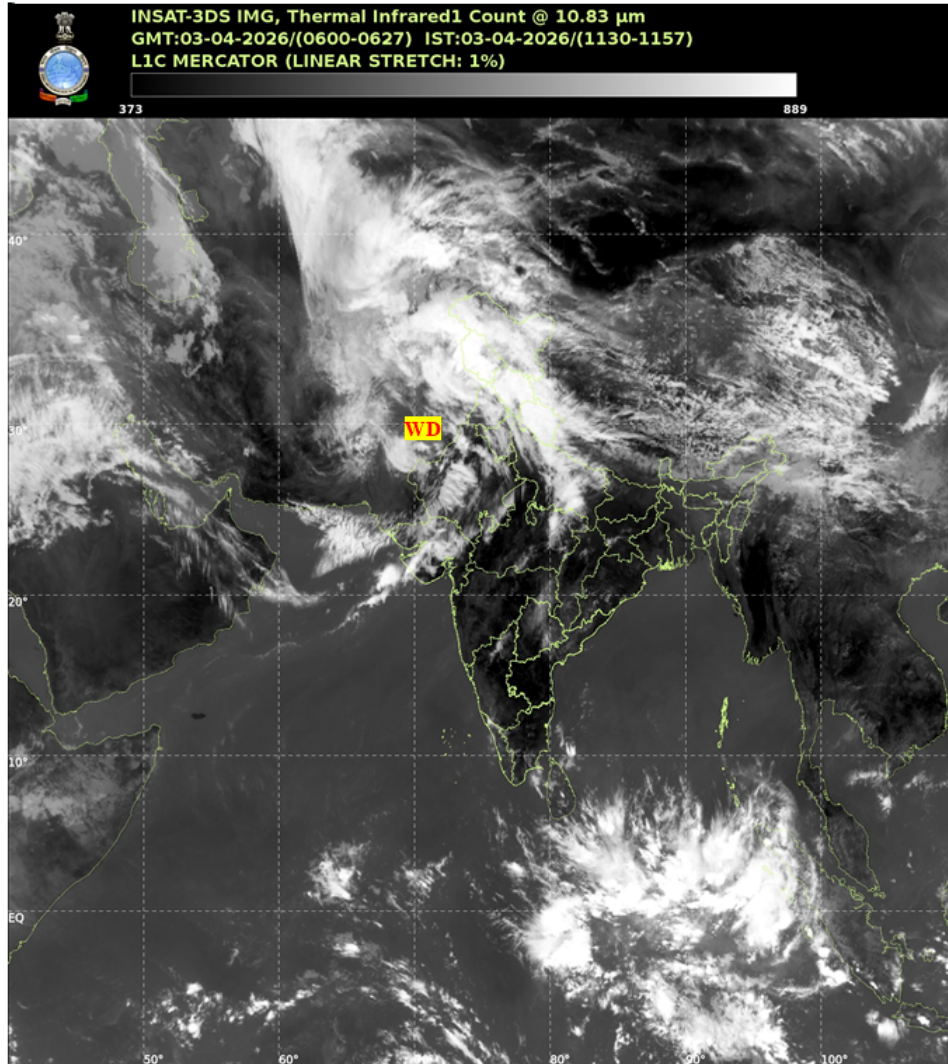


भारत मौसम विज्ञान विभाग  
पृथ्वी विज्ञान मंत्रालय  
India Meteorological Department  
Ministry of Earth Sciences



**SATELLITE BULLETIN BASED ON SATELLITE IMAGERIES AND PRODUCTS**

Date: 2026-04-03 Time: 06:00:00 UTC



TCIN50 DEMS 030600

SATELLITE BULLETIN BASED ON INSAT-3DS PIC OF 030600 UTC (.)

REGION COVERED BETWEEN LAT 50.0°N TO 35.0°S AND LONG 40.0°E TO 125.0°E (.)

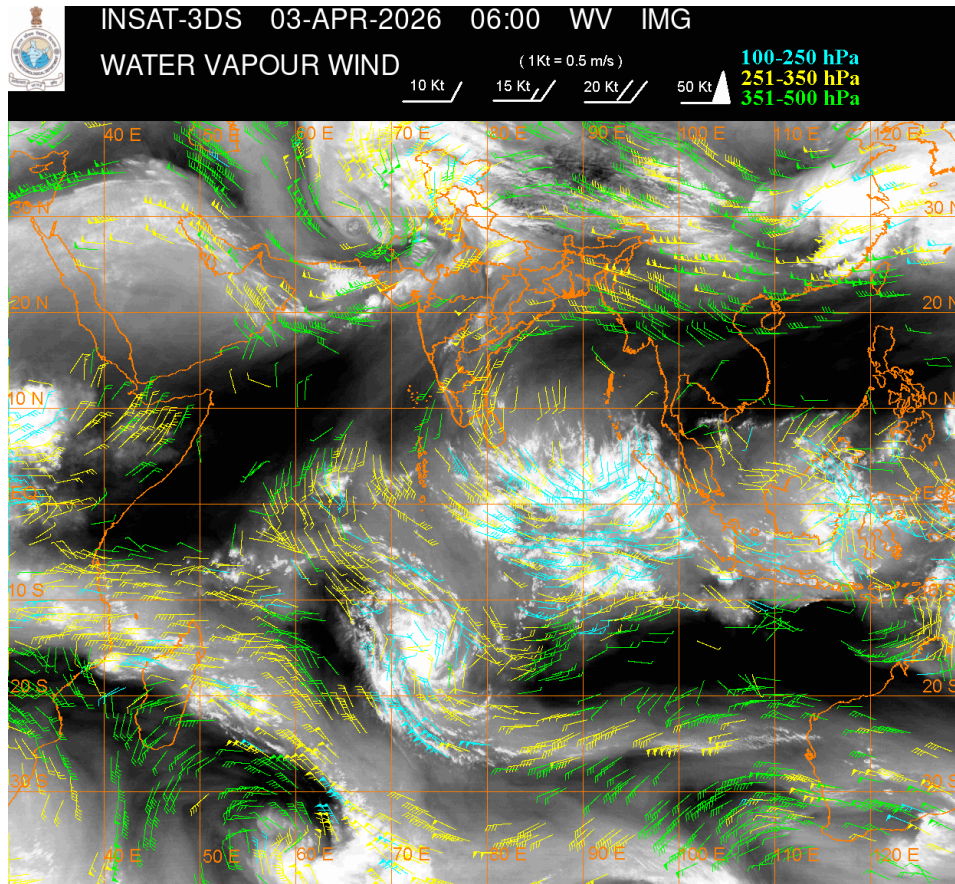
**SALIENT FEATURES:**

**WESTERN DISTURBANCE (WD):-**

SCT TO BKN MULTILAYERED CLOUDS OVER AFGAN PAK LADAKH J&K HP UTRKND PJB HARY DLH UP RAJ MP GUJ AND N/HOOD IN ASSW WD OVER THE AREA (.)

**CONVECTIVE / THUNDERSTORM ACTIVITY:-**

MODERATE TO INTENSE CONVECTIVE / THUNDERSTORM ACTIVITY OBSERVED OVER LADAKH J&K



**CLOUD DESCRIPTION WITHIN INDIA:**

**NORTH:**

SCT TO BKN LOW/MED CLOUDS WITH EMBDD MOD TO INT CONVTN OVER LADAKH J&K HP UTRKND PJB HARY UP AND WK TO MOD CONVTN OVER DLH (.)

**EAST:**

SCT LOW/MED CLOUDS WITH EMBDD MOD TO INT CONVTN OVER ARUPR AND ISOL WK TO MOD CONVTN OVER CHTGH N ORS JHRKND NW BHR SKM ASSAM NAGA MANI (.) SCT LOW/MED CLOUDS OVER N ORS SHWB REST NE STATES (.)

**WEST:**

SCT TO BKN LOW/MED CLOUDS WITH EMBDD MOD TO INT CONVTN OVER RAJ GUJ E MP AND ISOL WK TO MOD CONVTN OVER NW & SE MP E VID (.) ISOL TO SCT LOW/MED CLOUDS OVER REST MP MAHA (.)

**SOUTH:**

SCT LOW/MED CLOUDS WITH EMBDD ISOL WK TO MOD CONVTN OVER KRNTK NORTH COTL AP KER S TN & NICOBAR ILS (.) SCT LOW/MED CLOUDS OVER N TN LKSDP ILS & ANDAMAN ILS (.)

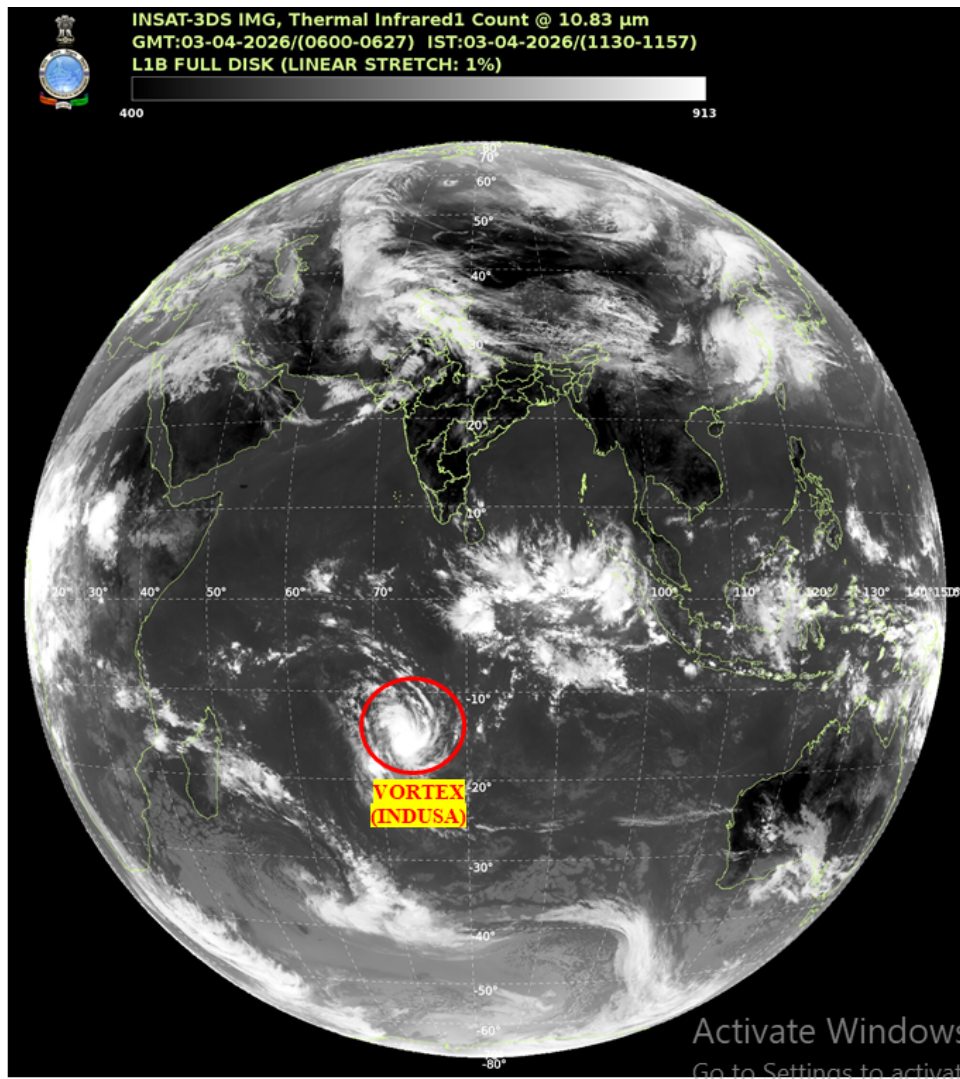
**ARABIAN SEA:**

SCT TO BKN LOW/MED CLOUDS WITH EMBDD MOD TO INT CONVTN OVER NORTH ADJ CENTRAL ARSEA GULLF OF KUTCH (.)

**BAY OF BENGAL & ANDAMAN SEA:**

SCT TO BKN LOW/MED CLOUDS WITH EMBDD INT TO V INT CONVTN OVER SOUTH BAY ADJ EQUATORIAL INDIAN OCEAN & SOUTH ANDAMAN SEA (.)

**CLOUD DESCRIPTION OUTSIDE INDIA:**



**VORTEX OVER SOUTH INDIAN OCEAN :-**

VORTEX OVER SOUTH INDIAN OCEAN (AREA E80 ) CENTERED NEAR 15.2S / 72.8E (.) INTENSITY T3.5 / 3.5 (.) MAXIMUM SUSTAINED WINDS 48-63 KTS (.) ASSOCIATED SCT TO BKN LOW/MED CLOUDS WITH EMBDD INT TO V INT CONVTN OVER AREA BET LAT 10.0S TO 20.0S LONG 68.0E TO 78.0E (.)

SCT LOW/MED CLOUDS WITH EMBDD MOD TO INT CONVTN OVER SRI LANKA GULF OF MANNAR MALDIVES AREA PAK WEST NEPAL TIBET CHINA YELLOW SEA EAST CHINA SEA NORTH MYANMAR SUMATRA STR OF MALACCA MALAYSIA BORNEO SOUTH CHINA SEA JAVA ILS & SEA CELEBES & SEA ILS NORTH MADAGASCAR MOZAMBIQUE CHANNEL AND OVER INDIAN OCEAN BET LAT 5.0N TO 10.0S LONG 50.0E TO 110.0E AND BET LAT 10.0S TO LAT 35.0S LONG 50.0E TO 80.0E (.)

T00 03/1240 HRS IST

NNNN

**LEGEND**

REGION	
NORTH	J&K HP UTRKND PJB HARY DLH UP
EAST	BHR JHRKND CHTGH ORS WB SKM NORTH-EAST STATES

<b>WEST</b>	<b>RAJ MP GUJ MAHA GOA</b>
<b>SOUTH</b>	<b>TLNGN AP KRNTK KER TN LKSDP ANDAMAN &amp; NICOBAR ILS</b>
<b>CLOUD DISTRIBUTION</b>	
<b>ISOL</b>	<b>ISOLATED (LESS THAN 25%)</b>
<b>SCT</b>	<b>SCATTERED (25 TO 50%)</b>
<b>BKN</b>	<b>BROKEN (51 TO 75%)</b>
<b>SLD</b>	<b>SOLID (GREATER THAN 75%)</b>
<b>CLOUDS TOP TEMPERATURE</b>	
<b>CTT</b>	<b>CLOUD TOP TEMPERATURE</b>
<b>CONVECTION</b>	
<b>WK CONVTN</b>	<b>WEAK CONVECTION (CTT GREATER THAN -25°C)</b>
<b>MOD CONVTN</b>	<b>MODERATE CONVECTION (CTT BETWEEN -25°C TO -40°C)</b>
<b>INT CONVTN</b>	<b>INTENSE CONVECTION (CTT BETWEEN -41°C TO -70°C)</b>
<b>V INT CONVTN</b>	<b>VERY INTENSE CONVECTION (CTT LESS THAN -70°C)</b>
<b>METEOROLOGICAL SUB-DIVISIONS, STATES &amp; UNION TERRITORIES</b>	
<b>J&amp;K</b>	<b>JAMMU AND KASHMIR</b>
<b>HP</b>	<b>HIMACHAL PRADESH</b>
<b>UTRKND</b>	<b>UTTARAKHAND</b>
<b>PJB</b>	<b>PUNJAB</b>
<b>HARY</b>	<b>HARYANA</b>
<b>DLH</b>	<b>DELHI</b>
<b>BHR</b>	<b>BIHAR</b>
<b>JHRKND</b>	<b>JHARKHAND</b>
<b>CHTGH</b>	<b>CHHATTISGARH</b>
<b>ORS</b>	<b>ORISSA</b>
<b>GWB</b>	<b>GANGETIC WEST BENGAL</b>
<b>SHWB</b>	<b>SUB-HIMALAYAN WEST BENGAL</b>
<b>SKM</b>	<b>SIKKIM</b>
<b>ARUPR</b>	<b>ARUNACHAL PRADESH</b>
<b>ASSAM</b>	<b>ASSAM</b>
<b>MEGHA</b>	<b>MEGHALAYA</b>
<b>MANI</b>	<b>MANIPUR</b>
<b>MIZO</b>	<b>MIZORAM</b>
<b>TRP</b>	<b>TRIPURA</b>

<b>RAJ</b>	<b>RAJASTHAN</b>
<b>MP</b>	<b>MADHYA PRADESH</b>
<b>GUJ</b>	<b>GUJARAT</b>
<b>SAU &amp; KUTCH</b>	<b>SAURASHTRA &amp; KUTCH</b>
<b>MAHA</b>	<b>MAHARASHTRA</b>
<b>M MAHA</b>	<b>MADHYA MAHARASHTRA</b>
<b>MRTHWD</b>	<b>MARATHWADA</b>
<b>VID</b>	<b>VIDARBHA</b>
<b>KKN</b>	<b>KONKAN</b>
<b>TLNGN</b>	<b>TELANGANA</b>
<b>RYLSM</b>	<b>RAYALSEEMA</b>
<b>COTL AP</b>	<b>COASTAL ANDHRA PRADESH</b>
<b>NIK</b>	<b>NORTH INTERIOR KARNATAKA</b>
<b>SIK</b>	<b>SOUTH INTERIOR KARNATAKA</b>
<b>COTL KRNTK</b>	<b>COASTAL KARNATAKA</b>
<b>KER</b>	<b>KERALA</b>
<b>TN</b>	<b>TAMILNADU</b>
<b>LKSDP</b>	<b>LAKSHADWEEP</b>
<b>ILS</b>	<b>ISLANDS</b>
<b>ARSEA</b>	<b>ARABIAN SEA</b>
<b>MISCELLANEOUS</b>	
<b>ASSW</b>	<b>IN ASSOCIATION WITH</b>
<b>ASSTD</b>	<b>ASSOCIATED</b>
<b>LLC</b>	<b>LOW LEVEL CIRCULATION</b>
<b>EMBDD</b>	<b>EMBEDDED</b>
<b>N/HOOD</b>	<b>NEIGHBOURHOOD</b>
<b>EXT</b>	<b>EXTREME</b>