

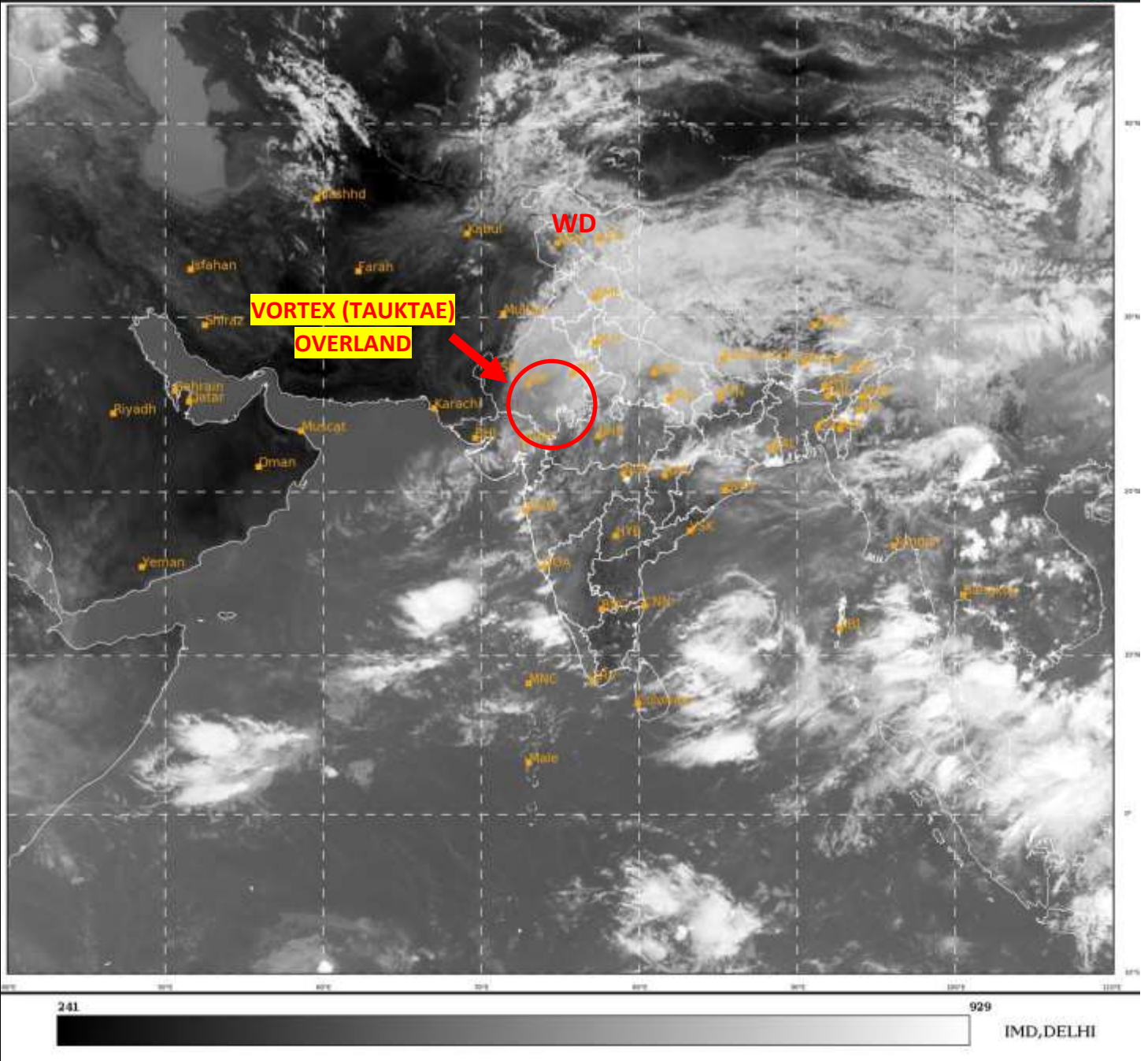


**SATELLITE BULLETIN BASED ON SATELLITE IMAGERIES  
AND PRODUCTS**

**19.05.2021 TIME 0600 UTC**

SAT : INSAT-3D IMG  
IMG\_TIR1 10.8 um  
LIC Mercator

19-05-2021/(0600 to 0626) GMT  
19-05-2021/(1130 to 1156) IST



TCIN50 DEMS 190600

SATELLITE BULLETIN BASED ON INSAT-3D PIC OF 190600 UTC (.)

REGION COVERED BETWEEN LAT 50.0°N TO 30.0°S AND LONG 40.0°E TO 125.0°E (.)

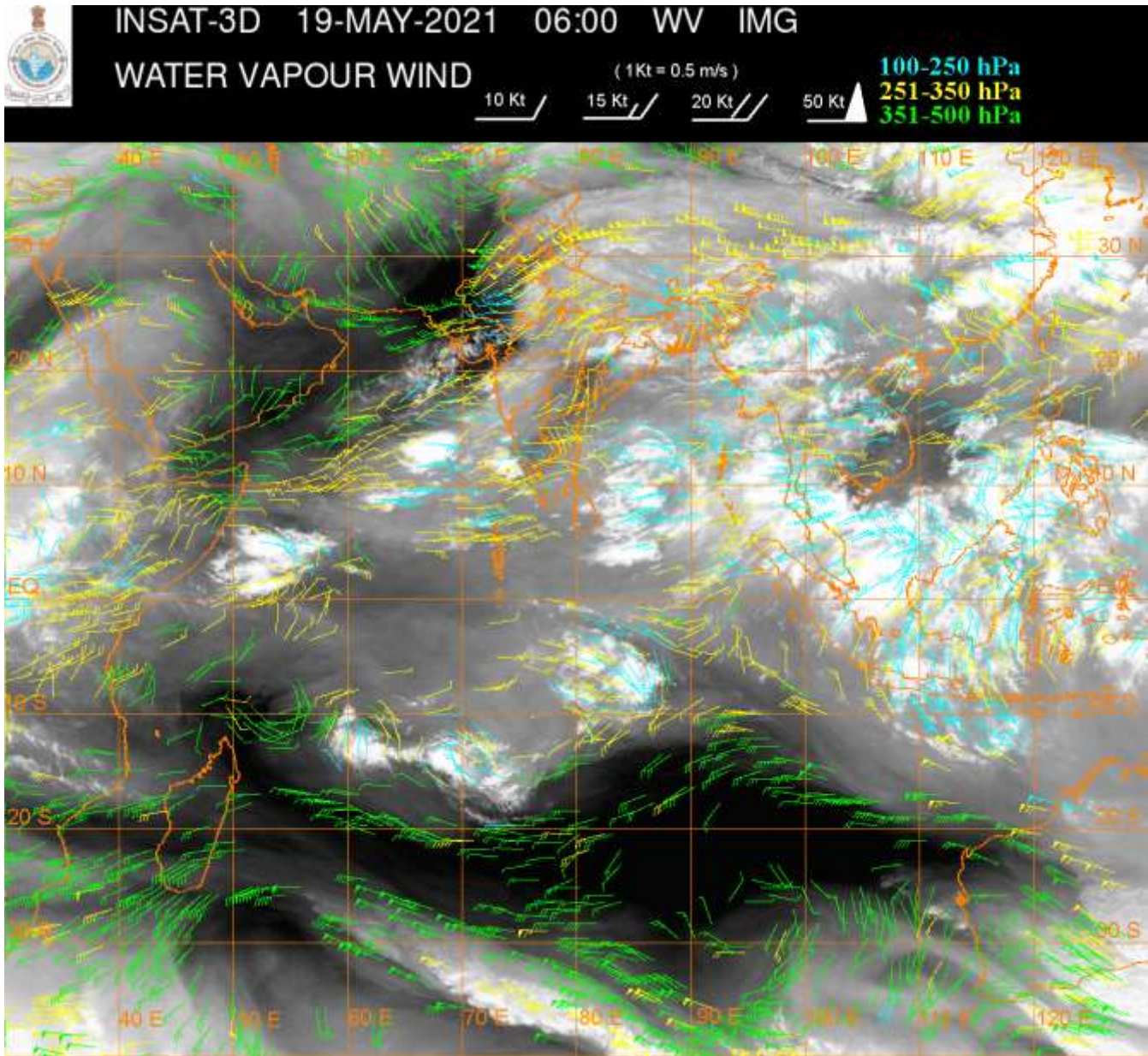
**SALIENT FEATURES:-**

**VORTEX (TAUKTAE) OVER SE RAJASTHAN & N/HOOD:-**

VORTEX (**TAUKTAE**) OVER SE RAJASTHAN & N/HOOD HAS WEAKENED AND CENTERED OVER THE LAND (.) CENTRE IS NOT DEFINED IN THE SATELLITE (INSAT-3D/3R) OBSERVATION AT 0600 UTC (.) ASSTD BKN LOW/MED CLOUDS WITH EMBDD WK TO MOD CONVTN OVER GUJ RAJ MP & N/HOOD (.)

**WESTERN DISTURBANCE (WD):-**

**SCT MULTILAYERED CLOUDS OVER EXT N PAK J&K LADAKH HP PJB HARY DLH UP UTRKND NEPAL TIBET & N/HOOD IN ASSW **WD** OVER THE AREA (.)**



**CLOUDS DESCRIPTION WITHIN INDIA:-**

**NORTH:-**

**SCT LOW/MED CLOUDS WITH EMBDD WK TO MOD CONVTN OVER LADAKH EXT S J&K HP UTRKND PJB HARY DLH UP (.)**

**EAST:-**

**SCT LOW/MED CLOUDS WITH EMBDD ISOL MOD TO INT CONVTN OVER NC CHTGH EXT SE ASSAM ADJ N MIZO & SC MANI (.) (.) SCT LOW/MED CLOUDS WITH EMBDD WK TO MOD CONVTN OVER W BHR S JHRKND REST N CHTGH N ORS N SHWB SKM ARUPR N ASSAM NAGA N MANI (.)SCT LOW/MED CLOUDS OVER S ORS N JHRKND REST NE STATES (.)**

**WEST:-**

**SCT LOW/MED CLOUDS WITH EMBDD ISOL MOD TO INT CONVTN OVER C VID (.)SCT LOW/MED CLOUDS WITH EMBDD WK TO MOD CONVTN OVER NE& SW GUJ RAJ N MP & M MAHA KKN & GOA(.)SCT LOW/MED CLOUDS OVER REST MAHA S MP (.)**

**SOUTH:-**

**SCT LOW/MED CLOUDS WITH EMBDD ISOL MOD TO INT CONVTN OVER C COTL KRNTK (.) SCT LOW/MED CLOUDS WITH EMBDD WK TO MOD CONVTN OVER LKSDP & NICOBAR ILS (.) SCT LOW/MED CLOUDS OVER TLNGN S AP KER TN & ANDAMAN ILS (.)**

**ARABIAN SEA:-**

SCT LOW/MED CLOUDS WITH EMBDD INT TO V INT CONVTN OVER EC ADJ SE ARSEA BET LAT 11.0N TO 14.5N LONG 64.5E TO 70.0E AND ALSO OVER SE ARSEA OFF KER COAST(.) SCT LOW/MED CLOUDS WITH EMBDD WK TO MOD CONVTN OVER REST E ARSEA (.)

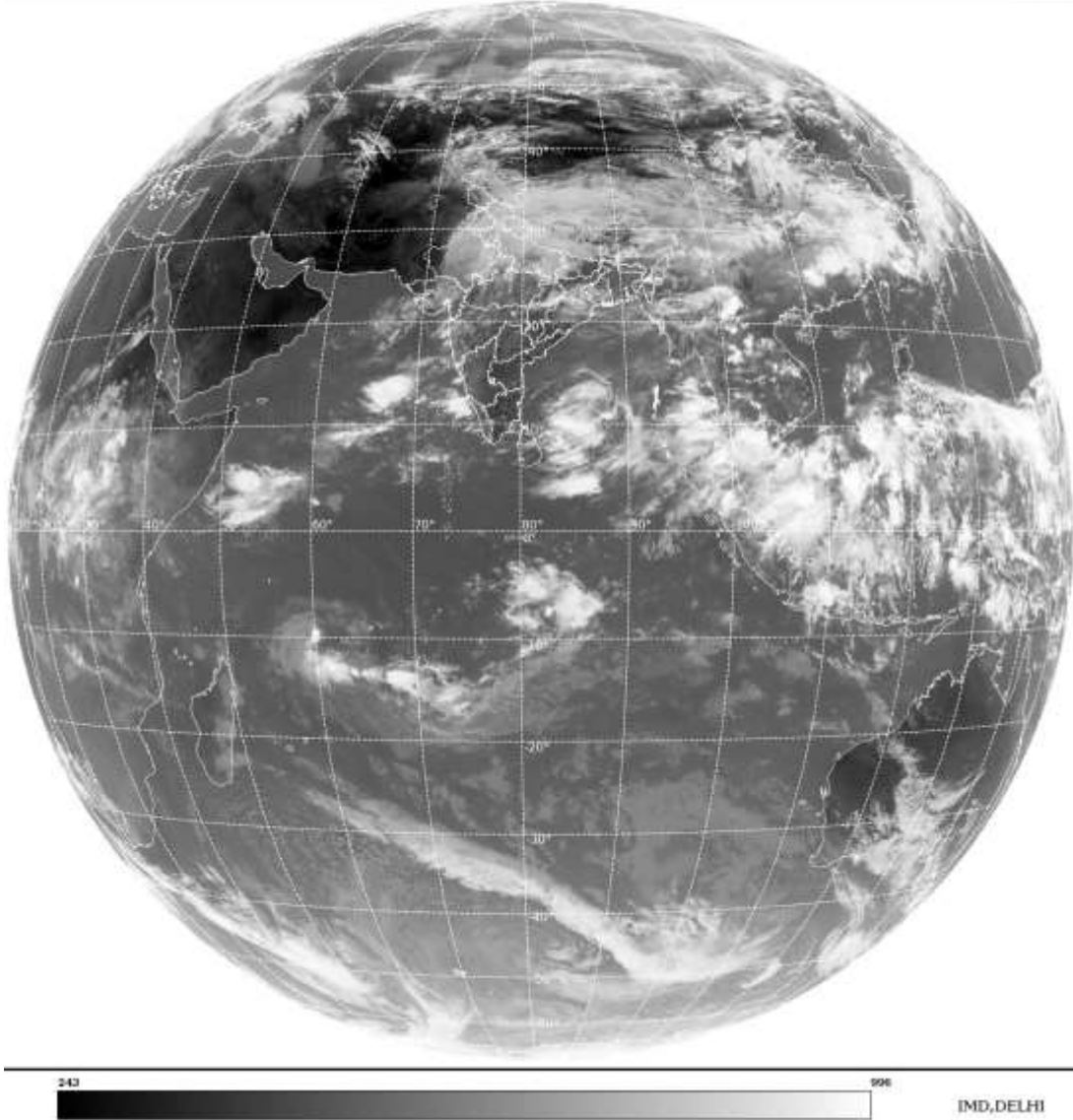
**BAY OF BENGAL & ANDAMAN SEA:-**

SCT LOW/MED CLOUDS WITH EMBDD INT TO V INT CONVTN OVER S BAY TENASSERIM COAST (.) SCT LOW/MED CLOUDS WITH EMBDD WK TO MOD CONVTN OVER NC BAY & S ANDAMAN SEA (.)

**CLOUDS DESCRIPTION OUTSIDE INDIA:-**

SAT : INSAT-3D IMG  
Thermal Infrared1 Count 10.8 um  
LIB FULL DISK

19-05-2021/(0600 to 0628) GMT  
19-05-2021/(1130 to 1156) IST



SCT LOW/MED CLOUDS WITH EMBDD MOD TO INT CONVTN OVER NEPAL BHUTAN TIBET CHINA E CHINA SEA MYANMAR THAILAND GULF OF THAILAND CAMBODIA LAOS N VIETNAM GULF OF TONKIN SUMATRA ADJ W COAST STR OF MALACCA MALAY PENINSULA BORNEO S CHINA SEA JAVA ILS & SEA CELEBES ILS & SEA PHILIPPINES SULU SEA AND OVER INDIAN OCEAN BET EQT TO LAT 5.0N LONG 48.0E TO 96.0E AND BET LAT 02.0S TO 17.5S LONG 59.0E TO 88.0E (.)

TOO 19/1245EF=

NNNN

**LEGEND:-**

<b>REGION</b>	<b>NORTH</b>	<b>J&amp;K HP PJB HARY DLH UP UTRKND</b>
	<b>EAST</b>	<b>BHR JHRKND CHTGH ORS WB SKMNORTH-EAST STATES</b>
	<b>WEST</b>	<b>RAJ MP GUJ MAHA GOA</b>
	<b>SOUTH</b>	<b>TLNGN AP KRNTK KER TN LKSDP ANDAMAN &amp; NICOBAR ILS</b>

<b>CLOUD DISTRIBUTION</b>	<b>ISOL</b>	<b>ISOLATED (LESS THAN 25%)</b>
	<b>SCT</b>	<b>SCATTERED (25 TO 50%)</b>
	<b>BKN</b>	<b>BROKEN (51 TO 75%)</b>
	<b>SLD</b>	<b>SOLID (GREATER THAN 75%)</b>
<b>CLOUDS TOP TEMPERATURE</b>	<b>CTT</b>	<b>CLOUD TOP TEMPERATURE</b>
<b>CONVECTION</b>	<b>WK CONVTN</b>	<b>WEAK CONVECTION (CTT GREATER THAN -25°C)</b>
	<b>MOD CONVTN</b>	<b>MODERATE CONVECTION (CTT BETWEEN -25°C TO -40°C)</b>
	<b>INT CONVTN</b>	<b>INTENSE CONVECTION (CTT BETWEEN -41°C TO -70°C)</b>
	<b>V INT CONVTN</b>	<b>VERY INTENSE CONVECTION (CTT LESS THAN -70°C)</b>
<b>METEOROLOGICAL SUB-DIVISIONS, STATES &amp; UNION TERRITORIES</b>	<b>ARUPR</b>	<b>ARUNACHAL PRADESH</b>
	<b>BHR</b>	<b>BIHAR</b>
	<b>CHTGH</b>	<b>CHHATTISGARH</b>
	<b>COTL AP</b>	<b>COASTAL ANDHRA PRADESH</b>
	<b>COTL KRNTK</b>	<b>COASTAL KARNATAKA</b>
	<b>COTL ORS</b>	<b>COASTAL ORISSA</b>
	<b>GUJ</b>	<b>GUJARAT</b>
	<b>GWB</b>	<b>GANGETIC WEST BENGAL</b>
	<b>HARY</b>	<b>HARYANA</b>
	<b>DLH</b>	<b>DELHI</b>
	<b>HP</b>	<b>HIMACHAL PRADESH</b>
	<b>J&amp;K</b>	<b>JAMMU AND KASHMIR</b>
	<b>JHRKND</b>	<b>JHARKHAND</b>
	<b>KER</b>	<b>KERALA</b>
	<b>KKN</b>	<b>KONKAN</b>
	<b>LKSDP</b>	<b>LAKSHADWEEP</b>
	<b>M MAHA</b>	<b>MADHYA MAHARASHTRA</b>
	<b>MAHA</b>	<b>MAHARASHTRA</b>
	<b>MANI</b>	<b>MANIPUR</b>
	<b>MEGHA</b>	<b>MEGHALAYA</b>
<b>MIZO</b>	<b>MIZORAM</b>	

	<b>MP</b>	<b>MADHYA PRADESH</b>
	<b>MRTHWD</b>	<b>MARATHWADA</b>
	<b>NAGA</b>	<b>NAGALAND</b>
	<b>N COTL AP</b>	<b>NORTH COASTAL ANDHRA PRADESH</b>
	<b>NIK</b>	<b>NORTH INTERIOR KARNATAKA</b>
	<b>ORS</b>	<b>ORISSA</b>
	<b>PJB</b>	<b>PUNJAB</b>
	<b>RAJ</b>	<b>RAJASTHAN</b>
	<b>RYLSM</b>	<b>RAYALASEEMA</b>
	<b>SAU &amp; KUTCH</b>	<b>SAURASHTRA &amp; KUTCH</b>
	<b>SHWB</b>	<b>SUB-HIMALAYAN WEST BENGAL</b>
	<b>SIK</b>	<b>SOUTH INTERIOR KARNATAKA</b>
	<b>SKM</b>	<b>SIKKIM</b>
	<b>TLNGN</b>	<b>TELANGANA</b>
	<b>TN</b>	<b>TAMIL NADU</b>
	<b>TRP</b>	<b>TRIPURA</b>
	<b>UP</b>	<b>UTTAR PRADESH</b>
	<b>UTRKN D</b>	<b>UTTARAKHAND</b>
	<b>VID</b>	<b>VIDHARBHA</b>
	<b>SHWB</b>	<b>SUB HIMALAYAN WEST BENGAL</b>
	<b>GWB</b>	<b>GANGETIC WEST BENGAL</b>
	<b>ARSEA</b>	<b>ARABIAN SEA</b>
	<b>ILS</b>	<b>ISLANDS</b>
<b>MISCELLANEOUS</b>	<b>ASSW</b>	<b>IN ASSOCIATION WITH</b>
	<b>ASSTD</b>	<b>ASSOCIATED</b>
	<b>LLC</b>	<b>LOW LEVEL CIRCULATION</b>
	<b>EMBDD</b>	<b>EMBEDDED</b>
	<b>N/HOOD</b>	<b>NEIGHBOURHOOD</b>
	<b>EXT</b>	<b>EXTREME</b>