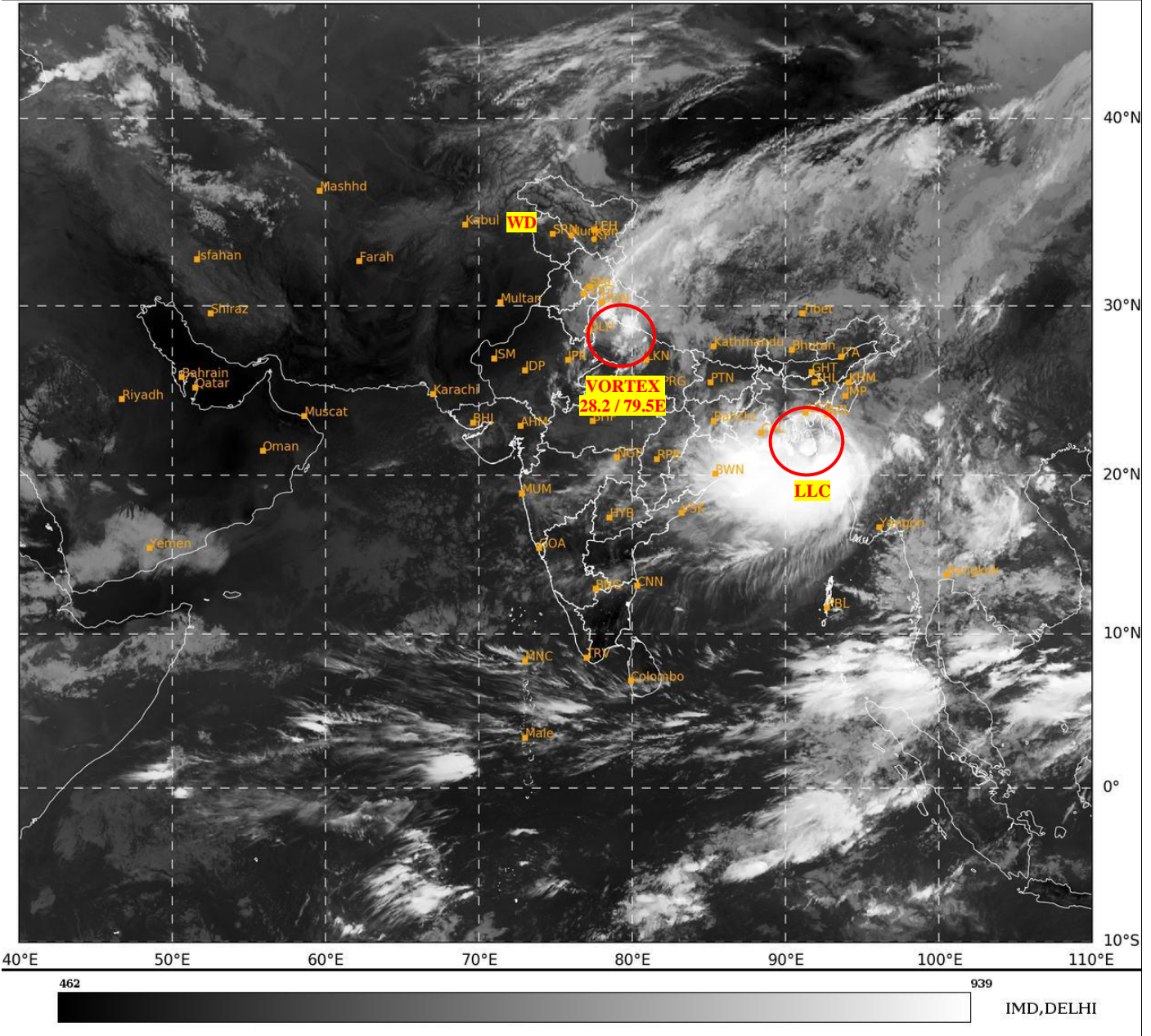




**SATELLITE BULLETIN BASED ON SATELLITE
IMAGERIES AND PRODUCTS**
13.09.2024 TIME 0300 UTC

SAT : INSAT-3DR IMG
IMG_TIR1 10.8 um
LIC Mercator

13-09-2024/(0315 to 0342) GMT
13-09-2024/(0845 to 0912) IST



TCIN50 DEMS 130300

SATELLITE BULLETIN BASED ON INSAT-3DR PIC OF 130315 UTC (.)

REGION COVERED BETWEEN LAT 50.0°N TO 35.0°S AND LONG 40.0°E TO 125.0°E (.)

SALIENT FEATURES:-

VORTEX OVER NORTH WEST UTTAR PRADESH AND N/HOOD:-

VORTEX OVER NW UP & N/HOOD CENTERED WITHIN HALF A DEGREE OF **28.2N / 79.5E** (.) CENTER POORLY DEFINED IN SATELLITE IMAGERY (.) ASSTD SCT TO BKN LOW/MED CLOUDS WITH EMBDD INT TO V INT CONVTN OVER UTRKND NW UP (MINIMUM **CTT MINUS 80 DEG CEL**) MOD TO INT CONVTN OVER E HP REST UP E RAJ NW MP (MINIMUM **CTT MINUS 55-65 DEG CEL**) AND ISOL WK TO MOD CONVTN OVER E LADAKH W HP PJB HARY DLH (.)

LLC OVER SOUTH EAST BANGLADESH ADJ NORTH EAST BAY & N/HOOD:-

LOW LEVEL CIRCULATION (**LLC**) OVER SE BANGLADESH ADJ NE BAY & N/HOOD (.) ASSTD SCT TO BKN LOW/MED CLOUDS WITH EMBDD INT TO V INT CONVTN OVER E ORS S GWB S BD NORTH ADJ CENTRAL BAY ARAKAN COAST W MYANMAR (MINIMUM **CTT MINUS 80-93 DEG CEL**) AND MOD TO INT CONVTN OVER MIZO TRP N GWB (MINIMUM **CTT MINUS 60-70 DEG CEL**) (.)

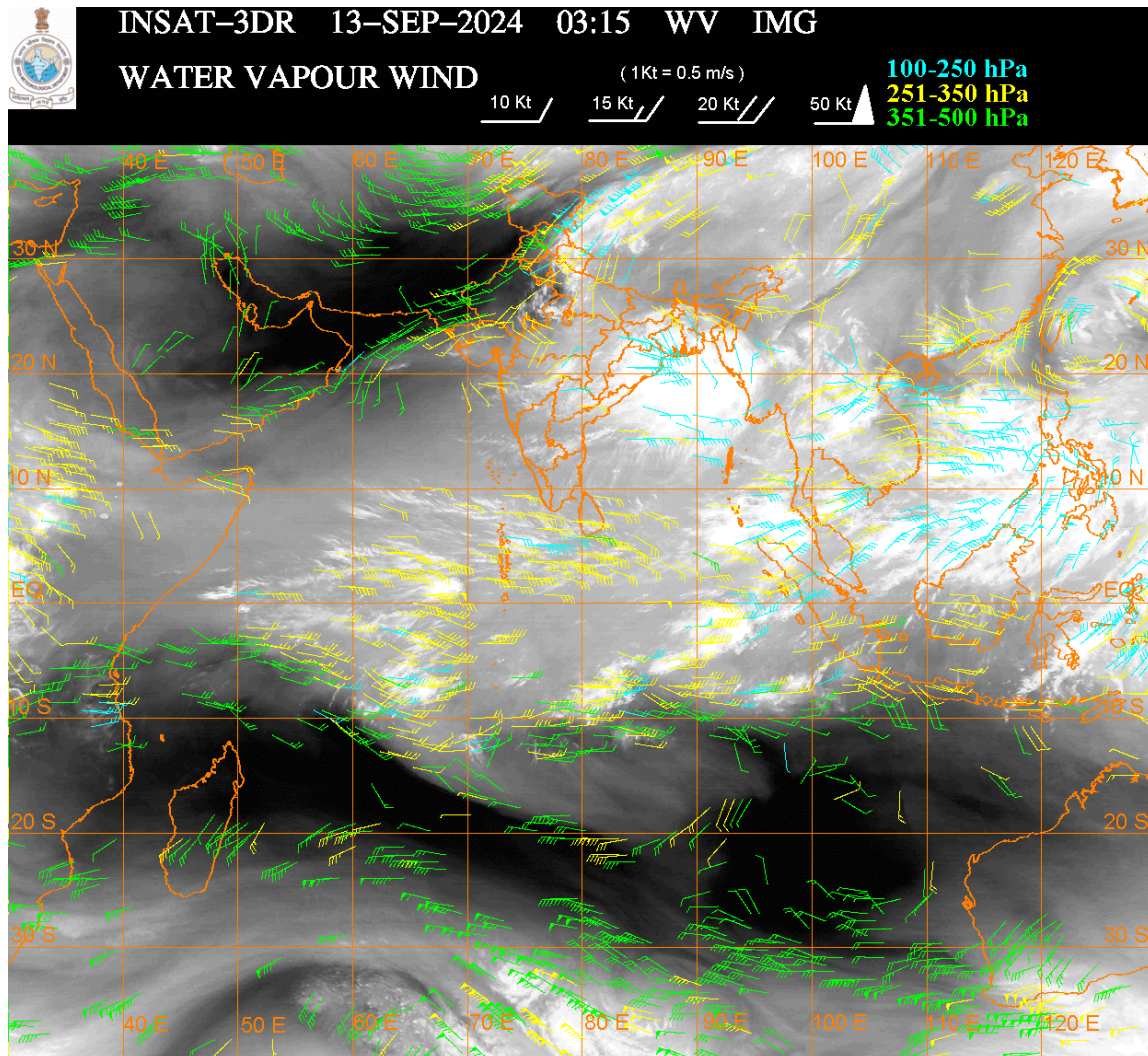
WESTERN DISTURBANCE (WD):-

SCT MULTILAYERED CLOUDS OVER N PAK J&K ADJ LADAKH & N/HOOD IN ASSW **WD** OVER THE AREA (.)

CONVECTIVE / THUNDERSTORM ACTIVITY:-

INTENSE TO VERY INTENSE CONVECTIVE / THUNDERSTORM ACTIVITY OBSERVED OVER UTRKND NW UP E ORS S GWB S BD NICOBAR ILS (MINIMUM **CTT MINUS 75-93** DEG CEL) (.)

MODERATE TO INTENSE CONVECTIVE / THUNDERSTORM ACTIVITY OBSERVED OVERS E HP REST UP JHRKND W ORS N GWB MIZO TRP E RAJ NW MP (MINIMUM **CTT MINUS 50-70** DEG CEL) (.)



CLOUDS DESCRIPTION WITHIN INDIA:-

NORTH:-

SCT TO BKN LOW/MED CLOUDS WITH EMBDD INT TO V INT CONVTN OVER UTRKND NW UP (.) SCT LOW/MED CLOUDS WITH EMBDD MOD TO INT CONVTN OVER E HP REST UP AND ISOL WK TO MOD CONVTN OVER LADAKH J&K W HP PJB HARY DLH (.)

EAST:-

SCT TO BKN LOW/MED CLOUDS WITH EMBDD INT TO V INT CONVTN OVER E ORS S GWB & S BD (.) SCT LOW/MED CLOUDS WITH EMBDD MOD TO INT CONVTN OVER JHRKND W ORS N GWB MIZO TRP AND ISOL WK TO MOD CONVTN OVER BHR CHTGH SHWB SKM REST NE STATES & N BD (.)

WEST:-

SCT LOW/MED CLOUDS WITH EMBDD MOD TO INT CONVTN OVER E RAJ NW MP (.) SCT LOW/MED CLOUDS WITH EMBDD ISOL WK TO MOD CONVTN OVER REST MP MAHA (.) SCT LOW/MED CLOUDS OVER SW RAJ GUJ GOA (.)

SOUTH:-

SCT LOW/MED CLOUDS WITH EMBDD INT TO V INT CONVTN OVER NICOBAR ILS (.) SCT LOW/MED CLOUDS WITH EMBDD ISOL WK TO MOD CONVTN OVER KRNTK TLNGN RYLSM COTL AP KER TN LKSDP ILS ANDAMAN ILS (.)

ARABIAN SEA:-

SCT LOW/MED CLOUDS WITH EMBDD MOD TO INT CONVTN OVER SOUTH ARSEA MALDIVES & COMORIN AREA (.) SCT LOW/MED CLOUDS WITH EMBDD ISOL WK TO MOD CONVTN OVER NORTH & CENTRAL ARSEA LKSDP ILS AREA (.)

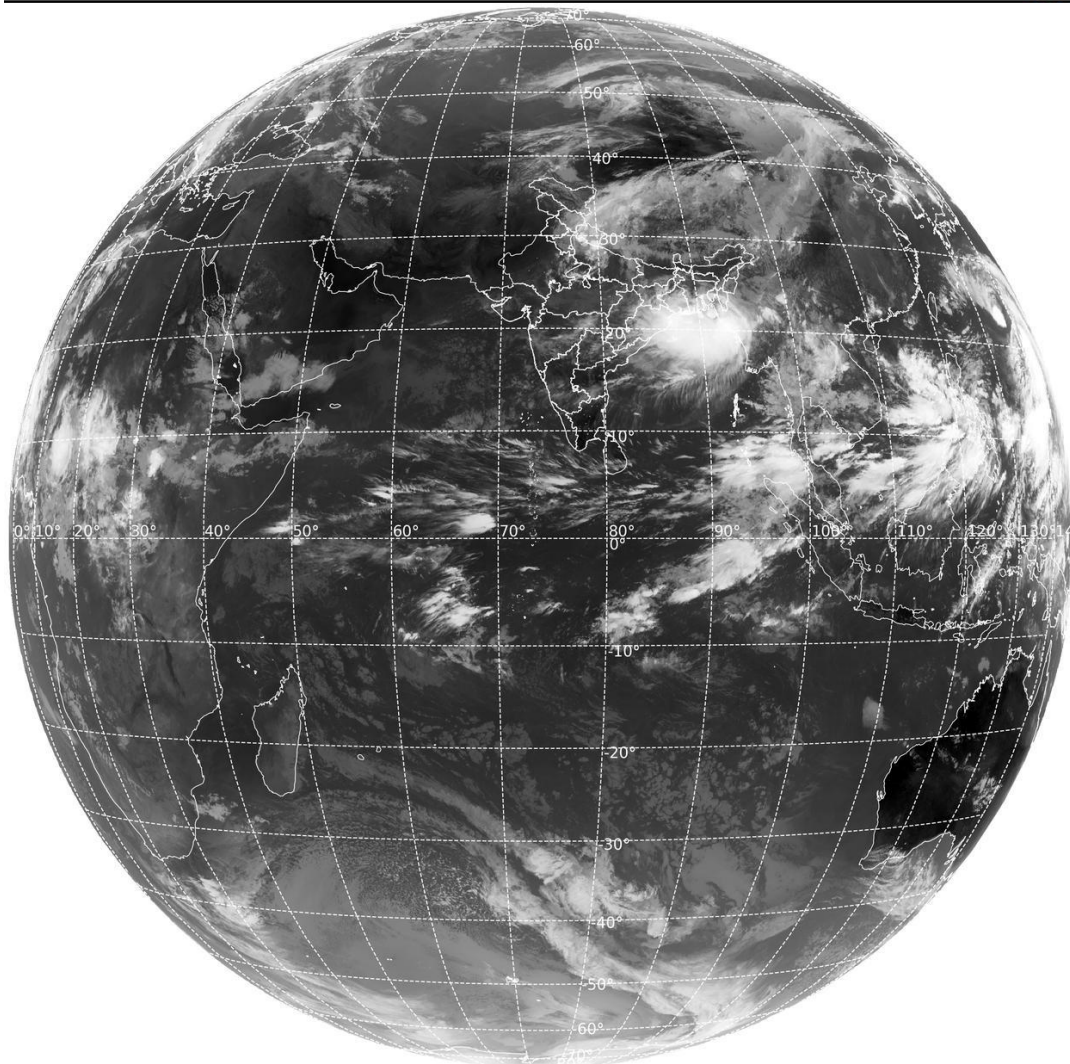
BAY OF BENGAL & ANDAMAN SEA:-

SCT TO BKN LOW/MED CLOUDS WITH EMBDD INT TO V INT CONVTN OVER NORTH ADJ CENTRAL BAY ARAKAN COAST SE BAY ANDAMAN SEA GULF OF MARTABAN & TENASSERIM COAST (MINIMUM CTT MINUS 70-93 DEG CEL) (.) SCT LOW/MED CLOUDS WITH EMBDD ISOL MOD TO INT CONVTN OVER REST BAY (.)

CLOUDS DESCRIPTION OUTSIDE INDIA:-

SAT : INSAT-3DR IMG
Thermal Infrared1 Count 10.8 um
L1B FULL DISK

13-09-2024/(0315 to 0342) GMT
13-09-2024/(0845 to 0912) IST



IMD,DELHI

SCT LOW/MED CLOUDS WITH EMBDD MOD TO INT CONVTN OVER S SRI LANKA MALDIVES NEPAL BHUTAN TIBET CHINA YELLOW SEA EAST CHINA SEA TAIWAN MYANMAR THAILAND GULF OF THAILAND CAMBODIA LAOS VIETNAM GULF OF TONKIN HAINAN SUMATRA STR OF MALACCA MALAYSIA BORNEO SOUTH CHINA SEA CELEBES ILS & SEA PHILIPPINES SULU SEA AND OVER INDIAN OCEAN BET LAT 5.0N TO 12.5S LONG 45.0E TO 105.0E (.)

TOO 13/0950 HRS IST=

NNNN

LEGEND:-

REGION	NORTH	J&K HP PJB HARY DLH UP UTRKND	
	EAST	BHR JHRKND CHTGH OR WB SKM NORTH- EAST STATES	
	WEST	RAJ MP GUJ MAHA GOA	
	SOUTH	TLNGN AP KRNTK KER TN LKSDP ANDAMAN & NICOBAR ILS	
CLOUD DISTRIBUTION	ISOL	ISOLATED (LESS THAN 25%)	
	SCT	SCATTERED (25 TO 50%)	
	BKN	BROKEN (51 TO 75%)	
	SLD	SOLID (GREATER THAN 75%)	
CLOUDS TOP TEMPERATURE	CTT	CLOUD TOP TEMPERATURE	
CONVECTION	WK CONV TN	WEAK CONVECTION (CTT GREATER THAN -25°C)	
	MOD CONV TN	MODERATE CONVECTION (CTT BETWEEN -25°C TO -40°C)	
	INT CONV TN	INTENSE CONVECTION (CTT BETWEEN -41°C TO -70°C)	
	V INT CONV TN	VERY INTENSE CONVECTION (CTT LESS THAN -70°C)	
METEOROLOGICAL SUB- DIVISIONS, STATES & UNION TERITORIES	ARUPR	ARUNACHAL PRADESH	
	BHR	BIHAR	
	CHTGH	CHHATTISGARH	
	COTL AP	COASTAL ANDHRA PRADESH	
	COTL KRNTK	COASTAL KARNATAKA	
	COTL ORS	COASTAL ORISSA	
	GUJ	GUJARAT	
	GWB	GANGETIC WEST BENGAL	
	HARY	HARYANA	
	DLH	DELHI	
	HP	HIMACHAL PRADESH	
	J&K	JAMMU AND KASHMIR	
	JHRKND	JHARKHAND	
	KER	KERALA	
	KKN	KONKAN	
	LKSDP	LAKSHADWEEP	
	M MAHA	MADHYA MAHARASHTRA	
	MAHA	MAHARASHTRA	
	MANI	MANIPUR	
	MEGHA	MEGHALAYA	
	MIZO	MIZORAM	
	MP	MADHYA PRADESH	
		MRTHWD	MARATHWADA
		NAGA	NAGALAND
N COTL AP		NORTH COASTAL ANDHRA PRADESH	
NIK		NORTH INTERIOR KARNATAKA	

	ORS	ORISSA
	PJB	PUNJAB
	RAJ	RAJASTHAN
	RYLSM	RAYALASEEMA
	SAU & KUTCH	SAURASHTRA & KUTCH
	SHWB	SUB-HIMALAYAN WEST BENGAL
	SIK	SOUTH INTERIOR KARNATAKA
	SKM	SIKKIM
	TLNGN	TELANGANA
	TN	TAMIL NADU
	TRP	TRIPURA
	UP	UTTAR PRADESH
	UTRKND	UTTARAKHAND
	VID	VIDHARBHA
	SHWB	SUB HIMALAYAN WEST BENGAL
	GWB	GANGETIC WEST BENGAL
	ARSEA	ARABIAN SEA
	ILS	ISLANDS
MISCELLANEOUS	ASSW	IN ASSOCIATION WITH
	ASSTD	ASSOCIATED
	LLC	LOW LEVEL CIRCULATION
	EMBDD	EMBEDDED
	N/HOOD	NEIGHBOURHOOD
	EXT	EXTREME