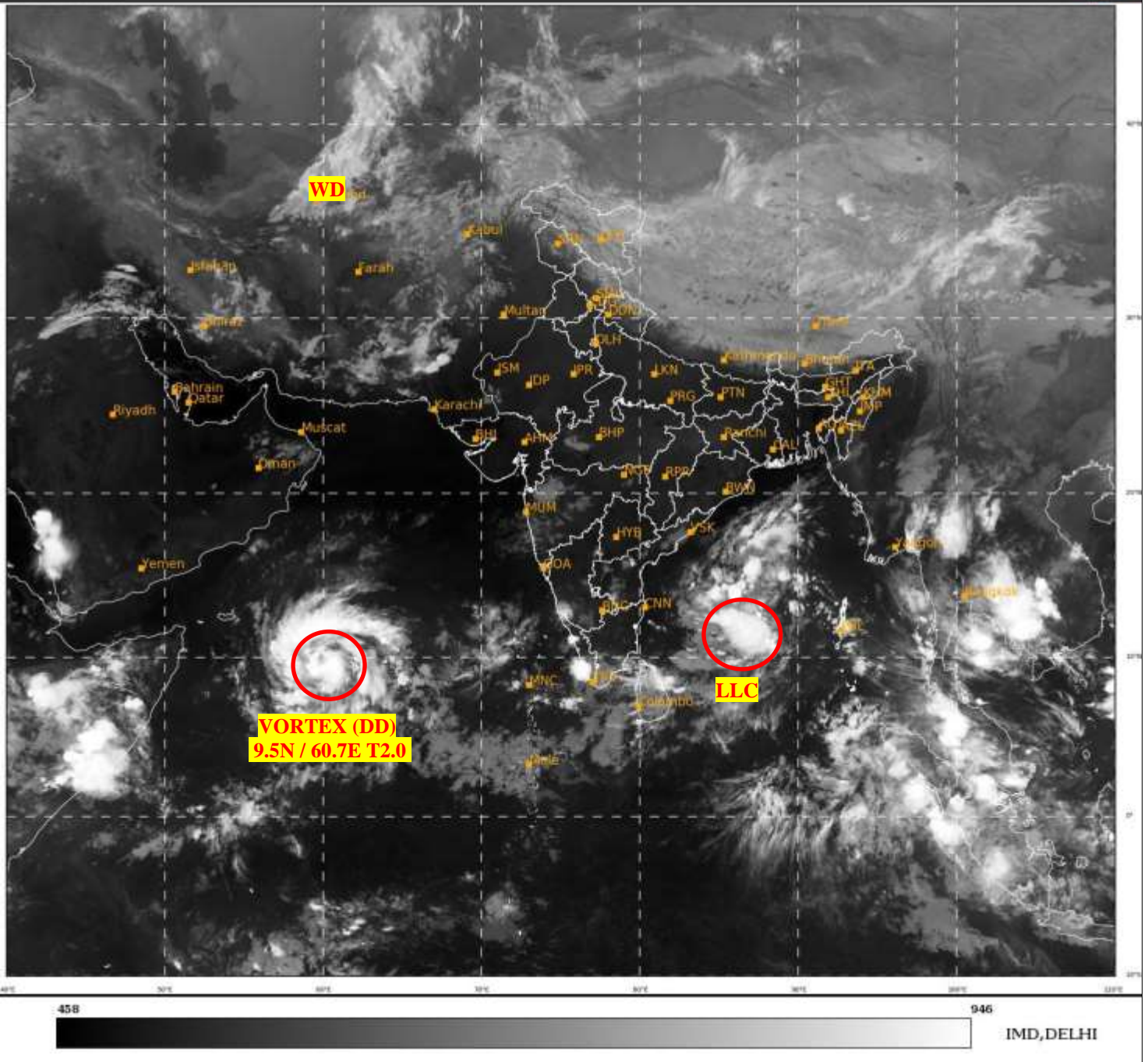




**SATELLITE BULLETIN BASED ON SATELLITE  
IMAGERIES AND PRODUCTS**  
**20.10.2023 TIME 1800 UTC**

SAT : INSAT-3DR IMG  
IMG\_TIR1 10.8 um  
LIC Mercator

20-10-2023/(1645 to 1712) GMT  
20-10-2023/(2215 to 2242) IST



TCIN50 DEMS 201800

SATELLITE BULLETIN BASED ON INSAT-3D PIC OF 201630 UTC (.)

REGION COVERED BETWEEN LAT 50.0°N TO 35.0°S AND LONG 40.0°E TO 125.0°E (.)

**SALIENT FEATURES:-**

**VORTEX (DD) OVER SOUTH-WEST ARSEA & N/HOOD:-**

VORTEX (DD) OVER SW ARSEA & N/HOOD AND NOW LAY CENTERED WITHIN HALF A DEGREE OF 9.5N / 60.7E (.) INTENSITY T2.0/2.0 (.) MAXIMUM SUSTAINED SURFACE WINDS (MSW) OF 28-33 KTS (.) ASSTD SCT TO BKN LOW/MED CLOUDS WITH EMBDD INT TO V INT CONVTN OVER SOUTH WEST ARSEA BET LAT 6.0N TO 13.0N LONG 57.5E TO 65.0.E (.) MINIMUM CTT MINUS 92 DEG CEL (.)

**LLC OVER SE ADJ SW BAY AND N/HOOD:-**

LOW LEVEL CIRCULATION (LLC) OVER SE ADJ SW BAY AND N/HOOD (.) ASSTD SCT TO BKN LOW/MED CLOUDS WITH EMBDD INT TO V INT CONVTN OVER BAY BET LAT 10.0N TO 18.0N LONG 83.0E TO 90.0E (.) MINIMUM CTT MINUS 82 DEG CEL (.)

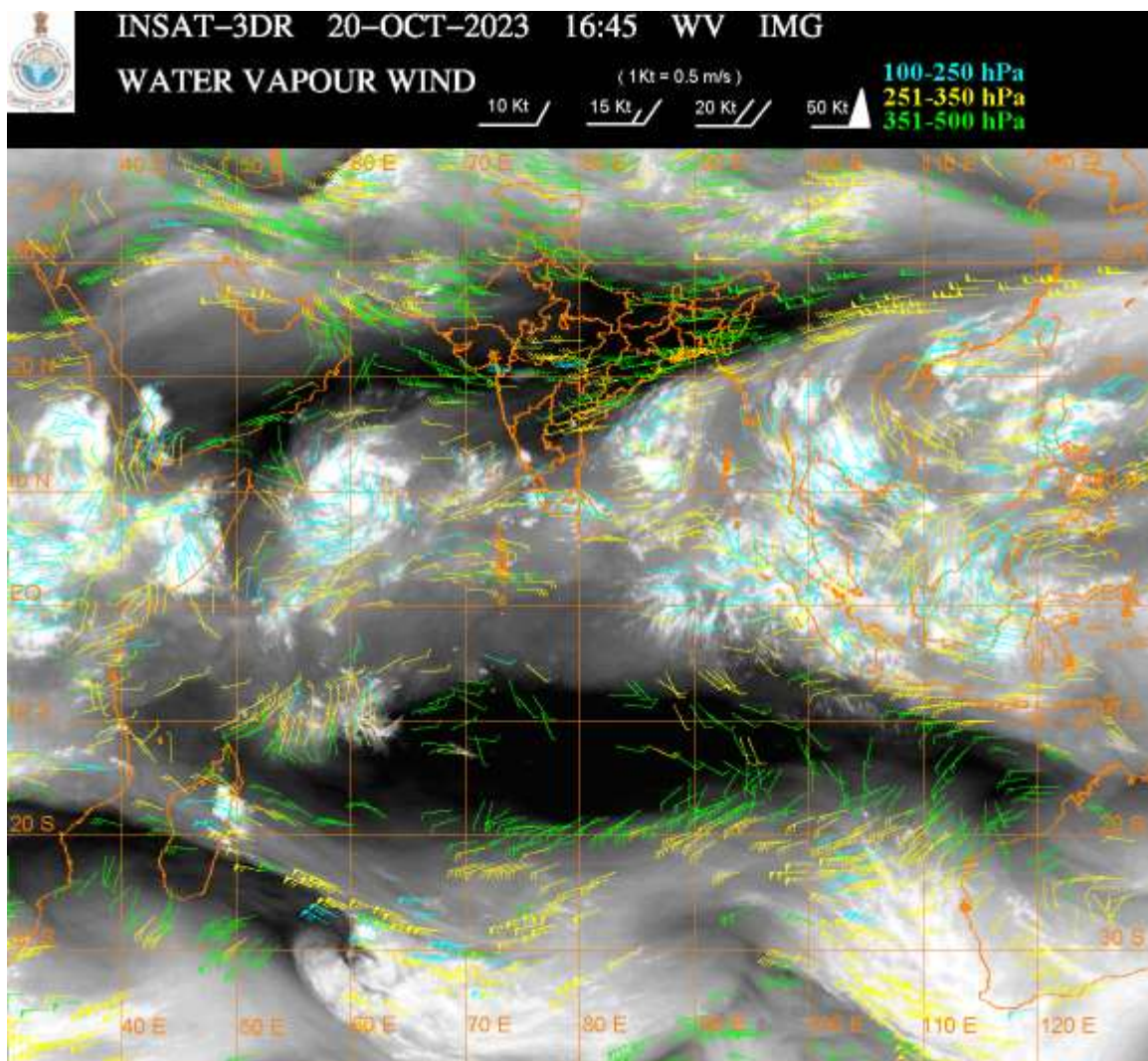
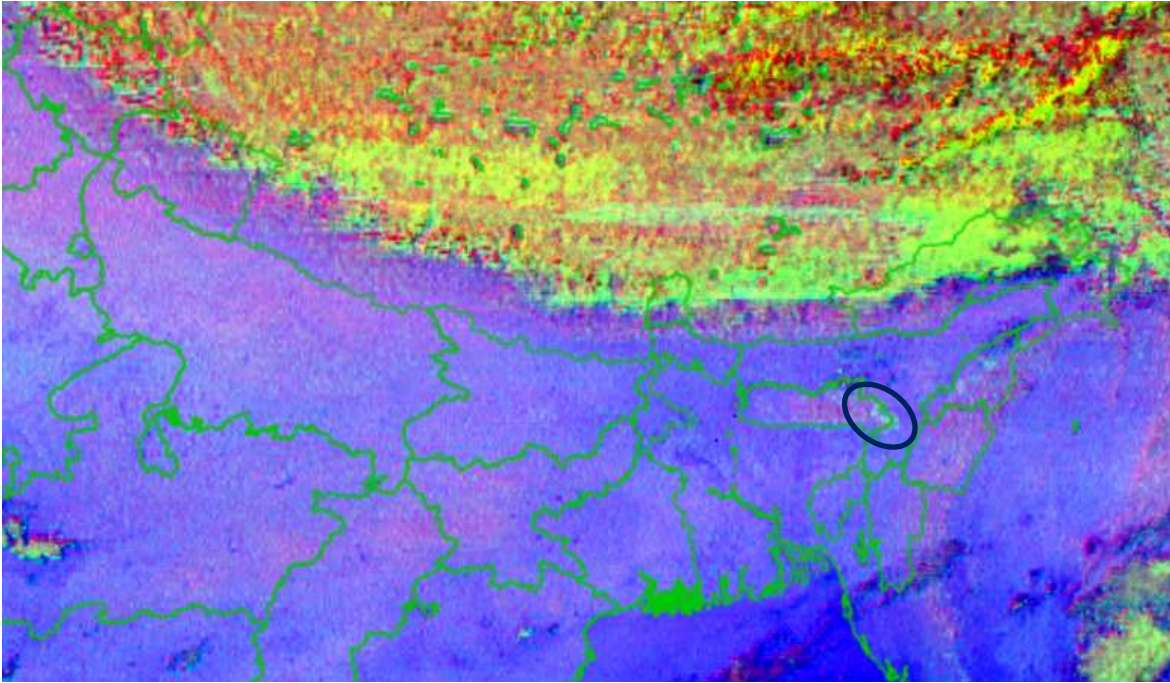


**FOG/LOW CLOUDS :-**

**NIGHT MICROPHYSICS RGB PRODUCT AT 1630 UTC INDICATES ISOL FOG/LOW CLOUDS OVER E MEGHA (.)**

**WESTERN DISTURBANCE (WD):-**

**SCT MULTILAYERED CLOUDS OVER IRAN AFGAN PAK AND N/HOOD IN ASSW **WD** OVER THE AREA (.)**



**CLOUDS DESCRIPTION WITHIN INDIA:-**

**NORTH:-**

**SCT LOW/MED CLOUDS WITH EMBDD ISOL WK CONVTN OVER LADAKH J&K N HP N UTRKND (.) ISOL LOW/MED CLOUDS OVER S HP S UTRKND (.)**

**EAST:-**

**SCT LOW/MED CLOUDS WITH EMBDD ISOL WK CONVTN OVER SKM ARUPR (.) ISOL TO SCT LOW/MED CLOUDS OVER ORS N SHWB MEGHA ASSAM NAGA MANI (.)**



### WEST:-

SCT LOW/MED CLOUDS WITH EMBDD ISOL WK CONVTN OVER SW RAJ SW MP NORTH MADHYA MAHA (.) SCT LOW/MED CLOUDS OVER REST MAHA (.)

### SOUTH:-

SCT LOW/MED CLOUDS WITH EMBDD INT TO V INT CONVTN OVER COTL KER AND MOD TO INT CONVTN OVER S COTL KRNTK ADJ S SIK NE RYLSM (.) SCT LOW/MED CLOUDS WITH EMBDD WK TO MOD CONVTN OVER S RYLSM LKSDP ILS ANDAMAN & NICOBAR ILS (.) SCT LOW/MED CLOUDS OVER REST KRNTK N COTL AP REST TN (.)

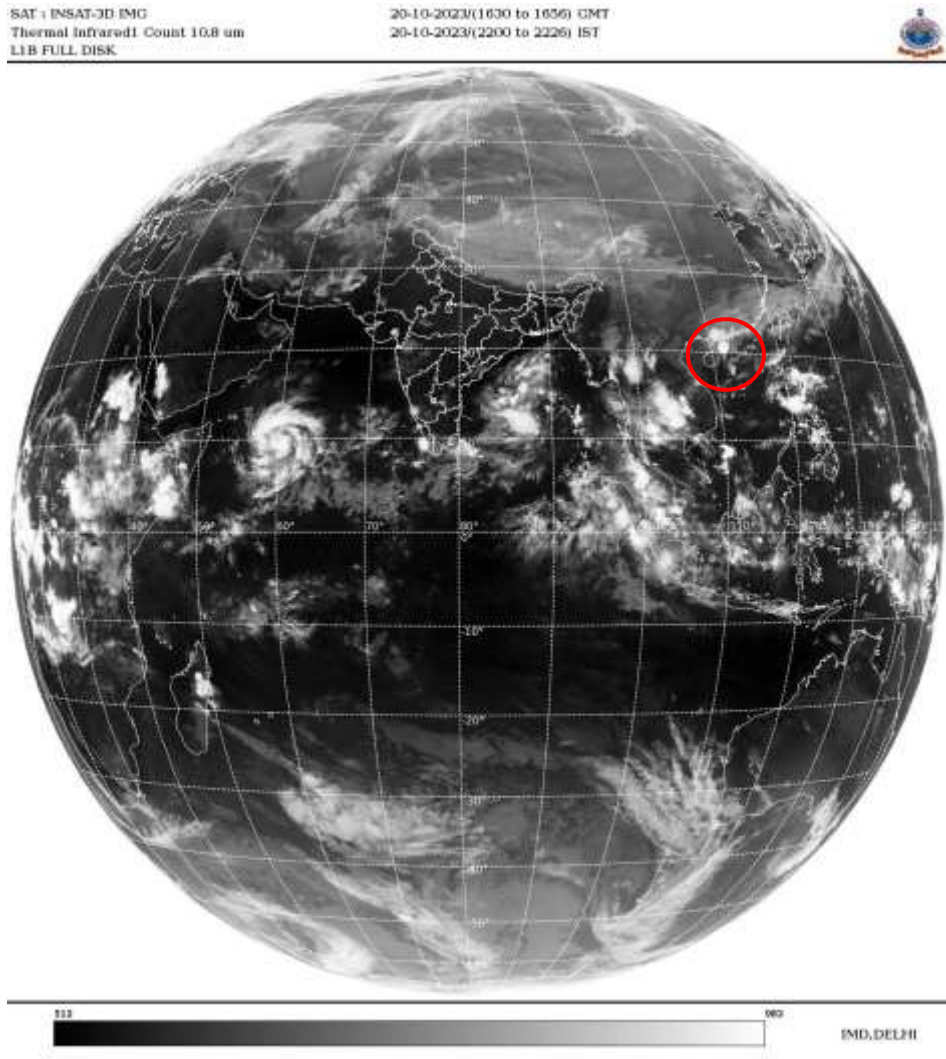
### ARABIAN SEA:-

SCT TO BKN LOW/MED CLOUDS WITH EMBDD INT TO V INT CONVTN OVER SW ADJ WC ARSEA (.) SCT LOW/MED CLOUDS WITH EMBDD MOD TO INT CONVTN OVER EC & SE ARSEA LKSDP ILS AREA AND COMORIN AREA (.)

### BAY OF BENGAL & ANDAMAN SEA:-

SCT LOW/MOD CLOUDS WITH EMBDD INT TO V INT CONVTN OVER CENTRAL & SOUTH BAY (.) SCT LOW/MOD CLOUDS WITH EMBDD MOD TO INT CONVTN OVER SOUTH PARTS OF NW BAY ANDAMAN SEA TENASSERIM COAST (.)

### CLOUDS DESCRIPTION OUTSIDE INDIA:-



### VORTEX (SANBA) OVER SOUTH CHINA SEA:-

VORTEX (SANBA) OVER SOUTH CHINA SEA (AREA F05) CENTERED NEAR 20.2N / 108.9E (.) INTENSITY T1.5/2.5 (.) CORRESPONDING MAXIMUM SUSTAINED SURFACE WINDS OF 17-27 KTS (.) ASSTD SCT LOW/MED CLOUDS WITH EMBDD MOD TO INT CONVTN OVER AREA BET LAT 18.5N TO 24.0N LONG 110.0E TO 117.0E AND TAIWAN (.)

SCT LOW/MED CLOUDS WITH EMBDD MOD TO INT CONVTN OVER SRI LANKA PALK STR GULF OF MANNAR MALDIVES PAK TIBET CHINA EAST CHINA SEA TAIWAN S MYANMAR THAILAND GULF OF THAILAND CAMBODIA LAOS VIETNAM SUMATRA STR OF MALACCA MALAYSIA BORNEO SOUTH CHINA SEA JAVA ILS & SEA CELEBES ILS & SEA PHILIPPINES SULU SEA AND OVER INDIAN OCEAN BET LAT 5.0N TO 12.0S LONG 45.0E TO 75.0E AND BET LAT 5.0N TO 7.0S LONG 75.0E TO 104.0E (.)

**LEGEND:-**

<b>REGION</b>	<b>NORTH</b>	<b>J&amp;K HP PJB HARY DLH UP UTRKND</b>
	<b>EAST</b>	<b>BHR JHRKND CHTGH OR WB SKM NORTH- EAST STATES</b>
	<b>WEST</b>	<b>RAJ MP GUJ MAHA GOA</b>
	<b>SOUTH</b>	<b>TLNGN AP KRNTK KER TN LKSDP ANDAMAN &amp; NICOBAR ILS</b>
<b>CLOUD DISTRIBUTION</b>	<b>ISOL</b>	<b>ISOLATED (LESS THAN 25%)</b>
	<b>SCT</b>	<b>SCATTERED (25 TO 50%)</b>
	<b>BKN</b>	<b>BROKEN (51 TO 75%)</b>
	<b>SLD</b>	<b>SOLID (GREATER THAN 75%)</b>
<b>CLOUDS TOP TEMPERATURE</b>	<b>CTT</b>	<b>CLOUD TOP TEMPERATURE</b>
<b>CONVECTION</b>	<b>WK CONVTN</b>	<b>WEAK CONVECTION (CTT GREATER THAN -25°C)</b>
	<b>MOD CONVTN</b>	<b>MODERATE CONVECTION (CTT BETWEEN -25°C TO -40°C)</b>
	<b>INT CONVTN</b>	<b>INTENSE CONVECTION (CTT BETWEEN -41°C TO -70°C)</b>
	<b>V INT CONVTN</b>	<b>VERY INTENSE CONVECTION (CTT LESS THAN -70°C)</b>
<b>METEOROLOGICAL SUB- DIVISIONS, STATES &amp; UNION TERRITORIES</b>	<b>ARUPR</b>	<b>ARUNACHAL PRADESH</b>
	<b>BHR</b>	<b>BIHAR</b>
	<b>CHTGH</b>	<b>CHHATTISGARH</b>
	<b>COTL AP</b>	<b>COASTAL ANDHRA PRADESH</b>
	<b>COTL KRNTK</b>	<b>COASTAL KARNATAKA</b>
	<b>COTL ORS</b>	<b>COASTAL ORISSA</b>
	<b>GUJ</b>	<b>GUJARAT</b>
	<b>GWB</b>	<b>GANGETIC WEST BENGAL</b>
	<b>HARY</b>	<b>HARYANA</b>
	<b>DLH</b>	<b>DELHI</b>
	<b>HP</b>	<b>HIMACHAL PRADESH</b>
	<b>J&amp;K</b>	<b>JAMMU AND KASHMIR</b>
	<b>JHRKND</b>	<b>JHARKHAND</b>
	<b>KER</b>	<b>KERALA</b>
	<b>KKN</b>	<b>KONKAN</b>
<b>LKSDP</b>	<b>LAKSHADWEEP</b>	

	<b>M MAHA</b>	<b>MADHYA MAHARASHTRA</b>
	<b>MAHA</b>	<b>MAHARASHTRA</b>
	<b>MANI</b>	<b>MANIPUR</b>
	<b>MEGHA</b>	<b>MEGHALAYA</b>
	<b>MIZO</b>	<b>MIZORAM</b>
	<b>MP</b>	<b>MADHYA PRADESH</b>
	<b>MRTHWD</b>	<b>MARATHWADA</b>
	<b>NAGA</b>	<b>NAGALAND</b>
	<b>N COTL AP</b>	<b>NORTH COASTAL ANDHRA PRADESH</b>
	<b>NIK</b>	<b>NORTH INTERIOR KARNATAKA</b>
	<b>ORS</b>	<b>ORISSA</b>
	<b>PJB</b>	<b>PUNJAB</b>
	<b>RAJ</b>	<b>RAJASTHAN</b>
	<b>RYLSM</b>	<b>RAYALASEEMA</b>
	<b>SAU &amp; KUTCH</b>	<b>SAURASHTRA &amp; KUTCH</b>
	<b>SHWB</b>	<b>SUB-HIMALAYAN WEST BENGAL</b>
	<b>SIK</b>	<b>SOUTH INTERIOR KARNATAKA</b>
	<b>SKM</b>	<b>SIKKIM</b>
	<b>TLNGN</b>	<b>TELANGANA</b>
	<b>TN</b>	<b>TAMIL NADU</b>
	<b>TRP</b>	<b>TRIPURA</b>
	<b>UP</b>	<b>UTTAR PRADESH</b>
	<b>UTRKND</b>	<b>UTTARAKHAND</b>
	<b>VID</b>	<b>VIDHARBHA</b>
	<b>SHWB</b>	<b>SUB HIMALAYAN WEST BENGAL</b>
	<b>GWB</b>	<b>GANGETIC WEST BENGAL</b>
	<b>ARSEA</b>	<b>ARABIAN SEA</b>
	<b>ILS</b>	<b>ISLANDS</b>
<b>MISCELLANEOUS</b>	<b>ASSW</b>	<b>IN ASSOCIATION WITH</b>
	<b>ASSTD</b>	<b>ASSOCIATED</b>
	<b>LLC</b>	<b>LOW LEVEL CIRCULATION</b>
	<b>EMBDD</b>	<b>EMBEDDED</b>
	<b>N/HOOD</b>	<b>NEIGHBOURHOOD</b>
	<b>EXT</b>	<b>EXTREME</b>