

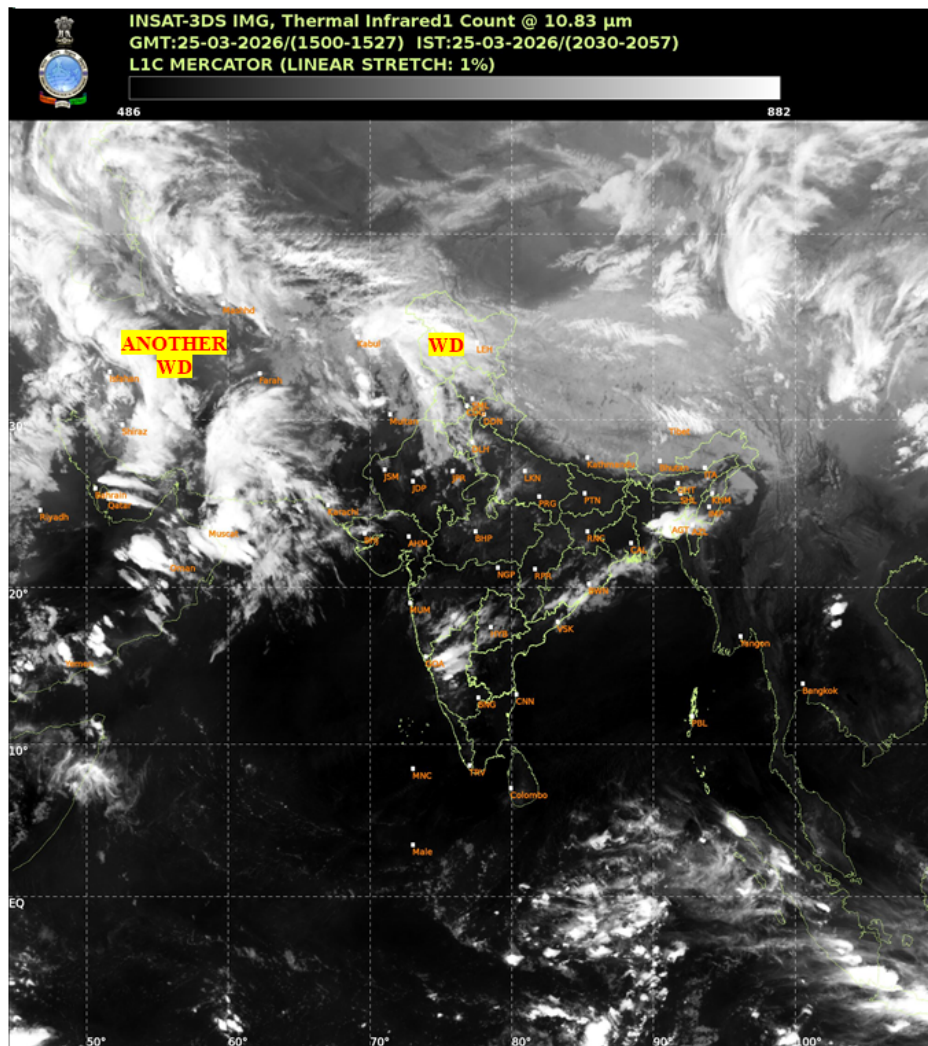


भारत मौसम विज्ञान विभाग
पृथ्वी विज्ञान मंत्रालय
India Meteorological Department
Ministry of Earth Sciences



SATELLITE BULLETIN BASED ON SATELLITE IMAGERIES AND PRODUCTS

Date: 2026-03-25 Time: 15:00:00 UTC



TCIN50 DEMS 251500

SATELLITE BULLETIN BASED ON INSAT-3DS PIC OF 251500 UTC (.)

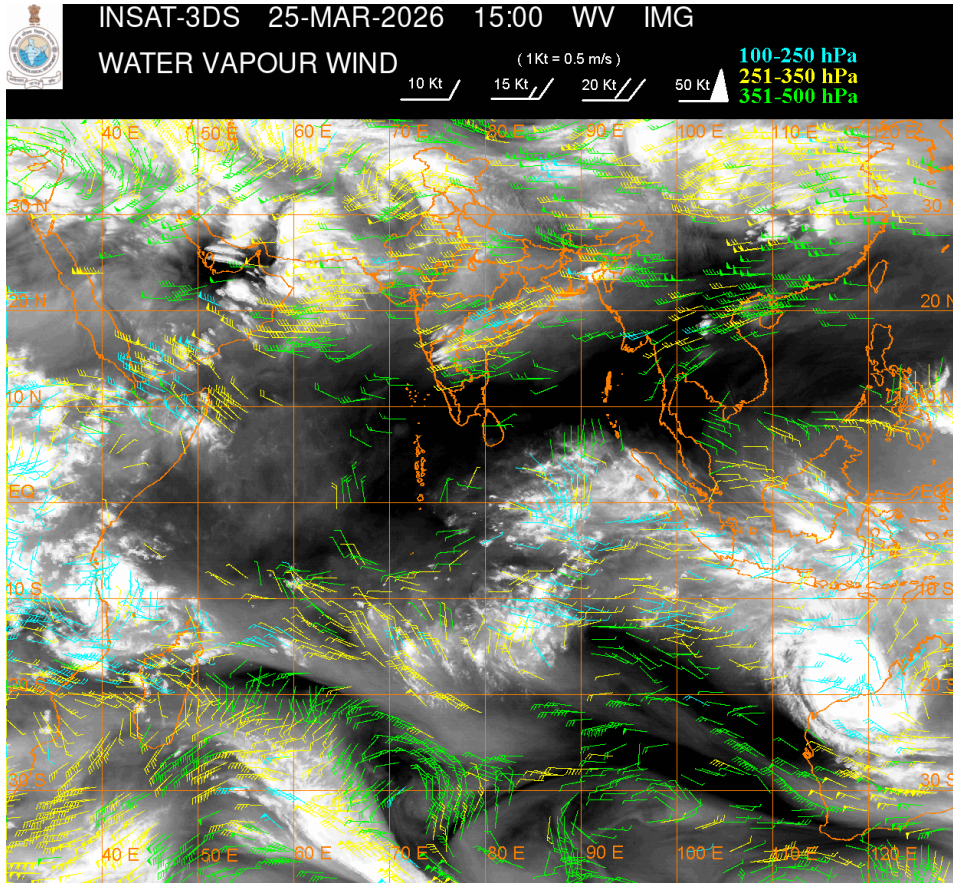
REGION COVERED BETWEEN LAT 50.0°N TO 35.0°S AND LONG 40.0°E TO 125.0°E (.)

SALIENT FEATURES:

WESTERN DISTURBANCE (WD):-

SCT TO BKN MULTILAYERED CLOUDS OVER EAST IRAN AFGAN PAK PJB RAJ GUJ IN ASSW WD OVER THE AREA (.)

SCT TO BKN MULTILAYERED CLOUDS OVER WEST IRAN AND N/HOOD IN ASSW ANOTHER WD OVER THE AREA (.)



CLOUD DESCRIPTION WITHIN INDIA:

NORTH:

SCT LOW/MED CLOUDS WITH EMBDD MOD TO INT CONVTN OVER LADAKH J&K N HP AND WK TO MOD CONVTN OVER S HP N UTRKND PJB HARY DLH (.) SCT LOW/MED CLOUDS OVER S UTRKND W UP (.)

EAST:

SCT LOW/MED CLOUDS WITH EMBDD MOD TO INT CONVTN OVER ORS S GWB MIZO TRP AND WK TO MOD CONVTN OVER CHTGH COTL ORS SKM REST NE STATES (.) SCT LOW/MED CLOUDS OVER CHTGH REST ORS BHR JHRKND N GWB SHWB (.)

WEST:

SCT LOW/MED CLOUDS WITH EMBDD WK TO MOD CONVTN OVER RAJ GUJ MP MRTHWD (.) SCT LOW/MED CLOUDS OVER RESTH MAHA GOA (.)

SOUTH:

SCT LOW/MED CLOUDS WITH EMBDD MOD TO INT CONVTN OVER KRNTK N COTL AP (.) SCT LOW/MED CLOUDS OVER TLNGN RYLSM S COTL AP KER TN LKSDP ILS & NICOBAR ILS (.)

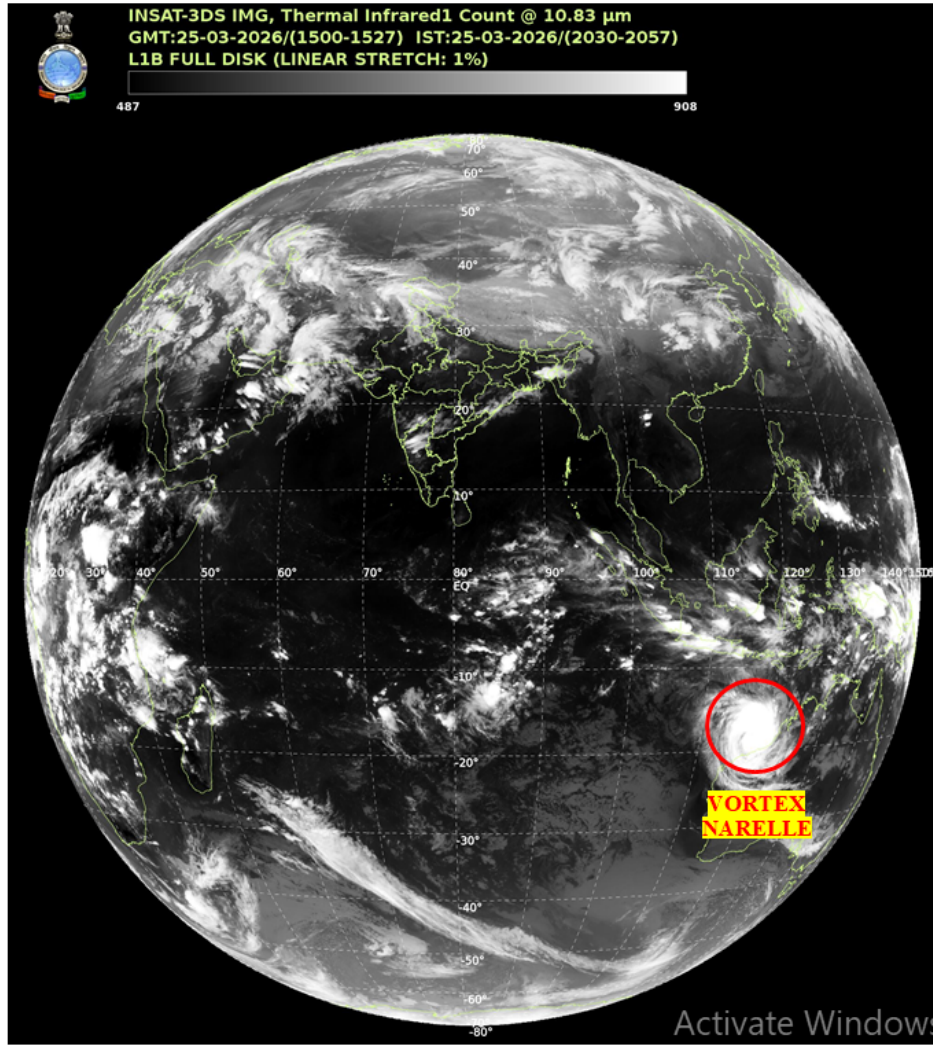
ARABIAN SEA:

SCT LOW/MED CLOUDS WITH EMBDD MOD TO INT CONVTN OVER NORTH ARSEA AND ISOL WK TO MOD CONVTN OVER WC & SW ARSEA (.)

BAY OF BENGAL & ANDAMAN SEA:

SCT LOW/MED CLOUDS WITH EMBDD MOD TO INT CONVTN OVER NORTH BAY AND EXTREME SE BAY (.)

CLOUD DESCRIPTION OUTSIDE INDIA:



VORTEX (NARELLE) OVER SOUTH INDIAN OCEAN:-

VORTEX (NARELLE) OVER SOUTH INDIAN OCEAN (AREA G30) CENTERED NEAR 18.2S / 117.4E (.)
 INTENSITY T5.0/5.0 (.) MAXIMUM SUSTAINED WINDS 90-119 KTS (.) ASSTD SCT TO BKN LOW/MED
 CLOUDS WITH EMBDD INT TO V INT CONVTN OVER AREA BET LAT 13.0S TO 24.0S AND LONG
 114.0E TO 125.0E (.)

SCT LOW/MED CLOUDS WITH EMBDD MOD TO INT CONVTN OVER PAK TIBET CHINA NORTH
 MYANMAR NORTH VIETNAM SUMATRA STR OF MALACCA MALAYSIA BORNEO SOUTH CHINA SEA
 JAVA ILS & SEA CELEBES ILS & SEA NORTH MADAGASCAR MOZAMBIQUE CHANNEL AND OVER
 INDIAN OCEAN BET LAT 5.0N TO LAT 20.0S LONG 40.0E TO 125.0E AND BET LAT 20.0S TO LAT 35.0S
 LONG 40.0E TO 70.0E (.)

T00 25/2110 HRS IST

NNNN

LEGEND

REGION	
NORTH	J&K HP UTRKND PJB HARY DLH UP
EAST	BHR JHRKND CHTGH ORS WB SKM NORTH-EAST STATES
WEST	RAJ MP GUJ MAHA GOA

SOUTH	TLNGN AP KRNTK KER TN LKSDP ANDAMAN & NICOBAR ILS
CLOUD DISTRIBUTION	
ISOL	ISOLATED (LESS THAN 25%)
SCT	SCATTERED (25 TO 50%)
BKN	BROKEN (51 TO 75%)
SLD	SOLID (GREATER THAN 75%)
CLOUDS TOP TEMPERATURE	
CTT	CLOUD TOP TEMPERATURE
CONVECTION	
WK CONVTN	WEAK CONVECTION (CTT GREATER THAN -25°C)
MOD CONVTN	MODERATE CONVECTION (CTT BETWEEN -25°C TO -40°C)
INT CONVTN	INTENSE CONVECTION (CTT BETWEEN -41°C TO -70°C)
V INT CONVTN	VERY INTENSE CONVECTION (CTT LESS THAN -70°C)
METEOROLOGICAL SUB-DIVISIONS, STATES & UNION TERRITORIES	
J&K	JAMMU AND KASHMIR
HP	HIMACHAL PRADESH
UTRKND	UTTARAKHAND
PJB	PUNJAB
HARY	HARYANA
DLH	DELHI
BHR	BIHAR
JHRKND	JHARKHAND
CHTGH	CHHATTISGARH
ORS	ORISSA
GWB	GANGETIC WEST BENGAL
SHWB	SUB-HIMALAYAN WEST BENGAL
SKM	SIKKIM
ARUPR	ARUNACHAL PRADESH
ASSAM	ASSAM
MEGHA	MEGHALAYA
MANI	MANIPUR
MIZO	MIZORAM
TRP	TRIPURA
RAJ	RAJASTHAN

MP	MADHYA PRADESH
GUJ	GUJARAT
SAU & KUTCH	SAURASHTRA & KUTCH
MAHA	MAHARASHTRA
M MAHA	MADHYA MAHARASHTRA
MRTHWD	MARATHWADA
VID	VIDARBHA
KKN	KONKAN
TLNGN	TELANGANA
RYLSM	RAYALSEEMA
COTL AP	COASTAL ANDHRA PRADESH
NIK	NORTH INTERIOR KARNATAKA
SIK	SOUTH INTERIOR KARNATAKA
COTL KRNTK	COASTAL KARNATAKA
KER	KERALA
TN	TAMILNADU
LKSDP	LAKSHADWEEP
ILS	ISLANDS
ARSEA	ARABIAN SEA
MISCELLANEOUS	
ASSW	IN ASSOCIATION WITH
ASSTD	ASSOCIATED
LLC	LOW LEVEL CIRCULATION
EMBDD	EMBEDDED
N/HOOD	NEIGHBOURHOOD
EXT	EXTREME