



भारत मौसम विज्ञान विभाग  
पृथ्वी विज्ञान मंत्रालय  
India Meteorological Department  
Ministry of Earth Sciences

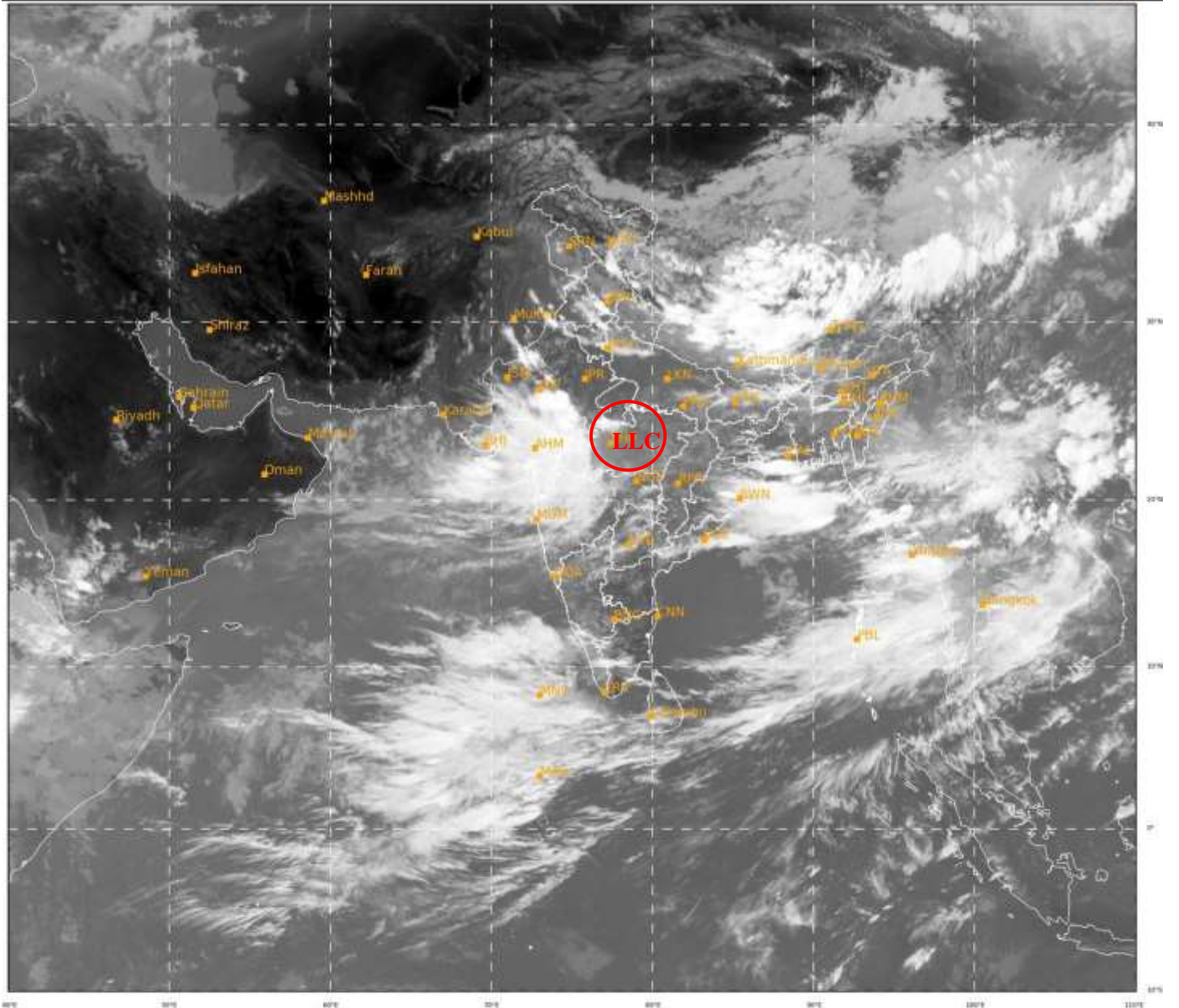


**SATELLITE BULLETIN BASED ON SATELLITE IMAGERIES  
AND PRODUCTS**

**25.07.2021 TIME 0900 UTC**

SAT : INSAT-3D IMG  
IMG\_TIR1 10.8 um  
LIC Mercator

25-07-2021/(0900 to 0926) GMT  
25-07-2021/(1430 to 1456) IST



203

947

IMD, DELHI

TCIN50 DEMS 250900

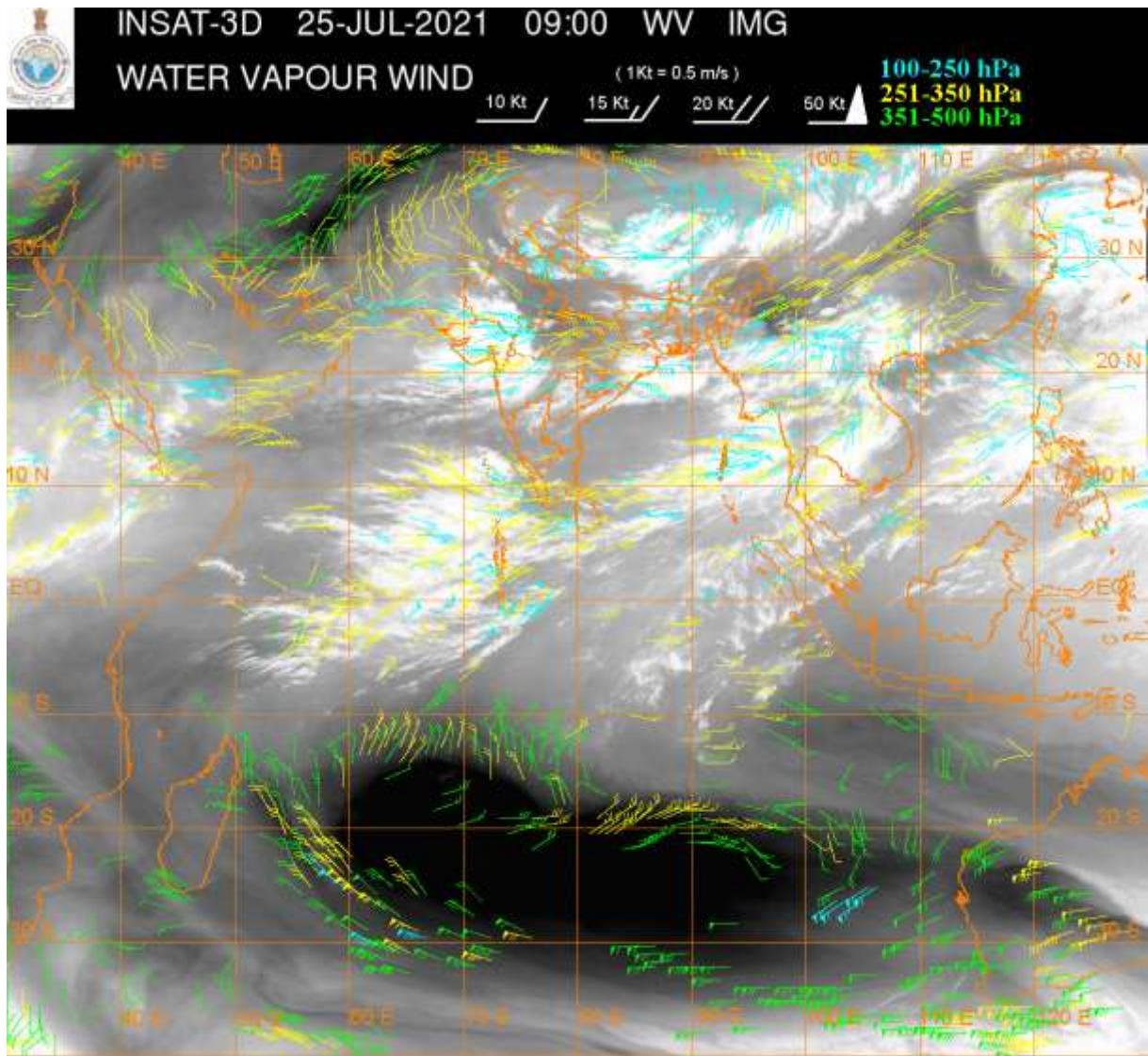
SATELLITE BULLETIN BASED ON INSAT-3D PIC OF 250900 UTC (.)

REGION COVERED BETWEEN LAT 50.0°N TO 30.0°S AND LONG 40.0°E TO 125.0°E (.)

**SATLIENT FEATURES:-**

**LLC OVER CENTRAL PARTS OF N MP & N/HOOD:-**

LLC OVER CENTRAL PARTS OF N MP & N/HOOD (.) ASSTD BKN LOW/MED CLOUDS WITH EMBDD INT TO V INT CONVTN OVER SW MP S RAJ GUJ (MINIMUM CTT MINUS 81 DEG CEL) (.)



**CLOUDS DESCRIPTION WITHIN INDIA:-**

**NORTH:-**

SCT LOW/MED CLOUDS WITH EMBDD MOD TO INT CONVTN OVER SE LADAKH EXT PARTS OF HP UTRKND EC & EXT W PJB N HARY DLH NW UP (.) SCT LOW/MED CLOUDS WITH EMBDD ISOL WK TO MOD CONVTN OVER J&K N LADAKH N UTRKND EC UP (.) SCT LOW/MED CLOUDS OVER REST HP S UTRKND REST UP (.)

**EAST:-**

SCT TO BKN LOW/MED CLOUDS WITH EMBDD INT TO V INT CONVTN OVER S GWB NE ORS (.) SCT LOW/MED CLOUDS WITH EMBDD MOD TO INT CONVTN OVER NC BHR EC JHRKND N SHWB SKM W MEGHA (.) SCT LOW/MED CLOUDS WITH EMBDD ISOL WK TO MOD CONVTN OVER S CHTGH SE ORS EXT PARTS OF ASSAM MANI (.) SCT LOW/MED CLOUDS OVER N CHTGH REST JHRKND W ORS S BHR REST NE STATES (.)

**WEST:-**

BKN LOW/MED CLOUDS WITH EMBDD INT TO V INT CONVTN OVER SW MP EXT W&S RAJ E GUJ (MINIMUM CTT MINUS 81 DEG C) (.) SCT LOW/MED CLOUDS WITH EMBDD MOD TO INT CONVTN OVER W GUJ EC VID NORTH MADHYA MAHA N KKN AND ISOL WK TO MOD CONVTN OVER REST MAHA (.) SCT LOW/MED CLOUDS OVER REST MP N RAJ & GOA (.)

**SOUTH:-**

SCT LOW/MED CLOUDS WITH EMBDD MOD TO INT CONVTN OVER N COTL AP TLNGN NE KRNTK N KER EXT W TN LKSDP ANDAMAN (.) SCT LOW/MED CLOUDS WITH EMBDD ISOL WK TO MOD CONVTN OVER SIK SE TN (.) SCT LOW/MED CLOUDS OVER RYLSM S COTL AP REST KRNTK REST TN S KER & NICOBAR ILS (.)

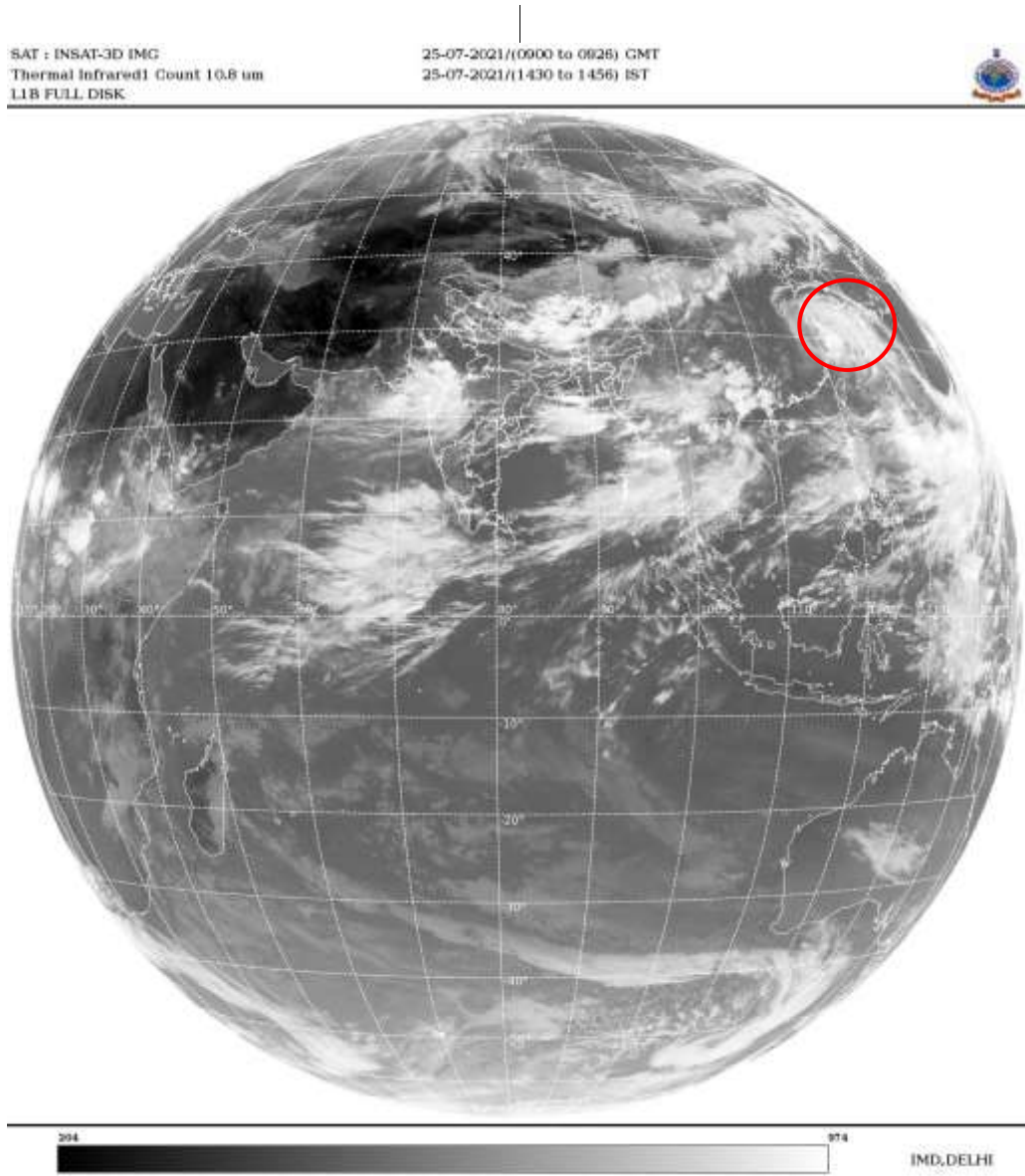
**ARABIAN SEA:-**

SCT LOW/MED CLOUDS WITH EMBDD MOD TO INT CONVTN OVER SE ARSEA & NE ARSEA GULF OF KUTCH GULF OF CAMBAY (.)

**BAY OF BENGAL & ANDAMAN SEA:-**

**SCT LOW/MED CLOUDS WITH EMBDD INT TO V INT CONVTN OVER N BAY N ANDAMAN SEA AND MOD TO INT CONVTN OVER S BAY S ANDAMAN SEA (.)**

**CLOUDS DESCRIPTION OUTSIDE INDIA:-**



**VORTEX (IN-FA) OVER EAST CHINA SEA & N/HOOD:-**

**VORTEX (IN-FA) OVER EAST CHINA SEA & N/HOOD CENTERED NEAR 30.3N/122.3E (.) INTENSITY T3.0/3.5 (.) ASSTD BKN LOW/MED CLOUDS WITH EMBDD INT TO V INT CONVTN OVER AREA BET LAT 25.0N TO 37.0N LONG 116.0E TO 130.0E (.)**

**SCT LOW/MED CLOUDS WITH EMBDD MOD TO INT CONVTN OVER SRI LANKA MALDIVES NEPAL BHUTAN TIBET CHINA MYANMAR THAILAND GULF OF THAILAND CAMBODIA LAOS N VIETNAM N SUMATRA STR OF MALACCA MALAY PENINSULA N BORNEO S CHINA SEA CELEBES SEA PHILIPPINES TAIWAN E CHINA SEA YELLOW SEA AND OVER INDIAN OCEAN BET LAT 5.0N TO 5.0S LONG 53.0E TO 78.0E AND LAT 5.0N TO 10.0S LONG 85.0E TO 100.0E (.)**

**TOO 25/1530EF=**

**NNNN**

**LEGEND:-**

|               |              |  |
|---------------|--------------|--|
| <b>REGION</b> | <b>NORTH</b> | <b>J&amp;K HP PJB HARY DLH UP UTRKND</b>             |
|               | <b>EAST</b>  | <b>BHR JHRKND CHTGH ORS WB SKMNORTH- EAST STATES</b> |

|  |              |  |
|--|--------------|--|
|  | <b>WEST</b>  | <b>RAJ MP GUJ MAHA GOA</b>                                       |
|  | <b>SOUTH</b> | <b>TLNGN AP KRNTK KER TN LKSDP<br/>ANDAMAN &amp; NICOBAR ILS</b> |

|   |                     |   |
|---|---------------------|---|
| <b>CLOUD DISTRIBUTION</b>   | <b>ISOL</b>         | <b>ISOLATED (LESS THAN 25%)</b>                             |
|   | <b>SCT</b>          | <b>SCATTERED (25 TO 50%)</b>                                |
|   | <b>BKN</b>          | <b>BROKEN (51 TO 75%)</b>                                   |
|   | <b>SLD</b>          | <b>SOLID (GREATER THAN 75%)</b>                             |
| <b>CLOUDS TOP TEMPERATURE</b>                                       | <b>CTT</b>          | <b>CLOUD TOP TEMPERATURE</b>                                |
| <b>CONVECTION</b>   | <b>WK CONVTN</b>    | <b>WEAK CONVECTION<br/>(CTT GREATER THAN -25°C)</b>         |
|   | <b>MOD CONVTN</b>   | <b>MODERATE CONVECTION<br/>(CTT BETWEEN -25°C TO -40°C)</b> |
|   | <b>INT CONVTN</b>   | <b>INTENSE CONVECTION<br/>(CTT BETWEEN -41°C TO -70°C)</b>  |
|   | <b>V INT CONVTN</b> | <b>VERY INTENSE CONVECTION<br/>(CTT LESS THAN -70°C)</b>    |
| <b>METEOROLOGICAL SUB-DIVISIONS, STATES &amp; UNION TERRITORIES</b> | <b>ARUPR</b>        | <b>ARUNACHAL PRADESH</b>                                    |
|   | <b>BHR</b>          | <b>BIHAR</b>  |
|   | <b>CHTGH</b>        | <b>CHHATTISGARH</b>   |
|   | <b>COTL AP</b>      | <b>COASTAL ANDHRA PRADESH</b>                               |
|   | <b>COTL KRNTK</b>   | <b>COASTAL KARNATAKA</b>                                    |
|   | <b>COTL ORS</b>     | <b>COASTAL ORISSA</b>                                       |
|   | <b>GUJ</b>          | <b>GUJARAT</b>  |
|   | <b>GWB</b>          | <b>GANGETIC WEST BENGAL</b>                                 |
|   | <b>HARY</b>         | <b>HARYANA</b>  |
|   | <b>DLH</b>          | <b>DELHI</b>  |
|   | <b>HP</b>           | <b>HIMACHAL PRADESH</b>                                     |
|   | <b>J&amp;K</b>      | <b>JAMMU AND KASHMIR</b>                                    |
|   | <b>JHRKND</b>       | <b>JHARKHAND</b>  |
|   | <b>KER</b>          | <b>KERALA</b>   |
|   | <b>KKN</b>          | <b>KONKAN</b>   |
|   | <b>LKSDP</b>        | <b>LAKSHADWEEP</b>  |
|   | <b>M MAHA</b>       | <b>MADHYA MAHARASHTRA</b>                                   |
|   | <b>MAHA</b>         | <b>MAHARASHTRA</b>  |
|   | <b>MANI</b>         | <b>MANIPUR</b>  |
|   | <b>MEGHA</b>        | <b>MEGHALAYA</b>  |
|   | <b>MIZO</b>         | <b>MIZORAM</b>  |
|   | <b>MP</b>           | <b>MADHYA PRADESH</b>                                       |
|   | <b>MRTHWD</b>       | <b>MARATHWADA</b>   |
|   | <b>NAGA</b>         | <b>NAGALAND</b>   |
|   | <b>N COTL AP</b>    | <b>NORTH COASTAL ANDHRA PRADESH</b>                         |
|   | <b>NIK</b>          | <b>NORTH INTERIOR KARNATAKA</b>                             |
|   | <b>ORS</b>          | <b>ORISSA</b>   |
|   | <b>PJB</b>          | <b>PUNJAB</b>   |
|   | <b>RAJ</b>          | <b>RAJASTHAN</b>  |
|   | <b>RYLSM</b>        | <b>RAYALASEEMA</b>  |

|                      |                        |                                  |
|----------------------|------------------------|----------------------------------|
|                      | <b>SAU &amp; KUTCH</b> | <b>SAURASHTRA &amp; KUTCH</b>    |
|                      | <b>SHWB</b>            | <b>SUB-HIMALAYAN WEST BENGAL</b> |
|                      | <b>SIK</b>             | <b>SOUTH INTERIOR KARNATAKA</b>  |
|                      | <b>SKM</b>             | <b>SIKKIM</b>                    |
|                      | <b>TLNGN</b>           | <b>TELANGANA</b>                 |
|                      | <b>TN</b>              | <b>TAMIL NADU</b>                |
|                      | <b>TRP</b>             | <b>TRIPURA</b>                   |
|                      | <b>UP</b>              | <b>UTTAR PRADESH</b>             |
|                      | <b>UTRKND</b>          | <b>UTTARAKHAND</b>               |
|                      | <b>VID</b>             | <b>VIDHARBHA</b>                 |
|                      | <b>SHWB</b>            | <b>SUB HIMALAYAN WEST BENGAL</b> |
|                      | <b>GWB</b>             | <b>GANGETIC WEST BENGAL</b>      |
|                      | <b>ARSEA</b>           | <b>ARABIAN SEA</b>               |
|                      | <b>ILS</b>             | <b>ISLANDS</b>                   |
| <b>MISCELLANEOUS</b> | <b>ASSW</b>            | <b>IN ASSOCIATION WITH</b>       |
|                      | <b>ASSTD</b>           | <b>ASSOCIATED</b>                |
|                      | <b>LLC</b>             | <b>LOW LEVEL CIRCULATION</b>     |
|                      | <b>EMBDD</b>           | <b>EMBEDDED</b>                  |
|                      | <b>N/HOOD</b>          | <b>NEIGHBOURHOOD</b>             |
|                      | <b>EXT</b>             | <b>EXTREME</b>                   |