



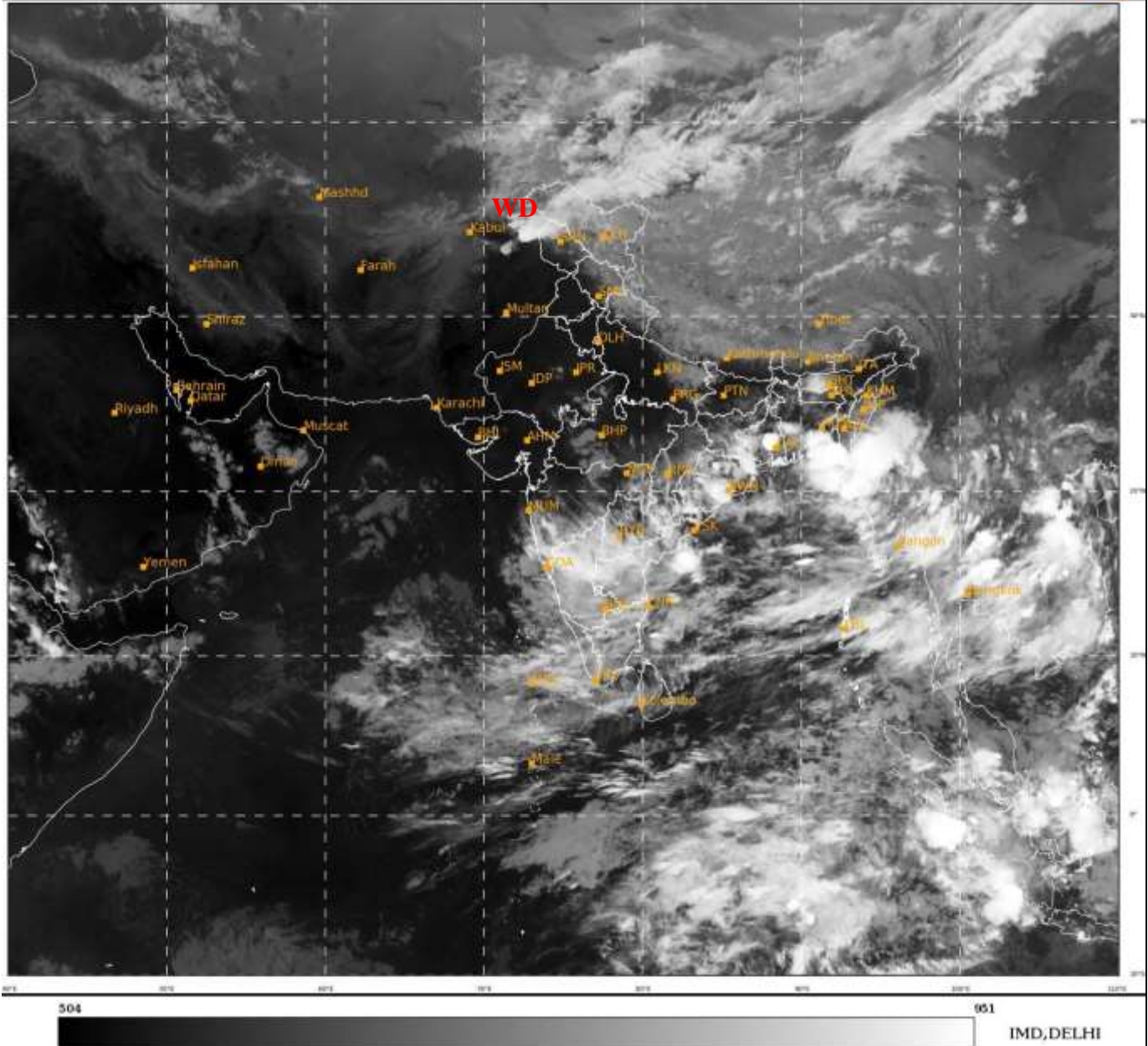
भारत मौसम विज्ञान विभाग
पृथ्वी विज्ञान मंत्रालय
India Meteorological Department
Ministry of Earth Sciences



**SATELLITE BULLETIN BASED ON SATELLITE
IMAGERIES AND PRODUCTS**
01.10.2022 TIME 1500 UTC

SAT : INSAT-3D IMG
IMG_TIR1 10.8 um
LIC Mercator

01-10-2022/(1500 to 1526) GMT
01-10-2022/(2030 to 2056) IST



TCIN50 DEMS 011500

SATELLITE BULLETIN BASED ON INSAT-3D PIC OF 011500 UTC (.)

REGION COVERED BETWEEN LAT 50.0°N TO 35.0°S AND LONG 40.0°E TO 125.0°E (.)

SALIENT FEATURES:-

WESTERN DISTURBANCE (WD):-

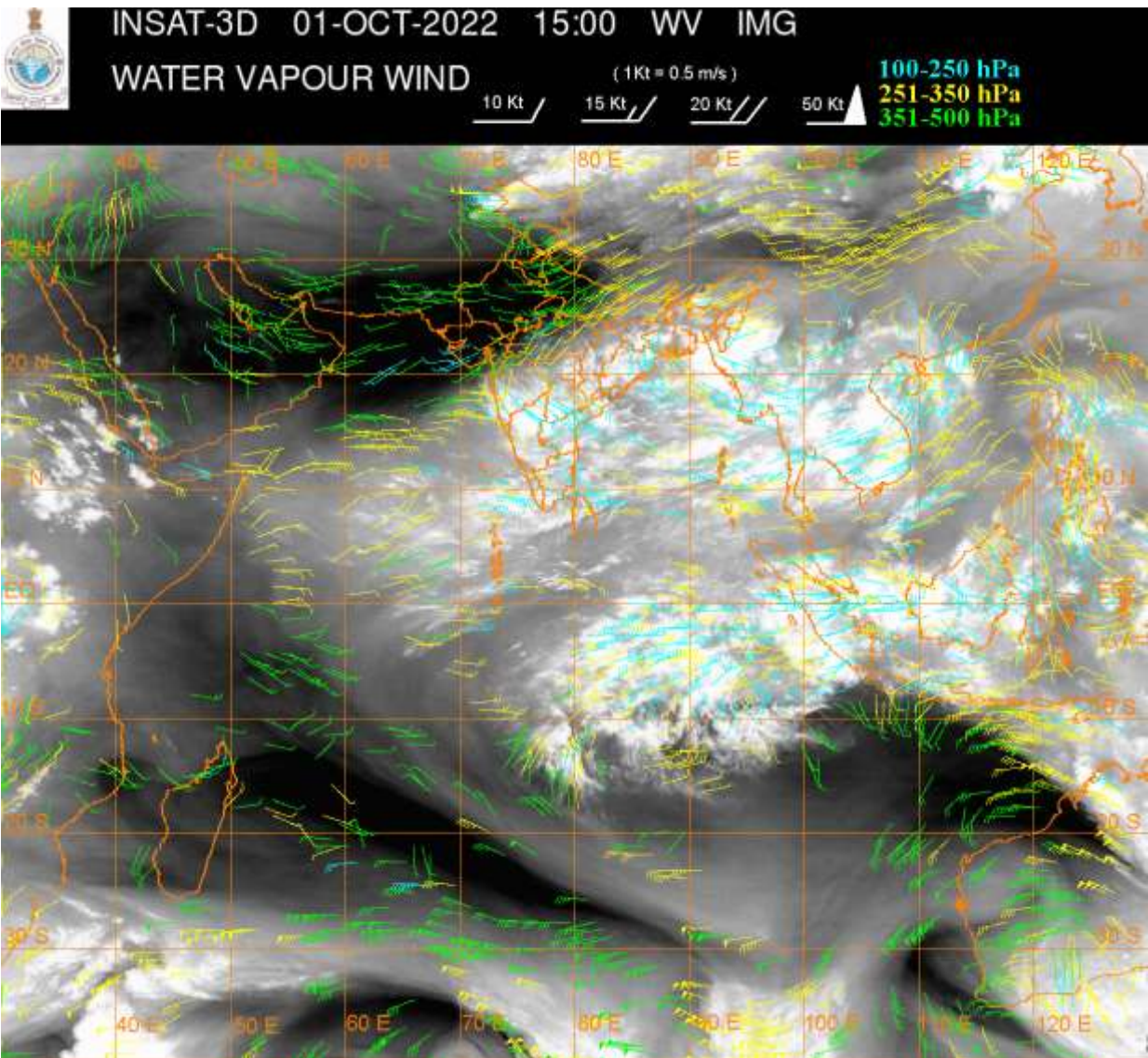
SCT MULTILAYERED CLOUDS OVER N PAK J&K LADAKH TIBET CHINA AND N/HOOD IN ASSW **WD** OVER THE AREA (.)

CONVECTION OVER WC BAY AND N/HOOD:-

INTENSE CONVECTION OVER WC BAY OFF AP COAST & N/HOOD PERSISTS (.) MINIMUM CTT MINUS **93** DEG C (.)

MOD TO INTENSE CONVECTIVE CLOUDS:-

MOD TO INTENSE CONVECTIVE CLOUDS OBSERVED OVER EXT SE JHRKND S CHTGH ORS GWB W MEGHA ADJ ASSAM S MIZO S TRP SOUTH MADHYA MAHA S KKN NIK SIK TLNGN COTL AP RYLSM KER TN ANDAMAN ILS (.)



CLOUDS DESCRIPTION WITHIN INDIA:-

NORTH:-

SCT LOW/MED CLOUDS WITH EMBDD MOD TO INT CONVTN OVER N J&K NW LADAKH (.)
 SCT LOW/MED CLOUDS WITH EMBDD WK CONVTN OVER S J&K REST LADAKH N HP
 UTRKND E UP (.) SCT LOW/MED CLOUDS OVER N HARY NW UP (.)

EAST:-

SCT TO BKN LOW/MED CLOUDS WITH EMBDD INT TO V INT CONVTN OVER S CHTGH
 (MINIMUM CTT MINUS 72 DEG CEL) SE JHRKND ORS C GWB S MIZO S TRP & S BD (MINIMUM
 CTT MINUS 93 DEG CEL) (.) SCT LOW/MED CLOUDS WITH EMBDD MOD TO INT CONVTN
 OVER N CHTGH REST JHRKND REST GWB W ASSAM (.) SCT LOW/MED CLOUDS WITH EMBDD
 WK TO MOD CONVTN OVER W & SE BHR SKM REST NE STATES (.) SCT LOW/MED CLOUDS
 OVER REST BHR SHWB (.)

WEST:-

SCT LOW/MED CLOUDS WITH EMBDD MOD TO INT CONVTN OVER SOUTH MADHYA MAHA S
 KKN VID MRTHWD (.) SCT LOW/MED CLOUDS WITH EMBDD ISOL WK CONVTN OVER RAJ MP
 REST MAHA GOA (.) SCT LOW/MED CLOUDS OVER REST RAJ REST GUJ (.)

SOUTH:-

SCT TO BKN LOW/MED CLOUDS WITH EMBDD INT TO V INT CONVTN OVER NIK S TLNGN N
 SIK N RYLSM N COTL AP (MINIMUM CTT MINUS 73 DEG CEL) (.) SCT TO BKN LOW/MED
 CLOUDS WITH EMBDD MOD TO INT CONVTN OVER SIK N TLNGN S RYLSM KER TN
 ANDAMAN ILS AND WK TO MOD CONVTN OVER COTL KRNTK LKSDP ILS NICOBAR ILS (.)

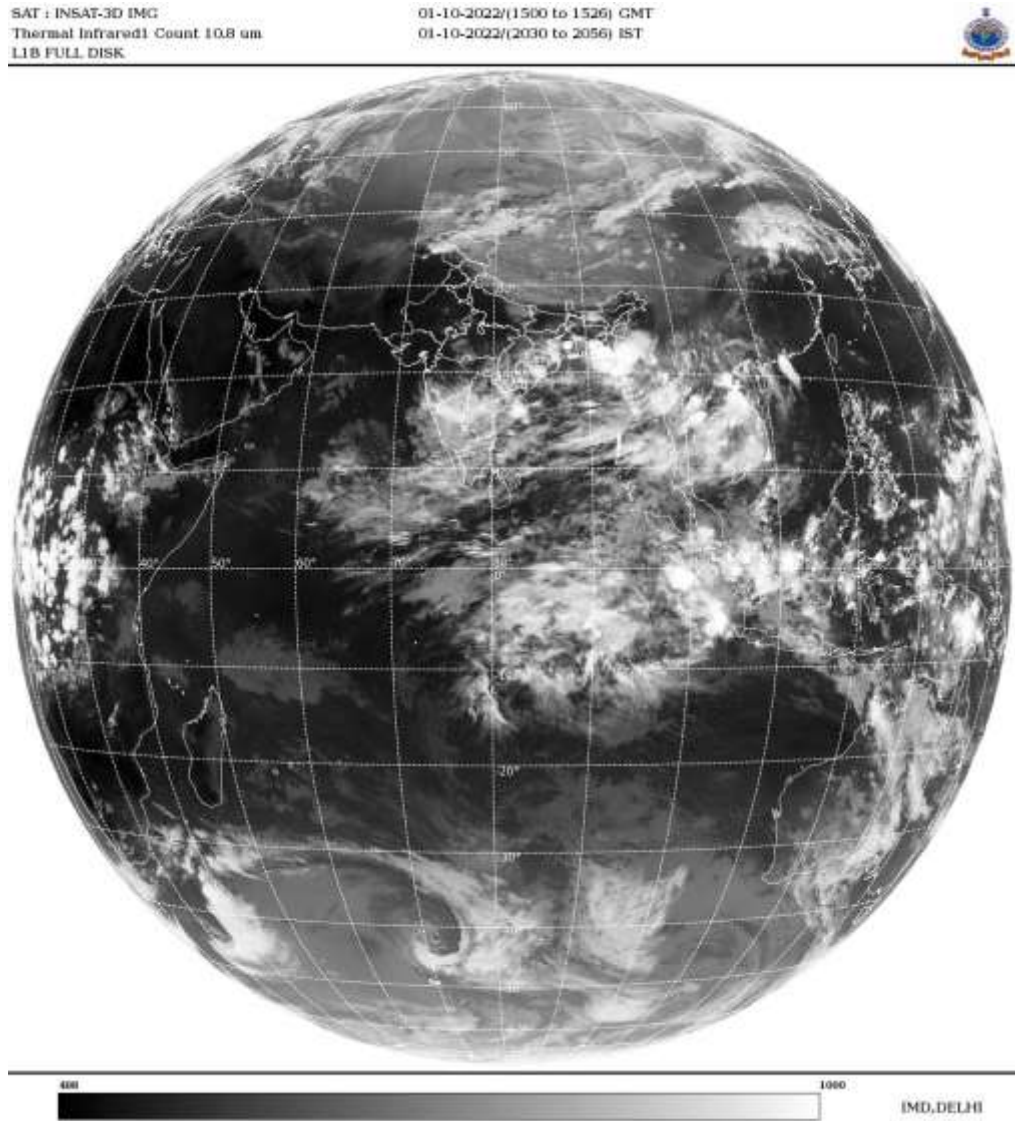
ARABIAN SEA:-

SCT LOW/MED CLOUDS WITH EMBDD MOD TO INT CONVTN OVER EC ARSEA SOUTH ARSEA
 LKSDP ILS AREA AND COMORIN AREA (.) SCT LOW/MED CLOUDS WITH EMBDD ISOL WK TO
 MOD CONVTN OVER WC ARSEA (.)

BAY OF BENGAL & ANDAMAN SEA:-

SCT TO BKN LOW/MED CLOUDS WITH EMBDD INT TO V INT CONVTN OVER BAY ANDAMAN SEA ARAKAN COAST AND GULF OF MARTABAN (.) (.) SCT LOW/MED CLOUDS WITH EMBDD MOD TO INT CONVTN OVER TENASSERIM COAST (.)

CLOUDS DESCRIPTION OUTSIDE INDIA:-



SCT LOW/MED CLOUDS WITH EMBDD MOD TO INT CONVTN OVER SRI LANKA PALK STR GULF OF MANNAR MALDIVES YELLOW SEA TIBET CHINA MYANMAR THAILAND GULF OF THAILAND LAOS VIETNAM GULF OF TONKIN HAINAN SUMATRA STR OF MALACCA MALAYSIA BORNEO SOUTH CHINA SEA JAVA ILS & SEA CELEBES ILS & SEA PHILIPPINES SULU SEA AND OVER INDIAN OCEAN BET LAT 5.0N TO 10.0S LONG 60.0E TO 103.0E AND BET LAT 10.0S TO 16.0S LONG 77.0E TO 100.0E (.)

TOO 01/2140 HRS IST=

NNNN

LEGEND:-

REGION	NORTH	J&K HP PJB HARY DLH UP UTRKND
	EAST	BHR JHRKND CHTGH OR WB SKM NORTH- EAST STATES
	WEST	RAJ MP GUJ MAHA GOA
	SOUTH	TLNGN AP KRNTK KER TN LKSDP ANDAMAN & NICOBAR ILS

CLOUD DISTRIBUTION	ISOL	ISOLATED (LESS THAN 25%)	
	SCT	SCATTERED (25 TO 50%)	
	BKN	BROKEN (51 TO 75%)	
	SLD	SOLID (GREATER THAN 75%)	
CLOUDS TOP TEMPERATURE	CTT	CLOUD TOP TEMPERATURE	
CONVECTION	WK CONVTN	WEAK CONVECTION (CTT GREATER THAN -25°C)	
	MOD CONVTN	MODERATE CONVECTION (CTT BETWEEN -25°C TO -40°C)	
	INT CONVTN	INTENSE CONVECTION (CTT BETWEEN -41°C TO -70°C)	
	V INT CONVTN	VERY INTENSE CONVECTION (CTT LESS THAN -70°C)	
METEOROLOGICAL SUB-DIVISIONS, STATES & UNION TERRITORIES	ARUPR	ARUNACHAL PRADESH	
	BHR	BIHAR	
	CHTGH	CHHATTISGARH	
	COTL AP	COASTAL ANDHRA PRADESH	
	COTL KRNTK	COASTAL KARNATAKA	
	COTL ORS	COASTAL ORISSA	
	GUJ	GUJARAT	
	GWB	GANGETIC WEST BENGAL	
	HARY	HARYANA	
	DLH	DELHI	
	HP	HIMACHAL PRADESH	
	J&K	JAMMU AND KASHMIR	
	JHRKND	JHARKHAND	
	KER	KERALA	
	KKN	KONKAN	
	LKSDP	LAKSHADWEEP	
	M MAHA	MADHYA MAHARASHTRA	
	MAHA	MAHARASHTRA	
	MANI	MANIPUR	
	MEGHA	MEGHALAYA	
	MIZO	MIZORAM	
	MP	MADHYA PRADESH	
		MRTHWD	MARATHWADA
		NAGA	NAGALAND
N COTL AP		NORTH COASTAL ANDHRA PRADESH	
NIK		NORTH INTERIOR KARNATAKA	
ORS		ORISSA	
PJB		PUNJAB	
RAJ		RAJASTHAN	
RYLSM		RAYALASEEMA	
SAU & KUTCH		SAURASHTRA & KUTCH	
SHWB		SUB-HIMALAYAN WEST BENGAL	
SIK		SOUTH INTERIOR KARNATAKA	
SKM		SIKKIM	

	TLNGN	TELANGANA
	TN	TAMIL NADU
	TRP	TRIPURA
	UP	UTTAR PRADESH
	UTRKND	UTTARAKHAND
	VID	VIDHARBHA
	SHWB	SUB HIMALAYAN WEST BENGAL
	GWB	GANGETIC WEST BENGAL
	ARSEA	ARABIAN SEA
	ILS	ISLANDS
MISCELLANEOUS	ASSW	IN ASSOCIATION WITH
	ASSTD	ASSOCIATED
	LLC	LOW LEVEL CIRCULATION
	EMBDD	EMBEDDED
	N/HOOD	NEIGHBOURHOOD
	EXT	EXTREME