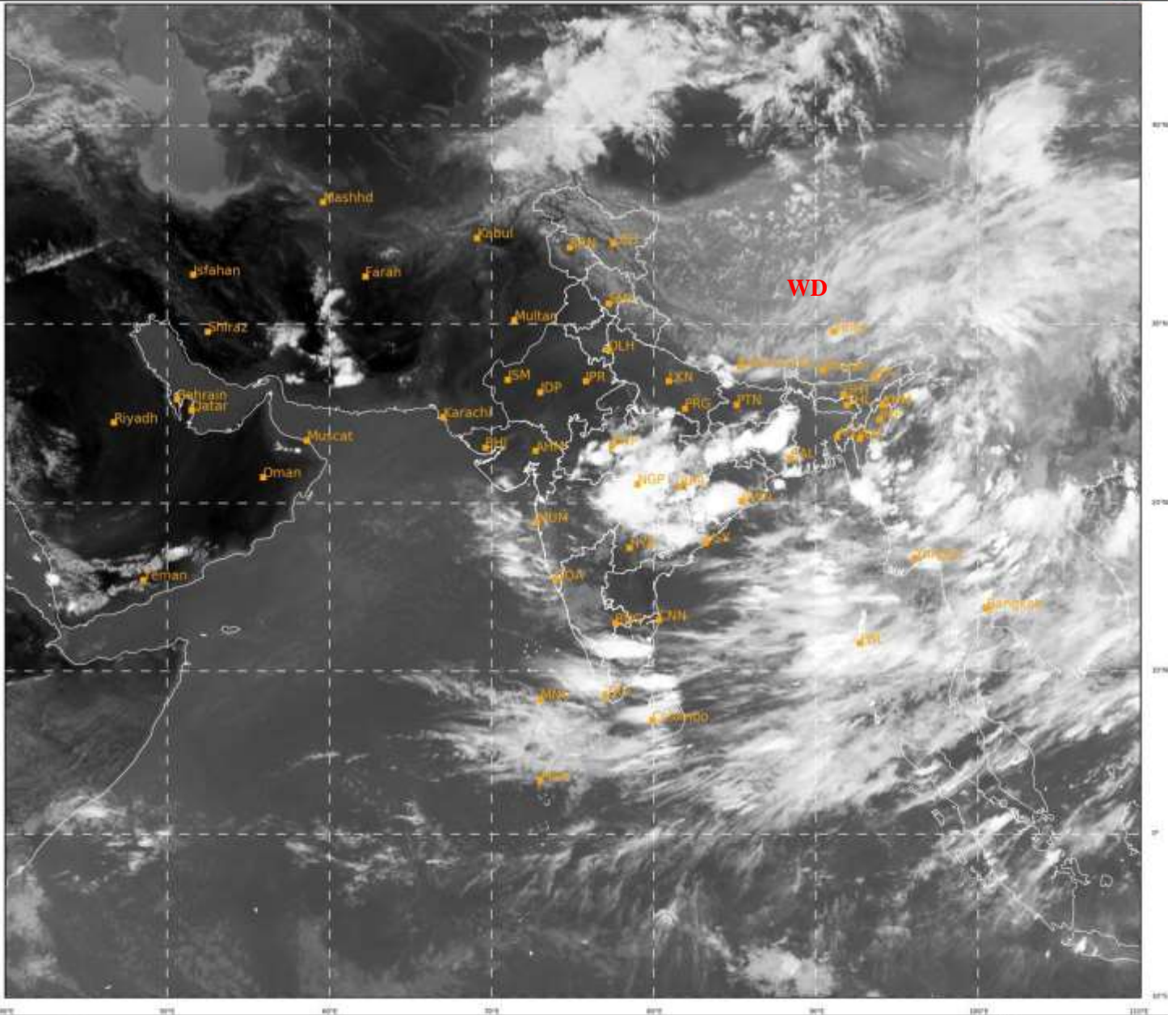




**SATELLITE BULLETIN BASED ON SATELLITE IMAGERIES  
AND PRODUCTS**  
**08.06.2021 TIME 1200 UTC**

SAT : INSAT-3D IMG  
IMG\_TIR1 10.8 um  
LIC Mercator

08-06-2021/(1200 to 1226) GMT  
08-06-2021/(1730 to 1756) IST



286

947

IMD, DELHI

TCIN50 DEMS 081200

SATELLITE BULLETIN BASED ON INSAT-3D PIC OF 081200 UTC (.)

REGION COVERED BETWEEN LAT 50.0°N TO 30.0°S AND LONG 40.0°E TO 125.0°E (.)

**SALIENT FEATURES:-**

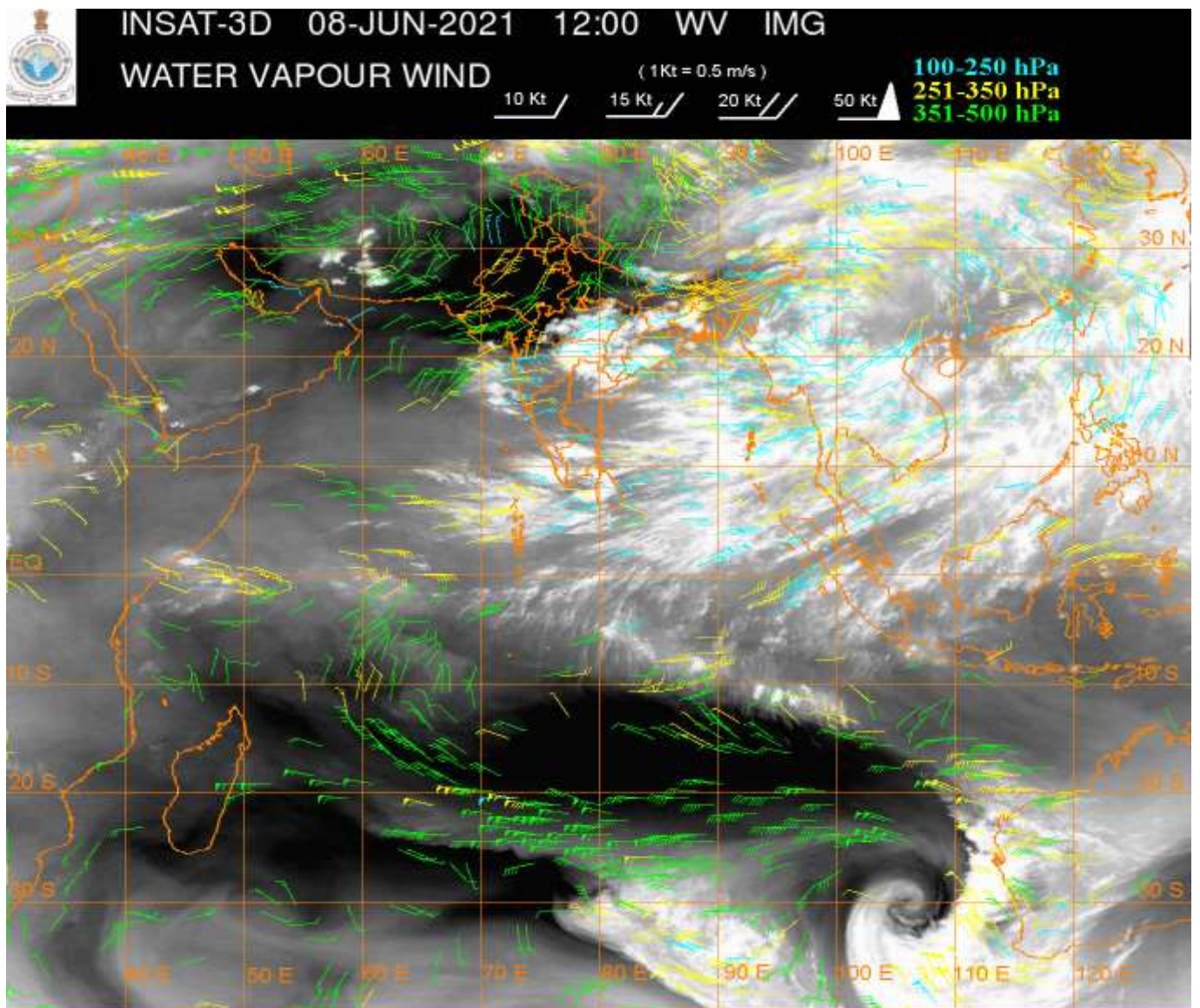
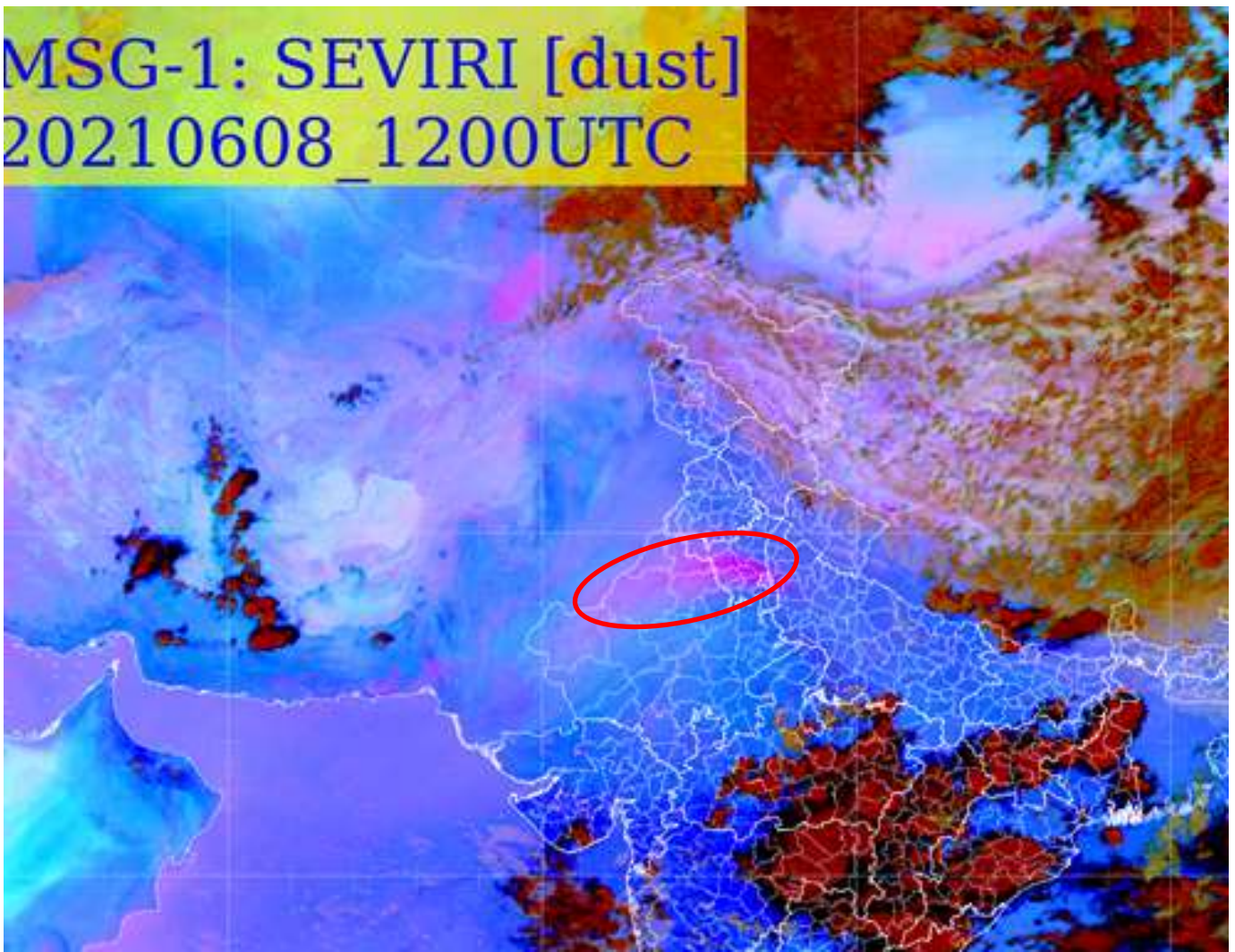
**WESTERN DISTURBANCE (WD):-**

SCT MULTILAYERED CLOUDS OVER E TIBET ADJ CHINA IN ASSW **WD** OVER THE AREA (.)

**DUST:**

METEOSAT-8 RGB DUST PRODUCT AT 1200 UTC INDICATES DUST OVER W RAJ ADJ EXT S PJB  
C HARY DLH EXT WC UP (.)

MSG-1: SEVIRI [dust]  
20210608\_1200UTC



**CLOUDS DESCRIPTION WITHIN INDIA:-**

**NORTH:-**

SCT LOW/MED CLOUDS OVER LADAKH J&K HP UTRKND S UP (.)

**EAST:-**

SCT LOW/MED CLOUDS WITH EMBDD INT TO V INT CONVTN OVER CHTGH C&S ORS JHRKND  
GWB (MIN CTT -93 DEG C) (.) SCT LOW/MED CLOUDS WITH EMBDD MOD TO INT CONVTN  
OVER EXT NW BHR ARUPR (.) SCT LOW/MED CLOUDS WITH EMBDD WK TO MOD CONVTN  
OVER SE BHR SKM NAGA MANI (.) SCT LOW/MED CLOUDS OVER SHWB ASSAM MEGHA TRP  
MIZO (.)

**WEST:-**

SCT LOW/MED CLOUDS WITH EMBDD INT TO V INT CONVTN OVER VID C &E MP (MIN CTT -  
86 DEG C) (.)SCT LOW/MED CLOUDS WITH EMBDD WK TO MOD CONVTN OVER KKN EXT SC  
GUJ (.) SCT LOW/MED CLOUDS OVER REST MAHA REST MP S GUJ (.)

**SOUTH:-**

SCT LOW/MED CLOUDS WITH EMBDD INT TO V INT CONVTN OVER N COTL AP N TLNGN N TN  
C&S KER ANDAMAN & NICOBAR ILS (MINIMUM CTT - 93 DEG C) (.) SCT LOW/MED CLOUDS  
WITH EMBDD MOD TO INT CONVTN OVER S TN (.) SCT LOW/MED CLOUDS OVER KRNTK REST  
TLNGN REST AP REST KER REST TN & LKSDP ILS (.)

**ARABIAN SEA:-**

SCT LOW/MED CLOUDS WITH EMBDD MOD TO INT CONVTN OVER EC ARSEA OFF MAHA  
COAST AND SE ARSEA COMORIN (.)

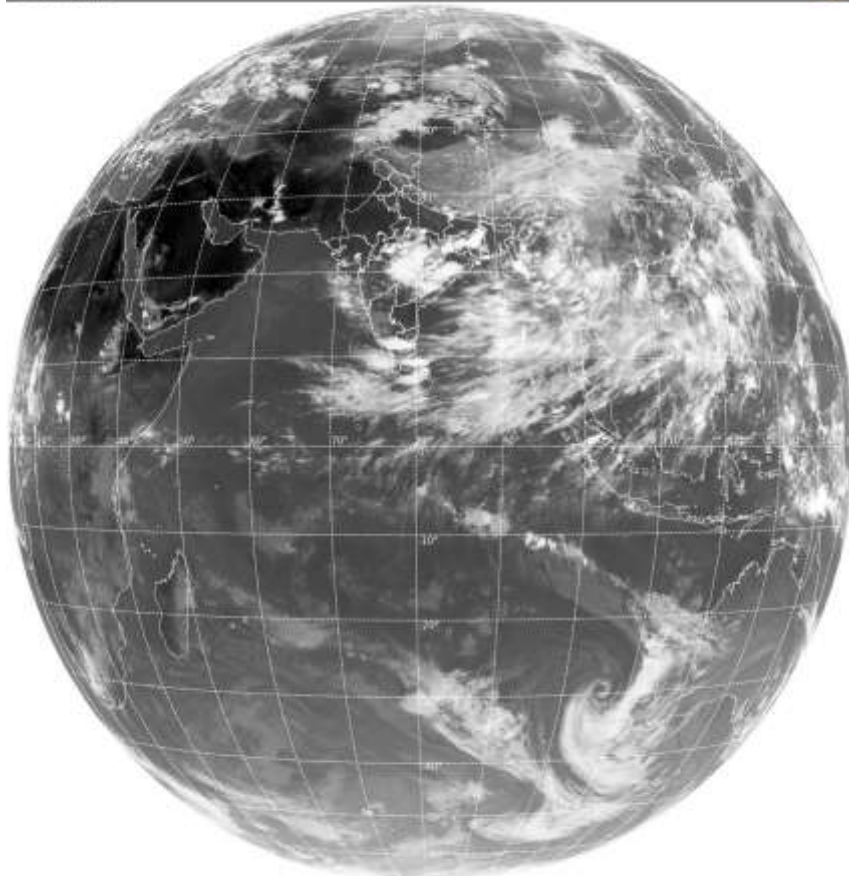
**BAY OF BENGAL & ANDAMAN SEA:-**

SCT LOW/MED CLOUDS WITH EMBDD INT TO V INT CONVTN OVER EC &SE BAY ALSO OVER  
SW BAY AND ANDAMAN SEA (.) SCT LOW/MED CLOUDS WITH EMBDD MOD TO INT CONVTN  
OVER N BAY (.)

**CLOUDS DESCRIPTION OUTSIDE INDIA:-**

SAT : INSAT-3D IMG  
Thermal Infrared1 Coast 10.8 um  
LIB FULL DISK

08-06-2021/(1200 to 1226) GMT  
08-06-2021/(1730 to 1756) IST



**SCT LOW/MED CLOUDS WITH EMBDD MOD TO INT CONVTN OVER S SRI LANKA MALDIVES  
NEPAL BHUTAN TIBET CHINA YELLOW SEA E CHINA SEA TAIWAN MYANMAR THAILAND  
GULF OF THAILAND CAMBODIA LAOS VIETNAM GULF OF TONKIN HAINAN SUMATRA STR  
OF MALACCA MALAY PENINSULA S CHINA SEA CELEBES SEA N BORNEO PHILIPPINES SULU  
SEA AND OVER INDIAN OCEAN BET LAT 5.0N TO 12.5S LONG 80.0E TO 100.0E AND BET EQT TO  
LAT 7.0S LONG 42.0E TO 70.0E (.)**

**TOO 08/1815EF=**

**NNNN**

**LEGEND:-**

|               |              |  |
|---------------|--------------|--|
| <b>REGION</b> | <b>NORTH</b> | <b>J&amp;K HP PJB HARY DLH UP UTRKND</b>                     |
|               | <b>EAST</b>  | <b>BHR JHRKND CHTGH ORS WB SKMNORTH-EAST STATES</b>          |
|               | <b>WEST</b>  | <b>RAJ MP GUJ MAHA GOA</b>                                   |
|               | <b>SOUTH</b> | <b>TLNGN AP KRNTK KER TN LKSDP ANDAMAN &amp; NICOBAR ILS</b> |

|   |                       |   |
|---|-----------------------|---|
| <b>CLOUD DISTRIBUTION</b>   | <b>ISOL</b>           | <b>ISOLATED (LESS THAN 25%)</b>                             |
|   | <b>SCT</b>            | <b>SCATTERED (25 TO 50%)</b>                                |
|   | <b>BKN</b>            | <b>BROKEN (51 TO 75%)</b>                                   |
|   | <b>SLD</b>            | <b>SOLID (GREATER THAN 75%)</b>                             |
| <b>CLOUDS TOP TEMPERATURE</b>                                       | <b>CTT</b>            | <b>CLOUD TOP TEMPERATURE</b>                                |
| <b>CONVECTION</b>   | <b>WK CONVTN</b>      | <b>WEAK CONVECTION<br/>(CTT GREATER THAN -25°C)</b>         |
|   | <b>MOD CONVTN</b>     | <b>MODERATE CONVECTION<br/>(CTT BETWEEN -25°C TO -40°C)</b> |
|   | <b>INT CONVTN</b>     | <b>INTENSE CONVECTION<br/>(CTT BETWEEN -41°C TO -70°C)</b>  |
|   | <b>V INT CONVTN</b>   | <b>VERY INTENSE CONVECTION<br/>(CTT LESS THAN -70°C)</b>    |
| <b>METEOROLOGICAL SUB-DIVISIONS, STATES &amp; UNION TERRITORIES</b> | <b>ARUPR</b>          | <b>ARUNACHAL PRADESH</b>                                    |
|   | <b>BHR</b>            | <b>BIHAR</b>  |
|   | <b>CHTGH</b>          | <b>CHHATTISGARH</b>   |
|   | <b>COTL AP</b>        | <b>COASTAL ANDHRA PRADESH</b>                               |
|   | <b>COTL KRNTK</b>     | <b>COASTAL KARNATAKA</b>                                    |
|   | <b>COTL ORS</b>       | <b>COASTAL ORISSA</b>                                       |
|   | <b>GUJ</b>            | <b>GUJARAT</b>  |
|   | <b>GWB</b>            | <b>GANGETIC WEST BENGAL</b>                                 |
|   | <b>HARY</b>           | <b>HARYANA</b>  |
|   | <b>DLH</b>            | <b>DELHI</b>  |
|   | <b>HP</b>             | <b>HIMACHAL PRADESH</b>                                     |
|   | <b>J&amp;K</b>        | <b>JAMMU AND KASHMIR</b>                                    |
|   | <b>JHRKND</b>         | <b>JHARKHAND</b>  |
|   | <b>KER</b>            | <b>KERALA</b>   |
|   | <b>KKN</b>            | <b>KONKAN</b>   |
|   | <b>LKSDP</b>          | <b>LAKSHADWEEP</b>  |
|   | <b>M MAHA</b>         | <b>MADHYA MAHARASHTRA</b>                                   |
|   | <b>MAHA</b>           | <b>MAHARASHTRA</b>  |
|   | <b>MANI</b>           | <b>MANIPUR</b>  |
|   | <b>MEGHA</b>          | <b>MEGHALAYA</b>  |
| <b>MIZO</b>   | <b>MIZORAM</b>        |   |
| <b>MP</b>   | <b>MADHYA PRADESH</b> |   |

|                      |                        |                                     |
|----------------------|------------------------|-------------------------------------|
|                      | <b>MRTHWD</b>          | <b>MARATHWADA</b>                   |
|                      | <b>NAGA</b>            | <b>NAGALAND</b>                     |
|                      | <b>N COTL AP</b>       | <b>NORTH COASTAL ANDHRA PRADESH</b> |
|                      | <b>NIK</b>             | <b>NORTH INTERIOR KARNATAKA</b>     |
|                      | <b>ORS</b>             | <b>ORISSA</b>                       |
|                      | <b>PJB</b>             | <b>PUNJAB</b>                       |
|                      | <b>RAJ</b>             | <b>RAJASTHAN</b>                    |
|                      | <b>RYLSM</b>           | <b>RAYALASEEMA</b>                  |
|                      | <b>SAU &amp; KUTCH</b> | <b>SAURASHTRA &amp; KUTCH</b>       |
|                      | <b>SHWB</b>            | <b>SUB-HIMALAYAN WEST BENGAL</b>    |
|                      | <b>SIK</b>             | <b>SOUTH INTERIOR KARNATAKA</b>     |
|                      | <b>SKM</b>             | <b>SIKKIM</b>                       |
|                      | <b>TLNGN</b>           | <b>TELANGANA</b>                    |
|                      | <b>TN</b>              | <b>TAMIL NADU</b>                   |
|                      | <b>TRP</b>             | <b>TRIPURA</b>                      |
|                      | <b>UP</b>              | <b>UTTAR PRADESH</b>                |
|                      | <b>UTRKN</b>           | <b>UTTARAKHAND</b>                  |
|                      | <b>VID</b>             | <b>VIDHARBHA</b>                    |
|                      | <b>SHWB</b>            | <b>SUB HIMALAYAN WEST BENGAL</b>    |
|                      | <b>GWB</b>             | <b>GANGETIC WEST BENGAL</b>         |
|                      | <b>ARSEA</b>           | <b>ARABIAN SEA</b>                  |
|                      | <b>ILS</b>             | <b>ISLANDS</b>                      |
| <b>MISCELLANEOUS</b> | <b>ASSW</b>            | <b>IN ASSOCIATION WITH</b>          |
|                      | <b>ASSTD</b>           | <b>ASSOCIATED</b>                   |
|                      | <b>LLC</b>             | <b>LOW LEVEL CIRCULATION</b>        |
|                      | <b>EMBDD</b>           | <b>EMBEDDED</b>                     |
|                      | <b>N/HOOD</b>          | <b>NEIGHBOURHOOD</b>                |
|                      | <b>EXT</b>             | <b>EXTREME</b>                      |