

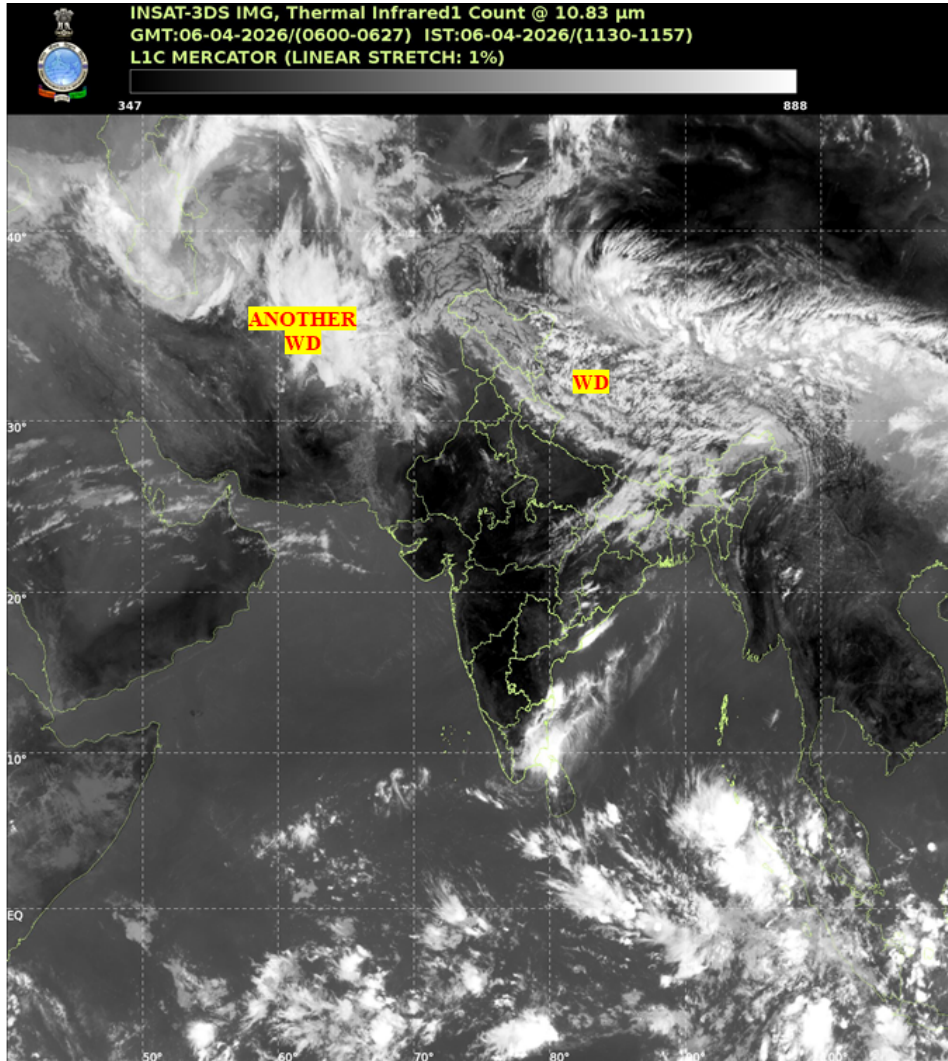


भारत मौसम विज्ञान विभाग
पृथ्वी विज्ञान मंत्रालय
India Meteorological Department
Ministry of Earth Sciences



SATELLITE BULLETIN BASED ON SATELLITE IMAGERIES AND PRODUCTS

Date: 2026-04-06 Time: 06:00:00 UTC



TCIN50 DEMS 060600

SATELLITE BULLETIN BASED ON INSAT-3DS PIC OF 060600 UTC (.)

REGION COVERED BETWEEN LAT 50.0°N TO 35.0°S AND LONG 40.0°E TO 125.0°E (.)

SALIENT FEATURES:

WESTERN DISTURBANCE (WD):-

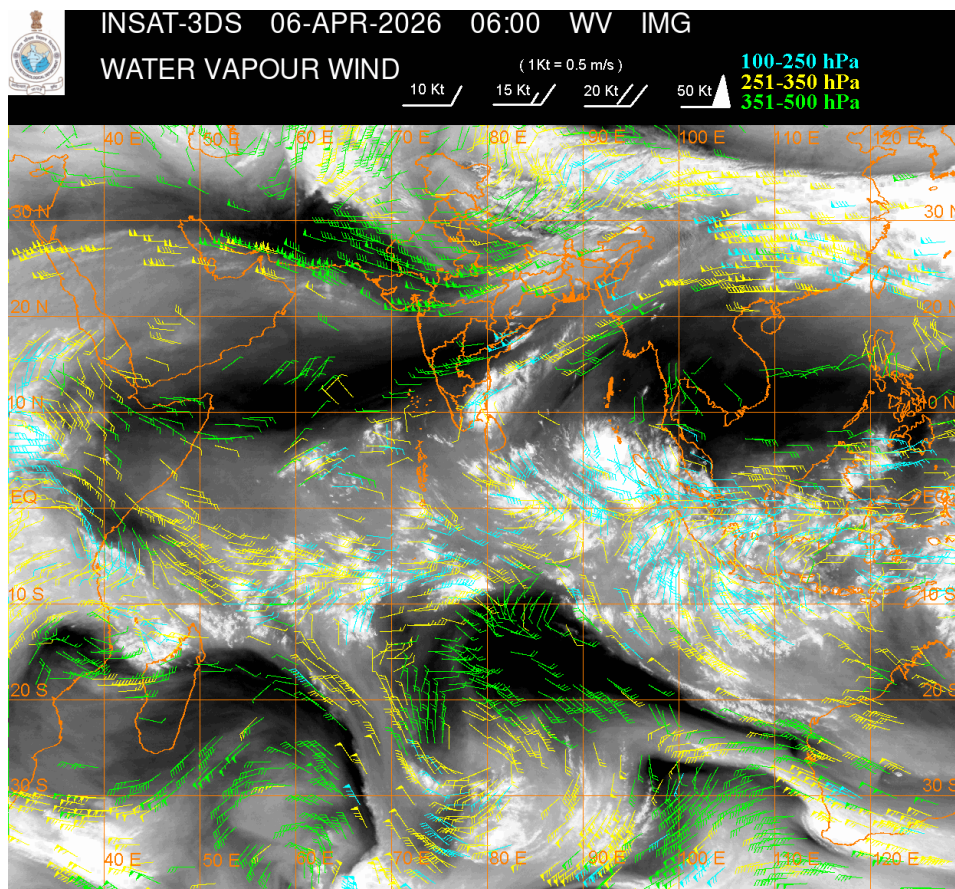
SCT MULTILAYERED CLOUDS OVER TIBET ADJ CHINA IN ASSW WD OVER THE AREA (.)

SCT TO BKN MULTILAYERED CLOUDS OVER CASPIAN SEA NORTH IRAN AFGAN AND N/HOOD IN ASSW ANOTHER WD OVER THE AREA (.)

CONVECTIVE / THUNDERSTORM ACTIVITY:-

INTENSE TO VERY INTENSE CONVECTIVE / THUNDERSTORM ACTIVITY OBSERVED OVER COTL AP TN & NICOBAR ILS AREA (MINIMUM CTT MINUS 70-90 DEGREE CEL) (.)

MODERATE TO INTENSE CONVECTIVE / THUNDERSTORM ACTIVITY OBSERVED OVER SE UP BHR JHRKND GWB SHWB SKM MEGHA ARUPR ASSAM (MINIMUM CTT MINUS 40-60 DEGREE CEL) (.)



CLOUD DESCRIPTION WITHIN INDIA:

NORTH:

SCT LOW/MED CLOUDS WITH EMBDD ISOL WK TO MOD CONVTN OVER LADAKH N HP N UTRKND SE UP (.) SCT LOW/MED CLOUDS OVER J&K S HP S UTRKND SW UP (.)

EAST:

SCT TO BKN LOW/MED CLOUDS WITH EMBDD MOD TO INT CONVTN OVER BHR JHRKND N GWB SHWB SKM ARUPR W ASSAM MEGHA & N BD (.) SCT LOW/MED CLOUDS WITH EMBDD ISOL WK TO MOD CONVTN OVER N CHTGH W ORS (.) SCT LOW/MED CLOUDS OVER S CHTGH E ORS REST NORTH-EAST STATES (.)

WEST:

SCT LOW/MED CLOUDS WITH EMBDD WK TO MOD CONVTN OVER E MP (.) ISOL TO SCT LOW/MED CLOUDS OVER RAJ W MP VID (.)

SOUTH:

SCT TO BKN LOW/MED CLOUDS WITH EMBDD INT TO V INT CONVTN OVER COTL AP TN PALK STRAIT & NICOBAR ILS AREA (.) SCT LOW/MED CLOUDS OVER E TLNGN KER LKSDP ILS & ANDAMAN ILS (.)

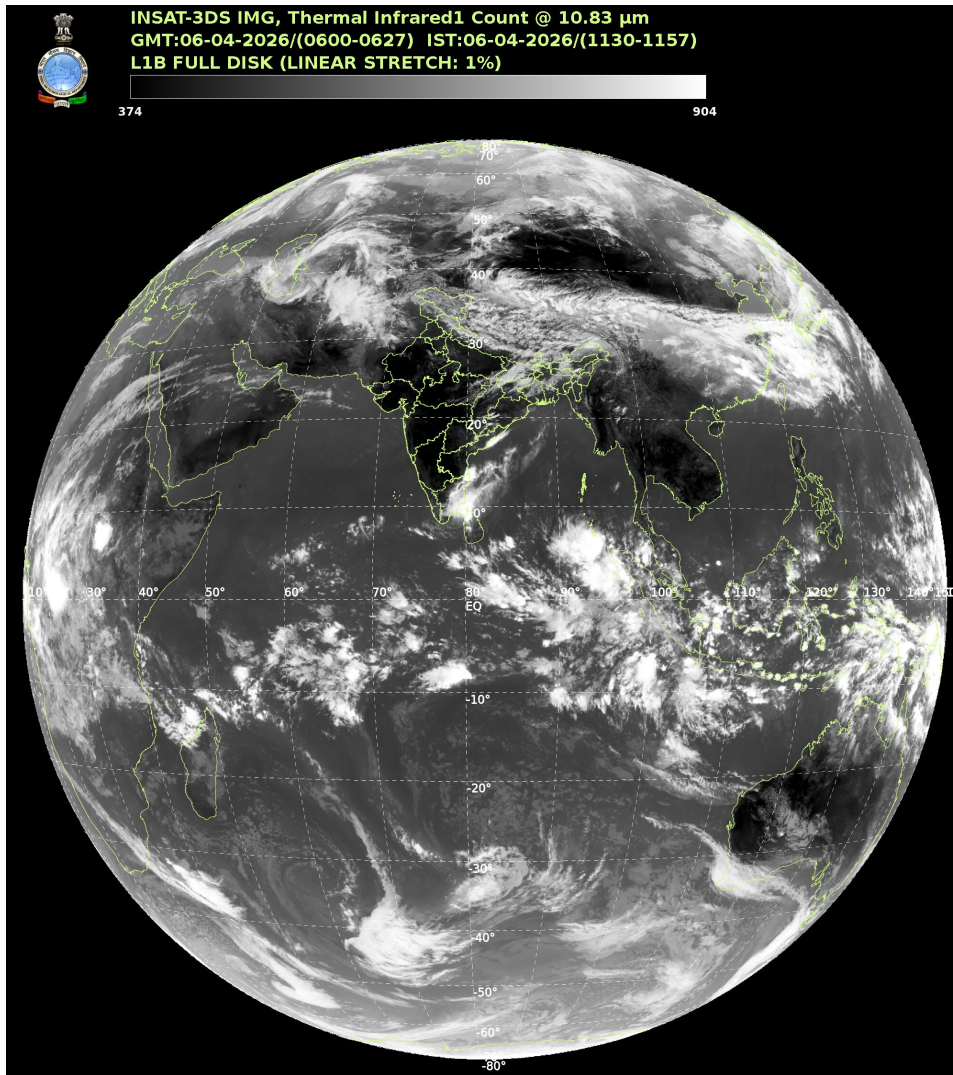
ARABIAN SEA:

SCT LOW/MED CLOUDS WITH EMBDD MOD TO INT CONVTN OVER SOUTH ARSEA SOUTH OF LAT 10.0N AND ISOL WK TO MOD CONVTN OVER NORTH ARSEA & COMORIN AREA (.)

BAY OF BENGAL & ANDAMAN SEA:

SCT TO BKN LOW/MED CLOUDS WITH EMBDD INT TO V INT CONVTN OVER SW BAY OFF TN COAST PALK STRAIT ADJ GULF OF MANNAR N SRILANKA AND ALSO OVER SOUTH BAY SOUTH OF LAT 7.0N & ADJ EQUATORIAL INDIAN OCEAN (.) SCT LOW/MED CLOUDS WITH EMBDD MOD TO INT CONVTN OVER SOUTH ANDAMAN SEA AND ISOL WK TO MOD CONVTN OVER WC & NW BAY (.)

CLOUD DESCRIPTION OUTSIDE INDIA:



SCT LOW/MED CLOUDS WITH EMBDD MOD TO INT CONVTN OVER MALDIVES PAK NEPAL BHUTAN TIBET CHINA YELLOW SEA EAST CHINA SEA TAIWAN EXTREME NORTH MYANMAR SUMATRA STR OF MALACCA MALAYSIA BORNEO SOUTH CHINA SEA JAVA ILS & SEA CELEBES ILS & SEA NORTH MADAGASCAR NORTH MOZAMBIQUE CHANNEL AND OVER INDIAN OCEAN BET LAT 5.0N TO 20.0S LONG 40.0E TO 120.0E AND BET LAT 20.0S TO LAT 35.0S LONG 60.0E TO 90.0E (.)

T00 06/1210 HRS IST

NNNN

LEGEND

REGION	
NORTH	J&K HP UTRKND PJB HARY DLH UP

EAST	BHR JHRKND CHTGH ORS WB SKM NORTH-EAST STATES
WEST	RAJ MP GUJ MAHA GOA
SOUTH	TLNGN AP KRNTK KER TN LKSDP ANDAMAN & NICOBAR ILS
CLOUD DISTRIBUTION	
ISOL	ISOLATED (LESS THAN 25%)
SCT	SCATTERED (25 TO 50%)
BKN	BROKEN (51 TO 75%)
SLD	SOLID (GREATER THAN 75%)
CLOUDS TOP TEMPERATURE	
CTT	CLOUD TOP TEMPERATURE
CONVECTION	
WK CONVTN	WEAK CONVECTION (CTT GREATER THAN -25°C)
MOD CONVTN	MODERATE CONVECTION (CTT BETWEEN -25°C TO -40°C)
INT CONVTN	INTENSE CONVECTION (CTT BETWEEN -41°C TO -70°C)
V INT CONVTN	VERY INTENSE CONVECTION (CTT LESS THAN -70°C)
METEOROLOGICAL SUB-DIVISIONS, STATES & UNION TERRITORIES	
J&K	JAMMU AND KASHMIR
HP	HIMACHAL PRADESH
UTRKND	UTTARAKHAND
PJB	PUNJAB
HARY	HARYANA
DLH	DELHI
BHR	BIHAR
JHRKND	JHARKHAND
CHTGH	CHHATTISGARH
ORS	ORISSA
GWB	GANGETIC WEST BENGAL
SHWB	SUB-HIMALAYAN WEST BENGAL
SKM	SIKKIM
ARUPR	ARUNACHAL PRADESH
ASSAM	ASSAM
MEGHA	MEGHALAYA
MANI	MANIPUR
MIZO	MIZORAM

TRP	TRIPURA
RAJ	RAJASTHAN
MP	MADHYA PRADESH
GUJ	GUJARAT
SAU & KUTCH	SAURASHTRA & KUTCH
MAHA	MAHARASHTRA
M MAHA	MADHYA MAHARASHTRA
MRTHWD	MARATHWADA
VID	VIDARBHA
KKN	KONKAN
TLNGN	TELANGANA
RYLSM	RAYALSEEMA
COTL AP	COASTAL ANDHRA PRADESH
NIK	NORTH INTERIOR KARNATAKA
SIK	SOUTH INTERIOR KARNATAKA
COTL KRNTK	COASTAL KARNATAKA
KER	KERALA
TN	TAMILNADU
LKSDP	LAKSHADWEEP
ILS	ISLANDS
ARSEA	ARABIAN SEA
MISCELLANEOUS	
ASSW	IN ASSOCIATION WITH
ASSTD	ASSOCIATED
LLC	LOW LEVEL CIRCULATION
EMBDD	EMBEDDED
N/HOOD	NEIGHBOURHOOD
EXT	EXTREME