



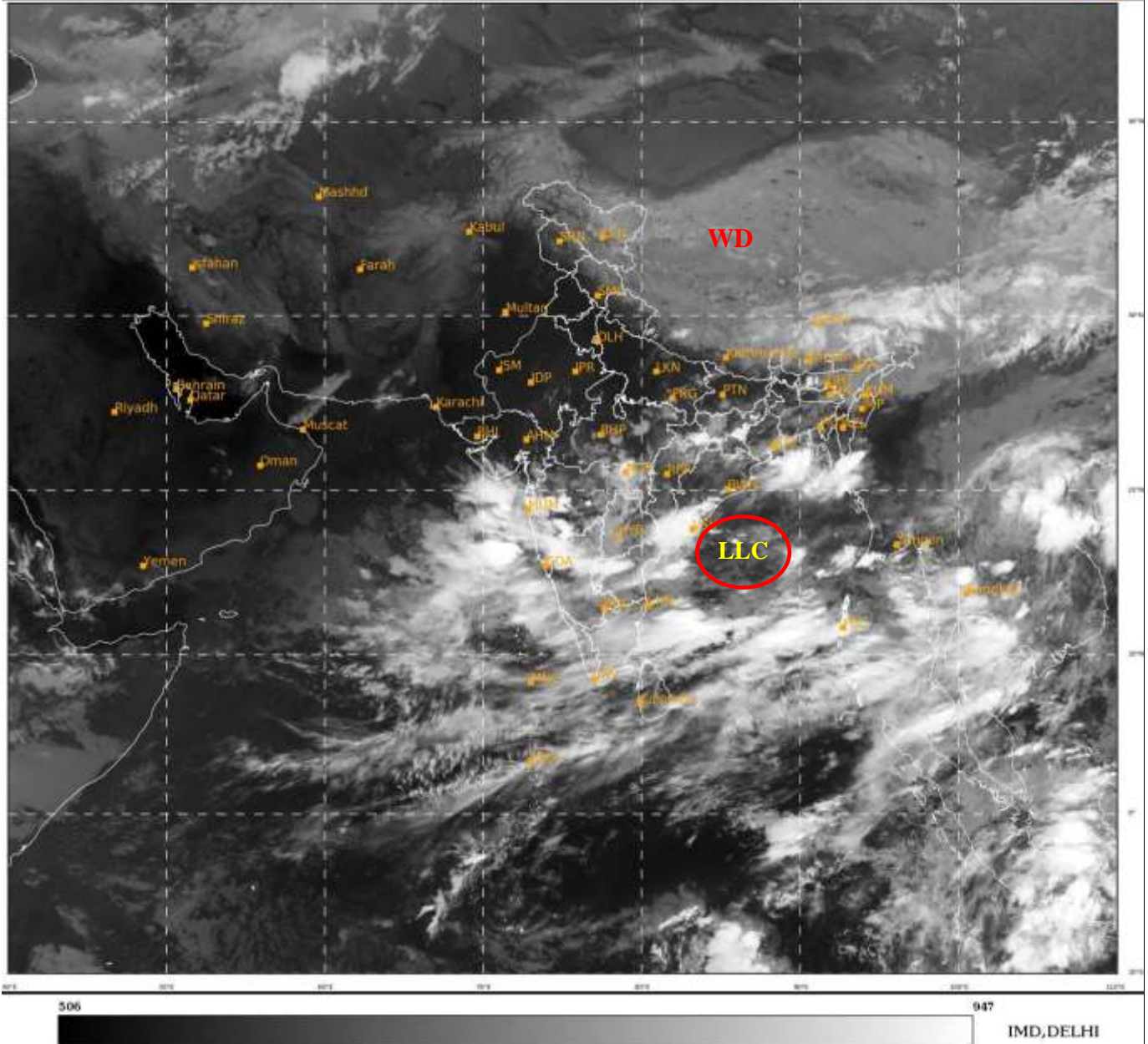
भारत मौसम विज्ञान विभाग
पृथ्वी विज्ञान मंत्रालय
India Meteorological Department
Ministry of Earth Sciences



**SATELLITE BULLETIN BASED ON SATELLITE
IMAGERIES AND PRODUCTS**
07.09.2022 TIME 2100 UTC

SAT : INSAT-3D IMG
IMG_TIR1 10.8 um
LIC Mercator

07-09-2022/(2130 to 2156) GMT
08-09-2022/(0300 to 0326) IST



TCIN50 DEMS 072100

SATELLITE BULLETIN BASED ON INSAT-3D PIC OF 072130 UTC (.)

REGION COVERED BETWEEN LAT 50.0°N TO 30.0°S AND LONG 40.0°E TO 125.0°E (.)

SALIENT FEATURES:-

WESTERN DISTURBANCE:-

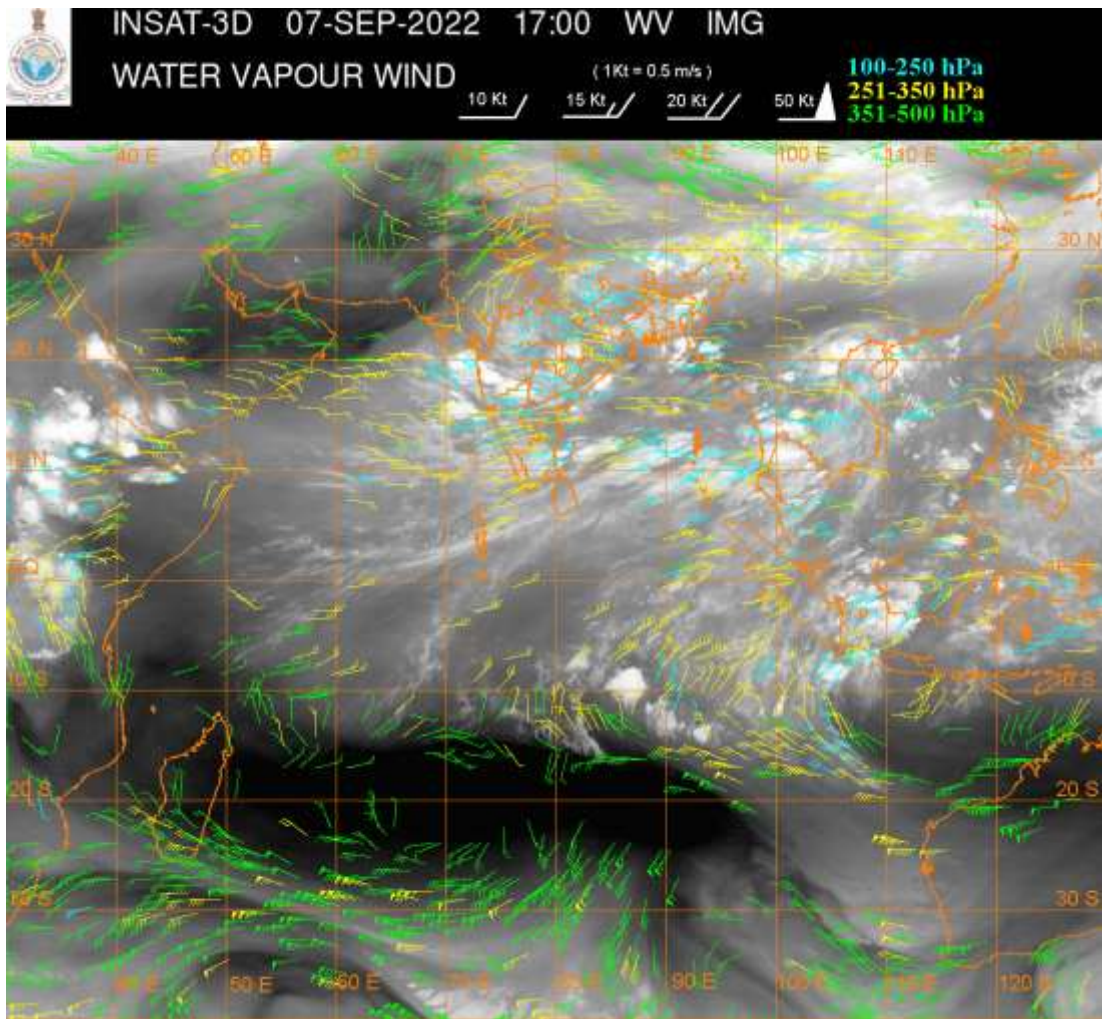
SCT MULTILAYERED CLOUDS OVER TIBET ADJ CHINA IN ASSW **WD** OVER THE AREA (.)

LOW LEVEL CIRCULATION (LLC) OVER EAST-CENTRAL BAY :-

LOW LEVEL CIRCULATION (LLC) OVER EAST-CENTRAL BAY (.) ASSTD BKN LOW/MED CLOUDS WITH EMBDD INT TO V INT CONVTN OVER NORTH BAY & SOUTH BAY (.) (MINIMUM CTT MINUS 93 DEG CEL) (.)

INTENSE CONVECTIVE CLOUDS :-

INTENSE CONVECTIVE CLOUDS OBSERVED OVER E JHRKND N CHTGH S ORS WC GWB W ASSAM N KKN SOUTH MADHYA MAHA N COTL AP N RYLSM NIK (.)



CLOUDS DESCRIPTION WITHIN INDIA:-

NORTH:-

SCT LOW/MED CLOUDS WITH EMBDD WK CONV TN OVER LADAKH NE HP NE UTRKND E UP
(.) SCT LOW/MED CLOUDS OVER J&K REST HP REST UTRKND C UP (.)

EAST:-

SCT LOW/MED CLOUDS WITH EMBDD INT TO V INT CONV TN OVER E JHRKND EXT N CHTGH
S ORS WC GWB W ASSAM (MINIMUM CTT MINUS 89 DEG CEL) (.) SCT LOW/MED CLOUDS
WITH EMBDD MOD TO INT CONV TN OVER S JHRKND S CHTGH NE ORS S GWB E ARUPR & S
BD AND ISOL WK TO MOD CONV TN OVER W & S BHR REST JHRKND REST CHTGH REST ORS
REST GWB SHWB SKM REST ASSAM MEGHA REST ARUPR NAGA W MANI TRP S MIZO (.) SCT
LOW/MED CLOUDS OVER REST BHR E MANI N MIZO (.)

WEST:-

SCT LOW/MED CLOUDS WITH EMBDD INT TO V INT CONV TN OVER SOUTH MADHYA MAHA
N KKN (MINIMUM CTT MINUS 93 DEG CEL) (.) SCT LOW/MED CLOUDS WITH EMBDD MOD TO
INT CONV TN OVER SE MP S GUJ REST MAHA AND WK TO MOD CONV TN OVER SE RAJ REST
MP NE GUJ GOA (.) SCT LOW/MED CLOUDS OVER REST RAJ (.)

SOUTH:-

SCT LOW/MED CLOUDS WITH EMBDD INT TO V INT CONV TN OVER S NIK N RYLSM N COTL
AP (MINIMUM CTT MINUS 74 DEG CEL) (.) SCT TO BKN LOW/MED CLOUDS WITH EMBDD
MOD TO INT CONV TN OVER REST KRNTK REST COTL AP TLNGN S RYLSMA KER TN LKSDP
ILS ANDAMAN & NICOBAR ILS (.)

ARABIAN SEA:-

SCT TO BKN LOW/MED CLOUDS WITH EMBDD INT TO V INT CONV TN OVER SOUTH PARTS
OF NE ARSEA & EC ARSEA (.) SCT TO BKN LOW/MED CLOUDS MOD TO INT CONV TN OVER
SOUTH ARSEA LKSDP ILS AREA AND COMORIN AREA (.)

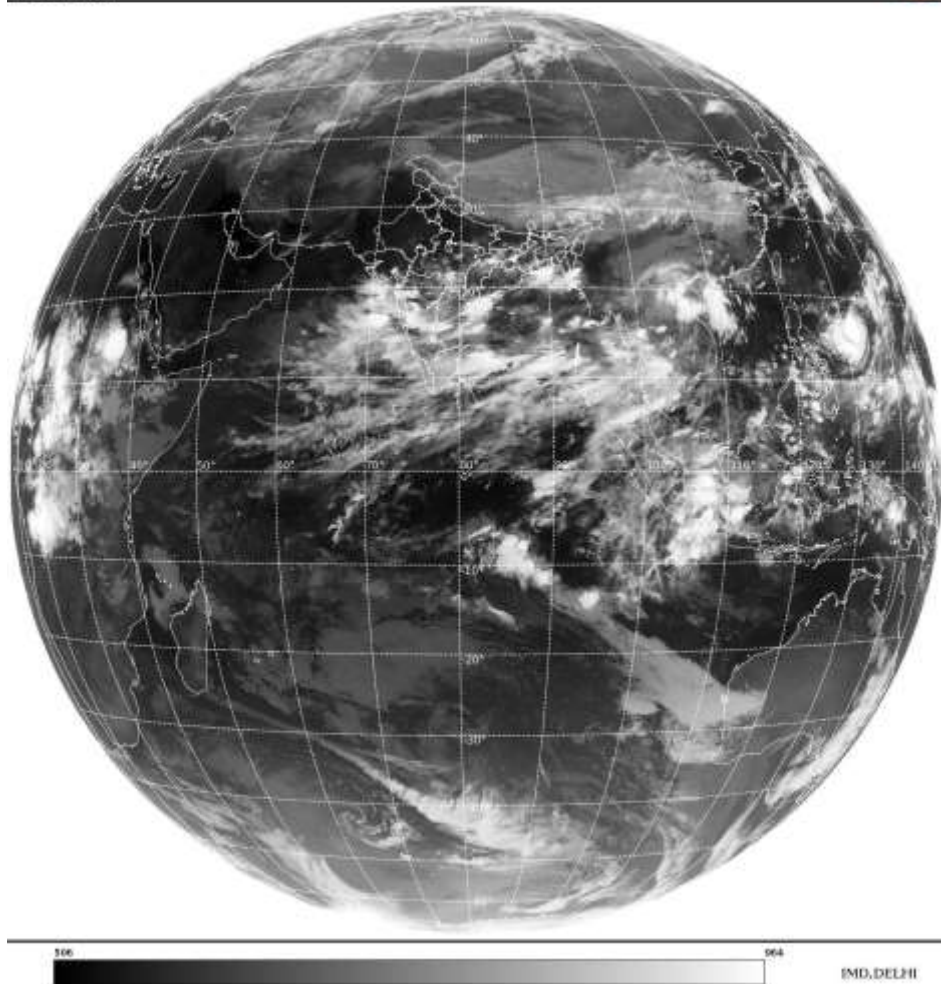
BAY OF BENGAL & ANDAMAN SEA:-

SCT TO BKN LOW/MED CLOUDS WITH EMBDD INT TO V INT CONV TN OVER BAY &
ANDAMAN SEA TENASSERI COAST (.)

CLOUDS DESCRIPTION OUTSIDE INDIA:-

SAT : INSAT-3D IMG
Thermal Infrared Count 10.8 um
LIB FULL DISK

07-09-2022/(2130 to 2156) GMT
08-09-2022/(0300 to 0326) IST



SCT LOW/MED CLOUDS WITH EMBDD MOD TO INT CONVTN OVER SRI LANKA PALK STR GULF OF MANNAR NEPAL BHUTAN TIBET CHINA S MYANMAR THAILAND GULF OF THAILAND CAMBODIA LAOS VIETNAM SUMATRA STR OF MALACCA MALAYSIA BORNEO SOUTH CHINA SEA JAVA ILS CELEBES ILS & SEA PHILIPPINES E CHINA SEA GULF OF TONKIN HAINAN AND OVER INDIAN OCEAN BET LAT 5.0N TO 16.5S LONG 60.0E TO 109.0E (.)

TOO 08/0435 HRS IST=

NNNN

LEGEND:-

REGION	NORTH	J&K HP PJB HARY DLH UP UTRKND
	EAST	BHR JHRKND CHTGH OR WB SKM NORTH- EAST STATES
	WEST	RAJ MP GUJ MAHA GOA
	SOUTH	TLNGN AP KRNTK KER TN LKSDP ANDAMAN & NICOBAR ILS

CLOUD DISTRIBUTION	ISOL	ISOLATED (LESS THAN 25%)	
	SCT	SCATTERED (25 TO 50%)	
	BKN	BROKEN (51 TO 75%)	
	SLD	SOLID (GREATER THAN 75%)	
CLOUDS TOP TEMPERATURE	CTT	CLOUD TOP TEMPERATURE	
CONVECTION	WK CONVTN	WEAK CONVECTION (CTT GREATER THAN -25°C)	
	MOD CONVTN	MODERATE CONVECTION (CTT BETWEEN -25°C TO -40°C)	
	INT CONVTN	INTENSE CONVECTION (CTT BETWEEN -41°C TO -70°C)	
	V INT CONVTN	VERY INTENSE CONVECTION (CTT LESS THAN -70°C)	
METEOROLOGICAL SUB-DIVISIONS, STATES & UNION TERRITORIES	ARUPR	ARUNACHAL PRADESH	
	BHR	BIHAR	
	CHTGH	CHHATTISGARH	
	COTL AP	COASTAL ANDHRA PRADESH	
	COTL KRNTK	COASTAL KARNATAKA	
	COTL ORS	COASTAL ORISSA	
	GUJ	GUJARAT	
	GWB	GANGETIC WEST BENGAL	
	HARY	HARYANA	
	DLH	DELHI	
	HP	HIMACHAL PRADESH	
	J&K	JAMMU AND KASHMIR	
	JHRKND	JHARKHAND	
	KER	KERALA	
	KKN	KONKAN	
	LKSDP	LAKSHADWEEP	
	M MAHA	MADHYA MAHARASHTRA	
	MAHA	MAHARASHTRA	
	MANI	MANIPUR	
	MEGHA	MEGHALAYA	
	MIZO	MIZORAM	
	MP	MADHYA PRADESH	
		MRTHWD	MARATHWADA
		NAGA	NAGALAND
N COTL AP		NORTH COASTAL ANDHRA PRADESH	
NIK		NORTH INTERIOR KARNATAKA	
ORS		ORISSA	
PJB		PUNJAB	
RAJ		RAJASTHAN	
RYLSM		RAYALASEEMA	
SAU & KUTCH		SAURASHTRA & KUTCH	
SHWB		SUB-HIMALAYAN WEST BENGAL	
SIK		SOUTH INTERIOR KARNATAKA	
SKM		SIKKIM	

	TLNGN	TELANGANA
	TN	TAMIL NADU
	TRP	TRIPURA
	UP	UTTAR PRADESH
	UTRKND	UTTARAKHAND
	VID	VIDHARBHA
	SHWB	SUB HIMALAYAN WEST BENGAL
	GWB	GANGETIC WEST BENGAL
	ARSEA	ARABIAN SEA
	ILS	ISLANDS
MISCELLANEOUS	ASSW	IN ASSOCIATION WITH
	ASSTD	ASSOCIATED
	LLC	LOW LEVEL CIRCULATION
	EMBDD	EMBEDDED
	N/HOOD	NEIGHBOURHOOD
	EXT	EXTREME