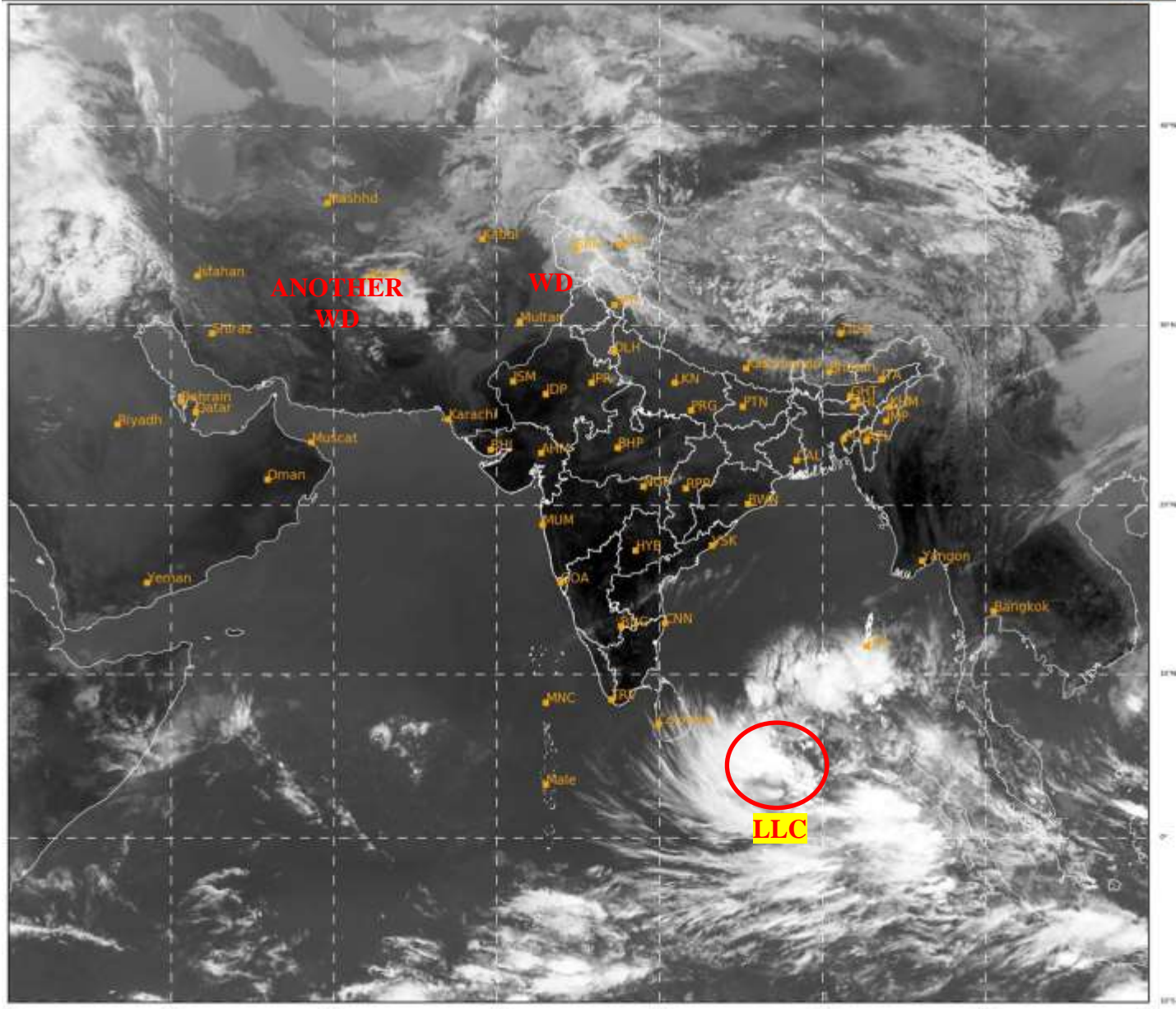




**SATELLITE BULLETIN BASED ON SATELLITE  
IMAGERIES AND PRODUCTS**  
**01.03.2022 TIME 0600 UTC**

SAT : INSAT-3D IMG  
IMG\_TIR1 10.8 um  
L1C Mercator

01-03-2022/(0600 to 0627) GMT  
01-03-2022/(1130 to 1157) IST



359

928

IMD, DELHI

TCIN50 DEMS 010600

SATELLITE BULLETIN BASED ON INSAT-3D PIC OF 010600 UTC (.)

REGION COVERED BETWEEN LAT 50.0°N TO 30.0°S AND LONG 40.0°E TO 125.0°E (.)

**SALIENT FEATURES:-**

**WESTERN DISTURBANCE (WD):-**

SCT MULTILAYERED CLOUDS OVER EXT N PAK J&K LADAKH HP N PJB UTRKND TIBET ADJ CHINA IN ASSW **WD** OVER THE AREA (.)

SCT MULTILAYERED CLOUDS OVER E IRAN W AFGAN AND N/HOOD IN ASSW **ANOTHER WD** OVER THE AREA (.)

**LLC OVER SE BAY ADJ EQUATORIAL INDIAN OCEAN:-**

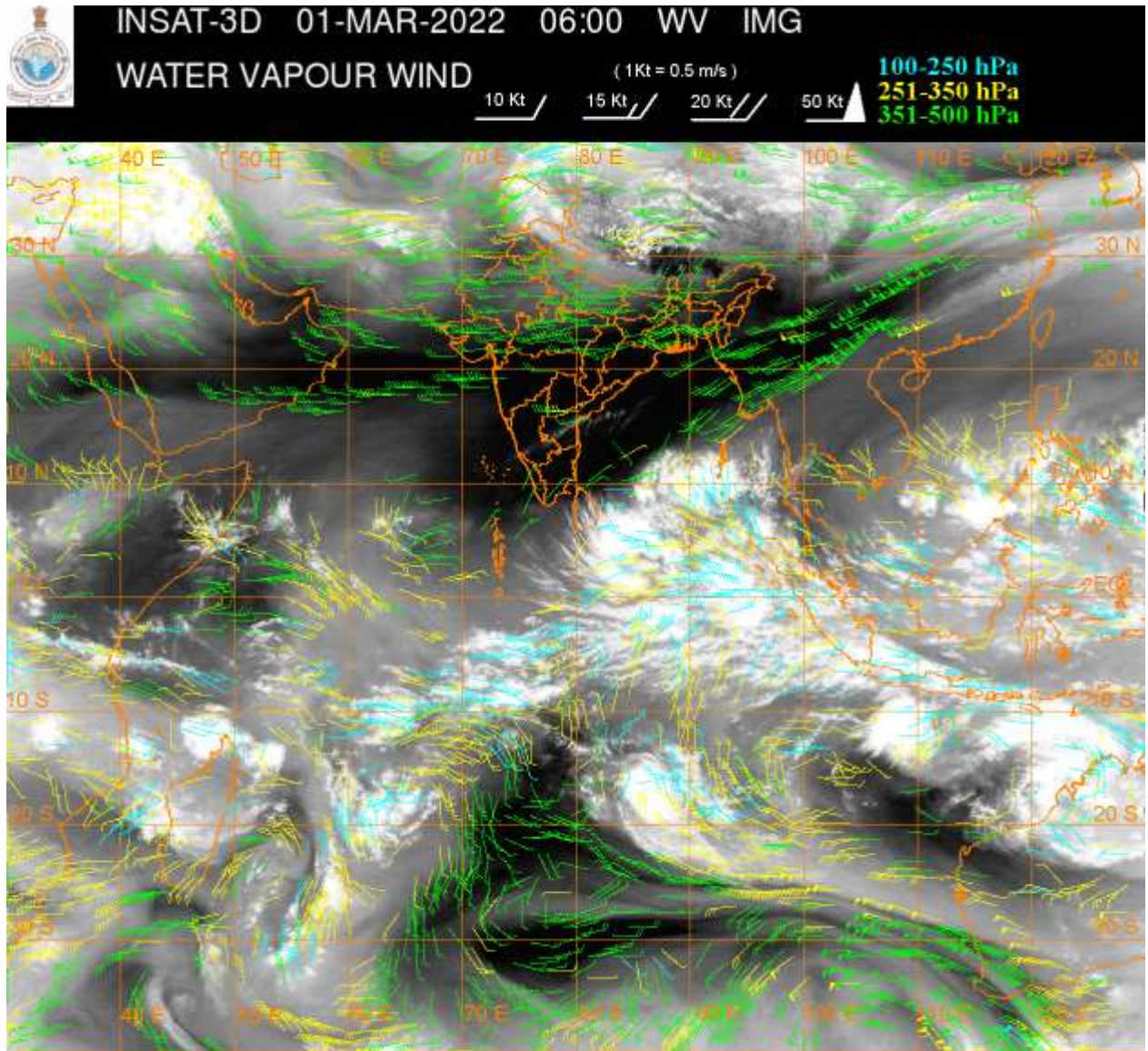
SCT TO BKN LOW/MED CLOUDS WITH EMBDD INTENSE TO VERY INTENSE CONVTN OVER SE BAY ADJ EQUATORIAL INDIAN OCEAN BET EQ TO LAT 10.0N AND LONG 83.0E TO 90.0E IN ASSW **LLC** OVER THE AREA (.) MINIMUM CTT MINUS **90** DEG C (.)



**PRECIPITATION NOWCASTING (BASED ON SCOPE NOWCASTING):**

**5 – 12 MM OBSERVED OVER SE J&K.**

**0.25 – 5 MM OBSERVED OVER NW LADAKH N J&K N HP S ANDAMAN & NICOBAR ILS (.)**



**CLOUDS DESCRIPTION WITHIN INDIA:-**

**NORTH:-**

SCT LOW/MED CLOUDS WITH EMBDD MOD TO INT CONVTN OVER LADAKH E J&K NW HP (.)  
SCT LOW/MED CLOUDS WITH EMBDD WK TO MOD CONVTN OVER W J&K REST HP UTRKND  
N PJB EXT N HARY WC UP (.) SCT LOW/MED CLOUDS OVER EXT SE PJB EXT N HARY (.)

**EAST:-**

SCT LOW/MED CLOUDS WITH EMBDD WK CONVTN OVER SKM ARUPR (.) ISOL TO SCT  
LOW/MED CLOUDS OVER JHRKND CHTGH ORS C GWB N SHWB REST NE STATES (.)

**WEST:-**

SCT LOW/MED CLOUDS OVER E RAJ MRTHWD VID (.)

**SOUTH:-**

SCT LOW/MED CLOUDS WITH EMBDD MOD TO INT CONVTN OVER ANDAMAN & NICOBAR ILS  
(.) SCT LOW/MED CLOUDS OVER SIK S RYLSM S COTL AP KER W TN (.)

**ARABIAN SEA:-**

SCT LOW/MED CLOUDS WITH EMBDD MOD TO INT CONVTN OVER SW AND SC ARSEA SOUTH  
OF LAT 8.5N (.)

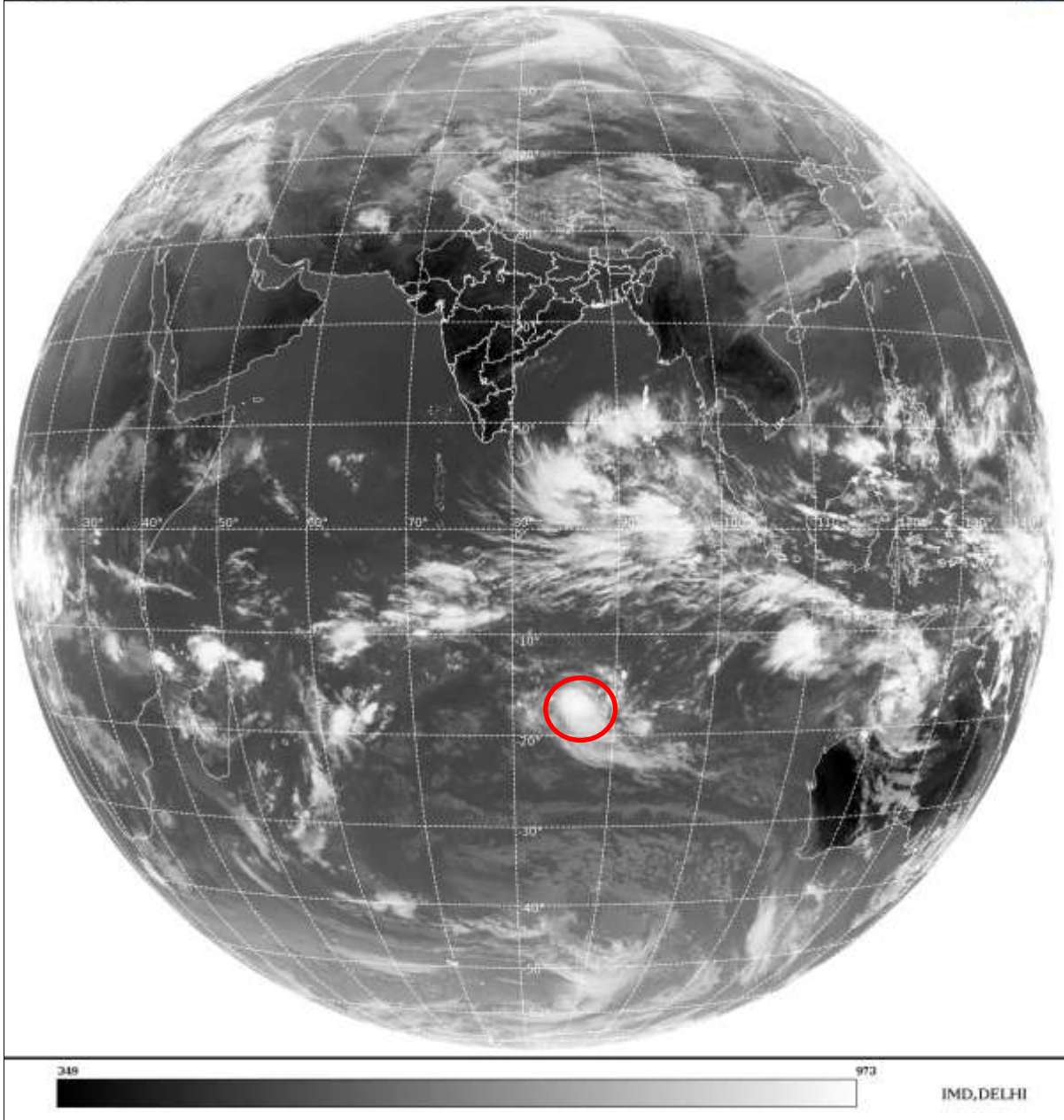
**BAY OF BENGAL & ANDAMAN SEA:-**

SCT TO BKN LOW/MED CLOUDS WITH EMBDD INT TO V INT CONVTN OVER SOUTH BAY ADJ  
EQUATORIAL INDIAN OCEAN AND CENTRAL PARTS OF ANDAMAN SEA (MINIMUM CTT  
MINUS 90 DEG C) (.) SCT LOW/MED CLOUDS WITH EMBDD MOD TO INT CONVTN OVER REST  
ANDAMAN SEA AND ISOL WK CONVTN OVER WC BAY OFF S AP COAST (.)

**CLOUDS DESCRIPTION OUTSIDE INDIA:**

SAT : INSAT-3D IMG  
Thermal Infrared1 Count 10.8 um  
LIB FULL DISK

01-03-2022/(0600 to 0627) GMT  
01-03-2022/(1130 to 1157) IST



**VORTEX OVER SOUTH INDIAN OCEAN:-**

**VORTEX (VERNON) OVER SOUTH INDIAN OCEAN CENTERED NEAR 16.2S / 86.7E (.) INTENSITY T2.5/3.0 (.) ASSTD BKN LOW/MED CLOUDS WITH EMBDD INT TO V INT CONVTN OVER AREA BET LAT 15.0S TO 20.0S LONG 84.0E TO 90.0E (.)**

**SCT LOW/MED CLOUDS WITH EMBDD MOD TO INT CONVTN OVER S SRI LANKA N NEPAL TIBET CHINA E CHINA SEA GULF OF THAILAND SUMATRA STR OF MALACCA MALAYSIA BORNEO S CHINA SEA JAVA ILS & SEA CELEBES ILS & SEA PHILIPPINES SULU SEA MADAGASCAR MOZAMBIQUE CHANNEL AND OVER INDIAN OCEAN BET LAT 5.0N TO 30.0S LONG 50.0E TO 70.0E AND BET LAT 5.0N TO 23.0S LONG 70.0E TO 120.0E (.)**

**TOO 01/1245 HRS IST=**

**NNNN**

**LEGEND:-**

<b>REGION</b>	<b>NORTH</b>	<b>J&amp;K HP PJB HARY DLH UP UTRKND</b>
	<b>EAST</b>	<b>BHR JHRKND CHTGH OR WB SKM NORTH- EAST STATES</b>
	<b>WEST</b>	<b>RAJ MP GUJ MAHA GOA</b>
	<b>SOUTH</b>	<b>TLNGN AP KRNTK KER TN LKSDP ANDAMAN &amp; NICOBAR ILS</b>

<b>CLOUD DISTRIBUTION</b>	<b>ISOL</b>	<b>ISOLATED (LESS THAN 25%)</b>
	<b>SCT</b>	<b>SCATTERED (25 TO 50%)</b>
	<b>BKN</b>	<b>BROKEN (51 TO 75%)</b>
	<b>SLD</b>	<b>SOLID (GREATER THAN 75%)</b>
<b>CLOUDS TOP TEMPERATURE</b>	<b>CTT</b>	<b>CLOUD TOP TEMPERATURE</b>
<b>CONVECTION</b>	<b>WK CONVTN</b>	<b>WEAK CONVECTION (CTT GREATER THAN -25°C)</b>
	<b>MOD CONVTN</b>	<b>MODERATE CONVECTION (CTT BETWEEN -25°C TO -40°C)</b>
	<b>INT CONVTN</b>	<b>INTENSE CONVECTION (CTT BETWEEN -41°C TO -70°C)</b>
	<b>V INT CONVTN</b>	<b>VERY INTENSE CONVECTION (CTT LESS THAN -70°C)</b>
<b>METEOROLOGICAL SUB-DIVISIONS, STATES &amp; UNION TERRITORIES</b>	<b>ARUPR</b>	<b>ARUNACHAL PRADESH</b>
	<b>BHR</b>	<b>BIHAR</b>
	<b>CHTGH</b>	<b>CHHATTISGARH</b>
	<b>COTL AP</b>	<b>COASTAL ANDHRA PRADESH</b>
	<b>COTL KRNTK</b>	<b>COASTAL KARNATAKA</b>
	<b>COTL ORS</b>	<b>COASTAL ORISSA</b>
	<b>GUJ</b>	<b>GUJARAT</b>
	<b>GWB</b>	<b>GANGETIC WEST BENGAL</b>
	<b>HARY</b>	<b>HARYANA</b>
	<b>DLH</b>	<b>DELHI</b>
	<b>HP</b>	<b>HIMACHAL PRADESH</b>
	<b>J&amp;K</b>	<b>JAMMU AND KASHMIR</b>
	<b>JHRKND</b>	<b>JHARKHAND</b>
	<b>KER</b>	<b>KERALA</b>
	<b>KKN</b>	<b>KONKAN</b>
	<b>LKSDP</b>	<b>LAKSHADWEEP</b>
	<b>M MAHA</b>	<b>MADHYA MAHARASHTRA</b>
	<b>MAHA</b>	<b>MAHARASHTRA</b>
	<b>MANI</b>	<b>MANIPUR</b>
	<b>MEGHA</b>	<b>MEGHALAYA</b>
	<b>MIZO</b>	<b>MIZORAM</b>
	<b>MP</b>	<b>MADHYA PRADESH</b>
	<b>MRTHWD</b>	<b>MARATHWADA</b>
	<b>NAGA</b>	<b>NAGALAND</b>

	<b>N COTL AP</b>	<b>NORTH COASTAL ANDHRA PRADESH</b>
	<b>NIK</b>	<b>NORTH INTERIOR KARNATAKA</b>
	<b>ORS</b>	<b>ORISSA</b>
	<b>PJB</b>	<b>PUNJAB</b>
	<b>RAJ</b>	<b>RAJASTHAN</b>
	<b>RYLSM</b>	<b>RAYALASEEMA</b>
	<b>SAU &amp; KUTCH</b>	<b>SAURASHTRA &amp; KUTCH</b>
	<b>SHWB</b>	<b>SUB-HIMALAYAN WEST BENGAL</b>
	<b>SIK</b>	<b>SOUTH INTERIOR KARNATAKA</b>
	<b>SKM</b>	<b>SIKKIM</b>
	<b>TLNGN</b>	<b>TELANGANA</b>
	<b>TN</b>	<b>TAMIL NADU</b>
	<b>TRP</b>	<b>TRIPURA</b>
	<b>UP</b>	<b>UTTAR PRADESH</b>
	<b>UTRKN</b>	<b>UTTARAKHAND</b>
	<b>VID</b>	<b>VIDHARBHA</b>
	<b>SHWB</b>	<b>SUB HIMALAYAN WEST BENGAL</b>
	<b>GWB</b>	<b>GANGETIC WEST BENGAL</b>
	<b>ARSEA</b>	<b>ARABIAN SEA</b>
	<b>ILS</b>	<b>ISLANDS</b>
<b>MISCELLANEOUS</b>	<b>ASSW</b>	<b>IN ASSOCIATION WITH</b>
	<b>ASSTD</b>	<b>ASSOCIATED</b>
	<b>LLC</b>	<b>LOW LEVEL CIRCULATION</b>
	<b>EMBDD</b>	<b>EMBEDDED</b>
	<b>N/HOOD</b>	<b>NEIGHBOURHOOD</b>
	<b>EXT</b>	<b>EXTREME</b>