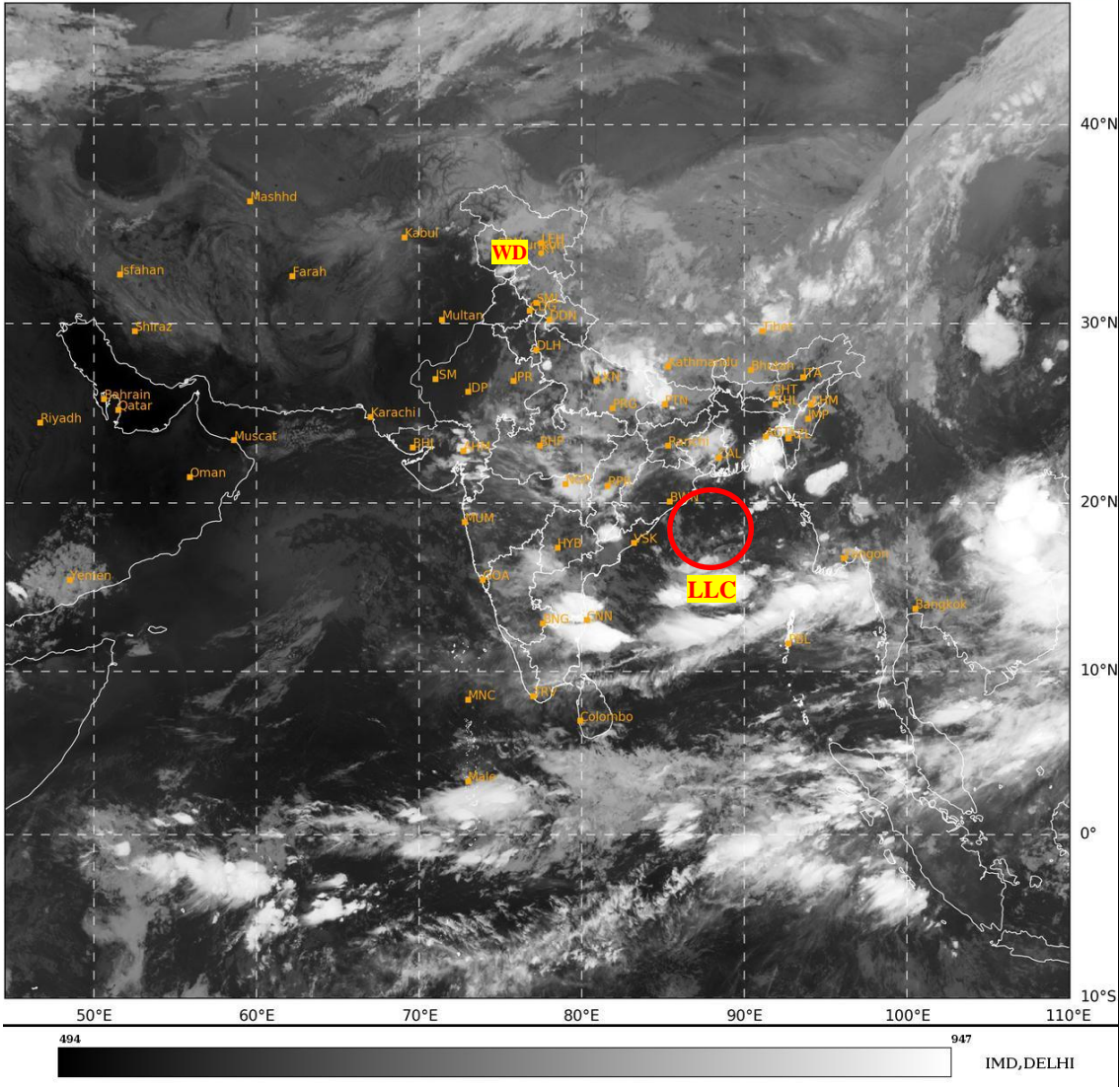




**SATELLITE BULLETIN BASED ON SATELLITE  
IMAGERIES AND PRODUCTS**  
**05.09.2024 TIME 2100 UTC**

SAT : INSAT-3DR IMG  
IMG\_TIR1 10.8 um  
LIC Mercator

05-09-2024/(2215 to 2242) GMT  
06-09-2024/(0345 to 0412) IST



TCIN50 DEMS 052100

SATELLITE BULLETIN BASED ON INSAT-3DR PIC OF 052215 UTC (.)

REGION COVERED BETWEEN LAT 50.0°N TO 35.0°S AND LONG 40.0°E TO 125.0°E (.)

**SALIENT FEATURES:-**

**LLC OVER WEST CENTRAL ADJ NORTH WEST BAY & N/HOOD:-**

LOW LEVEL CIRCULATION (LLC) OVER WC ADJ NW BAY & N/HOOD PERSISTS (.) ASSTD SCT TO BKN LOW/MED CLOUDS WITH EMBDD INT TO V INT CONVTN OVER CENTRAL & NORTH BAY (MINIMUM CTT MINUS 70-90 DEG CEL) (.)

**WESTERN DISTURBANCE (WD):-**

SCT MULTILAYERED CLOUDS OVER LADAKH J&K HP UTRKND TIBET ADJ CHINA IN ASSW WD OVER THE AREA (.)

**CONVECTIVE / THUNDERSTORM ACTIVITY:-**

INTENSE TO VERY INTENSE CONVECTIVE / THUNDERSTORM ACTIVITY OBSERVED OVER UP BHR E GUJ S CHTGH SE RYLSM COTL AP NE TN S ASSAM TRP ANDAMAN ILS (MINIMUM CTT MINUS 70-93 DEG CEL) (.)

MODERATE TO INTENSE CONVECTIVE / THUNDERSTORM ACTIVITY OBSERVED OVER S J&K SE RAJ VID N CHTGH NIK W TLNGN GWB SW ORS E SIK (MINIMUM CTT MINUS 50-70 DEG CEL) (.)



INSAT-3DR 05-SEP-2024 17:15 WV IMG

WATER VAPOUR WIND

(1Kt = 0.5 m/s)

10 Kt

15 Kt

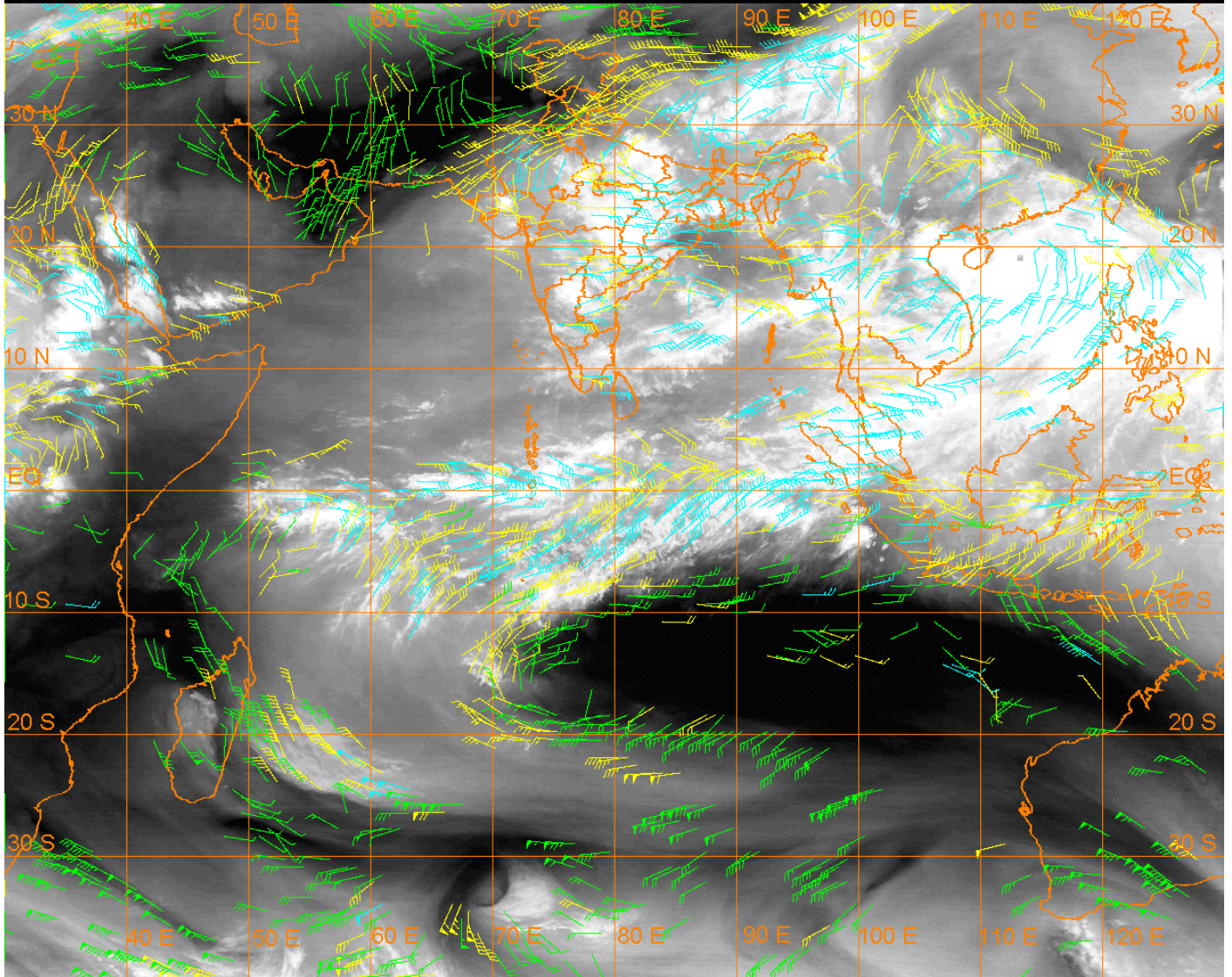
20 Kt

50 Kt

100-250 hPa

251-350 hPa

351-500 hPa



**CLOUDS DESCRIPTION WITHIN INDIA:-**

**NORTH:-**

SCT LOW/MED CLOUDS WITH EMBDD INT TO V INT CONVTN OVER UP (.) SCT LOW/MED CLOUDS WITH EMBDD MOD TO INT CONVTN OVER J&K S HP S UTRKND AND WK TO MOD CONVTN OVER LADAKH N HP N UTRKND DLH HARY E PJB (.) SCT LOW/MED CLOUDS OVER W PJB (.)

**EAST:-**

SCT LOW/MED CLOUDS WITH EMBDD INT TO V INT CONVTN OVER BHR S CHTGH S ASSAM TRP SE BD (.) SCT LOW/MED CLOUDS WITH EMBDD MOD TO INT CONVTN OVER N CHTGH SW ORS GWB NAGA AND WK TO MOD CONVTN OVER JHRKND SHWB SKM REST ORS REST NE STATES (.)

**WEST:-**

SCT LOW/MED CLOUDS WITH EMBDD INT TO V INT CONVTN OVER E GUJ (.) SCT LOW/MED CLOUDS WITH EMBDD MOD TO INT CONVTN OVER SE RAJ MP VID AND WK TO MOD CONVTN OVER REST RAJ W GUJ REST MAHA GOA (.)

**SOUTH:-**

SCT LOW/MED CLOUDS WITH EMBDD INT TO V INT CONVTN OVER E SIK SE RYLSM COTL AP NE TN ANDAMAN ILS (.) SCT LOW/MED CLOUDS WITH EMBDD MOD TO INT CONVTN OVER TLNGN NIK REST RYLSM AND WK TO MOD CONVTN OVER REST KRNTK KER REST TN LKSDP ILS & NICOBAR ILS (.)

**ARABIAN SEA:-**

SCT LOW/MED CLOUDS WITH EMBDD ISOL WK TO MOD CONVTN OVER ARSEA LKSDP ILS AREA COMORIN AREA (.)

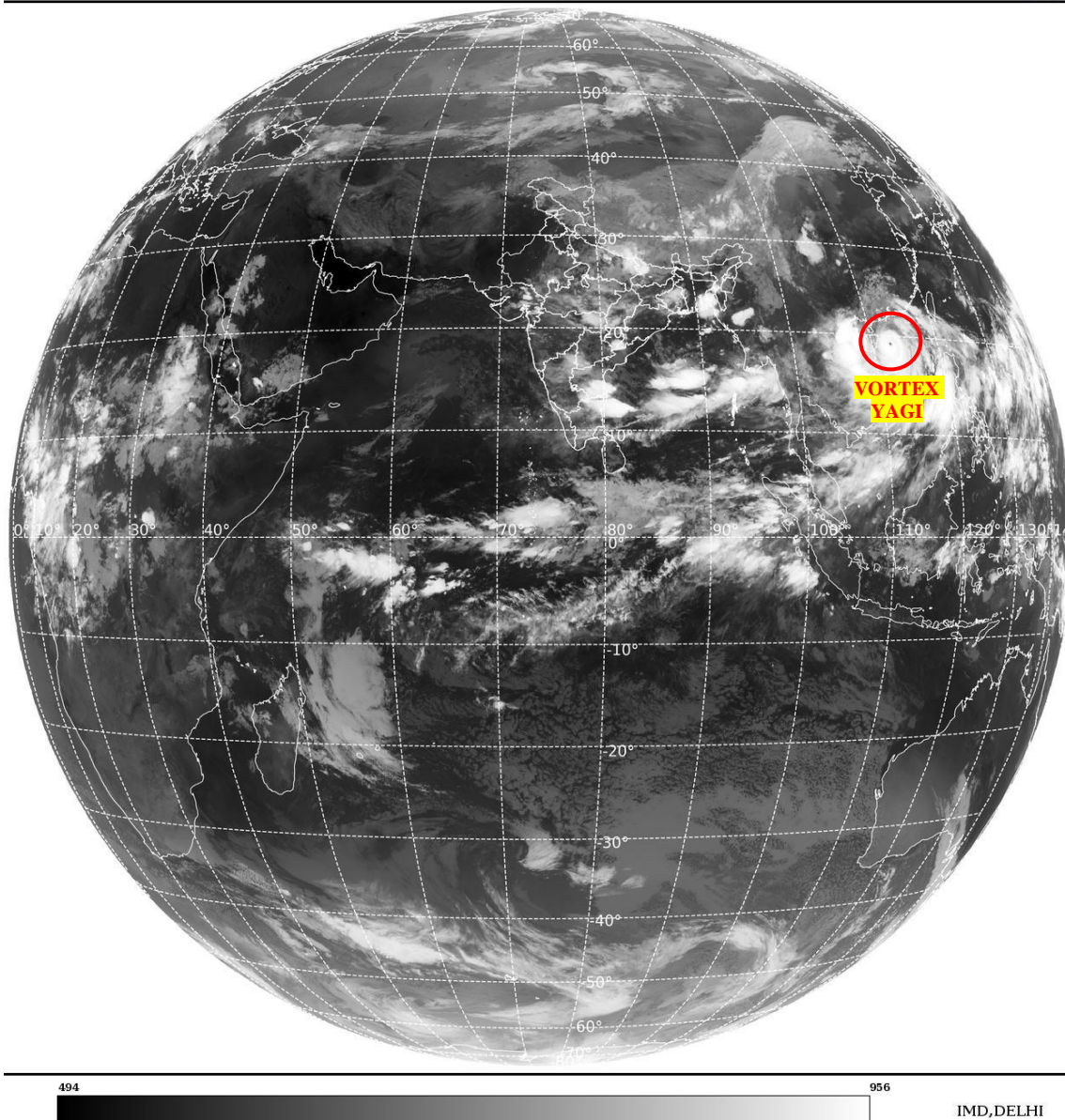
**BAY OF BENGAL & ANDAMAN SEA:-**

SCT TO BKN LOW/MED CLOUDS WITH EMBDD INT TO V INT CONVTN OVER CENTRAL ADJ SOUTH BAY & NE BAY GULF OF MARTABAN N ANDAMAN SEA (.) SCT LOW/MED CLOUDS WITH EMBDD MOD TO INT CONVTN OVER REST SOUTH BAY S ANDAMAN SEA AND WK TO MOD CONVTN OVER NW BAY (.)

**CLOUDS DESCRIPTION OUTSIDE INDIA:-**

SAT : INSAT-3DR IMG  
Thermal Infrared1 Count 10.8 um  
L1B FULL DISK

05-09-2024/(2215 to 2242) GMT  
06-09-2024/(0345 to 0412) IST



**VORTEX (YAGI) OVER SOUTH CHINA SEA:-**

VORTEX (YAGI) OVER SOUTH CHINA SEA (AREA F05) CENTERED NEAR 19.0N / 112.6E (.) INTENSITY T7.0/7.0 (.) EYE VISIBLE (.) CORRESPONDING MAXIMUM SUSTAINED WINDS 120 KTS & ABOVE (.) ASSTD BKN LOW/MED CLOUDS WITH EMBDD INT TO V INT CONVTN OVER AREA BET LAT 10.0N TO 22.0N AND LONG 105.0E TO 122.0E (.)

SCT LOW/MED CLOUDS WITH EMBDD MOD TO INT CONVTN OVER PALK STR MALDIVES NEPAL TIBET CHINA MYANMAR THAILAND GULF OF THAILAND CAMBODIA LAOS VIETNAM GULF OF TONKIN HAINAN TAIWAN SUMATRA STR OF MALACCA MALAYSIA BORNEO SOUTH CHINA SEA CELEBES ILS & SEA PHILIPPINES SULU SEA MADAGASCAR AND OVER INDIAN OCEAN BET LAT 5.0N TO 10.0S LONG 50.0E TO 100.0E AND BET LAT 10.0S TO 24.0S LONG 50.0E TO 70.0E (.)

TOO 06/0500 HRS IST=

NNNN

**LEGEND:-**

|  |                       |  |
|--|-----------------------|--|
| <b>REGION</b>  | <b>NORTH</b>          | <b>J&amp;K HP PJB HARY DLH UP UTRKND</b>                         |
|  | <b>EAST</b>           | <b>BHR JHRKND CHTGH OR WB SKM<br/>NORTH- EAST STATES</b>         |
|  | <b>WEST</b>           | <b>RAJ MP GUJ MAHA GOA</b>                                       |
|  | <b>SOUTH</b>          | <b>TLNGN AP KRNTK KER TN LKSDP<br/>ANDAMAN &amp; NICOBAR ILS</b> |
| <b>CLOUD DISTRIBUTION</b>  | <b>ISOL</b>           | <b>ISOLATED (LESS THAN 25%)</b>                                  |
|  | <b>SCT</b>            | <b>SCATTERED (25 TO 50%)</b>                                     |
|  | <b>BKN</b>            | <b>BROKEN (51 TO 75%)</b>  |
|  | <b>SLD</b>            | <b>SOLID (GREATER THAN 75%)</b>                                  |
| <b>CLOUDS TOP TEMPERATURE</b>  | <b>CTT</b>            | <b>CLOUD TOP TEMPERATURE</b>                                     |
| <b>CONVECTION</b>  | <b>WK CONVTN</b>      | <b>WEAK CONVECTION<br/>(CTT GREATER THAN -25°C)</b>              |
|  | <b>MOD CONVTN</b>     | <b>MODERATE CONVECTION<br/>(CTT BETWEEN -25°C TO -40°C)</b>      |
|  | <b>INT CONVTN</b>     | <b>INTENSE CONVECTION<br/>(CTT BETWEEN -41°C TO -70°C)</b>       |
|  | <b>V INT CONVTN</b>   | <b>VERY INTENSE CONVECTION<br/>(CTT LESS THAN -70°C)</b>         |
| <b>METEOROLOGICAL SUB- DIVISIONS, STATES &amp; UNION TERRITORIES</b> | <b>ARUPR</b>          | <b>ARUNACHAL PRADESH</b>   |
|  | <b>BHR</b>            | <b>BIHAR</b>   |
|  | <b>CHTGH</b>          | <b>CHHATTISGARH</b>  |
|  | <b>COTL AP</b>        | <b>COASTAL ANDHRA PRADESH</b>                                    |
|  | <b>COTL KRNTK</b>     | <b>COASTAL KARNATAKA</b>   |
|  | <b>COTL ORS</b>       | <b>COASTAL ORISSA</b>  |
|  | <b>GUJ</b>            | <b>GUJARAT</b>   |
|  | <b>GWB</b>            | <b>GANGETIC WEST BENGAL</b>                                      |
|  | <b>HARY</b>           | <b>HARYANA</b>   |
|  | <b>DLH</b>            | <b>DELHI</b>   |
|  | <b>HP</b>             | <b>HIMACHAL PRADESH</b>  |
|  | <b>J&amp;K</b>        | <b>JAMMU AND KASHMIR</b>   |
|  | <b>JHRKND</b>         | <b>JHARKHAND</b>   |
|  | <b>KER</b>            | <b>KERALA</b>  |
|  | <b>KKN</b>            | <b>KONKAN</b>  |
|  | <b>LKSDP</b>          | <b>LAKSHADWEEP</b>   |
|  | <b>M MAHA</b>         | <b>MADHYA MAHARASHTRA</b>  |
|  | <b>MAHA</b>           | <b>MAHARASHTRA</b>   |
|  | <b>MANI</b>           | <b>MANIPUR</b>   |
|  | <b>MEGHA</b>          | <b>MEGHALAYA</b>   |
|  | <b>MIZO</b>           | <b>MIZORAM</b>   |
| <b>MP</b>  | <b>MADHYA PRADESH</b> |  |
|  | <b>MRTHWD</b>         | <b>MARATHWADA</b>  |
|  | <b>NAGA</b>           | <b>NAGALAND</b>  |
|  | <b>N COTL AP</b>      | <b>NORTH COASTAL ANDHRA PRADESH</b>                              |

|                      |                        |                                  |
|----------------------|------------------------|----------------------------------|
|                      | <b>NIK</b>             | <b>NORTH INTERIOR KARNATAKA</b>  |
|                      | <b>ORS</b>             | <b>ORISSA</b>                    |
|                      | <b>PJB</b>             | <b>PUNJAB</b>                    |
|                      | <b>RAJ</b>             | <b>RAJASTHAN</b>                 |
|                      | <b>RYLSM</b>           | <b>RAYALASEEMA</b>               |
|                      | <b>SAU &amp; KUTCH</b> | <b>SAURASHTRA &amp; KUTCH</b>    |
|                      | <b>SHWB</b>            | <b>SUB-HIMALAYAN WEST BENGAL</b> |
|                      | <b>SIK</b>             | <b>SOUTH INTERIOR KARNATAKA</b>  |
|                      | <b>SKM</b>             | <b>SIKKIM</b>                    |
|                      | <b>TLNGN</b>           | <b>TELANGANA</b>                 |
|                      | <b>TN</b>              | <b>TAMIL NADU</b>                |
|                      | <b>TRP</b>             | <b>TRIPURA</b>                   |
|                      | <b>UP</b>              | <b>UTTAR PRADESH</b>             |
|                      | <b>UTRKND</b>          | <b>UTTARAKHAND</b>               |
|                      | <b>VID</b>             | <b>VIDHARBHA</b>                 |
|                      | <b>SHWB</b>            | <b>SUB HIMALAYAN WEST BENGAL</b> |
|                      | <b>GWB</b>             | <b>GANGETIC WEST BENGAL</b>      |
|                      | <b>ARSEA</b>           | <b>ARABIAN SEA</b>               |
|                      | <b>ILS</b>             | <b>ISLANDS</b>                   |
| <b>MISCELLANEOUS</b> | <b>ASSW</b>            | <b>IN ASSOCIATION WITH</b>       |
|                      | <b>ASSTD</b>           | <b>ASSOCIATED</b>                |
|                      | <b>LLC</b>             | <b>LOW LEVEL CIRCULATION</b>     |
|                      | <b>EMBDD</b>           | <b>EMBEDDED</b>                  |
|                      | <b>N/HOOD</b>          | <b>NEIGHBOURHOOD</b>             |
|                      | <b>EXT</b>             | <b>EXTREME</b>                   |