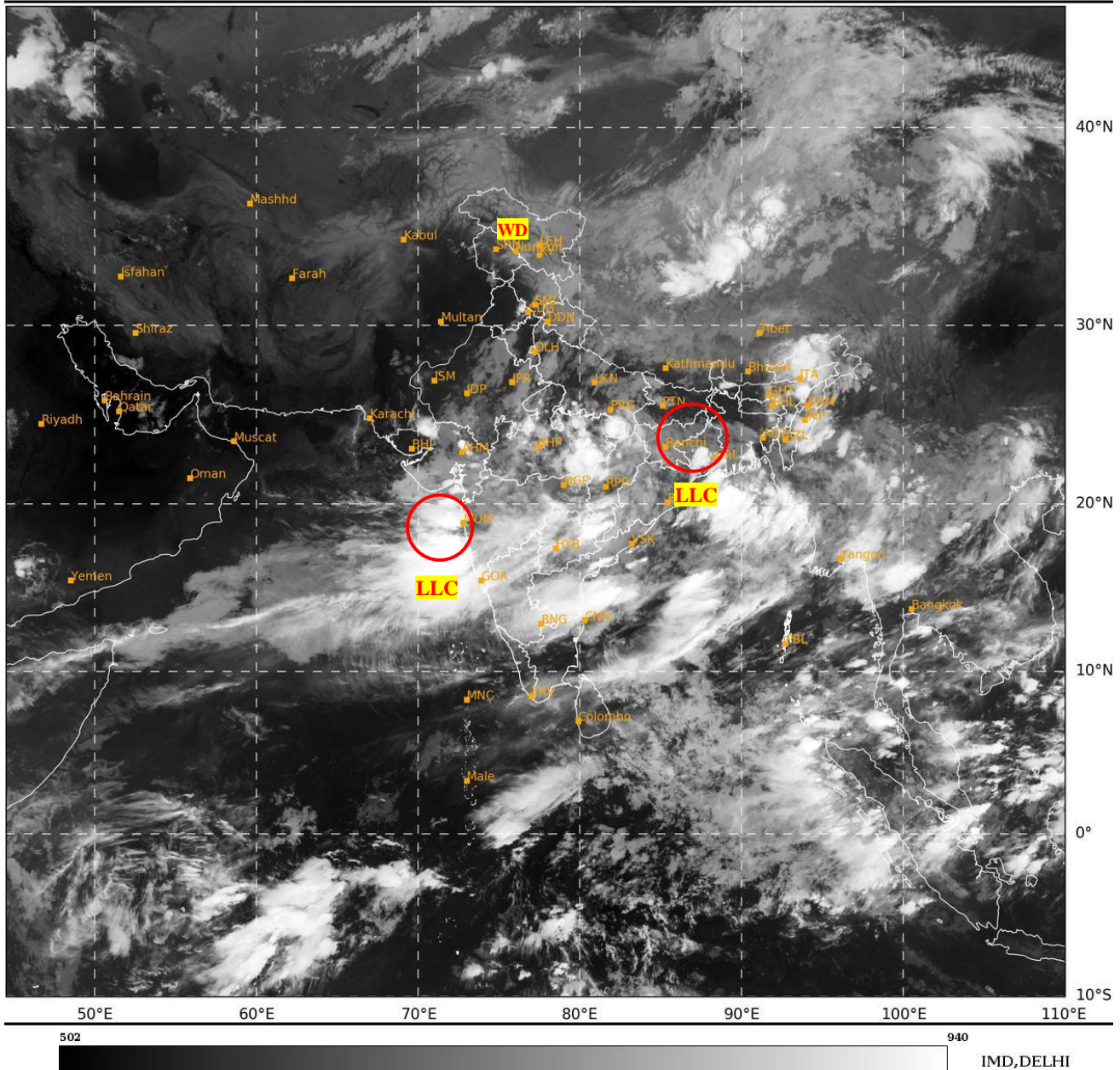




**SATELLITE BULLETIN BASED ON SATELLITE
IMAGERIES AND PRODUCTS**
24.08.2024 TIME 0000 UTC

SAT : INSAT-3DR IMG
IMG_TIR1 10.8 um
LIC Mercator

24-08-2024/(0015 to 0042) GMT
24-08-2024/(0545 to 0612) IST



TCIN50 DEMS 240000

SATELLITE BULLETIN BASED ON INSAT-3DR PIC OF 240015 UTC (.)

REGION COVERED BETWEEN LAT 50.0°N TO 35.0°S AND LONG 40.0°E TO 125.0°E (.)

SALIENT FEATURES:-

LLC OVER EAST CENTRAL ARABIAN SEA OFF MAHARASHTRA COAST & N/HOOD :-

LOW LEVEL CIRCULATION (LLC) OVER EC ARSEA OFF MAHARASHTRA COAST & N/HOOD (.) ASSTD SCT LOW/MED CLOUDS WITH EMBDD INT TO V INT CONVTN OVER EC ARSEA GULF OF CAMBAY KKN (MINIMUM **CTT MINUS 93 DEG CEL**) (.)

LLC OVER NORTH GWB ADJ NE JHRKND & N/HOOD:-

LOW LEVEL CIRCULATION (LLC) OVER NORTH GWB ADJ NE JHRKND & N/HOOD (.) ASSTD SCT TO BKN LOW/MED CLOUDS WITH EMBDD INT TO V INT CONVTN OVER S GWB NORTH BAY (MINIMUM **CTT MINUS 93 DEG CEL**) AND MOD TO INT CONVTN OVER N GWB JHRKND ORS CHTGH S BD (.)

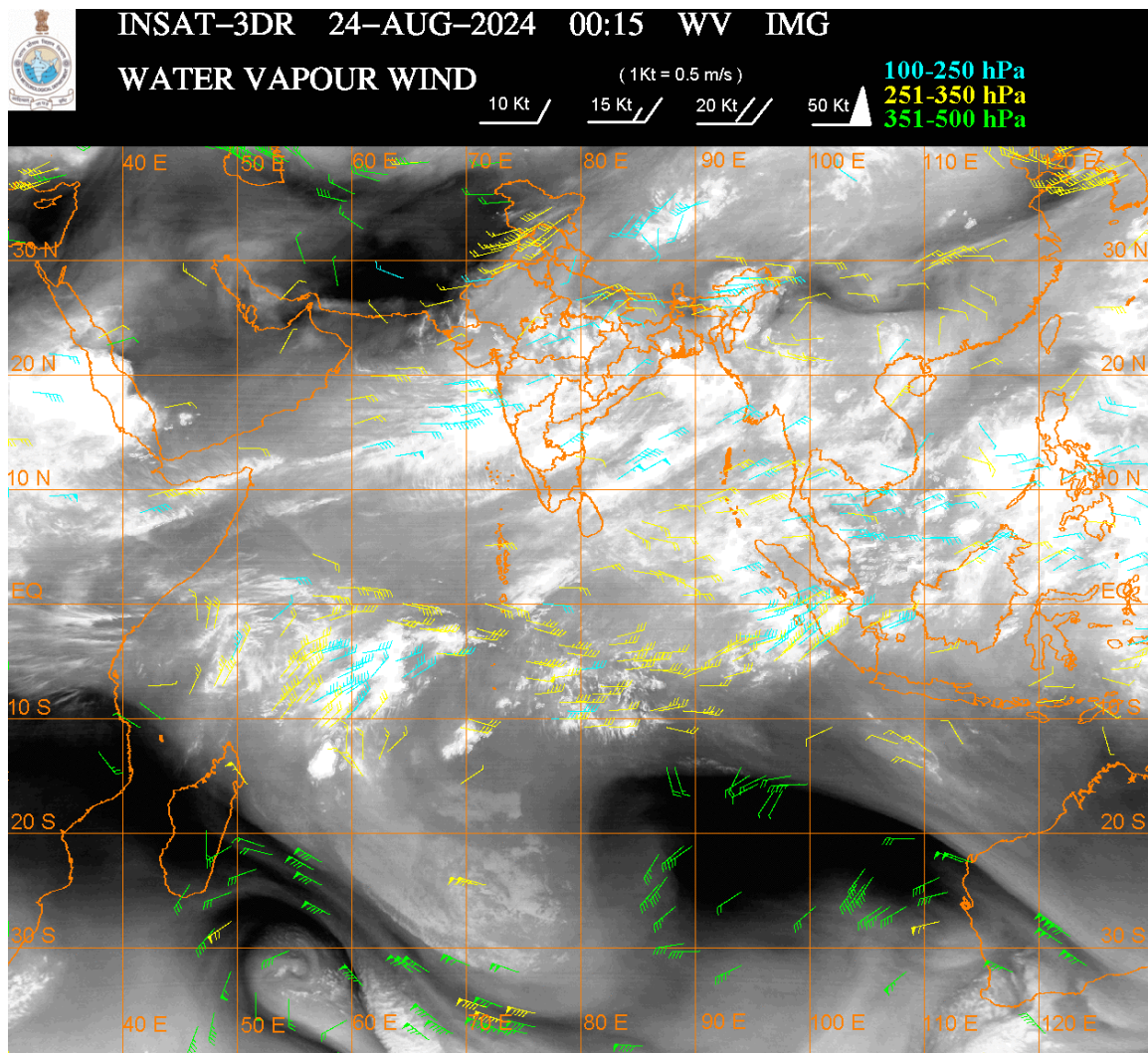
WESTERN DISTURBANCE (WD):-

SCT MULTILAYERED CLOUDS OVER NW LADAKH ADJ N PAK AND N/HOOD IN ASSW **WD** OVER THE AREA (.)

CONVECTIVE / THUNDERSTORM ACTIVITY:-

INTENSE TO VERY INTENSE CONVECTIVE / THUNDERSTORM ACTIVITY OBSERVED OVER S UP CHTGH S GWB E ASSAM ARUPR E MP N GUJ MAHA EC TLNGN S COTL AP (MINIMUM **CTT MINUS 80-93** DEG CEL) (.)

MODERATE TO INTENSE CONVECTIVE / THUNDERSTORM ACTIVITY OBSERVED OVER NE PJB W MP ORS NORTH SHWB E MEGHA NAGA MANI BD KRNTK REST TLNGN RYLSM (MINIMUM **CTT MINUS 50-70** DEG CEL) (.)



CLOUDS DESCRIPTION WITHIN INDIA:-

NORTH:-

SCT TO BKN LOW/MED CLOUDS WITH EMBDD INT TO V INT CONVTN OVER S UP AND MOD TO INT CONVTN OVER NE PJB (.) SCT LOW/MED CLOUDS WITH EMBDD ISOL WK TO MOD CONVTN OVER LADAKH J&K E HP UTRKND S HARY N UP (.) SCT LOW/MED CLOUDS OVER W HP SE PJB N HARY DLH (.)

EAST:-

SCT TO BKN LOW/MED CLOUDS WITH EMBDD INT TO V INT CONVTN OVER CHTGH S GWB E ASSAM W ARUPR (.) SCT LOW/MED CLOUDS WITH EMBDD MOD TO INT CONVTN OVER NORTH SHWB E ARUPR NAGA MANI & BD (.) SCT LOW/MED CLOUDS WITH EMBDD WK TO MOD CONVTN OVER W BHR JHRKND ORS SKM E MEGHA MIZO TRP (.)SCT LOW/MED CLOUDS OVER SOUTH SHWB W MEGHA (.)

WEST:-

SCT TO BKN LOW/MED CLOUDS WITH EMBDD INT TO V INT CONVTN OVER E MP N GUJ AND MOD TO INT CONVTN OVER MAHA W MP GOA (.) SCT LOW/MED CLOUDS WITH EMBDD WK TO MOD CONVTN OVER RAJ S GUJ (.)

SOUTH:-

SCT LOW/MED CLOUDS WITH EMBDD INT TO V INT CONVTN OVER EXT E TLNGN S COTL AP
(.) SCT LOW/MED CLOUDS WITH EMBDD MOD TO INT CONVTN OVER KRNTK REST TLNGN
RYLSM (.)SCT LOW/MED CLOUDS OVER N COTL AP KER TN LKSDP ANDAMAN & NICOBAR
ILS (.)

ARABIAN SEA:-

SCT TO BKN LOW/MED CLOUDS WITH EMBDD INT TO V INT CONVTN OVER EC ARSEA GULF
OF CAMBAY (.) SCT LOW/MED CLOUDS WITH EMBDD MOD TO INT CONVTN OVER WC ADJ
SW ARSEA AND ISOL WK TO MOD CONVTN OVER NE &SE ARSEA GULF OF KUTCHH (.)

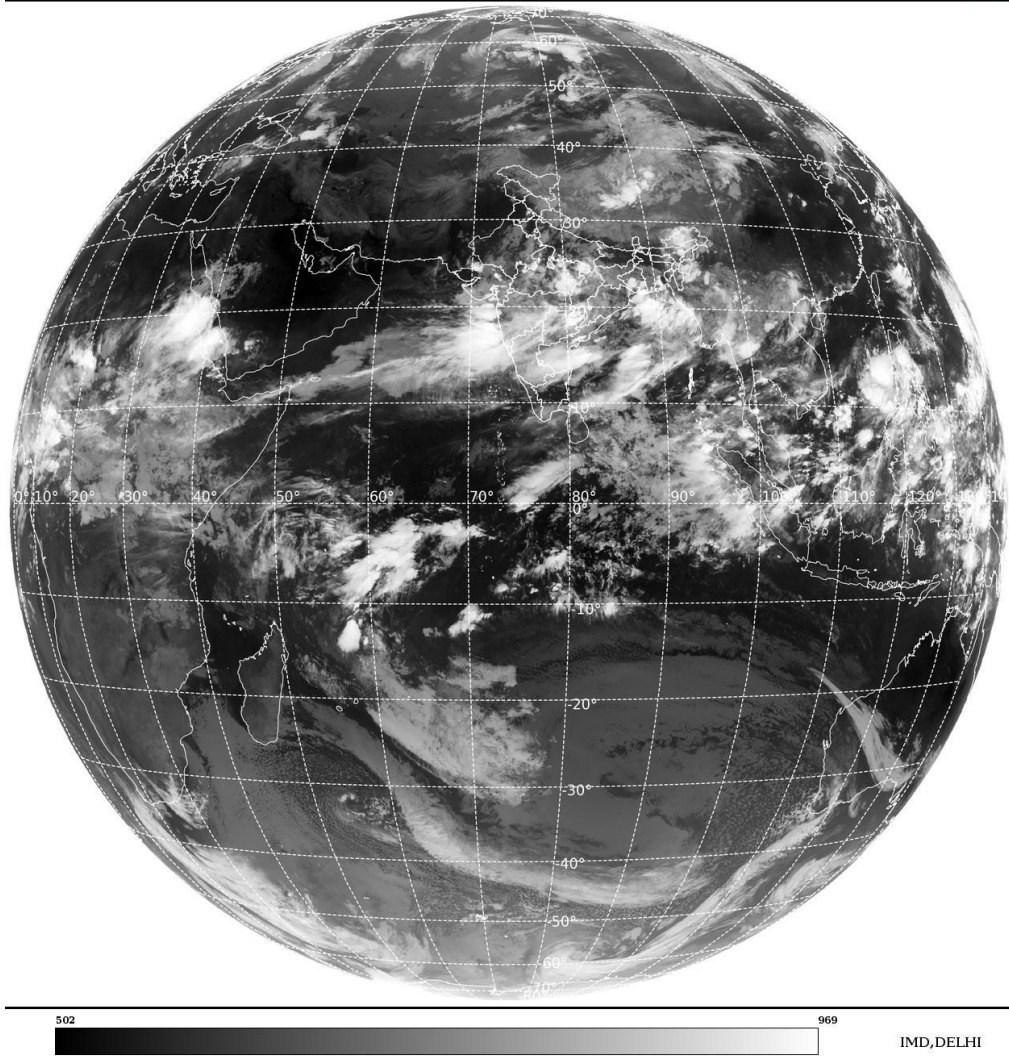
BAY OF BENGAL & ANDAMAN SEA:-

SCT TO BKN LOW/MED CLOUDS WITH EMBDD INT TO V INT CONVTN OVER BAY (.) SCT TO
BKN LOW/MED CLOUDS WITH EMBDD MOD TO INT CONVTN OVER ANDAMAN SEA & GULF
OF MARTABAN (.)

CLOUDS DESCRIPTION OUTSIDE INDIA:-

SAT : INSAT-3DR IMG
Thermal Infrared1 Count 10.8 um
L1B FULL DISK

24-08-2024/(0015 to 0042) GMT
24-08-2024/(0545 to 0612) IST



SCT LOW/MED CLOUDS WITH EMBDD MOD TO INT CONVTN OVER SRI LANKA MALDIVES
NEPAL BHUTAN TIBET CHINA MYANMAR THAILAND GULF OF THAILAND CAMBODIA LAOS
VIETNAM GULF OF TONKIN HAINAN TAIWAN SUMATRA STR OF MALACCA MALAYSIA
BORNEO SOUTH CHINA SEA JAVA ILS & SEA CELEBES ILS & SEA PHILIPPINES AND OVER
INDIAN OCEAN BET LAT 5.0N TO 15.0S LONG 40.0E TO 110.0E AND BET LAT 15.0S TO 22.0S
LONG 56.0E TO 75.0E (.)

TOO 24/0710 HRS IST=

NNNN

LEGEND:-

REGION	NORTH	J&K HP PJB HARY DLH UP UTRKND
	EAST	BHR JHRKND CHTGH OR WB SKM NORTH- EAST STATES
	WEST	RAJ MP GUJ MAHA GOA
	SOUTH	TLNGN AP KRNTK KER TN LKSDP ANDAMAN & NICOBAR ILS
CLOUD DISTRIBUTION	ISOL	ISOLATED (LESS THAN 25%)
	SCT	SCATTERED (25 TO 50%)
	BKN	BROKEN (51 TO 75%)
	SLD	SOLID (GREATER THAN 75%)
CLOUDS TOP TEMPERATURE	CTT	CLOUD TOP TEMPERATURE
CONVECTION	WK CONVTN	WEAK CONVECTION (CTT GREATER THAN -25°C)
	MOD CONVTN	MODERATE CONVECTION (CTT BETWEEN -25°C TO -40°C)
	INT CONVTN	INTENSE CONVECTION (CTT BETWEEN -41°C TO -70°C)
	V INT CONVTN	VERY INTENSE CONVECTION (CTT LESS THAN -70°C)
METEOROLOGICAL SUB- DIVISIONS, STATES & UNION TERRITORIES	ARUPR	ARUNACHAL PRADESH
	BHR	BIHAR
	CHTGH	CHHATTISGARH
	COTL AP	COASTAL ANDHRA PRADESH
	COTL KRNTK	COASTAL KARNATAKA
	COTL ORS	COASTAL ORISSA
	GUJ	GUJARAT
	GWB	GANGETIC WEST BENGAL
	HARY	HARYANA
	DLH	DELHI
	HP	HIMACHAL PRADESH
	J&K	JAMMU AND KASHMIR
	JHRKND	JHARKHAND
	KER	KERALA
	KKN	KONKAN
	LKSDP	LAKSHADWEEP
	M MAHA	MADHYA MAHARASHTRA
	MAHA	MAHARASHTRA
	MANI	MANIPUR
	MEGHA	MEGHALAYA
MIZO	MIZORAM	
MP	MADHYA PRADESH	

	MRTHWD	MARATHWADA
	NAGA	NAGALAND
	N COTL AP	NORTH COASTAL ANDHRA PRADESH
	NIK	NORTH INTERIOR KARNATAKA
	ORS	ORISSA
	PJB	PUNJAB
	RAJ	RAJASTHAN
	RYLSM	RAYALASEEMA
	SAU & KUTCH	SAURASHTRA & KUTCH
	SHWB	SUB-HIMALAYAN WEST BENGAL
	SIK	SOUTH INTERIOR KARNATAKA
	SKM	SIKKIM
	TLNGN	TELANGANA
	TN	TAMIL NADU
	TRP	TRIPURA
	UP	UTTAR PRADESH
	UTRKND	UTTARAKHAND
	VID	VIDHARBHA
	SHWB	SUB HIMALAYAN WEST BENGAL
	GWB	GANGETIC WEST BENGAL
	ARSEA	ARABIAN SEA
	ILS	ISLANDS
MISCELLANEOUS	ASSW	IN ASSOCIATION WITH
	ASSTD	ASSOCIATED
	LLC	LOW LEVEL CIRCULATION
	EMBDD	EMBEDDED
	N/HOOD	NEIGHBOURHOOD
	EXT	EXTREME