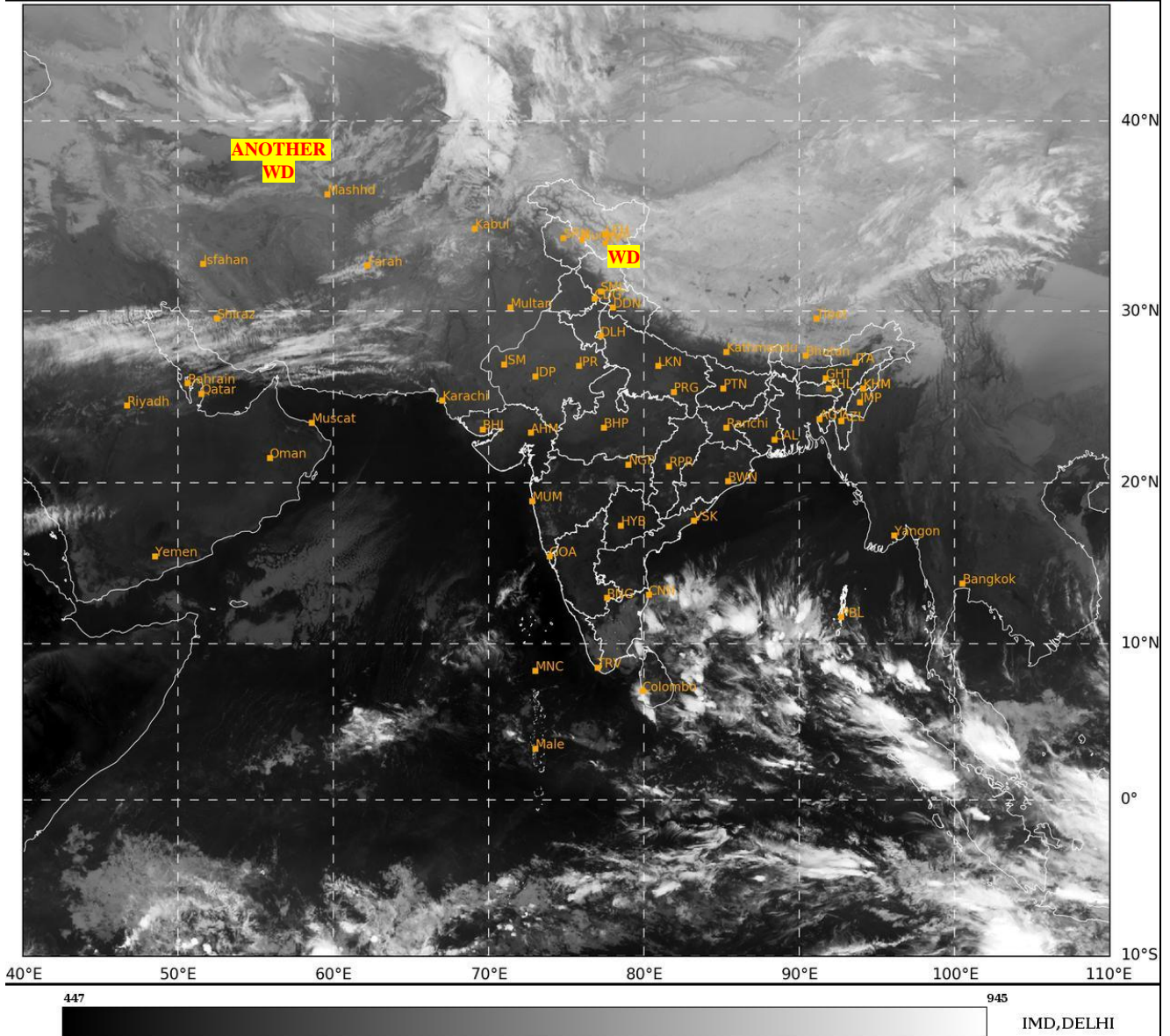




**SATELLITE BULLETIN BASED ON SATELLITE  
IMAGERIES AND PRODUCTS  
29.12.2024 TIME 1500 UTC**

SAT : INSAT-3DR IMG  
IMG\_TIR1 10.8 um  
LIC Mercator

29-12-2024/(1445 to 1512) GMT  
29-12-2024/(2015 to 2042) IST



TCIN50 DEMS 291500

SATELLITE BULLETIN BASED ON INSAT-3DR PIC OF 291445 UTC (.)

REGION COVERED BETWEEN LAT 50.0°N TO 35.0°S AND LONG 40.0°E TO 125.0°E (.)

**SALIENT FEATURES:-**

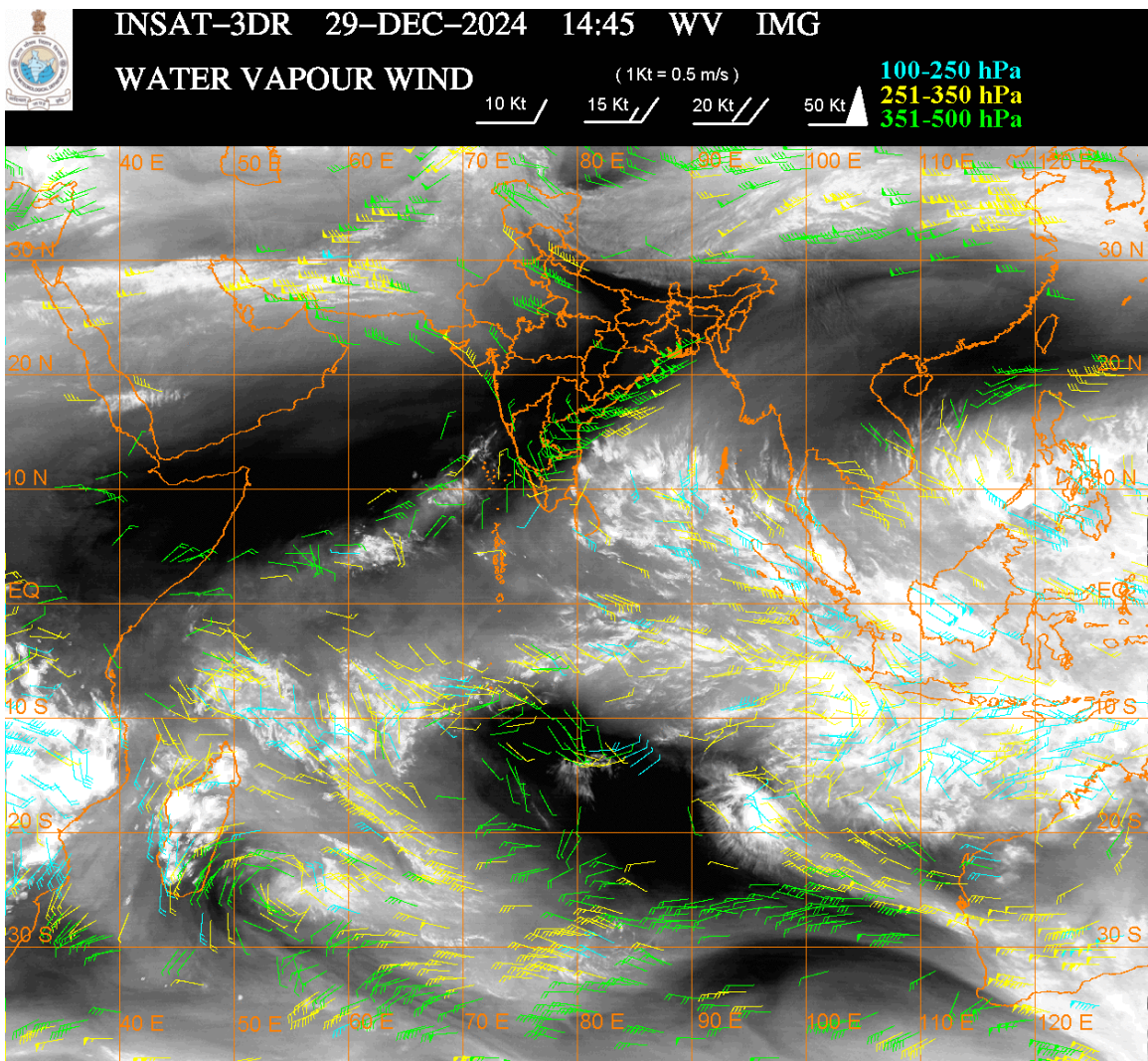
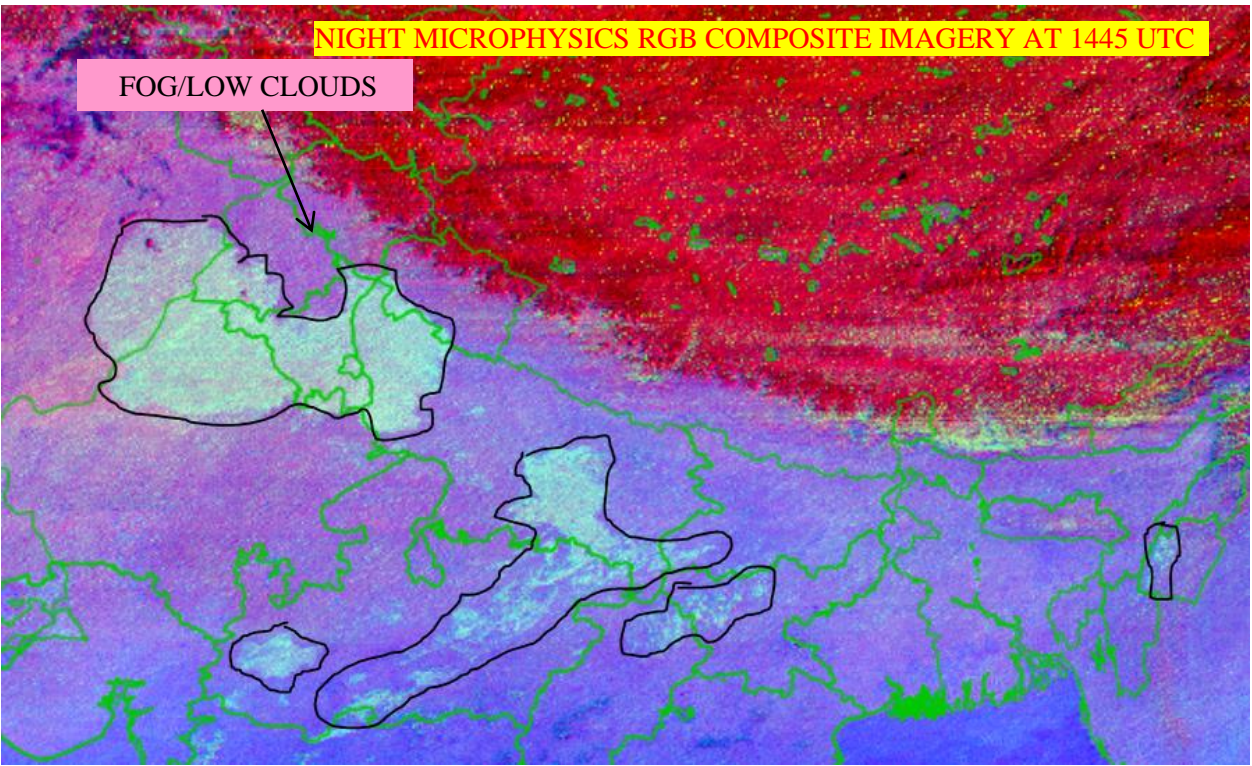
**WESTERN DISTURBANCE:-**

SCT MULTILAYERED CLOUDS OVER J&K LADAKH HP UTRKND SKM ARUPR TIBET ADJ CHINA IN ASSW **WD** OVER THE AREA (.)

SCT MULTILAYERED CLOUDS OVER CASPIAN SEA IRAN AFGAN AND N/HOOD IN ASSW **ANOTHER WD** OVER THE AREA (.)

**FOG / LOW CLOUDS:-**

NIGHT MICROPHYSICS RGB COMPOSITE IMAGERY OF INSAT 3DR (RAPID) AT 1445 UTC INDICATES SCT FOG / LOW CLOUDS OVER EC PAK J&K S PJB HARY N RAJ DLH UP MP BHR N CHTGH NW JHRKND MANI (.)



**CLOUDS DESCRIPTION WITHIN INDIA:-**

**NORTH:-**

SCT LOW/MED CLOUDS WITH EMBDD WK CONVTN OVER LADAKH N HP N UTRKND (.) SCT LOW/MED CLOUDS OVER J&K S HP S UTRKND PJB HARY UP (.)

**EAST:-**

SCT LOW/MED CLOUDS WITH EMBDD WK CONVTN OVER SKM ASSAM ARUPR (.) ISOL TO SCT LOW/MED CLOUDS OVER CHTGH JHRKND SHWB REST NE STATES (.)

**WEST:-**

SCT LOW/MED CLOUDS OVER MP MAHA (.)

**SOUTH:-**

SCT LOW/MED CLOUDS WITH EMBDD MOD TO INT CONVTN OVER NICOBAR ILS AREA (.)  
SCT LOW/MED CLOUDS OVER KRNTK TLNGN RYLSM COTL AP KER TN LKSDP ILS AREA  
ANDAMAN ILS (.)

**ARABIAN SEA:-**

SCT LOW/MED CLOUDS WITH EMBDD MOD TO INT CONVTN OVER SC ARSEA MALDIVES &  
COMORIN AREA AND WK TO MOD CONVTN OVER SE ARSEA LKSDP ILS AREA (.)

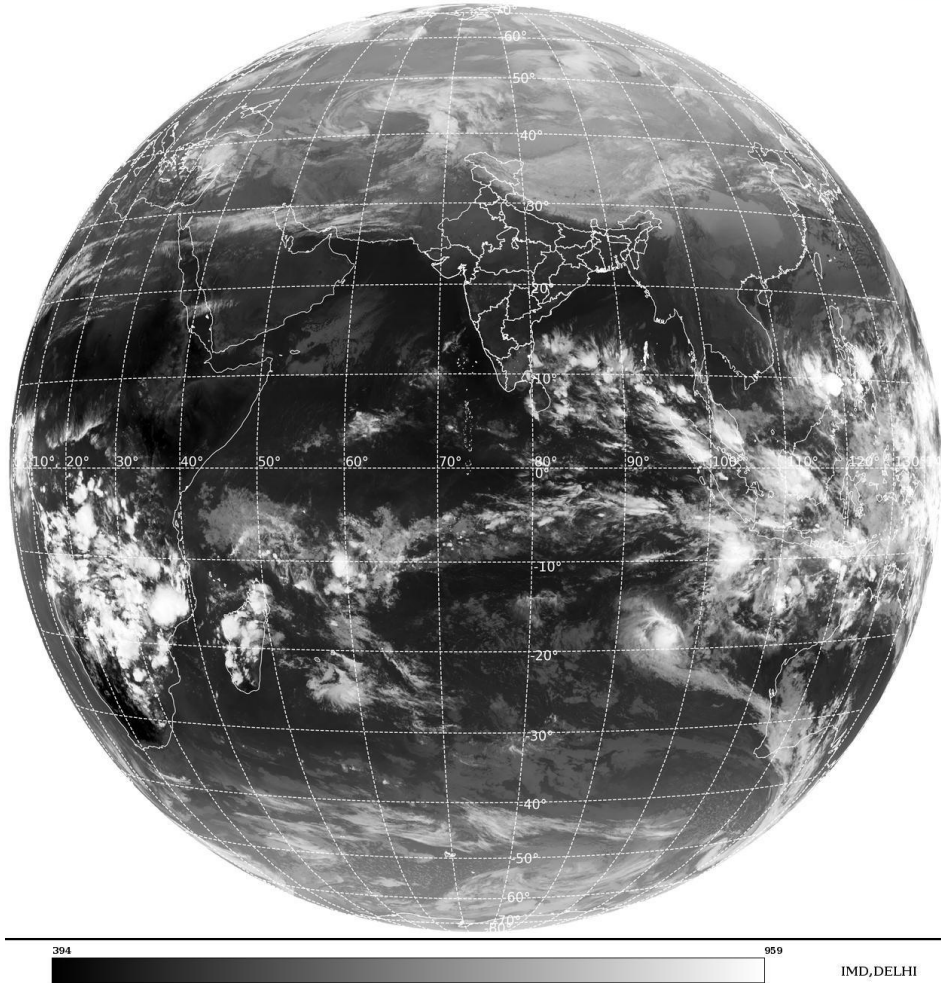
**BAY OF BENGAL & ANDAMAN SEA:-**

SCT LOW/MED CLOUDS WITH EMBDD INT TO V INT CONVTN OVER SE BAY (.) SCT LOW/MED  
CLOUDS WITH EMBDD MOD TO INT CONVTN OVER CENTRAL & SW BAY ANDAMAN SEA (.)

**CLOUDS DESCRIPTION OUTSIDE INDIA:-**

SAT : INSAT-3DR IMG  
Thermal Infrared1 Count 10.8 um  
LIB FULL DISK

29-12-2024/(1445 to 1512) GMT  
29-12-2024/(2015 to 2042) IST



SCT LOW/MED CLOUDS WITH EMBDD MOD TO INT CONVTN OVER MALDIVES TIBET CHINA  
YELLOW SEA SOUTH THAILAND SUMATRA STR OF MALACCA MALAYSIA BORNEO SOUTH  
CHINA SEA JAVA ILS & SEA CELEBES ILS & SEA PHILIPPINES SULU SEA MADAGASCAR  
MOZAMBIQUE CHANNEL AND OVER INDIAN OCEAN BET LAT 5.0N TO 20.0S LONG 40.0E TO  
120.0E AND BET LAT 20.0S TO 35.0S LONG 50.0E TO 65.0E (.)

TOO 29/2130 EF=

NNNN

**LEGEND:-**

|  |       |                               |
|--|-------|-------------------------------|
|  | NORTH | J&K HP PJB HARY DLH UP UTRKND |
|--|-------|-------------------------------|

|  |                     |  |
|--|---------------------|--|
| <b>REGION</b>  | <b>EAST</b>         | <b>BHR JHRKND CHTGH ORS WB SKM NORTH- EAST STATES</b>        |
|  | <b>WEST</b>         | <b>RAJ MP GUJ MAHA GOA</b>                                   |
|  | <b>SOUTH</b>        | <b>TLNGN AP KRNTK KER TN LKSDP ANDAMAN &amp; NICOBAR ILS</b> |
| <b>CLOUD DISTRIBUTION</b>  | <b>ISOL</b>         | <b>ISOLATED (LESS THAN 25%)</b>                              |
|  | <b>SCT</b>          | <b>SCATTERED (25 TO 50%)</b>                                 |
|  | <b>BKN</b>          | <b>BROKEN (51 TO 75%)</b>                                    |
|  | <b>SLD</b>          | <b>SOLID (GREATER THAN 75%)</b>                              |
| <b>CLOUDS TOP TEMPERATURE</b>  | <b>CTT</b>          | <b>CLOUD TOP TEMPERATURE</b>                                 |
| <b>CONVECTION</b>  | <b>WK CONVTN</b>    | <b>WEAK CONVECTION (CTT GREATER THAN -25°C)</b>              |
|  | <b>MOD CONVTN</b>   | <b>MODERATE CONVECTION (CTT BETWEEN -25°C TO -40°C)</b>      |
|  | <b>INT CONVTN</b>   | <b>INTENSE CONVECTION (CTT BETWEEN -41°C TO -70°C)</b>       |
|  | <b>V INT CONVTN</b> | <b>VERY INTENSE CONVECTION (CTT LESS THAN -70°C)</b>         |
| <b>METEOROLOGICAL SUB- DIVISIONS, STATES &amp; UNION TERRITORIES</b> | <b>ARUPR</b>        | <b>ARUNACHAL PRADESH</b>                                     |
|  | <b>BHR</b>          | <b>BIHAR</b>   |
|  | <b>CHTGH</b>        | <b>CHHATTISGARH</b>  |
|  | <b>COTL AP</b>      | <b>COASTAL ANDHRA PRADESH</b>                                |
|  | <b>COTL KRNTK</b>   | <b>COASTAL KARNATAKA</b>                                     |
|  | <b>COTL ORS</b>     | <b>COASTAL ORISSA</b>  |
|  | <b>GUJ</b>          | <b>GUJARAT</b>   |
|  | <b>GWB</b>          | <b>GANGETIC WEST BENGAL</b>                                  |
|  | <b>HARY</b>         | <b>HARYANA</b>   |
|  | <b>DLH</b>          | <b>DELHI</b>   |
|  | <b>HP</b>           | <b>HIMACHAL PRADESH</b>                                      |
|  | <b>J&amp;K</b>      | <b>JAMMU AND KASHMIR</b>                                     |
|  | <b>JHRKND</b>       | <b>JHARKHAND</b>   |
|  | <b>KER</b>          | <b>KERALA</b>  |
|  | <b>KKN</b>          | <b>KONKAN</b>  |
|  | <b>LKSDP</b>        | <b>LAKSHADWEEP</b>   |
|  | <b>M MAHA</b>       | <b>MADHYA MAHARASHTRA</b>                                    |
|  | <b>MAHA</b>         | <b>MAHARASHTRA</b>   |
|  | <b>MANI</b>         | <b>MANIPUR</b>   |
|  | <b>MEGHA</b>        | <b>MEGHALAYA</b>   |
|  | <b>MIZO</b>         | <b>MIZORAM</b>   |
|  | <b>MP</b>           | <b>MADHYA PRADESH</b>  |
|  |                     | <b>MRTHWD</b>  |
| <b>NAGA</b>  |                     | <b>NAGALAND</b>  |
| <b>N COTL AP</b>   |                     | <b>NORTH COASTAL ANDHRA PRADESH</b>                          |
| <b>NIK</b>   |                     | <b>NORTH INTERIOR KARNATAKA</b>                              |
| <b>ORS</b>   |                     | <b>ORISSA</b>  |
| <b>PJB</b>   |                     | <b>PUNJAB</b>  |
| <b>RAJ</b>   |                     | <b>RAJASTHAN</b>   |

|                      |                        |                                  |
|----------------------|------------------------|----------------------------------|
|                      | <b>RYLSM</b>           | <b>RAYALASEEMA</b>               |
|                      | <b>SAU &amp; KUTCH</b> | <b>SAURASHTRA &amp; KUTCH</b>    |
|                      | <b>SHWB</b>            | <b>SUB-HIMALAYAN WEST BENGAL</b> |
|                      | <b>SIK</b>             | <b>SOUTH INTERIOR KARNATAKA</b>  |
|                      | <b>SKM</b>             | <b>SIKKIM</b>                    |
|                      | <b>TLNGN</b>           | <b>TELANGANA</b>                 |
|                      | <b>TN</b>              | <b>TAMIL NADU</b>                |
|                      | <b>TRP</b>             | <b>TRIPURA</b>                   |
|                      | <b>UP</b>              | <b>UTTAR PRADESH</b>             |
|                      | <b>UTRKND</b>          | <b>UTTARAKHAND</b>               |
|                      | <b>VID</b>             | <b>VIDHARBHA</b>                 |
|                      | <b>SHWB</b>            | <b>SUB HIMALAYAN WEST BENGAL</b> |
|                      | <b>GWB</b>             | <b>GANGETIC WEST BENGAL</b>      |
|                      | <b>ARSEA</b>           | <b>ARABIAN SEA</b>               |
|                      | <b>ILS</b>             | <b>ISLANDS</b>                   |
| <b>MISCELLANEOUS</b> | <b>ASSW</b>            | <b>IN ASSOCIATION WITH</b>       |
|                      | <b>ASSTD</b>           | <b>ASSOCIATED</b>                |
|                      | <b>LLC</b>             | <b>LOW LEVEL CIRCULATION</b>     |
|                      | <b>EMBDD</b>           | <b>EMBEDDED</b>                  |
|                      | <b>N/HOOD</b>          | <b>NEIGHBOURHOOD</b>             |
|                      | <b>EXT</b>             | <b>EXTREME</b>                   |