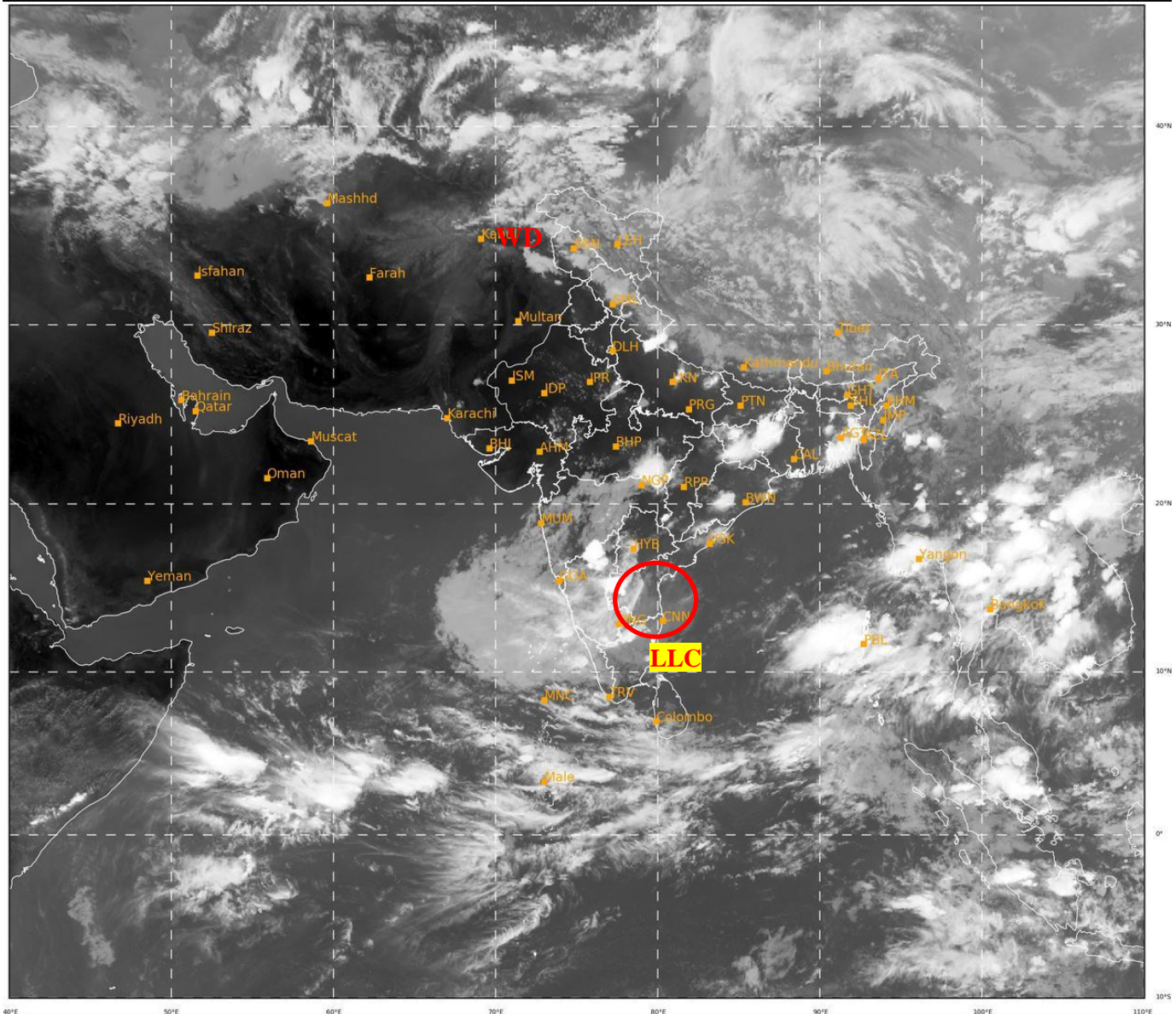




**SATELLITE BULLETIN BASED ON SATELLITE
IMAGERIES AND PRODUCTS**
12.05.2022 TIME 1200 UTC

SAT : INSAT-3D IMG
IMG TIR1 10.8 um
LIC Mercator

12-05-2022/(1200 to 1226) GMT
12-05-2022/(1730 to 1756) IST



IMD, DELHI

TCIN50 DEMS 121200

SATELLITE BULLETIN BASED ON INSAT-3D PIC OF 121200 UTC (.)

REGION COVERED BETWEEN LAT 50.0°N TO 30.0°S AND LONG 40.0°E TO 125.0°E (.)

SALIENT FEATURES:-

LLC OVER SOUTH COASTAL ANDHRA PRADESH & N/HOOD:-

VORTEX (ASANI) OVER SOUTH COASTAL ANDHRA PRADESH & N/HOOD WEAKENED INTO LOW PRESSURE AREA (LLC) OVER SAME REGION (.) ASSTD SCT TO BKN LOW/MED CLOUDS WITH EMBDD INT TO V INT CONVECTION OVER N RYLSM E NIK N TN (MINIMUM CTT MINUS 93 DEG C) AND MOD TO INT CONVTN OVER SW TLNGN S RYLSM REST KRNTK N KER (.)

WESTERN DISTURBANCE (WD):-

SCT MULTILAYERED CLOUDS OVER E AFGAN N PAK J&K LADAKH HP UTRKND TIBET ADJ CHINA & N/HOOD IN ASSW WD OVER THE AREA (.)

DUST:-

METEOSAT-8 RGB DUST PRODUCT AT 1200 UTC INDICATES DUST OVER NW RAJ ADJ SW HARY (.)

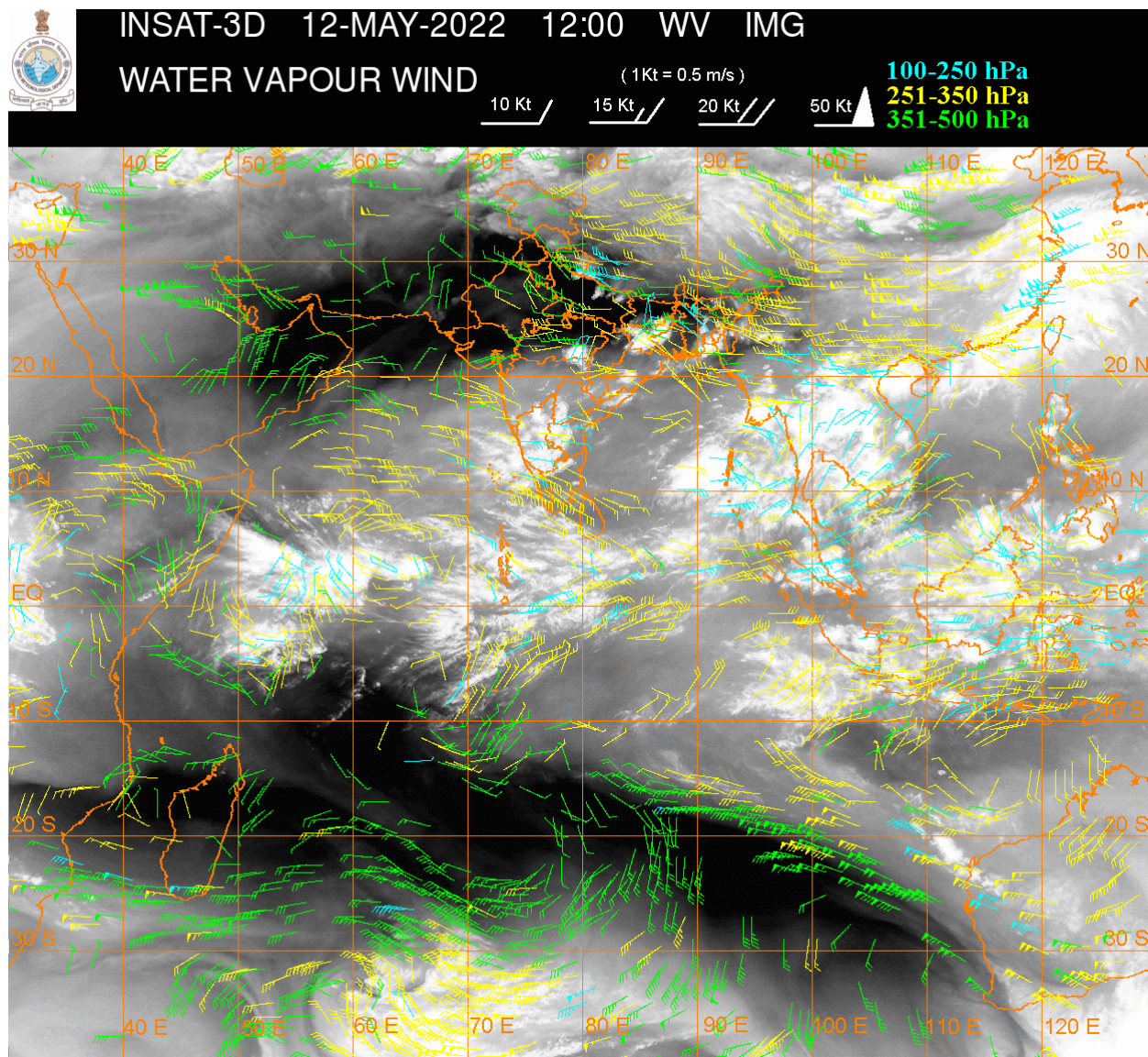
THUNDERSTORM / CONVECTIVE ACTIVITY:-

THUNDERSTORM / CONVECTIVE ACTIVITIES OBSERVED OVER LADAKH J&K HP UTRKND N UP S BHR JHRKND CHTGH S ORS NW GWB NE STATES SE MP E VID MRTHWD KRNTK SW TLNGN RYLSM N COTL AP N KER N TN LKSDP ILS ANDAMAN & NICOBAR ILS (.)

PRECIPITATION NOWCASTING:-

(BASED ON SCOPE NOWCASTING TOOL AT 1200 UTC AT A LEAD TIME OF 03 HRS (MM/HR):-

DATA NOT AVAILABLE (.)



CLOUDS DESCRIPTION WITHIN INDIA:-

NORTH:-

SCT LOW/MED CLOUDS WITH EMBDD INT TO V INT CONVTN OVER SE UTRKND N UP (.) SCT LOW/MED CLOUDS WITH EMBDD MOD TO INT CONVTN OVER REST UTRKND AND WK TO MOD CONVTN OVER LADAKH J&K HP SW PJB W HARY S UP (.) SCT LOW/MED CLOUDS OVER N PJB (.)

EAST:-

SCT TO BKN LOW/MED CLOUDS WITH EMBDD INT TO V INT CONVTN OVER SE BHR JHRKND EXT SW & EXT NE CHTGH NW GWB EXT S ASSAM N MIZO TRP & E BD (.) SCT LOW/MED CLOUDS WITH EMBDD MOD TO INT CONVTN OVER WC CHTGH S ORS W MEGHA W ASSAM (.) SCT LOW/MED CLOUDS WITH EMBDD WK TO MOD CONVTN OVER SW BHR REST CHTGH N ORS SHWB SKM REST NE STATES (.) SCT LOW/MED CLOUDS OVER N BHR REST GWB (.)

WEST:-

SCT TO BKN LOW/MED CLOUDS WITH EMBDD INT TO V INT CONVTN OVER SE MP E VID SW MRTHWD AND MOD TO INT CONVTN OVER REST MRTHWD (.) SCT LOW/MED CLOUDS WITH EMBDD WK TO MOD CONVTN OVER E RAJ REST MP REST MAHA GOA (.) SCT LOW/MED CLOUDS OVER W RAJ EXT NE GUJ (.)

SOUTH:-

SCT TO BKN LOW/MED CLOUDS WITH EMBDD INT TO V INT CONVTN OVER E NIK SIK N RYLSM N TN ANDAMAN ILS (.) SCT TO BKN LOW/MED CLOUDS WITH EMBDD MOD TO INT CONVTN OVER COTL KRNTK W NIK SW TLNGN N COTL AP S RYLSM N KER LKSDP ILS NICOBAR ILS AND WK TO MOD CONVTN OVER S KER S TN (.) SCT LOW/MED CLOUDS OVER E TLNGN S COTL AP (.)

ARABIAN SEA:-

SCT TO BKN LOW/MED CLOUDS WITH EMBDD MOD TO INT CONVTN OVER EC ARSEA SOUTH ARSEA AND COMORIN AREA (.)

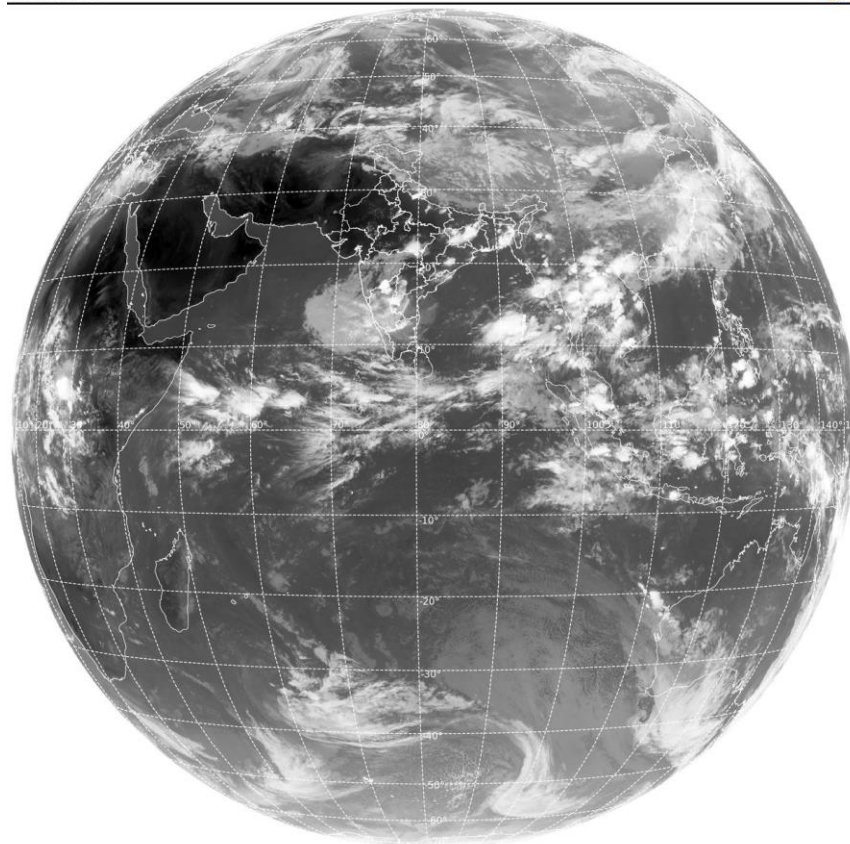
BAY OF BENGAL & ANDAMAN SEA:-

SCT TO BKN LOW/MED CLOUDS WITH EMBDD INT TO V INT CONVTN OVER EXT NE BAY & EC ADJ SE BAY ANDAMAN SEA GULF OF MARTABAN TENASSERIM COAST (.) SCT LOW/MED CLOUDS WITH EMBDD WK TO MOD CONVTN OVER REST BAY (.)

CLOUDS DESCRIPTION OUTSIDE INDIA:-

SAT : INSAT-3D IMG
Thermal Infrared1 Count 10.8 um
LIB FULL DISK

12-05-2022(1200 to 1226) GMT
12-05-2022(1730 to 1756) IST



300

973

IMD, DELHI

SCT LOW/MED CLOUDS WITH EMBDD MOD TO INT CONVTN OVER S SRI LANKA GULF OF MANNAR MALDIVES NEPAL BHUTAN TIBET CHINA YELLOW SEA E CHINA SEA TAIWAN MYANMAR THAILAND GULF OF THAILAND CAMBODIA LAOS VIETNAM HAINAN GULF OF TONKIN SUMATRA STR OF MALACCA MALAYSIA BORNEO SOUTH CHINA SEA JAVA ILS & SEA CELEBES ILS & SEA PHILIPPINES SULU SEA AND OVER INDIAN OCEAN BET LAT 5.0N TO 10.0S LONG 50.0E TO 105.0E (.)

TOO 12/1850 HRS IST=

NNNN

LEGEND:-

REGION	NORTH	J&K HP PJB HARY DLH UP UTRKND
	EAST	BHR JHRKND CHTGH OR WB SKM NORTH- EAST STATES
	WEST	RAJ MP GUJ MAHA GOA
	SOUTH	TLNGN AP KRNTK KER TN LKSDP ANDAMAN & NICOBAR ILS

CLOUD DISTRIBUTION	ISOL	ISOLATED (LESS THAN 25%)
	SCT	SCATTERED (25 TO 50%)
	BKN	BROKEN (51 TO 75%)
	SLD	SOLID (GREATER THAN 75%)
CLOUDS TOP TEMPERATURE	CTT	CLOUD TOP TEMPERATURE
CONVECTION	WK CONVTN	WEAK CONVECTION (CTT GREATER THAN -25°C)
	MOD CONVTN	MODERATE CONVECTION (CTT BETWEEN -25°C TO -40°C)
	INT CONVTN	INTENSE CONVECTION (CTT BETWEEN -41°C TO -70°C)
	V INT CONVTN	VERY INTENSE CONVECTION (CTT LESS THAN -70°C)
METEOROLOGICAL SUB-DIVISIONS, STATES & UNION TERRITORIES	ARUPR	ARUNACHAL PRADESH
	BHR	BIHAR
	CHTGH	CHHATTISGARH
	COTL AP	COASTAL ANDHRA PRADESH
	COTL KRNTK	COASTAL KARNATAKA
	COTL ORS	COASTAL ORISSA
	GUJ	GUJARAT
	GWB	GANGETIC WEST BENGAL
	HARY	HARYANA
	DLH	DELHI
	HP	HIMACHAL PRADESH
	J&K	JAMMU AND KASHMIR
	JHRKND	JHARKHAND
KER	KERALA	

	KKN	KONKAN
	LKSDP	LAKSHADWEEP
	M MAHA	MADHYA MAHARASHTRA
	MAHA	MAHARASHTRA
	MANI	MANIPUR
	MEGHA	MEGHALAYA
	MIZO	MIZORAM
	MP	MADHYA PRADESH
	MRTHWD	MARATHWADA
	NAGA	NAGALAND
	N COTL AP	NORTH COASTAL ANDHRA PRADESH
	NIK	NORTH INTERIOR KARNATAKA
	ORS	ORISSA
	PJB	PUNJAB
	RAJ	RAJASTHAN
	RYLSM	RAYALASEEMA
	SAU & KUTCH	SAURASHTRA & KUTCH
	SHWB	SUB-HIMALAYAN WEST BENGAL
	SIK	SOUTH INTERIOR KARNATAKA
	SKM	SIKKIM
	TLNGN	TELANGANA
	TN	TAMIL NADU
	TRP	TRIPURA
	UP	UTTAR PRADESH
	UTRKN	UTTARAKHAND
	VID	VIDHARBHA
	SHWB	SUB HIMALAYAN WEST BENGAL
	GWB	GANGETIC WEST BENGAL
	ARSEA	ARABIAN SEA
	ILS	ISLANDS
MISCELLANEOUS	ASSW	IN ASSOCIATION WITH
	ASSTD	ASSOCIATED
	LLC	LOW LEVEL CIRCULATION
	EMBDD	EMBEDDED
	N/HOOD	NEIGHBOURHOOD
	EXT	EXTREME