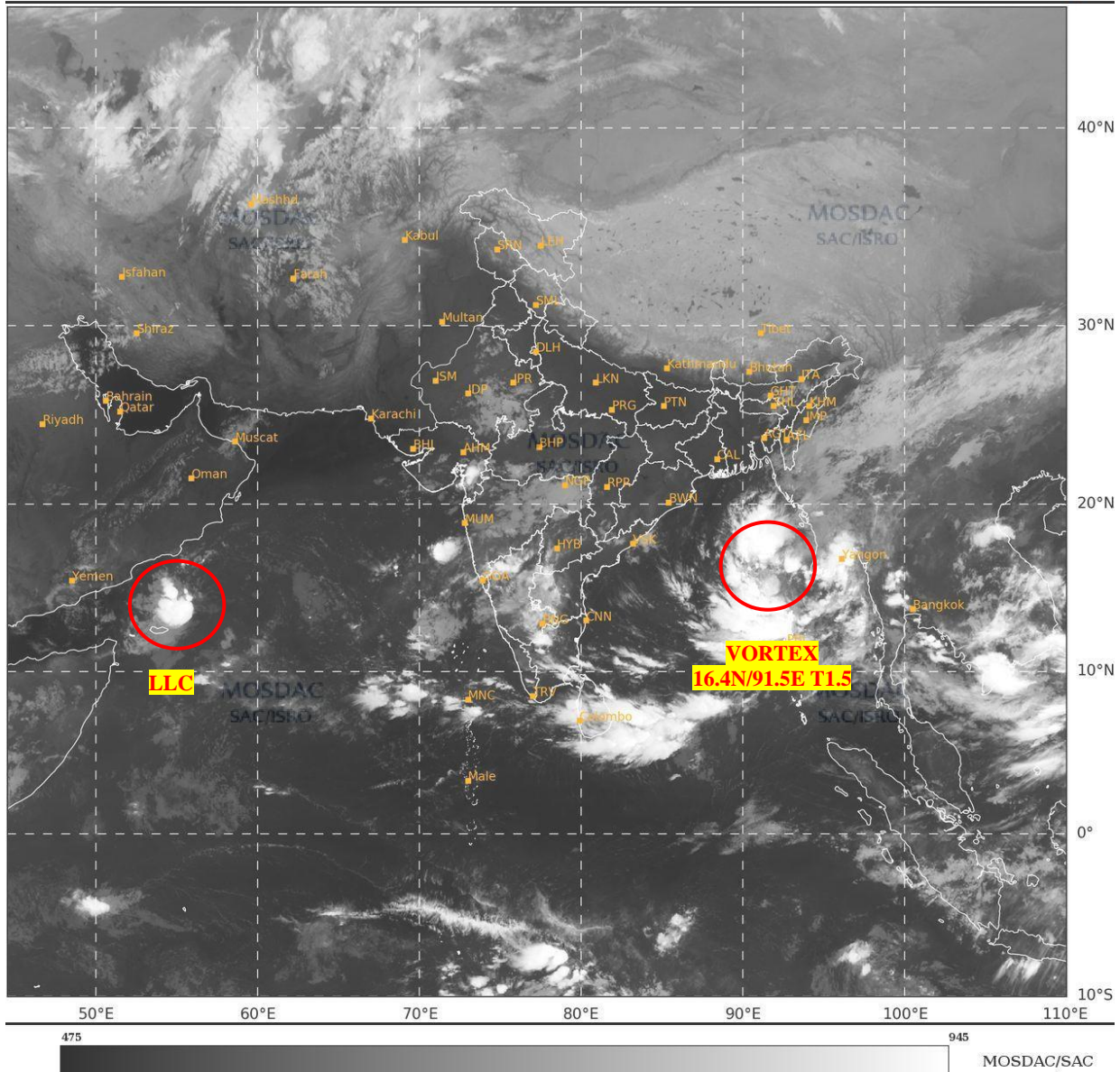




**SATELLITE BULLETIN BASED ON SATELLITE  
IMAGERIES AND PRODUCTS**  
**22.10.2024 TIME 0000 UTC**

SAT : INSAT-3DR IMG  
IMG\_TIR1 10.8 um  
LIC Mercator

22-10-2024/(0015 to 0042) GMT  
22-10-2024/(0545 to 0612) IST



TCIN50 DEMS 220000

SATELLITE BULLETIN BASED ON INSAT-3DR PIC OF 220015 UTC (.)

REGION COVERED BETWEEN LAT 50.0°N TO 35.0°S AND LONG 40.0°E TO 125.0°E (.)

**SALIENT FEATURES:-**

**VORTEX (D)OVER EAST-CENTRAL BAY:-**

VORTEX OVER EC BAY HAS FURTHER INTENSIFIED AND NOW LAY CENTERED WITHIN HALF A DEGREE OF **16.4N/91.5E** (.) INTENSITY **T1.5** (.) ASSTD SCT TO BKN LOW/MED CLOUDS WITH EMBDD INT TO V INT CONVTN OVER NE BAY CENTRAL BAY SOUTH BAY NORTH ANDAMAN SEA & N/HOOD (MIMIMUM **CTT MINUS 80-90** DEG CEL) (.)

**LLC OVER WEST-CENTRAL ARABIAN SEA:-**

SCT LOW/MED CLOUDS WITH EMBDD INT TO V INT CONVTN OVER WC ARSEA BET LAT 12.0N TO 15.5N LONG 52.0E TO 55.0E IN ASSW LOW LEVEL CIRCULATION (LLC) OVER THE AREA (MIMIMUM CTT MINUS 70-75 DEG CEL) (.)

**CONVECTIVE / THUNDERSTORM ACTIVITY:-**

**INTENSE TO VERY INTENSE CONVECTIVE / THUNDERSTORM ACTIVITY OBSERVED OVER NIK SIK RYLSM TN ANDAMAN & NICOBAR ILS (MINIMUM **CTT MINUS 50-70 DEG CEL**) (.)**

**MODERATE TO INTENSE CONVECTIVE / THUNDERSTORM ACTIVITY OBSERVED OVER SE GUJ KKN MRTHWD RYLSM S TLNGN (MINIMUM **CTT MINUS 50-70 DEG CEL**) (.)**

**CLOUDS DESCRIPTION WITHIN INDIA:-**

**NORTH:-**

**SCT LOW/MED CLOUDS WITH EMBDD ISOL WK TO MOD CONVTN OVER LADAKH J&K N HP N UTRKND SW UP (.) ISOL LOW/MED CLOUDS OVER S HP S UTRKND (.)**

**EAST:-**

**SCT LOW/MED CLOUDS WITH EMBDD WK TO MOD CONVTN OVER S CHTGH SKM ARUPR (.) ISOL LOW/MED CLOUDS OVER N CHTGH N ORS BHR JHRKND GWB SHWB REST NE STATES (.)**

**WEST:-**

**SCT LOW/MED CLOUDS WITH EMBDD MOD TO INT CONVTN OVER MRTHWD SE GUJ MRTHWD AND WK TO MOD CONVTN OVER RAJ REST GUJ S MP REST MAHA (.) SCT LOW/MED CLOUDS OVER REST MP (.)**

**SOUTH:-**

**SCT LOW/MED CLOUDS WITH EMBDD INT TO V INT CONVTN OVER ANDAMAN ILS (.) SCT LOW/MED CLOUDS WITH EMBDD MOD TO INT CONVTN OVER NIK SIK RYLSM S TLNGN TN AND WK TO MOD CONVTN OVER KER N TLNGN LKSDP ILS (.)**

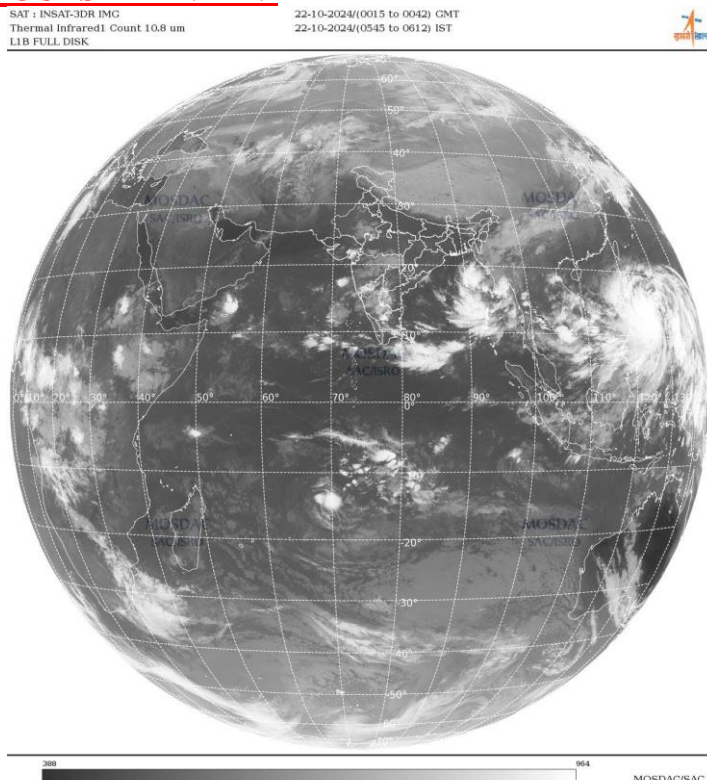
**ARABIAN SEA:-**

**SCT LOW/MED CLOUDS WITH EMBDD INT TO V INT CONVTN OVER CENTRAL ARSEA (MINIMUM **CTT MINUS 75 DEG CEL**) (.) SCT LOW/MED CLOUDS WITH EMBDD MOD TO INT CONVTN OVER SE ARSEA LKSDP ILS AREA & COMORIN AREA(.)**

**BAY OF BENGAL & ANDAMAN SEA:-**

**SCT LOW/MED CLOUDS WITH EMBDD INT TO V INT CONVTN OVER N BAY CENTRAL BAY SOUTH BAY NORTH ANDAMAN SEA ARAKAN COAST TENASSERIM COAST GULF OF MARTABAN (MINIMUM **CTT MINUS 80-85 DEG CEL**) (.) SCT LOW/MED CLOUDS WITH EMBDD MOD TO INT CONVTN OVER REST BAY (.)**

**CLOUDS DESCRIPTION OUTSIDE INDIA:-**



SCT LOW/MED CLOUDS WITH EMBDD MOD TO INT CONVTN OVER SRI LANKA PALK STR GULF OF MANNAR NEPAL TIBET CHINA YELLOW SEA MYANMAR THAILAND GULF OF THAILAND CAMBODIA LAOS VIETNAM GULF OF TONKIN SUMATRA STR OF MALACCA MALAYSIA BORNEO SOUTH CHINA SEA JAVA ILS & SEA CELEBES ILS & SEA PHILIPPINES SULU SEA MADAGASCAR AND OVER INDIAN OCEAN BET EQ TO LAT 15.0N LONG 69.0E TO 90.0E (.)

TOO 22/0750 HRS IST=

NNNN

**LEGEND:-**

|  |                           |  |
|--|---------------------------|--|
| <b>REGION</b>  | <b>NORTH</b>              | <b>J&amp;K HP PJB HARY DLH UP UTRKND</b>                     |
|  | <b>EAST</b>               | <b>BHR JHRKND CHTGH ORS WB SKM NORTH- EAST STATES</b>        |
|  | <b>WEST</b>               | <b>RAJ MP GUJ MAHA GOA</b>                                   |
|  | <b>SOUTH</b>              | <b>TLNGN AP KRNTK KER TN LKSDP ANDAMAN &amp; NICOBAR ILS</b> |
| <b>CLOUD DISTRIBUTION</b>  | <b>ISOL</b>               | <b>ISOLATED (LESS THAN 25%)</b>                              |
|  | <b>SCT</b>                | <b>SCATTERED (25 TO 50%)</b>                                 |
|  | <b>BKN</b>                | <b>BROKEN (51 TO 75%)</b>                                    |
|  | <b>SLD</b>                | <b>SOLID (GREATER THAN 75%)</b>                              |
| <b>CLOUDS TOP TEMPERATURE</b>  | <b>CTT</b>                | <b>CLOUD TOP TEMPERATURE</b>                                 |
| <b>CONVECTION</b>  | <b>WK CONVTN</b>          | <b>WEAK CONVECTION (CTT GREATER THAN -25°C)</b>              |
|  | <b>MOD CONVTN</b>         | <b>MODERATE CONVECTION (CTT BETWEEN -25°C TO -40°C)</b>      |
|  | <b>INT CONVTN</b>         | <b>INTENSE CONVECTION (CTT BETWEEN -41°C TO -70°C)</b>       |
|  | <b>V INT CONVTN</b>       | <b>VERY INTENSE CONVECTION (CTT LESS THAN -70°C)</b>         |
| <b>METEOROLOGICAL SUB- DIVISIONS, STATES &amp; UNION TERRITORIES</b> | <b>ARUPR</b>              | <b>ARUNACHAL PRADESH</b>                                     |
|  | <b>BHR</b>                | <b>BIHAR</b>   |
|  | <b>CHTGH</b>              | <b>CHHATTISGARH</b>  |
|  | <b>COTL AP</b>            | <b>COASTAL ANDHRA PRADESH</b>                                |
|  | <b>COTL KRNTK</b>         | <b>COASTAL KARNATAKA</b>                                     |
|  | <b>COTL ORS</b>           | <b>COASTAL ORISSA</b>  |
|  | <b>GUJ</b>                | <b>GUJARAT</b>   |
|  | <b>GWB</b>                | <b>GANGETIC WEST BENGAL</b>                                  |
|  | <b>HARY</b>               | <b>HARYANA</b>   |
|  | <b>DLH</b>                | <b>DELHI</b>   |
|  | <b>HP</b>                 | <b>HIMACHAL PRADESH</b>                                      |
|  | <b>J&amp;K</b>            | <b>JAMMU AND KASHMIR</b>                                     |
|  | <b>JHRKND</b>             | <b>JHARKHAND</b>   |
|  | <b>KER</b>                | <b>KERALA</b>  |
|  | <b>KKN</b>                | <b>KONKAN</b>  |
|  | <b>LKSDP</b>              | <b>LAKSHADWEEP</b>   |
| <b>M MAHA</b>  | <b>MADHYA MAHARASHTRA</b> |  |
| <b>MAHA</b>  | <b>MAHARASHTRA</b>        |  |

|                      |                        |                                     |
|----------------------|------------------------|-------------------------------------|
|                      | <b>MANI</b>            | <b>MANIPUR</b>                      |
|                      | <b>MEGHA</b>           | <b>MEGHALAYA</b>                    |
|                      | <b>MIZO</b>            | <b>MIZORAM</b>                      |
|                      | <b>MP</b>              | <b>MADHYA PRADESH</b>               |
|                      | <b>MRTHWD</b>          | <b>MARATHWADA</b>                   |
|                      | <b>NAGA</b>            | <b>NAGALAND</b>                     |
|                      | <b>N COTL AP</b>       | <b>NORTH COASTAL ANDHRA PRADESH</b> |
|                      | <b>NIK</b>             | <b>NORTH INTERIOR KARNATAKA</b>     |
|                      | <b>ORS</b>             | <b>ORISSA</b>                       |
|                      | <b>PJB</b>             | <b>PUNJAB</b>                       |
|                      | <b>RAJ</b>             | <b>RAJASTHAN</b>                    |
|                      | <b>RYLSM</b>           | <b>RAYALASEEMA</b>                  |
|                      | <b>SAU &amp; KUTCH</b> | <b>SAURASHTRA &amp; KUTCH</b>       |
|                      | <b>SHWB</b>            | <b>SUB-HIMALAYAN WEST BENGAL</b>    |
|                      | <b>SIK</b>             | <b>SOUTH INTERIOR KARNATAKA</b>     |
|                      | <b>SKM</b>             | <b>SIKKIM</b>                       |
|                      | <b>TLNGN</b>           | <b>TELANGANA</b>                    |
|                      | <b>TN</b>              | <b>TAMIL NADU</b>                   |
|                      | <b>TRP</b>             | <b>TRIPURA</b>                      |
|                      | <b>UP</b>              | <b>UTTAR PRADESH</b>                |
|                      | <b>UTRKND</b>          | <b>UTTARAKHAND</b>                  |
|                      | <b>VID</b>             | <b>VIDHARBHA</b>                    |
|                      | <b>SHWB</b>            | <b>SUB HIMALAYAN WEST BENGAL</b>    |
|                      | <b>GWB</b>             | <b>GANGETIC WEST BENGAL</b>         |
|                      | <b>ARSEA</b>           | <b>ARABIAN SEA</b>                  |
|                      | <b>ILS</b>             | <b>ISLANDS</b>                      |
| <b>MISCELLANEOUS</b> | <b>ASSW</b>            | <b>IN ASSOCIATION WITH</b>          |
|                      | <b>ASSTD</b>           | <b>ASSOCIATED</b>                   |
|                      | <b>LLC</b>             | <b>LOW LEVEL CIRCULATION</b>        |
|                      | <b>EMBDD</b>           | <b>EMBEDDED</b>                     |
|                      | <b>N/HOOD</b>          | <b>NEIGHBOURHOOD</b>                |
|                      | <b>EXT</b>             | <b>EXTREME</b>                      |