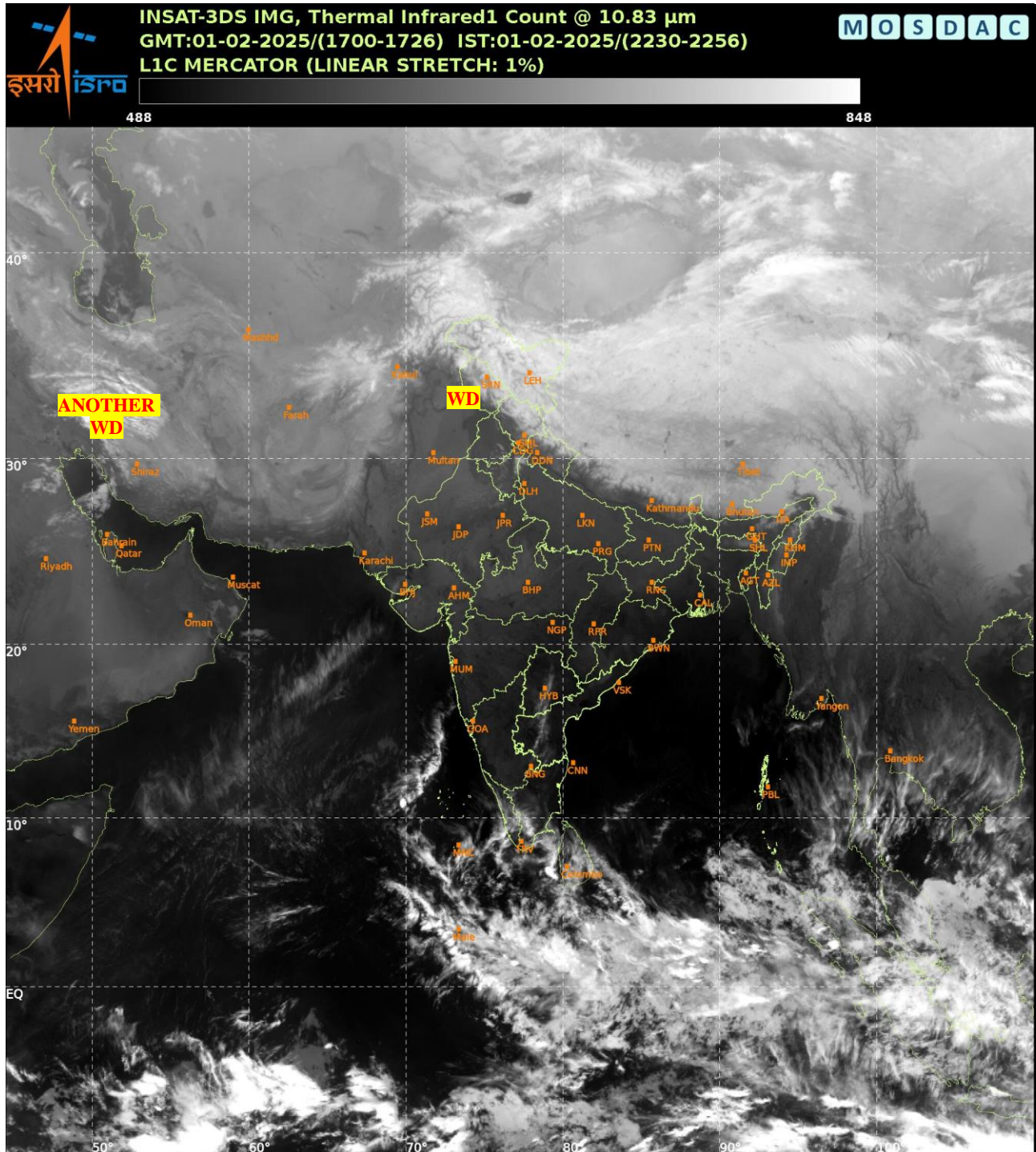




**SATELLITE BULLETIN BASED ON SATELLITE
IMAGERIES AND PRODUCTS**
01.02.2025 TIME 1800 UTC



TCIN50 DEMS 011800

SATELLITE BULLETIN BASED ON INSAT-3DS PIC OF 011700 UTC (.)

REGION COVERED BETWEEN LAT 50.0°N TO 35.0°S AND LONG 40.0°E TO 125.0°E (.)

SALIENT FEATURES:-

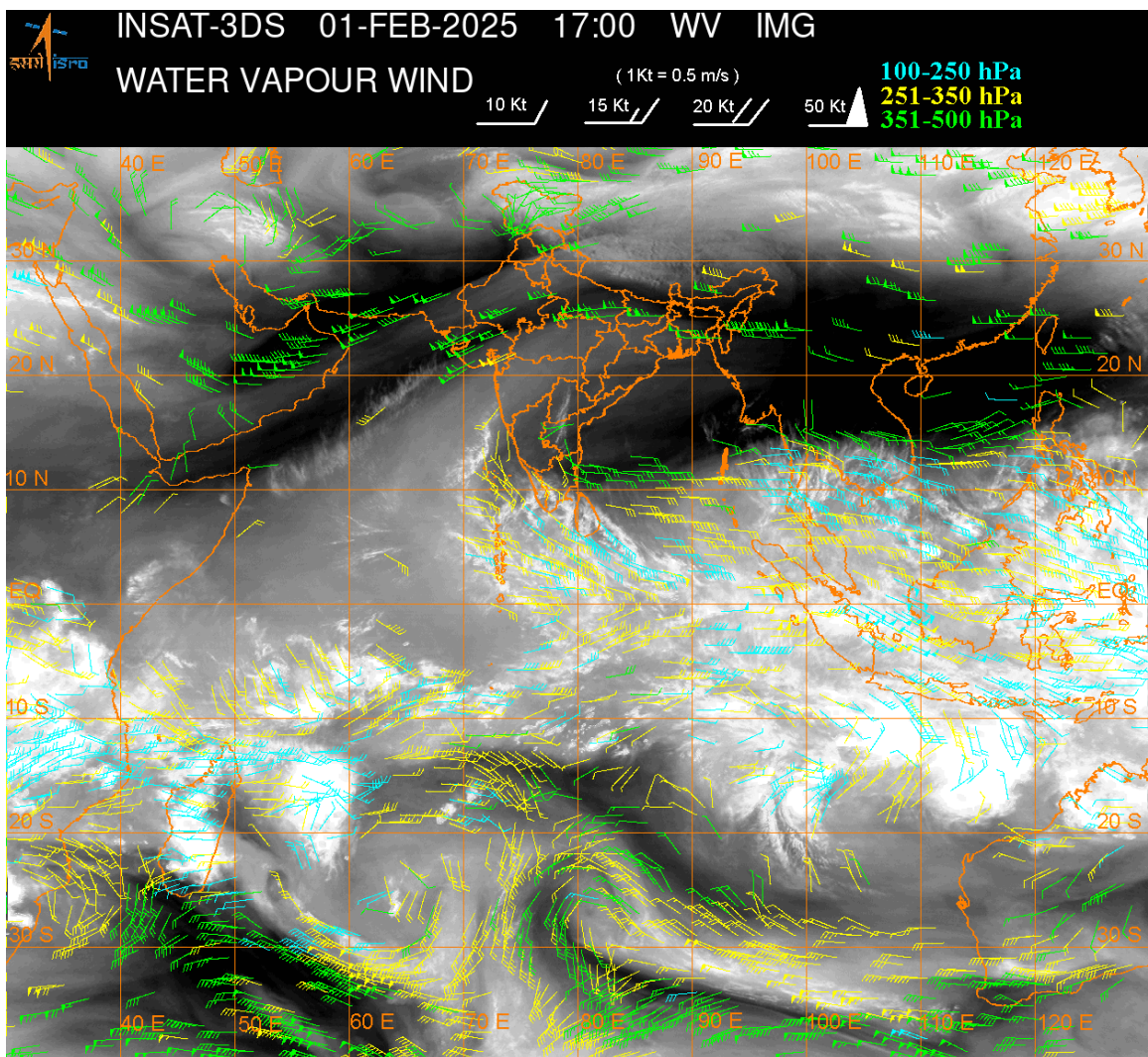
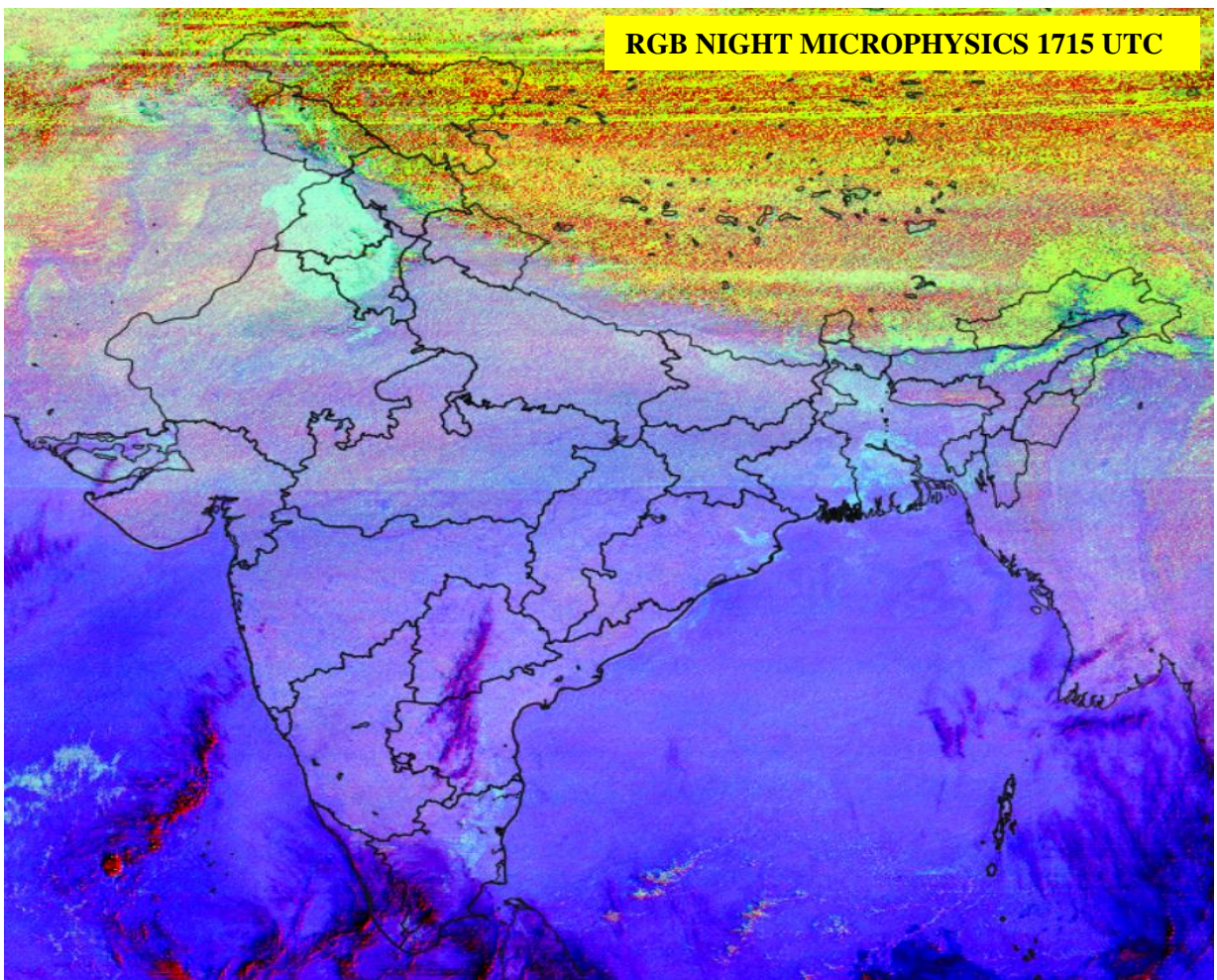
WESTERN DISTURBANCE:-

SCT MULTILAYERED CLOUDS OVER N PAK LADAKH J&K HP UTRKND TIBET ADJ CHINA IN ASSW **WD** OVER THE AREA (.)

SCT MULTILAYERED CLOUDS OVER W IRAN AND N/HOOD IN ASSW **ANOTHER WD** OVER THE AREA (.)

FOG / LOW CLOUDS:-

RGB COMPOSITE NIGHT MICROPHYSICS IMAGERY OF INSAT-3DR AT 1715 UTC INDICATES SCT TO BKN FOG / LOW CLOUDS OVER PJB HARY N RAJ N BHR SHWB NE ORS E GWB TRP BD S COTL AP & NE TN (.)



CLOUDS DESCRIPTION WITHIN INDIA:-

NORTH:-

SCT LOW/MED CLOUDS WITH EMBDD WK TO MOD CONVTN OVER LADAKH J&K HP N UTRKND AND ISOL WK CONVTN OVER E PJB HARY EXT NW UP (.) ISOL LOW/MED CLOUDS OVER S UTRKND DLH (.)

EAST:-

SCT LOW/MED CLOUDS WITH EMBDD ISOL WK CONVTN OVER SKM MEGHA ASSAM ARUPR NAGA (.) ISOL TO SCT LOW/MED CLOUDS OVER SHWB REST NE STATES (.)

WEST:-

ISOL TO SCT LOW/MED CLOUDS OVER N RAJ GUJ KKN MADHYA MAHA (.)

SOUTH:-

SCT LOW/MED CLOUDS WITH EMBDD ISOL WK TO MOD CONVTN OVER EXT SE SIK S TLNGN RYLSM KER TN LKSDP ILS AREA NICOBAR ILS AREA (.) SCT LOW/MED CLOUDS OVER S COTL AP ANDAMAN ILS AREA (.)

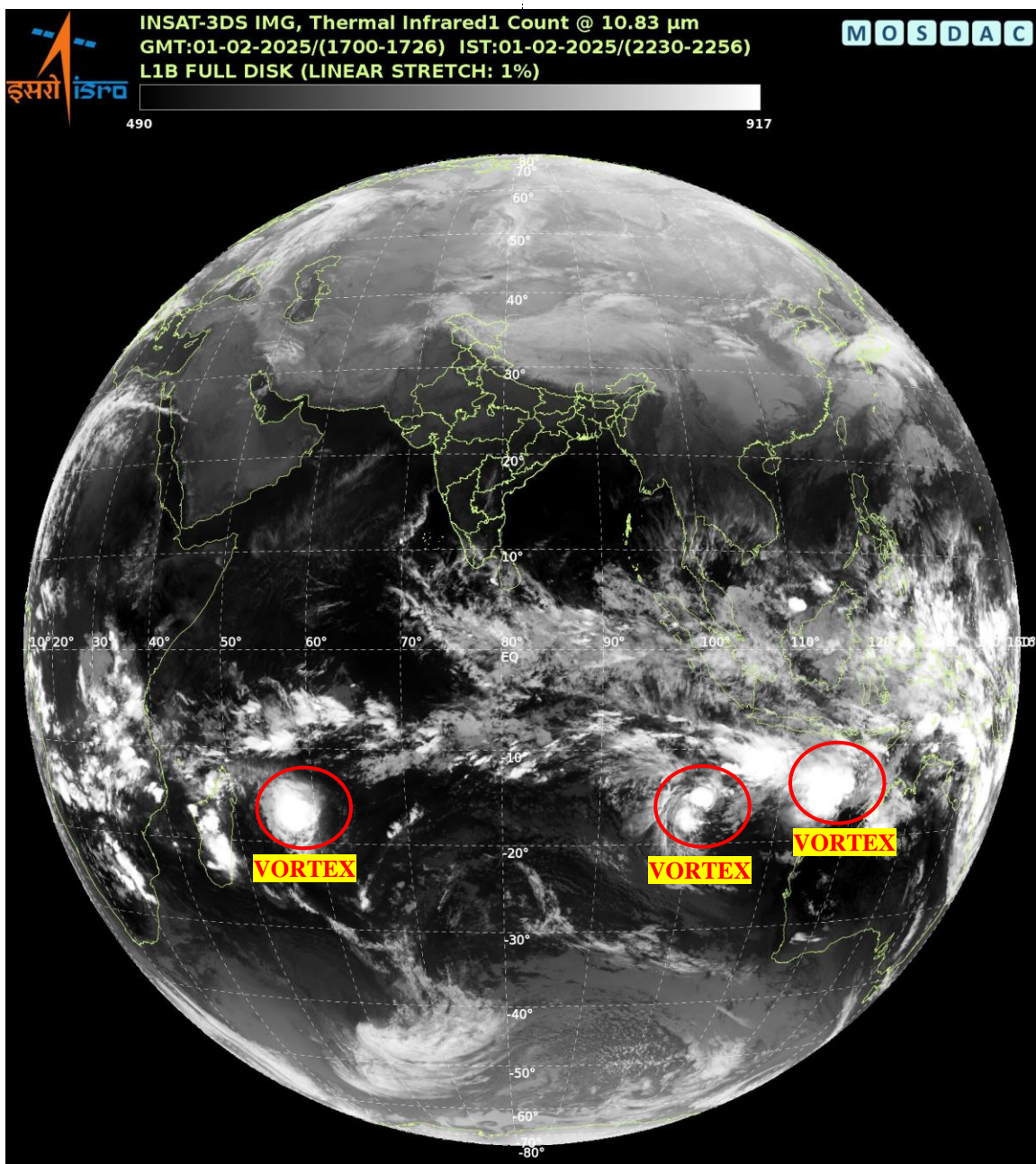
ARABIAN SEA:-

SCT LOW/MED CLOUDS WITH EMBDD MOD TO INT CONVTN OVER SE ARSEA MALDIVES & COMORIN AREA (.) SCT LOW/MED CLOUDS WITH EMBDD ISOL WK TO MOD CONVTN OVER SOUTH PARTS OF NORTH ARSEA CENTRAL ARSEA LKSDP ILS AREA AND SW ARSEA (.)

BAY OF BENGAL & ANDAMAN SEA:-

SCT LOW/MED CLOUDS WITH EMBDD ISOL WK TO MOD CONVTN OVER EC & SOUTH BAY AND ANDAMAN SEA (.)

CLOUDS DESCRIPTION OUTSIDE INDIA:-



VORTEX OVER SOUTH INDIAN OCEAN:-

VORTEX OVER SOUTH INDIAN OCEAN (AREA D60 ADJ D55) CENTERED NEAR 17.8S / 60.4E (.) INTENSITY T2.0/2.0 (.) MAXIMUM SUSTAINED WINDS 28-33 KTS (.) ASSTD SCT TO BKN LOW/MED CLOUDS WITH EMBDD INT TO V INT CONVTN OVER AREA BET LAT 13.0S TO 22.0S LONG 54.0E TO 62.0E (.)

VORTEX OVER SOUTH INDIAN OCEAN:-

VORTEX OVER SOUTH INDIAN OCEAN (AREA G25) CENTERED NEAR 15.5S / 101.8E (.) INTENSITY T2.0/2.0 (.) MAXIMUM SUSTAINED WINDS 28-33 KTS (.) ASSTD SCT TO BKN LOW/MED CLOUDS WITH EMBDD INT TO V INT CONVTN OVER AREA BET LAT 13.0S TO 20.0S LONG 97.0E TO 103.0E (.)

VORTEX OVER SOUTH INDIAN OCEAN:-

VORTEX OVER SOUTH INDIAN OCEAN (AREA G30) CENTERED NEAR 14.2S / 119.1E (.) INTENSITY T2.0/2.0 (.) MAXIMUM SUSTAINED WINDS 28-33 KTS (.) ASSTD SCT TO BKN LOW/MED CLOUDS WITH EMBDD INT TO V INT CONVTN OVER AREA BET LAT 10.0S TO 18.0S LONG 112.0E TO 120.0E (.)

SCT LOW/MED CLOUDS WITH EMBDD MOD TO INT CONVTN OVER SRI LANKA GULF OF MANNAR MALDIVES TIBET CHINA YELLOW SEA EAST CHINA SEA SOUTH THAILAND GULF OF THAILAND CAMBODIA SOUTH VIETNAM SUMATRA STR OF MALACCA MALAYSIA BORNEO SOUTH CHINA SEA JAVA ILS & SEA CELEBES ILS & SEA PHILIPPINES SULU SEA MADAGASCAR MOZAMBIQUE CHANNEL AND OVER INDIAN OCEAN BET LAT 5.0N TO 30.0S LONG 40.0E TO 125.0E (.)

TOO 01/2330 EF=

NNNN

LEGEND:-

REGION	NORTH	J&K HP PJB HARY DLH UP UTRKND
	EAST	BHR JHRKND CHTGH ORS WB SKM NORTH- EAST STATES
	WEST	RAJ MP GUJ MAHA GOA
	SOUTH	TLNGN AP KRNTK KER TN LKSDP ANDAMAN & NICOBAR ILS
CLOUD DISTRIBUTION	ISOL	ISOLATED (LESS THAN 25%)
	SCT	SCATTERED (25 TO 50%)
	BKN	BROKEN (51 TO 75%)
	SLD	SOLID (GREATER THAN 75%)
CLOUDS TOP TEMPERATURE	CTT	CLOUD TOP TEMPERATURE
CONVECTION	WK CONVTN	WEAK CONVECTION (CTT GREATER THAN -25°C)
	MOD CONVTN	MODERATE CONVECTION (CTT BETWEEN -25°C TO -40°C)
	INT CONVTN	INTENSE CONVECTION (CTT BETWEEN -41°C TO -70°C)
	V INT CONVTN	VERY INTENSE CONVECTION (CTT LESS THAN -70°C)
METEOROLOGICAL SUB- DIVISIONS, STATES & UNION TERRITORIES	ARUPR	ARUNACHAL PRADESH
	BHR	BIHAR
	CHTGH	CHHATTISGARH
	COTL AP	COASTAL ANDHRA PRADESH
	COTL KRNTK	COASTAL KARNATAKA
	COTL ORS	COASTAL ORISSA
	GUJ	GUJARAT
	GWB	GANGETIC WEST BENGAL
HARY	HARYANA	

	DLH	DELHI
	HP	HIMACHAL PRADESH
	J&K	JAMMU AND KASHMIR
	JHRKND	JHARKHAND
	KER	KERALA
	KKN	KONKAN
	LKSDP	LAKSHADWEEP
	M MAHA	MADHYA MAHARASHTRA
	MAHA	MAHARASHTRA
	MANI	MANIPUR
	MEGHA	MEGHALAYA
	MIZO	MIZORAM
	MP	MADHYA PRADESH
	MRTHWD	MARATHWADA
	NAGA	NAGALAND
	N COTL AP	NORTH COASTAL ANDHRA PRADESH
	NIK	NORTH INTERIOR KARNATAKA
	ORS	ORISSA
	PJB	PUNJAB
	RAJ	RAJASTHAN
	RYLSM	RAYALASEEMA
	SAU & KUTCH	SAURASHTRA & KUTCH
	SHWB	SUB-HIMALAYAN WEST BENGAL
	SIK	SOUTH INTERIOR KARNATAKA
	SKM	SIKKIM
	TLNGN	TELANGANA
	TN	TAMIL NADU
	TRP	TRIPURA
	UP	UTTAR PRADESH
	UTRKND	UTTARAKHAND
	VID	VIDHARBHA
	SHWB	SUB HIMALAYAN WEST BENGAL
	GWB	GANGETIC WEST BENGAL
	ARSEA	ARABIAN SEA
	ILS	ISLANDS
MISCELLANEOUS	ASSW	IN ASSOCIATION WITH
	ASSTD	ASSOCIATED
	LLC	LOW LEVEL CIRCULATION
	EMBDD	EMBEDDED
	N/HOOD	NEIGHBOURHOOD
	EXT	EXTREME