



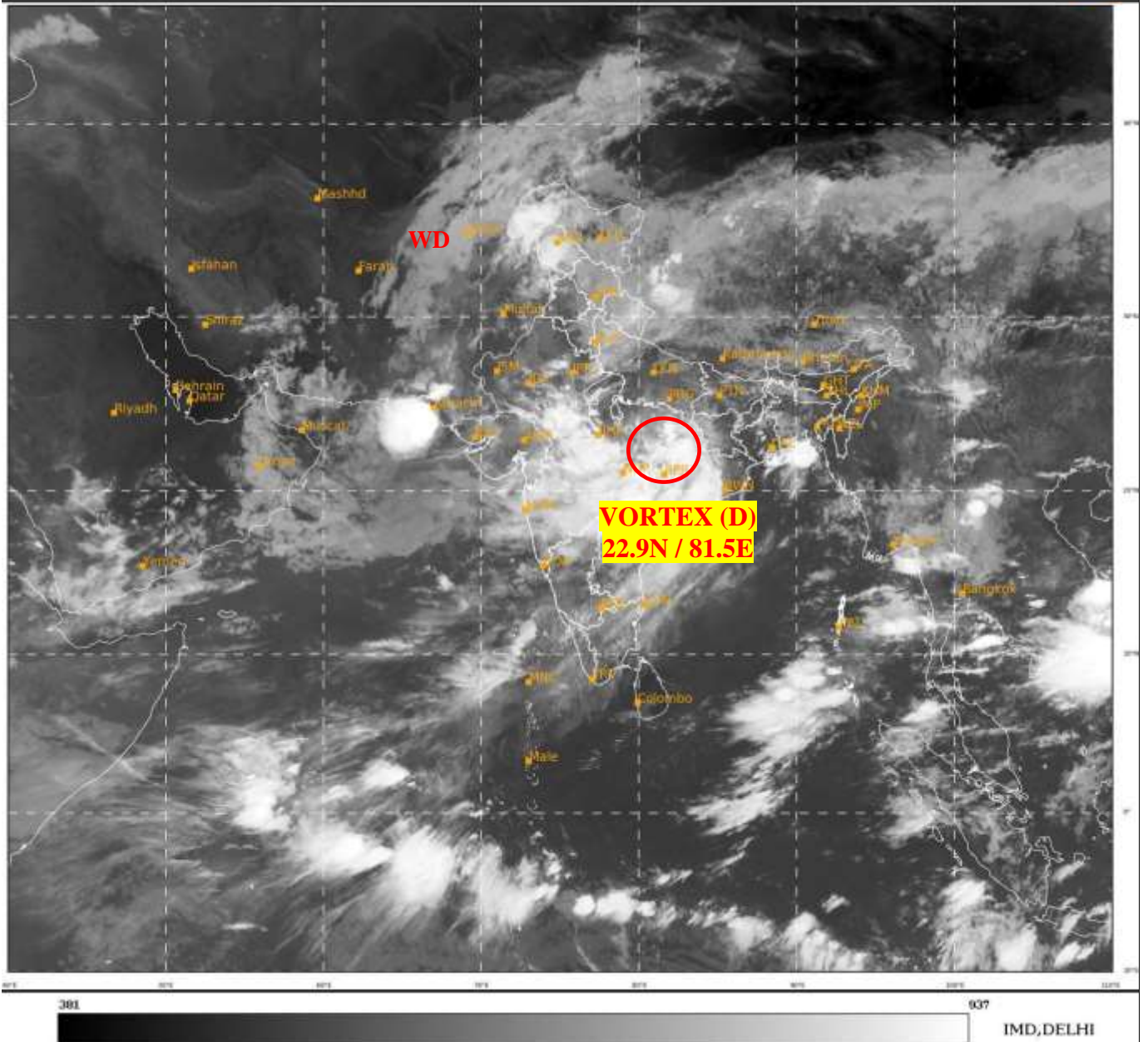
भारत मौसम विज्ञान विभाग
पृथ्वी विज्ञान मंत्रालय
India Meteorological Department
Ministry of Earth Sciences



**SATELLITE BULLETIN BASED ON SATELLITE
IMAGERIES AND PRODUCTS**
15.08.2022 TIME 0300 UTC

SAT : INSAT-3D IMG
IMG TIR1 10.8 um
LIC Mercator

15-08-2022/(0300 to 0327) GMT
15-08-2022/(0830 to 0857) IST



TCIN50 DEMS 150300

SATELLITE BULLETIN BASED ON INSAT-3D PIC OF 150300 UTC (.)

REGION COVERED BETWEEN LAT 50.0°N TO 30.0°S AND LONG 40.0°E TO 125.0°E (.)

SALIENT FEATURES:-

VORTEX (D) OVER EAST MP & N/HOOD:-

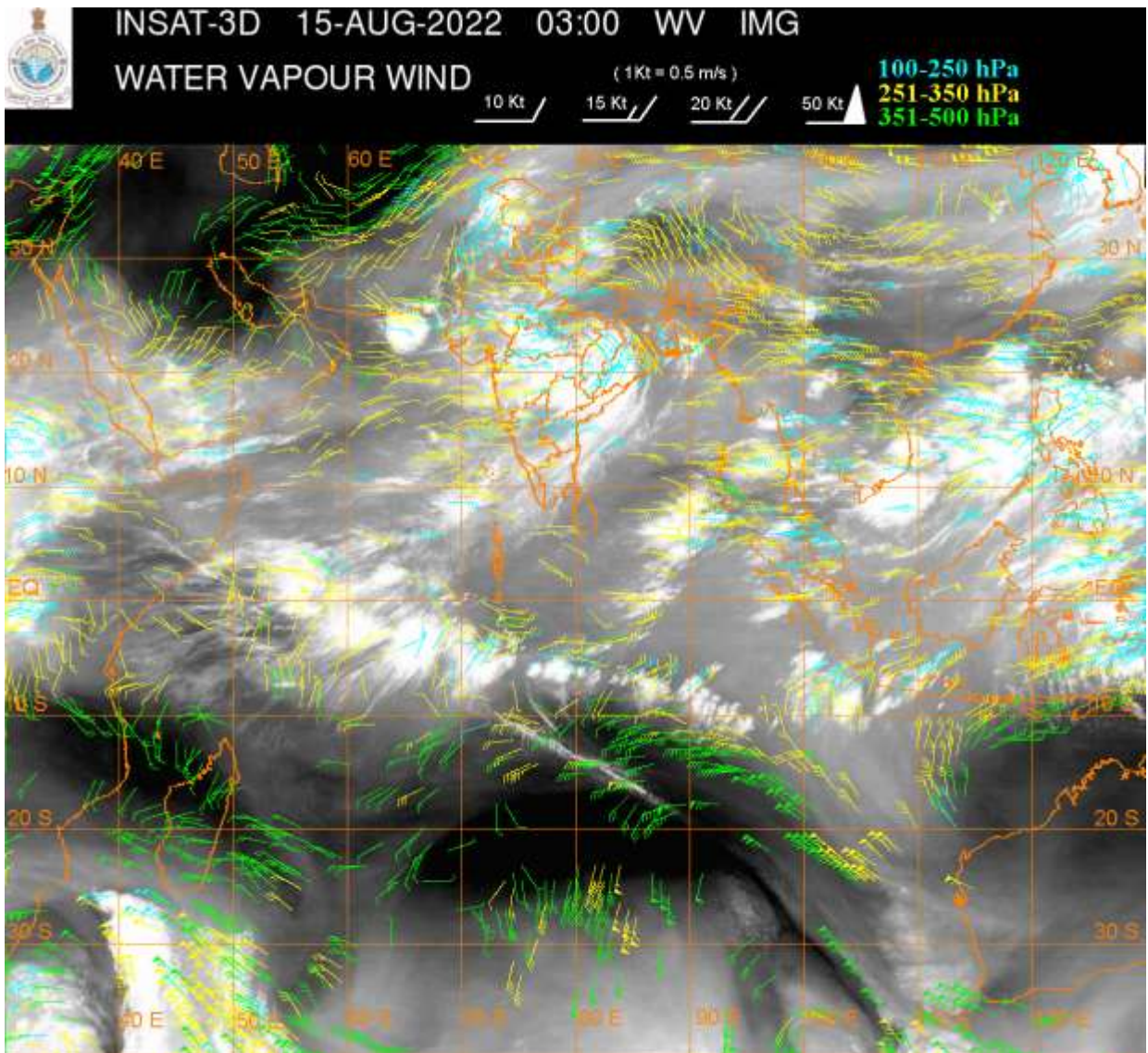
VORTEX (D) OVER EAST MP & N/HOOD CENTERED WITHIN HALF A DEGREE OF **22.9N / 81.5E** (.) ASSTD SCT TO BKN LOW/MED CLOUDS WITH EMBDD INT TO V INT CONVTN OVER CHTGH ADJ E MP ORS (.) MINIMUM CTT MINUS **85** DEG C (.)

WESTERN DISTURBANCE (WD):-

SCT MULTILAYERED CLOUDS OVER AFGAN PAK & N/HOOD IN ASSW **WD** OVER THE AREA (.)

INTENSE CONVECTIVE CLOUDS:-

INTENSE CONVECTIVE CLOUDS OBSERVED OVER J&K NW LADAKH NE JHRKND E GWB E RAJ MP MAHA NIK TLNGN N COTL AP LKSDP ILS (.)



CLOUDS DESCRIPTION WITHIN INDIA:-

NORTH:-

SCT TO BKN LOW/MED CLOUDS WITH EMBDD MOD TO INT CONVTN OVER J&K NW LADAKH (.) SCT TO BKN LOW/MED CLOUDS WITH EMBDD WK TO MOD CONVTN OVER REST LADAKH HP UTRKND PJB HARY DLH UP (.)

EAST:-

SCT TO BKN LOW/MED CLOUDS WITH EMBDD INT TO V INT CONVTN OVER N CHTGH (MINIMUM CTT MINUS 88 DEG C) (.) SCT TO BKN LOW/MED CLOUDS WITH EMBDD MOD TO INT CONVTN OVER NE JHRKND S CHTGH NW&S ORS E GWB S BD AND WK TO MOD CONVTN OVER BHR W JHRKND NE ORS W GWB SHWB SKM ARUPR N ASSAM W MEGHA (.) SCT LOW/MED CLOUDS OVER SE JHRKND REST NE STATES (.)

WEST:-

SCT TO BKN LOW/MED CLOUDS WITH EMBDD INT TO V INT CONVTN OVER SE RAJ SW MP VID (MINIMUM CTT MINUS 75 DEG C) (.) SCT TO BKN LOW/MED CLOUDS WITH EMBDD MOD TO INT CONVTN OVER NE RAJ REST MP MRTHWD MADHYA MAHA N KKN (.) SCT LOW/MED CLOUDS WITH EMBDD WK TO MOD CONVTN OVER W RAJ GUJ S KKN & GOA (.)

SOUTH:-

SCT TO BKN LOW/MED CLOUDS WITH EMBDD INT TO V INT CONVTN OVER N TLNGN (MINIMUM CTT MINUS 75 DEG C) (.) SCT TO BKN LOW/MED CLOUDS WITH EMBDD MOD TO INT CONVTN OVER NORTH NIK S TLNGN COTL AP LKSDP ILS (.) SCT LOW/MED CLOUDS WITH EMBDD WK TO MOD CONVTN OVER REST KRNTK RYLSM KER TN ANDAMAN & NICOBAR ILS (.)

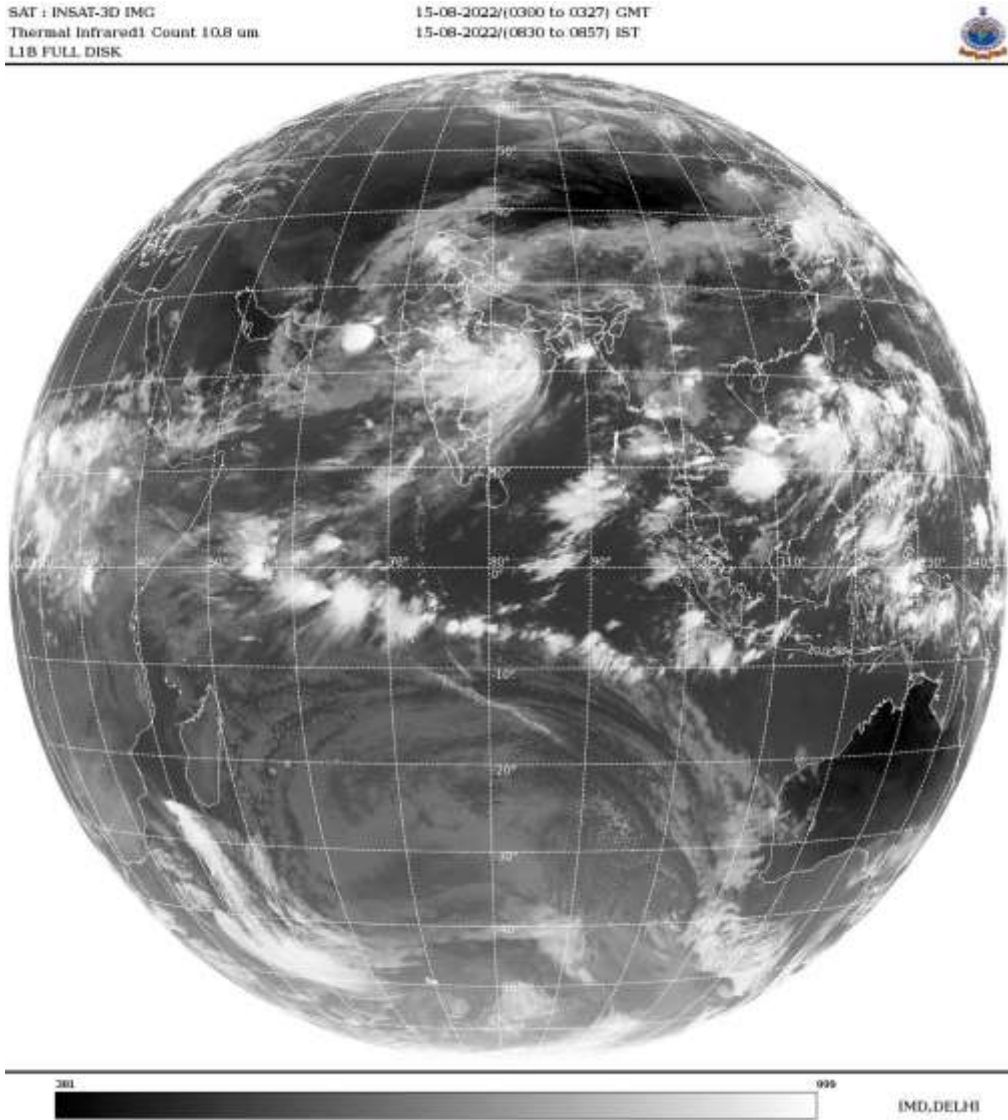
ARABIAN SEA:-

SCT TO BKN LOW/MED CLOUDS WITH EMBDD INT TO V INT CONVTN OVER NE ARSEA OFF PAK COAST (.) SCT LOW/MED CLOUDS WITH EMBDD MOD TO INT CONVTN OVER EC & SE ARSEA AND LKSDP ILS AREA (.) SCT LOW/MED CLOUDS WITH EMBDD WK TO MOD CONVTN OVER REST ARSEA GULF OF CAMBAY AND COMORIN AREA (.)

BAY OF BENGAL & ANDAMAN SEA:-

SCT LOW/MED CLOUDS WITH EMBDD INT TO V INT CONVTN OVER EXT NORTH & SE BAY AND N ANDAMAN SEA (.) SCT LOW/MED CLOUDS WITH EMBDD MOD TO INT CONVTN OVER WC BAY GULF OF MARTABAN AND WK TO MOD CONVTN OVER EC&SW BAY ANDAMAN SEA (.)

CLOUDS DESCRIPTION OUTSIDE INDIA:-



SCT LOW/MED CLOUDS WITH EMBDD MOD TO INT CONVTN OVER PAK NEPAL BHUTAN TIBET CHINA YELLOW SEA E CHINA SEA MYANMAR THAILAND GULF OF THIALAND CAMBODIA LAOS VIETNAM GULF OF TONKIN SUMATRA STR OF MALACCA MALAYSIA BORNEO SOUTH CHINA SEA JAVA ILS & SEA CELEBES ILS & SEA PHILIPPINES SULU SEA AND OVER INDIAN OCEAN BET LAT 5.0N TO 11.0S LONG 50.0E TO 108.0E (.)

TOO 15/0955 HRS IST=

NNNN

LEGEND:-

REGION	NORTH	J&K HP PJB HARY DLH UP UTRKND
	EAST	BHR JHRKND CHTGH OR WB SKM NORTH- EAST STATES
	WEST	RAJ MP GUJ MAHA GOA
	SOUTH	TLNGN AP KRNTK KER TN LKSDP ANDAMAN & NICOBAR ILS

CLOUD DISTRIBUTION	ISOL	ISOLATED (LESS THAN 25%)
	SCT	SCATTERED (25 TO 50%)
	BKN	BROKEN (51 TO 75%)
	SLD	SOLID (GREATER THAN 75%)
CLOUDS TOP TEMPERATURE	CTT	CLOUD TOP TEMPERATURE
CONVECTION	WK CONVTN	WEAK CONVECTION (CTT GREATER THAN -25°C)
	MOD CONVTN	MODERATE CONVECTION (CTT BETWEEN -25°C TO -40°C)
	INT CONVTN	INTENSE CONVECTION (CTT BETWEEN -41°C TO -70°C)
	V INT CONVTN	VERY INTENSE CONVECTION (CTT LESS THAN -70°C)
METEOROLOGICAL SUB-DIVISIONS, STATES & UNION TERRITORIES	ARUPR	ARUNACHAL PRADESH
	BHR	BIHAR
	CHTGH	CHHATTISGARH
	COTL AP	COASTAL ANDHRA PRADESH
	COTL KRNTK	COASTAL KARNATAKA
	COTL ORS	COASTAL ORISSA
	GUJ	GUJARAT
	GWB	GANGETIC WEST BENGAL
	HARY	HARYANA
	DLH	DELHI
	HP	HIMACHAL PRADESH
	J&K	JAMMU AND KASHMIR
	JHRKND	JHARKHAND
	KER	KERALA
	KKN	KONKAN
	LKSDP	LAKSHADWEEP
	M MAHA	MADHYA MAHARASHTRA
	MAHA	MAHARASHTRA
	MANI	MANIPUR
	MEGHA	MEGHALAYA
	MIZO	MIZORAM
	MP	MADHYA PRADESH
	MRTHWD	MARATHWADA
	NAGA	NAGALAND
	N COTL AP	NORTH COASTAL ANDHRA PRADESH

	NIK	NORTH INTERIOR KARNATAKA
	ORS	ORISSA
	PJB	PUNJAB
	RAJ	RAJASTHAN
	RYLSM	RAYALASEEMA
	SAU & KUTCH	SAURASHTRA & KUTCH
	SHWB	SUB-HIMALAYAN WEST BENGAL
	SIK	SOUTH INTERIOR KARNATAKA
	SKM	SIKKIM
	TLNGN	TELANGANA
	TN	TAMIL NADU
	TRP	TRIPURA
	UP	UTTAR PRADESH
	UTRKN	UTTARAKHAND
	VID	VIDHARBHA
	SHWB	SUB HIMALAYAN WEST BENGAL
	GWB	GANGETIC WEST BENGAL
	ARSEA	ARABIAN SEA
	ILS	ISLANDS
MISCELLANEOUS	ASSW	IN ASSOCIATION WITH
	ASSTD	ASSOCIATED
	LLC	LOW LEVEL CIRCULATION
	EMBDD	EMBEDDED
	N/HOOD	NEIGHBOURHOOD
	EXT	EXTREME