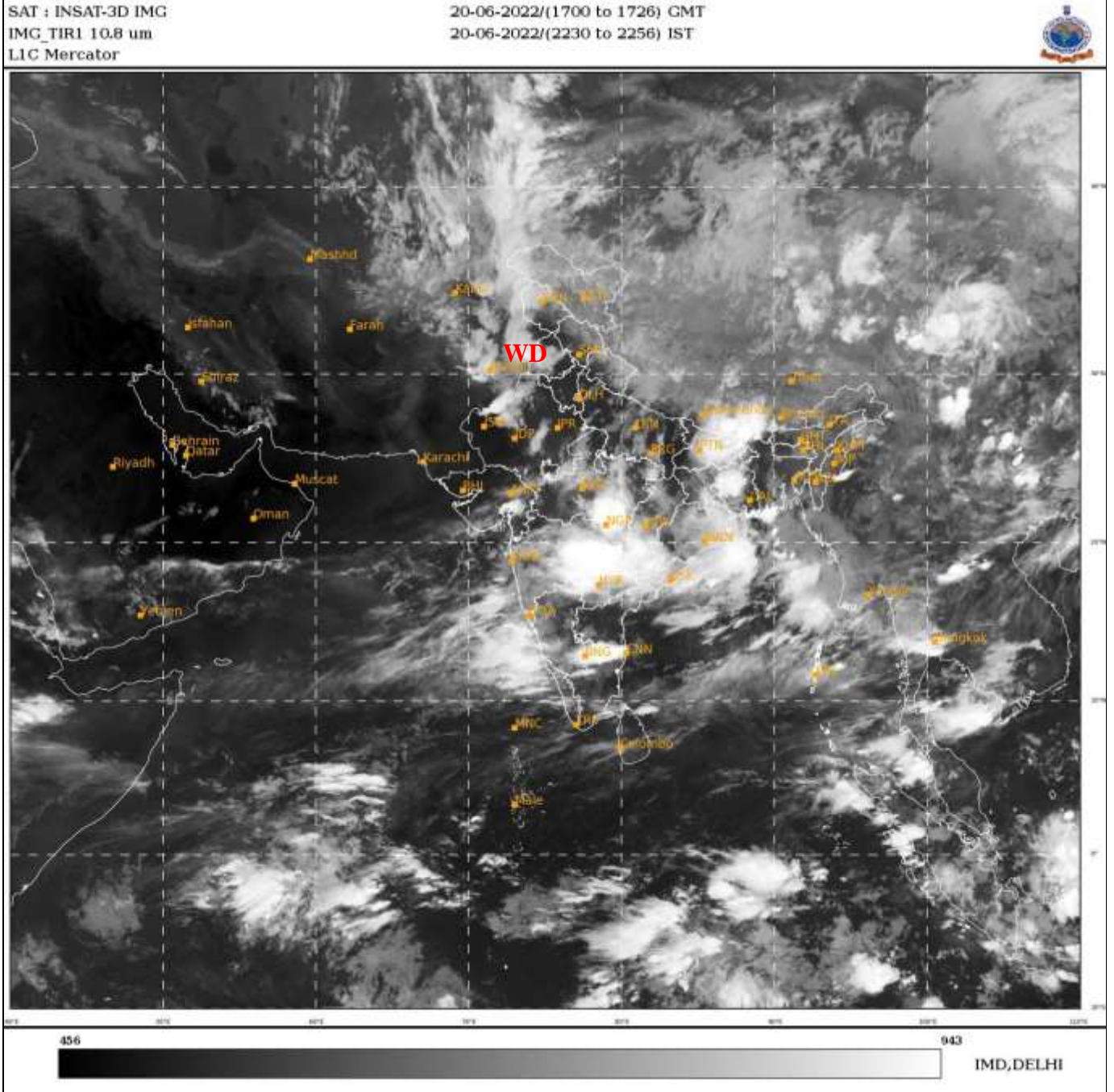




भारत मौसम विज्ञान विभाग
पृथ्वी विज्ञान मंत्रालय
India Meteorological Department
Ministry of Earth Sciences



**SATELLITE BULLETIN BASED ON SATELLITE
IMAGERIES AND PRODUCTS**
20.06.2022 TIME 1800 UTC



TCIN50 DEMS 201800

SATELLITE BULLETIN BASED ON INSAT-3D PIC OF 201700 UTC (.)

REGION COVERED BETWEEN LAT 50.0°N TO 30.0°S AND LONG 40.0°E TO 125.0°E (.)

SALIENT FEATURES:-

WESTERN DISTURBANCE (WD):-

SCT MULTILAYERED CLOUDS OVER N PAK LADAKH J&K HP UTRKND PJB HARY N RAJ NW UP IN ASSW **WD** OVER THE AREA (.)

THUNDERSTORM / CONVECTIVE ACTIVITY:-

THUNDERSTORM / CONVECTIVE ACTIVITIES OBSERVED OVER PJB RAJ E GUJ MP BHR E JHRKND GWB SHWB SKM ORS S CHTGH VID MRTHWD N COTL AP TLNGN KRNTK N TN (.)

DUST:-

METESAT-8 RGB DUST PRODUCT AT 1700 UTC INDICATES DUST AT FEW PLACES OVER S PAK N ARSEA AND AT ISOLATED PLACES OVER SW RAJ NW GUJ (.)

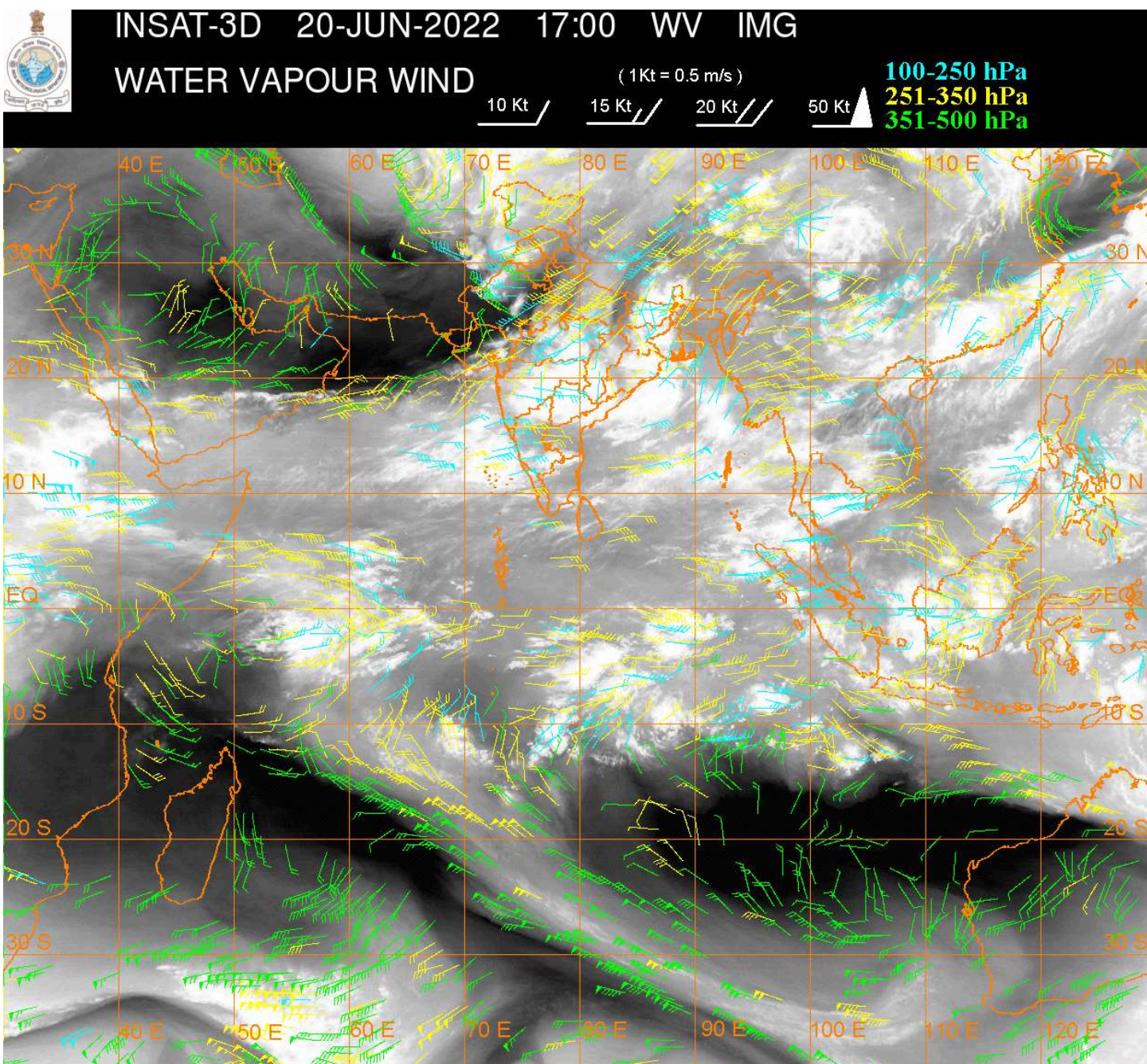
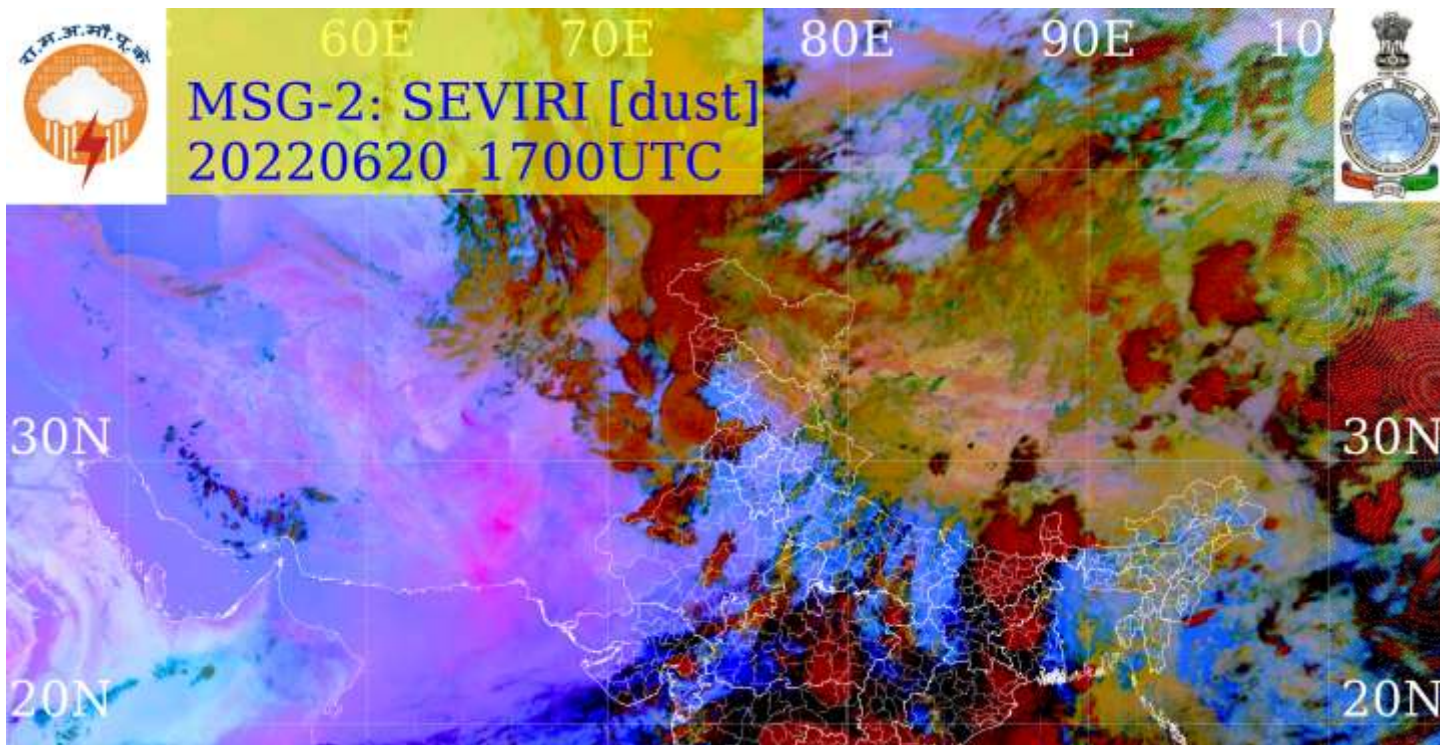
PRECIPITATION NOWCASTING:-

(BASED ON SCOPE NOWCASTING TOOL AT 1600 UTC AT A LEAD TIME OF 03 HRS (MM/HR):-

RAINFALL UP TO 10-20 MM LIKELY OVER E BHR SKM N SHWB N GWB N ORS S CHTGH TLNGN VID MRTHWD NE NIK EXTREME N T ADJ S AP & LKSDP ILS (.)

RAINFALL UP TO 5-10 MM LIKELY OVER MP E GUJ N CHTGH E JHRKND N COTL AP SE SIK (.)

RAINFALL UP TO 0.5-5 MM LIKELY OVER NW LADAKH PJB RAJ UP NE ASSAM S ORS N KKN GOA REST KRNTK N KER & ANDAMAN ILS (.)



CLOUDS DESCRIPTION WITHIN INDIA:-

NORTH:-

SCT LOW/MED CLOUDS WITH EMBDD MOD TO INT CONVTN OVER NW PDAKH N J&K PJB AND ISOL WK TO MOD CONVTN OVER REST LADAKH S J&K HP UTRKND UP (.) SCT LOW/MED CLOUDS OVER HARY DLH (.)

EAST:-

SCT TO BKN LOW/MED CLOUDS WITH EMBDD INT TO V INT CONVTN OVER S CHTGH ADJ SW ORS E JHRKND N GWB (MINIMUM CTT MINUS 81 DEG C) E BHR SHWB SKM (MINIMUM CTT MINUS 93 DEG C) (.) SCT LOW/MED CLOUDS WITH EMBDD MOD TO INT CONVTN OVER N CHTGH REST ORS W BHR AND ISOL WK TO MOD CONVTN OVER W JHRKND S GWB NE STATES (.)

WEST:-

SCT TO BKN LOW/MED CLOUDS WITH EMBDD INT TO V INT CONVTN OVER SE MP VID MRTHWD (MINIMUM CTT MINUS 93 DEG C) (.) SCT LOW/MED CLOUDS WITH EMBDD MOD TO INT CONVTN OVER RAJ E GUJ N MP MADHYA MAHA AND WK TO MOD CONVTN OVER SW GUJ SW MP KKN & GOA (.) SCT LOW/MED CLOUDS OVER REST GUJ (.)

SOUTH:-

SCT TO BKN LOW/MED CLOUDS WITH EMBDD INT TO V INT CONVTN OVER TLNGN NE NIK EXTREME N TN ADJ S AP (MINIMUM CTT MINUS 93 DEG C) (.) SCT LOW/MED CLOUDS WITH EMBDD MOD TO INT CONVTN OVER N COTL AP REST KRNTK LKSDP AND WK TO MOD CONVTN OVER KER REST TN ANDAMAN ILS (.) SCT LOW/MED CLOUDS OVER RYLSM S COTL AP & NICOBAR ILS (.)

ARABIAN SEA:-

SCT LOW/MED CLOUDS WITH EMBDD MOD TO INT CONVTN OVER EC ADJ SE ARSEA & LKSDP ILS AREA (.)

BAY OF BENGAL & ANDAMAN SEA:-

SCT LOW/MED CLOUDS WITH EMBDD INT TO V INT CONVTN OVER NORTH BAY (.) SCT LOW/MED CLOUDS WITH EMBDD MOD TO INT CONVTN OVER C BAY ANDAMAN SEA AND ISOL WK TO MOD CONVTN OVER S BAY (.)

CLOUDS DESCRIPTION OUTSIDE INDIA:-

SCT LOW/MED CLOUDS WITH EMBDD MOD TO INT CONVTN OVER N PAK NEPAL BHUTAN TIBET CHINA MYANMAR THAILAND GULF OF THAILAND CAMBODIA LAOS N VIETNAM SUMATRA STR OF MALACCA MALAYSIA BORNEO SOUTH CHINA SEA JAVA ILS & SEA CELEBES ILS & SEA SULU SEA PHILIPPINES TAIWAN E CHINA SEA AND OVER INDIAN OCEAN BET LAT 5.0N TO 15.0S LONG 53.0E TO 110.0E (.)

TOO 20/2330 HRS IST=

NNNN

LEGEND:-

REGION	NORTH	J&K HP PJB HARY DLH UP UTRKND
	EAST	BHR JHRKND CHTGH OR WB SKM NORTH- EAST STATES
	WEST	RAJ MP GUJ MAHA GOA
	SOUTH	TLNGN AP KRNTK KER TN LKSDP ANDAMAN & NICOBAR ILS

CLOUD DISTRIBUTION	ISOL	ISOLATED (LESS THAN 25%)	
	SCT	SCATTERED (25 TO 50%)	
	BKN	BROKEN (51 TO 75%)	
	SLD	SOLID (GREATER THAN 75%)	
CLOUDS TOP TEMPERATURE	CTT	CLOUD TOP TEMPERATURE	
CONVECTION	WK CONVTN	WEAK CONVECTION (CTT GREATER THAN -25°C)	
	MOD CONVTN	MODERATE CONVECTION (CTT BETWEEN -25°C TO -40°C)	
	INT CONVTN	INTENSE CONVECTION (CTT BETWEEN -41°C TO -70°C)	
	V INT CONVTN	VERY INTENSE CONVECTION (CTT LESS THAN -70°C)	
METEOROLOGICAL SUB-DIVISIONS, STATES & UNION TERRITORIES	ARUPR	ARUNACHAL PRADESH	
	BHR	BIHAR	
	CHTGH	CHHATTISGARH	
	COTL AP	COASTAL ANDHRA PRADESH	
	COTL KRNTK	COASTAL KARNATAKA	
	COTL ORS	COASTAL ORISSA	
	GUJ	GUJARAT	
	GWB	GANGETIC WEST BENGAL	
	HARY	HARYANA	
	DLH	DELHI	
	HP	HIMACHAL PRADESH	
	J&K	JAMMU AND KASHMIR	
	JHRKND	JHARKHAND	
	KER	KERALA	
	KKN	KONKAN	
	LKSDP	LAKSHADWEEP	
	M MAHA	MADHYA MAHARASHTRA	
	MAHA	MAHARASHTRA	
	MANI	MANIPUR	
	MEGHA	MEGHALAYA	
	MIZO	MIZORAM	
	MP	MADHYA PRADESH	
		MRTHWD	MARATHWADA
		NAGA	NAGALAND
N COTL AP		NORTH COASTAL ANDHRA PRADESH	
NIK		NORTH INTERIOR KARNATAKA	
ORS		ORISSA	
PJB		PUNJAB	
RAJ		RAJASTHAN	
RYLSM		RAYALASEEMA	
SAU & KUTCH		SAURASHTRA & KUTCH	
SHWB		SUB-HIMALAYAN WEST BENGAL	
SIK		SOUTH INTERIOR KARNATAKA	
SKM		SIKKIM	

	TLNGN	TELANGANA
	TN	TAMIL NADU
	TRP	TRIPURA
	UP	UTTAR PRADESH
	UTRKND	UTTARAKHAND
	VID	VIDHARBHA
	SHWB	SUB HIMALAYAN WEST BENGAL
	GWB	GANGETIC WEST BENGAL
	ARSEA	ARABIAN SEA
	ILS	ISLANDS
MISCELLANEOUS	ASSW	IN ASSOCIATION WITH
	ASSTD	ASSOCIATED
	LLC	LOW LEVEL CIRCULATION
	EMBDD	EMBEDDED
	N/HOOD	NEIGHBOURHOOD
	EXT	EXTREME