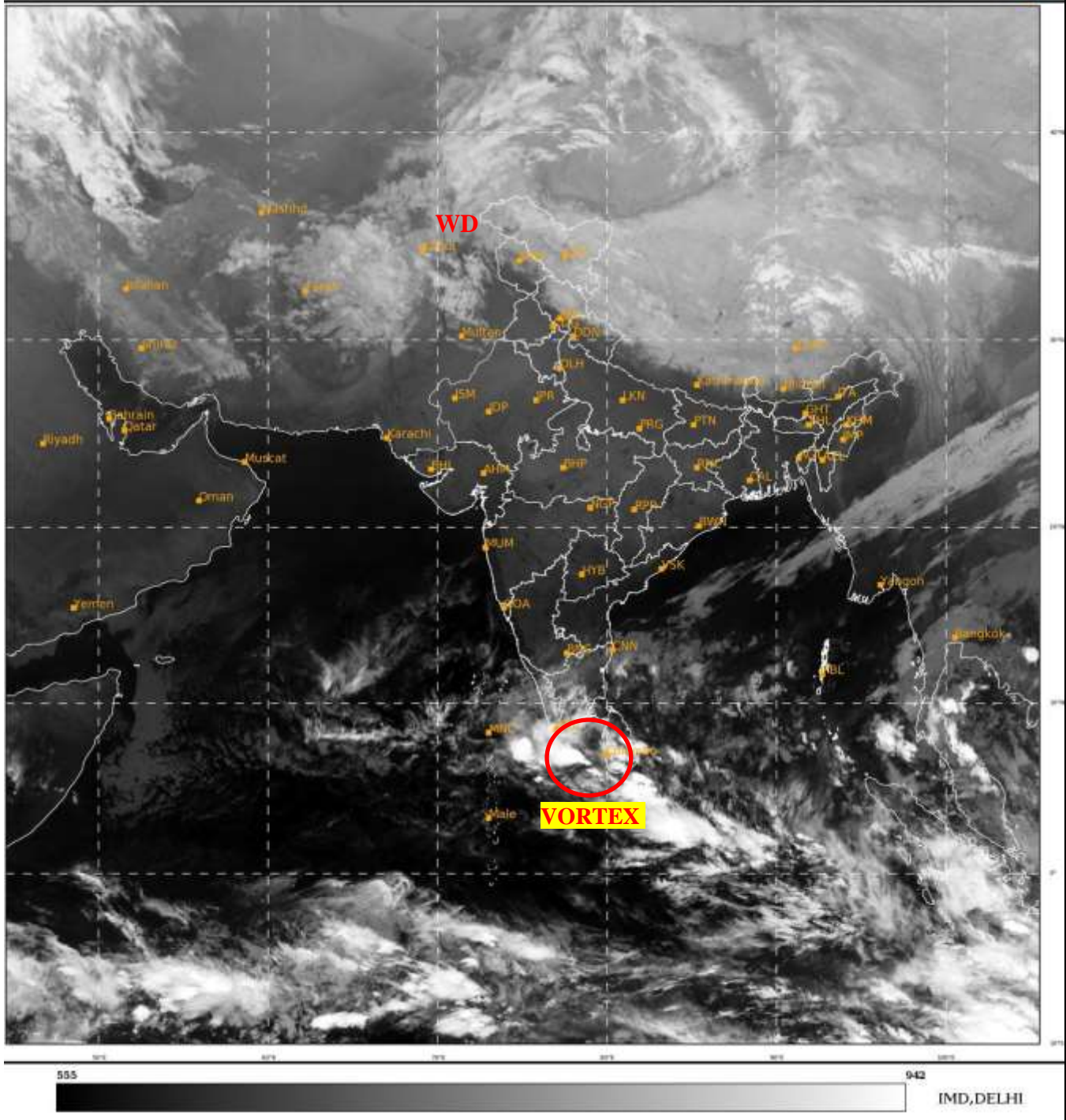




**SATELLITE BULLETIN BASED ON SATELLITE
IMAGERIES AND PRODUCTS**
02.02.2023 TIME 2100 UTC

SAT : INSAT-3D IMG
IMG_TIR1 10.8 um
LIC Mercator

02-02-2023/(2100 to 2126) GMT
03-02-2023/(0230 to 0256) IST



TCIN50 DEMS 022100

SATELLITE BULLETIN BASED ON INSAT-3D PIC OF 022100 UTC (.)

REGION COVERED BETWEEN LAT 50.0°N TO 35.0°S AND LONG 40.0°E TO 125.0°E (.)

SALIENT FEATURES:-

VORTEX OVER COMORIN AREA ADJ GULF OF MANNAR & SRI LANKA:-

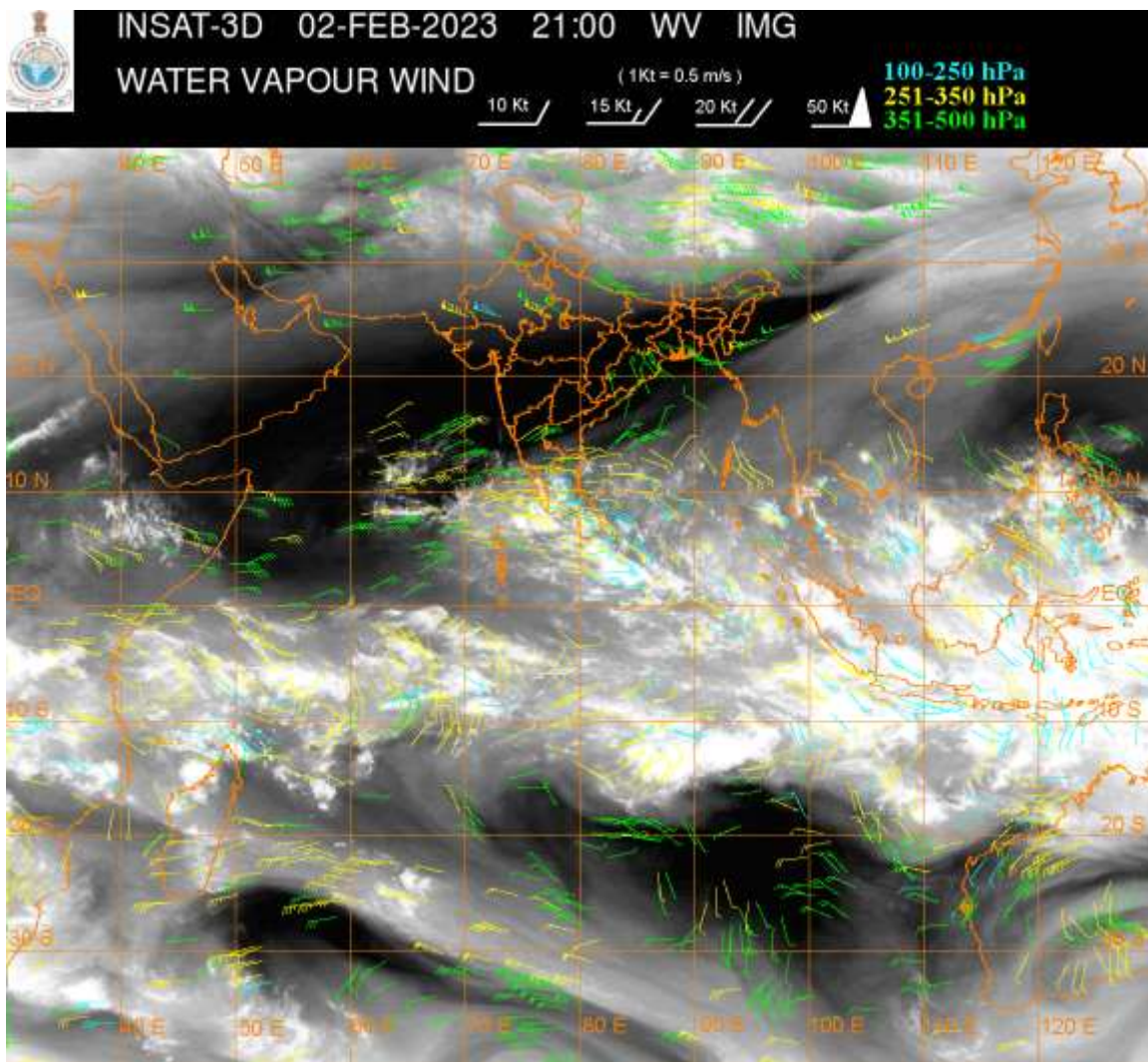
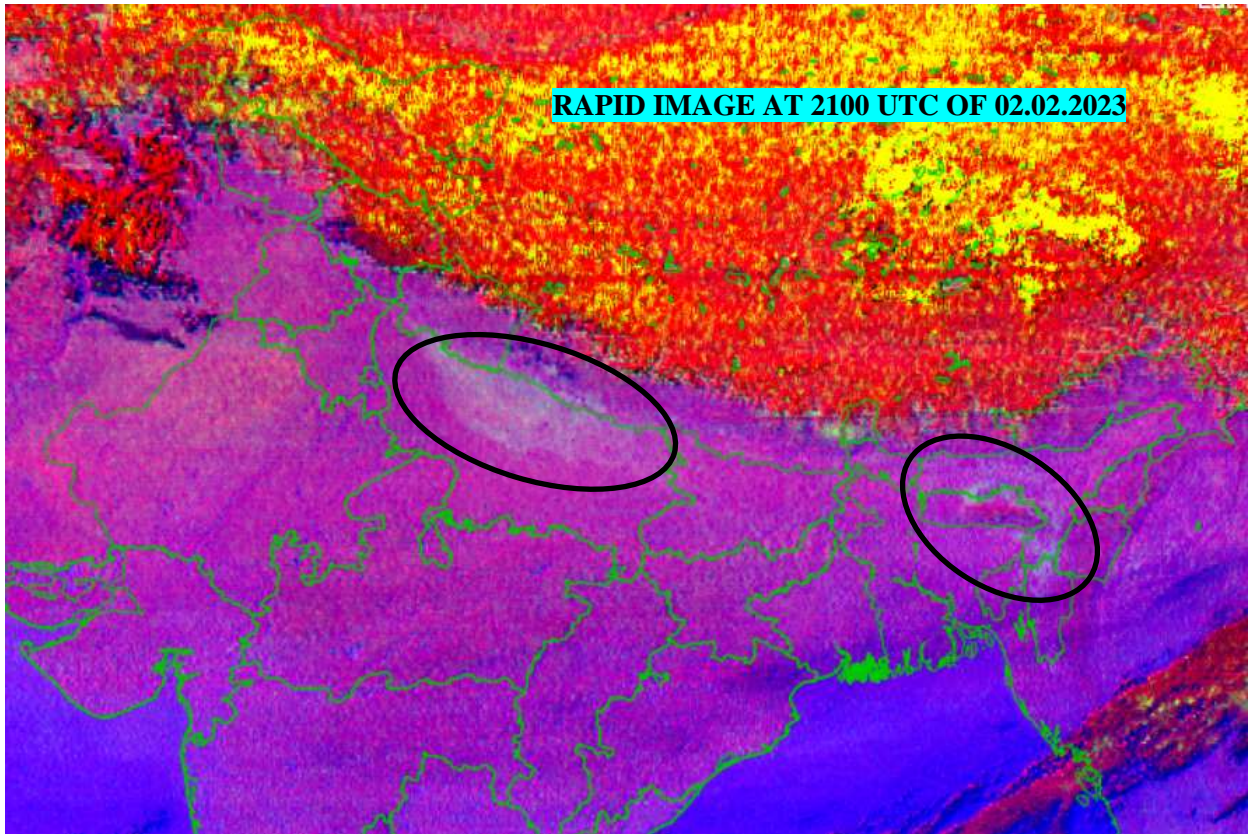
VORTEX OVER COMORIN AREA ADJ GULF OF MANNAR & SRI LANKA (.) **CENTER NOT DEFINED IN SATELLITE IMAGERY** (.) ASSTD SCT TO BKN LOW/MED CLOUDS WITH EMBDD INTENSE TO VERY INTENSE CONVECTION OVER COMORIN AREA SRI LANKA (MINIMUM CTT **MINUS 93** DEGREE CEL) AND MOD TO INT CONV'TN OVER S KER TN PALK STR GULF OF MANNAR (.)

WESTERN DISTURBANCE (WD):-

SCT MULTILAYERED CLOUDS OVER AFGAN N PAK LADAKH J&K HP N UTRKND & N/HOOD IN ASSW **WD** OVER THE AREA (.)

FOG / LOW CLOUDS:-

NIGHT MICROPHYSICS IMAGERY OF INSAT-3D (RAPID) AT 2100 UTC INDICATES FOG / LOW CLOUDS OVER N UP W & S ASSAM MEGHA N MIZO (.)



CLOUDS DESCRIPTION WITHIN INDIA:-

NORTH:-

SCT LOW/MED CLOUDS WITH EMBDD MOD TO INT CONVTN OVER LADAKH AND WK TO MOD CONVTN OVER J&K HP N UTRKND (.) ISOL LOW/MED CLOUDS OVER SE PJB (.)

EAST:-

SCT LOW/MED CLOUDS WITH EMBDD ISOL WK TO MOD CONVTN OVER SKM ARUPR (.) ISOL TO SCT LOW/MED CLOUDS OVER N SHWB REST NE STATES (.)

WEST:-

ISOL LOW/MED CLOUDS OVER EXT NW RAJ SOUTH MADHYA MAHA (.)

SOUTH:-

SCT LOW/MED CLOUD WITH EMBDD MOD TO INT CONVTN OVER KER S TN NICOBAR ILS (.)
SCT LOW/MED CLOUDS WITH EMBDD WK TO MOD CONVTN OVER SIK S RYLSM N TN LKSDP
ILS (.) SCT LOW/MED CLOUDS OVER S COTL KRNTK N RYLSM S COTL AP ANDAMAN & (.)

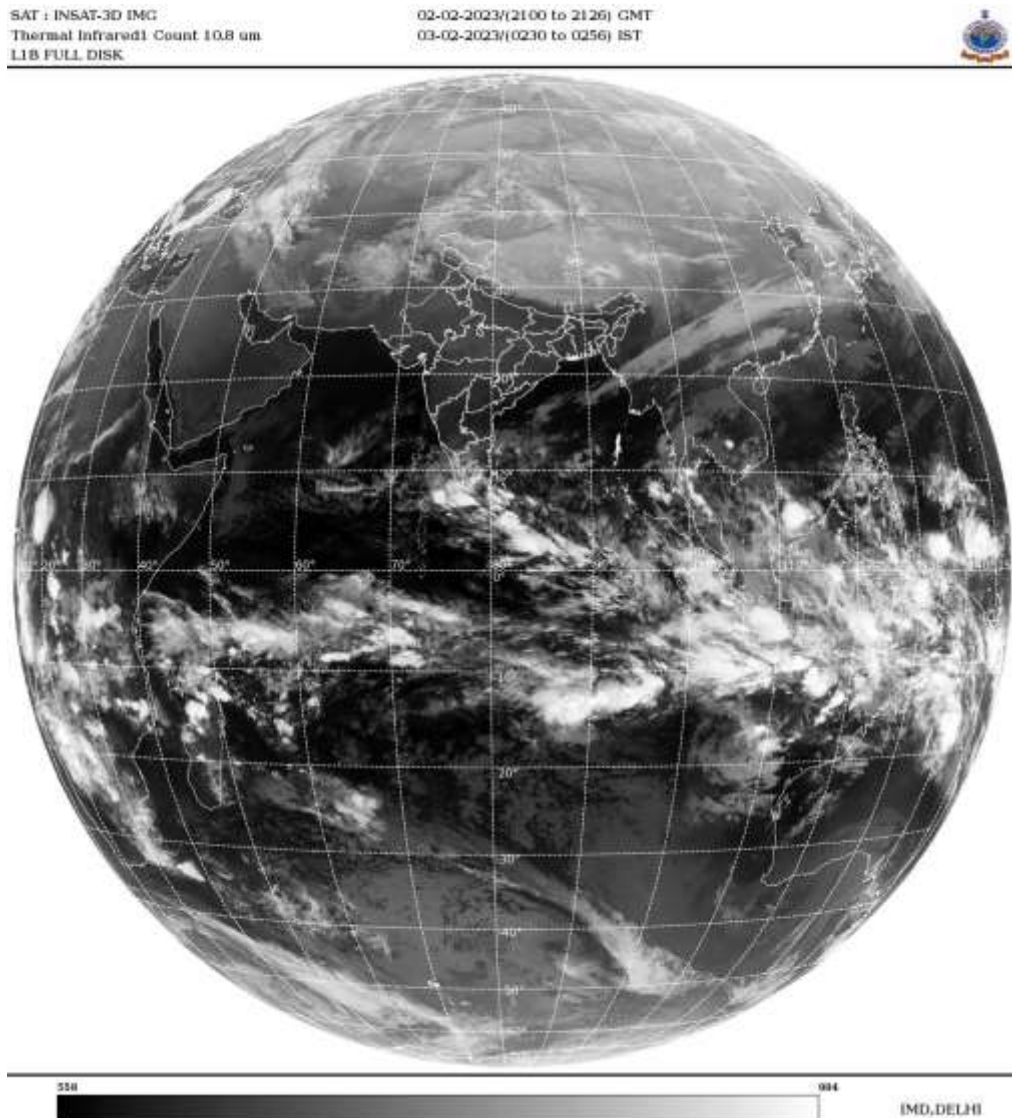
ARABIAN SEA:-

SCT TO BKN LOW/MED CLOUDS WITH EMBDD INT TO V INT CONVTN OVER COMORIN AREA
(.) SCT LOW/MED CLOUDS WITH EMBDD MOD TO INT CONVTN OVER SE ARSEA AND WK TO
MOD CONVTN OVER EC & SW ARSEA LKSDP ILS AREA (.)

BAY OF BENGAL & ANDAMAN SEA:-

SCT LOW/MED CLOUDS WITH EMBDD INT TO V INT CONVTN OVER SW BAY (.) SCT LOW/MED
CLOUDS WITH EMBDD MOD TO INT CONVTN OVER SE BAY & S ANDAMAN SEA (.) SCT
LOW/MED CLOUDS WITH EMBDD WK TO MOD CONVTN OVER NE & CENTRAL BAY AND N
ANDAMAN SEA (.)

CLOUDS DESCRIPTION OUTSIDE INDIA:-



SCT LOW/MED CLOUDS WITH EMBDD MOD TO INT CONVTN OVER SRI LANKA PALK STR
GULF OF MANNAR MALDIVES N PAK TIBET CHINA YELLOW SEA E CHINA SEA MYANMAR
THAILAND GULF OF THAILAND CAMBODIA S VIETNAM SUMATRA STR OF MALACCA
MALAYSIA BORNEO SOUTH CHINA SEA JAVA ILS & SEA CELEBES ILS & SEA PHILIPPINES
SULU SEA MADAGASCAR MOZAMBIQUE CHANNEL AND OVER INDIAN OCEAN BET LAT 5.0N
TO 20.0S LONG 40.0E TO 125.0E (.)

TOO 03/0415 HRS IST=

NNNN

LEGEND:-

REGION	NORTH	J&K HP PJB HARY DLH UP UTRKND
	EAST	BHR JHRKND CHTGH OR WB SKM NORTH- EAST STATES
	WEST	RAJ MP GUJ MAHA GOA
	SOUTH	TLNGN AP KRNTK KER TN LKSDP ANDAMAN & NICOBAR ILS

CLOUD DISTRIBUTION	ISOL	ISOLATED (LESS THAN 25%)
	SCT	SCATTERED (25 TO 50%)
	BKN	BROKEN (51 TO 75%)
	SLD	SOLID (GREATER THAN 75%)
CLOUDS TOP TEMPERATURE	CTT	CLOUD TOP TEMPERATURE
CONVECTION	WK CONVTN	WEAK CONVECTION (CTT GREATER THAN -25°C)
	MOD CONVTN	MODERATE CONVECTION (CTT BETWEEN -25°C TO -40°C)
	INT CONVTN	INTENSE CONVECTION (CTT BETWEEN -41°C TO -70°C)
	V INT CONVTN	VERY INTENSE CONVECTION (CTT LESS THAN -70°C)
METEOROLOGICAL SUB-DIVISIONS, STATES & UNION TERRITORIES	ARUPR	ARUNACHAL PRADESH
	BHR	BIHAR
	CHTGH	CHHATTISGARH
	COTL AP	COASTAL ANDHRA PRADESH
	COTL KRNTK	COASTAL KARNATAKA
	COTL ORS	COASTAL ORISSA
	GUJ	GUJARAT
	GWB	GANGETIC WEST BENGAL
	HARY	HARYANA
	DLH	DELHI
	HP	HIMACHAL PRADESH
	J&K	JAMMU AND KASHMIR
	JHRKND	JHARKHAND
	KER	KERALA
	KKN	KONKAN
	LKSDP	LAKSHADWEEP
	M MAHA	MADHYA MAHARASHTRA
	MAHA	MAHARASHTRA
	MANI	MANIPUR
	MEGHA	MEGHALAYA
	MIZO	MIZORAM
	MP	MADHYA PRADESH
	MRTHWD	MARATHWADA
	NAGA	NAGALAND
	N COTL AP	NORTH COASTAL ANDHRA PRADESH

	NIK	NORTH INTERIOR KARNATAKA
	ORS	ORISSA
	PJB	PUNJAB
	RAJ	RAJASTHAN
	RYLSM	RAYALASEEMA
	SAU & KUTCH	SAURASHTRA & KUTCH
	SHWB	SUB-HIMALAYAN WEST BENGAL
	SIK	SOUTH INTERIOR KARNATAKA
	SKM	SIKKIM
	TLNGN	TELANGANA
	TN	TAMIL NADU
	TRP	TRIPURA
	UP	UTTAR PRADESH
	UTRKN	UTTARAKHAND
	VID	VIDHARBHA
	SHWB	SUB HIMALAYAN WEST BENGAL
	GWB	GANGETIC WEST BENGAL
	ARSEA	ARABIAN SEA
	ILS	ISLANDS
MISCELLANEOUS	ASSW	IN ASSOCIATION WITH
	ASSTD	ASSOCIATED
	LLC	LOW LEVEL CIRCULATION
	EMBDD	EMBEDDED
	N/HOOD	NEIGHBOURHOOD
	EXT	EXTREME