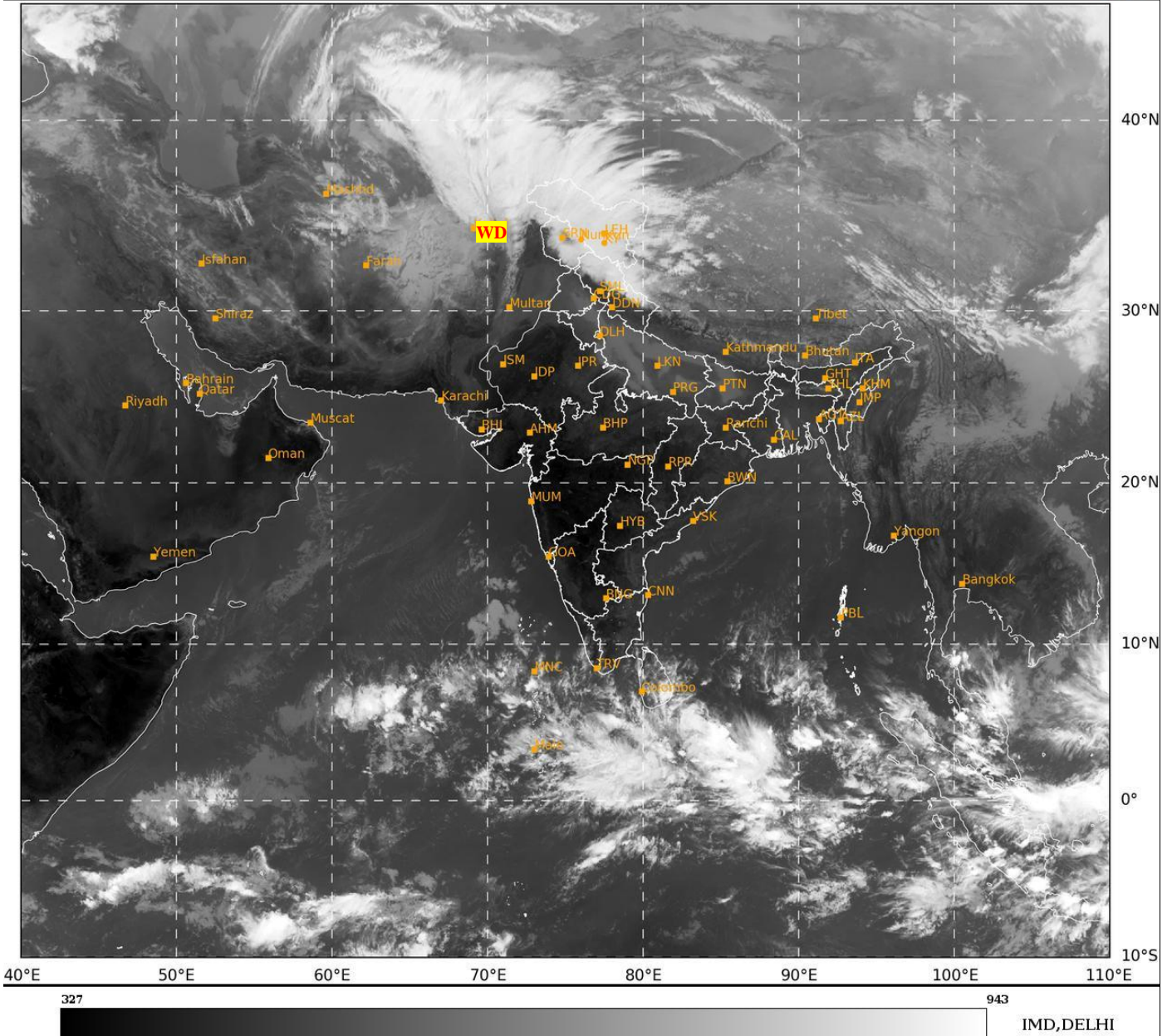




**SATELLITE BULLETIN BASED ON SATELLITE
IMAGERIES AND PRODUCTS**
04.01.2025 TIME 0900 UTC

SAT : INSAT-3DR IMG
IMG_TIR1 10.8 um
LIC Mercator

04-01-2025/(0845 to 0912) GMT
04-01-2025/(1415 to 1442) IST



TCIN50 DEMS 040900

SATELLITE BULLETIN BASED ON INSAT-3DR PIC OF 040845 UTC (.)

REGION COVERED BETWEEN LAT 50.0°N TO 35.0°S AND LONG 40.0°E TO 125.0°E (.)

SALIENT FEATURES:-

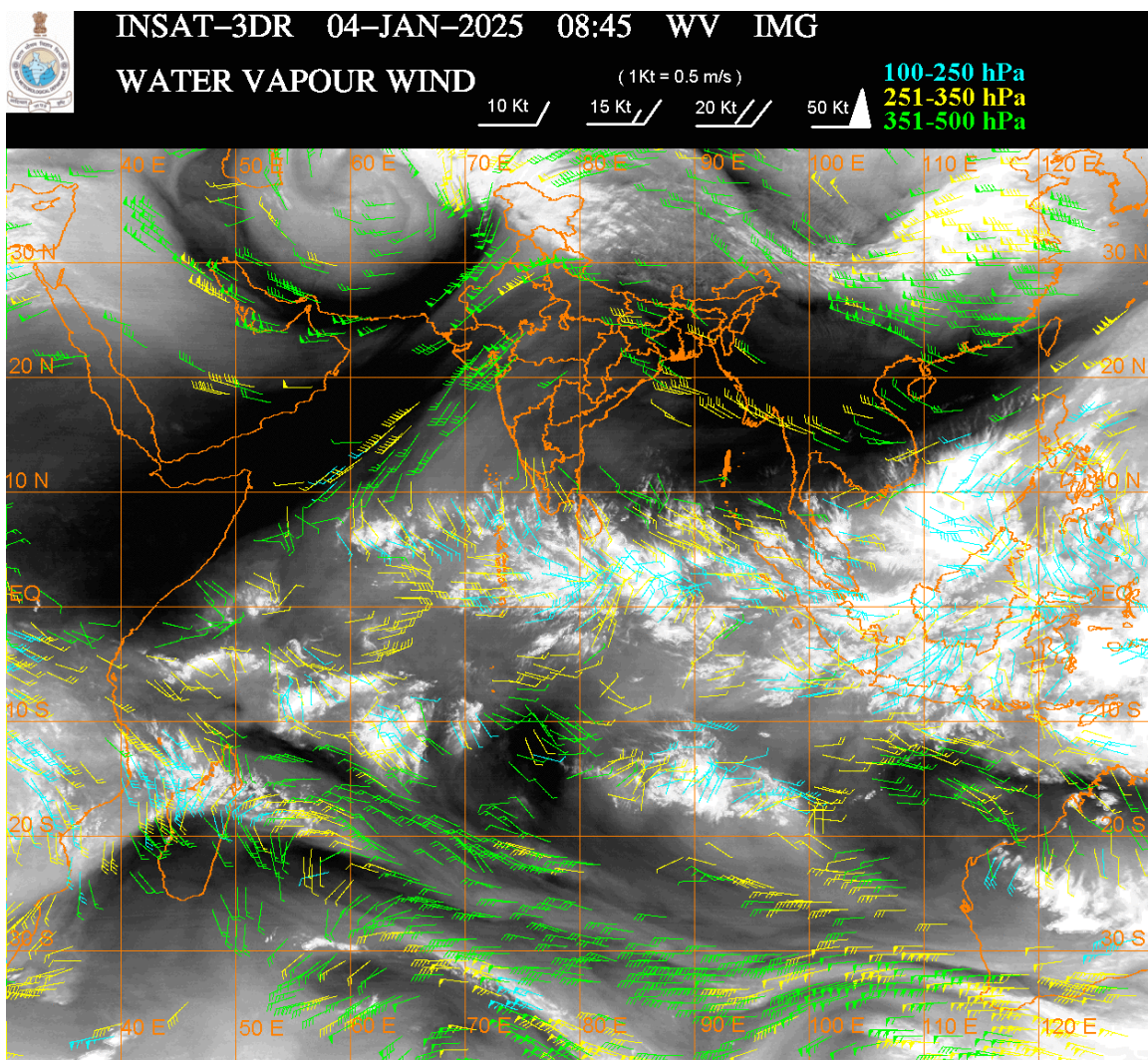
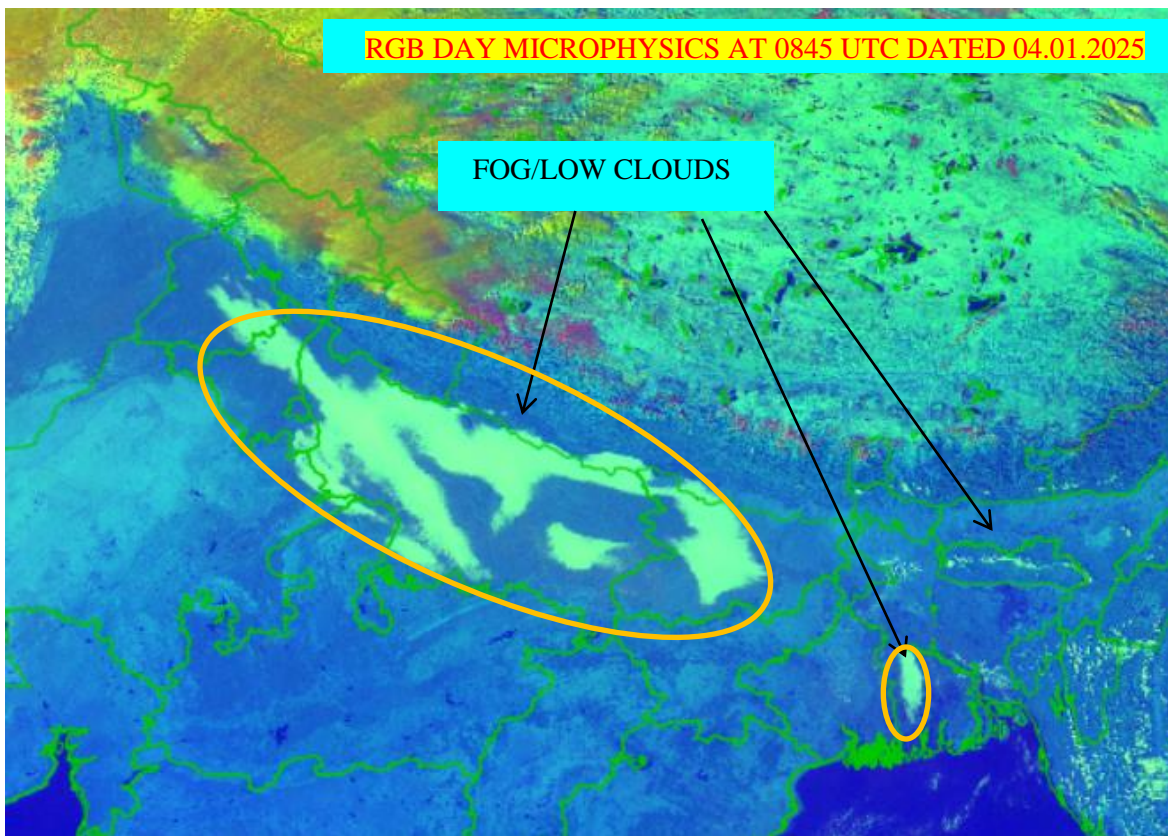
WESTERN DISTURBANCE:-

SCT MULTILAYERED CLOUDS OVER E IRAN AFGAN PAK LADAKH J&K HP UTRKND PJB HARY DLH W UP N RAJ AND N/HOOD IN ASSW **WD** OVER THE AREA (.)

FOG / LOW CLOUDS:-

DAY MICROPHYSICS COMPOSITE RGB IMAGERY OF INSAT 3D/R (RAPID) AT 0845 UTC SHOWS SCT FOG / LOW CLOUDS OVER EXT NE RAJ E PJB N&SE HARY UP S NEPAL NW MP W BHR AND ISOL FOG/LOW CLOUDS OVER NE STATES S BD (.)

RGB DAY MICROPHYSICS AT 0845 UTC DATED 04.01.2025



CLOUDS DESCRIPTION WITHIN INDIA:-

NORTH:-

SCT LOW/MED CLOUDS WITH EMBDD MOD TO INT CONVTN OVER LADAKH J&K N HP N UTRKND (.) SCT LOW/MED CLOUDS OVER S HP PJB (.)

EAST:-

SCT LOW/MED CLOUDS WITH EMBDD ISOL WK CONVTN OVER SKM (.) ISOL TO SCT LOW/MED CLOUDS OVER JHRKND CHTGH ORS SHWB NE STATES & BD (.)

WEST:-

ISOL LOW/MED CLOUDS OVER N MP (.)

SOUTH:-

**SCT LOW/MED CLOUDS WITH EMBDD WK CONV TN OVER S KER SW TN LKSDP ILS AREA (.)
SCT LOW/MED CLOUDS OVER SIK COTL AP N KER TN ANDAMAN & NICOBAR ILS (.)**

ARABIAN SEA:-

**SCT LOW/MED CLOUDS WITH EMBDD MOD TO INT CONV TN OVER SOUTH ARSEA ADJ
EQUATORIAL INDIAN OCEAN MALDIVES & COMORIN AREA (.) SCT LOW/MED CLOUDS WITH
EMBDD WK TO MOD CONV TN OVER EC ARSEA LKSDP ILS AREA (.)**

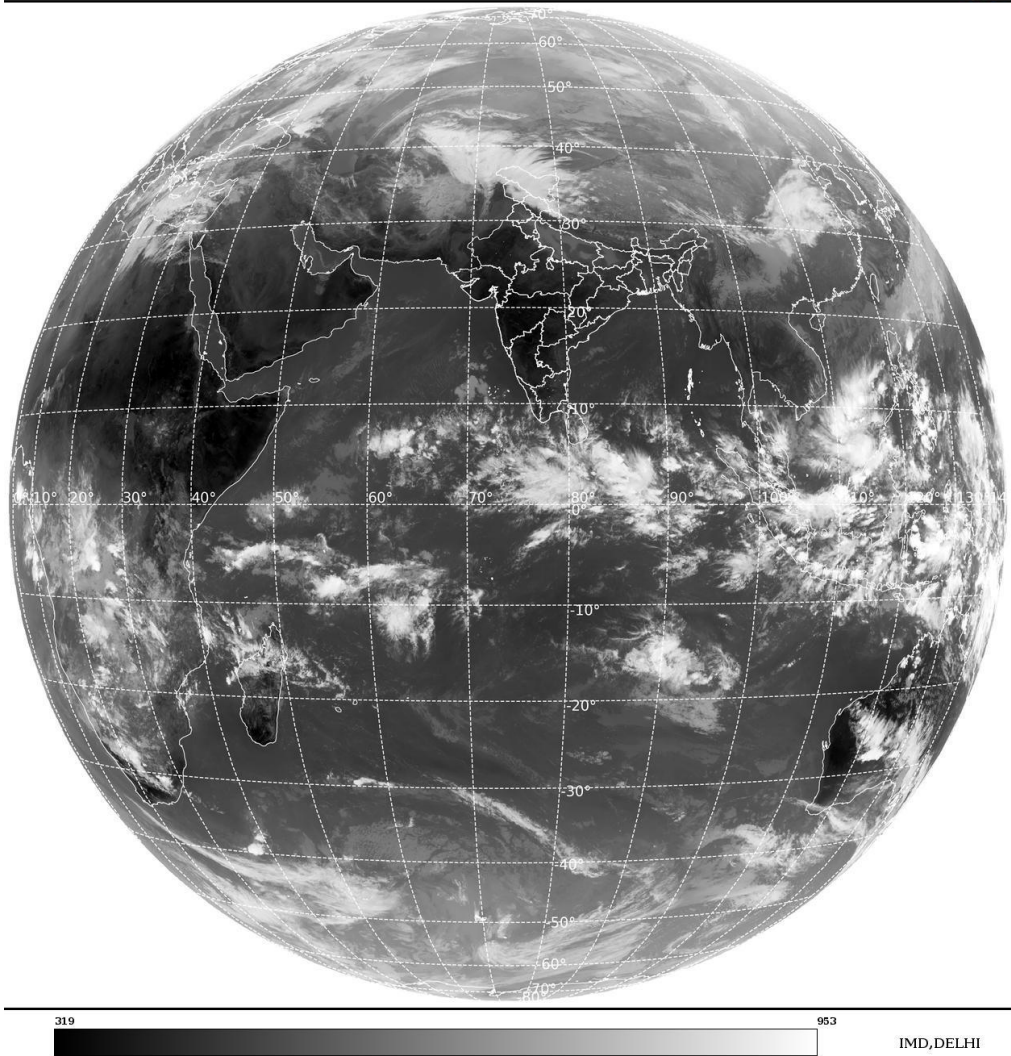
BAY OF BENGAL & ANDAMAN SEA:-

**SCT LOW/MED CLOUDS WITH EMBDD MOD TO INT CONV TN OVER SOUTH BAY SOUTH OF
10.0N ADJ EQUATORIAL INDIAN OCEAN & SOUTH ANDAMAN SEA (.) SCT LOW/MED CLOUDS
WITH EMBDD ISOL WK TO MOD CONV TN OVER CENTRAL BAY (.)**

CLOUDS DESCRIPTION OUTSIDE INDIA:-

SAT : INSAT-3DR IMG
Thermal Infrared1 Count 10.8 um
LIB FULL DISK

04-01-2025/(0845 to 0912) GMT
04-01-2025/(1415 to 1442) IST



**SCT LOW/MED CLOUDS WITH EMBDD MOD TO INT CONV TN OVER SOUTH SRI LANKA
MALDIVES N PAK TIBET CHINA EAST CHINA SEA CAMBODIA VIETNAM SUMATRA STR OF
MALACCA MALAYSIA BORNEO SOUTH CHINA SEA JAVA ILS & SEA CELEBES ILS & SEA
PHILIPPINES SULU SEA N MADAGASCAR MOZAMBIQUE CHANNEL AND OVER INDIAN
OCEAN BET LAT 5.0N TO 23.0S LONG 40.0E TO 120.0E (.)**

TOO 04/1540 EF=

NNNN

LEGEND:-

REGION	NORTH	J&K HP PJB HARY DLH UP UTRKND
	EAST	BHR JHRKND CHTGH ORS WB SKM NORTH- EAST STATES
	WEST	RAJ MP GUJ MAHA GOA
	SOUTH	TLNGN AP KRNTK KER TN LKSDP ANDAMAN & NICOBAR ILS
CLOUD DISTRIBUTION	ISOL	ISOLATED (LESS THAN 25%)
	SCT	SCATTERED (25 TO 50%)
	BKN	BROKEN (51 TO 75%)
	SLD	SOLID (GREATER THAN 75%)
CLOUDS TOP TEMPERATURE	CTT	CLOUD TOP TEMPERATURE
CONVECTION	WK CONVTN	WEAK CONVECTION (CTT GREATER THAN -25°C)
	MOD CONVTN	MODERATE CONVECTION (CTT BETWEEN -25°C TO -40°C)
	INT CONVTN	INTENSE CONVECTION (CTT BETWEEN -41°C TO -70°C)
	V INT CONVTN	VERY INTENSE CONVECTION (CTT LESS THAN -70°C)
METEOROLOGICAL SUB- DIVISIONS, STATES & UNION TERRITORIES	ARUPR	ARUNACHAL PRADESH
	BHR	BIHAR
	CHTGH	CHHATTISGARH
	COTL AP	COASTAL ANDHRA PRADESH
	COTL KRNTK	COASTAL KARNATAKA
	COTL ORS	COASTAL ORISSA
	GUJ	GUJARAT
	GWB	GANGETIC WEST BENGAL
	HARY	HARYANA
	DLH	DELHI
	HP	HIMACHAL PRADESH
	J&K	JAMMU AND KASHMIR
	JHRKND	JHARKHAND
	KER	KERALA
	KKN	KONKAN
	LKSDP	LAKSHADWEEP
	M MAHA	MADHYA MAHARASHTRA
	MAHA	MAHARASHTRA
	MANI	MANIPUR
	MEGHA	MEGHALAYA
	MIZO	MIZORAM
	MP	MADHYA PRADESH
		MRTHWD
NAGA		NAGALAND
N COTL AP		NORTH COASTAL ANDHRA PRADESH
NIK		NORTH INTERIOR KARNATAKA
ORS		ORISSA

	PJB	PUNJAB
	RAJ	RAJASTHAN
	RYLSM	RAYALASEEMA
	SAU & KUTCH	SAURASHTRA & KUTCH
	SHWB	SUB-HIMALAYAN WEST BENGAL
	SIK	SOUTH INTERIOR KARNATAKA
	SKM	SIKKIM
	TLNGN	TELANGANA
	TN	TAMIL NADU
	TRP	TRIPURA
	UP	UTTAR PRADESH
	UTRKND	UTTARAKHAND
	VID	VIDHARBHA
	SHWB	SUB HIMALAYAN WEST BENGAL
	GWB	GANGETIC WEST BENGAL
	ARSEA	ARABIAN SEA
	ILS	ISLANDS
MISCELLANEOUS	ASSW	IN ASSOCIATION WITH
	ASSTD	ASSOCIATED
	LLC	LOW LEVEL CIRCULATION
	EMBDD	EMBEDDED
	N/HOOD	NEIGHBOURHOOD
	EXT	EXTREME