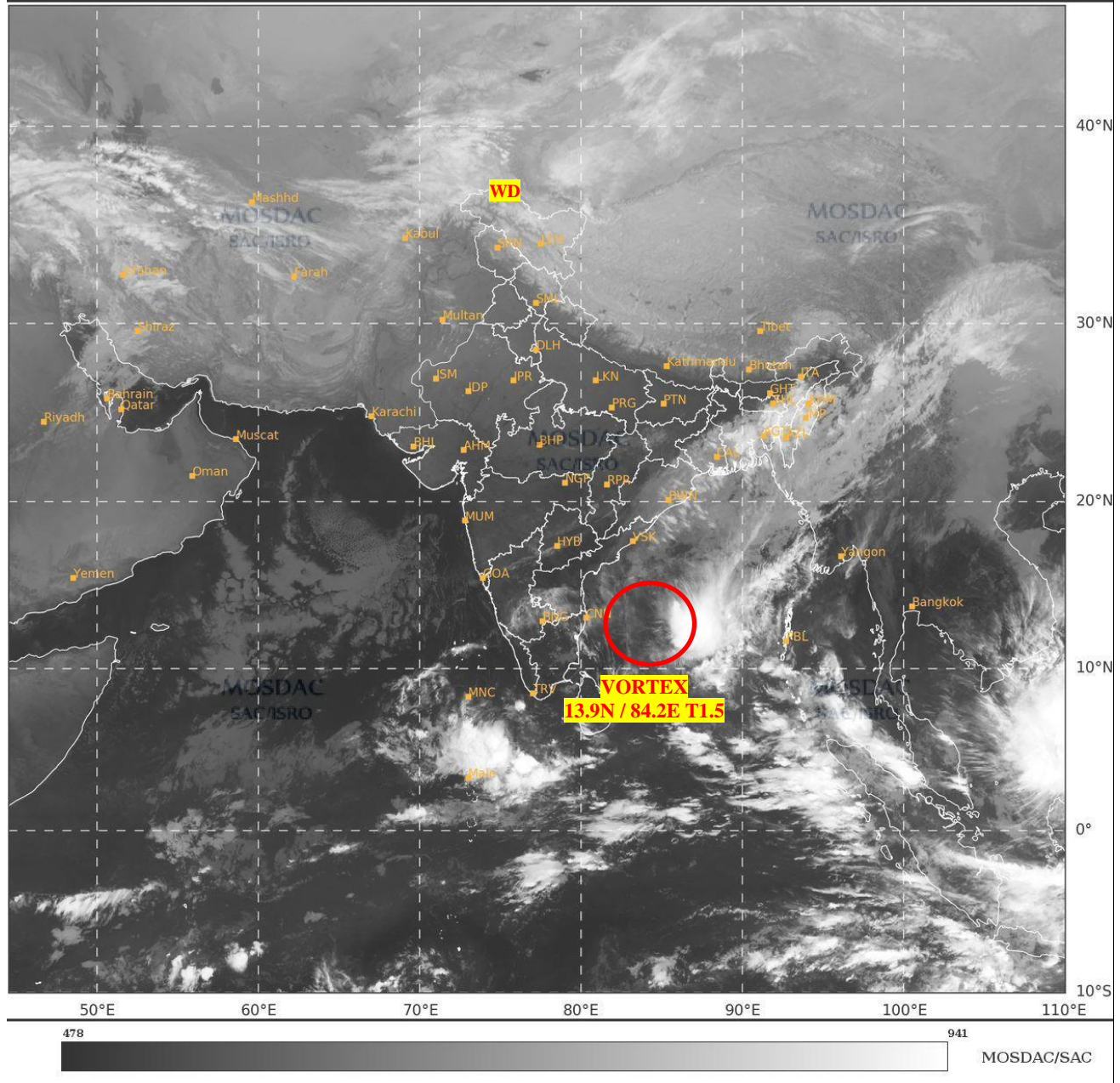




**SATELLITE BULLETIN BASED ON SATELLITE  
IMAGERIES AND PRODUCTS**  
**21.12.2024 TIME 0300 UTC**

SAT : INSAT-3DR IMG  
IMG\_TIR1 10.8 um  
LIC Mercator

21-12-2024/(0245 to 0312) GMT  
21-12-2024/(0815 to 0842) IST



TCIN50 DEMS 210300

SATELLITE BULLETIN BASED ON INSAT-3DR PIC OF 210245 UTC (.)

REGION COVERED BETWEEN LAT 50.0°N TO 35.0°S AND LONG 40.0°E TO 125.0°E (.)

**SALIENT FEATURES:-**

**VORTEX OVER WEST CENTRAL ADJ SOUTH WEST BAY:-**

VORTEX OVER WC ADJ SW BAY CENTERED NEAR **13.9N / 84.2E** (.) INTENSITY **T1.5** (.) ASSTD SCT TO BKN LOW/MED CLOUDS WITH EMBDD INT TO V INT CONVTN OVER BAY BET LAT 8.0N TO 15.0N AND LONG 82.0E TO 90.0E (MINIMUM **CTT MINUS 80-85 DEG CEL**) AND MOD TO INT CONVTN OVER S GWB ORS N COTL AP (.)

**WESTERN DISTURBANCE:-**

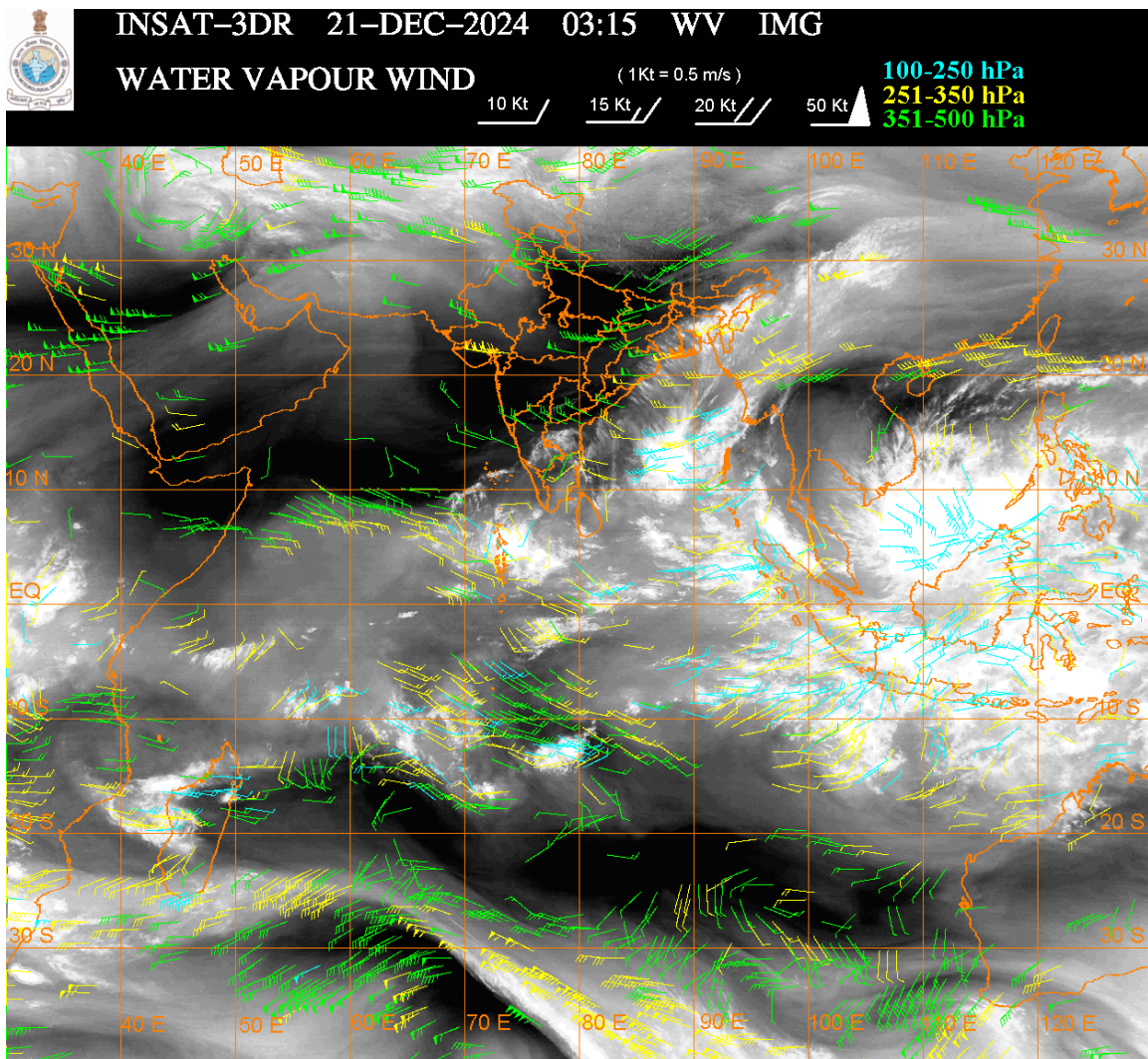
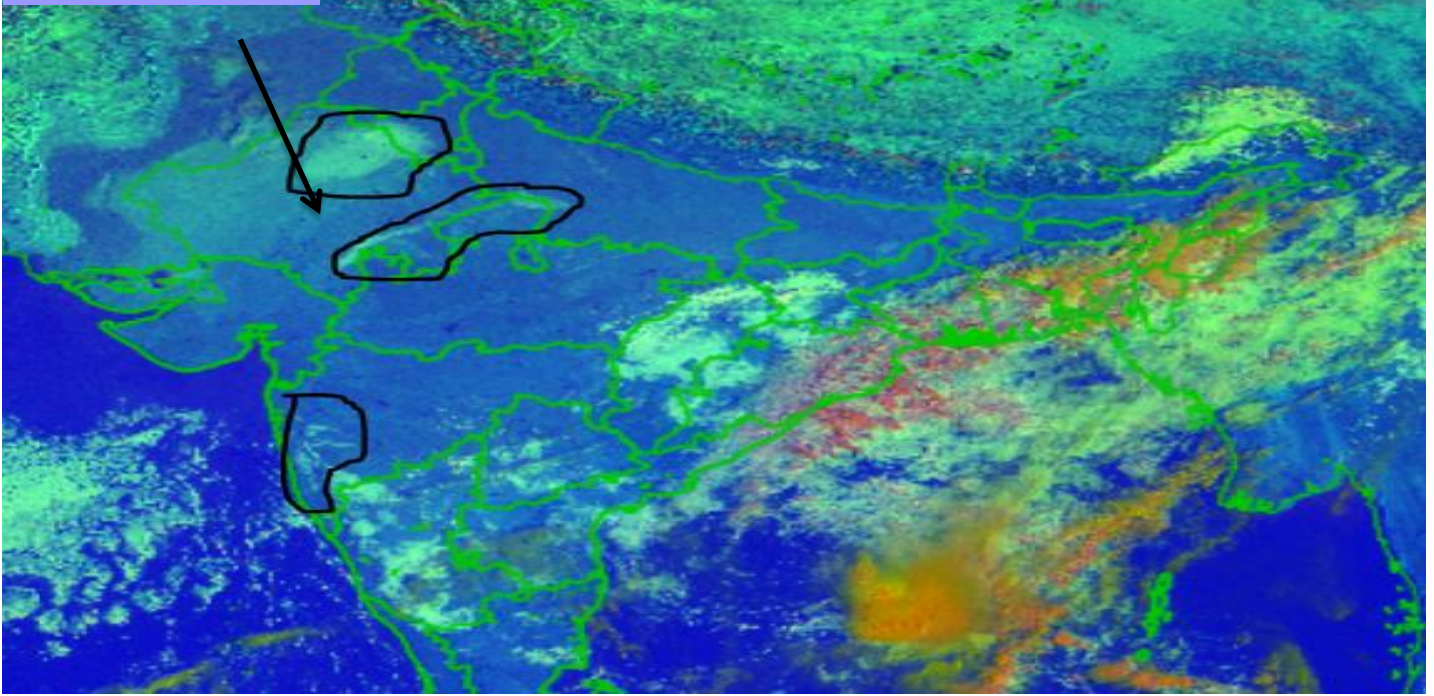
SCT MULTILAYERED CLOUDS OVER EXT N PAK J&K LADAKH & N/HOOD IN ASSW **WD** OVER THE AREA (.)

**FOG/LOW CLOUDS :-**

DAY MICROPHYSICS COMPOSITE RGB IMAGERY AT 0245 INDICATES FOG/LOW CLOUDS OVER NORTH RAJ ADJ W HARY NW MP ADJ S UP KKN S MAHA (.)

FOG/LOW CLOUDS

DAY MICROPHYSICS COMPOSITE IMAGERY AT 0245 UTC



**CLOUDS DESCRIPTION WITHIN INDIA:-**

**NORTH:-**

SCT LOW/MED CLOUDS WITH EMBDD ISOL WK TO MOD CONVTN OVER LADAKH J&K N HP N UTRKND (.) ISOL LOW/MED CLOUDS OVER S HP S UTRKND (.)

**EAST:-**

SCT LOW/MED CLOUDS WITH EMBDD MOD TO INT CONVTN OVER ORS S GWB NAGA MANI MIZO TRP E ASSAM (.) SCT LOW/MED CLOUDS WITH EMBDD WK TO MOD CONVTN OVER N GWB JHRKND CHTGH SKM MEGHA ARUPR & BD (.) SCT LOW/MED CLOUDS OVER E BHR SHWB (.)

**WEST:-**

ISOL LOW/MED CLOUDS WITH EMBDD WK CONV TN OVER S RAJ SW MP MAHA GOA (.)

**SOUTH:-**

ISOL TO SCT LOW/MED CLOUDS WITH EMBDD MOD TO INT CONV TN OVER N TN ANDAMAN & NICOBAR ILS (.) SCT LOW/MED CLOUDS WITH EMBDD WK CONV TN OVER SIK (.) SCT LOW/MED CLOUDS OVER REST KRNTK S TN KER TLNGN RYLSM COTL AP & LKSDP ILS (.)

**ARABIAN SEA:-**

SCT LOW/MED CLOUDS WITH EMBDD INT TO V INT CONV TN OVER SE ARSEA ADJ EQUATORIAL INDIAN OCEAN MALDIVIES & COMORIN AREA (MINIMUM **CTT MINUS 70-75 DEG CEL**) (.) SCT LOW/MED CLOUDS WITH EMBDD MOD TO INT CONV TN OVER LKSDP ILS AND ISOL WK TO MOD CONV TN OVER REST ARSEA (.)

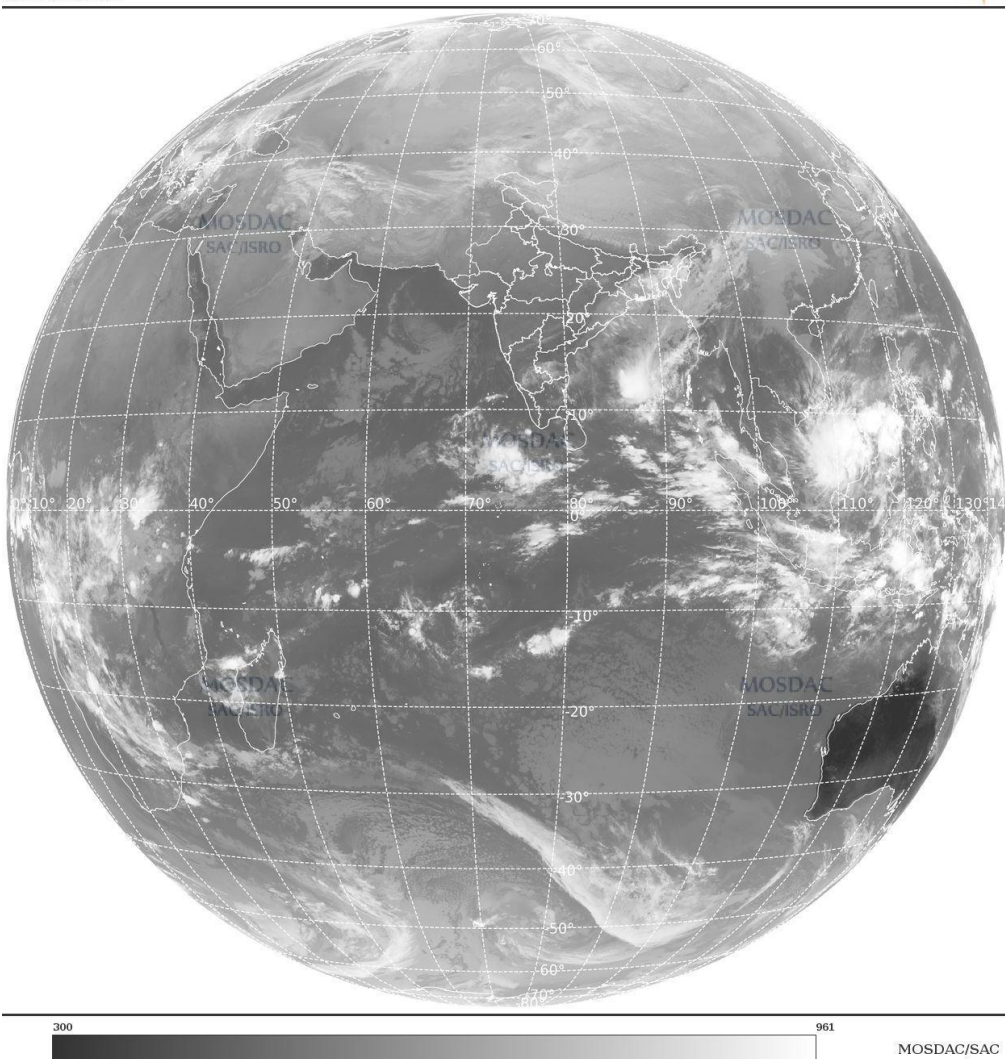
**BAY OF BENGAL & ANDAMAN SEA:-**

SCT TO BKN LOW/MED CLOUDS WITH EMBDD INT TO V INT CONV TN OVER SOUTH ADJ CENTRAL BAY SOUTH ANDAMAN SEA (MINIMUM **CTT MINUS 70-85 DEG CEL**) (.) SCT LOW/MED CLOUDS WITH EMBDD MOD TO INT CONV TN OVER NORTH BAY (.)

**CLOUDS DESCRIPTION OUTSIDE INDIA:**

SAT : INSAT-3DR IMG  
Thermal Infrared1 Count 10.8 um  
LIB FULL DISK

21-12-2024/(0245 to 0312) GMT  
21-12-2024/(0815 to 0842) IST



SCT LOW/MED CLOUDS WITH EMBDD MOD TO INT CONV TN OVER SRILANKA MALDIVES YELLOW SEA MYANMAR SOUTH THAILAND GULF OF THAILAND CAMBODIA VIETNAM SUMATRA STR OF MALACCA MALAYSIA BORNEO SOUTH CHINA SEA JAVA ILS & SEA CELEBES ILS & SEA PHILIPPINES SULU SEA NORTH MADAGASCAR MOZAMBIQUE CHANNEL AND OVER INDIAN OCEAN BET LAT 5.0N TO 20.0S LONG 40.0E TO 125.0E (.)

TOO 21/0945 EF=

NNNN

**LEGEND:-**

|  |                     |  |                   |
|--|---------------------|--|-------------------|
| <b>REGION</b>  | <b>NORTH</b>        | <b>J&amp;K HP PJB HARY DLH UP UTRKND</b>                     |                   |
|  | <b>EAST</b>         | <b>BHR JHRKND CHTGH ORS WB SKM NORTH- EAST STATES</b>        |                   |
|  | <b>WEST</b>         | <b>RAJ MP GUJ MAHA GOA</b>                                   |                   |
|  | <b>SOUTH</b>        | <b>TLNGN AP KRNTK KER TN LKSDP ANDAMAN &amp; NICOBAR ILS</b> |                   |
| <b>CLOUD DISTRIBUTION</b>  | <b>ISOL</b>         | <b>ISOLATED (LESS THAN 25%)</b>                              |                   |
|  | <b>SCT</b>          | <b>SCATTERED (25 TO 50%)</b>                                 |                   |
|  | <b>BKN</b>          | <b>BROKEN (51 TO 75%)</b>                                    |                   |
|  | <b>SLD</b>          | <b>SOLID (GREATER THAN 75%)</b>                              |                   |
| <b>CLOUDS TOP TEMPERATURE</b>  | <b>CTT</b>          | <b>CLOUD TOP TEMPERATURE</b>                                 |                   |
| <b>CONVECTION</b>  | <b>WK CONVTN</b>    | <b>WEAK CONVECTION (CTT GREATER THAN -25°C)</b>              |                   |
|  | <b>MOD CONVTN</b>   | <b>MODERATE CONVECTION (CTT BETWEEN -25°C TO -40°C)</b>      |                   |
|  | <b>INT CONVTN</b>   | <b>INTENSE CONVECTION (CTT BETWEEN -41°C TO -70°C)</b>       |                   |
|  | <b>V INT CONVTN</b> | <b>VERY INTENSE CONVECTION (CTT LESS THAN -70°C)</b>         |                   |
| <b>METEOROLOGICAL SUB- DIVISIONS, STATES &amp; UNION TERRITORIES</b> | <b>ARUPR</b>        | <b>ARUNACHAL PRADESH</b>                                     |                   |
|  | <b>BHR</b>          | <b>BIHAR</b>   |                   |
|  | <b>CHTGH</b>        | <b>CHHATTISGARH</b>  |                   |
|  | <b>COTL AP</b>      | <b>COASTAL ANDHRA PRADESH</b>                                |                   |
|  | <b>COTL KRNTK</b>   | <b>COASTAL KARNATAKA</b>                                     |                   |
|  | <b>COTL ORS</b>     | <b>COASTAL ORISSA</b>  |                   |
|  | <b>GUJ</b>          | <b>GUJARAT</b>   |                   |
|  | <b>GWB</b>          | <b>GANGETIC WEST BENGAL</b>                                  |                   |
|  | <b>HARY</b>         | <b>HARYANA</b>   |                   |
|  | <b>DLH</b>          | <b>DELHI</b>   |                   |
|  | <b>HP</b>           | <b>HIMACHAL PRADESH</b>                                      |                   |
|  | <b>J&amp;K</b>      | <b>JAMMU AND KASHMIR</b>                                     |                   |
|  | <b>JHRKND</b>       | <b>JHARKHAND</b>   |                   |
|  | <b>KER</b>          | <b>KERALA</b>  |                   |
|  | <b>KKN</b>          | <b>KONKAN</b>  |                   |
|  | <b>LKSDP</b>        | <b>LAKSHADWEEP</b>   |                   |
|  | <b>M MAHA</b>       | <b>MADHYA MAHARASHTRA</b>                                    |                   |
|  | <b>MAHA</b>         | <b>MAHARASHTRA</b>   |                   |
|  | <b>MANI</b>         | <b>MANIPUR</b>   |                   |
|  | <b>MEGHA</b>        | <b>MEGHALAYA</b>   |                   |
|  | <b>MIZO</b>         | <b>MIZORAM</b>   |                   |
|  | <b>MP</b>           | <b>MADHYA PRADESH</b>  |                   |
|  |                     | <b>MRTHWD</b>  | <b>MARATHWADA</b> |
|  |                     | <b>NAGA</b>  | <b>NAGALAND</b>   |
| <b>N COTL AP</b>   |                     | <b>NORTH COASTAL ANDHRA PRADESH</b>                          |                   |

|                      |                        |                                  |
|----------------------|------------------------|----------------------------------|
|                      | <b>NIK</b>             | <b>NORTH INTERIOR KARNATAKA</b>  |
|                      | <b>ORS</b>             | <b>ORISSA</b>                    |
|                      | <b>PJB</b>             | <b>PUNJAB</b>                    |
|                      | <b>RAJ</b>             | <b>RAJASTHAN</b>                 |
|                      | <b>RYLSM</b>           | <b>RAYALASEEMA</b>               |
|                      | <b>SAU &amp; KUTCH</b> | <b>SAURASHTRA &amp; KUTCH</b>    |
|                      | <b>SHWB</b>            | <b>SUB-HIMALAYAN WEST BENGAL</b> |
|                      | <b>SIK</b>             | <b>SOUTH INTERIOR KARNATAKA</b>  |
|                      | <b>SKM</b>             | <b>SIKKIM</b>                    |
|                      | <b>TLNGN</b>           | <b>TELANGANA</b>                 |
|                      | <b>TN</b>              | <b>TAMIL NADU</b>                |
|                      | <b>TRP</b>             | <b>TRIPURA</b>                   |
|                      | <b>UP</b>              | <b>UTTAR PRADESH</b>             |
|                      | <b>UTRKND</b>          | <b>UTTARAKHAND</b>               |
|                      | <b>VID</b>             | <b>VIDHARBHA</b>                 |
|                      | <b>SHWB</b>            | <b>SUB HIMALAYAN WEST BENGAL</b> |
|                      | <b>GWB</b>             | <b>GANGETIC WEST BENGAL</b>      |
|                      | <b>ARSEA</b>           | <b>ARABIAN SEA</b>               |
|                      | <b>ILS</b>             | <b>ISLANDS</b>                   |
| <b>MISCELLANEOUS</b> | <b>ASSW</b>            | <b>IN ASSOCIATION WITH</b>       |
|                      | <b>ASSTD</b>           | <b>ASSOCIATED</b>                |
|                      | <b>LLC</b>             | <b>LOW LEVEL CIRCULATION</b>     |
|                      | <b>EMBDD</b>           | <b>EMBEDDED</b>                  |
|                      | <b>N/HOOD</b>          | <b>NEIGHBOURHOOD</b>             |
|                      | <b>EXT</b>             | <b>EXTREME</b>                   |