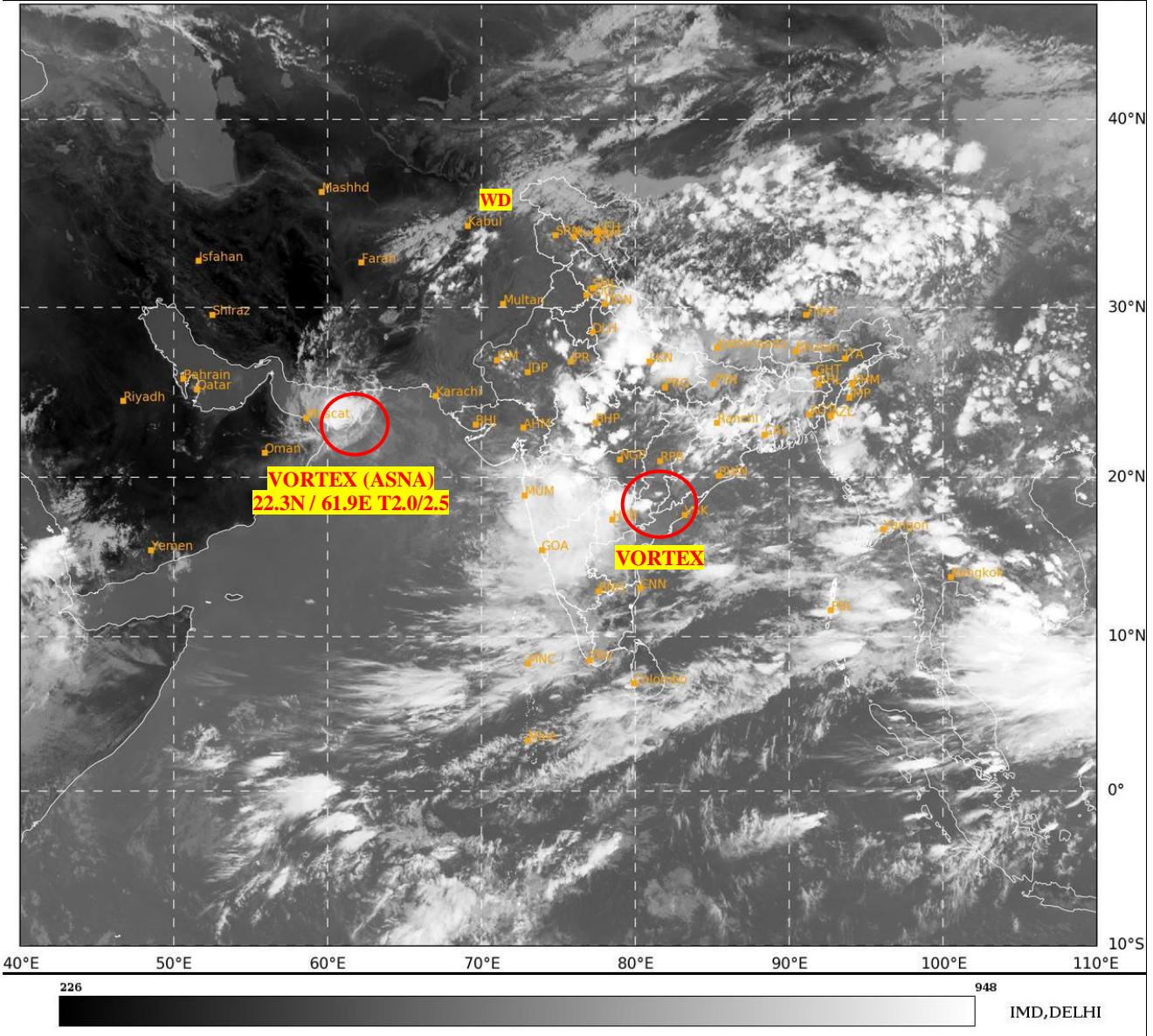




**SATELLITE BULLETIN BASED ON SATELLITE
IMAGERIES AND PRODUCTS**
01.09.2024 TIME 0900 UTC

SAT : INSAT-3DR IMG
IMG_TIR1 10.8 um
L1C Mercator

01-09-2024/(0915 to 0942) GMT
01-09-2024/(1445 to 1512) IST



TCIN50 DEMS 010900

SATELLITE BULLETIN BASED ON INSAT-3DR PIC OF 010915 UTC (.)

REGION COVERED BETWEEN LAT 50.0°N TO 35.0°S AND LONG 40.0°E TO 125.0°E (.)

SALIENT FEATURES:-

VORTEX (ASNA) OVER NORTH WEST ARABIAN SEA & N/HOOD:-

VORTEX (ASNA) OVER NORTH WEST ARSEA & N/HOOD HAS DISORGANISED AND LAY CENTERED NEAR 22.3N / 61.9E (.) INTENSITY T2.0/2.5 (.) ASSTD SCT TO BKN LOW/MED CLOUDS WITH EMBDD INTENSE CONVTN OVER NW ARSEA (MINIMUM CTT MINUS 70 DEG CEL) AND MOD TO INT CONVTN OVER SE IRAN ADJ S PAK GULF OF OMAN & N OMAN (.)

VORTEX OVER S ORS ADJ S CHTGH & N/HOOD:-

VORTEX OVER S ORS ADJ S CHTGH & N/HOOD (.) ASSTD BKN LOW/MED CLOUDS WITH EMBDD INT TO V INT CONVTN OVER TLNGN RYLSMA NIK MAHA (MINIMUM CTT MINUS 93 DEG CEL) (.)

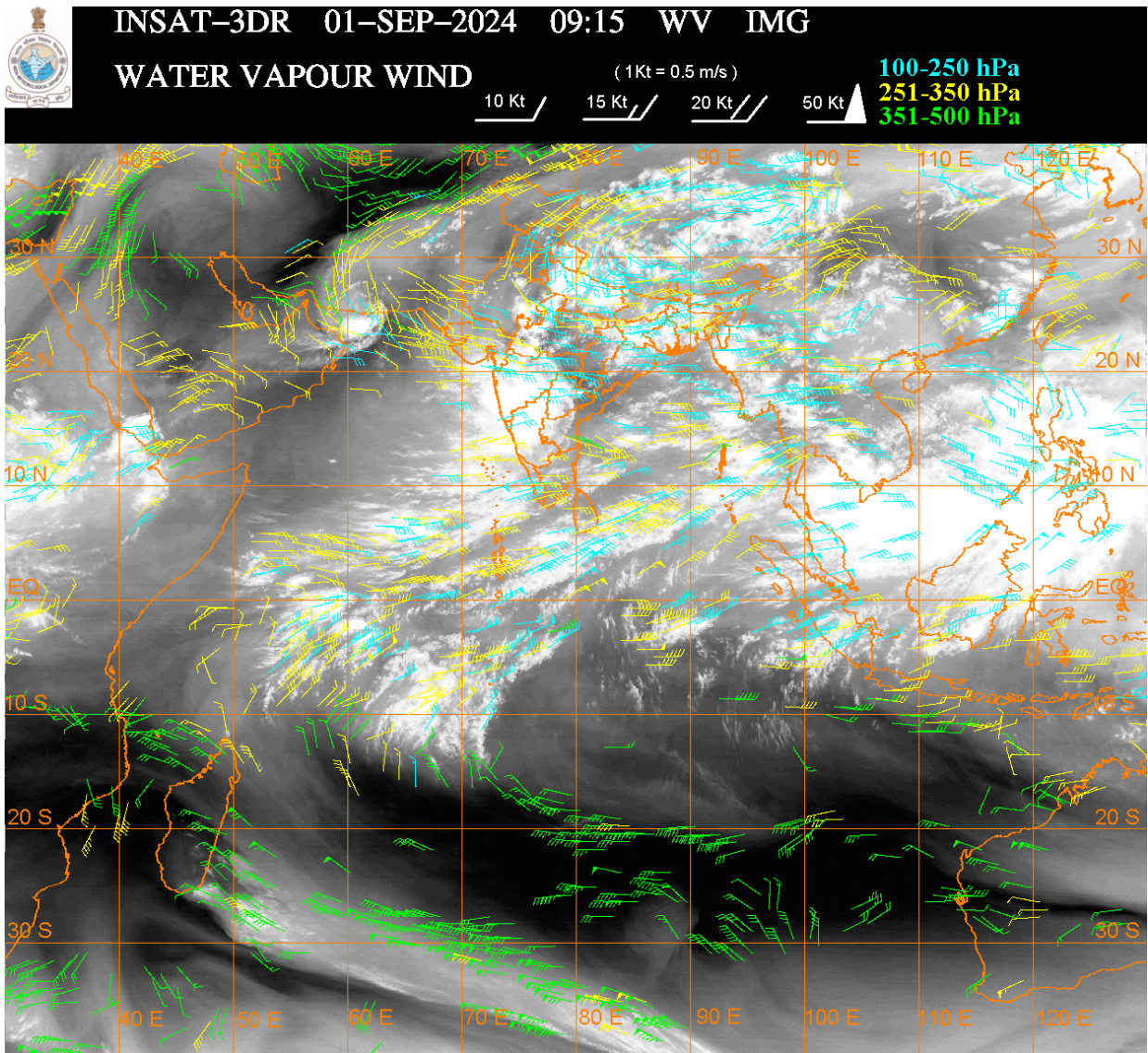
WESTERN DISTURBANCE (WD):-

SCT MULTILAYERED CLOUDS OVER N PAK LADAKH & N/HOOD IN ASSW WD OVER THE AREA (.)

CONVECTIVE / THUNDERSTORM ACTIVITY:-

INTENSE TO VERY INTENSE CONVECTIVE / THUNDERSTORM ACTIVITY OBSERVED OVER N & E RAJ UTRKND S NEPAL UP JHRKND EXTREME S CHTGH SHWB GWB ORS W VID MRTHWD NIK TLNGN RYLSM S TN & ANDAMAN ILS (MINIMUM **CTT MINUS 80-93 DEG CEL) (.)**

MODERATE TO INTENSE CONVECTIVE / THUNDERSTORM ACTIVITY OBSERVED OVER HP S GUJ KKN GOA MADHYA MAHA REST KRNTK KER REST CHTGH BHR NE STATES LKSDP ILS & NICOBAR ILS (MINIMUM **CTT MINUS 50-70 DEG CEL) (.)**



CLOUDS DESCRIPTION WITHIN INDIA:-

NORTH:-

SCT LOW/MED CLOUDS WITH EMBDD INT TO V INT CONVTN OVER UTRKND UP S NEPAL (.) SCT LOW/MED CLOUDS WITH EMBDD MOD TO INT CONVTN OVER HP AND WK TO MOD CONVTN OVER LADAKH J&K (.) SCT LOW/MED CLOUDS OVER PJB HARY DLH (.)

EAST:-

SCT TO BKN LOW/MED CLOUDS WITH EMBDD INT TO V INT CONVTN OVER JHRKND EXTREME S CHTGH GWB SHWB N ORS & BD (.) SCT LOW/MED CLOUDS WITH EMBDD MOD TO INT CONVTN OVER BHR REST CHTGH S ORS NE STATES AND WK TO MOD CONVTN OVER SKM (.)

WEST:-

SCT TO BKN LOW/MED CLOUDS WITH EMBDD INT TO V INT CONVTN OVER N & E RAJ MP W VID MRTHWD (.) SCT LOW/MED CLOUDS WITH EMBDD MOD TO INT CONVTN OVER SE GUJ REST MAHA GOA AND WK TO MOD CONVTN OVER REST RAJ (.) SCT LOW/MED CLOUDS OVER REST GUJ (.)

SOUTH:-

SCT TO BKN LOW/MED CLOUDS WITH EMBDD INT TO V INT CONVTN OVER NIK TLNGN RYLSM ANDAMAN ILS (MINIMUM **CTT MINUS 90 DEG CEL) (.) SCT LOW/MED CLOUDS WITH EMBDD MOD TO INT CONVTN OVER REST KRNTK KER LKSDP ILS & NICOBAR ILS AND WK TO MOD CONVTN OVER COTL AP TN (.)**

ARABIAN SEA:-

SCT TO BKN LOW/MED CLOUDS WITH EMBDD INT CONVTN OVER NW & SE ARSEA LKSDP ILS AREA (.) SCT LOW/MED CLOUDS WITH EMBDD MOD TO INT CONVTN OVER EC ARSEA MALDIVES & COMORIN AREA AND ISOL WK TO MOD CONVTN OVER REST ARSEA GULF OF KUTCH GULF OF CAMBAY (.)

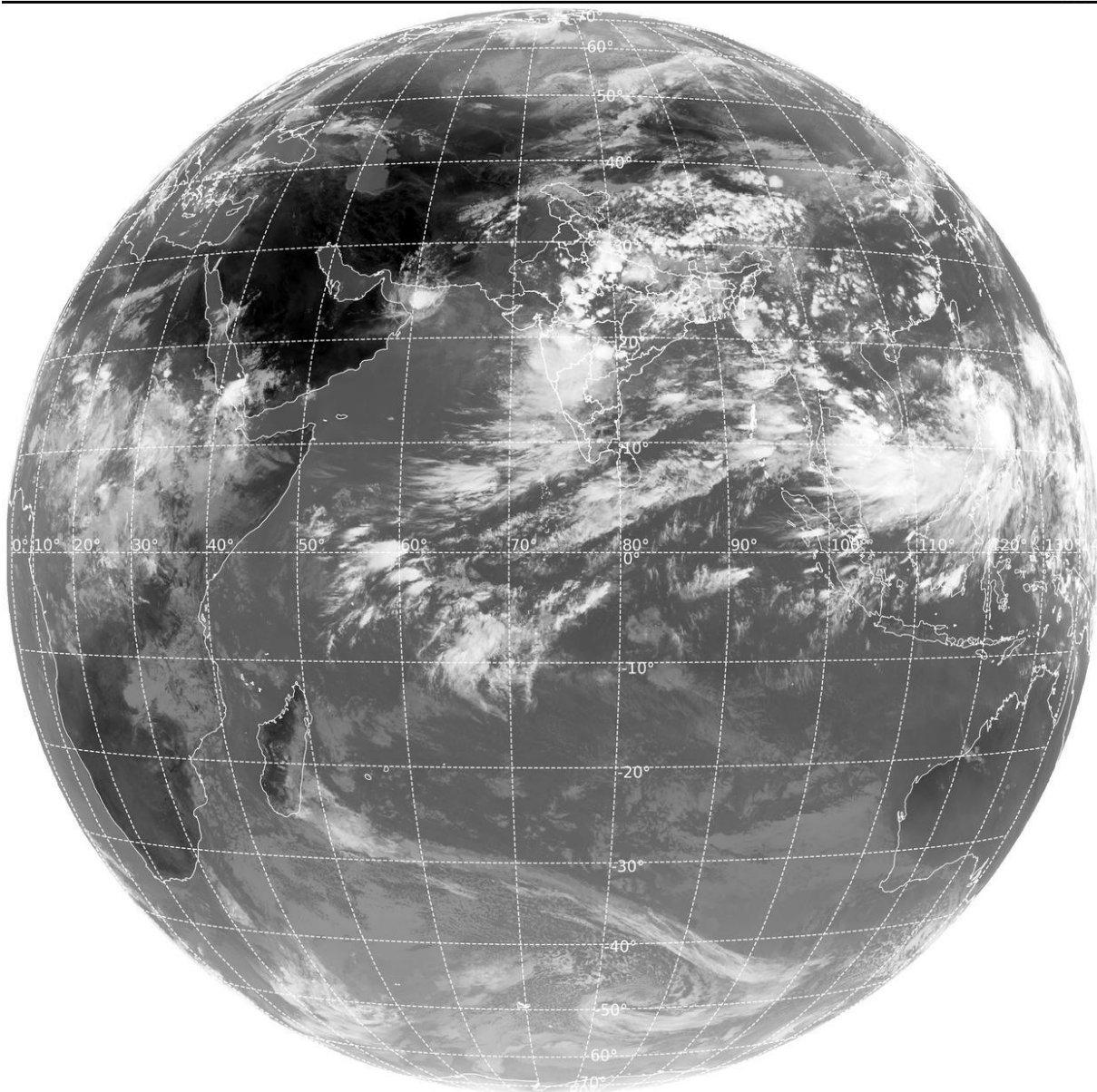
BAY OF BENGAL & ANDAMAN SEA:-

SCT TO BKN LOW/MED CLOUDS WITH EMBDD INT TO V INT CONVTN OVER CENTRAL BAY ANDAMAN SEA (.) SCT TO BKN LOW/MED CLOUDS WITH EMBDD MOD TO INT CONVTN OVER REST BAY (.)

CLOUDS DESCRIPTION OUTSIDE INDIA:-

SAT : INSAT-3DR IMG
Thermal Infrared1 Count 10.8 um
L1B FULL DISK

01-09-2024/(0915 to 0942) GMT
01-09-2024/(1445 to 1512) IST



227

958

IMD,DELHI

SCT LOW/MED CLOUDS WITH EMBDD MOD TO INT CONVTN OVER SRI LANKA MALDIVES PAK NEPAL BHUTAN TIBET CHINA MYANMAR THAILAND GULF OF THAILAND CAMBODIA LAOS VIETNAM GULF OF TONKIN SUMATRA STR OF MALACCA MALAYSIA BORNEO SOUTH CHINA SEA JAVA SEA CELEBES ILS & SEA PHILIPPINES SULU SEA YELLOW SEA MADAGASCAR AND OVER INDIAN OCEAN BET LAT 5.0N TO 12.0S LONG 50.0E TO 100.0E (.)

TOO 01/1600 HRS IST=

NNNN

LEGEND:-

REGION	NORTH	J&K HP PJB HARY DLH UP UTRKND
	EAST	BHR JHRKND CHTGH OR WB SKM NORTH- EAST STATES
	WEST	RAJ MP GUJ MAHA GOA
	SOUTH	TLNGN AP KRNTK KER TN LKSDP ANDAMAN & NICOBAR ILS
CLOUD DISTRIBUTION	ISOL	ISOLATED (LESS THAN 25%)
	SCT	SCATTERED (25 TO 50%)
	BKN	BROKEN (51 TO 75%)
	SLD	SOLID (GREATER THAN 75%)
CLOUDS TOP TEMPERATURE	CTT	CLOUD TOP TEMPERATURE
CONVECTION	WK CONVTN	WEAK CONVECTION (CTT GREATER THAN -25°C)
	MOD CONVTN	MODERATE CONVECTION (CTT BETWEEN -25°C TO -40°C)
	INT CONVTN	INTENSE CONVECTION (CTT BETWEEN -41°C TO -70°C)
	V INT CONVTN	VERY INTENSE CONVECTION (CTT LESS THAN -70°C)
METEOROLOGICAL SUB- DIVISIONS, STATES & UNION TERRITORIES	ARUPR	ARUNACHAL PRADESH
	BHR	BIHAR
	CHTGH	CHHATTISGARH
	COTL AP	COASTAL ANDHRA PRADESH
	COTL KRNTK	COASTAL KARNATAKA
	COTL ORS	COASTAL ORISSA
	GUJ	GUJARAT
	GWB	GANGETIC WEST BENGAL
	HARY	HARYANA
	DLH	DELHI
	HP	HIMACHAL PRADESH
	J&K	JAMMU AND KASHMIR
	JHRKND	JHARKHAND
	KER	KERALA
	KKN	KONKAN
	LKSDP	LAKSHADWEEP
	M MAHA	MADHYA MAHARASHTRA
	MAHA	MAHARASHTRA
	MANI	MANIPUR
	MEGHA	MEGHALAYA
	MIZO	MIZORAM
MP	MADHYA PRADESH	
	MRTHWD	MARATHWADA
	NAGA	NAGALAND
	N COTL AP	NORTH COASTAL ANDHRA PRADESH

	NIK	NORTH INTERIOR KARNATAKA
	ORS	ORISSA
	PJB	PUNJAB
	RAJ	RAJASTHAN
	RYLSM	RAYALASEEMA
	SAU & KUTCH	SAURASHTRA & KUTCH
	SHWB	SUB-HIMALAYAN WEST BENGAL
	SIK	SOUTH INTERIOR KARNATAKA
	SKM	SIKKIM
	TLNGN	TELANGANA
	TN	TAMIL NADU
	TRP	TRIPURA
	UP	UTTAR PRADESH
	UTRKND	UTTARAKHAND
	VID	VIDHARBHA
	SHWB	SUB HIMALAYAN WEST BENGAL
	GWB	GANGETIC WEST BENGAL
	ARSEA	ARABIAN SEA
	ILS	ISLANDS
MISCELLANEOUS	ASSW	IN ASSOCIATION WITH
	ASSTD	ASSOCIATED
	LLC	LOW LEVEL CIRCULATION
	EMBDD	EMBEDDED
	N/HOOD	NEIGHBOURHOOD
	EXT	EXTREME