



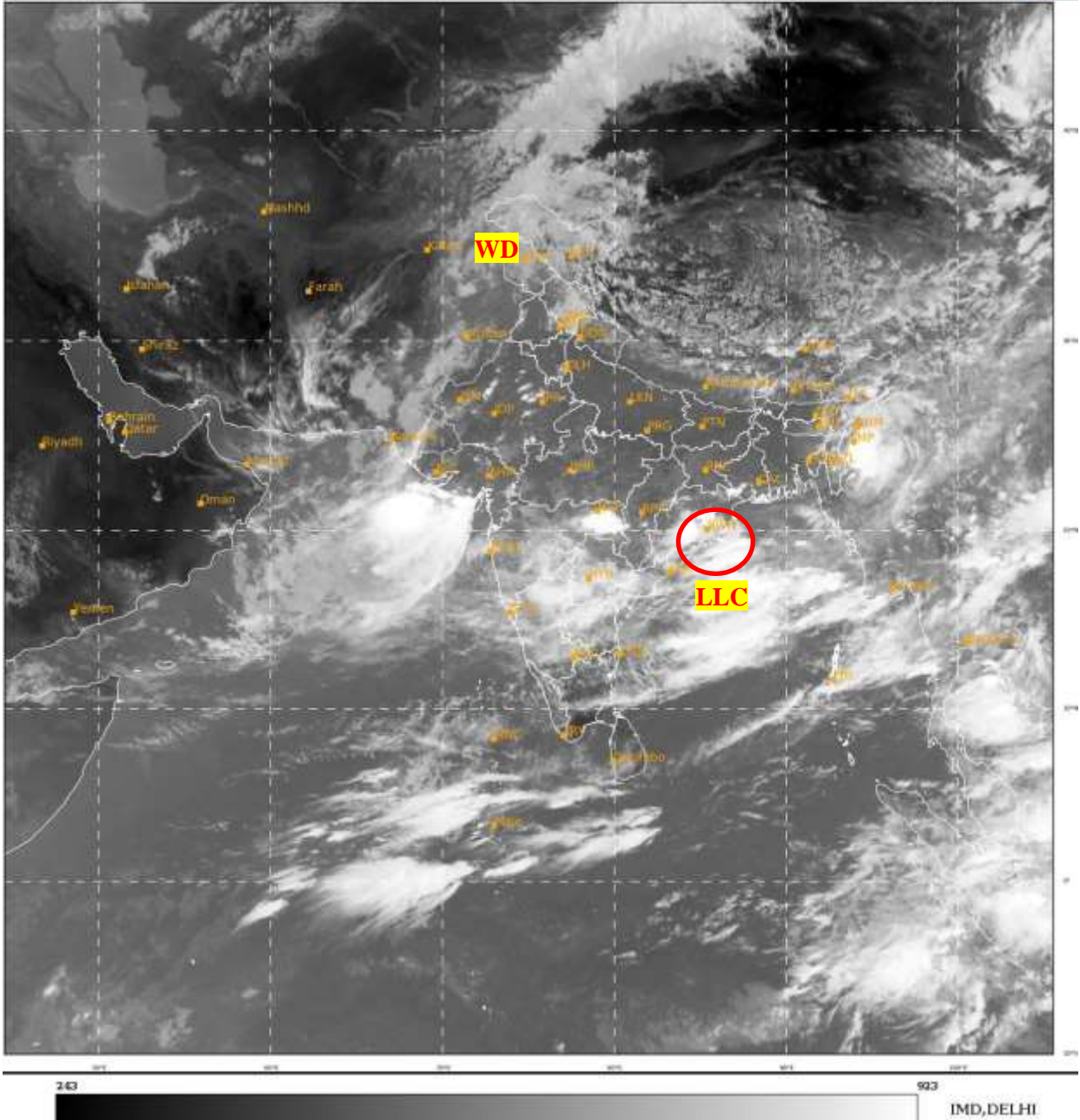
भारत मौसम विज्ञान विभाग  
पृथ्वी विज्ञान मंत्रालय  
India Meteorological Department  
Ministry of Earth Sciences



**SATELLITE BULLETIN BASED ON SATELLITE  
IMAGERIES AND PRODUCTS**  
**20.07.2023 TIME 0600 UTC**

SAT : INSAT-3D IMG  
IMG\_TIR1 10.8 um  
LIC Mercator

20-07-2023/(0600 to 0626) GMT  
20-07-2023/(1130 to 1156) IST



TCIN50 DEMS 200600

SATELLITE BULLETIN BASED ON INSAT-3DR PIC OF 200600 UTC (.)

REGION COVERED BETWEEN LAT 50.0°N TO 35.0°S AND LONG 40.0°E TO 125.0°E (.)

**SALIENT FEATURES:-**

**LLC OVER NW ADJ WC BAY & ADJ S ORS – N AP COASTS :-**

SCT TO BKN LOW/MED CLOUDS WITH EMBDD INT TO V INT CONVTN OVER NW ADJ WC & ADJ S ORS-N AP COASTS IN ASSW LOW LEVEL CIRCULATION (LLC) OVER THE AREA (.)  
MINIMUM CTT MINUS 88 DEG C (.)

**WESTERN DISTURBANCE (WD):-**

SCT TO BKN MULTILAYERED CLOUDS OVER N PAK LADAKH J&K HP PJB & N/HOOD IN ASSW  
WD OVER THE AREA (.)

**THUNDERSTORM / CONVECTIVE ACTIVITY:-**

INTENSE THUNDERSTORM / CONVECTIVE ACTIVITY OBSERVED OVER SW GUJ NE VID E ORS  
MANI (.)



INSAT-3D 20-JUL-2023 05:30 WV IMG

WATER VAPOUR WIND

(1Kt = 0.5 m/s)

10 Kt

15 Kt

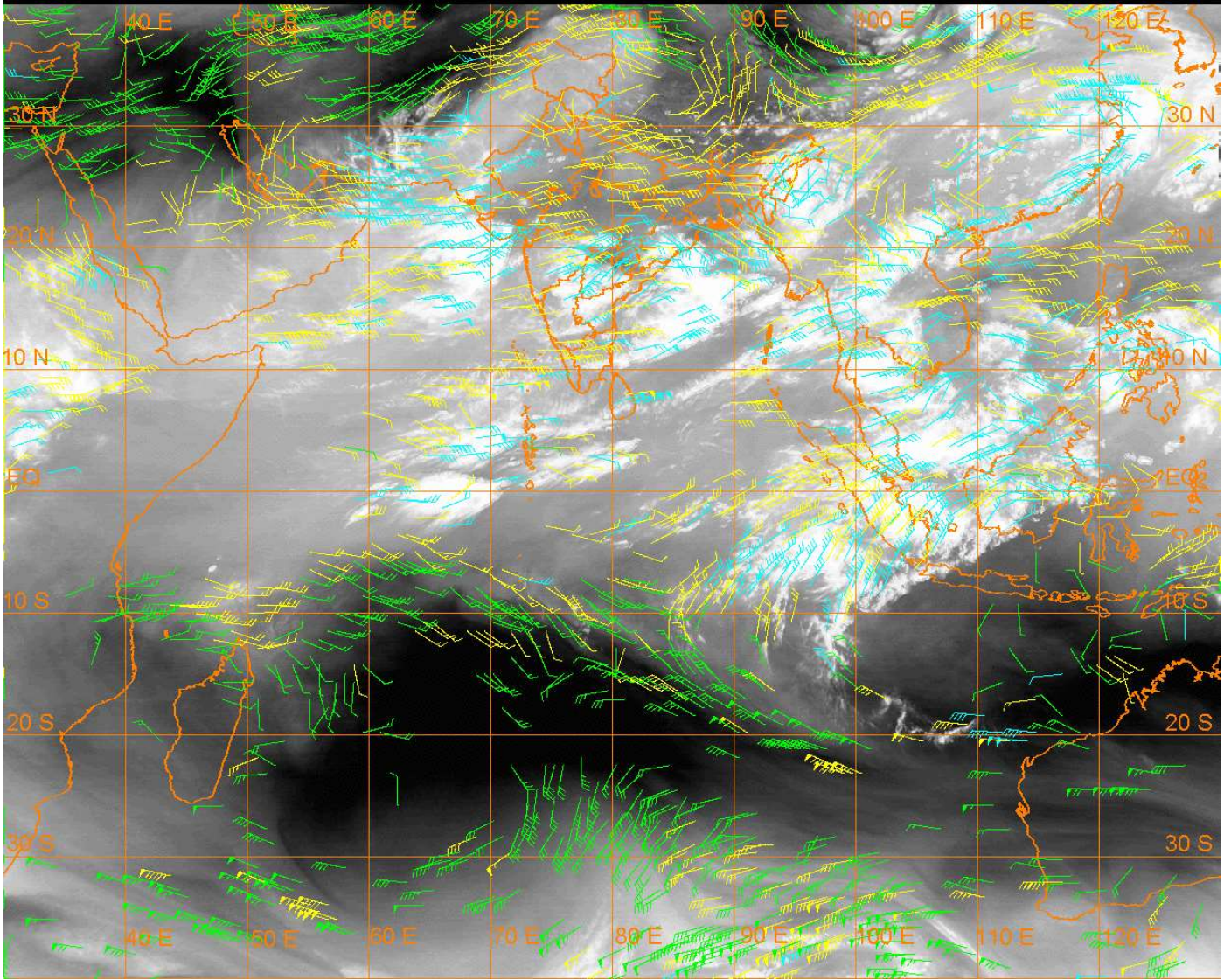
20 Kt

50 Kt

100-250 hPa

251-350 hPa

351-500 hPa



### **CLOUDS DESCRIPTION WITHIN INDIA:-**

#### **NORTH:-**

SCT LOW/MED CLOUDS WITH EMBDD WK TO MOD CONVTN OVER J&K LADAKH HP UTRKND SE PJB (.) SCT LOW/MED CLOUDS OVER REST PJB HARY DLH UP (.)

#### **EAST:-**

SCT TO BKN LOW/MED CLOUDS WITH EMBDD INT TO V INT CONVTN OVER SE ORS MANI (MINIMUM CTT MINUS 88 DEG C) (.) SCT LOW/MED CLOUDS WITH EMBDD MOD TO INT CONVTN OVER S CHTGH NE ORS SW GWB NAGA NE ASAAM AND ISOL WK TO MOD CONVTN OVER REST ORS SKM E MEGHA S ASSAM MIZO ARUPR (.) SCT LOW/MED CLOUDS OVER N CHTGH BHR JHRKND REST GWB SHWB REST NE STATES (.)

#### **WEST:-**

SCT TO BKN LOW/MED CLOUDS WITH EMBDD INT TO V INT CONVTN OVER SW GUJ E VID (MINIMUM CTT MINUS 90 DEG C) (.) SCT LOW/MED CLOUDS WITH EMBDD MOD TO INT CONVTN OVER N RAJ MRTWD AND WK TO MOD CONVTN OVER W RAJ REST GUJ SW MP REST MAHA GOA (.) ISOL TO SCT LOW/MED CLOUDS OVER REST PARTS OF THE REGION (.)

#### **SOUTH:-**

SCT TO BKN LOW/MED CLOUDS WITH EMBDD MOD TO INT CONVTN OVER S TLNGN N COTL AP NIK N RYLSM ANDAMAN ILS AND WK TO MOD CONVTN OVER N TLNGN REST KRNTK S RYLSM S COTL AP KER TN LKSDP ILS NICOBAR ILS (.)

#### **ARABIAN SEA:-**

SCT TO BKN LOW/MED CLOUDS WITH EMBDD INT TO V INT CONVTN OVER NE & EC ARSEA (.) SCT LOW/MED CLOUDS WITH EMBDD WK TO MOD CONVTN OVER REST ARSEA GULF OF KUTCH & LKSDP ILS AREA (.)

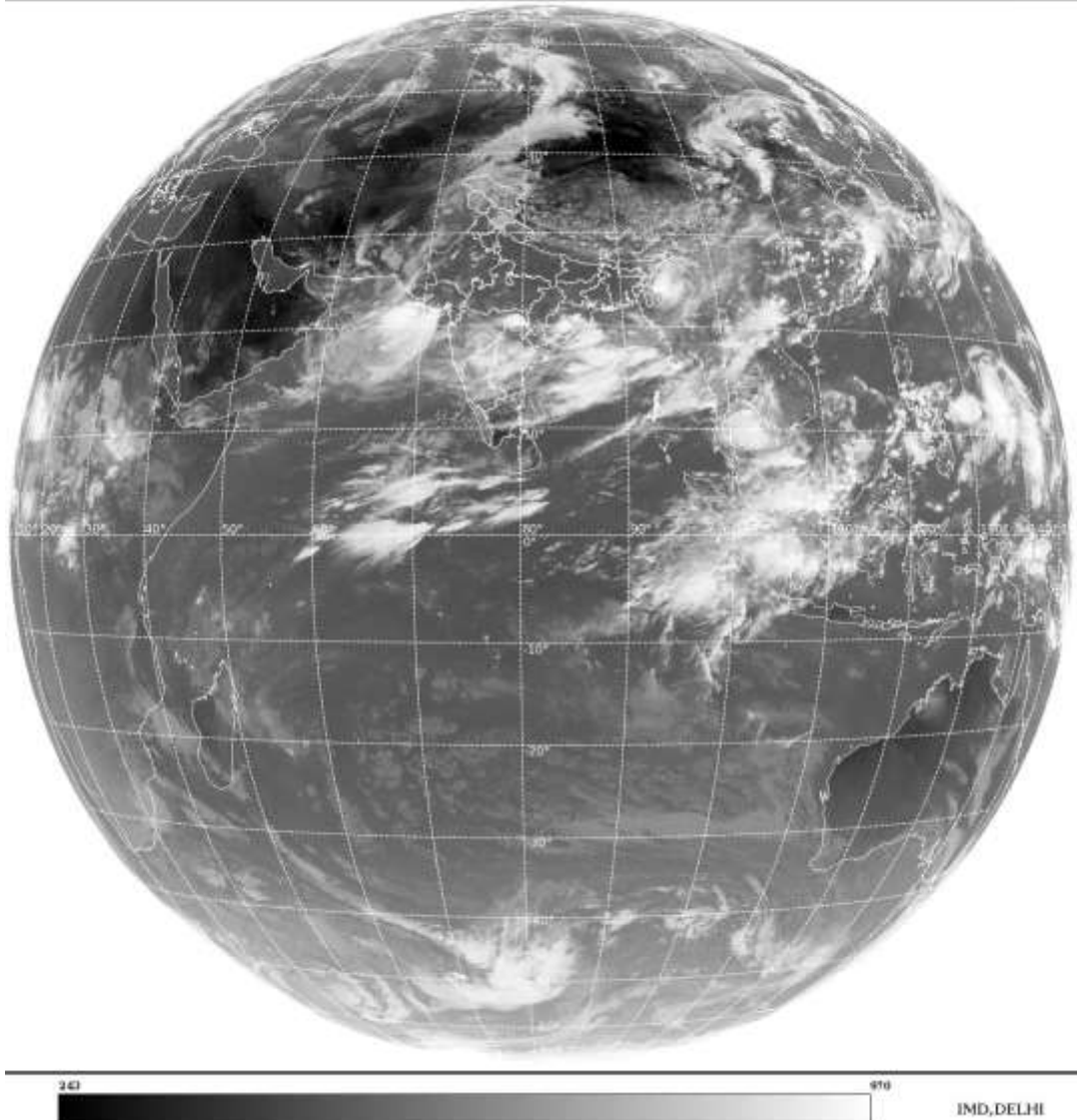
**BAY OF BENGAL & ANDAMAN SEA:-**

SCT TO BKN LOW/MED CLOUDS WITH EMBDD INT TO V INT CONV TN OVER NW & CENTRAL BAY (.) SCT LOW/MED CLOUDS WITH EMBDD MOD TO INT CONV TN OVER SW BAY N ANDAMAN SEA AND ISOL WK TO MOD CONV TN OVER REST BAY S ANDAMAN SEA (.)

**CLOUDS DESCRIPTION OUTSIDE INDIA:-**

SAT : INSAT-3D IMG  
Thermal Infrared1 Count 10.8 um  
L1B FULL DISK

20-07-2023(0600 to 0626) GMT  
20-07-2023(1130 to 1156) IST



SCT LOW/MED CLOUDS WITH EMBDD MOD TO INT CONV TN OVER PAK E TIBET CHINA MYANMAR THAILAND GULF OF THAILAND CAMBODIA LAOS N VIETNAM GULF OF TONKIN SUMATRA STR OF MALACCA MALAYSIA BORNEO SOUTH CHINA SEA PHILIPPINES YELLOW SEA EAST CHINA SEA AND OVER INDIAN OCEAN BET LAT 5.0N TO 10.0S LONG 82.0E TO 105.0E AND BET LAT 5.0N TO 2.0S LONG 58.0E TO 82.0E (.)

TOO 20/1230 HRS IST=

NNNN

**LEGEND:-**

REGION	NORTH	J&K HP PJB HARY DLH UP UTRKND
	EAST	BHR JHRKND CHTGH OR WB SKM NORTH- EAST STATES
	WEST	RAJ MP GUJ MAHA GOA
	SOUTH	TLNGN AP KRNTK KER TN LKSDP ANDAMAN & NICOBAR ILS
	ISOL	ISOLATED (LESS THAN 25%)

<b>CLOUD DISTRIBUTION</b>	<b>SCT</b>	<b>SCATTERED (25 TO 50%)</b>	
	<b>BKN</b>	<b>BROKEN (51 TO 75%)</b>	
	<b>SLD</b>	<b>SOLID (GREATER THAN 75%)</b>	
<b>CLOUDS TOP TEMPERATURE</b>	<b>CTT</b>	<b>CLOUD TOP TEMPERATURE</b>	
<b>CONVECTION</b>	<b>WK CONV TN</b>	<b>WEAK CONVECTION (CTT GREATER THAN <math>-25^{\circ}\text{C}</math>)</b>	
	<b>MOD CONV TN</b>	<b>MODERATE CONVECTION (CTT BETWEEN <math>-25^{\circ}\text{C}</math> TO <math>-40^{\circ}\text{C}</math>)</b>	
	<b>INT CONV TN</b>	<b>INTENSE CONVECTION (CTT BETWEEN <math>-41^{\circ}\text{C}</math> TO <math>-70^{\circ}\text{C}</math>)</b>	
	<b>V INT CONV TN</b>	<b>VERY INTENSE CONVECTION (CTT LESS THAN <math>-70^{\circ}\text{C}</math>)</b>	
<b>METEOROLOGICAL SUB- DIVISIONS, STATES &amp; UNION TERRITORIES</b>	<b>ARUPR</b>	<b>ARUNACHAL PRADESH</b>	
	<b>BHR</b>	<b>BIHAR</b>	
	<b>CHTGH</b>	<b>CHHATTISGARH</b>	
	<b>COTL AP</b>	<b>COASTAL ANDHRA PRADESH</b>	
	<b>COTL KRNTK</b>	<b>COASTAL KARNATAKA</b>	
	<b>COTL ORS</b>	<b>COASTAL ORISSA</b>	
	<b>GUJ</b>	<b>GUJARAT</b>	
	<b>GWB</b>	<b>GANGETIC WEST BENGAL</b>	
	<b>HARY</b>	<b>HARYANA</b>	
	<b>DLH</b>	<b>DELHI</b>	
	<b>HP</b>	<b>HIMACHAL PRADESH</b>	
	<b>J&amp;K</b>	<b>JAMMU AND KASHMIR</b>	
	<b>JHRKND</b>	<b>JHARKHAND</b>	
	<b>KER</b>	<b>KERALA</b>	
	<b>KKN</b>	<b>KONKAN</b>	
	<b>LKSDP</b>	<b>LAKSHADWEEP</b>	
	<b>M MAHA</b>	<b>MADHYA MAHARASHTRA</b>	
	<b>MAHA</b>	<b>MAHARASHTRA</b>	
	<b>MANI</b>	<b>MANIPUR</b>	
	<b>MEGHA</b>	<b>MEGHALAYA</b>	
	<b>MIZO</b>	<b>MIZORAM</b>	
	<b>MP</b>	<b>MADHYA PRADESH</b>	
		<b>MRTHWD</b>	<b>MARATHWADA</b>
		<b>NAGA</b>	<b>NAGALAND</b>
		<b>N COTL AP</b>	<b>NORTH COASTAL ANDHRA PRADESH</b>
		<b>NIK</b>	<b>NORTH INTERIOR KARNATAKA</b>
<b>ORS</b>		<b>ORISSA</b>	
<b>PJB</b>		<b>PUNJAB</b>	
<b>RAJ</b>		<b>RAJASTHAN</b>	
<b>RYLSM</b>		<b>RAYALASEEMA</b>	
<b>SAU &amp; KUTCH</b>		<b>SAURASHTRA &amp; KUTCH</b>	
<b>SHWB</b>		<b>SUB-HIMALAYAN WEST BENGAL</b>	
<b>SIK</b>		<b>SOUTH INTERIOR KARNATAKA</b>	
<b>SKM</b>		<b>SIKKIM</b>	
<b>TLNGN</b>		<b>TELANGANA</b>	

	<b>TN</b>	<b>TAMIL NADU</b>
	<b>TRP</b>	<b>TRIPURA</b>
	<b>UP</b>	<b>UTTAR PRADESH</b>
	<b>UTRKND</b>	<b>UTTARAKHAND</b>
	<b>VID</b>	<b>VIDHARBHA</b>
	<b>SHWB</b>	<b>SUB HIMALAYAN WEST BENGAL</b>
	<b>GWB</b>	<b>GANGETIC WEST BENGAL</b>
	<b>ARSEA</b>	<b>ARABIAN SEA</b>
	<b>ILS</b>	<b>ISLANDS</b>
<b>MISCELLANEOUS</b>	<b>ASSW</b>	<b>IN ASSOCIATION WITH</b>
	<b>ASSTD</b>	<b>ASSOCIATED</b>
	<b>LLC</b>	<b>LOW LEVEL CIRCULATION</b>
	<b>EMBDD</b>	<b>EMBEDDED</b>
	<b>N/HOOD</b>	<b>NEIGHBOURHOOD</b>
	<b>EXT</b>	<b>EXTREME</b>