



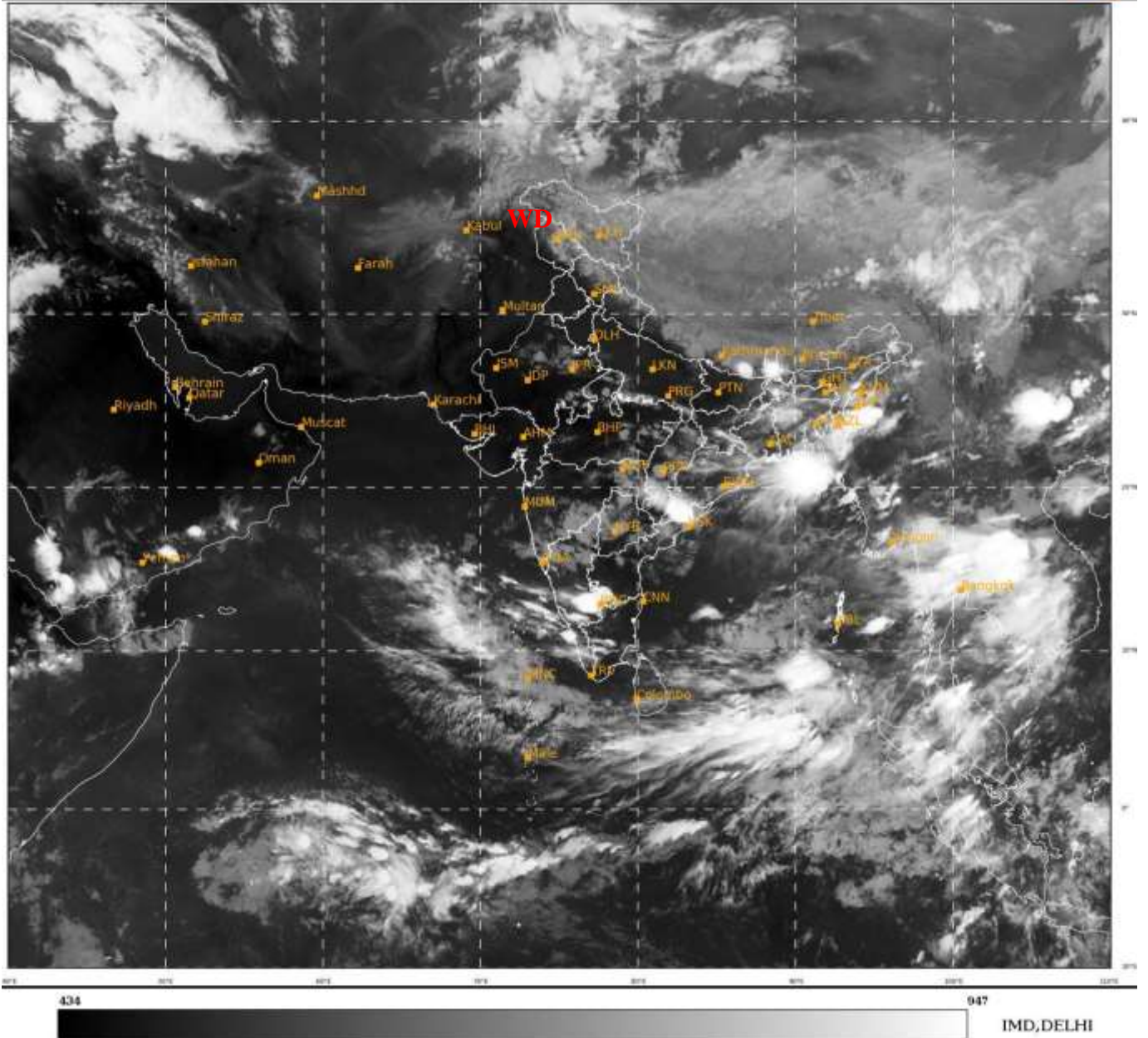
भारत मौसम विज्ञान विभाग
पृथ्वी विज्ञान मंत्रालय
India Meteorological Department
Ministry of Earth Sciences



**SATELLITE BULLETIN BASED ON SATELLITE
IMAGERIES AND PRODUCTS**
03.06.2022 TIME 1500 UTC

SAT : INSAT-3D IMG
IMG TIR1 10.8 um
LIC Mercator

03-06-2022/(1500 to 1526) GMT
03-06-2022/(2030 to 2056) IST



TCIN50 DEMS 031500

SATELLITE BULLETIN BASED ON INSAT-3D PIC OF 031500 UTC (.)

REGION COVERED BETWEEN LAT 50.0°N TO 30.0°S AND LONG 40.0°E TO 125.0°E (.)

SALIENT FEATURES:-

WESTERN DISTURBANCE (WD):-

SCT MULTILAYERED CLOUDS OVER J&K LADAKH N HP N UTRKND TIBET ADJ CHINA IN ASSW **WD** OVER THE AREA (.)

THUNDERSTORM / CONVECTIVE ACTIVITY:-

THUNDERSTORM / CONVECTIVE ACTIVITIES OBSERVED OVER EXT N BHR SKM SHWB GWB NE STATES JHRKND ORS CHTGH N COTL AP SIK S RYLSM KER W TN LKSDP ILS AREA NICOBAR ILS (.)

DUST:-

DUST NOT OBSERVED OVER INDIAN REGION (.)

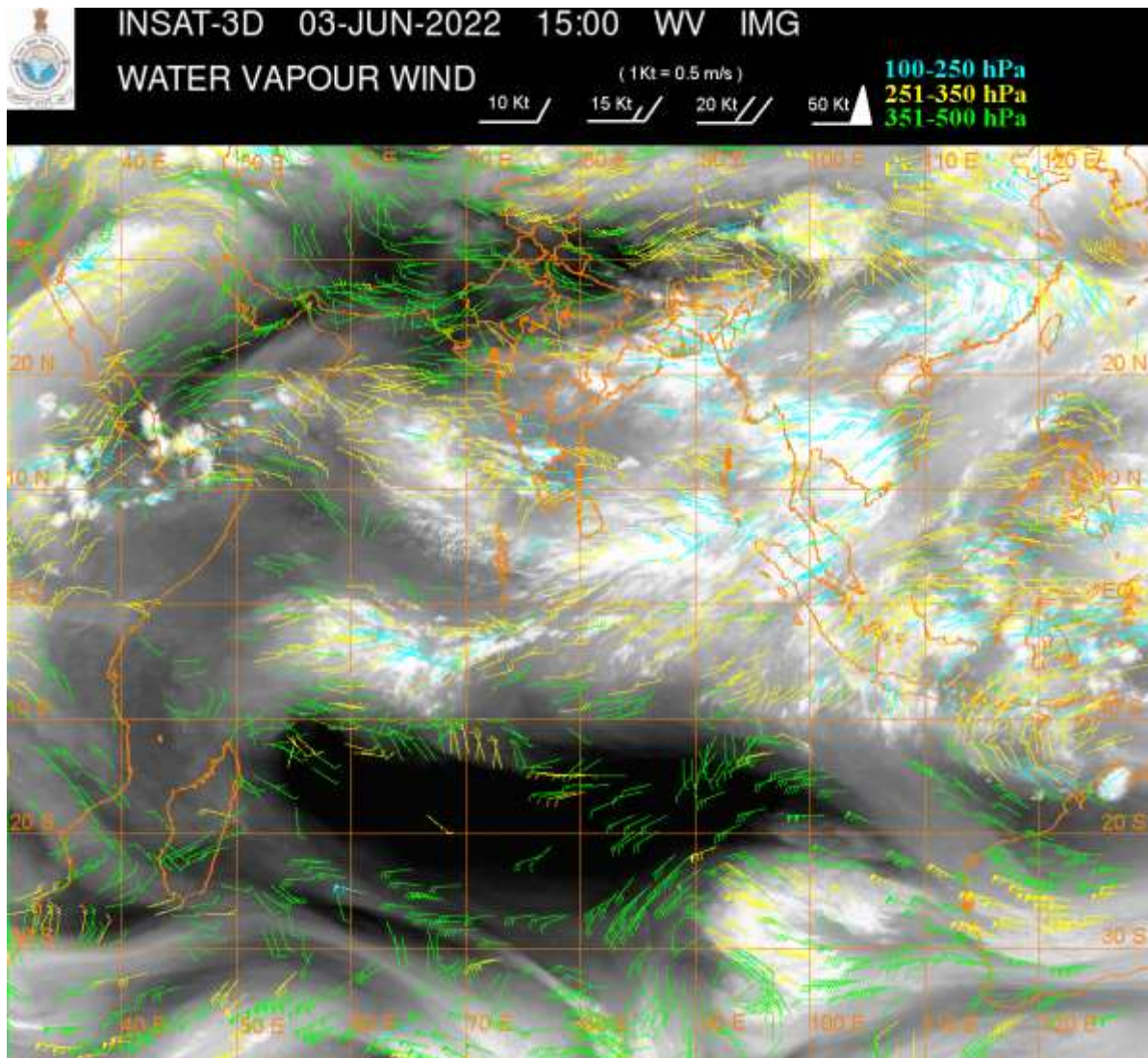
PRECIPITATION NOWCASTING:-

(BASED ON SCOPE NOWCASTING TOOL AT 1500 UTC AT A LEAD TIME OF 03 HRS (MM/HR):-

RAINFALL UP TO 12-20 MM LIKELY OVER N SHWB MIZO S CHTGH ADJ SW ORS SIK (.)

**RAINFALL UP TO 5-12 MM LIKELY OVER E ARUPR MANI S SHWB N GWB NE JHRKND E ORS
GOA ADJ COTL KRNTK S KER C TN (.)**

**RAINFALL UPTO 0.5-5 MM LIKELY OVER E ASSAM NAGA TRP SE VID N KER LKSDP ILS AREA
NICOBAR ILS (.)**



CLOUDS DESCRIPTION WITHIN INDIA:-

NORTH:-

**SCT LOW/MED CLOUDS WITH EMBDD WK TO MOD CONVTN OVER LADAKH J&K N HP N
UTRKND S UP (.) ISOL TO SCT LOW/MED CLOUDS OVER S HP S UTRKND PJB WC & SE HARY
NE UP (.)**

EAST:-

**SCT TO BKN LOW/MED CLOUDS WITH EMBDD INT TO V INT CONVTN OVER EXT NW BHR S
CHTGH SW ORS S SKM N SHWB ASSAM ADJ NAGA MANI MIZO & BD (.) SCT LOW/MED
CLOUDS WITH EMBDD MOD TO INT CONVTN OVER EXT NE BHR S & NE JHRKND REST ORS S
SHWB NE GWB REST NE STATES (.) SCT LOW/MED CLOUDS WITH EMBDD WK TO MOD
CONVTN OVER REST JHRKND N CHTGH REST GWB N SKM (.) SCT LOW/MED CLOUDS OVER
REST BHR (.)**

WEST:-

**SCT LOW/MED CLOUDS WITH EMBDD WK TO MOD CONVTN OVER N RAJ MP MAHA GOA (.)
SCT LOW/MED CLOUDS OVER S RAJ GUJ (.)**

SOUTH:-

**SCT TO BKN LOW/MED CLOUDS WITH EMBDD INTTO V INT CONVTN OVER SIK N COTL AP N
COTL KER WC TN (.) SCT TO BKN LOW/MED CLOUDS WITH EMBDD MOD TO INT CONVTN
OVER S RYLSM REST KER (.) SCT LOW/MED CLOUDS WITH EMBDD WK TO MOD CONVTN
OVER REST KRNTK TLNGN N RYLSM REST TN LKSDP ILS NICOBAR ILS (.) SCT LOW/MED
CLOUDS OVER S COTL AP ANDAMAN ILS (.)**

ARABIAN SEA:-

SCT LOW/MED CLOUDS WITH EMBDD INT TO V INT CONVTN OVER EC AND SE ARSEA (.) SCT LOW/MED CLOUDS WITH EMBDD WK TO MOD CONVTN OVER WC & SW ARSEA AND COMORIN AREA (.)

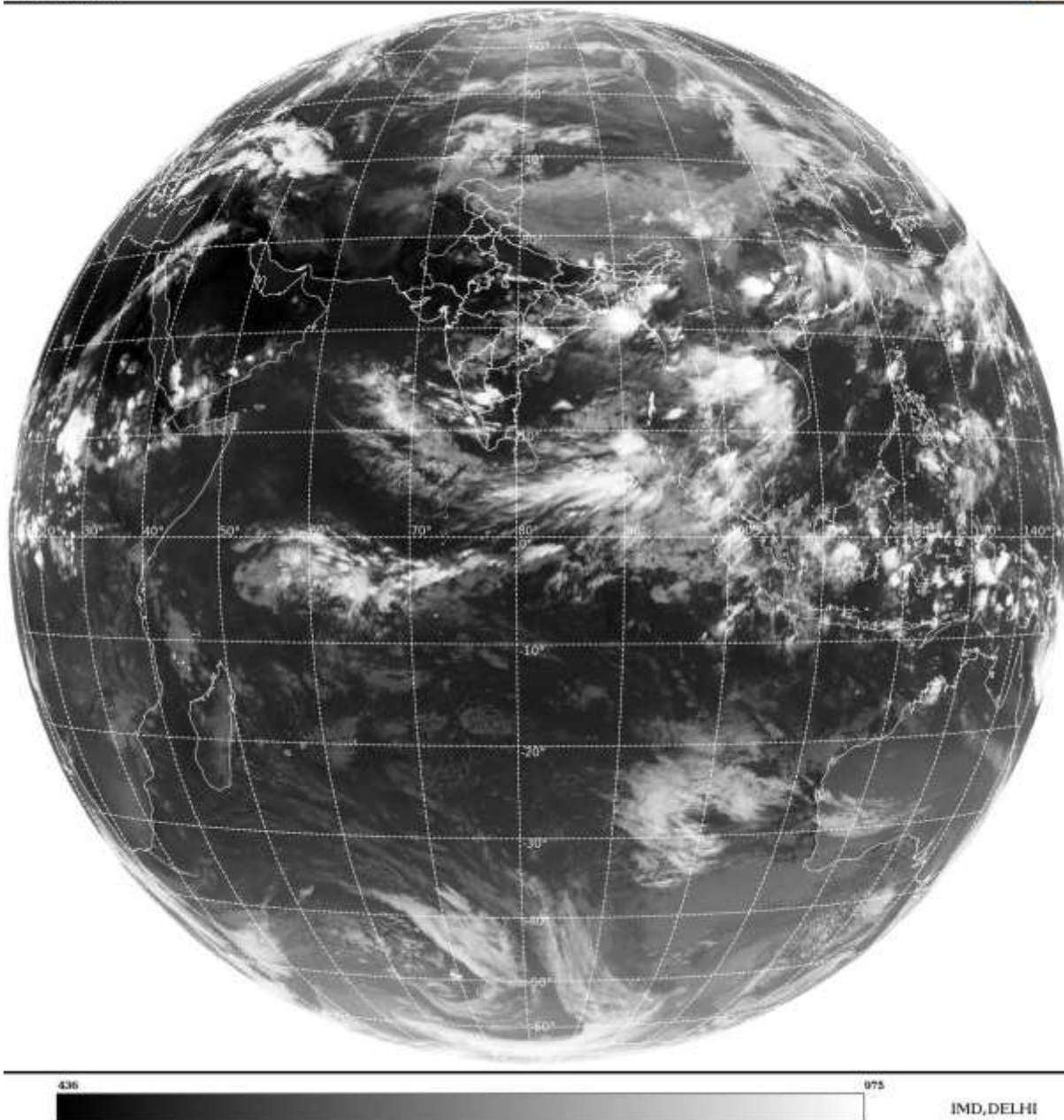
BAY OF BENGAL & ANDAMAN SEA:-

SCT TO BKN LOW/MED CLOUDS WITH EMBDD INT TO V INT CONVTN OVER NORTH & SOUTH BAY AND N ANDAMAN SEA (.) SCT LOW/MED CLOUDS WITH EMBDD WK TO MOD CONVTN OVER CENTRAL BAY AND S ANDAMAN SEA (.)

CLOUDS DESCRIPTION OUTSIDE INDIA:-

SAT : INSAT-3D IMG
Thermal InfraredI Count 10.8 um
L1B FULL DISK

03-06-2022/(1500 to 1526) GMT
03-06-2022/(2030 to 2056) IST



SCT LOW/MED CLOUDS WITH EMBDD MOD TO INT CONVTN OVER S SRI LANKA MALDIVES NEPAL BHUTAN TIBET CHINA YELLOW SEA E CHINA SEA TAIWAN MYANMAR THAILAND GULF OF THAILAND CAMBODIA LAOS VIETNAM GULF OF TONKIN HAINAN SUMATRA STR OF MALACCA MALAYSIA BORNEO SOUTH CHINA SEA JAVA ILS & SEA CELEBES ILS & SE PHILIPPINES SULU SEA AND OVER INDIAN OCEAN BET LAT 5.0N TO 10.0S LONG 52.0E TO 110.0E (.)

TOO 03/2140 HRS IST=

NNNN

LEGEND:-

REGION	NORTH	J&K HP PJB HARY DLH UP UTRKND
	EAST	BHR JHRKND CHTGH OR WB SKM NORTH- EAST STATES
	WEST	RAJ MP GUJ MAHA GOA
	SOUTH	TLNGN AP KRNTK KER TN LKSDP ANDAMAN & NICOBAR ILS

CLOUD DISTRIBUTION	ISOL	ISOLATED (LESS THAN 25%)
	SCT	SCATTERED (25 TO 50%)
	BKN	BROKEN (51 TO 75%)
	SLD	SOLID (GREATER THAN 75%)
CLOUDS TOP TEMPERATURE	CTT	CLOUD TOP TEMPERATURE
CONVECTION	WK CONVTN	WEAK CONVECTION (CTT GREATER THAN -25°C)
	MOD CONVTN	MODERATE CONVECTION (CTT BETWEEN -25°C TO -40°C)
	INT CONVTN	INTENSE CONVECTION (CTT BETWEEN -41°C TO -70°C)
	V INT CONVTN	VERY INTENSE CONVECTION (CTT LESS THAN -70°C)
METEOROLOGICAL SUB-DIVISIONS, STATES & UNION TERRITORIES	ARUPR	ARUNACHAL PRADESH
	BHR	BIHAR
	CHTGH	CHHATTISGARH
	COTL AP	COASTAL ANDHRA PRADESH
	COTL KRNTK	COASTAL KARNATAKA
	COTL ORS	COASTAL ORISSA
	GUJ	GUJARAT
	GWB	GANGETIC WEST BENGAL
	HARY	HARYANA
	DLH	DELHI
	HP	HIMACHAL PRADESH
	J&K	JAMMU AND KASHMIR
	JHRKND	JHARKHAND
	KER	KERALA
	KKN	KONKAN
	LKSDP	LAKSHADWEEP
	M MAHA	MADHYA MAHARASHTRA
	MAHA	MAHARASHTRA
	MANI	MANIPUR
	MEGHA	MEGHALAYA
MIZO	MIZORAM	
MP	MADHYA PRADESH	
	MRTHWD	MARATHWADA

	NAGA	NAGALAND
	N COTL AP	NORTH COASTAL ANDHRA PRADESH
	NIK	NORTH INTERIOR KARNATAKA
	ORS	ORISSA
	PJB	PUNJAB
	RAJ	RAJASTHAN
	RYLSM	RAYALASEEMA
	SAU & KUTCH	SAURASHTRA & KUTCH
	SHWB	SUB-HIMALAYAN WEST BENGAL
	SIK	SOUTH INTERIOR KARNATAKA
	SKM	SIKKIM
	TLNGN	TELANGANA
	TN	TAMIL NADU
	TRP	TRIPURA
	UP	UTTAR PRADESH
	UTRKN D	UTTARAKHAND
	VID	VIDHARBHA
	SHWB	SUB HIMALAYAN WEST BENGAL
	GWB	GANGETIC WEST BENGAL
	ARSEA	ARABIAN SEA
	ILS	ISLANDS
MISCELLANEOUS	ASSW	IN ASSOCIATION WITH
	ASSTD	ASSOCIATED
	LLC	LOW LEVEL CIRCULATION
	EMBDD	EMBEDDED
	N/HOOD	NEIGHBOURHOOD
	EXT	EXTREME