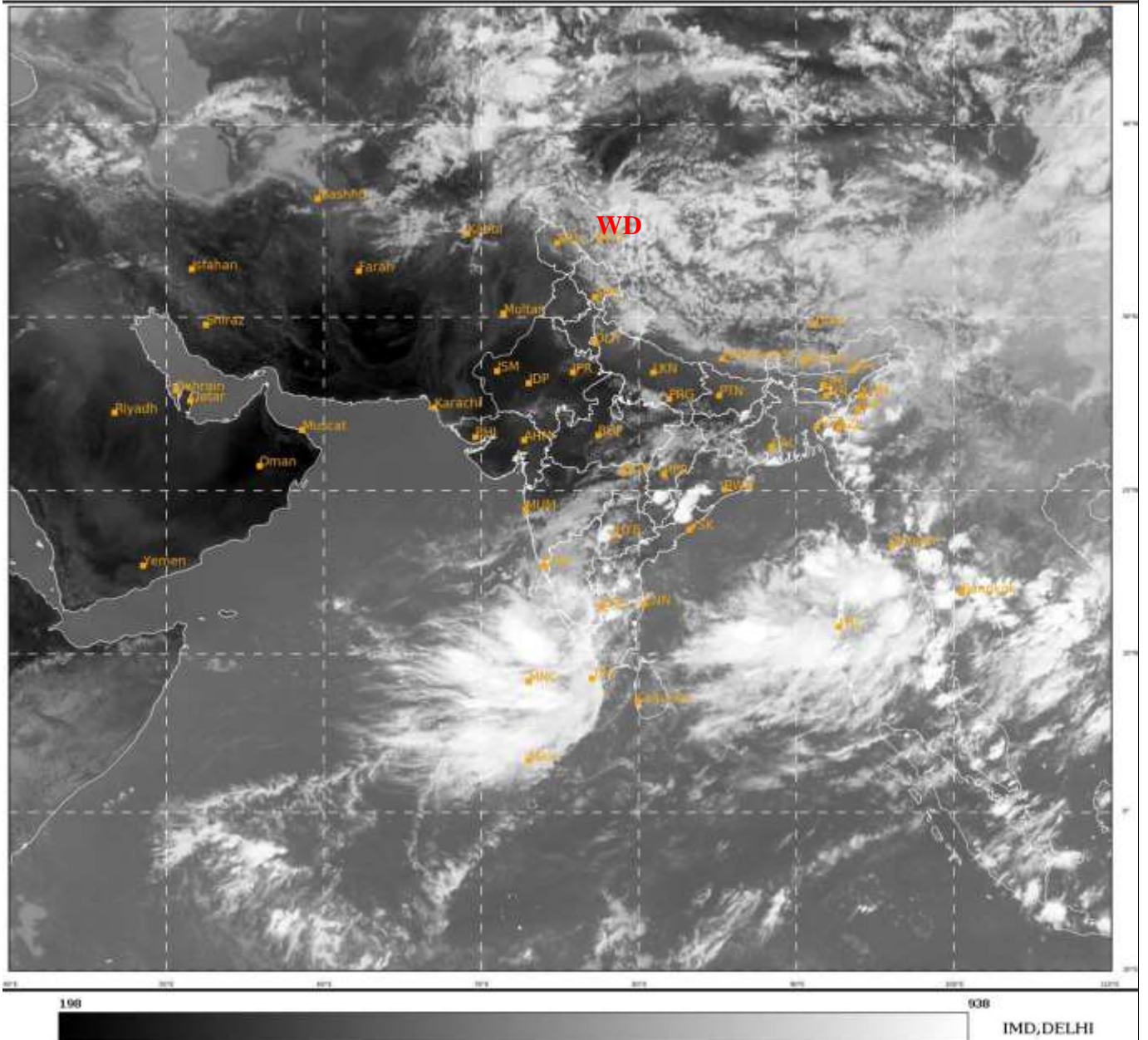




**SATELLITE BULLETIN BASED ON SATELLITE
IMAGERIES AND PRODUCTS**
18.05.2022 TIME 0900 UTC

SAT : INSAT-3D IMG
IMG_TIR1 10.8 um
LIC Mercator

18-05-2022/(0900 to 0926) GMT
18-05-2022/(1430 to 1456) IST



TCIN50 DEMS 180900

SATELLITE BULLETIN BASED ON INSAT-3D PIC OF 180900 UTC (.)

REGION COVERED BETWEEN LAT 50.0°N TO 30.0°S AND LONG 40.0°E TO 125.0°E (.)

SALIENT FEATURES:-

WESTERN DISTURBANCE (WD):-

SCT MULTILAYERED CLOUDS OVER E LADAKH HP UTRKND ADJ NW UP TIBET ADJ CHINA IN ASSW **WD** OVER THE AREA (.)

THUNDERSTORM / CONVECTIVE ACTIVITY:-

THUNDERSTORM / CONVECTIVE ACTIVITIES OBSERVED OVER NE STATES RYLSMA KRNTK KER W TN LKSDP ILS ANDAMAN & NICOBAR ILS (.)

CONVECTION OVER LAKSHADWEEP ILS AREA ADJ SE ARSEA:-

BKN INTENSE TO VERY INTENSE CONVECTION OVER LKSDP ILS AREA ADJ SE ARSEA PERSISTS (.) MINIMUM CTT MINUS **93** DEG C (.)

DUST:-

METEOSAT-8 RGB DUST PRODUCT AT 0900 UTC INDICATES DUST AT ISOLATED PLACES OVER N GUJ N RAJ (.)

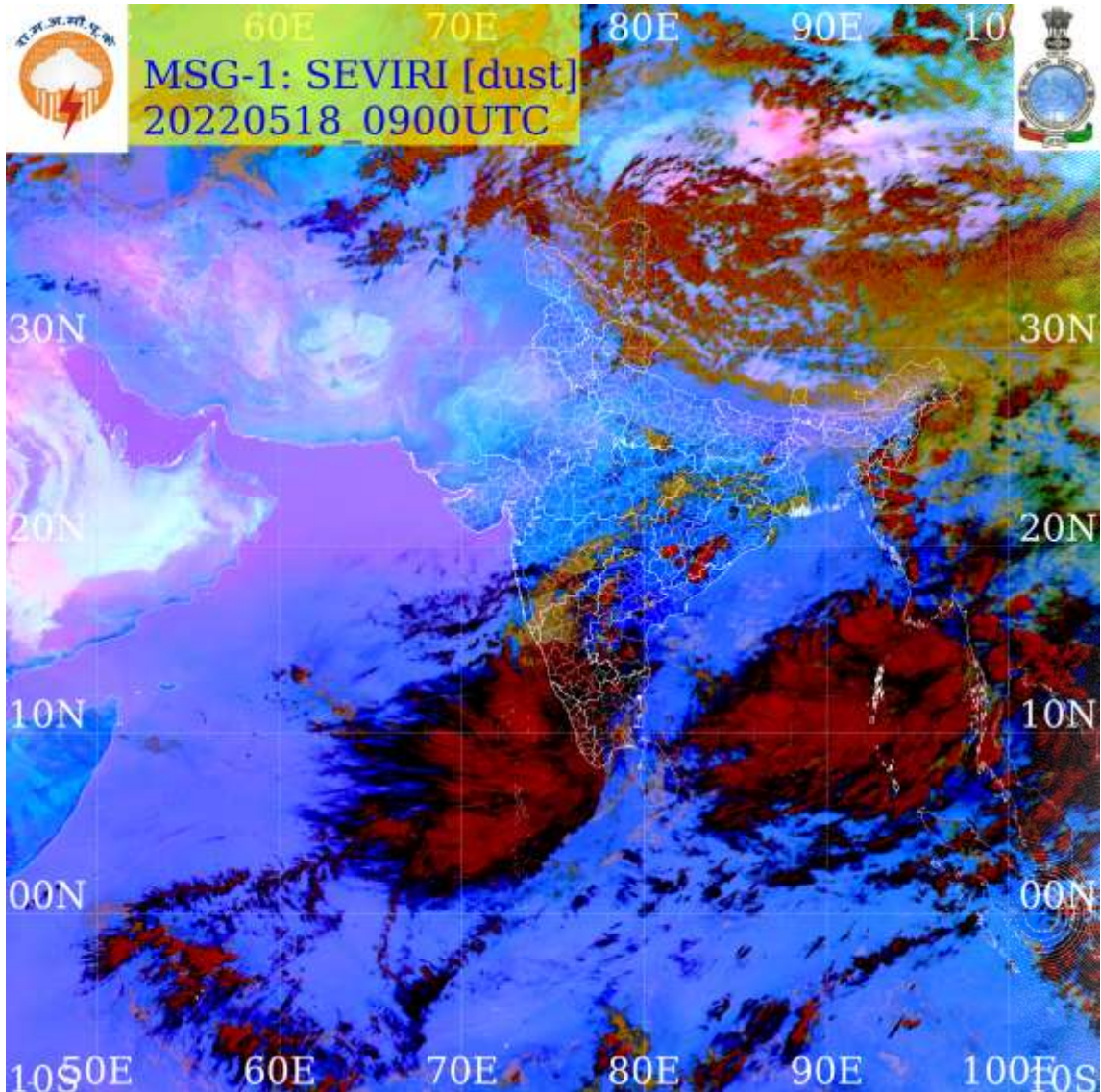
PRECIPITATION NOWCASTING:-

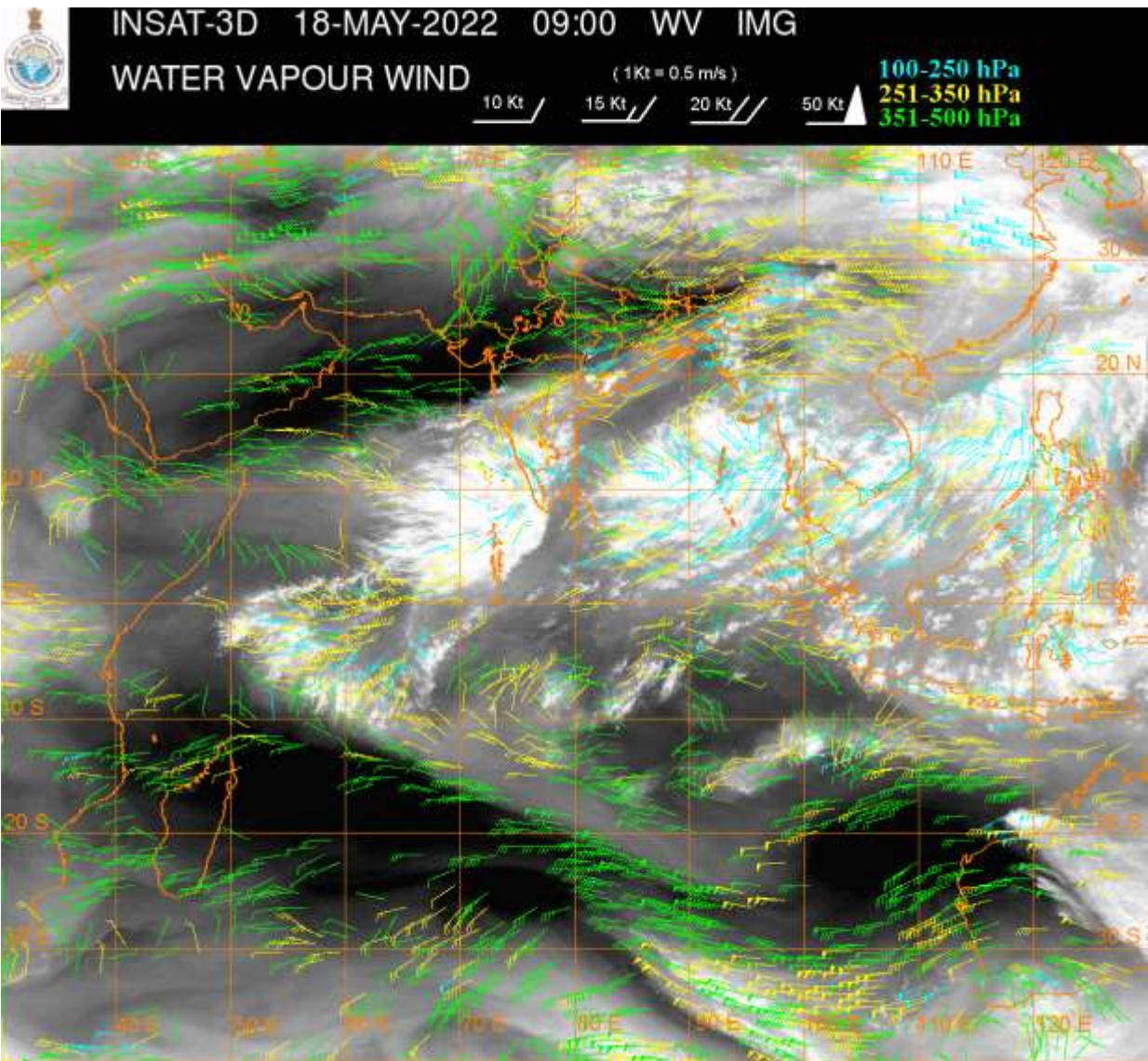
(BASED ON SCOPE NOWCASTING TOOL AT 0800 UTC AT A LEAD TIME OF 03 HRS (MM/HR):-

RAINFALL UPTO **10-20 MM** LIKELY OVER W SIK N KER LKSDP ILS (.)

RAINFALL UPTO **5-10 MM** LIKELY OVER NIK S KER MANI MIZO ANDAMAN & NICOBAR ILS (.)

RAINFALL UPTO **0.5-5 MM** LIKELY OVER SOUTH MADHYA MAHA S MRTHWD REST NE STATES TLNGN RYLSM REST KRNTK N TN (.)





CLOUDS DESCRIPTION WITHIN INDIA:-

NORTH:-

SCT LOW/MED CLOUDS WITH EMBDD MOD TO INT CONVTN OVER E LADAKH (.) SCT LOW/MED CLOUDS WITH EMBDD ISOL WK TO MOD CONVTN OVER REST LADAKH J&K HP UTRKND W & S UP (.) SCT LOW/MED CLOUDS OVER SE PJB HARY DLH (.)

EAST:-

SCT LOW/MED CLOUDS WITH EMBDD MOD TO INT CONVTN OVER S CHTGH S ORS NE JHRKND ADJ SE BHR (.) SCT LOW/MED CLOUDS WITH EMBDD MOD TO INT CONVTN OVER E ARUPR SE ASSAM NAGA MANI MIZO TRP (.) SCT LOW/MED CLOUDS WITH EMBDD ISOL WK TO MOD CONVTN OVER CHTGH N ORS S JHRKND W GWB SKM (.) SCT LOW/MED CLOUDS OVER S ORS N JHRKND E GWB SHWB REST NE-STATES (.)

WEST:-

SCT LOW/MED CLOUDS WITH EMBDD MOD TO INT CONVTN OVER SOUTH M MAHA & WK TO MOD CONVTN OVER E MP S KKN MRTHWD VID GOA (.) SCT LOW/MED CLOUDS E RAJ W MP (.)

SOUTH:-

SCT TO BKN LOW/MED CLOUDS WITH EMBDD INT TO V INT CONVTN OVER LKSDP ILS ANDAMAN & NICOBAR ILS NW TLNGN SE RYLSM (MINIMUM CTT MINUS -93 DEG CEL) (.) SCT LOW/MED CLOUDS WITH EMBDD MOD TO INT CONVTN OVER REST RYLSM KRNTK KER W TN AND WK TO MOD CONVTN OVER REST TLNGN S COTL AP REST TN (.) SCT LOW/MED CLOUDS OVER N COTL AP (.)

ARABIAN SEA:-

SCT TO BKN LOW/MED CLOUDS WITH EMBDD INT TO V INT CONVTN OVER SE ARSEA LKSDP ILS AREA MALDIVES AREA (MINIMUM CTT MINUS 93 DEG CEL) (.) SCT LOW/MED CLOUDS WITH EMBDD MOD TO INT CONVTN OVER EC ARSEA OFF S MAHA-KRNTK COASTS (.)

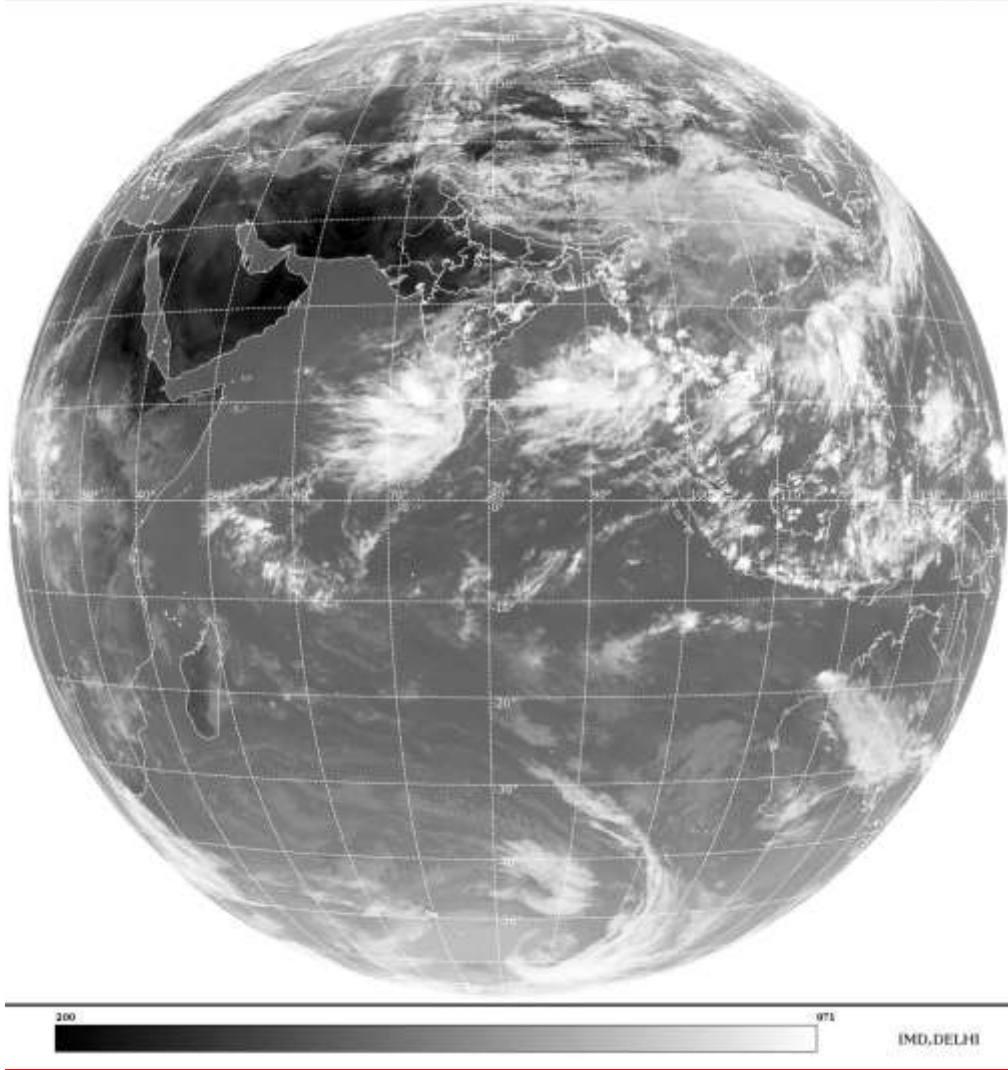
BAY OF BENGAL & ANDAMAN SEA:-

SCT TO BKN LOW/MED CLOUDS WITH EMBDD INT TO V INT CONVTN OVER SE BAY ANDAMAN SEA (MINIMUM CTT MINUS 93 DEG CEL) (.) SCT LOW/MED CLOUDS WITH EMBDD MOD TO INT CONVTN OVER SW BAY (.)

CLOUDS DESCRIPTION OUTSIDE INDIA:-

SAT : INSAT-3D IMG
Thermal Infrared1 Count 10.8 um
LIB FULL DISK

18-05-2022/(0900 to 0926) GMT
18-05-2022/(1430 to 1456) IST



SCT LOW/MED CLOUDS WITH EMBDD MOD TO INT CONVTN OVER MALDIVES TIBET CHINA MYANMAR THAILAND GULF OF THAILAND CAMBODIA S LAOS S VIETNAM N SUMATRA STR OF MALACCA MALAYSIA BORNEO SOUTH CHINA SEA JAVA SEA CELEBES ILS & SEA PHILIPPINES SULU SEA E CHINA SEA AND OVER INDIAN OCEAN BET LAT 5.0N TO 14.0S LONG 50.0E TO 110.0E (.)

TOO 18/1520 HRS IST=

NNNN

LEGEND:-

REGION	NORTH	J&K HP PJB HARY DLH UP UTRKND
	EAST	BHR JHRKND CHTGH OR WB SKM NORTH- EAST STATES
	WEST	RAJ MP GUJ MAHA GOA
	SOUTH	TLNGN AP KRNTK KER TN LKSDP ANDAMAN & NICOBAR ILS

CLOUD DISTRIBUTION	ISOL	ISOLATED (LESS THAN 25%)	
	SCT	SCATTERED (25 TO 50%)	
	BKN	BROKEN (51 TO 75%)	
	SLD	SOLID (GREATER THAN 75%)	
CLOUDS TOP TEMPERATURE	CTT	CLOUD TOP TEMPERATURE	
CONVECTION	WK CONVTN	WEAK CONVECTION (CTT GREATER THAN -25°C)	
	MOD CONVTN	MODERATE CONVECTION (CTT BETWEEN -25°C TO -40°C)	
	INT CONVTN	INTENSE CONVECTION (CTT BETWEEN -41°C TO -70°C)	
	V INT CONVTN	VERY INTENSE CONVECTION (CTT LESS THAN -70°C)	
METEOROLOGICAL SUB-DIVISIONS, STATES & UNION TERRITORIES	ARUPR	ARUNACHAL PRADESH	
	BHR	BIHAR	
	CHTGH	CHHATTISGARH	
	COTL AP	COASTAL ANDHRA PRADESH	
	COTL KRNTK	COASTAL KARNATAKA	
	COTL ORS	COASTAL ORISSA	
	GUJ	GUJARAT	
	GWB	GANGETIC WEST BENGAL	
	HARY	HARYANA	
	DLH	DELHI	
	HP	HIMACHAL PRADESH	
	J&K	JAMMU AND KASHMIR	
	JHRKND	JHARKHAND	
	KER	KERALA	
	KKN	KONKAN	
	LKSDP	LAKSHADWEEP	
	M MAHA	MADHYA MAHARASHTRA	
	MAHA	MAHARASHTRA	
	MANI	MANIPUR	
	MEGHA	MEGHALAYA	
	MIZO	MIZORAM	
	MP	MADHYA PRADESH	
		MRTHWD	MARATHWADA
		NAGA	NAGALAND
N COTL AP		NORTH COASTAL ANDHRA PRADESH	
NIK		NORTH INTERIOR KARNATAKA	
ORS		ORISSA	
PJB		PUNJAB	
RAJ		RAJASTHAN	
RYLSM		RAYALASEEMA	
SAU & KUTCH		SAURASHTRA & KUTCH	
SHWB		SUB-HIMALAYAN WEST BENGAL	
SIK		SOUTH INTERIOR KARNATAKA	
SKM		SIKKIM	

	TLNGN	TELANGANA
	TN	TAMIL NADU
	TRP	TRIPURA
	UP	UTTAR PRADESH
	UTRKND	UTTARAKHAND
	VID	VIDHARBHA
	SHWB	SUB HIMALAYAN WEST BENGAL
	GWB	GANGETIC WEST BENGAL
	ARSEA	ARABIAN SEA
	ILS	ISLANDS
MISCELLANEOUS	ASSW	IN ASSOCIATION WITH
	ASSTD	ASSOCIATED
	LLC	LOW LEVEL CIRCULATION
	EMBDD	EMBEDDED
	N/HOOD	NEIGHBOURHOOD
	EXT	EXTREME