



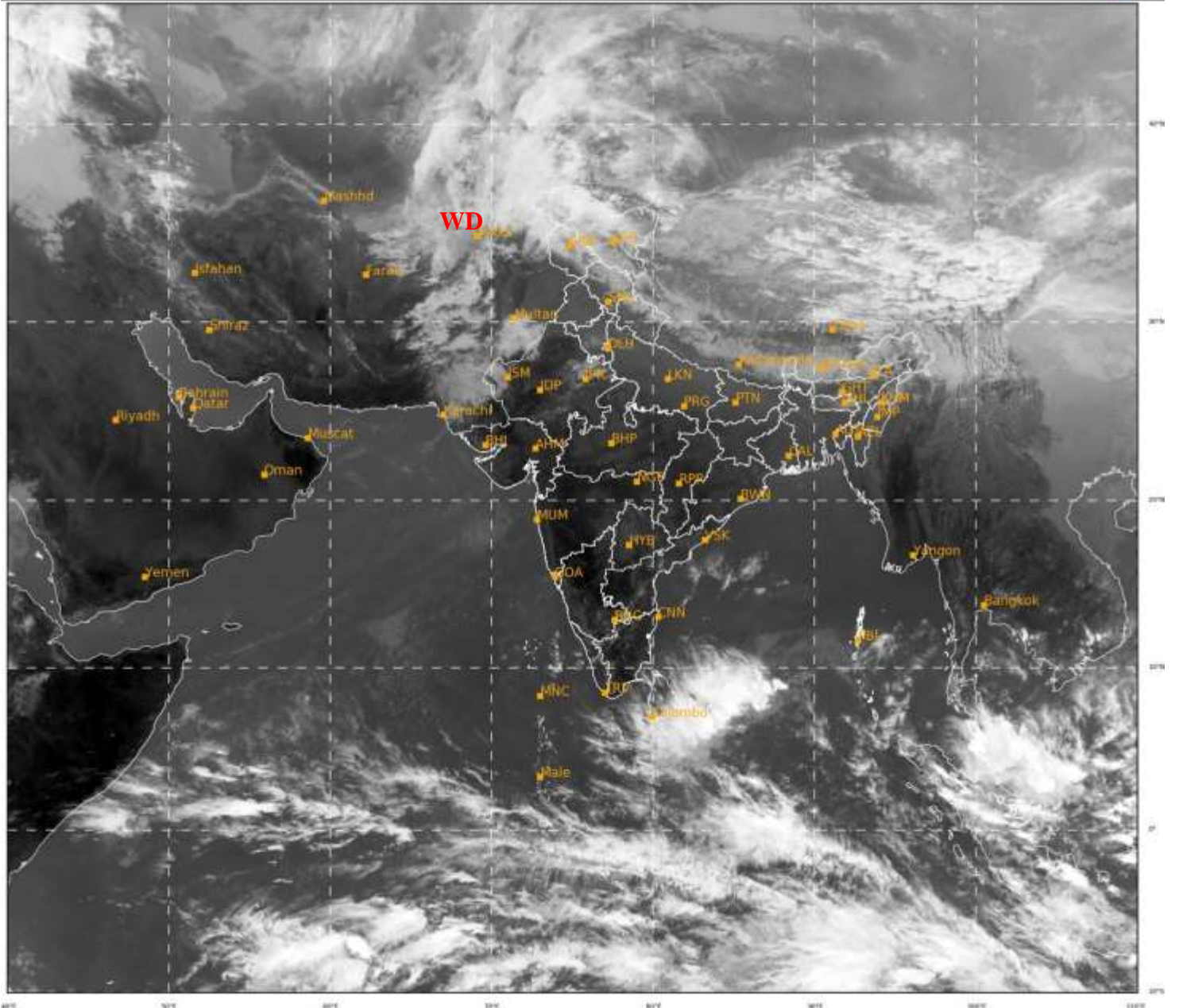
भारत मौसम विज्ञान विभाग
पृथ्वी विज्ञान मंत्रालय
India Meteorological Department
Ministry of Earth Sciences



**SATELLITE BULLETIN BASED ON SATELLITE
IMAGERIES AND PRODUCTS**
08.02.2022 TIME 0900 UTC

SAT : INSAT-3D IMG
IMG_TIR1 10.8 um
LIC Mercator

08-02-2022/(0900 to 0926) GMT
08-02-2022/(1430 to 1456) IST



369

940

IMD, DELHI

TCIN50 DEMS 080900

SATELLITE BULLETIN BASED ON INSAT-3D PIC OF 080900 UTC (.)

REGION COVERED BETWEEN LAT 50.0°N TO 30.0°S AND LONG 40.0°E TO 125.0°E (.)

SALIENT FEATURES:-

WESTERN DISTURBANCE (WD):-

SCT TO BKN MULTILAYERED CLOUDS OVER AFGAN TAJIKISTAN N PAK LADAKH J&K AND N/HOOD IN ASSW **WD** OVER THE AREA (.)



INSAT-3DR 08-FEB-2022 08:45 WV IMG

WATER VAPOUR WIND

(1Kt = 0.5 m/s)

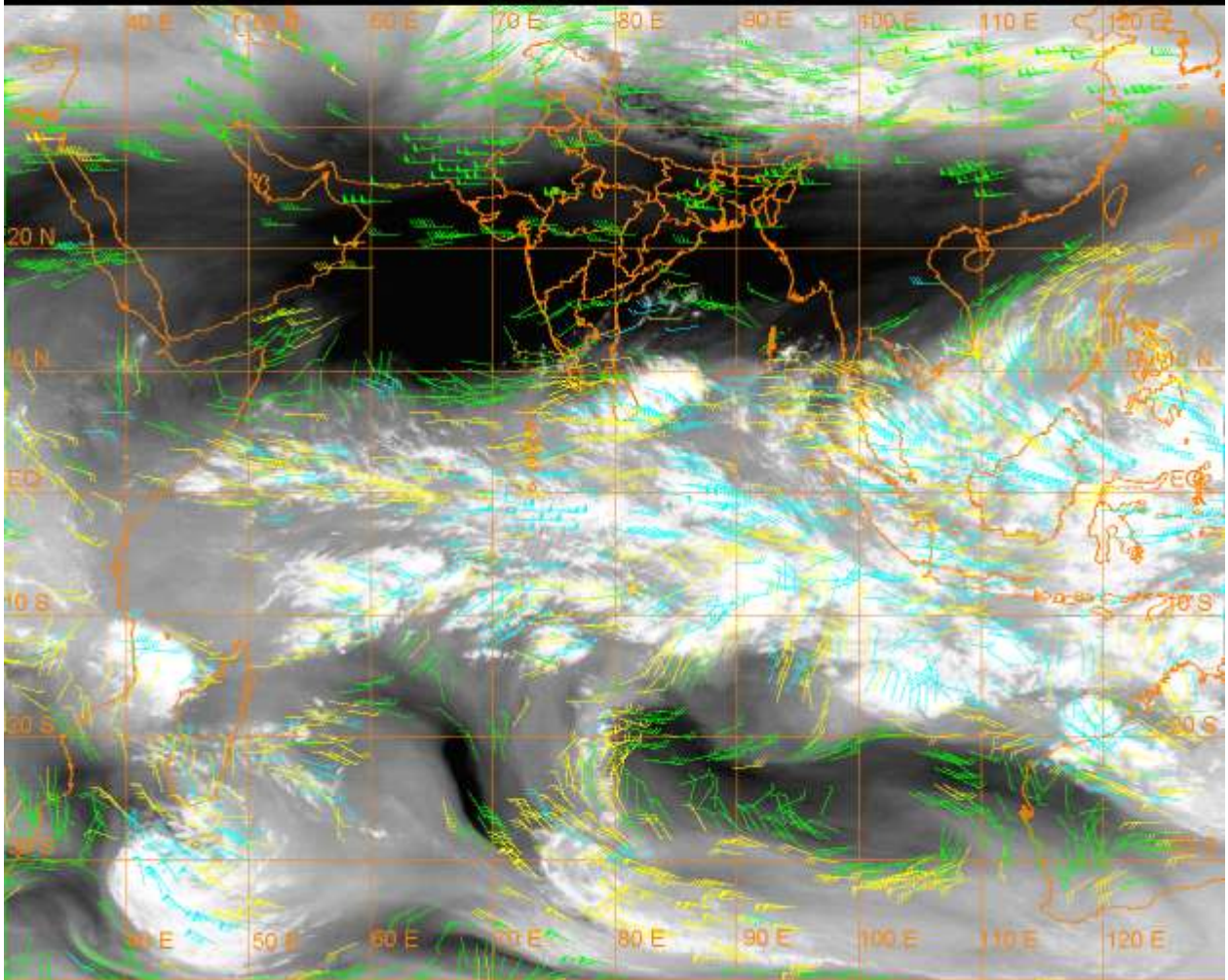
10 Kt

15 Kt

20 Kt

50 Kt

100-250 hPa
251-350 hPa
351-500 hPa



CLOUDS DESCRIPTION WITHIN INDIA:-

NORTH:-

SCT LOW/MED CLOUDS WITH EMBDD MOD TO INT CONVTN OVER NW LADAKH N J&K (.) SCT LOW/MED CLOUDS WITH EMBDD WK TO MOD CONVTN OVER REST LADAKH S J&K HP N UTRKND EXT S HARY EXT NW UP (.) SCT LOW/MED CLOUDS OVER S UTRKND N PJB REST S HARY DLH REST N UP (.)

EAST:-

SCT LOW/MED CLOUDS WITH EMBDD WK CONVTN OVER N SHWB SKM ARUPR ASSAM E MEGHA NAGA (.) SCT LOW/MED CLOUDS OVER N BHR EXT S CHTGH E ORS S GWB S SHWB REST NE STATES (.)

WEST:-

SCT LOW/MED CLOUDS WITH EMBDD WK CONVTN OVER RAJ (.) ISOL TO SCT LOW/MED CLOUDS OVER C MP W & NE GUJ MAHA (.)

SOUTH:-

SCT LOW/MED CLOUDS WITH EMBDD WK CONVTN OVER SE SIK S RYLSM N KER NW TN (.) SCT LOW/MED CLOUDS OVER KRNTK TLNGN N RYLSM COTL AP S KER REST TN LKSDP ANDAMAN & NICOBAR ILS (.)

ARABIAN SEA:-

SCT LOW/MED CLOUDS WITH EMBDD MOD TO INT CONVTN OVER SE ARSEA OFF KER COAST AND COMORIN (.) SCT LOW/MED CLOUDS OVER REST ARSEA (.)

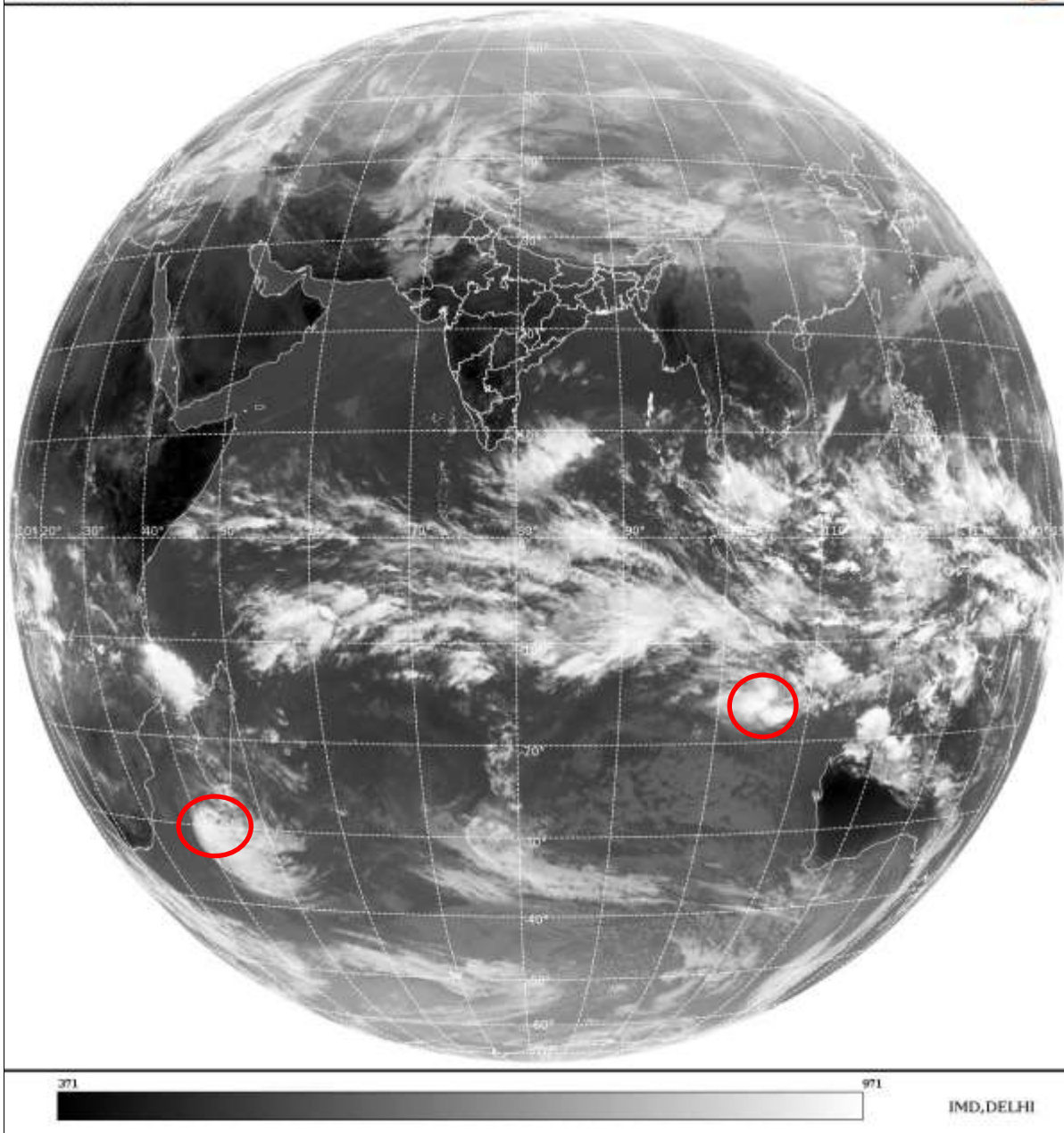
BAY OF BENGAL & ANDAMAN SEA:-

SCT LOW/MED CLOUDS WITH EMBDD INT TO V INT CONVTN OVER SW ADJ SE BAY (.) SCT LOW/MED CLOUDS WITH EMBDD MOD TO INT CONVTN OVER ANDAMAN SEA AND WK TO MOD CONVTN OVER REST SOUTH BAY (.)

CLOUDS DESCRIPTION OUTSIDE INDIA:-

SAT : INSAT-3D IMG
Thermal Infrared1 Count 10.8 um
LIB FULL DISK

08-02-2022/(0900 to 0926) GMT
08-02-2022/(1430 to 1456) IST



VORTEX (BATSIRAI) OVER SOUTH INDIAN OCEAN:-

VORTEX (**BATSIRAI**) OVER SOUTH INDIAN OCEAN CENTERED NEAR **27.7S / 42.1E** (.) INTENSITY **T1.5/2.0** (.) ASSTD SCT TO BKN LOW/MED CLOUDS WITH EMBDD INT TO V INT CONVTN OVER AREA BET LAT 26.0S TO 37.0S AND LONG 38.0E TO 48.0E (.)

ANOTHER VORTEX OVER SOUTH INDIAN OCEAN:-

ANOTHER VORTEX OVER SOUTH INDIAN OCEAN CENTERED NEAR **16.0S / 105.2E** (.) INTENSITY **T2.0/2.0** (.) ASSTD BKN LOW/MED CLOUDS WITH EMBDD MOD TO INT CONVTN OVER AREA BET LAT 13.0S TO 18.0S AND LONG 100.0E TO 108.0E (.)

SCT LOW/MED CLOUDS WITH EMBDD MOD TO INT CONVTN OVER SRI LANKA PAK TIBET CHINA YELLOW SEA S CAMBODIA S VIETNAM GULF OF THAILAND SUMATRA STR OF MALACCA MALASIYA BORNEO SOUTH CHINA SEA JAVA ILS & SEA CELEBES ILS & SEA PHILIPPINES SULU SEA MADAGASCAR MOZAMBIQUE CHANNEL AND OVER INDIAN OCEAN BET LAT 5.0N TO 20.0S EAST OF LONG 50.0E (.)

TOO 08/1540 HRS IST=

NNNN

LEGEND:-

REGION	NORTH	J&K HP PJB HARY DLH UP UTRKND
	EAST	BHR JHRKND CHTGH ORS WB SKM NORTH- EAST STATES
	WEST	RAJ MP GUJ MAHA GOA
	SOUTH	TLNGN AP KRNTK KER TN LKSDP ANDAMAN & NICOBAR ILS

CLOUD DISTRIBUTION	ISOL	ISOLATED (LESS THAN 25%)
	SCT	SCATTERED (25 TO 50%)
	BKN	BROKEN (51 TO 75%)
	SLD	SOLID (GREATER THAN 75%)
CLOUDS TOP TEMPERATURE	CTT	CLOUD TOP TEMPERATURE
CONVECTION	WK CONVTN	WEAK CONVECTION (CTT GREATER THAN -25°C)
	MOD CONVTN	MODERATE CONVECTION (CTT BETWEEN -25°C TO -40°C)
	INT CONVTN	INTENSE CONVECTION (CTT BETWEEN -41°C TO -70°C)
	V INT CONVTN	VERY INTENSE CONVECTION (CTT LESS THAN -70°C)
METEOROLOGICAL SUB-DIVISIONS, STATES & UNION TERRITORIES	ARUPR	ARUNACHAL PRADESH
	BHR	BIHAR
	CHTGH	CHHATTISGARH
	COTL AP	COASTAL ANDHRA PRADESH
	COTL KRNTK	COASTAL KARNATAKA
	COTL ORS	COASTAL ORISSA
	GUJ	GUJARAT
	GWB	GANGETIC WEST BENGAL
	HARY	HARYANA
	DLH	DELHI
	HP	HIMACHAL PRADESH
	J&K	JAMMU AND KASHMIR
	JHRKND	JHARKHAND
	KER	KERALA
	KKN	KONKAN
	LKSDP	LAKSHADWEEP
	M MAHA	MADHYA MAHARASHTRA
	MAHA	MAHARASHTRA
	MANI	MANIPUR
	MEGHA	MEGHALAYA
	MIZO	MIZORAM
	MP	MADHYA PRADESH
	MRTHWD	MARATHWADA
	NAGA	NAGALAND

	N COTL AP	NORTH COASTAL ANDHRA PRADESH
	NIK	NORTH INTERIOR KARNATAKA
	ORS	ORISSA
	PJB	PUNJAB
	RAJ	RAJASTHAN
	RYLSM	RAYALASEEMA
	SAU & KUTCH	SAURASHTRA & KUTCH
	SHWB	SUB-HIMALAYAN WEST BENGAL
	SIK	SOUTH INTERIOR KARNATAKA
	SKM	SIKKIM
	TLNGN	TELANGANA
	TN	TAMIL NADU
	TRP	TRIPURA
	UP	UTTAR PRADESH
	UTRKN	UTTARAKHAND
	VID	VIDHARBHA
	SHWB	SUB HIMALAYAN WEST BENGAL
	GWB	GANGETIC WEST BENGAL
	ARSEA	ARABIAN SEA
	ILS	ISLANDS
MISCELLANEOUS	ASSW	IN ASSOCIATION WITH
	ASSTD	ASSOCIATED
	LLC	LOW LEVEL CIRCULATION
	EMBDD	EMBEDDED
	N/HOOD	NEIGHBOURHOOD
	EXT	EXTREME