



**Ministry of Earth Sciences  
India Meteorological Department  
Cyclone Warning Division, New Delhi**

**Tropical Cyclone Forecast Programme  
Report Dated 18<sup>th</sup> November 2025**

**Time of Issue: 1300 UTC**

**Synoptic features (based on 0900 UTC analysis):**

- Yesterday's Low-Pressure area over southwest Bay of Bengal and adjoining Sri Lanka lay over Comorian area and neighborhood at 0900 UTC of today, the 18th November 2025. It is likely to move slowly west-northwestwards during next 24 hours.
- A low Pressure area is likely to form over Southeast Bay of Bengal around 22<sup>nd</sup> November 2025. Thereafter, it is very likely to move west-northwestwards and become more marked during subsequent 48 hours.

**Environmental Features based on 0900 UTC:**

Parameter	Bay of Bengal (BoB)	Arabian Sea (AS)
<b>Sea Surface Temperature (SST) °C</b>	Around 29 - 30°C over entire BoB.	Around 28-29°C over eastern Arabian Sea. Around 27°C over rest Arabian Sea.
<b>Tropical Cyclone Heat Potential (TCHP) kJ/cm<sup>2</sup></b>	<ul style="list-style-type: none"> <li>➤ 150-175 over south south Andaman Sea and southeast BoB.</li> <li>➤ 100-120 over eastcentral, adjoining northeast BoB and over north Andaman Sea.</li> </ul>	120-130 over southeast Arabian Sea.
<b>Cyclonic Relative - vorticity (X10<sup>-6</sup>s<sup>-1</sup>)</b>	<ul style="list-style-type: none"> <li>➤ 30-40 over southwest BoB &amp; adjoining south Sri Lanka coast.</li> <li>➤ 40-50 over Comorin area and neighborhood, and extending upto 500hPa.</li> <li>➤ 30-40 over southeast BoB &amp; adjoining south Andaman Sea and extending upto 700 hPa.</li> </ul>	<ul style="list-style-type: none"> <li>➤ 30-40 over southeast Arabian Sea.</li> </ul>
<b>Low-Level convergence (X10<sup>-6</sup> s<sup>-1</sup>)</b>	<ul style="list-style-type: none"> <li>➤ 10 over Sri Lanka and adjoining Comorin area.</li> <li>➤ 05 over westcentral Bay of Bengal.</li> </ul>	<ul style="list-style-type: none"> <li>➤ 5 over southeast Arabian Sea along &amp; off Kerala coast.</li> </ul>
<b>Upper-Level divergence (X10<sup>-6</sup> s<sup>-1</sup>)</b>	<ul style="list-style-type: none"> <li>➤ 10-20 over Sri Lanka and adjoining Comorin area.</li> </ul>	No significant zone
<b>Vertical Wind Shear (VWS knots) Low: 05-10 knots Moderate: 10-20 knots</b>	<ul style="list-style-type: none"> <li>➤ Deep layer vertical wind shear is Low over south BoB and high over north and adjoining central BoB. Low to moderate over</li> </ul>	<ul style="list-style-type: none"> <li>➤ Deep layer vertical wind shear is Low - Moderate over southeast, eastcentral Arabian Sea, Lakshadweep islands &amp; Comorin area and high over rest</li> </ul>

<b>High: &gt;20 knots</b>	Comorin area, neighborhood. ➤ Mid layer vertical wind shear is Low over south BoB, Comorin area & neighborhood.	of Arabian Sea. ➤ Mid layer vertical wind shear is high over northwest and western parts of southwest AS over Low-Moderate over entire Arabian Sea and it is cyclonic.
<b>Wind Shear Tendency (knots)</b>	Increasing over southwest, eastcentral and northeast BoB and northern parts of Andaman Sea.	Decreasing over Comorin Area, Sri Lanka and Kerala Coast.
<b>Upper tropospheric Ridge</b>	Ridge is running along 12°N at 88°E.	A ridge is running along 11°N at 62°E.
<b>GPP</b>	Not available	Not available

### **M.J.O. Index:**

Madden Julian Oscillation (MJO) index is presently in phase 6 with amplitude greater than 1 in the phase diagram. It will be in the same phase during next seven days. MJO is not likely to support convective activity over the North Indian Ocean region.

### **Equatorial waves guidance:**

The tropical monitoring guidance from the NCICS indicates westerly wind anomaly (3-5 mps) over the southern parts of the North Indian Ocean (NIO), including the south Arabian Sea (AS) and south Bay of Bengal (BoB) adjacent to the North Equatorial Indian Ocean (NEIO) during next seven days. A comparatively weaker westerly wind anomaly is likely to prevail over the central parts of AS, southern peninsular India and the central parts of BoB till 18<sup>th</sup>. The easterly wind anomaly (1-3 mps) is likely over the northern parts of AS and BoB till 20<sup>th</sup> November. The easterly wind anomaly is likely to appear gradually over central BoB and adjacent parts of south BoB, whereas the westerly wind anomaly strengthened (5-7 mps) over south & central AS and the southern part of BoB adjacent to NEIO during the 18<sup>th</sup> to 20<sup>th</sup> November. The Equatorial Rossby Wave (ERW) is likely to be moving westwards across peninsular India and then central AS till 18<sup>th</sup>. During 18<sup>th</sup> to 20<sup>th</sup>, another spell of ERW is likely to propagate across the south BoB and adjoining NEIO. Thus, equatorial waves are likely to support the cyclonic circulation over southwest BoB to maintain its intensity or become a low till 18<sup>th</sup> November. During 18<sup>th</sup> to 20<sup>th</sup>, conditions are favourable for development of a cyclonic circulation over south Andaman Sea.

Regional dynamical features are supporting the existing low-pressure area over Comorin area and neighbourhood to persist during next 24 hours. With the expected west-northwestward movement, it will interact with land surface and also experience increasing wind shear. Hence it is not likely to intensify further. Considering low level vorticity, it is oriented from east-southeast to west-northwest towards Sri Lanka coast at 850 hPa level. The relative vorticity is increasing with height and extends upto 500 hPa level, maximum at this level. The lower level convergence is remains same and lie over Sri Lanka and neighborhood during past 24 hours, and upper level divergence also remains same and more than lower level convergence during past 24 hr.

Favorable features like low to moderate wind shear, positive vorticity up to mid-tropospheric level, positive low level convergence, upper level divergence and favorable equatorial waves are supporting the system to maintain its intensity during next 24 hours.

### **Over the Bay of Bengal & Andaman Sea:**

As per INSAT 3DS at 0900 UTC, scattered to broken low and medium clouds with embedded intense convection over south Bay of Bengal adjoining Equatorial Indian Ocean & Andaman Sea. Scattered low and medium clouds with embedded moderate to intense convection lay over central Bay of Bengal & rest south Bay of Bengal.

The convective cloud mass in association with the LPA is over Comorin area & neighbourhood. Associated scattered to broken low and medium clouds with embedded intense convection over Kerala, Tamil Nadu, Lakshadweep islands area, Maldives area, Comorin area, Gulf of Mannar, Palk Strait, Sri Lanka (minimum CTT minus 60-80°C).

**Over the Arabian Sea:**

As per INSAT 3DS at 0900 UTC, scattered to broken low and medium clouds with embedded intense convection over southeast Arabian Sea, Lakshadweep islands area, Maldives & Comorin area. Scattered low and medium clouds with embedded isolated weak convection lay over west Arabian Sea.

**Outside India:**

As per INSAT 3DS at 0900 UTC, Scattered low and medium clouds with embedded moderate to intense convection over Sri Lanka, Palk Strait, Gulf of Mannar, Maldives area, Tibet, China, Yellow Sea, east china sea, Taiwan, Myanmar, Thailand, Gulf of Thailand, Cambodia, Laos, Vietnam, gulf of Tonkin, Hainan, Sumatra, Strait of Malacca, Malaysia, Borneo, south china sea, Java islands & sea, Celebes islands & sea, Philippines, Sulu sea, Madagascar, Mozambique channel and over Indian Ocean between latitude 5.0°N to 15.0°S and longitude 50.0°E to 120.0°E.

**NWP Guidance for FDP Cyclone:**

<b>MODEL GUIDANCE</b>	<b>Bay of Bengal (BoB)</b>	<b>Arabian Sea (AS)</b>
<b>IMD-GFS</b>	<ul style="list-style-type: none"> <li>➤ An upper air cyclonic circulation over Comorin area and neighborhood as of today. It will move nearly westwards.</li> <li>➤ Model is indicating a fresh upper air cyclonic circulation over southeast BoB &amp; adjoining south Andaman Sea on 21/00. It is indicated to move west-northwestwards and consolidate into an LPA over southeast BoB on 22/00 UTC, depression on 23 UTC. Model is indicating its further intensification while moving in same direction towards Tamil Nadu coast till 25/00 UTC. Thereafter, model is indicated to move northwestwards towards Andhra Pradesh coast while intensifying further.</li> </ul>	Model is indicating the upper air cyclonic circulation over Comorin area will emerge into southeast Arabian Sea on 19/00 UTC. It is indicated to move west-northwestwards till 24/00 UTC, and lessmarked thereafter gradually while moving west-southwestwards.
<b>IMD-GEFS</b>	Not available	Not available
<b>IMD-WRF</b>	Not available	Not available
<b>BFS</b>	<ul style="list-style-type: none"> <li>➤ An upper air cyclonic circulation over Comorin area and neighbourhood as of today. It will move nearly westwards.</li> <li>➤ Model is indicating a fresh upper air cyclonic circulation over southeast BoB &amp; adjoining south Andaman Sea on 21/00. It is indicated to move west-northwestwards and consolidate into an LPA over southeast BoB on 22/00 UTC, depression on 24 UTC. Model is indicating its further intensification while moving in northwestward towards Andhra Pradesh</li> </ul>	Model is indicating the upper air cyclonic circulation over Comorin area will emerge into southeast Arabian Sea on 19/00 UTC. It is indicated to move west-northwestwards and become LPA on 20/00 UTC over southeast & adjoining southwest Araabian Sea. Depression over southwest Arabian Sea on

	coast while intensifying further.	22/00 UTC. Thereafter, model is indicated to move in west-southwestwards while weakening till 26/00 UTC.
<b>NCMRWF-NCUM(G)</b>	No significant system is indicated during next 7 days.	An upper air cyclonic circulation over southeast Arabian Sea on 19/00 UTC, will move west-northwestwards slowly till 25/00 without intensification.
<b>NCMRWF-NCUM(R)</b>	Not available	Not available
<b>NEPS</b>	No significant system is indicated during next 7 days.	No significant system is indicated during next 7 days.
<b>ECMWF</b>	<ul style="list-style-type: none"> <li>➤ An upper air cyclonic circulation over Comorin area and neighborhood as of today. It will move nearly westwards till 19/00 UTC.</li> <li>➤ An upper air cyclonic circulation over southeast BoB on 20/00 UTC, to move west-northwestwards and become LPA over southeast &amp; adjoining southwest BoB on 21/00 UTC. Moving in the same direction till 26/00 UTC without intensification.</li> </ul>	No significant system is indicated during next 7 days.
<b>NCEP-GFS</b>	<ul style="list-style-type: none"> <li>➤ An upper air cyclonic circulation over southeast BoB on 20/00 UTC, to move west-northwestwards and become LPA over southeast BoB on 21/00 UTC, depression over southeast BoB on 23/06 UTC. It will continue to move in same direction towards Sri Lanka coast while intensifying further.</li> </ul>	No significant system is indicated during next 7 days.
<b>EC-AIFS</b>	<ul style="list-style-type: none"> <li>➤ An upper air cyclonic circulation over Comorin area and neighborhood as of today. It will move nearly westwards till 19/00 UTC.</li> <li>➤ Model is indicating an LPA over southwest BoB &amp; adjoining south Sri Lanka coast on 23/12 UTC. It will lay over the same region and become depression on 26/12 UTC.</li> </ul>	No significant system is indicated during next 7 days.

### Summary:

#### (a) Bay of Bengal:

Most of the numerical models are indicating an upper air cyclonic circulation over Comorin area and neighborhood as of today. It is indicated to move west-northwestwards slowly during next 24 hours. Further, the models are also indicating a fresh cyclonic circulation over Southeast Bay of Bengal & adjoining Andaman Sea around 20<sup>th</sup> November. However, there is large variation among various models w.r.t area of formation/ time of formation of

LPA/depression & their further intensification and movement. Thus, the BoB region is under continuous watch for any significant development around 24<sup>th</sup> November.

**(a) Arabian Sea**

Most of the models are indicating no significant system over the Arabian Sea during next 7 days. However, some models are indicating the remnant of existing LPA to emerge into southeast Arabian Sea around 19<sup>th</sup> November.

**Inference:**

Considering various large-scale environmental features, climatology and model guidance, it is inferred that

The Low-Pressure area over Comorin area is likely to move slowly west-northwestwards during the next 24 hours.

A fresh low-pressure area is likely to form over southeast Bay of Bengal around 22<sup>nd</sup> November. Thereafter, it is very likely to move west-northwestwards and become more marked during subsequent 48 hours.

**Probability of cyclogenesis (formation of depression and above intensity systems) over the Bay of Bengal during next 168 hours:**

24 HOURS	24-48 HOURS	48-72 HOURS	72-96 HOURS	96-120 HOURS	120-144 HOURS	144-168 HOURS
NIL	NIL	NIL	NIL	NIL	NIL	LOW

**Probability of cyclogenesis (formation of depression and above intensity systems) over the Arabian Sea during next 168 hours:**

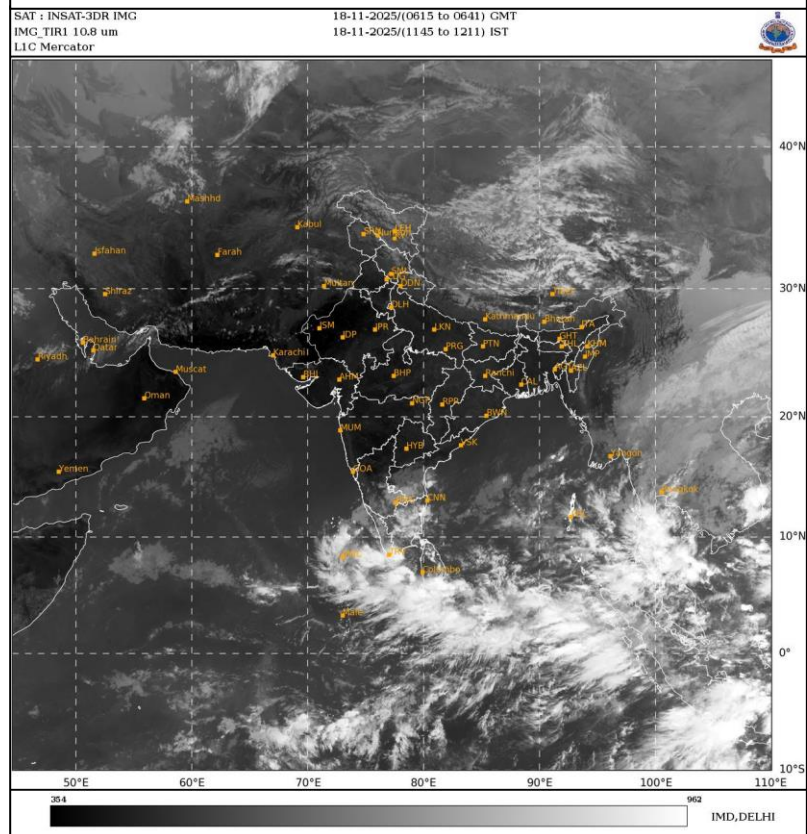
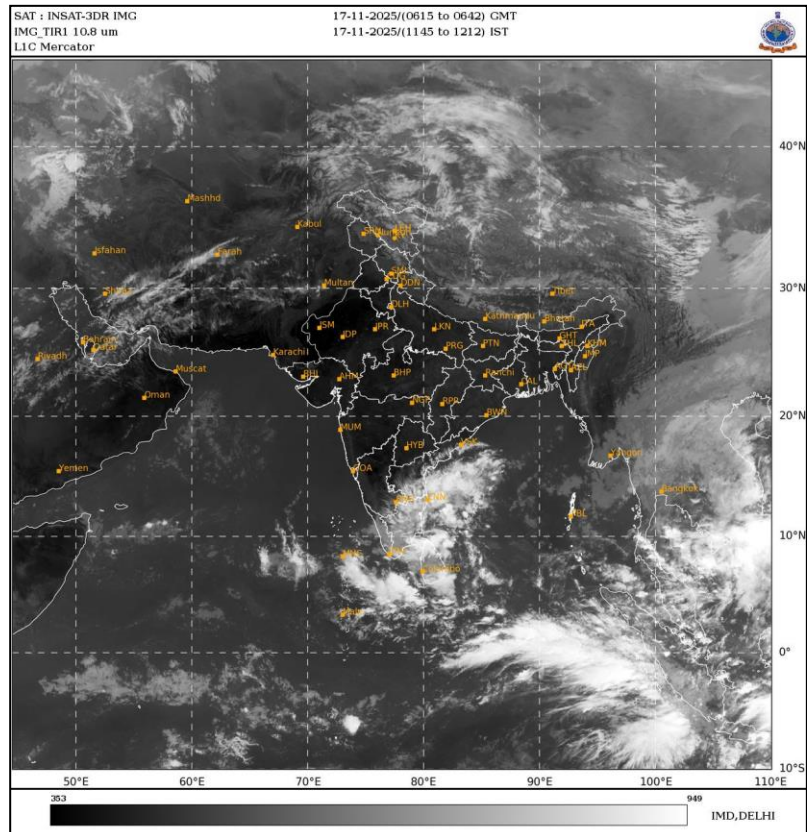
24 HOURS	24-48 HOURS	48-72 HOURS	72-96 HOURS	96-120 HOURS	120-144 HOURS	144-168 HOURS
NIL	NIL	NIL	NIL	NIL	NIL	NIL

“- “indicates genesis has already occurred.

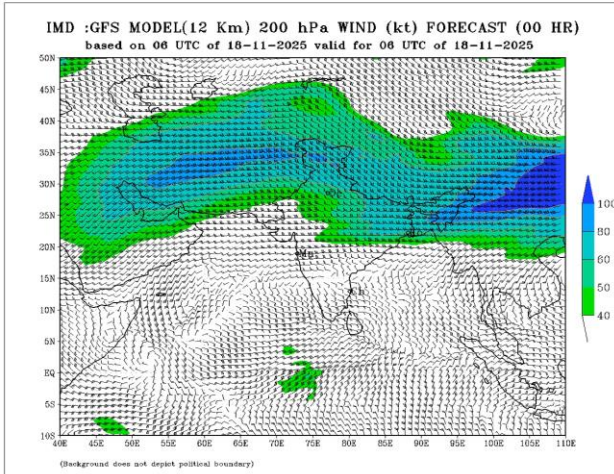
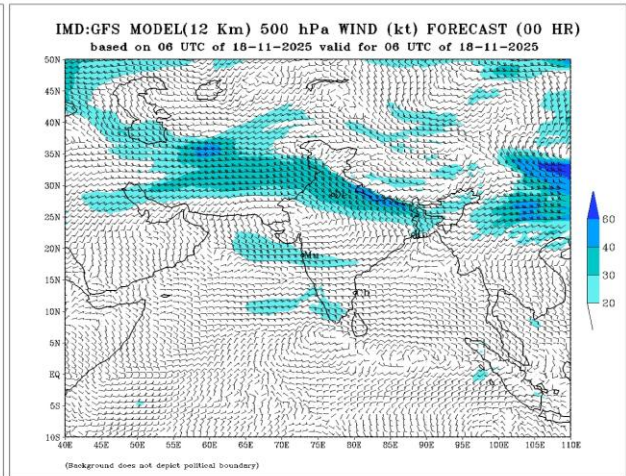
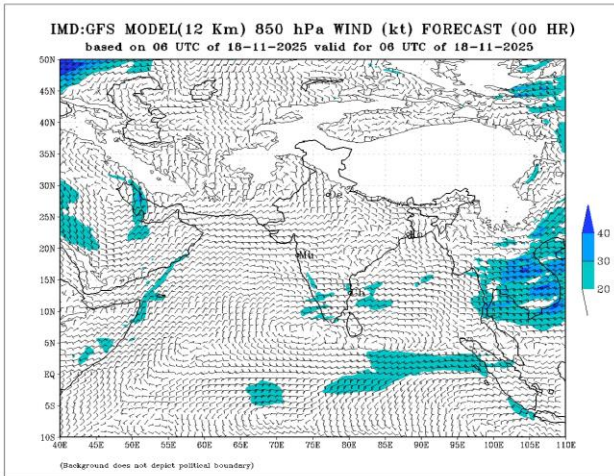
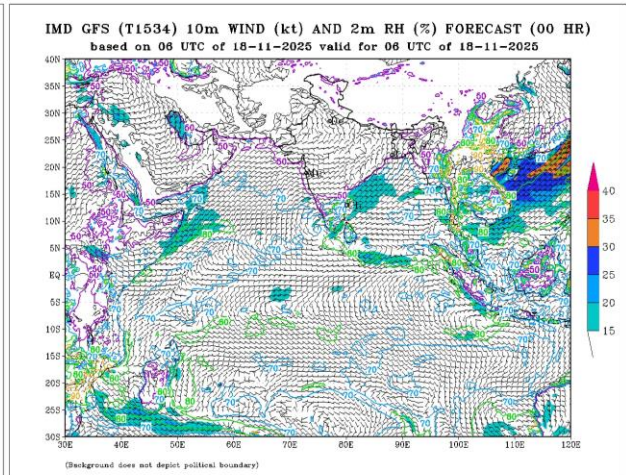
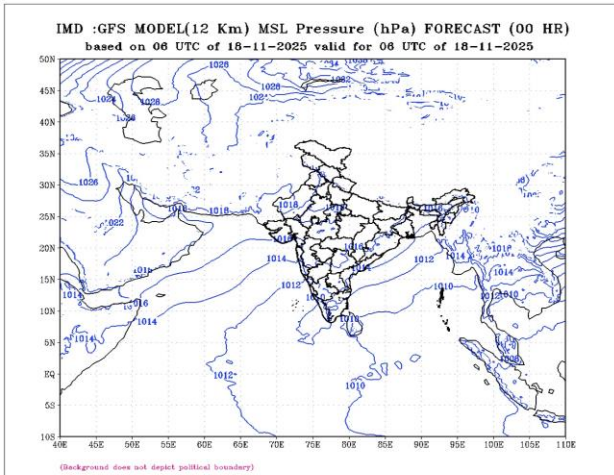
Probability is indicated as NIL for 0%, LOW for 1-33%, MOD for 34-67% and High for 68-100%. Every 24 hrs forecast ends at the 0300 UTC of date.

**Intense Observation Period (IOP):** Sri Lanka, Tamil Nadu & south Andhra Pradesh for 18<sup>th</sup> November.

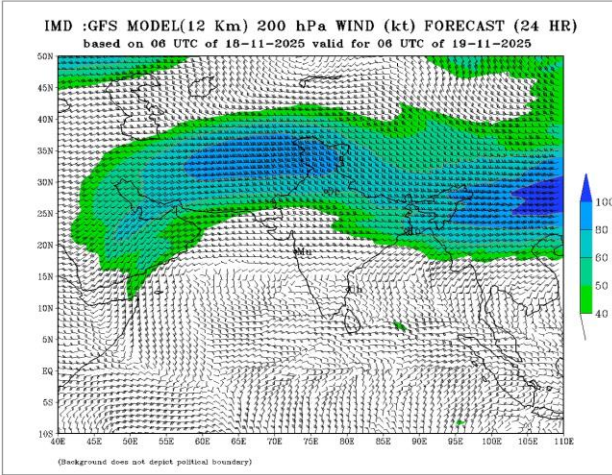
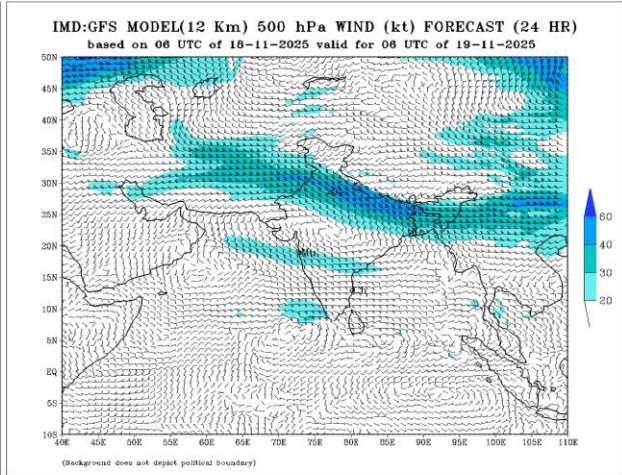
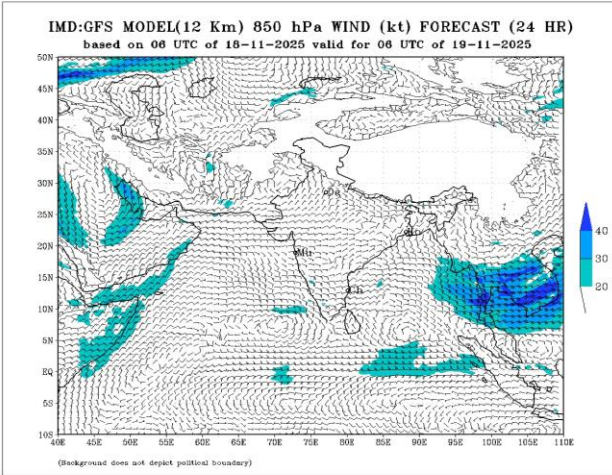
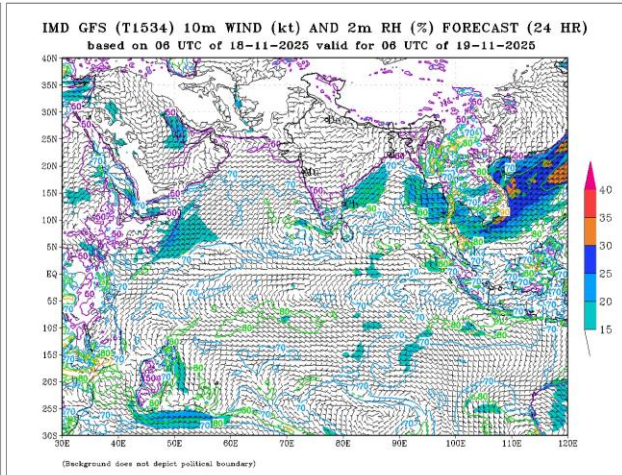
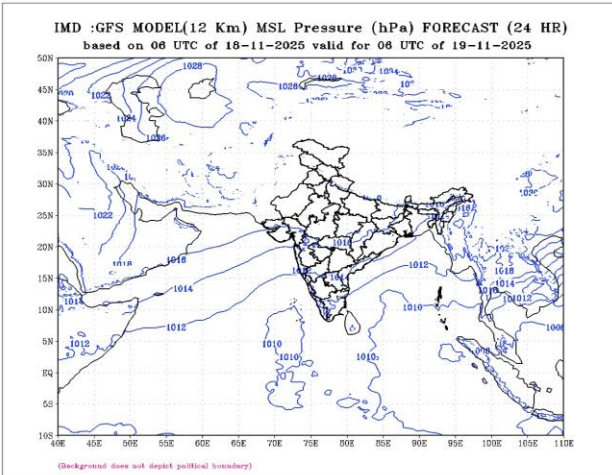
# INSAT 3DS imageries at 0600 UTC of 17<sup>th</sup> & 18<sup>th</sup> November



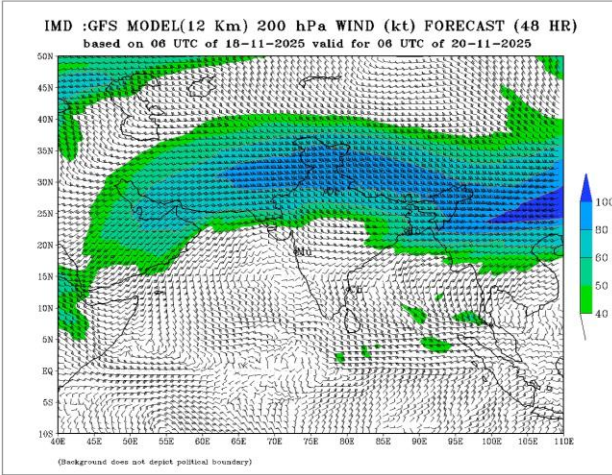
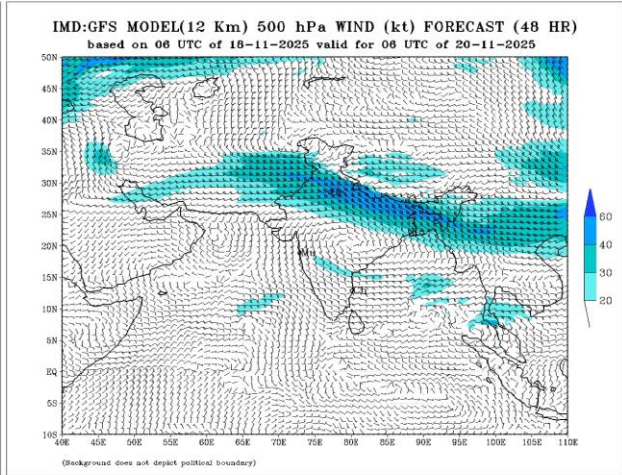
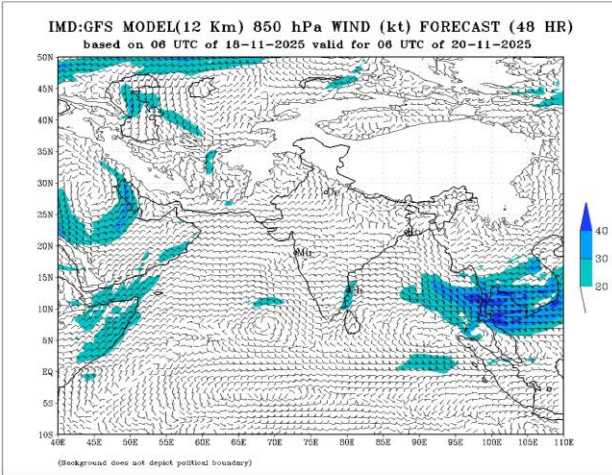
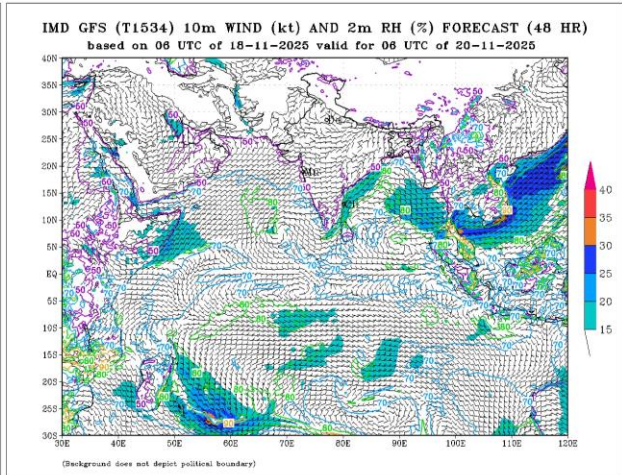
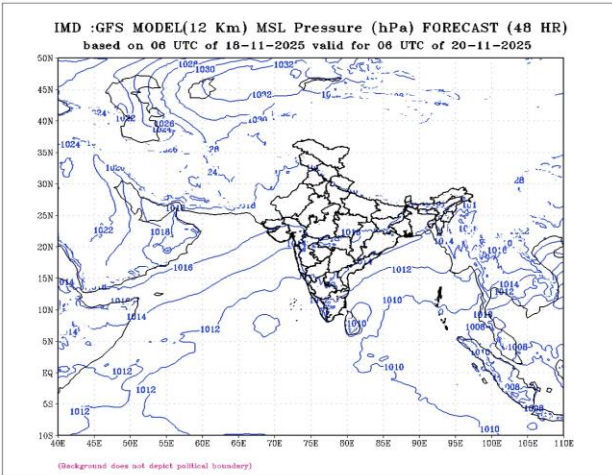
## Forecast +00h



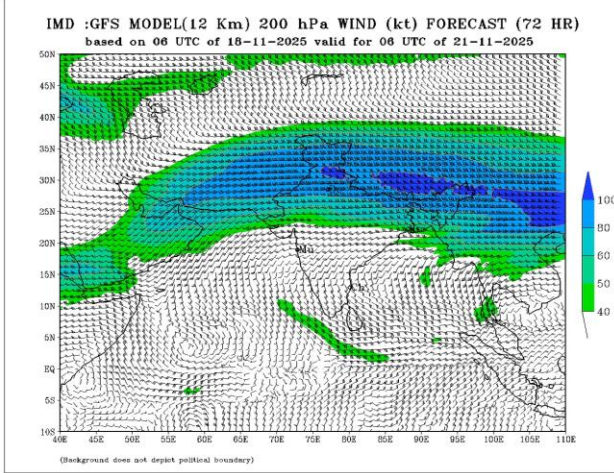
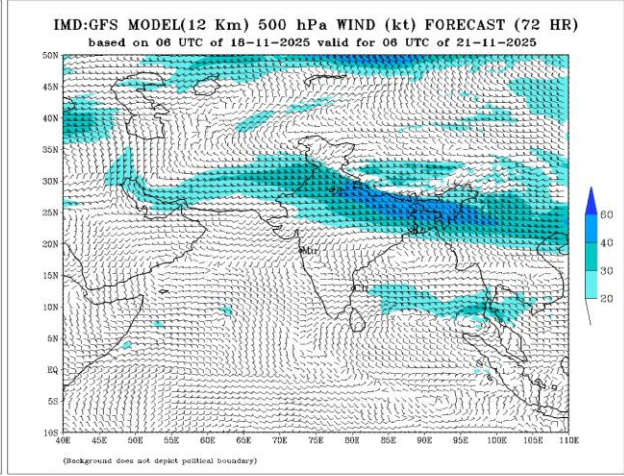
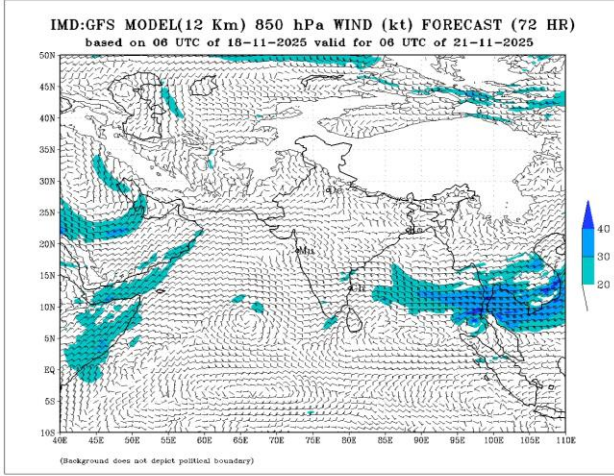
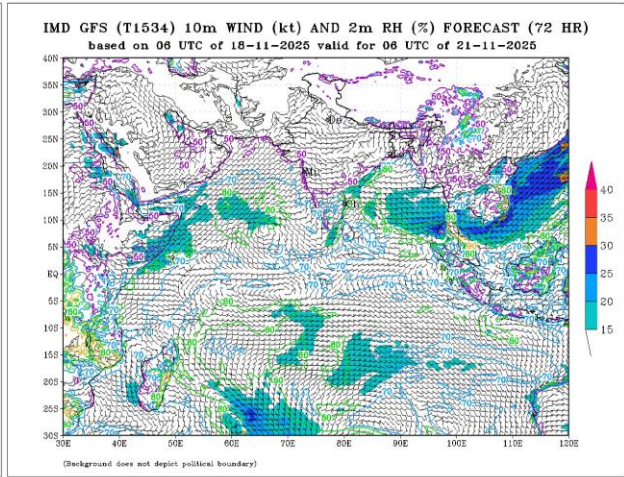
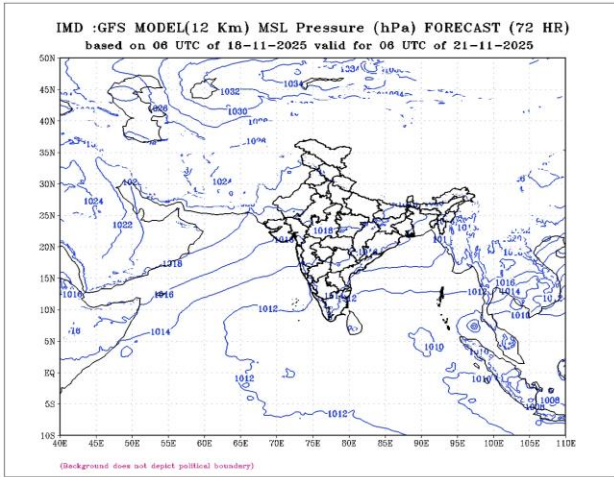
# Forecast +24h



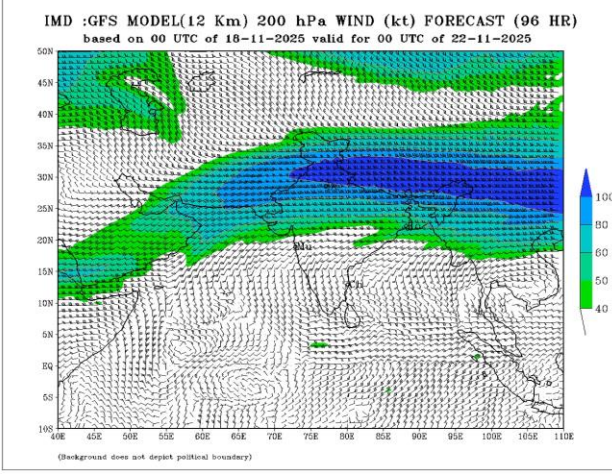
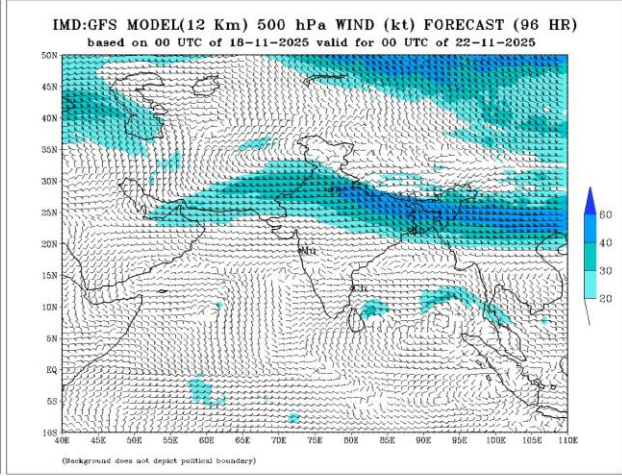
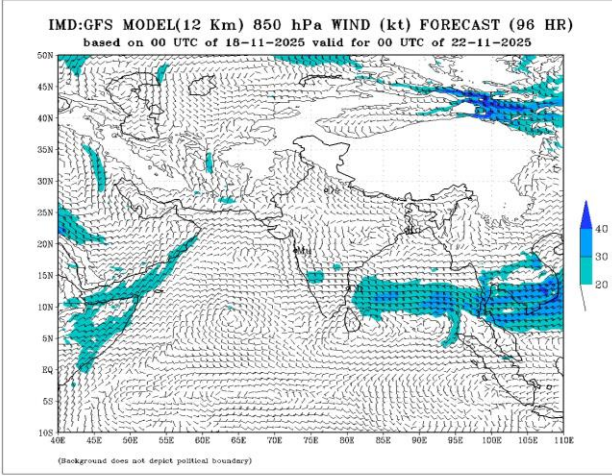
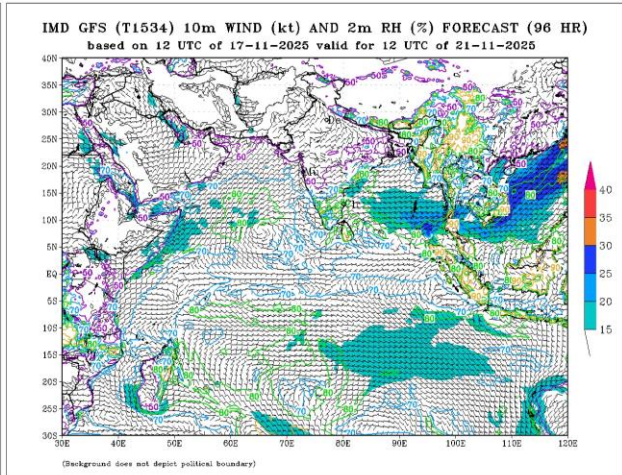
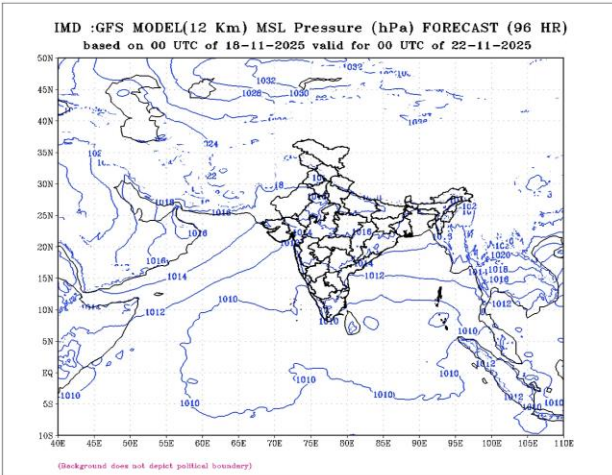
# Forecast +48h



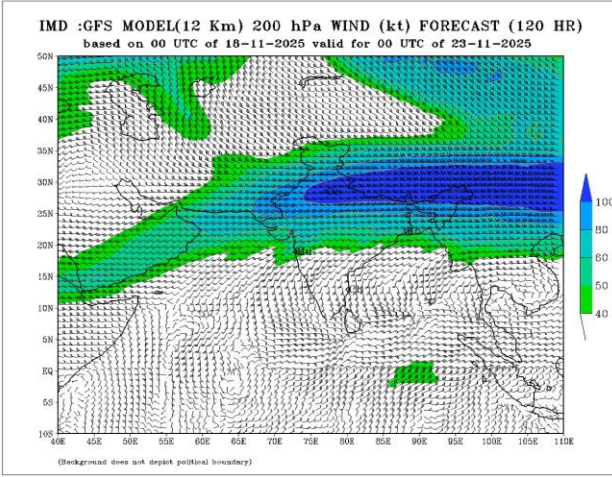
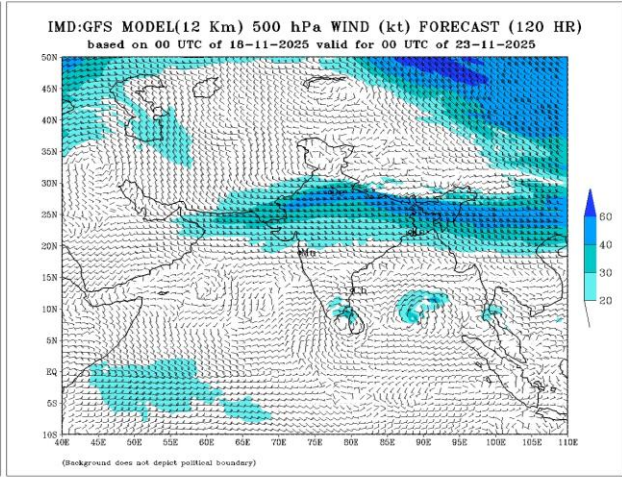
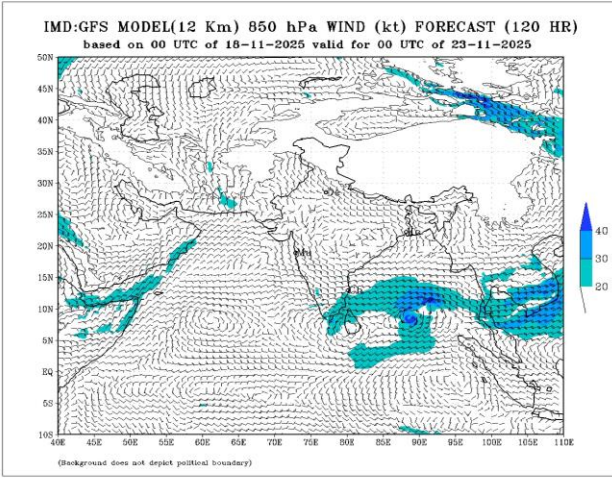
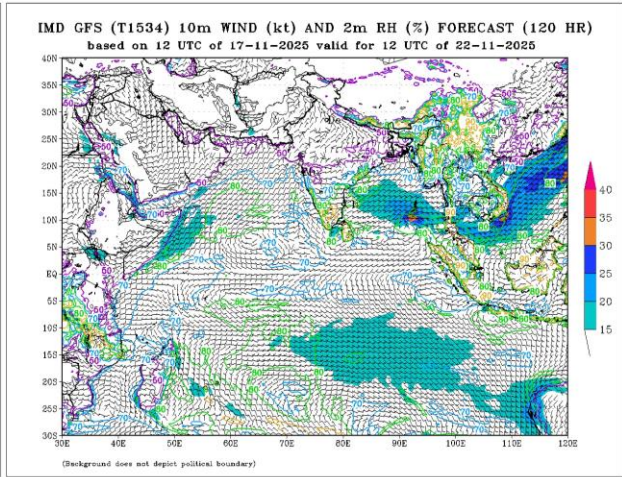
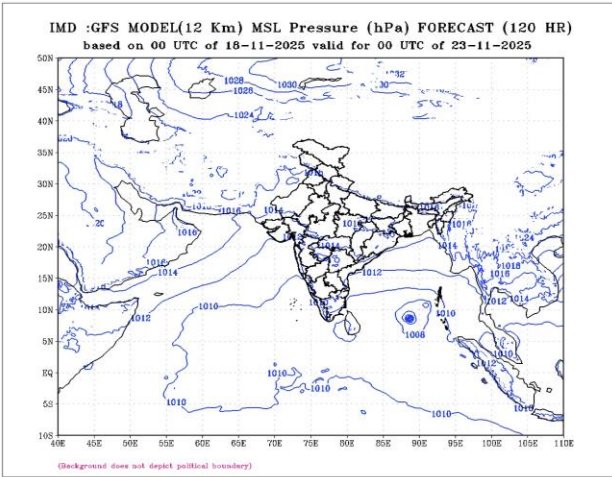
# Forecast +72h



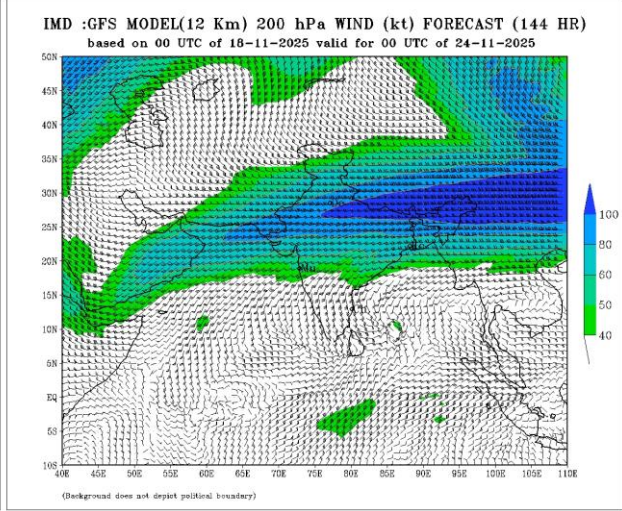
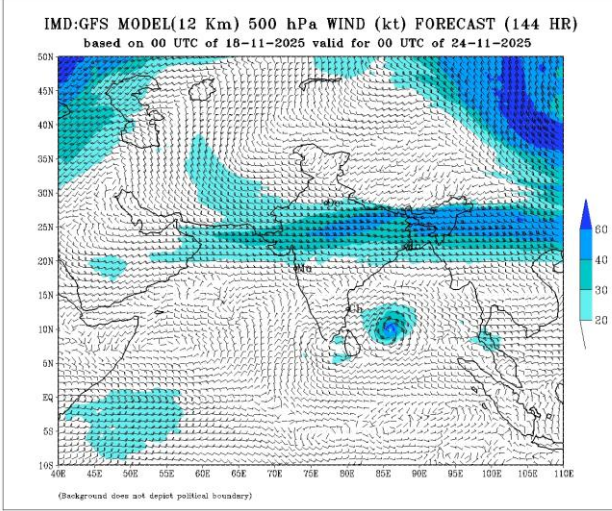
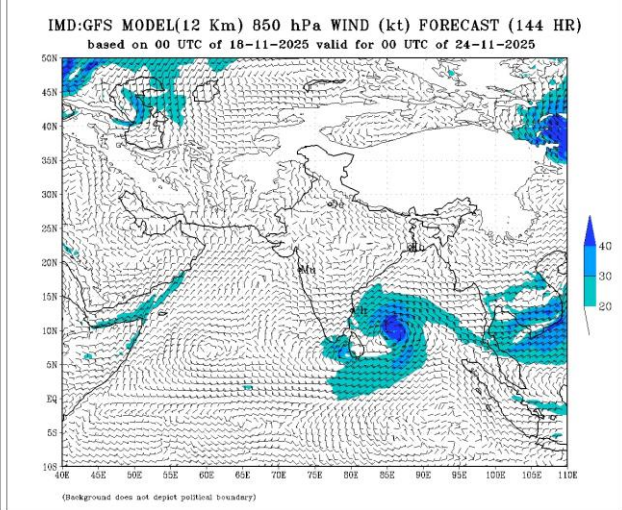
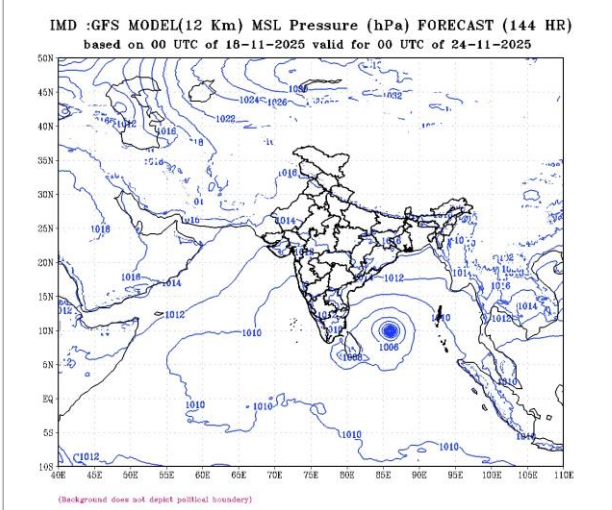
# Forecast +96h



# Forecast +120h



# Forecast +144h



# Forecast +168h

