



**REGIONAL SPECIALISED METEOROLOGICAL CENTRE -TROPICAL CYCLONES, NEW DELHI
TROPICAL WEATHER OUTLOOK**

DEMS-RSMC TROPICAL CYCLONES NEW DELHI DATED 04.07.2026

TROPICAL WEATHER OUTLOOK FOR THE NORTH INDIAN OCEAN (THE BAY OF BENGAL OF AND THE ARABIAN SEA) VALID FOR THE NEXT 168 HOURS ISSUED AT 0600 UTC OF 04.07.2026 BASED ON 0300 UTC OF 04.07.2026.

BAY OF BENGAL:

Yesterday's Low Pressure Area over Northwest Bay of Bengal & neighbourhood became Well Marked Low Pressure Area over the same region, at 0000 UTC of today, the 04th July 2026 and persisted at 0300 UTC of today, the 04th July 2026. The associated cyclonic circulation extends upto 9.6 km above mean sea level tilting southwestwards with height. It is very likely to move west-northwestward across north Odisha and north Chhattisgarh during next 3 days. Associated scattered to broken low and medium clouds with embedded intense to very intense convection over north & central Bay of Bengal, Odisha (minimum cloud top temperature -70°C to -90°C) and moderate to intense convection lay over south Gangetic West Bengal (minimum cloud top temperature minus -40°C to -70°C).

Scattered to broken low and medium clouds with embedded intense to very intense convection lay over Bay of Bengal, Andaman Sea, Arakan coast and Tenasserim coast.

***PROBABILITY OF CYCLOGENESIS (FORMATION OF DEPRESSION) DURING NEXT 168 HRS)**

24 HOURS	24-48 HOURS	48-72 HOURS	72-96 HOURS	96-120 HOURS	120-144 HOURS	144-168 HOURS
NIL	NIL	NIL	NIL	NIL	NIL	NIL

***NOTE: EVERY 24HR FORECAST IS VALID UPTO 0300 UTC (0830 IST) OF NEXT DAY**

ARABIAN SEA:

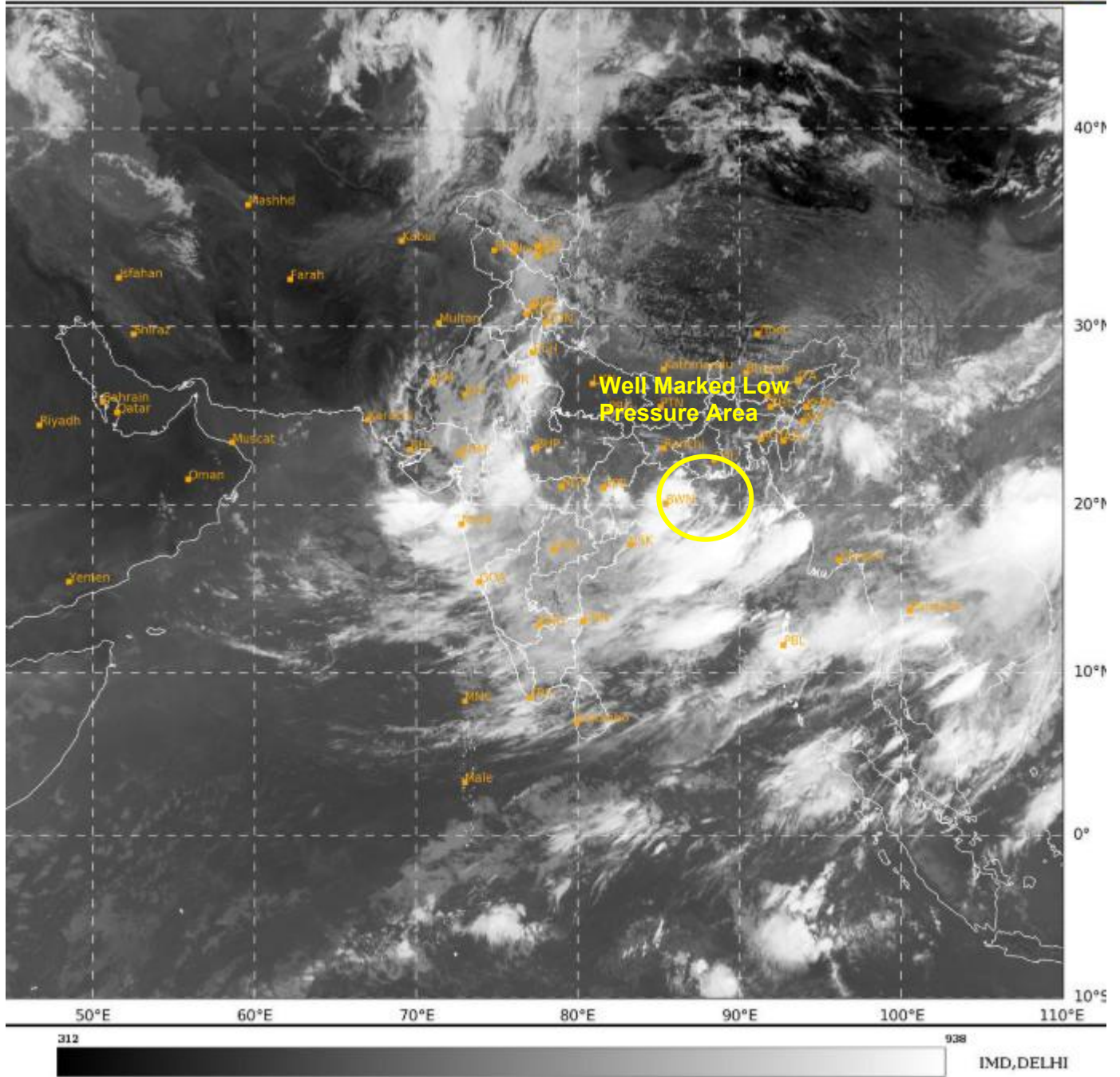
Scattered to broken low and medium clouds with embedded intense to very intense convection lay over northeast Arabian Sea, south Gujmaha coasts and gulf of Cambay. Scattered low and medium clouds with embedded moderate to intense convection lay over rest of eastcentral Arabian Sea, southeast Arabian Sea, Lakshadweep Islands area and isolated weak to moderate convection lay over rest of Arabian Sea, Gulf of Kutch, Maldives & Comorin area.

***PROBABILITY OF CYCLOGENESIS (FORMATION OF DEPRESSION) DURING NEXT 168 HRS:**

24 HOURS	24-48 HOURS	48-72 HOURS	72-96 HOURS	96-120 HOURS	120-144 HOURS	144-168 HOURS
NIL	NIL	NIL	NIL	NIL	NIL	NIL

***NOTE: EVERY 24HR FORECAST IS VALID UPTO 0300 UTC (0830 IST) OF NEXT DAY**

REMARKS: NIL



Cloud distribution: (a) Isolated: <25%, Scattered:25-50%, Broken: 51-75%, Solid:>75%, Convection Intensity: (a) Weak: Cloud Top Temperature(CTT)>-25°C, (b) Moderate: CTT:-25°Cto-40°C, (c) Intense: CTT: -41°Cto -70°C and (d) Very Intense::Less than -70°C Probability of cyclogenesis (formation of depression) :NIL:0%, LOW:1-33%, MODERATE:34-66% and HIGH:67-100%
This is a guidance Bulletin for WMO/ESCAP Panel Member countries. Visit respective National websites for Country specific Bulletins.