



**India Meteorological Department
(Ministry of Earth Sciences)**

HOURLY UPDATE ON SEVERE CYCLONIC STORM “DANA”

BULLETIN NO. 16

DATE: 25-10-2024

TIME OF ISSUE: 0945 HRS IST

DATE/TIME (IST) OF OBSERVATION	BASED ON 25-10-2024 (0830 HRS IST)
LOCATION LATITUDE/LONGITUDE	THE SEVERE CYCLONIC STORM “DANA” (PRONOUNCED AS DANA) MOVED NORTH-NORTHWESTWARDS WITH A SPEED OF 10 KMPH AND WEAKENED INTO A CYCLONIC STORM OVER NORTH COASTAL ODISHA AND LAY CENTRED NEAR LATITUDE 21.20° N AND LONGITUDE 86.70°E AT 0830 HRS IST OF TODAY, THE 25TH OCTOBER, ABOUT 30 KM NORTHEAST OF BHADRAK AND 50 KM NORTH-NORTHWEST OF DHAMARA. THE MAXIMUM SUSTAINED WIND SPEED AROUND THE CENTRE OF THE CYCLONE IS ABOUT 80-90KMPH GUSTING TO 100KMPH. THE LANDFALL PROCESS HAS COMPLETED.
CURRENT INTENSITY WIND SPEED	CYCLONIC STORM 80-90 KMPH GUSTING TO 100 KMPH
FORECAST	<i>IT IS LIKELY TO MOVE NORTHWESTWARDS ACROSS NORTH ODISHA AND WEAKEN GRADUALLY INTO A DEEP DEPRESSION DURING NEXT 06 HOURS.</i> THE SYSTEM IS UNDER CONTINUOUS SURVEILLANCE OF THE DOPPLER WEATHER RADAR AT PARADIP.

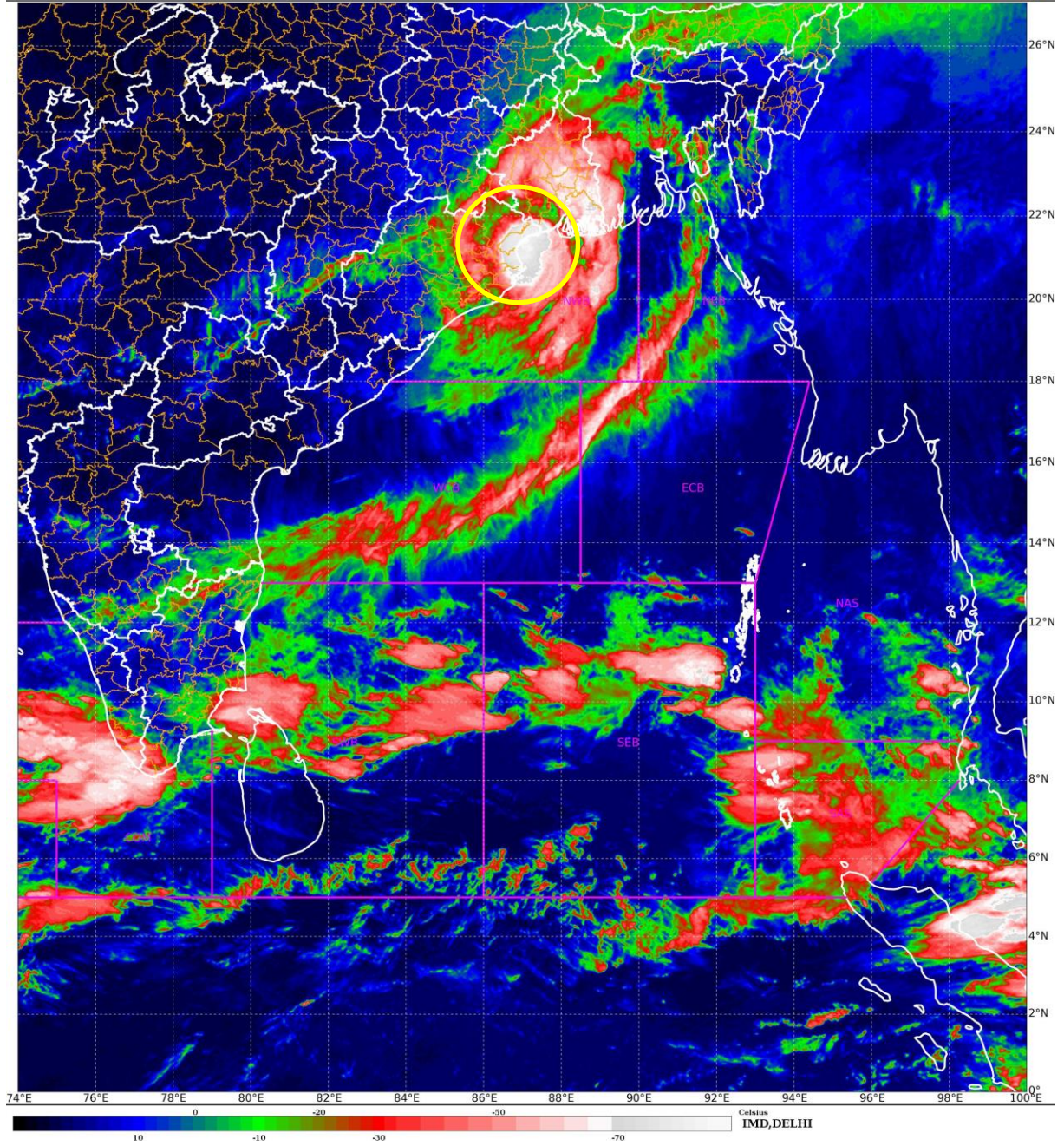
OBSERVED WEATHER:

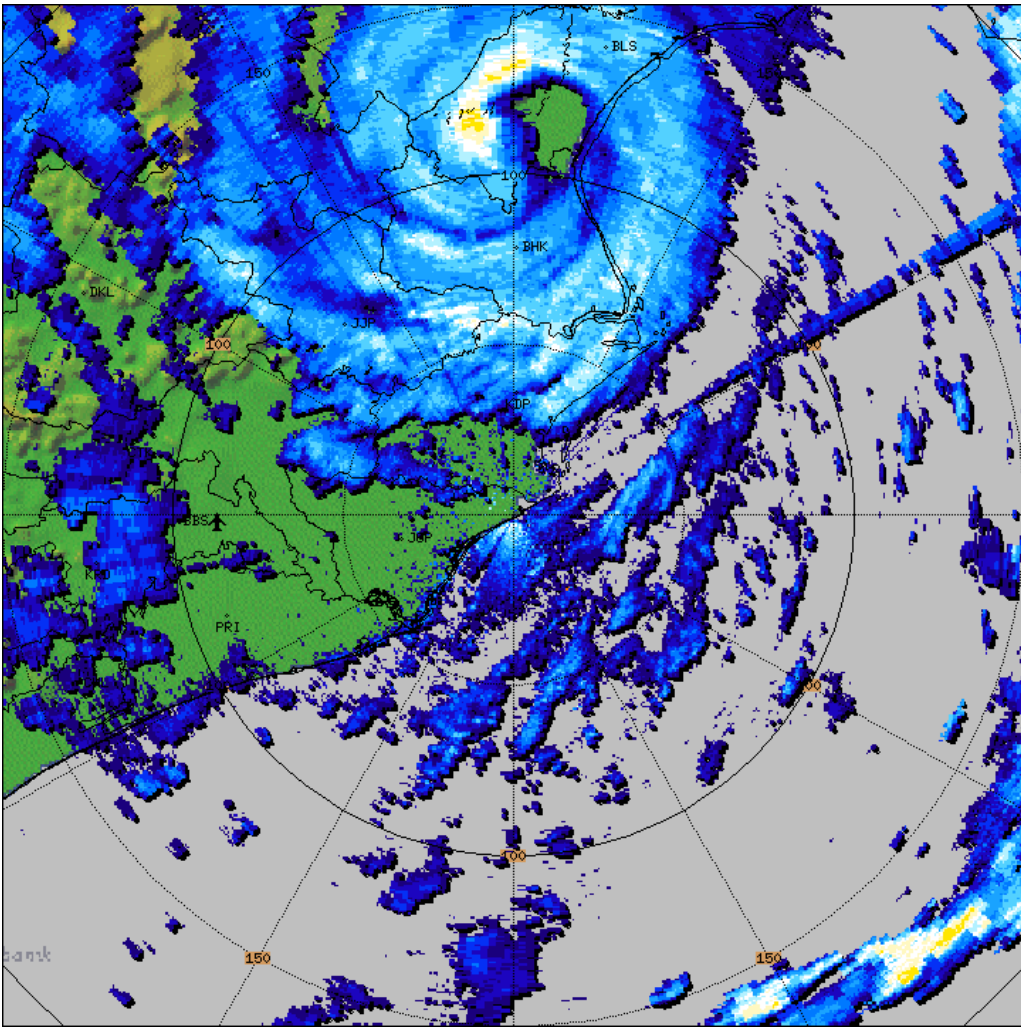
STATION	RAINFALL (MM) (0830-0830 HRS IST)	WINDSPEED (KMPH) AT 0830 HRS IST	STATION	RAINFALL (0830-0830 HRS IST)	WINDSPEED (KMPH) AT 0830 HRS IST
BHUBANESWAR	20.4	08/NWLY	HALDIA	80.0	20/ESELY
BALASORE	68.8	37/ENEYLY	DIGHA	37.5	11/SSELY
CHANDBALI	158.6	15/SLY	DIAMOND HARBOUR	93.0	5/ESELY
PARADIP	76.4	10/WSWLY			

SATELLITE IMAGERY

SAT : INSAT-3DR IMG
IMG_TIR1_TEMP 10.8 um
LIC Mercator

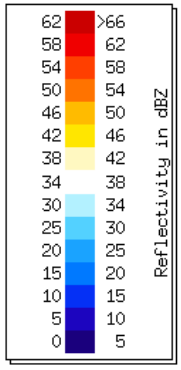
25-10-2024/(0315 to 0342) GMT
25-10-2024/(0845 to 0912) IST





PARADEEP-RADAR
 PPI
 PPI_Z_150KM
 Task: IMD-B
 PRF:600/450
 Elevation:0.5
 Max Range:150 km
03:52:22Z
25 OCT 2024 UTC

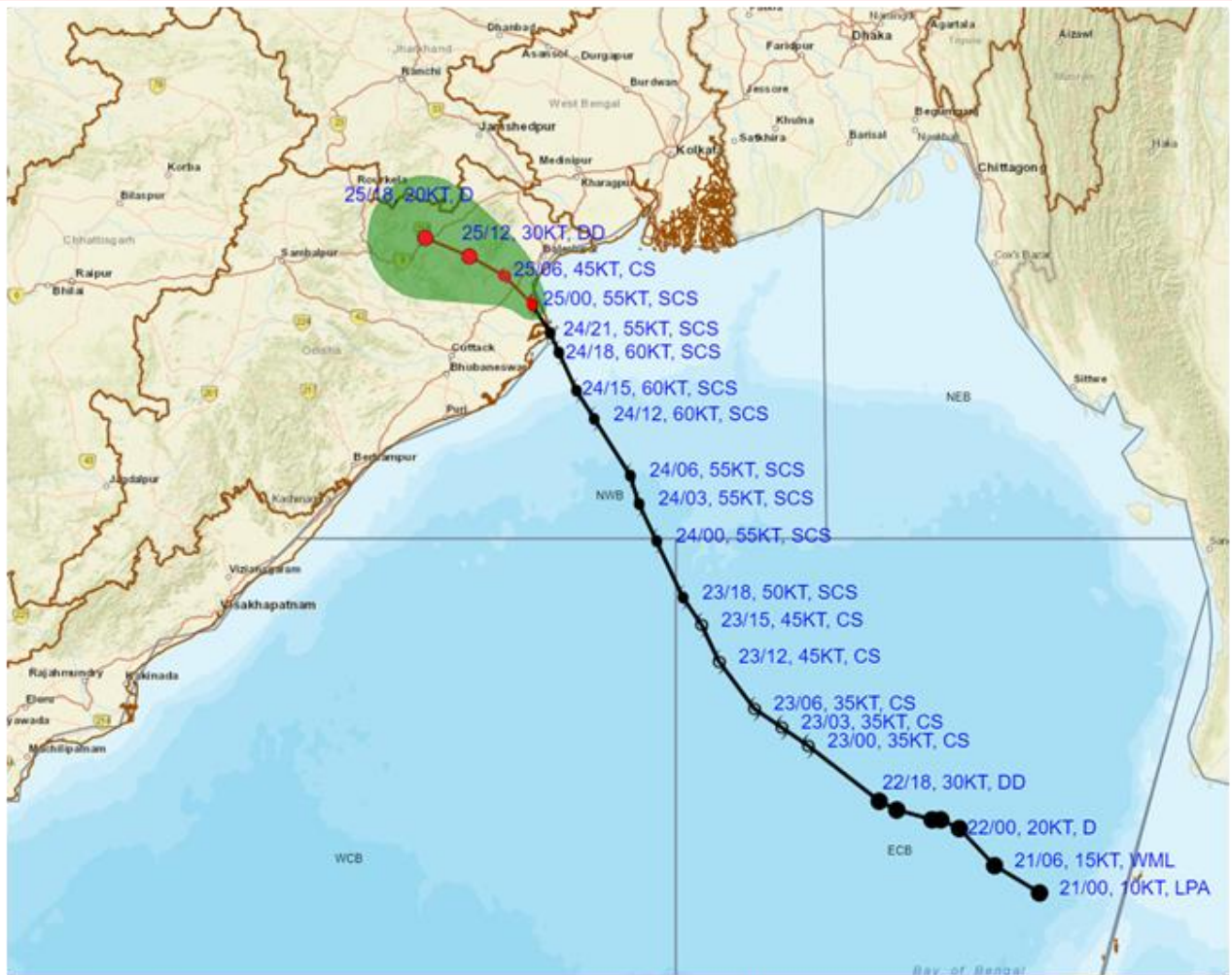
09:22:22 IST



RADAR OBSERVATIONS (MAX_Z) OF DWR PARADIP



OBSERVED AND FORECAST TRACK ALONG WITH CONE OF UNCERTAINTY OF SEVERE CYCLONIC STORM 'DANA' OVER NORTH COASTAL ODISHA BASED ON 0000 UTC (0530 Hrs. IST) OF 25th OCTOBER 2024



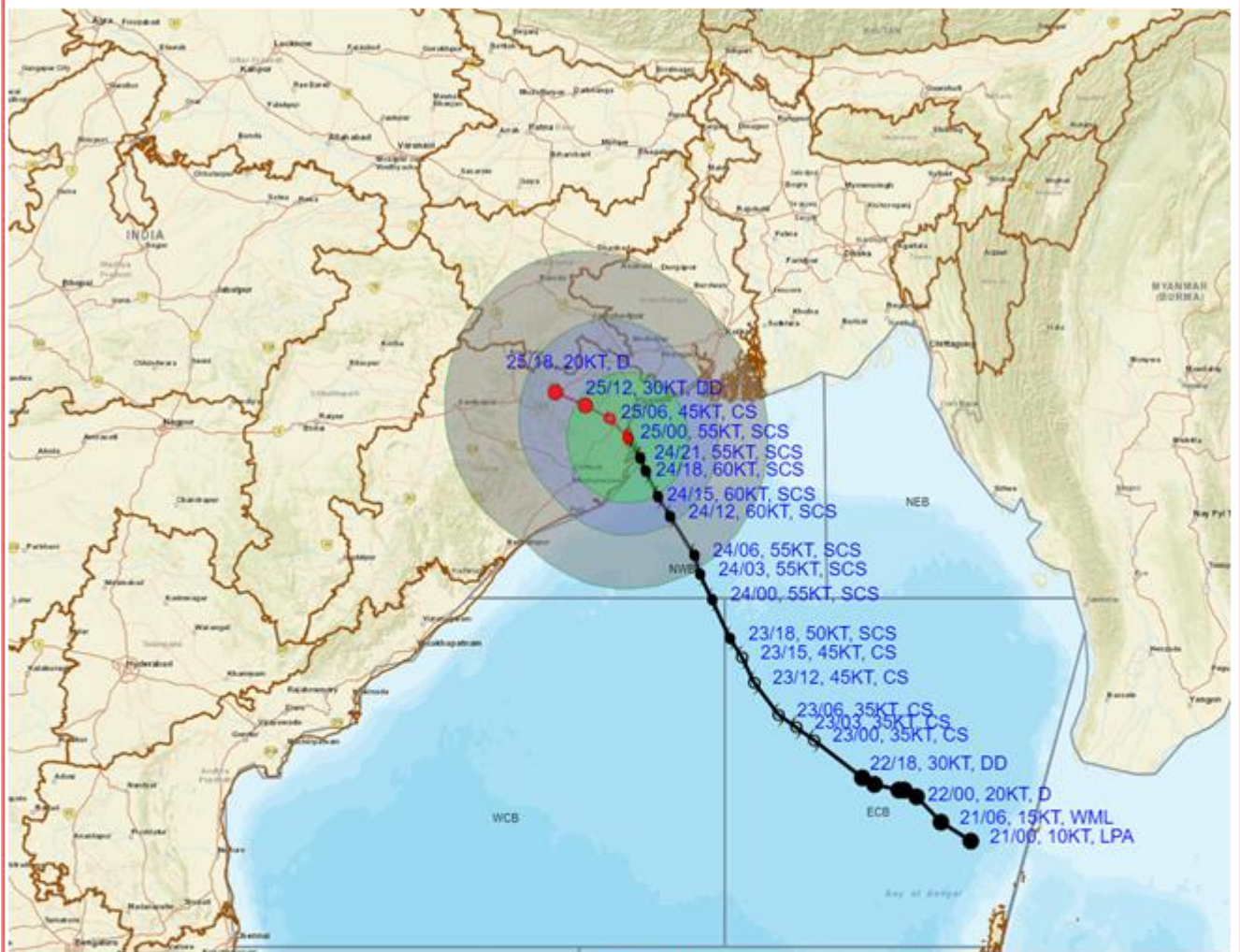
DATE/TIME : IN UTC
 IST : UTC + 0530
 KT : NAUTICAL MILE S/HOUR = 1.85 KM/HOUR
 LPA : LOW PRESSURE AREA
 WML : WELL MARKED LOW PRESSURE AREA
 D : DEPRESSION (17-27 KT)
 DD : DEEP DEPRESSION (28-33 KT)
 CS : CYCLONIC STORM (34-47 KT)
 SCS : SEVERE CYCLONIC STORM (48-63 KT)
 VSCS : VERY SEVERE CYCLONIC STORM (64-89 KT)
 ESCS : EXTREMELY SEVERE CYCLONIC STORM (90-119 KT)
 SuCS : SUPER CYCLONIC STORM (≥120 KT)

● LESS THAN 34 KT
 ○ 34-47 KT
 ○ ≥ 48 KT
 — OBSERVED TRACK
 — FORECAST TRACK
 ▲ CONE OF UNCERTAINTY

Forecast	DISTANCE (KM) AND DIRECTION FROM STATIONS		
Date and Time (UTC)	PARADIP (CWR)	DHAMARA	SAGAR ISLAND
25.10.24/0000	80, N	20, NNW	150, WSW



OBSERVED AND FORECAST TRACK ALONGWITH QUADRANT WIND DISTRIBUTION OF SEVERE CYCLONIC STORM 'DANA' OVER NORTH COASTAL ODISHA BASED ON 0000 UTC (0530 Hrs. IST) OF 25th OCTOBER 2024



DATE/TIME : IN UTC
 IST : UTC + 0530
 KT : NAUTICAL MILE S/HOUR = 1.85 KM/HOUR
 LPA : LOW PRESSURE AREA
 WML : WELL MARKED LOW PRESSURE AREA
 D : DEPRESSION (17-27 KT)
 DD : DEEP DEPRESSION (28-33 KT)
 CS : CYCLONIC STORM (34-47 KT)
 SCS : SEVERE CYCLONIC STORM (48-63 KT)
 VSCS : VERY SEVERE CYCLONIC STORM (64-89 KT)
 ESCS : EXTREMELY SEVERE CYCLONIC STORM (90-119 KT)
 SuCS : SUPER CYCLONIC STORM (≥120 KT)

● LESS THAN 34 KT
 ○ 34-47 KT
 ● ≥ 48 KT
 — OBSERVED TRACK
 — FORECAST TRACK
 — CONE OF UNCERTAINTY
 AREA OF MAXIMUM SUSTAINED WIND SPEED:
 ■ 28-33 KT (52-61 KMPH)
 ■ 34-49 KT (62-91 KMPH)
 ■ 50-63 KT (92-117 KMPH)
 ■ ≥ 64 KT (≥118 KMPH)

IMPACT OVER THE SEA

MSW (knot/kmph)	Impact	Action
28-33 (52-61)	Very rough seas	Total suspension of fishing operations
34-49 (62-91)	High to very high seas	Total suspension of fishing operations
50-63 (92-117)	Very high seas	Total suspension of fishing operations
≥ 64 (≥118)	Phenomenal	Total suspension of fishing operations