



**India Meteorological Department
(Ministry of Earth Sciences)**

HOURLY UPDATE ON CYCLONIC STORM 'GULAB'

BULLETIN NO. 12

DATE: 26-09-2021

TIME OF ISSUE: 2330 HRS IST

DATE/TIME (IST) OF OBSERVATION	BASED ON 26-09-2021 (2230 HRS IST)
LOCATION LATITUDE/LONGITUDE	<p>THE CYCLONIC STORM 'GULAB' (PRONOUNCED AS GUL-AAB) OVER NORTH COASTAL ANDHRA PRADESH MOVED NEARLY WESTWARDS WITH A SPEED OF 26 KMPH DURING LAST 06 HOURS, LAY CENTRED AT 2230 HRS IST OVER NORTH COASTAL ANDHRA PRADESH NEAR LAT. 18.4°N AND LONG. 83.5°E, ABOUT 180 KM WEST-SOUTHWEST OF GOPALPUR (ODISHA) & 60 KM WEST-NORTHWEST OF KALINGAPATNAM (ANDHRA PRADESH).</p> <p>THE LANDFALL PROCESS HAS BEEN COMPLETED, HOWEVER THE SYSTEM MAINTAINS ITS CYCLONIC INTENSITY AND LIKELY TO MOVE NEARLY WESTWARDS AND WEAKEN INTO A DEEP DEPRESSION DURING NEXT 4-5 HOURS.</p>
CURRENT INTENSITY	65-75 KMPH GUSTING TO 85 KMPH
PAST MOVEMENT	MOVED NEARLY WESTWARDS WITH A SPEED OF 31 KMPH DURING PAST 06 HOURS.
FORECAST MOVEMENT AND INTENSITY	IT IS LIKELY TO WEAKEN INTO DEEP DEPRESSION DURING NEXT 4-5 HOURS AND MOVE NEARLY WESTWARDS.
FORECAST RAINFALL	<ul style="list-style-type: none">• 26TH SEP: LIGHT TO MODERATE RAINFALL AT MOST PLACES WITH HEAVY TO VERY HEAVY FALLS AT A FEW PLACES & EXTREMELY HEAVY RAINFALL (≥ 20 CM) AT ISOLATED PLACES VERY LIKELY OVER SOUTH ODISHA AND NORTH COASTAL ANDHRA PRADESH; HEAVY TO VERY HEAVY FALLS AT ISOLATED PLACES IS ALSO LIKELY OVER TELANGANA AND HEAVY FALLS AT ISOLATED PLACES OVER NORTH INTERIOR ODISHA & CHHATTISGARH.• 27TH SEP: LIGHT TO MODERATE RAINFALL AT MOST PLACES WITH HEAVY TO VERY HEAVY & EXTREMELY HEAVY RAINFALL (≥ 20 CM) AT ISOLATED PLACES VERY LIKELY OVER SOUTH CHHATTISGARH; HEAVY TO VERY HEAVY FALLS AT ISOLATED PLACES OVER ODISHA, TELANGANA & VIDARBHA AND HEAVY RAINFALL AT ISOLATED PLACES OVER COASTAL WEST BENGAL & NORTH CHATTISGARH.

FORECAST WIND SPEED
(KMPH)

65-75 KMPH GUSTING TO 85 KMPH FOR NEXT 2-3 HOURS AND
GRADUALLY DECREASE THEREAFTER

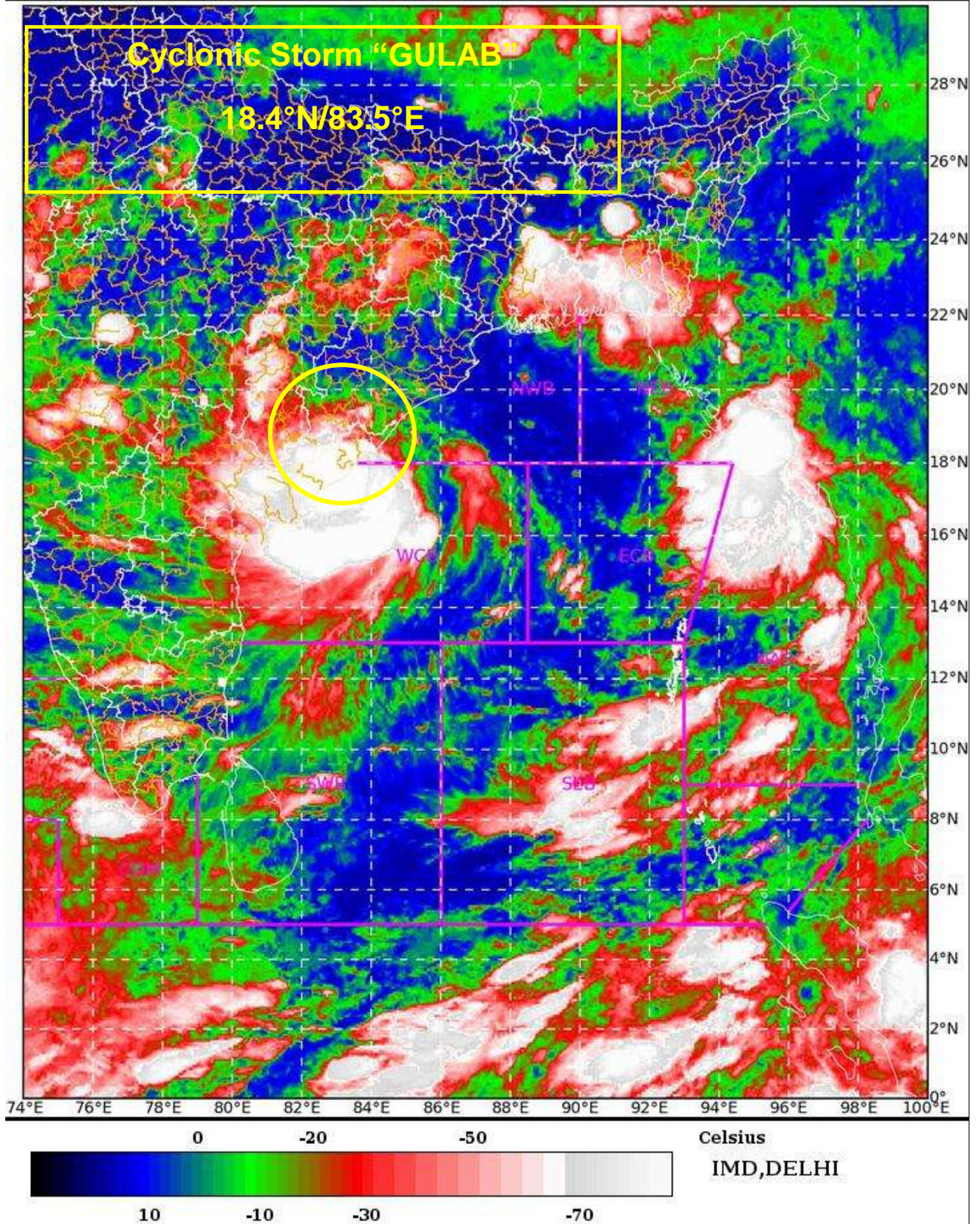
SAT : INSAT-3D IMG

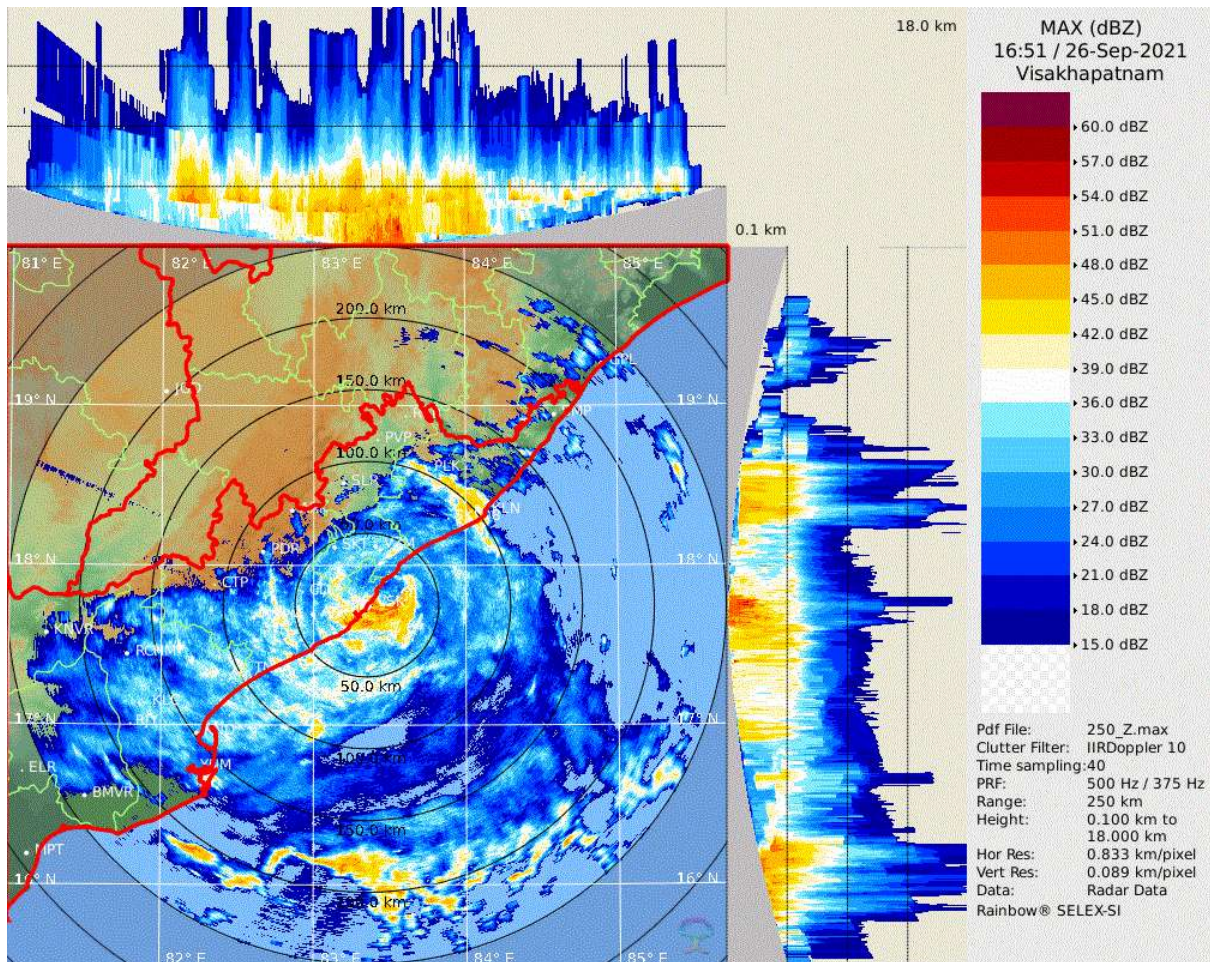
26-09-2021/(1630 to 1656) GMT

IMG_TIR1_TEMP 10.8 um

26-09-2021/(2200 to 2226) IST

L1C Mercator





Reflectivity imagery from Doppler weather RADAR Vishakhapatnam based on 2221 hrs IST of 26th September 2021.



OBSERVED AND FORECAST TRACK ALONGWITH QUADRANT WIND DISTRIBUTION OF CYCLONIC STORM GULAB OVER NORTH COASTAL ANDHRA PRADESH BASED ON 1500 UTC OF 26TH SEPTEMBER, 2021



DATE/TIME IN UTC

IST=UTC + 0530

L: LOW PRESSURE AREA

WML: WELL MARKED LOW PRESSURE AREA

D: DEPRESSION (17-27 KT)

DD: DEEP DEPRESSION (28-33 KT)

CS: CYCLONIC STORM (34-47 KT)

SCS: SEVERE CYCLONIC STORM (48-63KT)

VSCS: VERY SEVERE CYCLONIC STORM (64-89 KT)

ESCS: EXTREMELY SEVERE CYCLONIC STORM (90-119 KT)

SuCS: SUPER CYCLONIC STORM (≥ 120 KT)

● LESS THAN 34 KT

○ 34-47 KT

● ≥ 48 KT

— OBSERVED TRACK

— FORECAST TRACK

▲ CONE OF UNCERTAINTY

AREA OF MAXIMUM SUSTAINED WIND SPEED:

■ 28-33 KT (52-61 KMPH)

■ 34-49 KT (62-91 KMPH)

■ 50-63 KT (92-117 KMPH)

■ ≥ 64 KT (≥118 KMPH)

IMPACT OVER THE SEA

MSW (knot/kmph)	Impact	Action
28-33 (52-61)	Very rough seas	Total suspension of fishing operations
34-49 (62-91)	High to very high seas	Total suspension of fishing operations
50-63 (92-117)	Very high seas	Total suspension of fishing operations
≥ 64 (≥118)	Phenomenal	Total suspension of fishing operations



OBSERVED AND FORECAST TRACK OF CYCLONIC STORM GULAB OVER NORTH COASTAL ANDHRA PRADESH BASED ON 1500 UTC OF 26TH SEPTEMBER, 2021



DATE/TIME IN UTC

IST=UTC + 0530

L: LOW PRESSURE AREA

WML: WELL MARKED LOW PRESSURE AREA

D: DEPRESSION (17-27 KT)

DD: DEEP DEPRESSION (28-33 KT)

CS: CYCLONIC STORM (34-47 KT)

SCS: SEVERE CYCLONIC STORM (48-63KT)

VSCS: VERY SEVERE CYCLONIC STORM (64-89 KT)

ESCS: EXTREMELY SEVERE CYCLONIC STORM (90-119 KT)

SuCS: SUPER CYCLONIC STORM (\geq 120 KT)

● LESS THAN 34 KT

○ 34-47 KT

○ \geq 48 KT

— OBSERVED TRACK

— FORECAST TRACK

▲ CONE OF UNCERTAINTY

Odisha.

