



**India Meteorological Department
(Ministry of Earth Sciences)**

**HOURLY UPDATE ON EXTREMELY SEVERE CYCLONIC STORM 'TAUKTAE'
OVER NORTHEAST & ADJOINING EASTCENTRAL ARABIAN SEA**

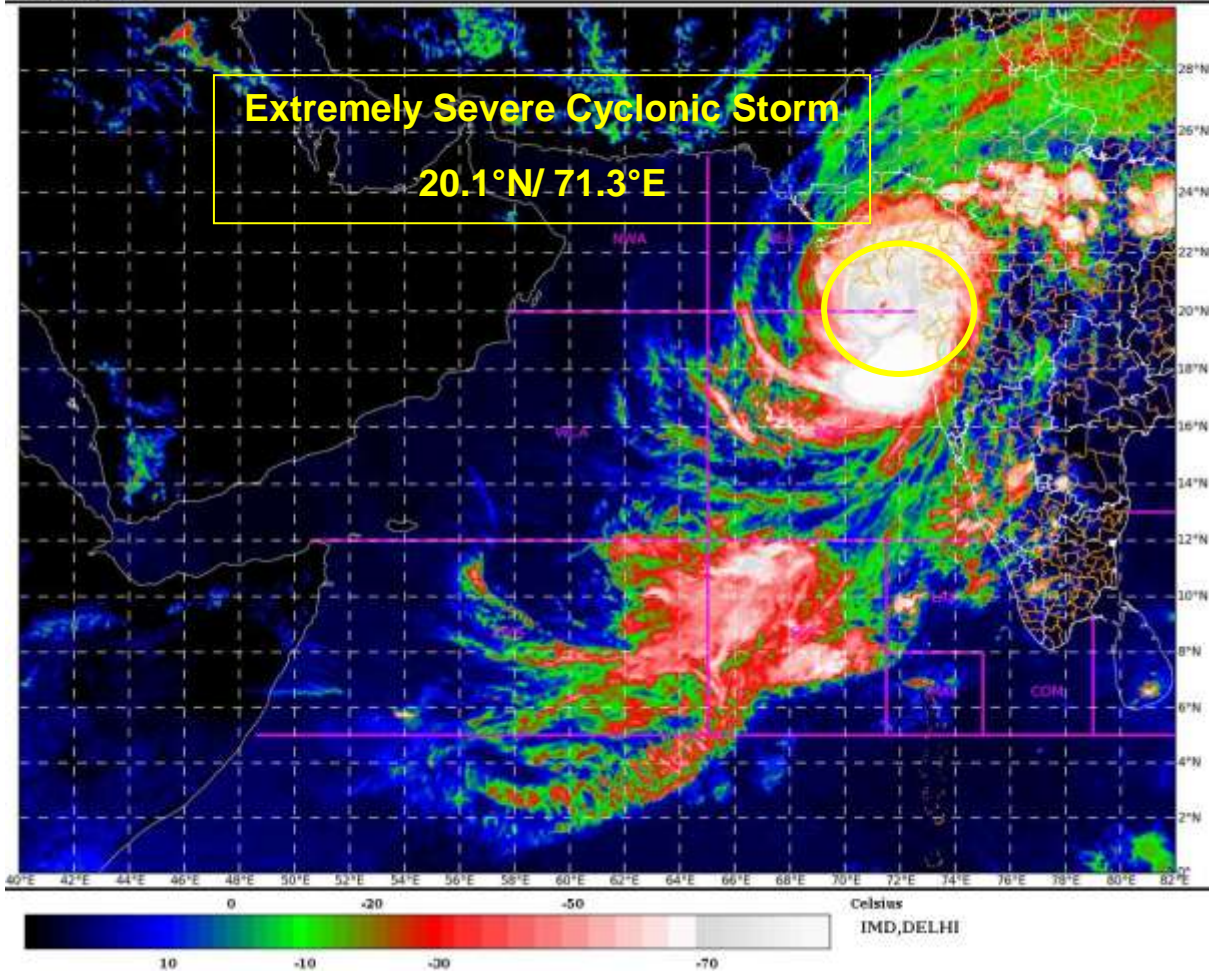
BULLETIN NO. 08

DATE: 17-05-2021

TIME OF ISSUE: 1850 HRS IST

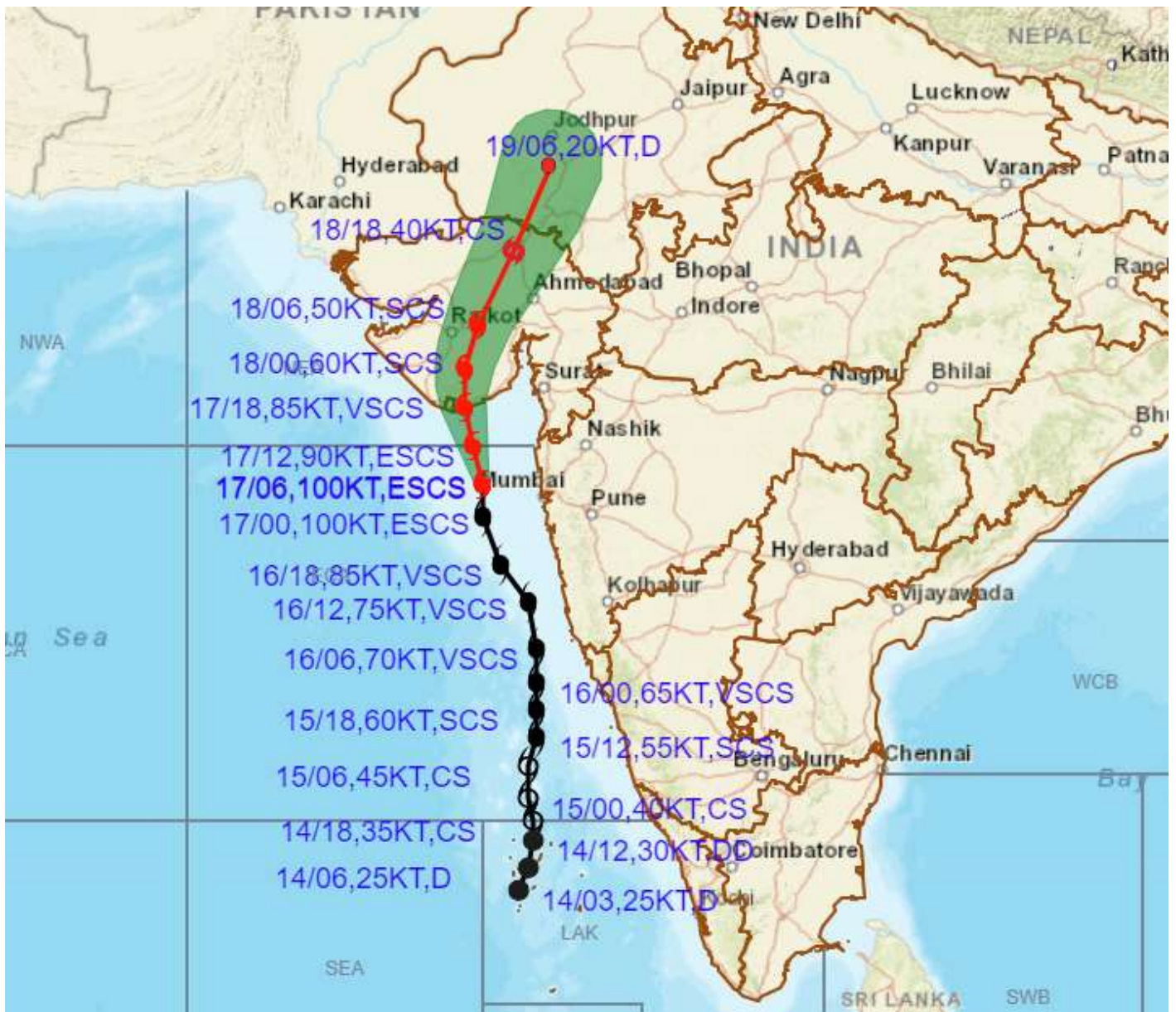
DATE/TIME (IST) OF OBSERVATION	BASED ON 17-05-2021 (1730 HRS IST)
LOCATION LATITUDE/LONGITUDE	THE EXTREMELY SEVERE CYCLONIC STORM 'TAUKTAE' LAY CENTRED AT 1730 HRS IST OF TODAY, THE 17TH MAY 2021 OVER NORTHEAST & ADJOINING EASTCENTRAL ARABIAN SEA, NEAR LAT. 20.1°N AND LONG. 71.3°E ABOUT <ul style="list-style-type: none">• 195 KM WEST-NORTHWEST OF MUMBAI (MAHARASHTRA),• 80 SOUTH-SOUTHEAST OF DIU
CURRENT INTENSITY NEAR CENTRE	170-180 KMPH GUSTING TO 200 KMPH
PAST MOVEMENT	EXTREMELY SEVERE CYCLONIC STORM 'TAUKTAE' MOVED NORTH-NORTHWESTWARDS WITH A SPEED OF 17 KMPH DURING PAST 06 HOURS
FORECAST MOVEMENT, INTENSITY AND LANDFALL	IT IS LIKELY TO MOVE NORTH-NORTHWESTWARDS AND CROSS GUJARAT COAST BETWEEN PORBANDAR & MAHUVA (BHAHVNAGAR DISTRICT) EAST OF DIU DURING THE NIGHT (2000- 2300 IST) OF 17 TH MAY WITH MAXIMUM SUSTAINED WIND SPEED OF 155-165 KMPH GUSTING TO 185 KMPH.
FORECAST RAINFALL	LIGHT TO MODERATE RAINFALL AT MOST PLACES WITH HEAVY TO VERY HEAVY FALLS AT A FEW PLACES AND EXTREMELY HEAVY FALLS AT ISOLATED PLACES VERY LIKELY OVER SAURASHTRA, DIU AND ADJOINING GUJARAT REGION ON 17 TH & HEAVY TO VERY HEAVY FALLS AT A FEW PLACES OVER GUJARAT REGION AND HEAVY TO VERY HEAVY FALLS AT ISOLATED PLACES OVER SAURASHTRA ON 18 TH MAY. ISOLATED HEAVY TO VERY HEAVY RAINFALL ALSO LIKELY OVER KUTCH DURING THE SAME PERIOD.
FORECAST WIND SPEED (KMPH)	GALE WIND SPEED REACHING 70-80 KMPH GUSTING TO 90 KMPH IS PREVAILING ALONG AND OFF SOUTH GUJARAT & DAMAN AND DIU COASTS. IT IS LIKELY TO INCREASE BECOMING GALE WINDS SPEED REACHING 155-165 KMPH GUSTING TO 185 KMPH ALONG & OFF GUJARAT COAST (AMRELI, BHAVNAGAR) JUNAGARH, GIR SOMNATH AND 120 -

	140 KMPH GUSTING TO 165 KMPH OVER BHARUCH, ANAND, SOUTH AHMEDABAD, BOTAD, 90 -100 KMPH GUSTING TO 120 KMPH OVER DEVBHOOMI DWARKA, JAMNAGAR, PORBANDAR, RAJKOT, MORBI, KHEDA DISTRICTS OF GUJARAT FROM TODAY EVENING TILL 18 TH EARLY MORNING. GALE WINDS SPEED REACHING 80-90 KMPH GUSTING TO 100 KMPH LIKELY TO PREVAIL ALONG & OFF DADRA, NAGAR HAVELI, DAMAN, VALSAD, NAVSARI, SURAT, SURENDRANAGAR, DISTRICTS FROM 17 TH EVENING TILL 18 TH MORNING.
FORECAST STORM SURGE	TIDAL WAVE ABOVE ASTRONOMICAL TIDE IS LIKELY TO INUNDATE COASTAL AREAS AS PER DETAILS BELOW: ABOUT 3 - 4 METER (M) OVER ANAND & AMRELI, GIR SOMNATH, DIU, BHAVNAGAR, 2-3 M OVER BHARUCH, SOUTHERN PARTS OF AHMEDABAD, 1-2 M OVER SURAT, NAVSARI, VALSAD, AND 0.5 – 1M OVER THE REMAINING COASTAL DISTRICTS OF GUJARAT DURING THE TIME OF LANDFALL.
REALISED WEATHER COASTAL MAHARASHTRA	HEAVY TO VERY HEAVY RAINFALL IS CONTINUING OVER NORTH KONKAN INCLUDING MUMBAI. IT WILL CONTINUE FOR NEXT 12 HRS, <u>RAINFALL REPORTED DURING 0830 TO 1430 HOURS IST OF TODAY:</u> MUMBAI (COLABA): 18.9 CM, SANTACRUZ: 19.4 CM, ALIBAG:10.5 CM AND DAHANU: 7.3 CM <u>WIND REPORTED AT 1730 HOURS IST OF TODAY:</u> ALIBAGH: 78 KMPH, SANTACRUZ: 46 KMPH, DAHANU: 31 KMPH
REALISED WEATHER GUJARAT & DIU	RAINFALL HAS COMMENCED OVER COASTAL AREAS OF GUJARAT & DIU. IT IS LIKELY TO INCREASE FROM TONIGHT. <u>WIND REPORTED AT 1730 HOURS IST OF TODAY:</u> DIU: 40 KMPH, PORBANDAR: 30 KMPH, BHAVNAGAR: 26 KMPH AND DWARKA: 22 KMPH





OBSERVED AND FORECAST TRACK ALONGWITH CONE OF UNCERTAINTY OF EXTREMELY SEVERE CYCLONIC STORM "TAUKTAE" OVER EASTCENTRAL ARABIAN SEA BASED ON 0600 UTC OF 17TH MAY, 2021

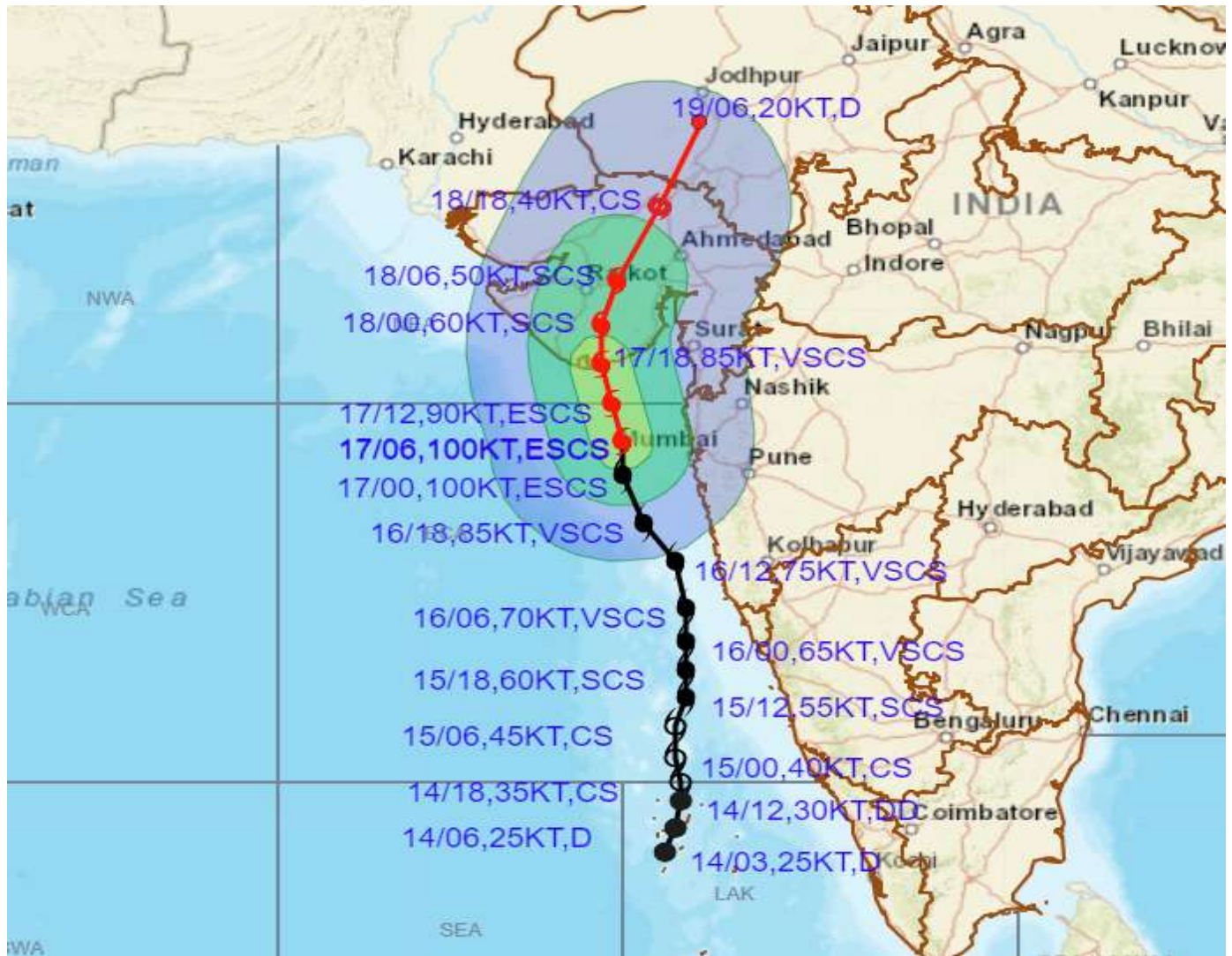


DATE/TIME IN UTC
 IST=UTC + 0530
 L: LOW PRESSURE AREA
 WML: WELL MARKED LOW PRESSURE AREA
 D: DEPRESSION (17-27 KT)
 DD: DEEP DEPRESSION (28-33 KT)
 CS: CYCLONIC STORM (34-47 KT)
 SCS: SEVERE CYCLONIC STORM (48-63KT)
 VSCS: VERY SEVERE CYCLONIC STORM (64-89 KT)
 ESCS: EXTREMELY SEVERE CYCLONIC STORM (90-119 KT)
 SuCS: SUPER CYCLONIC STORM (\geq 120 KT)

- LESS THAN 34 KT
- 34-47 KT
- \geq 48 KT
- OBSERVED TRACK
- FORECAST TRACK
- CONE OF UNCERTAINTY



OBSERVED AND FORECAST TRACK ALONGWITH CONE OF UNCERTAINTY OF EXTREMELY SEVERE CYCLONIC STORM "TAUKTAE" OVER EASTCENTRAL ARABIAN SEA BASED ON 0600 UTC OF 17TH MAY, 2021



DATE/TIME IN UTC

IST=UTC + 0530

L: LOW PRESSURE AREA

WML: WELL MARKED LOW PRESSURE AREA

D: DEPRESSION (17-27 KT)

DD: DEEP DEPRESSION (28-33 KT)

CS: CYCLONIC STORM (34-47 KT)

SCS: SEVERE CYCLONIC STORM (48-63KT)

VSCS: VERY SEVERE CYCLONIC STORM (64-89 KT)

ESCS: EXTREMELY SEVERE CYCLONIC STORM (90-119 KT)

SuCS: SUPER CYCLONIC STORM (≥ 120 KT)

● LESS THAN 34 KT

○ 34-47 KT

● ≥ 48 KT

— OBSERVED TRACK

— FORECAST TRACK

○ CONE OF UNCERTAINTY

AREA OF MAXIMUM SUSTAINED WIND SPEED:

■ 28-33 KT (52-61 KMPH)

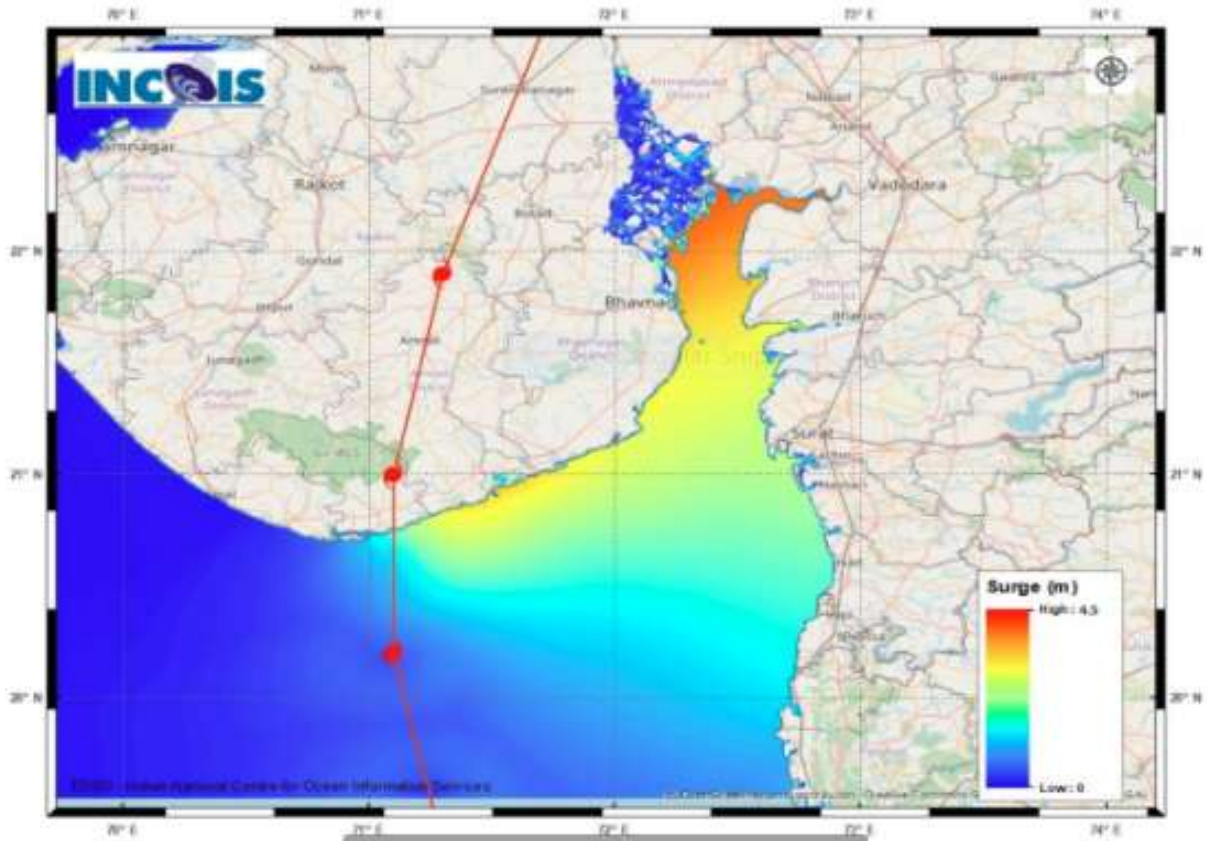
■ 34-49 KT (62-91 KMPH)

■ 50-63 KT (92-117 KMPH)

■ ≥ 64 KT (≥118 KMPH)

IMPACT OVER THE SEA

MSW (knot/kmph)	Impact	Action
28-33 (52-61)	Very rough seas	Total suspension of fishing operations
34-49 (62-91)	High to very high seas	Total suspension of fishing operations
50-63 (92-117)	Very high seas	Total suspension of fishing operations
≥ 64 (≥118)	Phenomenal	Total suspension of fishing operations



STORM SURGE GUIDANCE FROM INCOIS BASED ON 0530 HRS IST OBSERVATIONS

STORM SURGE HEIGHT INFORMATION:Open with 

* The below listed surge heights are over and above ast

MANDAL/TALUK	DISTRICT	STATE / UNION TERRITORY	NEAREST PLACE OF HABITATION	STORM SURGE (m) *	EXPECTED INUNDATION EXTENT (km)
Khambhat	Anand	Gujarat	Mitli	3.0-4.5	Upto 9.15
Bhavnagar	Bhavnagar	Gujarat	Narbad	3.0-4.2	Upto 2.90
Rajula	Amreli	Gujarat	Patva	2.1-3.8	Upto 1.08
Mundra	Bhavnagar	Gujarat	Vadgam	3.5-3.7	Upto 1.36
Jafarabad	Amreli	Gujarat	Rohisa	1.9-3.5	Upto 0.23
Vagra	Bharuch	Gujarat	Harinagar	1.8-3.4	Upto 0.88
Mahuva	Bhavnagar	Gujarat	Gadhada	1.6-3.3	Upto 0.31
Talaja	Bhavnagar	Gujarat	Talaja	1.6-3.2	Upto 0.39
Bharuch	Bharuch	Gujarat	Kasva	1.9-3	Upto 0.19
Hansot Mahal	Bharuch	Gujarat	Kantivajal	1.7-3	Upto 4.41
Olpad	Surat	Gujarat	Vansva	2.1-2.7	Upto 1.16
Una	Janagadh	Gujarat	Una	0.8-2.7	Upto 0.56
Hazira	Surat	Gujarat	Haira Ina (ina)	1.8-2.6	Upto 1.33
Chorasi	Surat	Gujarat	Bhimpur	0.8-2.5	Upto 2.31
Navsari	Navsari	Gujarat	Borsi	1.5-2.4	Upto 0.64
Gandevi	Navsari	Gujarat	Mendhar	1.9-2.1	Upto 1.26
Valsad	Valsad	Gujarat	Malvan	1.6-2.1	Upto 0.51
Daman	Daman	Daman and Diu	Daman	1.4-1.8	Upto 0.12
Umargam	Valsad	Gujarat	Umargam	1.6-1.7	Upto 0.21
Dahanu	Palghar	Maharashtra	Narpad	0.7-1.5	Upto 1.05
Palghar	Palghar	Maharashtra	Akkarpatti	0.5-1.2	Upto 0.75
Diu	Diu	Daman and Diu	Diu	0.9-1.1	Upto 0.32
Vasai	Palghar	Maharashtra	Jalsar	0.6-1.1	Upto 1.13
Wada	Thane	Maharashtra	Juchandra	1.1-1.1	Upto 0.21
Borsad	Anand	Gujarat	Tithor	1.4-1.5	Upto 0.52
Alibag	Raigarh	Maharashtra	Ranjankhar Davali	0.3-0.9	Upto 1.90
Bombay	Mumbai City	Maharashtra	Greater Bombay	0.7-0.9	Nil
Kodinar	Gir Somnath	Gujarat	Chhara	0.4-0.8	Upto 0.32
Panvel	Raigarh	Maharashtra	Gavhan	0.7-0.8	Upto 0.72
Uran	Raigarh	Maharashtra	Jasai	0.7-0.8	Upto 2.40
Murud	Raigarh	Maharashtra	Borli	0.5-0.7	Upto 0.21
Dapoli	Ratnagiri	Maharashtra	Tadachukond	0.4-0.5	Upto 0.11
Mandangarh	Ratnagiri	Maharashtra	Danda	0.4-0.5	Nil

HEAVY RAINFALL WARNING FOR GUJARAT STATE FOR 17TH AND 18TH MAY



WIND WARNING FOR GUJARAT STATE FROM 17TH NIGHT TO 18TH MAY

