



**India Meteorological Department  
(Ministry of Earth Sciences)**

**HOURLY UPDATE ON EXTREMELY SEVERE CYCLONIC STORM 'TAUKTAE'  
OVER EASTCENTRAL & ADJOINING NORTHEAST ARABIAN SEA**

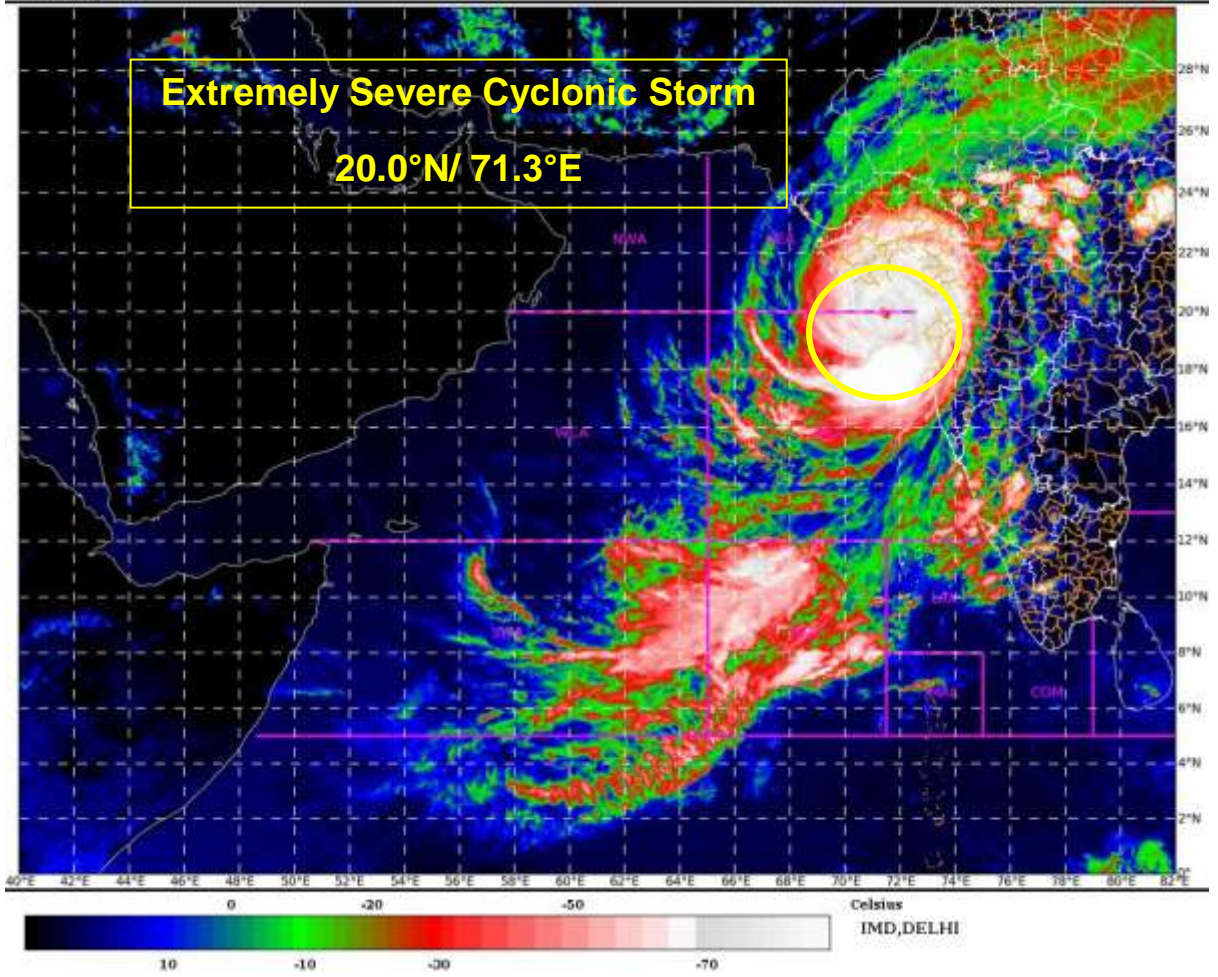
**BULLETIN NO. 07**

DATE: 17-05-2021

TIME OF ISSUE: 1730 HRS IST

<b>DATE/TIME (IST) OF OBSERVATION</b>	<b>BASED ON 17-05-2021 (1630 HRS IST)</b>
LOCATION LATITUDE/LONGITUDE	THE EXTREMELY SEVERE CYCLONIC STORM 'TAUKTAE' LAY CENTRED AT 1630 HRS IST OF TODAY, THE 17TH MAY 2021 OVER EASTCENTRAL & ADJOINING NORTHEAST ARABIAN SEA, NEAR LAT.20.0°N AND LONG. 71.3°E ABOUT <ul style="list-style-type: none"><li>• 190 KM WEST-NORTHWEST OF MUMBAI (MAHARASHTRA),</li><li>• 90 SOUTHEAST OF DIU</li></ul>
CURRENT INTENSITY NEAR CENTRE	170-180 KMPH GUSTING TO 200 KMPH
PAST MOVEMENT	EXTREMELY SEVERE CYCLONIC STORM 'TAUKTAE' MOVED NORTH-NORTHWESTWARDS WITH A SPEED OF 17 KMPH DURING PAST 06 HOURS
FORECAST MOVEMENT, INTENSITY AND LANDFALL	IT IS LIKELY TO MOVE NORTH-NORTHWESTWARDS AND CROSS GUJARAT COAST BETWEEN PORBANDAR & MAHUVA (BHAHVNAGAR DISTRICT) EAST OF DIU DURING THE NIGHT (2000- 2300 IST) OF 17 <sup>TH</sup> MAY WITH MAXIMUM SUSTAINED WIND SPEED OF 155-165 KMPH GUSTING TO 185 KMPH.
FORECAST RAINFALL	LIGHT TO MODERATE RAINFALL AT MOST PLACES WITH HEAVY TO VERY HEAVY FALLS AT A FEW PLACES AND EXTREMELY HEAVY FALLS AT ISOLATED PLACES VERY LIKELY OVER SAURASHTRA, DIU AND ADJOINING GUJARAT REGION ON 17 <sup>TH</sup> & HEAVY TO VERY HEAVY FALLS AT A FEW PLACES OVER GUJARAT REGION AND HEAVY TO VERY HEAVY FALLS AT ISOLATED PLACES OVER SAURASHTRA ON 18 <sup>TH</sup> MAY. ISOLATED HEAVY TO VERY HEAVY RAINFALL ALSO LIKELY OVER KUTCH DURING THE SAME PERIOD.
FORECAST WIND SPEED (KMPH)	GALE WIND SPEED REACHING 70-80 KMPH GUSTING TO 90 KMPH IS PREVAILING ALONG AND OFF SOUTH GUJARAT & DAMAN AND DIU COASTS. IT IS LIKELY TO INCREASE BECOMING GALE WINDS SPEED REACHING 155-165 KMPH GUSTING TO 185 KMPH ALONG & OFF GUJARAT COAST (AMRELI, BHAVNAGAR) JUNAGARH, GIR SOMNATH AND 120 -

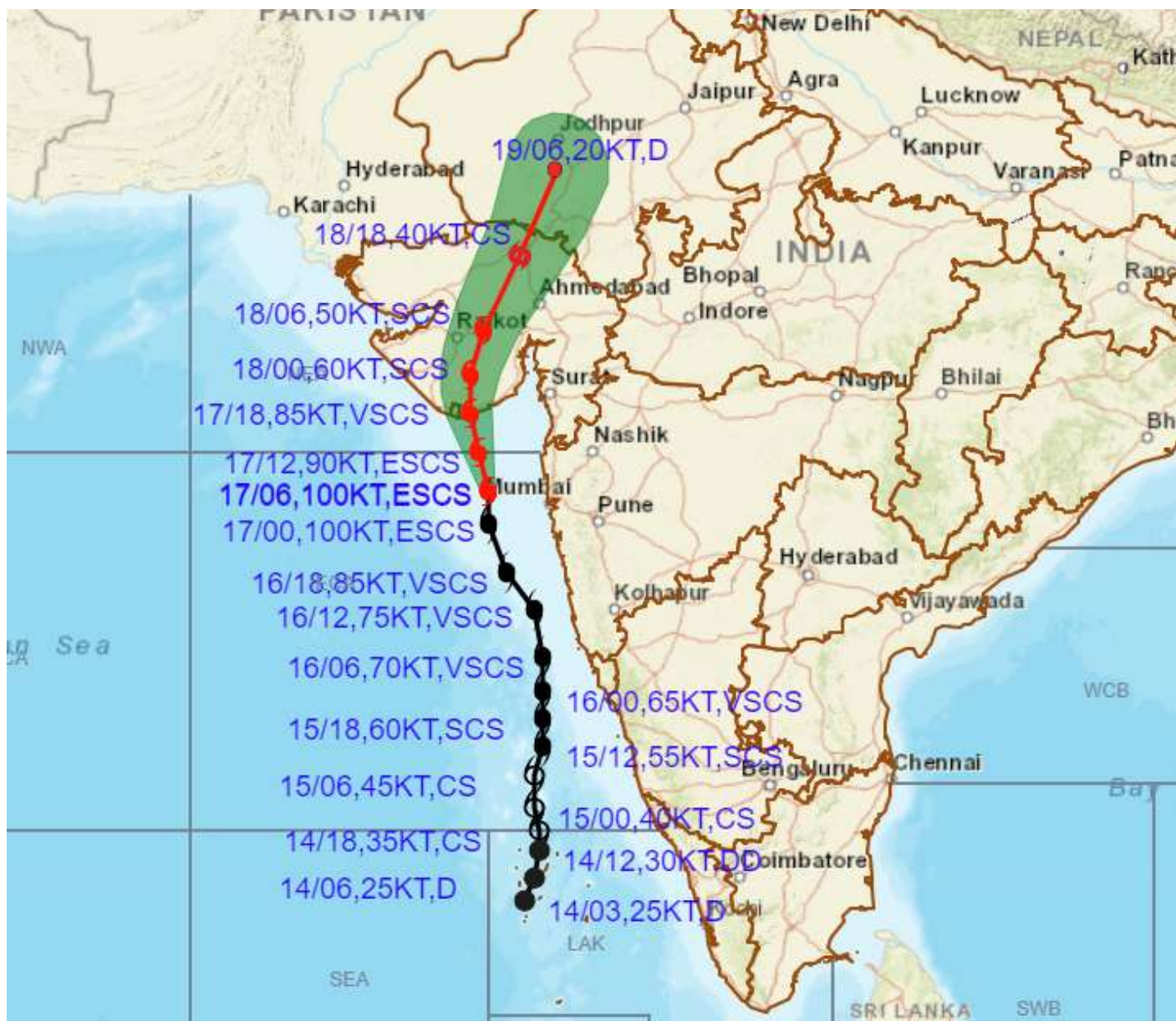
	140 KMPH GUSTING TO 165 KMPH OVER BHARUCH, ANAND, SOUTH AHMEDABAD, BOTAD, 90 -100 KMPH GUSTING TO 120 KMPH OVER DEVBHOOMI DWARKA, JAMNAGAR, PORBANDAR, RAJKOT, MORBI, KHEDA DISTRICTS OF GUJARAT FROM TODAY EVENING TILL 18 <sup>TH</sup> EARLY MORNING. GALE WINDS SPEED REACHING 80-90 KMPH GUSTING TO 100 KMPH LIKELY TO PREVAIL ALONG & OFF DADRA, NAGAR HAVELI, DAMAN, VALSAD, NAVSARI, SURAT, SURENDRANAGAR, DISTRICTS FROM 17 <sup>TH</sup> EVENING TILL 18 <sup>TH</sup> MORNING.
FORECAST STORM SURGE	TIDAL WAVE ABOVE ASTRONOMICAL TIDE IS LIKELY TO INUNDATE COASTAL AREAS AS PER DETAILS BELOW: <b>ABOUT 3 - 4 METER (M) OVER ANAND &amp; AMRELI, GIR SOMNATH, DIU, BHAVNAGAR,</b> 2-3 M OVER BHARUCH, SOUTHERN PARTS OF AHMEDABAD, 1-2 M OVER SURAT, NAVSARI, VALSAD, AND 0.5 – 1M OVER THE REMAINING COASTAL DISTRICTS OF GUJARAT DURING THE TIME OF LANDFALL.
<b>REALISED WEATHER</b>  COASTAL MAHARASHTRA	HEAVY TO VERY HEAVY RAINFALL IS CONTINUING OVER NORTH KONKAN INCLUDING MUMBAI. IT WILL CONTINUE FOR NEXT 12 HRS, <b><u>RAINFALL REPORTED DURING 0830 TO 1430 HOURS IST OF TODAY:</u></b> MUMBAI (COLABA): 17.9 CM, SANTACRUZ: 16.9 CM, JUHU AIRPORT: 21.5 CM, RAM MANDIR: 17.2 CM, MIRA ROAD: 13.0 CM, ALIBAGH:9.9 CM AND DHANU:5.0 CM
<b>REALISED WEATHER</b>  GUJARAT & DIU	RAINFALL HAS COMMENCED OVER COASTAL AREAS OF GUJARAT & DIU. IT IS LIKELY TO INCREASE FROM TONIGHT. <b><u>WIND REPORTED AT 1630 HOURS IST OF TODAY:</u></b> <b>PORBANDAR: 40 KMPH, DIU: 37 KMPH, BHAVNAGAR: 29 KMPH AND DWARKA: 22 KMPH</b>







**OBSERVED AND FORECAST TRACK ALONGWITH CONE OF UNCERTAINTY OF EXTREMELY SEVERE CYCLONIC STORM "TAUKTAE" OVER EASTCENTRAL ARABIAN SEA BASED ON 0600 UTC OF 17<sup>TH</sup> MAY, 2021**



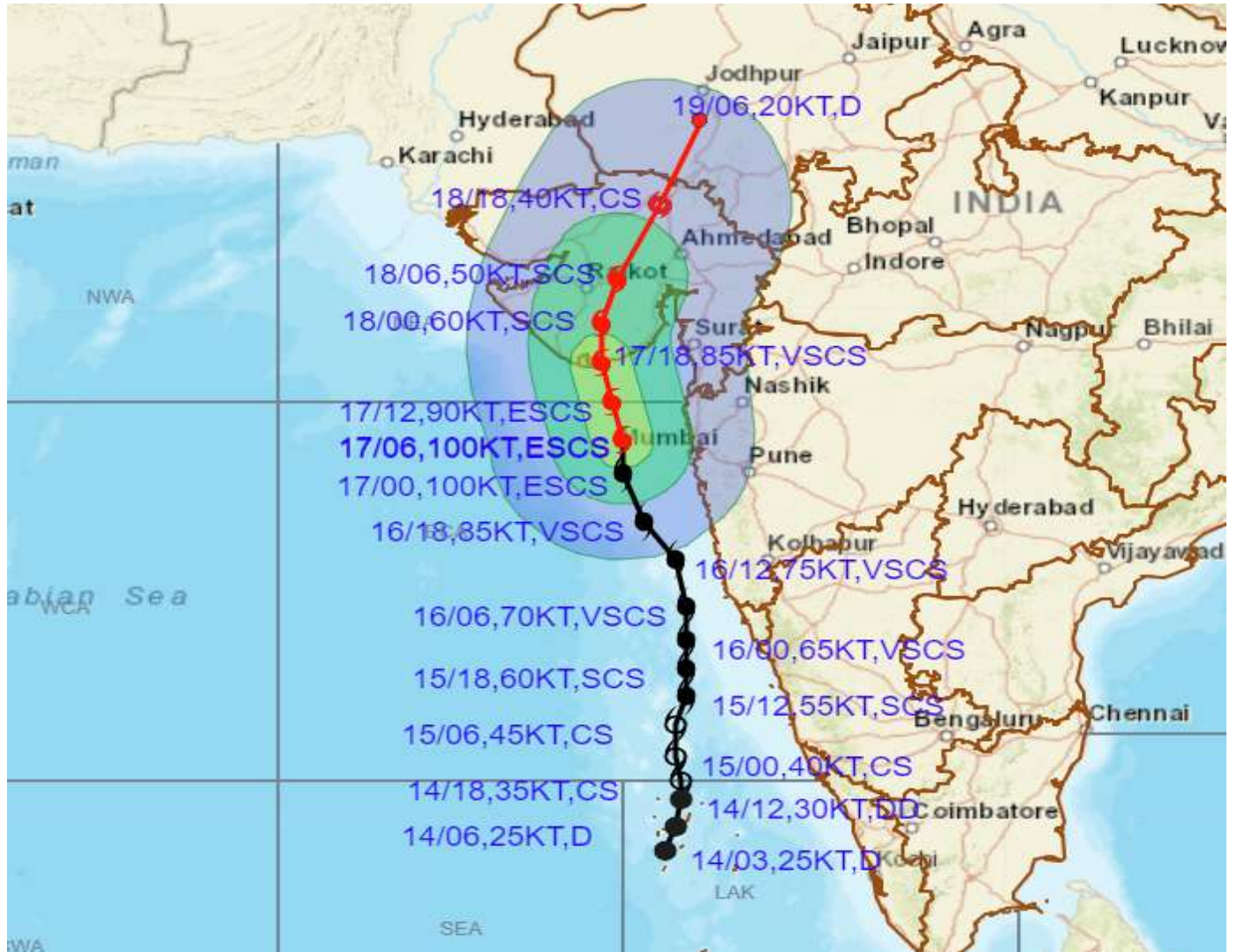
DATE/TIME IN UTC  
 IST=UTC + 0530  
 L: LOW PRESSURE AREA  
 WML: WELL MARKED LOW PRESSURE AREA  
 D: DEPRESSION (17-27 KT)  
 DD: DEEP DEPRESSION (28-33 KT)  
 CS: CYCLONIC STORM (34-47 KT)  
 SCS: SEVERE CYCLONIC STORM (48-63KT)  
 VSCS: VERY SEVERE CYCLONIC STORM (64-89 KT)  
 ESCS: EXTREMELY SEVERE CYCLONIC STORM (90-119 KT)  
 SuCS: SUPER CYCLONIC STORM ( $\geq$  120 KT)

- LESS THAN 34 KT
- 34-47 KT
- $\geq$  48 KT
- OBSERVED TRACK
- FORECAST TRACK
- CONE OF UNCERTAINTY





## OBSERVED AND FORECAST TRACK ALONGWITH CONE OF UNCERTAINTY OF EXTREMELY SEVERE CYCLONIC STORM "TAUKTAE" OVER EASTCENTRAL ARABIAN SEA BASED ON 0600 UTC OF 17<sup>TH</sup> MAY, 2021

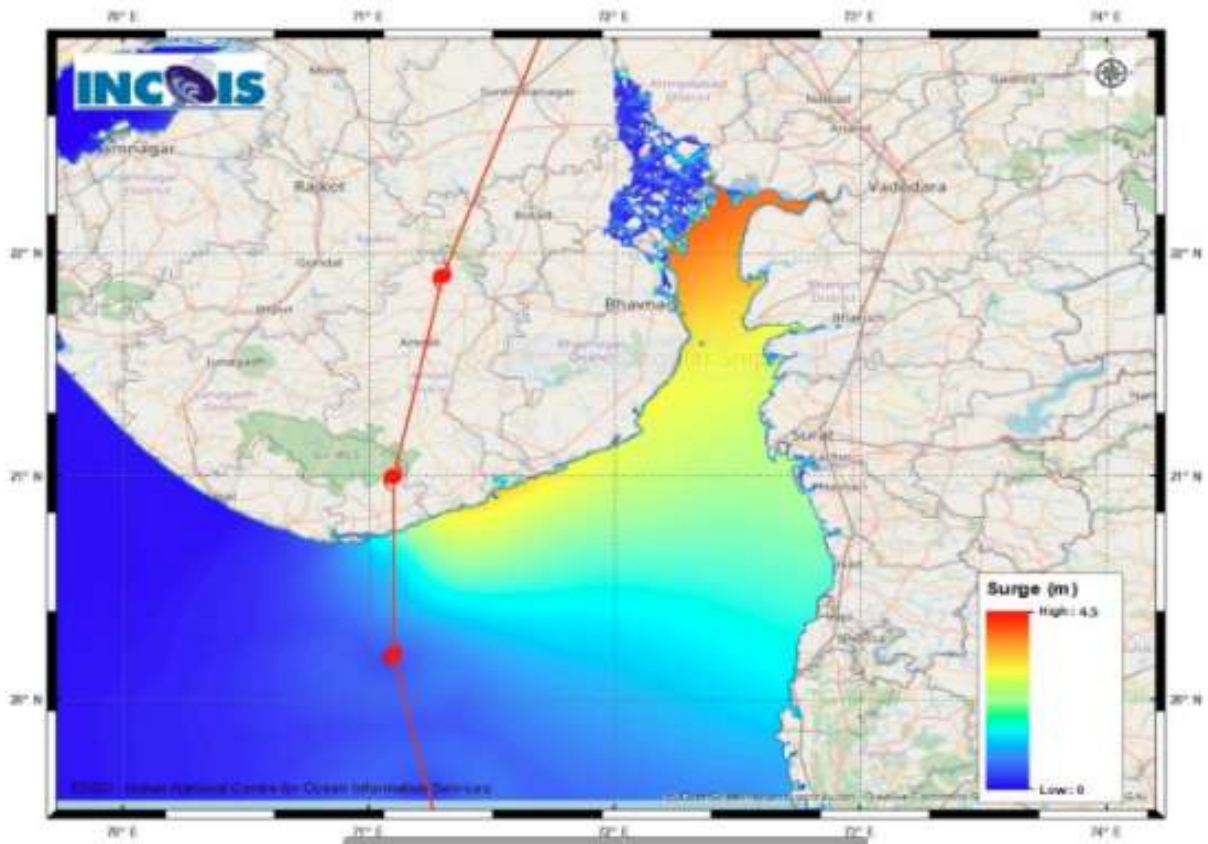


DATE/TIME IN UTC  
 IST=UTC + 0530  
 L: LOW PRESSURE AREA  
 WML: WELL MARKED LOW PRESSURE AREA  
 D: DEPRESSION (17-27 KT)  
 DD: DEEP DEPRESSION (28-33 KT)  
 CS: CYCLONIC STORM (34-47 KT)  
 SCS: SEVERE CYCLONIC STORM (48-63KT)  
 VSCS: VERY SEVERE CYCLONIC STORM (64-89 KT)  
 ESCS: EXTREMELY SEVERE CYCLONIC STORM (90-119 KT)  
 SuCS: SUPER CYCLONIC STORM ( $\geq$  120 KT)

● LESS THAN 34 KT  
 ○ 34-47 KT  
 ●  $\geq$  48 KT  
 — OBSERVED TRACK  
 — FORECAST TRACK  
 — CONE OF UNCERTAINTY  
 AREA OF MAXIMUM SUSTAINED WIND SPEED:  
 ■ 28-33 KT (52-61 KMPH)  
 ■ 34-49 KT (62-91 KMPH)  
 ■ 50-63 KT (92-117 KMPH)  
 ■  $\geq$  64 KT ( $\geq$ 118 KMPH)

### IMPACT OVER THE SEA

MSW (knot/kmph)	Impact	Action
28-33 (52-61)	Very rough seas	Total suspension of fishing operations
34-49 (62-91)	High to very high seas	Total suspension of fishing operations
50-63 (92-117)	Very high seas	Total suspension of fishing operations
$\geq$ 64 ( $\geq$ 118)	Phenomenal	Total suspension of fishing operations



STORM SURGE GUIDANCE FROM INCOIS BASED ON 0530 HRS IST OBSERVATIONS

**STORM SURGE HEIGHT INFORMATION:**

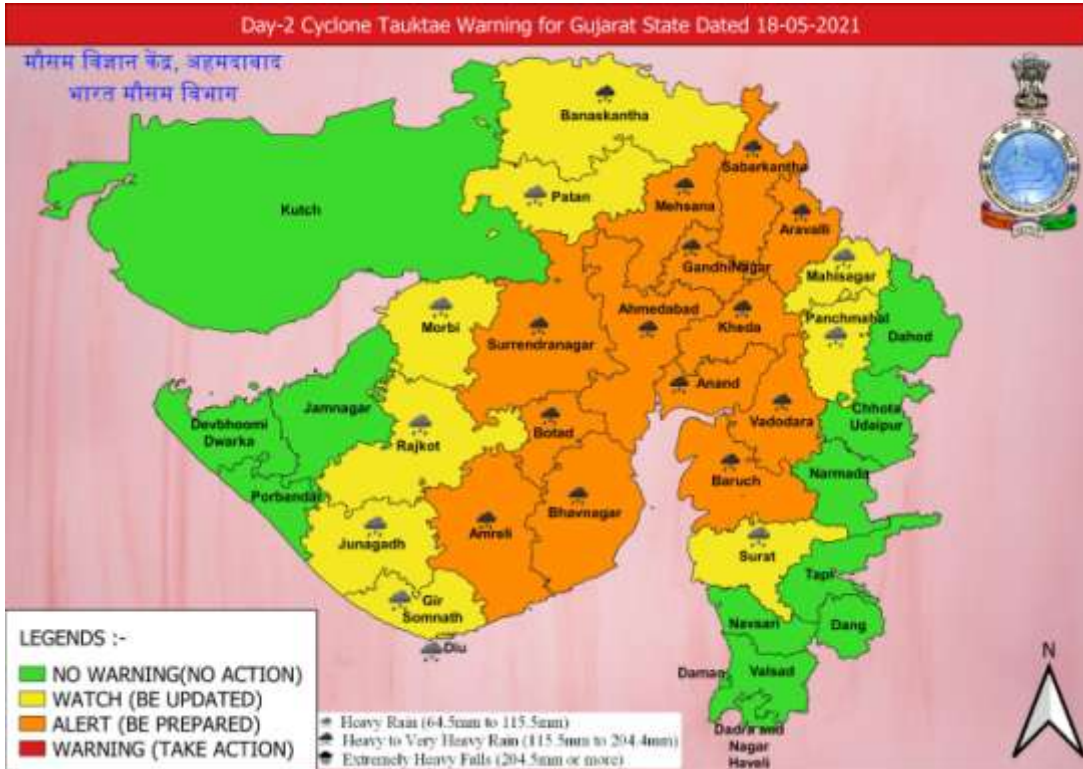
Open with ▼

\* The below listed surge heights are over and above actual surge height.

MANDAL/TALUK	DISTRICT	STATE / UNION TERRITORY	NEAREST PLACE OF HABITATION	STORM SURGE (m) *	EXPECTED INUNDATION EXTENT (km)
Khambhat	Anand	Gujarat	Mitli	3.0-4.5	Upto 9.15
Bhavnagar	Bhavnagar	Gujarat	Narbad	3.0-4.2	Upto 2.90
Rajula	Amreli	Gujarat	Patva	2.1-3.8	Upto 1.08
Mundra	Bhavnagar	Gujarat	Vadgam	3.5-3.7	Upto 1.36
Jafarabad	Amreli	Gujarat	Rohisa	1.9-3.5	Upto 0.23
Vagra	Bharuch	Gujarat	Harinagar	1.8-3.4	Upto 0.88
Mahuva	Bhavnagar	Gujarat	Gadhada	1.6-3.3	Upto 0.31
Talaja	Bhavnagar	Gujarat	Talaja	1.6-3.2	Upto 0.39
Bharuch	Bharuch	Gujarat	Kasva	1.9-3	Upto 0.19
Hansot Mahal	Bharuch	Gujarat	Kantivajal	1.7-3	Upto 4.41
Olpad	Surat	Gujarat	Vansva	2.1-2.7	Upto 1.16
Una	Junagadh	Gujarat	Una	0.8-2.7	Upto 0.56
Hazira	Surat	Gujarat	Haira Ina (ina)	1.8-2.6	Upto 1.33
Chorasi	Surat	Gujarat	Bhimpor	0.8-2.5	Upto 2.31
Navsari	Navsari	Gujarat	Borsi	1.5-2.4	Upto 0.64
Gandevi	Navsari	Gujarat	Mendhar	1.9-2.1	Upto 1.26
Valsad	Valsad	Gujarat	Malvan	1.6-2.1	Upto 0.51
Daman	Daman	Daman and Diu	Daman	1.4-1.8	Upto 0.12
Umargam	Valsad	Gujarat	Umargam	1.6-1.7	Upto 0.21
Dahanu	Palghar	Maharashtra	Narpad	0.7-1.5	Upto 1.05
Palghar	Palghar	Maharashtra	Akkarpatti	0.5-1.2	Upto 0.75
Diu	Diu	Daman and Diu	Diu	0.9-1.1	Upto 0.32
Vasai	Palghar	Maharashtra	Jalsar	0.6-1.1	Upto 1.13
Wada	Thane	Maharashtra	Juchandra	1.1-1.1	Upto 0.21
Borsad	Anand	Gujarat	Tithor	1.4-1.5	Upto 0.52
Alibag	Raigarh	Maharashtra	Ranjankhar Davali	0.3-0.9	Upto 1.90
Bombay	Mumbai City	Maharashtra	Greater Bombay	0.7-0.9	Nil
Kodinar	Gir Somnath	Gujarat	Chhara	0.4-0.8	Upto 0.32
Panvel	Raigarh	Maharashtra	Gavhan	0.7-0.8	Upto 0.72
Uran	Raigarh	Maharashtra	Jasai	0.7-0.8	Upto 2.40
Murud	Raigarh	Maharashtra	Borli	0.5-0.7	Upto 0.21
Dapoli	Ratnagiri	Maharashtra	Tadachakond	0.4-0.5	Upto 0.11
Mandangarh	Ratnagiri	Maharashtra	Danda	0.4-0.5	Nil



## HEAVY RAINFALL WARNING FOR GUJARAT STATE FOR 17<sup>TH</sup> AND 18<sup>TH</sup> MAY





## WIND WARNING FOR GUJARAT STATE FROM 17<sup>TH</sup> NIGHT TO 18<sup>TH</sup> MAY

