



**India Meteorological Department  
(Ministry of Earth Sciences)**

HOURLY UPDATE ON VERY SEVERE CYCLONIC STORM '**TAUKTAE**' OVER  
NORTHEAST ARABIAN SEA

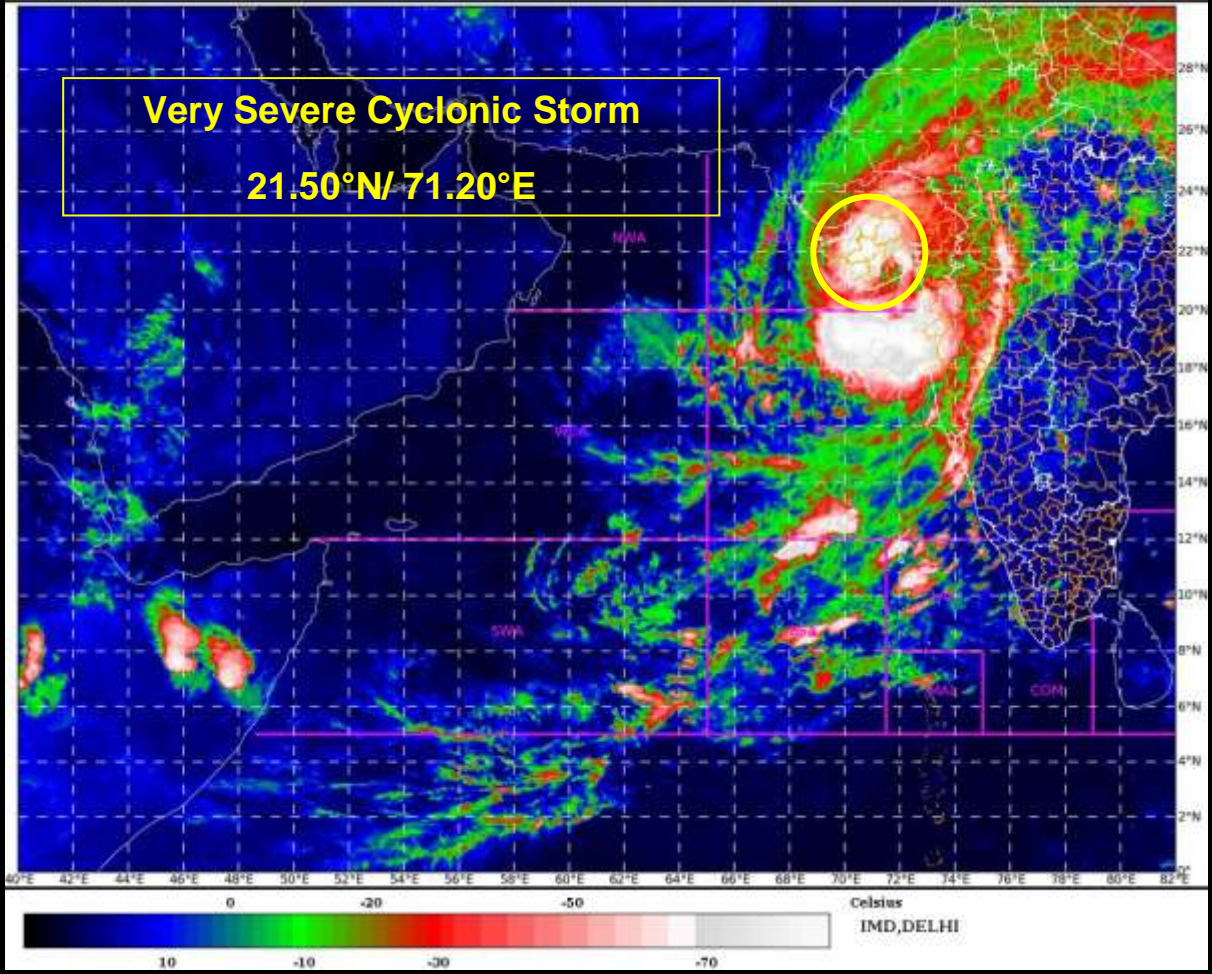
**BULLETIN NO. 20**

DATE: 18-05-2021

TIME OF ISSUE: 0630 HRS IST

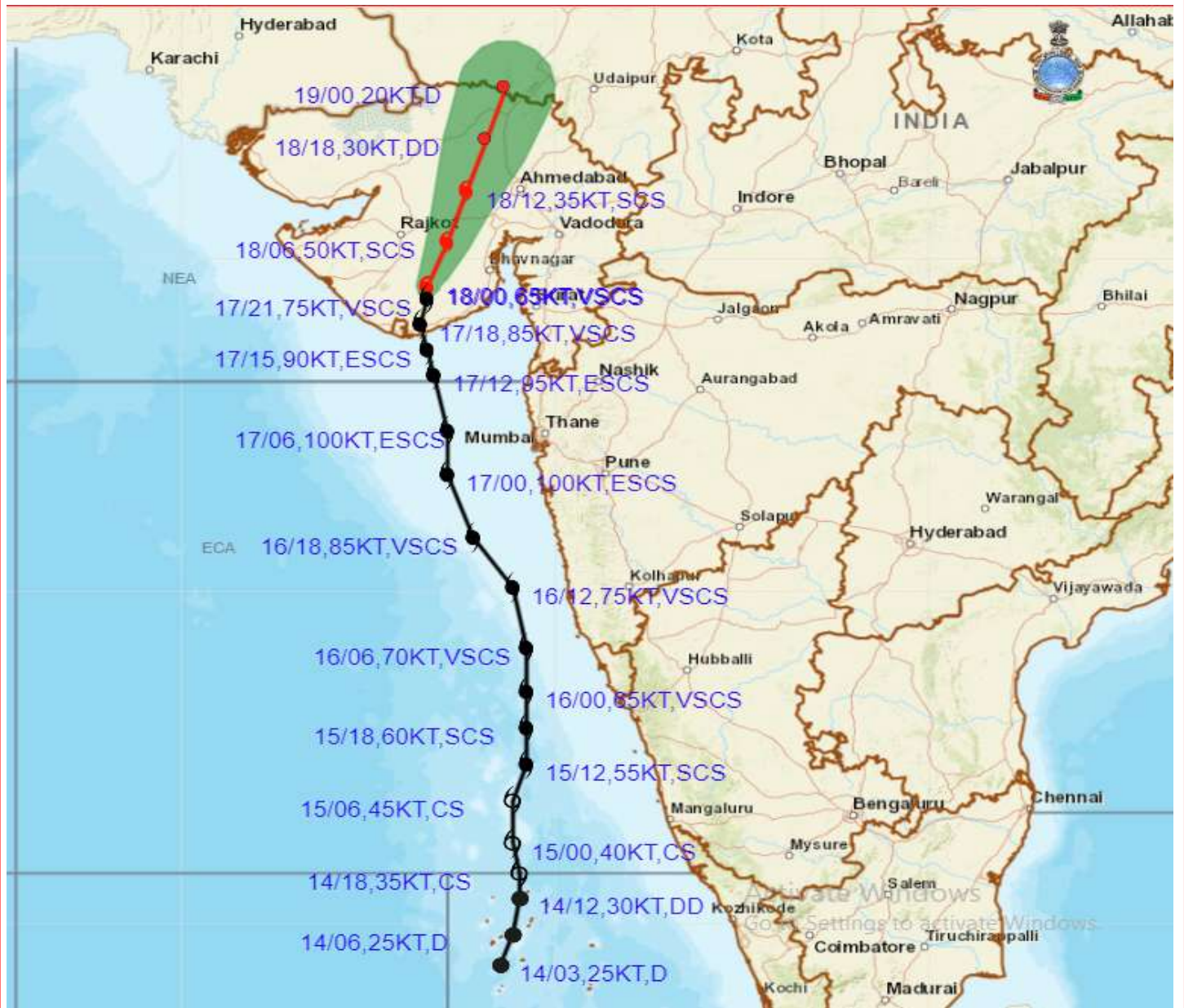
<b>DATE/TIME (IST) OF OBSERVATION</b>	<b>BASED ON 18-05-2021 (0530 HRS IST)</b>
LOCATION LATITUDE/LONGITUDE	THE <b>VERY SEVERE CYCLONIC STORM 'TAUKTAE'</b> LAY CENTRED AT 0530 HRS IST OF 18 <sup>TH</sup> MAY 2021 OVER SAURASHTRA, NEAR LAT. 21.50°N AND LONG. 71.20°E, ABOUT <b>95 KM NORTH-NORTHEAST OF DIU AND 10 KM SOUTH OF AMRELI.</b>
CURRENT INTENSITY NEAR CENTRE	115-125 KMPH GUSTING TO 135 KMPH
PAST MOVEMENT	VERY SEVERE CYCLONIC STORM ' <b>TAUKTAE</b> ' MOVED NORTH-NORTHEAST WARDS WITH A SPEED OF 11 KMPH DURING PAST 06 HOURS.
FORECAST MOVEMENT AND INTENSITY	IT WOULD MOVE NORTH-NORTHEAST WARDS AND WEAKEN GRADUALLY INTO A SEVERE CYCLONIC STORM DURING NEXT 03 HOURS.
FORECAST RAINFALL	LIGHT TO MODERATE RAINFALL AT MOST PLACES WITH HEAVY TO VERY HEAVY FALLS AT A FEW PLACES AND EXTREMELY HEAVY FALLS AT ISOLATED PLACES VERY LIKELY OVER GUJARAT REGION AND HEAVY TO VERY HEAVY FALLS & EXTREMELY HEAVY FALLS AT ISOLATED PLACES VERY LIKELY OVER SAURASHTRA ON 18 <sup>TH</sup> MAY. ISOLATED HEAVY TO VERY HEAVY RAINFALL ALSO LIKELY OVER KUTCH DURING THE SAME PERIOD.
FORECAST WIND SPEED (KMPH)	GALE WINDS SPEED REACHING 115-125 KMPH GUSTING TO 135 KMPH LIKELY TO PREVAIL ALONG & OFF GUJARAT COAST AMRELI, BHAVNAGAR, BOTAD; 100-120 KMPH GUSTING TO 120 KMPH OVER DIU, GIR SOMNATH, JUNAGARH, SURENDRA NAGAR, RAJKOT, KHEDA, BHARUCH, ANAND, SOUTH AHMEDABAD AND 70-80 KMPH GUSTING TO 80 KMPH OVER JAMNAGAR, PORBANDAR, RAJKOT & MORBI TILL MORNING OF 18 <sup>TH</sup> AND GRADUALLY DECREASE THEREAFTER. SQUALLY WIND SPEED REACHING 50-60 KMPH GUSTING TO 70 KMPH LIKELY TO PREVAIL ALONG & OFF DADRA, NAGAR

	HAVELI, DAMAN, VALSAD, NAVSARI, SURAT, SURENDRA NAGAR DISTRICTS AND 40-50 KMPH GUSTING TO 60 KMPH OVER DEVBHOOMI DWARKA & KUTCH TILL MORNING OF 18 <sup>TH</sup> AND GRADUALLY DECREASE THEREAFTER.
FORECAST STORM SURGE	TIDAL WAVE ABOVE ASTRONOMICAL TIDE IS LIKELY TO INUNDATE COASTAL AREAS DURING NEXT 03 HOURS, AS PER DETAILS BELOW: <b>ABOUT 2-3 METER (M) OVER ANAND, AMRELI, GIR SOMNATH, DIU &amp; BHAVNAGAR</b> , 1-2 M OVER BHARUCH, SOUTHERN PARTS OF AHMEDABAD DURING NEXT 03 HOURS.
<b>FORECAST FOR</b>  COASTAL MAHARASHTRA	ISOLATED HEAVY RAINFALL LIKELY OVER NORTH KONKAN DURING NEXT 06 HOURS. GALE WIND SPEED REACHING 50-60 GUSTING TO 70 KMPH ALONG & OFF EXTREME NORTH MAHARASHTRA COAST AND SPEED REACHING 40-50 GUSTING TO 60 KMPH ALONG & OFF REMAINING PARTS OF NORTH MAHARASHTRA COAST DURING NEXT 06 HOURS.
<b>REALISED WEATHER</b>  GUJARAT & DIU	WIND REPORTED AT 0530 HOURS IST OF 18.05.2021: BHAVNAGAR: 74 KMPH, PORBANDAR: 74 KMPH AND AMRELI: 83 KMPH.  RAINFALL IN CM (REPORTED DURING 0830 HOURS IST OF 17.05.2021 TO 0530 HOURS IST OF 18.05.2021): SURAT- 7.7, AMRELI – 10.0 AND BHAVNAGAR- 4.7.





## OBSERVED AND FORECAST TRACK ALONGWITH CONE OF UNCERTAINTY OF VERY SEVERE CYCLONIC STORM "TAUKTAE" OVER SAURASHTRA BASED ON 0000 UTC OF 18<sup>TH</sup> MAY, 2021

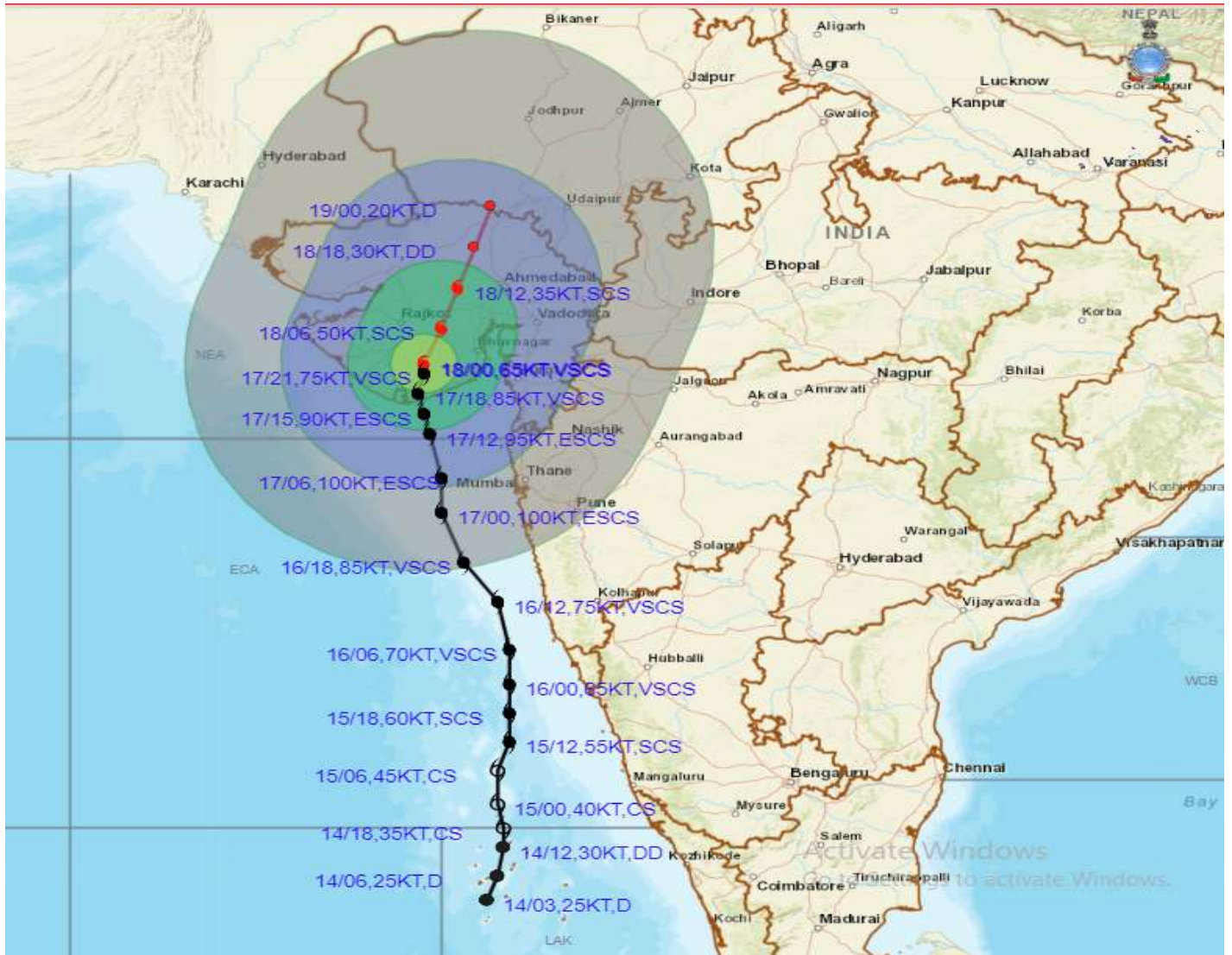


**DATE/TIME IN UTC**  
 IST=UTC + 0530  
**L: LOW PRESSURE AREA**  
**WML: WELL MARKED LOW PRESSURE AREA**  
**D: DEPRESSION (17-27 KT)**  
**DD: DEEP DEPRESSION (28-33 KT)**  
**CS: CYCLONIC STORM (34-47 KT)**  
**SCS: SEVERE CYCLONIC STORM (48-63KT)**  
**VSCS: VERY SEVERE CYCLONIC STORM (64-89 KT)**  
**ESCS: EXTREMELY SEVERE CYCLONIC STORM (90-119 KT)**  
**SuCS: SUPER CYCLONIC STORM ( $\geq$  120 KT)**

- LESS THAN 34 KT
- 34.47 KT
- $\geq$  48 KT
- OBSERVED TRACK
- FORECAST TRACK
- CONE OF UNCERTAINTY



# OBSERVED AND FORECAST TRACK ALONGWITH CONE OF UNCERTAINTY OF VERY SEVERE CYCLONIC STORM "TAUKTAE" OVER SAURASHTRA BASED ON 0000 UTC OF 18<sup>TH</sup> MAY, 2021

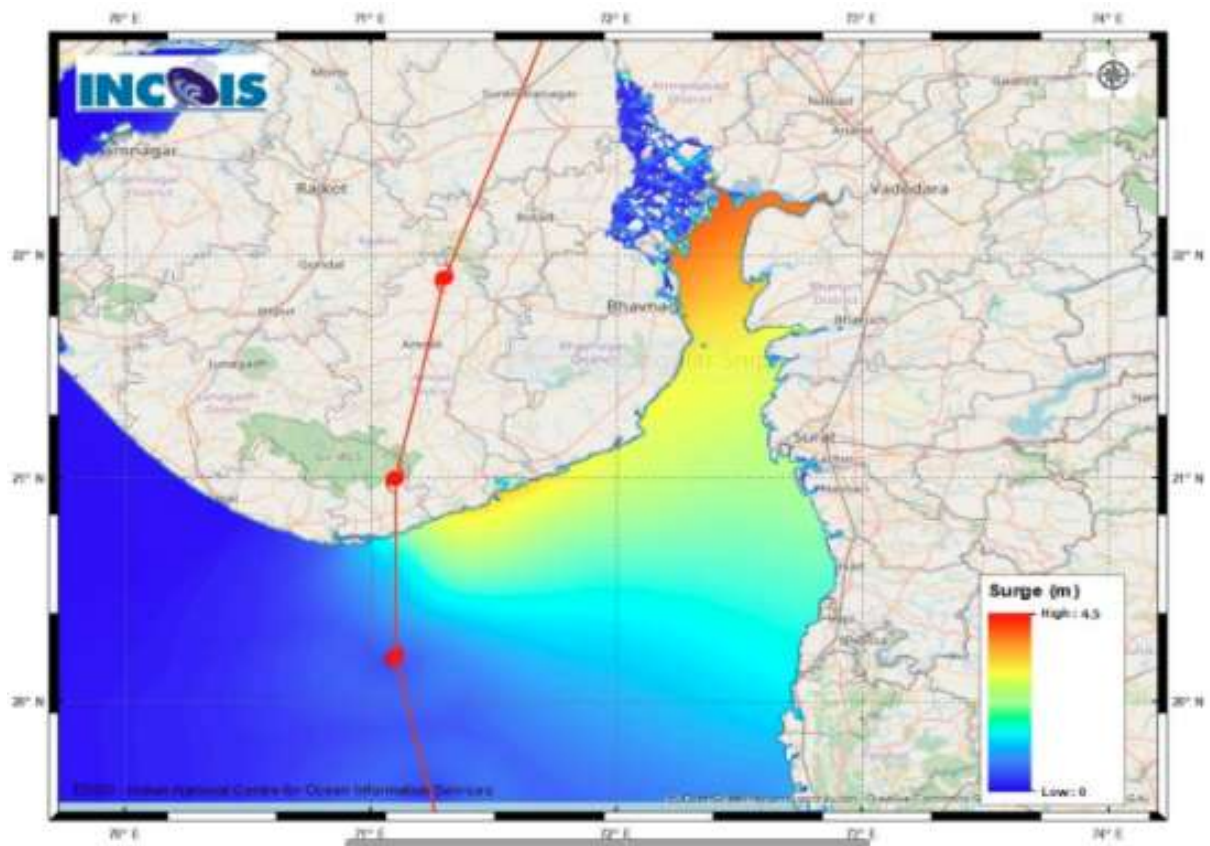


**DATE/TIME IN UTC**  
**IST=UTC + 0530**  
**L: LOW PRESSURE AREA**  
**WML: WELL MARKED LOW PRESSURE AREA**  
**D: DEPRESSION (17-27 KT)**  
**DD: DEEP DEPRESSION (28-33 KT)**  
**CS: CYCLONIC STORM (34-47 KT)**  
**SCS: SEVERE CYCLONIC STORM (48-63KT)**  
**VSCS: VERY SEVERE CYCLONIC STORM (64-89 KT)**  
**ESCS: EXTREMELY SEVERE CYCLONIC STORM (90-119 KT)**  
**SuCS: SUPER CYCLONIC STORM (≥ 120 KT)**

● LESS THAN 34 KT  
 ○ 34-47 KT  
 ● ≥ 48 KT  
 — OBSERVED TRACK  
 — FORECAST TRACK  
 — CONE OF UNCERTAINTY  
**AREA OF MAXIMUM SUSTAINED WIND SPEED:**  
 ■ 28-33 KT (52-61 KMPH)  
 ■ 34-49 KT (62-91 KMPH)  
 ■ 50-63 KT (92-117 KMPH)  
 ■ ≥ 64 (≥118)

### IMPACT OVER THE SEA

MSW (knot/kmph)	Impact	Action
28-33 (52-61)	Very rough seas	Total suspension of fishing operations
34-49 (62-91)	High to very high seas	Total suspension of fishing operations
50-63 (92-117)	Very high seas	Total suspension of fishing operations
≥ 64 (≥118)	Phenomenal	Total suspension of fishing operations



STORM SURGE GUIDANCE FROM INCOIS BASED ON 0530 HRS IST OBSERVATIONS

**STORM SURGE HEIGHT INFORMATION:**

Open with ▼

\* The below listed surge heights are over and above ast

MANDAL/TALUK	DISTRICT	STATE / UNION TERRITORY	NEAREST PLACE OF HABITATION	STORM SURGE (m) *	EXPECTED INUNDATION EXTENT (km)
Khambhat	Anand	Gujarat	Mitli	3.0-4.5	Upto 9.15
Bhavnagar	Bhavnagar	Gujarat	Narbad	3.0-4.2	Upto 2.90
Rajula	Amreli	Gujarat	Patva	2.1-3.8	Upto 1.08
Mundra	Bhavnagar	Gujarat	Vadgam	3.5-3.7	Upto 1.36
Jafarabad	Amreli	Gujarat	Rohisa	1.9-3.5	Upto 0.23
Vagra	Bharuch	Gujarat	Harinagar	1.8-3.4	Upto 0.88
Mahuva	Bhavnagar	Gujarat	Gadhada	1.6-3.3	Upto 0.31
Talaja	Bhavnagar	Gujarat	Talaja	1.6-3.2	Upto 0.39
Bharuch	Bharuch	Gujarat	Kasva	1.9-3	Upto 0.19
Hansot Mahal	Bharuch	Gujarat	Kantivajal	1.7-3	Upto 4.41
Olpad	Surat	Gujarat	Vansva	2.1-2.7	Upto 1.16
Una	Junagadh	Gujarat	Una	0.8-2.7	Upto 0.56
Hazira	Surat	Gujarat	Hajira Ina (ina)	1.8-2.6	Upto 1.33
Chorasi	Surat	Gujarat	Bhimpor	0.8-2.5	Upto 2.31
Navsari	Navsari	Gujarat	Borsi	1.5-2.4	Upto 0.64
Gandevi	Navsari	Gujarat	Mendhar	1.9-2.1	Upto 1.26
Valsad	Valsad	Gujarat	Malvan	1.6-2.1	Upto 0.51
Daman	Daman	Daman and Diu	Daman	1.4-1.8	Upto 0.12
Umargam	Valsad	Gujarat	Umargam	1.6-1.7	Upto 0.21
Dahanu	Palghar	Maharashtra	Narpad	0.7-1.5	Upto 1.05
Palghar	Palghar	Maharashtra	Akkarpatti	0.5-1.2	Upto 0.75
Diu	Diu	Daman and Diu	Diu	0.9-1.1	Upto 0.32
Vasai	Palghar	Maharashtra	Jalsar	0.6-1.1	Upto 1.13
Wada	Thane	Maharashtra	Juchandra	1.1-1.1	Upto 0.21
Borsad	Anand	Gujarat	Tithor	1.4-1.5	Upto 0.52
Alibag	Raigarh	Maharashtra	Ranjankhar Davali	0.3-0.9	Upto 1.90
Bombay	Mumbai City	Maharashtra	Greater Bombay	0.7-0.9	Nil
Kodinar	Gir Somnath	Gujarat	Chhara	0.4-0.8	Upto 0.32
Panvel	Raigarh	Maharashtra	Gavhan	0.7-0.8	Upto 0.72
Uran	Raigarh	Maharashtra	Jasai	0.7-0.8	Upto 2.40
Murud	Raigarh	Maharashtra	Borli	0.5-0.7	Upto 0.21
Dapoli	Ratnagiri	Maharashtra	Tadachakond	0.4-0.5	Upto 0.11
Mandangarh	Ratnagiri	Maharashtra	Danda	0.4-0.5	Nil

**HEAVY RAINFALL WARNING FOR GUJARAT STATE TILL 0830 HOURS IST OF 18<sup>TH</sup> MAY**



**HEAVY RAINFALL WARNING FOR GUJARAT STATE FROM 0830 HOURS IST OF 18<sup>TH</sup> TO 0830 HOURS IST OF 19<sup>TH</sup> MAY**





WIND WARNING FOR GUJARAT STATE FROM 17<sup>TH</sup> NIGHT TO 18<sup>TH</sup> MAY NOON.

