



India Meteorological Department/ भारत मौसम विज्ञान विभाग

ACWC MUMBAI / ए.सी.डब्ल्यू.सी मुंबई

Sea Area Bulletin

Bulletin Valid for 12 hrs from 21 UTC of 2026-07-02 to 09 UTC of 2026-07-03

TTT Warning	NIL
-------------	-----

Synoptic Situation	<p>The Northern Limit of Monsoon passes through 22°N/60°E, 22°N/65°E, Porbandar, Vallabh Vidyanagar, Neemuch, Tonk, Bhiwani, Bhatinda and 32.5°N/70°E as on 02nd July. The Low Pressure Area over northwest Bay of Bengal and adjoining north Odisha-West Bengal coasts persists over the same region. The associated cyclonic circulation extends upto 7.6 km above mean sea level tilting southwestwards with height. It's likely to become more marked during next 2-3 days. The off-shore trough at mean sea level runs from south Gujarat to Karnataka persists. The shear zone roughly along latitude 21°N between 3.1 & 7.6 km above mean sea level persists. South west monsoon vigorous to strong over West Central Arabian sea , strong over East Central Arabian sea , moderate to strong over Southwest Arabian sea and north Arabian sea to south of latitude 22 deg N , moderate over South East Arabian sea , weather seasonal rest Arabian sea.</p>
--------------------	---

North West Arabian Sea

Wind	Mainly Southwesterly 20 to 25 knots gusting to 30 knots.
Weather	Isolated Rain/Thundershowers.
Visibility	Good except in Rain/Thundershowers.
Sea Condition	Rough to Very Rough

North East Arabian Sea

Wind	Southwesterly to Westerly 20 to 25 knots gusting to 30 knots.
Weather	Scattered Rain/Thundershowers with isolated squall.
Visibility	Good becoming poor in Rain or Thundershowers and very poor in squall
Sea Condition	Rough to Very Rough

West Central Arabian Sea

Wind	Mainly Southwesterly 25 to 30 knots gusting to 35 knots.
------	--

Weather	Isolated Rain/Thundershowers.
Visibility	Good except in Rain/Thundershowers.
Sea Condition	Rough to Very Rough

East Central Arabian Sea

Wind	Southwesterly to Westerly 20 to 25 knots gusting to 30 knots.
Weather	Fairly Widespread Rain/Thundershowers with isolated squall.
Visibility	Moderate becoming poor in Rain or Thundershowers and very poor in squall.
Sea Condition	Rough to Very Rough

South West Arabian Sea

Wind	East of 55 deg East Long: Mainly Southwesterly 20 to 25 knots gusting to 30 knots; West of 55 deg East Long: Mainly Southwesterly 25 to 30 knots gusting to 35 knots.
Weather	Scattered Rain/Thundershowers.
Visibility	Good becoming poor in Rain or Thundershowers.
Sea Condition	Rough to Very Rough

South East Arabian Sea

Wind	Southwesterly to Westerly 15 to 20 knots gusting to 25 knots.
Weather	Fairly Widespread Rain/Thundershowers with scattered squall
Visibility	Moderate becoming poor in Rain or Thundershowers and very poor in squall.
Sea Condition	Moderate to Rough

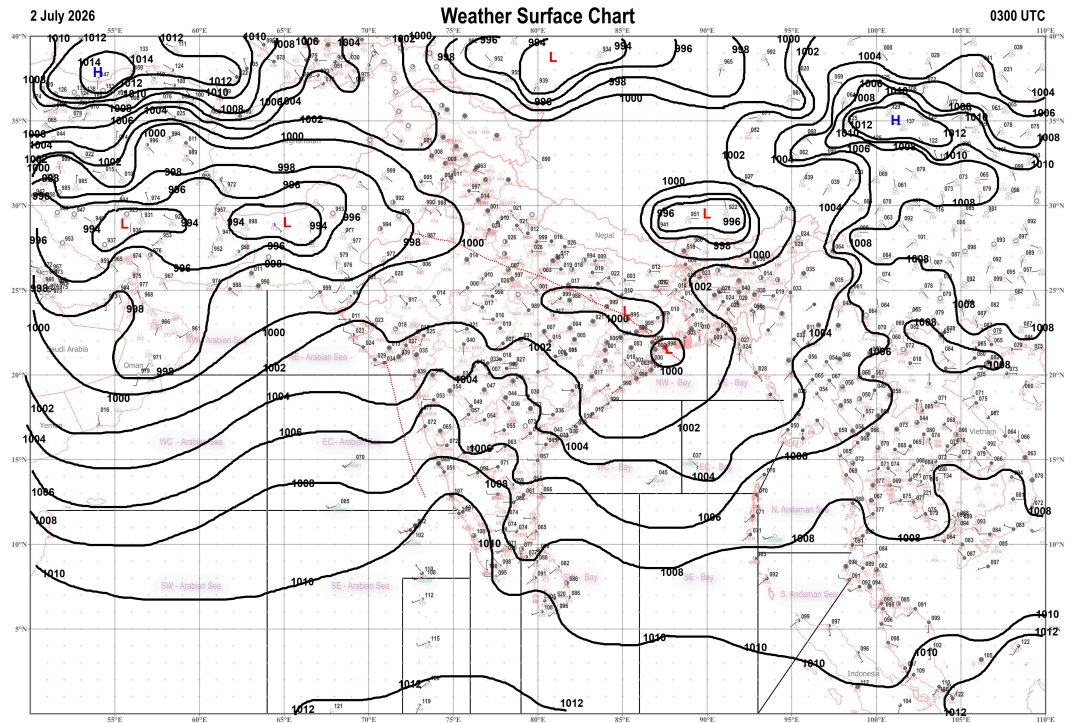
Lakshadweep Area

Wind	Mainly Westerly 15 to 20 knots gusting to 25 knots.
Weather	Fairly Widespread Rain/Thundershowers with isolated squall.
Visibility	Moderate becoming poor in Rain or Thundershowers and very poor in squall
Sea Condition	Moderate to Rough

Maldives Area

Wind	Mainly Westerly 15 to 20 knots gusting to 25 knots.
Weather	Scattered Rain/Thundershowers.
Visibility	Good becoming poor in Rain or Thundershowers.
Sea Condition	Moderate to Rough

Part 4



Part 5

NIL

Part 6

AAXX 00212 99942 339 42302 10402 20221 49953 539 39902 10378 20233 49972
634 62306 10360 20231 49994 731 82709 10318 20271 40015 754 52506 10282
20231 49996 838 72005 10284 20247 40015 840 82304 10276 20265 40019 909
80000 10260 20254 40021 933 80000 10305 20230 49996 99943 057 60000 10264
20255 40035 109 83605 10264 20255 40063 110 82704 10270 20256 40058 117
72306 10306 20183 40019 192 82302 10252 20249 40063 226 80902 10260 20251
40035 284 82506 10272 20237 40078 311 82706 10270 20256 40080 314 82302
10260 20246 40091 353 73203 10269 20244 40091 369 63205 10288 20257 40093
371 42702 10294 20251 40088 PPAA 52121 43003 44385 - - - PPAA 52121 43110
44385 26513 26012 25003 PPAA 52121 43369 44385 26021 31508 23007 PPAA
52121 43371 44385 29512 29511 22506

Time of Issue

21:08 IST of 2026-07-02