



**India Meteorological Department/ भारत मौसम विज्ञान विभाग**

**ACWC KOLKATA / ए.सी.डब्लू.सी कोलकाता**

**Sea Area Bulletin**

**Bulletin Valid for 12 hrs from 21 UTC of 2026-06-04 to 09 UTC of 2026-06-05**

TTT Warning	No Storm Warning.
-------------	-------------------

Synoptic Situation	<p>The Southwest Monsoon has further advanced into remaining parts of southeast Bay of Bengal and some more parts of southwest, westcentral, eastcentral and northeast Bay of Bengal today the 4th June, 2026. The Northern Limit of Monsoon passes through 14°N/60°E, 13.5°N/65°E, 13°N/70°E, Mangalore, Uthagamandalam, Kodaikanal, Thoothukudi, 8.8°N/79°E, 11°N/83°E, 14.5°N/87°E, 17.5°N/90°E, 20°N/93°E and 22°N/95°E as on 4th June 2026. Conditions are favourable for further advance of southwest monsoon into remaining parts of Southwest Bay of Bengal, some more parts of Westcentral, Eastcentral and Northeast Bay of Bengal, some parts of Northeastern state during next 2-3 days. The upper air cyclonic circulation over north Andaman Sea &amp; neighbourhood between 3.1 &amp; 7.6 km above mean sea level persists. Southwest Monsoon: Moderate to Strong over some parts over Southwest Bay of Bengal. Moderate over some parts over Westcentral Bay of Bengal. Moderate over all parts over Sout</p>
--------------------	---

**South West Bay**

Wind	Mainly Southwesterly, 20 - 25 kts
Weather	Isolated rain or thundershowers
Visibility	Good becoming Moderate in rain/thundershower
Sea Condition	Moderate to Rough

**South East Bay**

Wind	Southwest to Westerly, 15 - 20 kts
Weather	Scattered rain or thundershowers
Visibility	Good becoming Moderate in rain
Sea Condition	Slight to Moderate

**West Central Bay**

Wind	Mainly Southwesterly, 15 - 20 kts
Weather	Isolated rain or thundershowers
Visibility	Good becoming Moderate in rain/thundershower
Sea Condition	Slight to Moderate

### East Central Bay

Wind	Southwest to Westerly, 10 - 15 kts
Weather	Scattered rain or thundershowers
Visibility	Good becoming Moderate in rain/thundershower
Sea Condition	Smooth to Slight

### North West Bay

Wind	South to Southwesterly, 10 - 15 kts
Weather	Isolated rain or thundershowers
Visibility	Good becoming Moderate in rain/thundershower
Sea Condition	Smooth to Slight

### North East Bay

Wind	Mainly Southwesterly, 10 - 15 kts
Weather	Isolated rain or thundershowers
Visibility	Good becoming Moderate in rain/thundershower
Sea Condition	Smooth to Slight

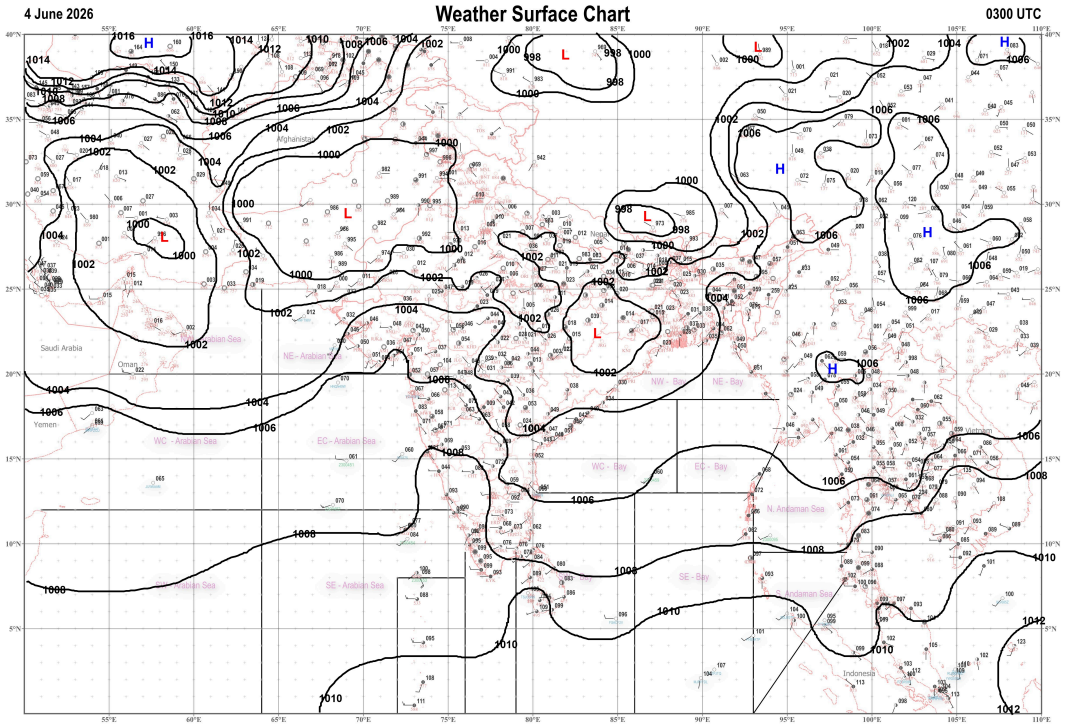
### South Andaman Sea

Wind	Mainly Westerly, 15 - 20 kts gusting 30 kts
Weather	Widespread rain or thundershowers with isolated heavy rain
Visibility	Moderate becoming Poor in heavy rain/thundershower
Sea Condition	Slight to Moderate occasionally Very Rough

### North Andaman Sea

Wind	Mainly Westerly, 15 - 20 kts gusting 30 kts
Weather	Widespread rain or thundershowers with isolated heavy rain
Visibility	Moderate becoming Poor in heavy rain/thundershower
Sea Condition	Slight to Moderate occasionally Very Rough

Part 4



Part 5

NIL

Part 6

AAXX,00412,,, 99942,,,, 807,31596,31801,10348,49989 811,32596,30000,10328,49993  
901,32596,62002,10338,49989 806,32596,21603,10326,49995  
903,32996,21805,10328,49997 895,32596,62302,10328,49992  
976,31595,41802,10318,40004= 99943,,,, 049,21495,81802,10308,40008  
053,32596,72002,10308,40002 105,32597,62901,10318,40001  
150,31596,52005,10326,40008 185,21597,60000,10312,40004  
245,32597,41604,10380,40014 346,32597,42312,10340,40032  
279,32597,31410,10362,40024=

Time of Issue

21:08 IST of 2026-06-04