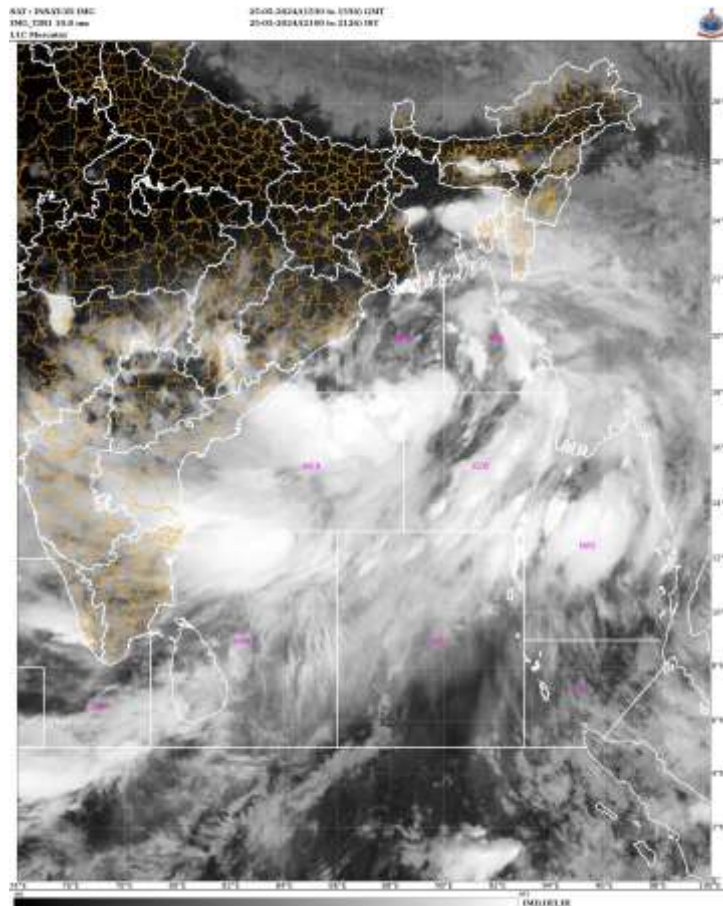


## **SATELLITE FIX BULLETIN**

**25.05.2024 TIME 1500 UTC**



**A. VORTEX (REMAI)**

**B. 25/1500Z**

**C. 18.9N**

**D. 89.4E**

**E. T2.5**

**F. INSAT-3D / 3DR**

**F. IR**

**G. REMARKS: THE SYSTEM HAS MOVED NORTHWARDS IN PAST 6 HRS. ASSOCIATED CLOUD BANDS ARE OBSERVED OVER NE AND CENTRAL BAY. INTENSE CONVECTIVE CELLS ARE SEEN DEVELOPING IN THE NORTH-EAST SECTOR.**

**H. ADDITIONAL POSITIONS: NIL**

**TOO 25/2145 EF**

**NNNN**