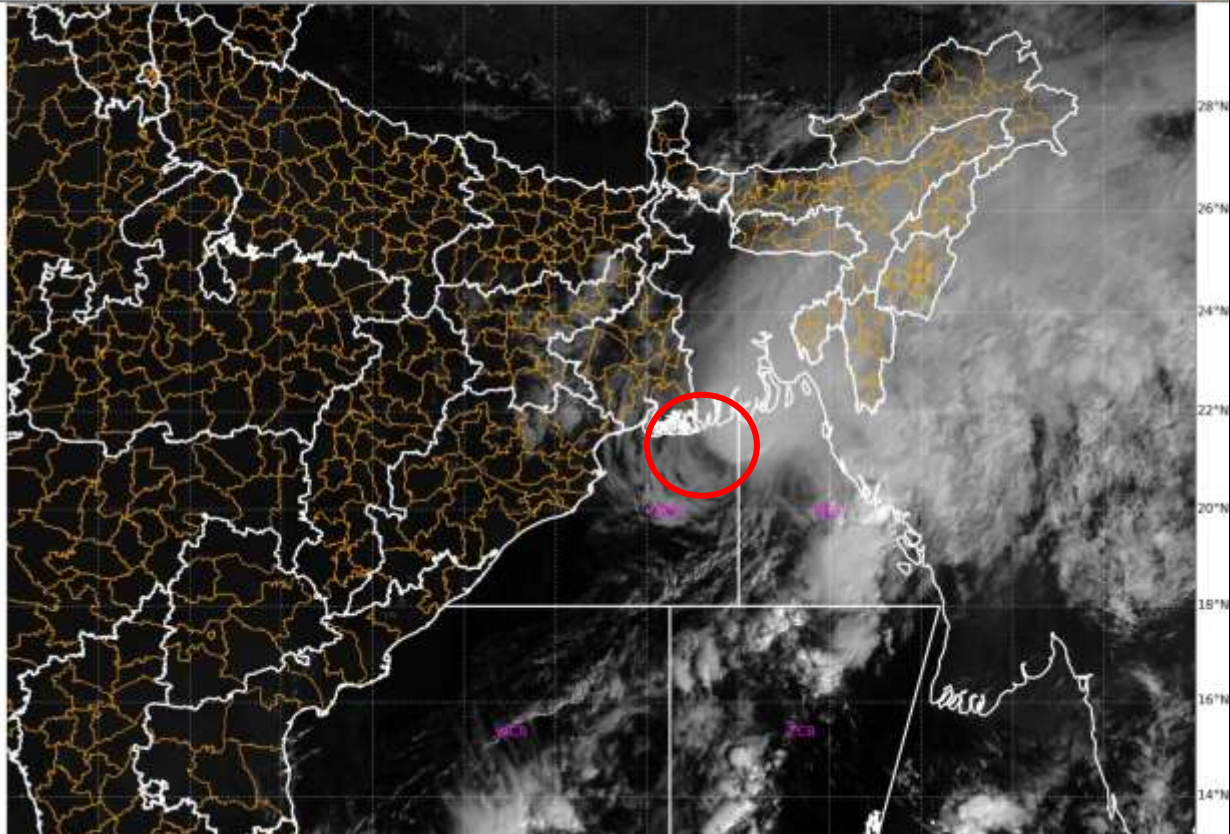


SATELLITE FIX BULLETIN

17.11.2023 TIME 0300 UTC

SAT : INSAT-3D IMG
Visible Count 0.65 um
LIC Mercator

17-11-2023/(0300 to 0327) GMT
17-11-2023/(0830 to 0857) IST



TCIN50 DEMS 170300

A. VORTEX (**MIDHILI**)

B. 17/0300Z

C. **20.9N**

D. **89.1E**

E. **T2.5/2.5**

F. INSAT-3D / 3DR / F 17 SSMIS

F. VIS / IR / MICROWAVE

G. REMARKS:

(1) WATER VAPOUR IMAGERY AT 0300 UTC INDICATES A DEEP WESTERLY TROUGH AROUND LONG 85.0E TO THE NORTH LAT 16.0N (WEST OF SYSTEM) DUE TO WHICH SOUTH-WESTERLY WINDS SUPPORTS THE N-NE MOVEMENT OF THE SYSTEM DURING PAST 06 HRS.

(2) IR IMAGERY SHOWS INTENSE CONVECTIVE CLOUD MASS SHEARED TO THE NE SECTOR OF THE SYSTEM CENTER AND LIES OVER COASTAL BANGLADESH. VERY INTENSE CONVECTION SEEN OVER NORTH BAY S BANGLADESH NORTH MYANMAR HAVING CTT MINUS 90 DEGREE CELSIUS. MODERATE TO INTENSE CONVECTION LIES OVER NE STATES. IR IMAGERY ALSO SHOWS POLEWARD OUTFLOW OF SYSTEM OVER NORTHERN PART OF THE SYSTEM COVERING BANGLADESH AND NORTH-EAST STATES.

(3) SHEAR PATTERN, DISTANCE OF ABOUT 60 KM BETWEEN LLCC AND NEAREST CONVECTIVE EDGE (< 0.75 DEGREE RULE 2b) YIELDS DT 2.5. PT 2.5 MET 3.0 (2.0 + 1.0). FT BASED ON DT. PT SUPPORTS FT.

H. ADDITIONAL POSITION:

F 17 SSMIS MICROWAVE 00:04 UTC 20.3N / 88.7E

TOO 17/1015 EF=

NNNN