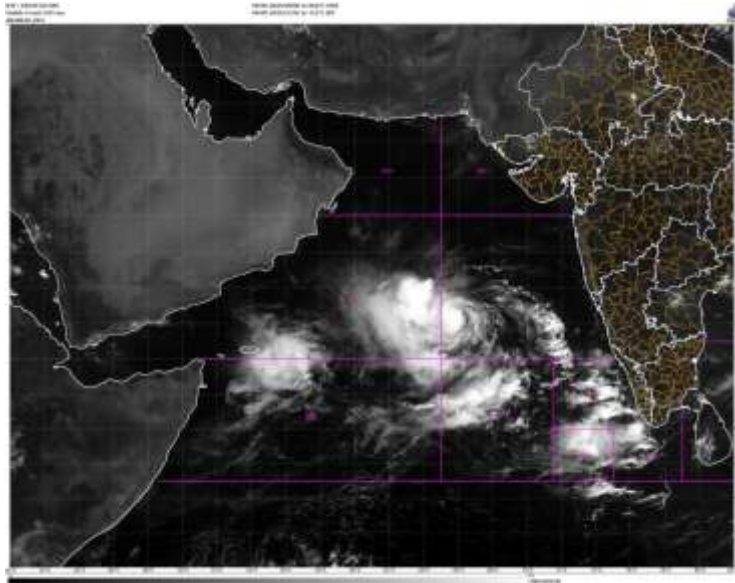


SATELLITE FIX BULLETIN

08.06.2023 TIME 0600 UTC



ZCZCZ 060

TCIN50 DEMS 080600

A. TROPICAL DISTURBANCE (BIPARJOY)

B. 08/0600Z

C. 14.1N

D. 66.0E

E. T4.0/4.0

F. INSAT-3D / 3DR /

F. IR / VIS/PMW

G. REMARKS:

THE SYSTEM HAS MOVED SLIGHTLY NORTH-WARDS IN LAST 06 HRS. IR IMAGERY SHOWS THE SYSTEM STRONG CONVECTIVE CLOUD MASS IS LOCATED IN THE NW SECTOR OF THE SYSTEM.

MICROWAVE PASS OF 0130Z SHOWS WELL DEFINED CENTRE SURROUNDED BY CURVE BANDING.

TOO 08/1230 EF=

NNNN