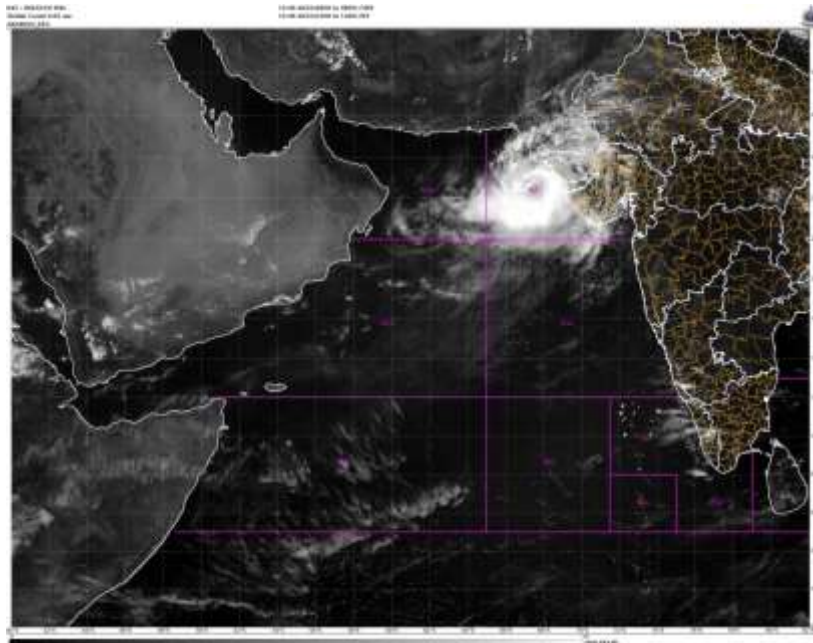


SATELLITE FIX BULLETIN

15.06.2023 TIME 0900 UTC



TCIN50 DEMS 150900

A. TROPICAL DISTURBANCE (BIPARJOY)

B. 15/0900Z

C. 22.7N

D. 67.7E

E. T4.0/4.0

F. INSAT-3D / 3DR

F. VIS / IR

G. REMARKS:

THE SYSTEM HAS MOVED EAST-NORTH EAST WARDS IN LAST 6 HRS MAINTAINING ITS INTENSITY.

INTENSE CONVECTIVE CLOUD BAND IS SEEN ENCIRCLING THE SYSTEM CENTRE.

INTENSE CONVECTION IS OBSERVED OVER NORTH EAST ARABIAN SEA.

MODERATE CONVECTION WITH EMBEDDED INTENSE CONVECTIVE CELLS ARE SEEN SPREAD OVER SINDH AND ENTIRE GUJARAT STATE AND ISOLATED PARTS OF SOUTH RAJASTHAN.

H. ADDITIONAL POSITION: NIL

TOO 15/1525 EF=

NNNN