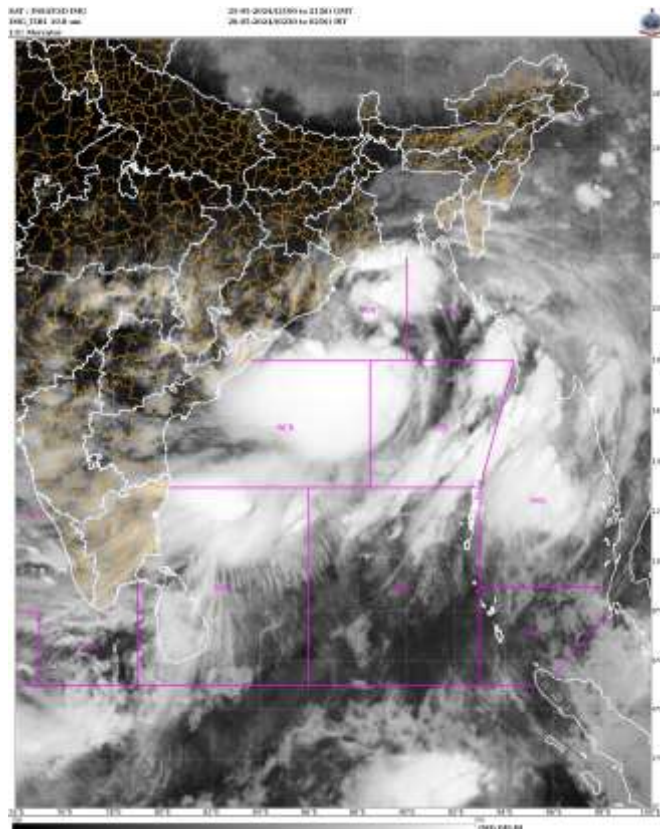


SATELLITE FIX BULLETIN

25.05.2024 TIME 2100 UTC



A. VORTEX (REMAI)

B. 25/2100Z

C. 19.1N

D. 89.4E

E. T2.5

F. INSAT-3D / 3DR / OCEANSAT

F. IR / SCATTEROMETER

G. REMARKS: THE SYSTEM HAS MOVED NORTHWARDS IN PAST 6 HRS. ASSOCIATED LARGE INTENSE CONVECTIVE CLOUD MASS LIES IN SOUTH WEST SECTOR OF THE CENTRE. INTENSE CONVECTIVE CLOUDS TO THE NORTH OF SYSTEM CENTRE ARE SEEN INTERACTING WITH COASTAL GANGETIC WEST BENGAL & COASTAL BANGLADESH. OCEANSAT PASS AT 18.26 UTC SHOWS MAXIMUM SUSTAINED WINDS OF 40-45 KTS IN SW SECTOR OF THE SYSTEM CENTRE AND OF THE ORDER OF 20-30 KTS OVER OTHER SECTORS SURROUNDING THE CENTRE.

H. ADDITIONAL POSITONS: OCEANSAT 18.26 UTC – 18.9N / 89.3E.

TOO 26/0445 EF

NNNN