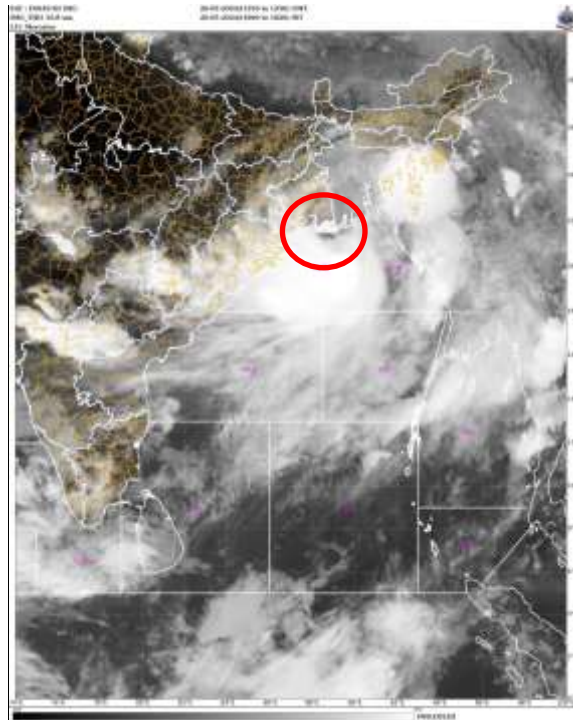


SATELLITE FIX BULLETIN

26.05.2024 TIME 1200 UTC



A. VORTEX (REMAL)

B. 26/1200Z

C. 21.1N

D. 89.2E

E. T3.5/3.5

F. INSAT-3D / 3DR

F. VIS / IR

G. REMARKS: THE SYSTEM MOVED NORTHWARDS DURING LAST 6 HRS.

INTENSE TO VERY INTENSE CONVECTIVE CLOUDS LIE OVER THE SOUTHERN SECTOR OF THE SYSTEM ENCOMPASSING COASTAL ODISHA SOUTH GWB.

INTENSE TO VERY INTENSE CONVECTIVE CLOUDS ALSO OBSERVED OVER SOUTHERN PARTS OF NE STATES.

H. ADDITIONAL POSITONS: GPM GMI AT 0944 UTC DEPICTS SYSTEM CENTRE NEAR 20.7N / 89.2E.

TOO 26/1850 EF

NNNN