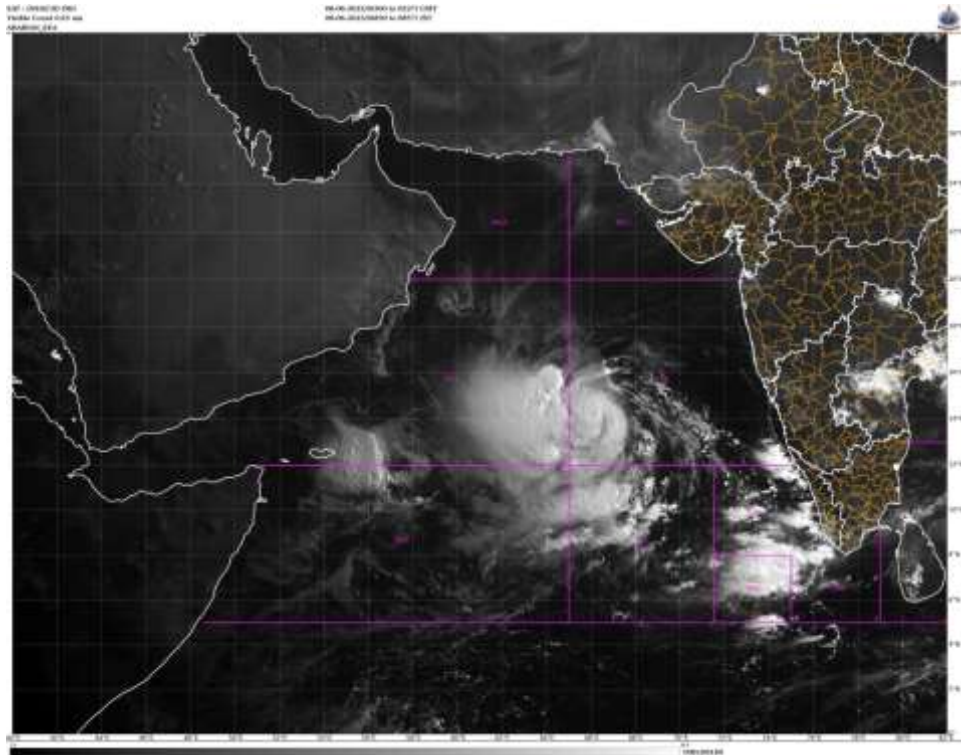


SATELLITE FIX BULLETIN

08.06.2023 TIME 0300 UTC



ZCZCZ 030

TCIN50 DEMS 080300

A. TROPICAL DISTURBANCE (**BIPARJOY**)

B. 08/0300Z

C. **14.0N**

D. **66.0E**

E. **T4.0/4.0**

F. INSAT-3D / 3DR / F16/17

F. IR / VIS/MICRO

G. REMARKS:

THE SYSTEM HAS MOVED SLIGHTLY NORTH-WARDS IN LAST 06 HRS.
IR IMAGERY SHOWS THE SYSTEM STRONG CONVECTIVE CLOUD MASS IS
LOCATED IN THE NW SECTOR OF THE SYSTEM.

TOO 08/0930 EF=

NNNN